



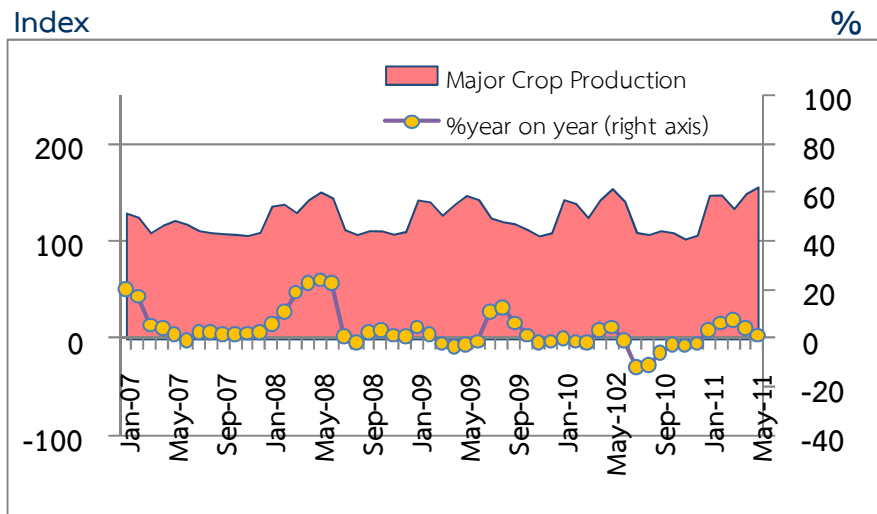
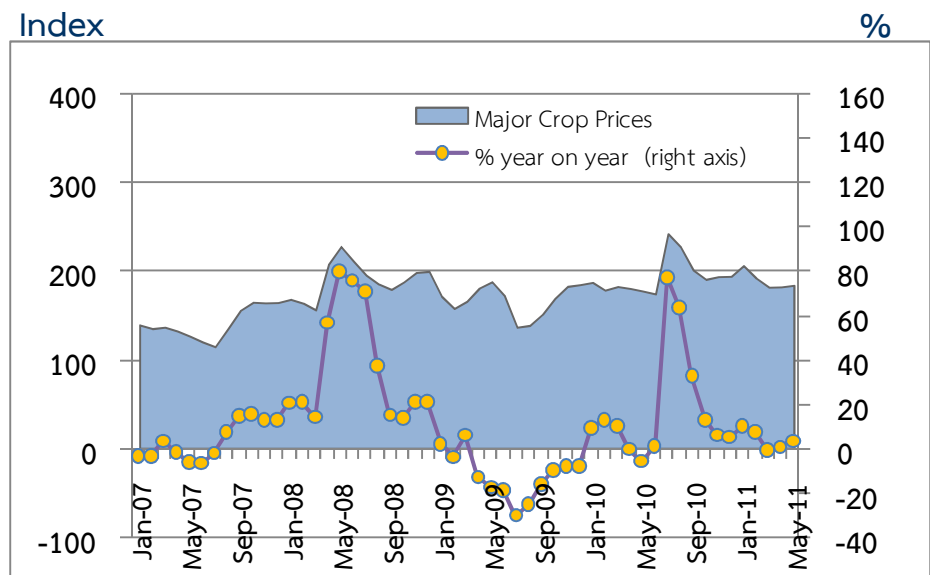
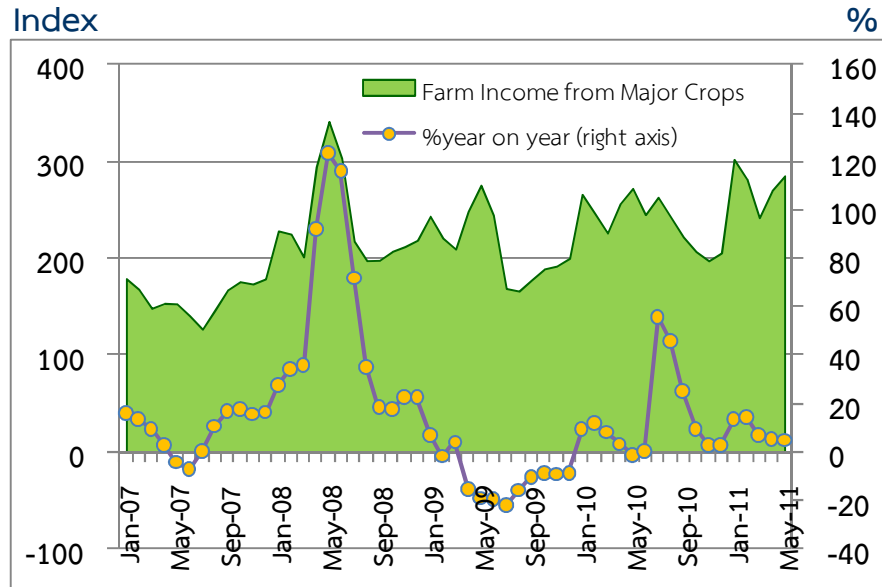
แถลงข่าวเศรษฐกิจการเงินภาคเหนือ

เดือนพฤษภาคม 2554



# Farm Income from Major Crops

Regional Economic Division, Northern Region Office



CHANGE IN FARM INCOME FROM MAJOR CROPS,  
MAJOR CROP PRODUCTION AND MAJOR CROP PRICES

% (Y-O-Y)	2010	2010			2011		
		H1	Q3	Q4	Q1	Apr	May
Farm Income	9.5	6.6	35.9	4.0	10.8	5.3	4.8
Production	-2.5	0.2	-8.5	-2.7	6.1	4.4	1.2
Price	12.3	6.4	48.5	6.8	4.4	0.9	3.6

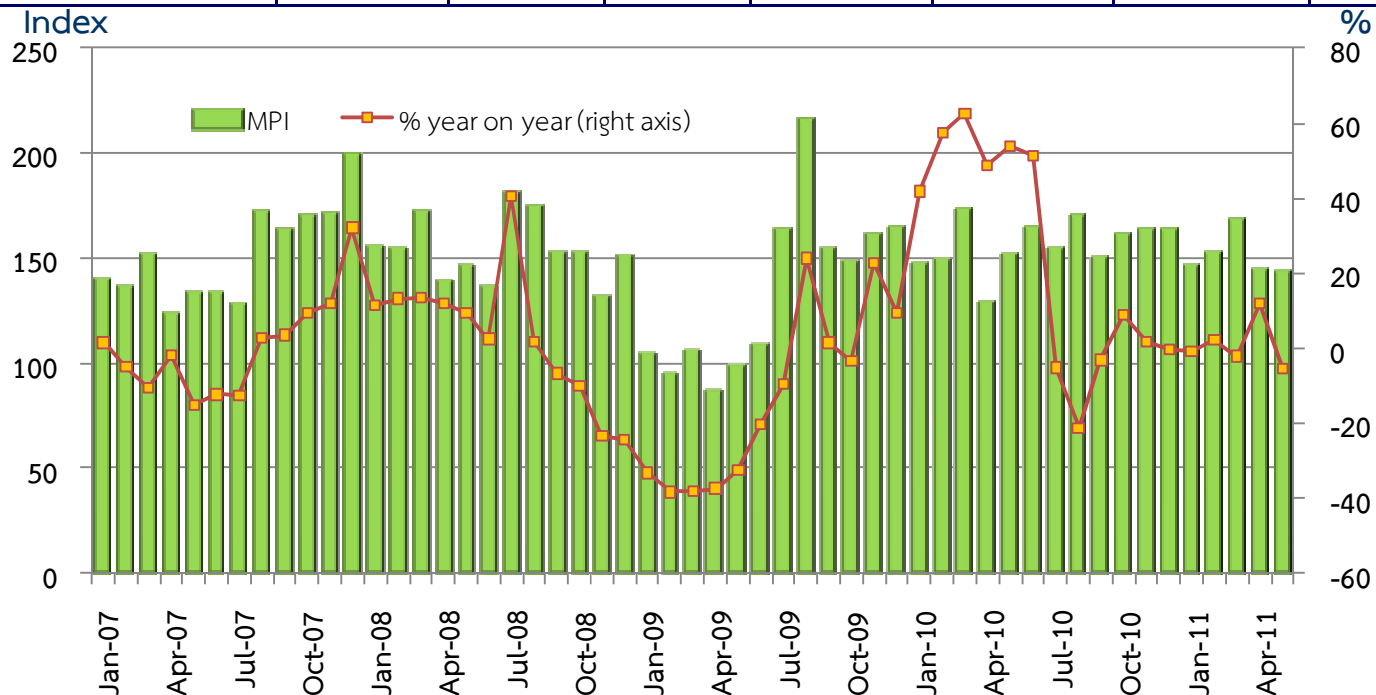
Source : Index constructed using data from Ministry of Agriculture and Co-operatives. (2002 =100)



# Manufacturing Production Index

Regional Economic Division, Northern Region Office

	2010	2010			2011		
		H1	H2	Q4	Q1	Apr	May <sup>P</sup>
MPI level	156.6	152.5	160.6	163.0	155.8	144.6	143.5
%YoY	16.9%	52.7%	-4.4%	3.2%	-0.4%	12.0%	-5.3%
MPI level, SA	-	-	-	144.0	170.3	179.7	160.3
% MoM,%QoQ S.A.	-	-	-	0.07%	18.2%	8.0%	-10.8%



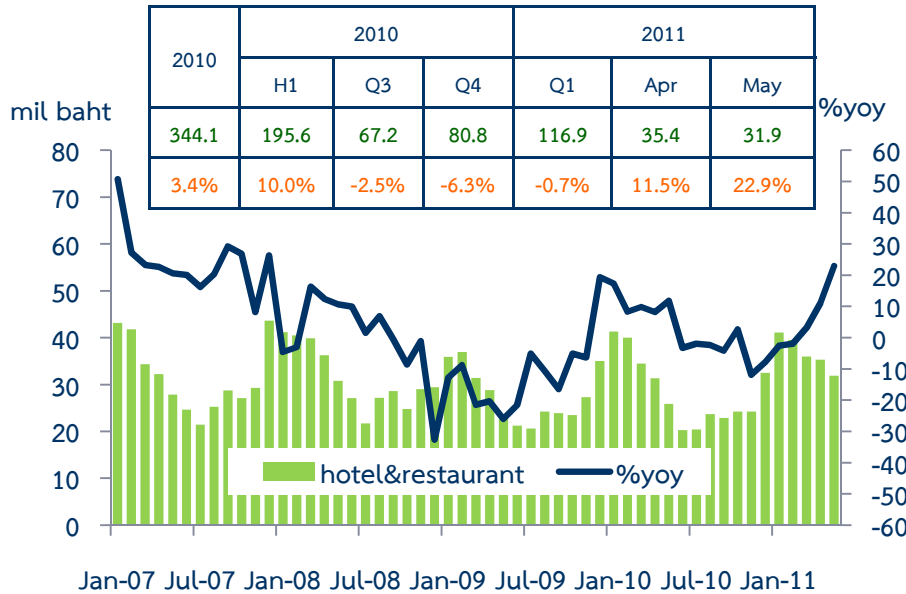
Source: Bank of Thailand, Northern Region Office



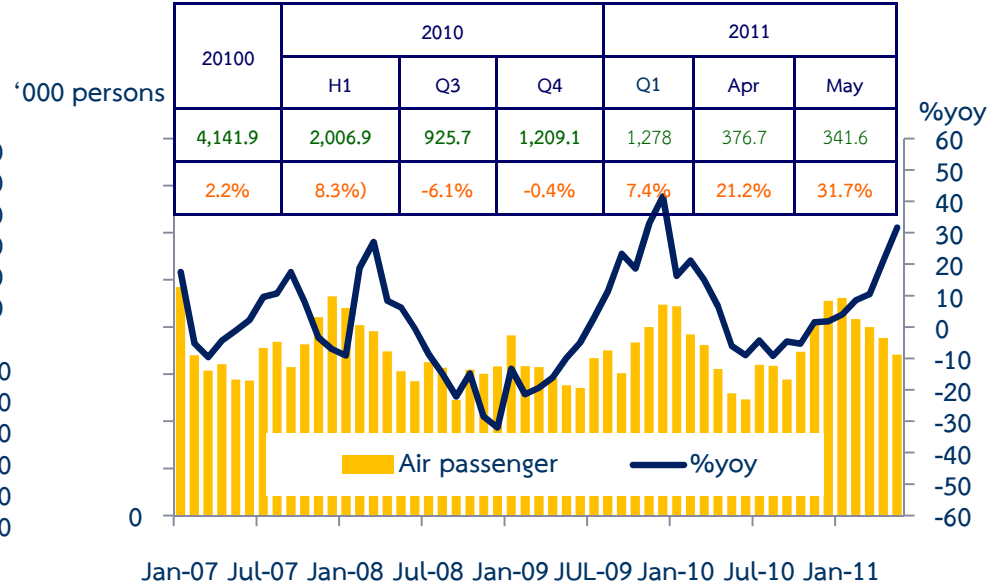
# Tourism

Regional Economic Division, Northern Region Office

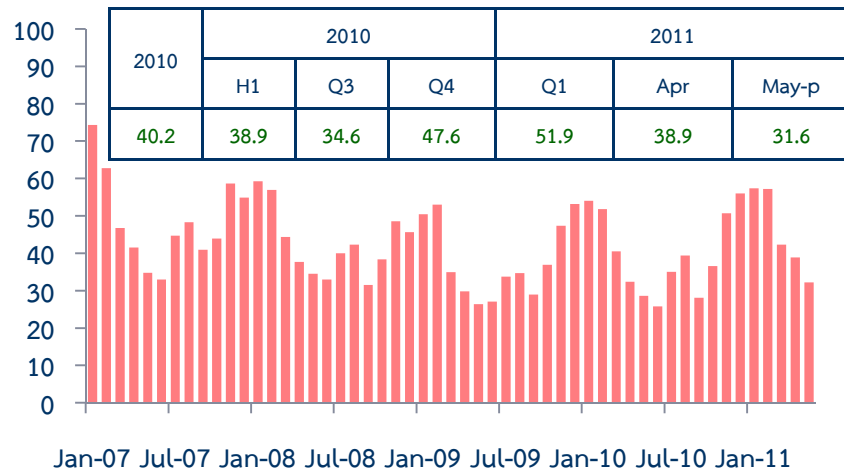
### Hotel and restaurant VAT



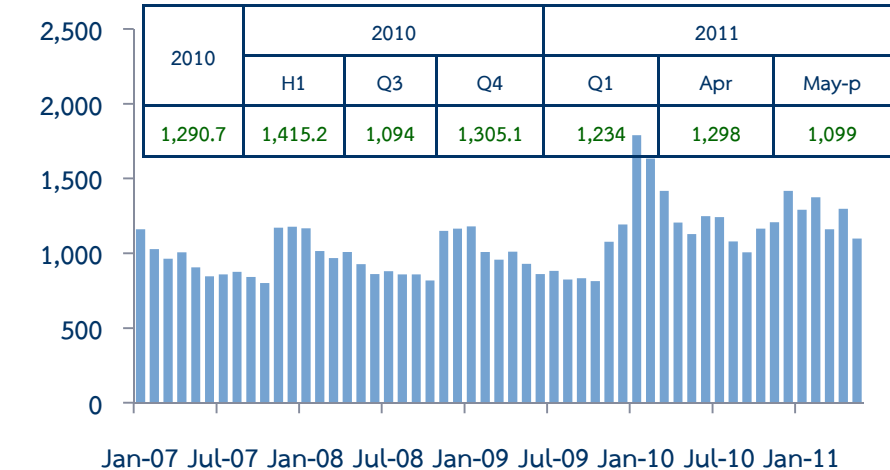
### Air passengers



### Hotel occupancy rate



### Hotel average room rate



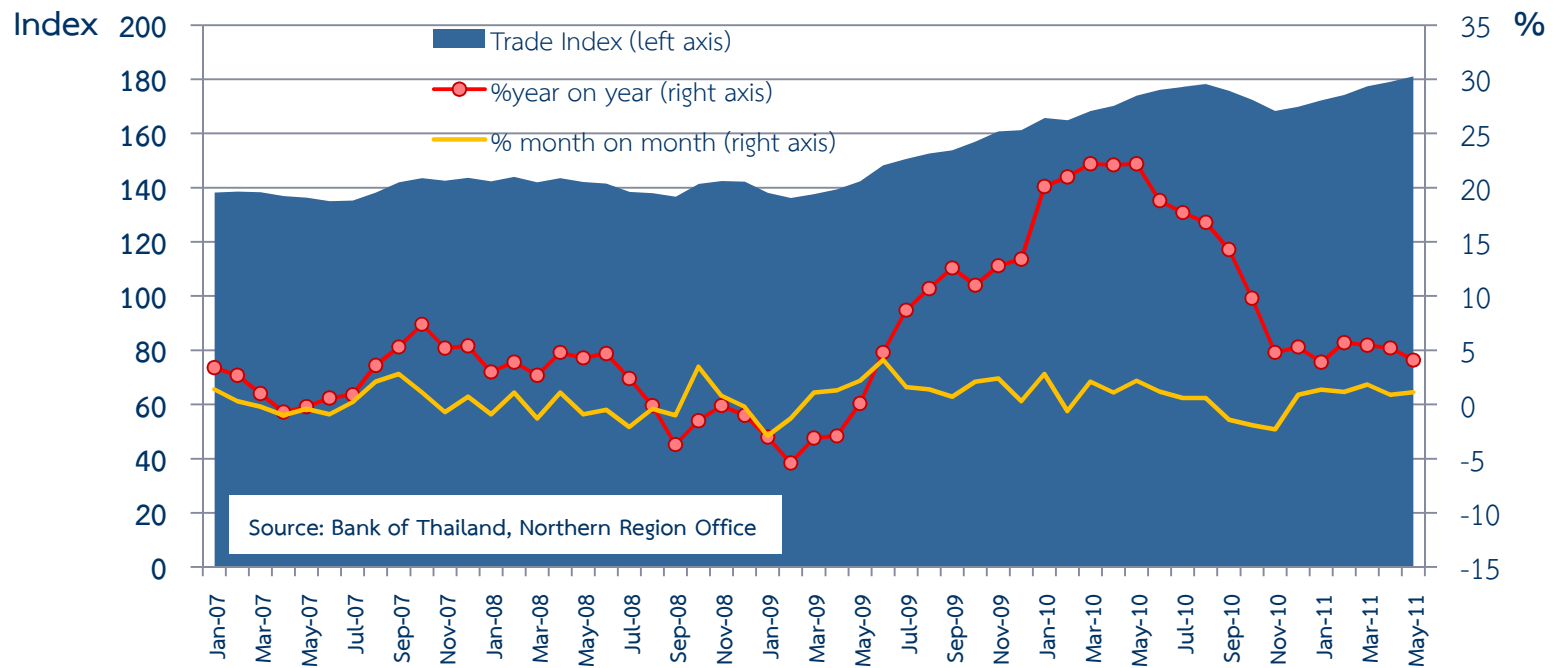
Sources: Ministry of Finance; Airports of Thailand Public Company Limited.; and Data Management Group, Bank of Thailand



# Trade Index

Regional Economic Division, Northern Region Office

	Weight	2010	2010			2011		
			H1-10	Q3-10	Q4-10	Q1	Apr-11	May-11 <sup>P</sup>
Trade Index	100%	171.8	169.9	177.1	170.3	174.7	179.1	181.1
% year on year (%yoy)		15.9	21.0	16.2	6.6	5.0	5.2	4.1
Motor Vehicles/Cycles Trade	46.0%	167.7	164.2	173.0	169.6	173.9	182.6	182.4
% yoy		16.9	21.1	17.9	8.6	7.6	10.6	9.3
Wholesale Trade	21.0%	197.7	195.6	203.9	195.8	197.8	197.9	207.7
% yoy		17.9	23.0	15.5	11.1	6.5	1.1	0.4
Retail Trade	33.0%	163.5	163.9	168.5	157.6	163.3	164.1	165.1
% yoy		13.4	19.8	14.4	1.2	0.6	0.4	-0.6





## Private Consumption Index (Seasonally Adjusted)

Regional Economic Division, Northern Region Office

	2010	2010			2011		
		H1	Q3	Q4	Q1	Apr	May <sup>P</sup>
PCI	131.5	131.9	132.0	130.1	132.7	131.9	131.9
% year on year	3.7	4.6	4.1	1.7	0.8	0.5	-0.2
%month on month, %quarter on quarter		3.5	-0.2	-1.4	2.0	-0.1	0.0

Index

%

Source: Bank of Thailand, Northern Region Office



# Private Investment Index (Seasonally Adjusted)

Regional Economic Division, Northern Region Office

	2010	H1-10	Q3-10	Q4-10	Q1-11	Apr-11	May-11
PII	108.3	106.9	107.9	111.5	116.3	116.1	112.5
%year on year	4.4	5.8	2.4	3.9	9.4	8.6	4.7
%month on month, %quarter on quarter	4.4	0.5	0.4	3.3	4.3	-0.7	-3.1

Index

%

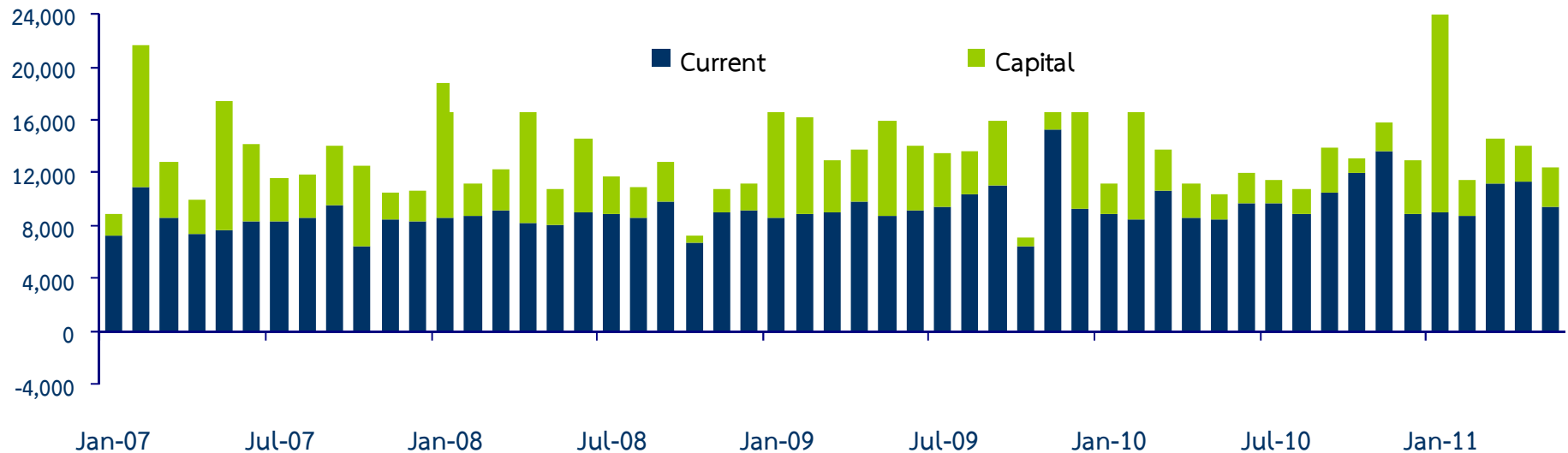


# Public Expenditure

Regional Economic Division, Northern Region Office

Expenditure	2010	2010			2011		
		H1	H2	Q4	Q1	Apr	May
Current	118,153.8	54,705.8	63,447.9	34,519.1	29,028.8	11,303.4	9,397.4
% year on year	(2.1)	(1.3)	(2.8)	(11.7)	(4.0)	(31.1)	(10.8)
Capital	37,599.8	22,838.0	14,761.9	7,454.9	21,169.3	2,791.9	3,005.6
% year on year	(-39.4)	(-39.8)	(-38.6)	(-37.4)	(31.1)	(10.5)	(61.9)
Total	155,753.6	77,543.8	78,209.8	41,974.0	50,198.2	14,095.3	12,403.0
% year on year	(-12.4)	(-15.7)	(-8.8)	(-1.9)	(13.9)	(26.4)	(20.0)

Million Baht



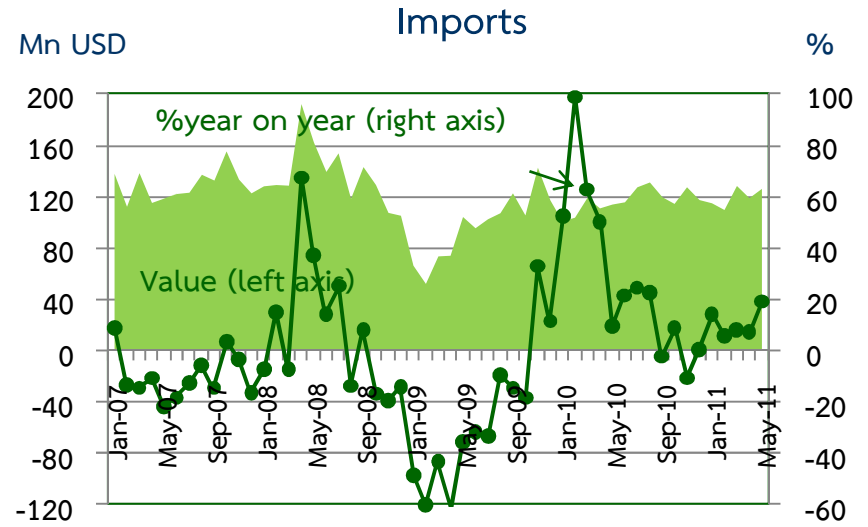
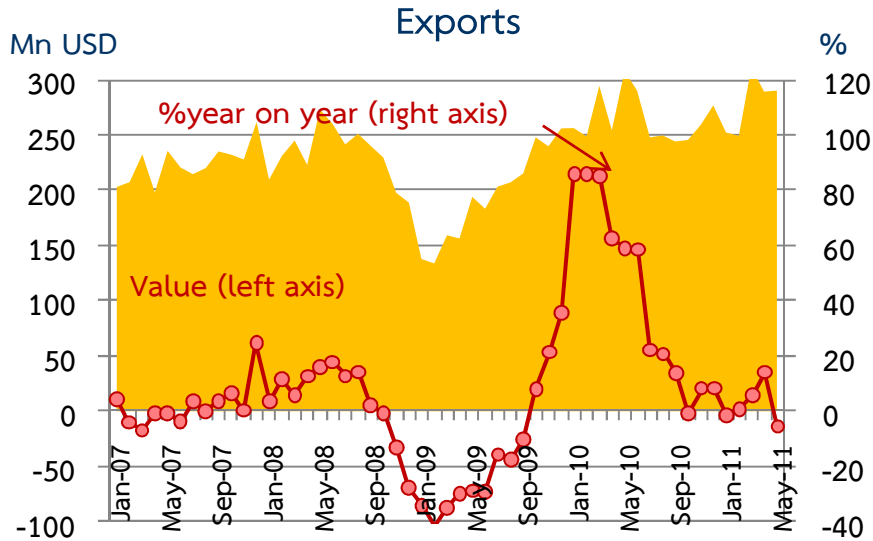


# Foreign Trade

Regional Economic Division, Northern Region Office

	2010	2010			2011		
		H1	H2	Q4	Q1	Apr	May
EXPORTS	3,184.5	1,656.7	1,527.9	783.9	815.0	290.2	291.0
	36.1%	71.2%	11.3%	5.1%	1.6%	13.9%	-5.7%
IMPORTS	1,384.5	651.6	733.0	356.9	350.5	118.2	125.3
	19.9%	41.2%	5.8%	-1.6%	9.1%	7.3%	19.1%
Trade Balance	1,800.0	997.1	794.9	427.0	464.5	172.0	165.7

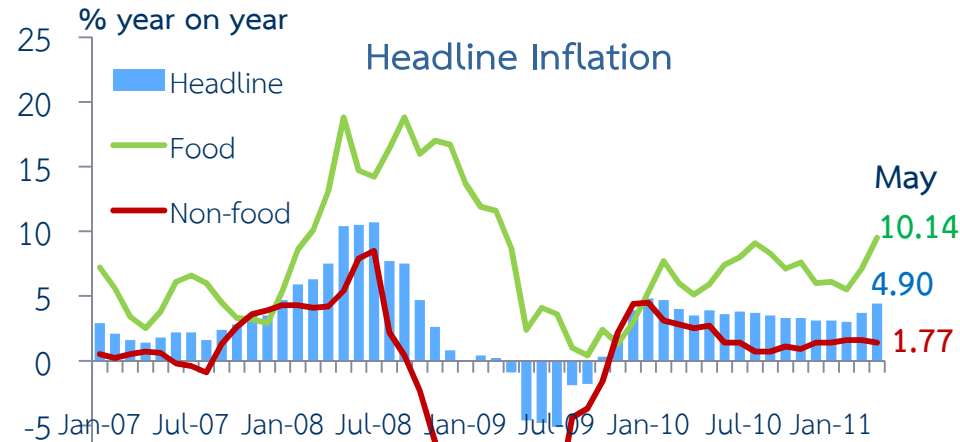
Sources: Customs Department



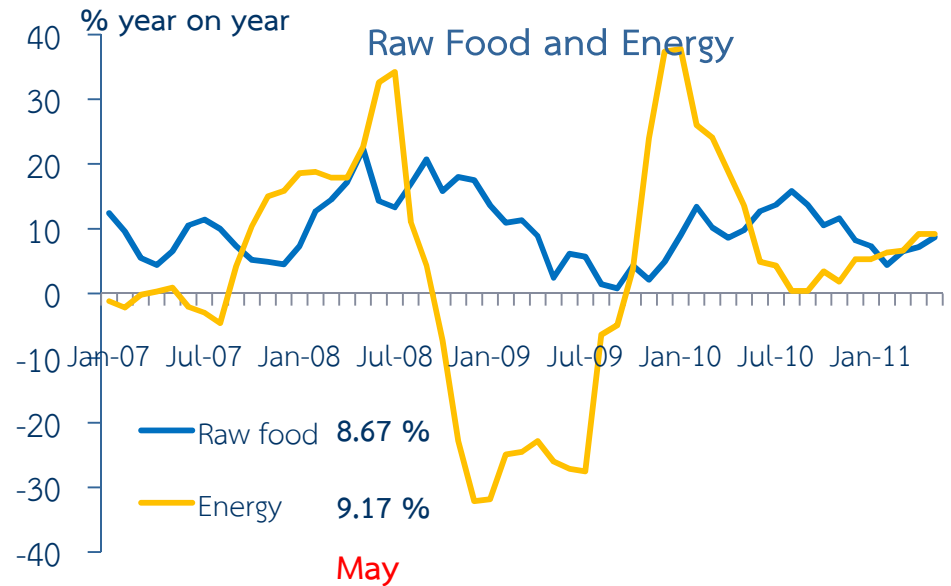
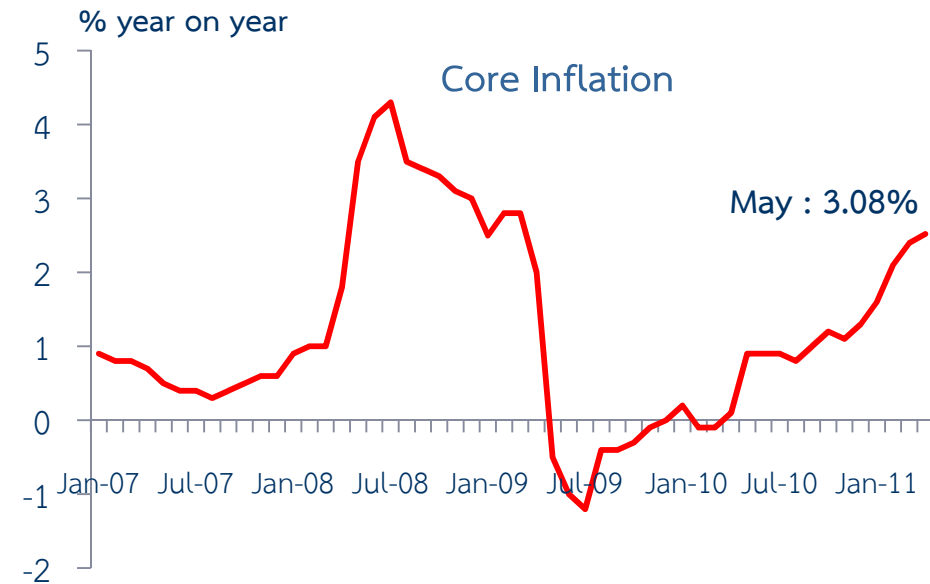


# Inflation

Regional Economic Division, Northern Region Office



	2009	2010	2010				2011		
			H1	H2	Q3	Q4	Q1	Apr	May
Headline	-1.1	3.7	4.1	3.4	3.6	3.2	3.28	4.41	4.90
Food	5.1	7.0	6.2	7.7	8.5	6.9	6.25	9.52	10.14
Non-food	-5.6	1.9	2.9	1.0	0.9	1.1	1.54	1.41	1.77





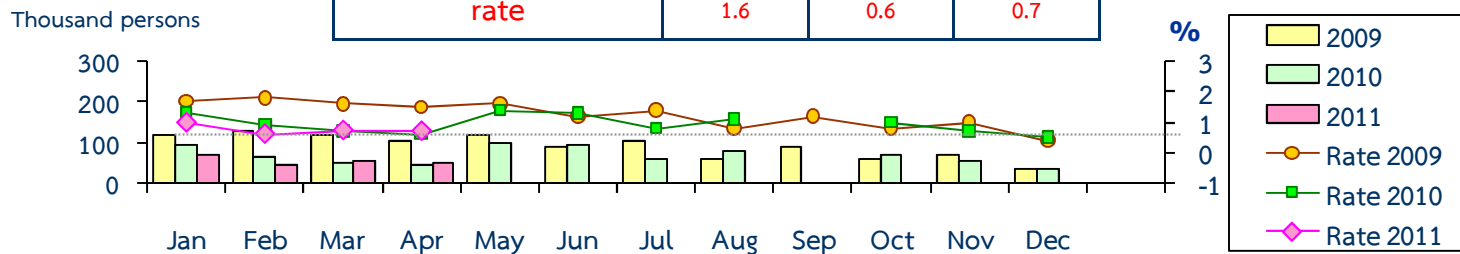
# Labor Force Survey

Regional Economic Division, Northern Region Office

	% of Total Labor Force (as of Apr 2011)	2010 ( $\Delta$ %)	H1-10 ( $\Delta$ %)	H2-10 ( $\Delta$ %)	Q3-10 ( $\Delta$ %)	Q4-10 ( $\Delta$ %)	Q1-11 ( $\Delta$ %)	Mar-11 ( $\Delta$ %)	Apr-11 ( $\Delta$ %)
Labor Force (1,000 Persons)	100.0	7,232	7,176	7,287	7,266	7,308	7,249	7,288	7,145
Employed persons	98.9	0.6	1.3	0.7	-0.2	1.5	1.1	1.3	-0.8
• Agriculture	46.1	-0.7	0.4	-1.8	-5.0	1.6	1.7	-7.0	9.8
• Non-agriculture	52.8	2.5	2.0	3.0	4.5	1.5	0.6	7.6	-8.5
- Wholesale & retail trade	14.0	2.5	4.7	0.3	-2.9	3.6	0.8	4.7	-7.7
- Manufacturing	8.7	0.8	0.8	0.8	6.1	-4.3	-11.7	-3.5	-24.3
- Construction	7.9	1.7	2.6	0.6	5.5	-3.8	2.2	15.6	-15.5
- Hotel & restaurants Services	5.1	5.9	6.5	5.2	4.2	6.2	-16.7	8.7	-16.1
- Others	17.1	-6.4	-1.8	-11.0	-26.2	3.6	15.8	15.6	9.6
Unemployed persons	0.7	-27.2	-35.8	-13.4	-20.5	-2.3	-18.1	9.7	13.5
Seasonally inactive persons	0.4	73.7	88.5	30.7	350.1	-50.0	-30.6	-34.8	-58.1

## Unemployment

	Apr-09	Apr-10	Apr-11
In thousand persons	118	43	49
rate	1.6	0.6	0.7



Source : National Statistical Office

