



ธนาคารแห่งประเทศไทย
BANK OF THAILAND

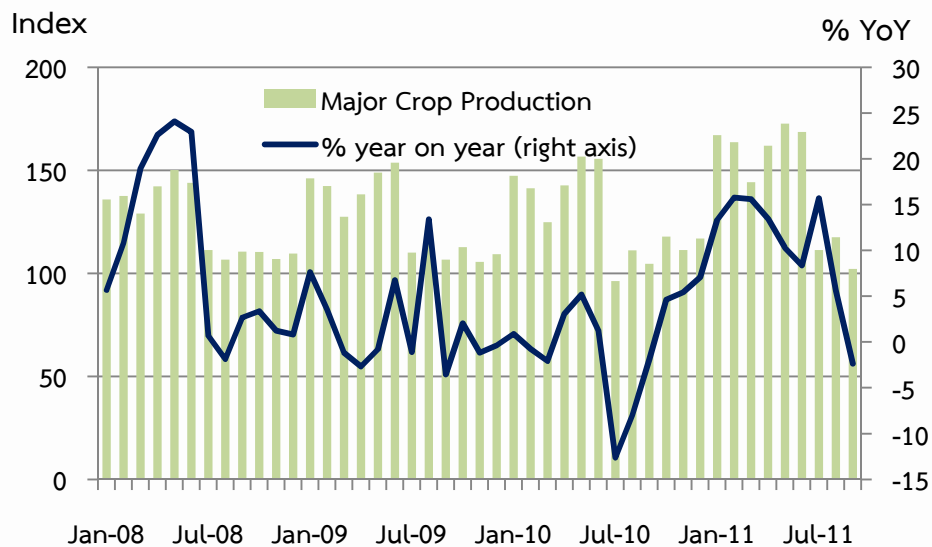
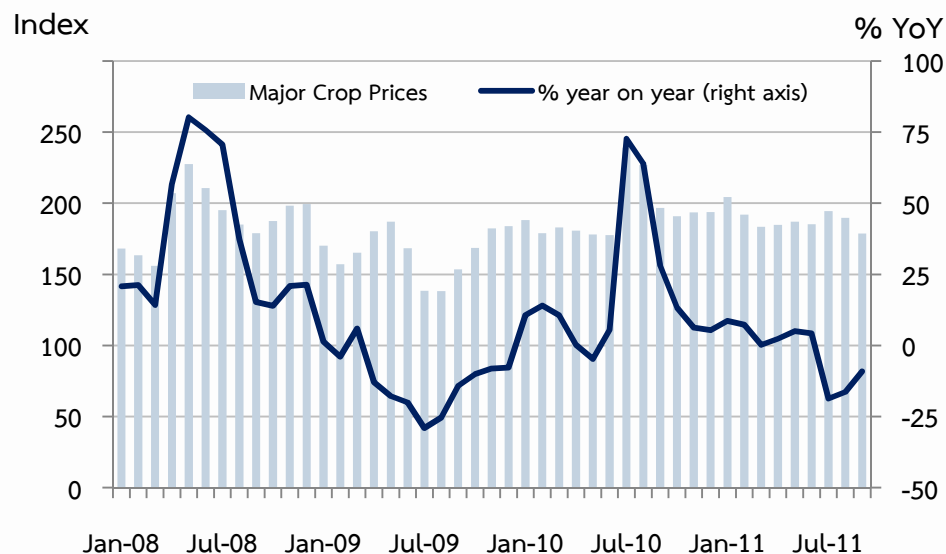
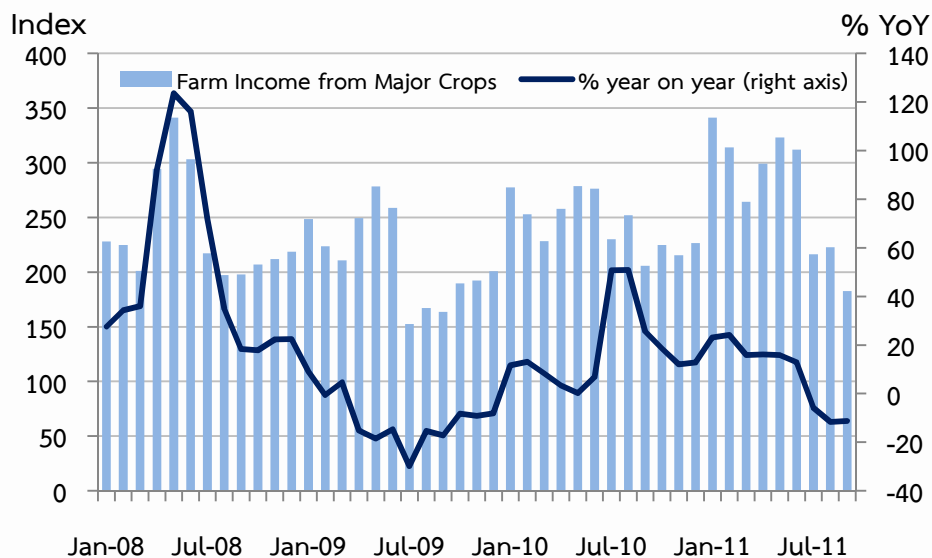


The Northern Region : Economic Conditions in Sep 2011



Farm Income from Major Crops

Economic Research Division, Northern Region Office

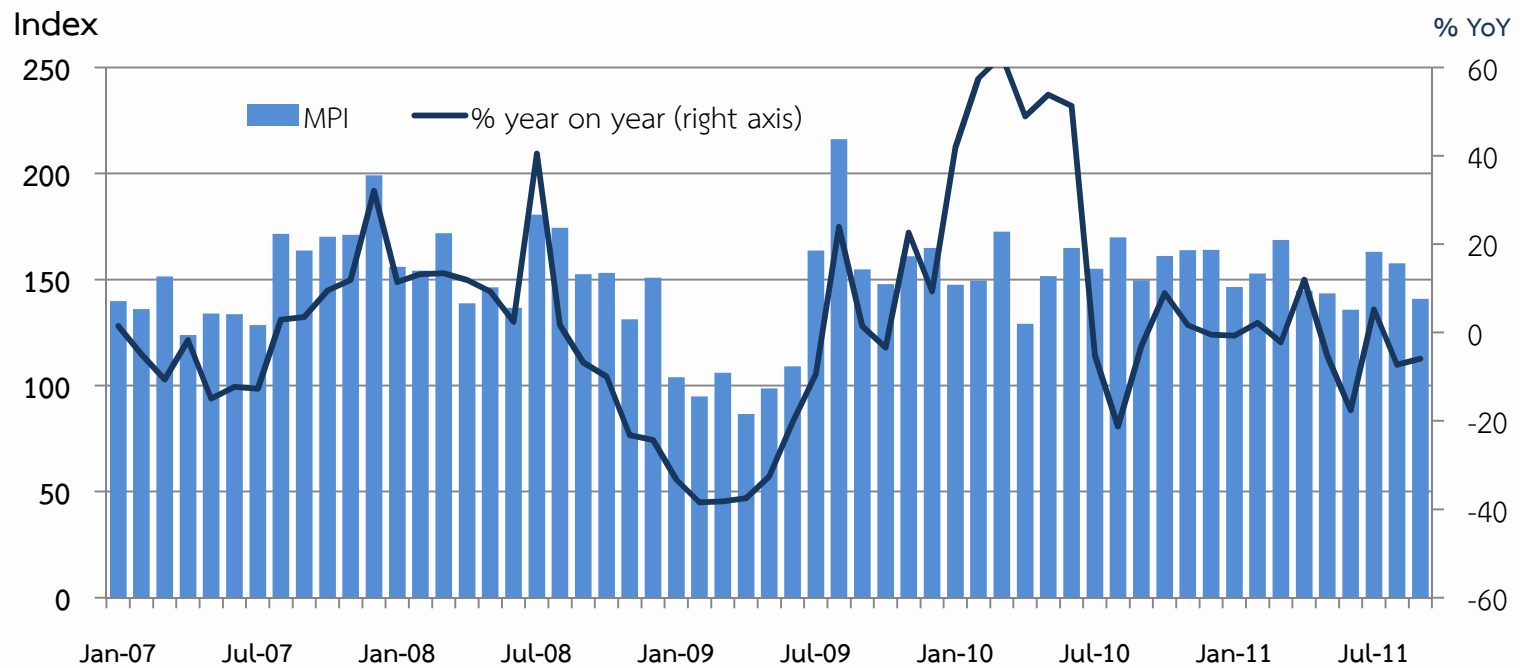


FARM INCOME FROM MAJOR CROPS,
MAJOR CROP PRODUCTION AND MAJOR CROP PRICES

% YoY	2010	2011					
		H1	Q1	Q2	Q3	Aug	Sep
Farm Income	14.2	18.6	20.2	15.7	-10.4	-11.6	-11.2
Production	1.7	14.2	15.2	12.2	3.0	5.6	-2.3
Price	12.2	3.9	4.3	3.1	-13.0	-16.3	-9.1



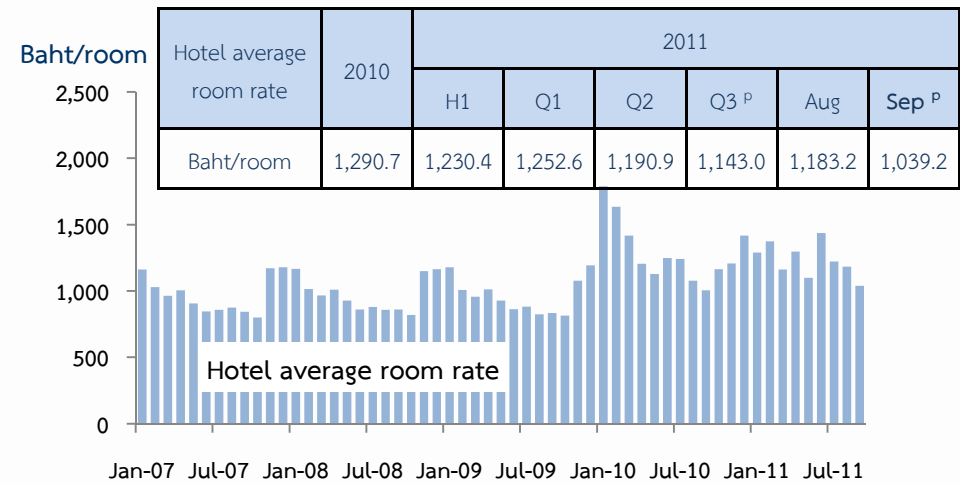
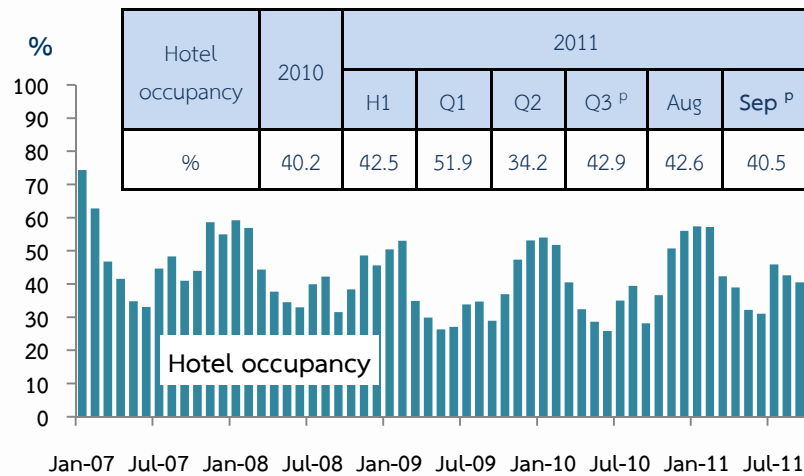
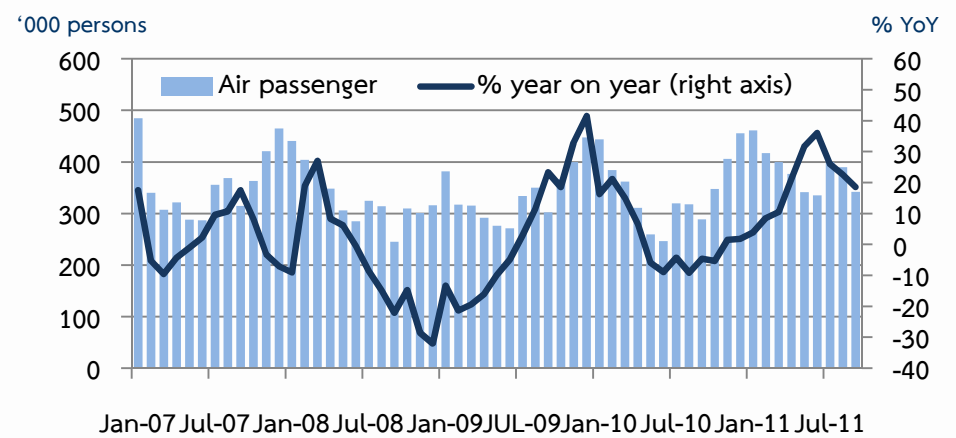
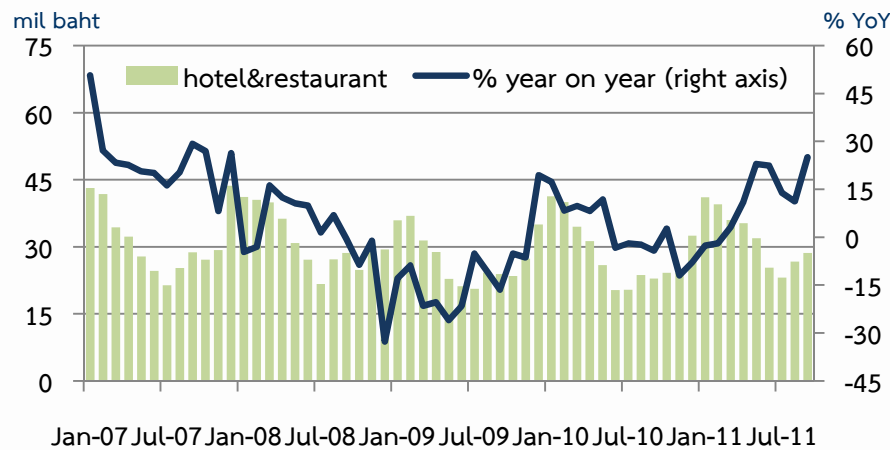
	2010	2011					
		H1	Q1	Q2	Q3 ^P	Aug	Sep ^P
MPI level	156.6	148.7	155.8	141.6	153.9	157.6	140.9
% YoY	16.9	-2.5	-0.4	-4.7	-2.8	-7.3	-5.9
MPI level, SA	-	-	170.3	161.0	143.2	134.9	132.3
% MoM, % QoQ S.A.	-	-	18.5	-5.6	-11.1	-19.0	-1.9





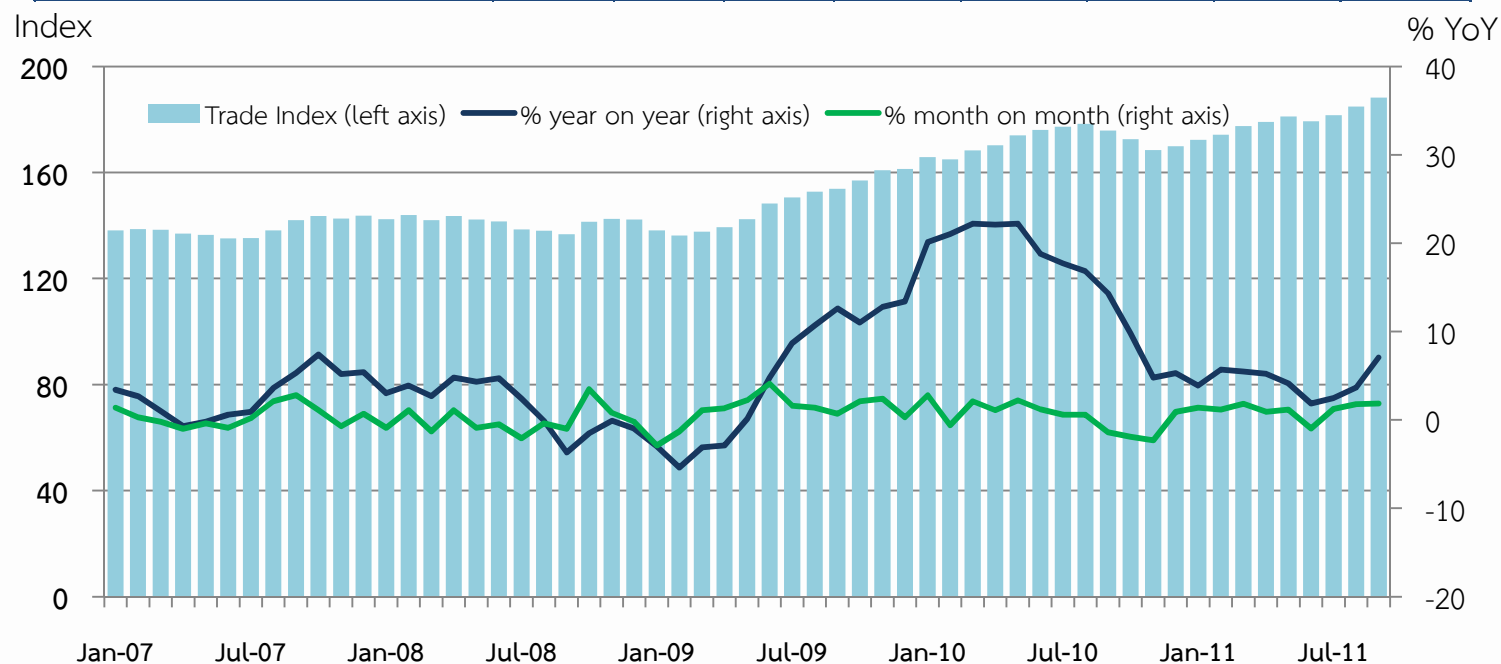
	2010	2011					
		H1	Q1	Q2	Q3 ^P	Aug	Sep ^P
Hotel&restaurant	344.2	209.8	116.9	92.9	78.5	26.7	28.6
% YoY	3.4	7.0	-0.7	18.5	16.9	11.2	25.0

	2010	2011					
		H1	Q1	Q2	Q3	Aug	Sep
Air passenger	4,141.9	2,331.8	1,278	1,053.6	1,141.5	389.6	341.7
% YoY	2.2	16.2	7.4	29.0	23.3	22.6	18.5



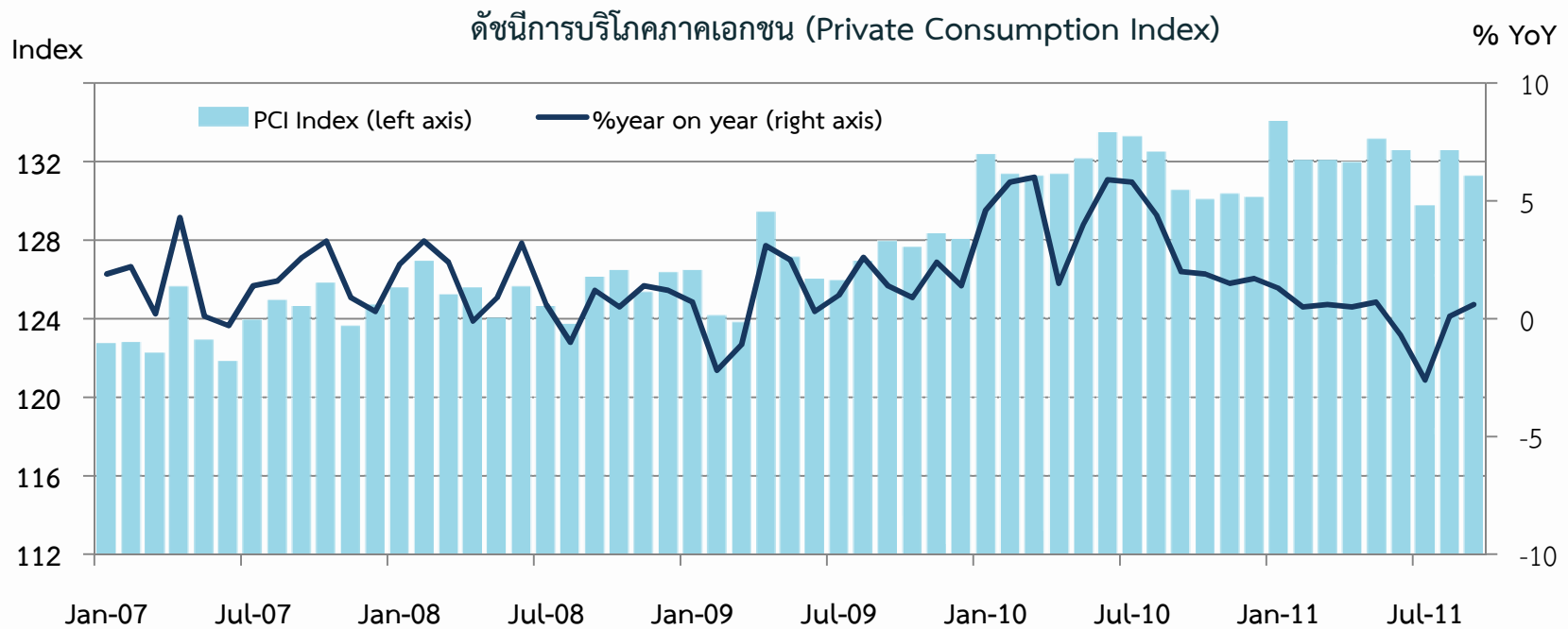


	Weight	2010	2011					
			H1	Q1	Q2	Q3 ^P	Aug	Sep ^P
Trade Index	100%	171.8	177.3	174.7	179.8	184.9	184.8	188.2
% YoY		15.9	4.4	5.0	3.7	4.4	3.7	7.1
Motor Vehicles/Cycles Trade	46.0%	167.7	177.3	173.9	180.7	174.3	173.8	176.8
% YoY		16.9	8.0	7.6	8.4	0.8	-0.6	1.5
Wholesale Trade	21.0%	197.7	201.0	197.8	204.2	236.5	238.1	245.0
% YoY		17.9	2.8	6.5	-0.6	16.0	16.8	23.6
Retail Trade	33.0%	163.5	164.5	163.3	165.7	171.8	171.6	173.6
% YoY		13.4	0.4	0.6	0.1	1.9	1.2	4.5



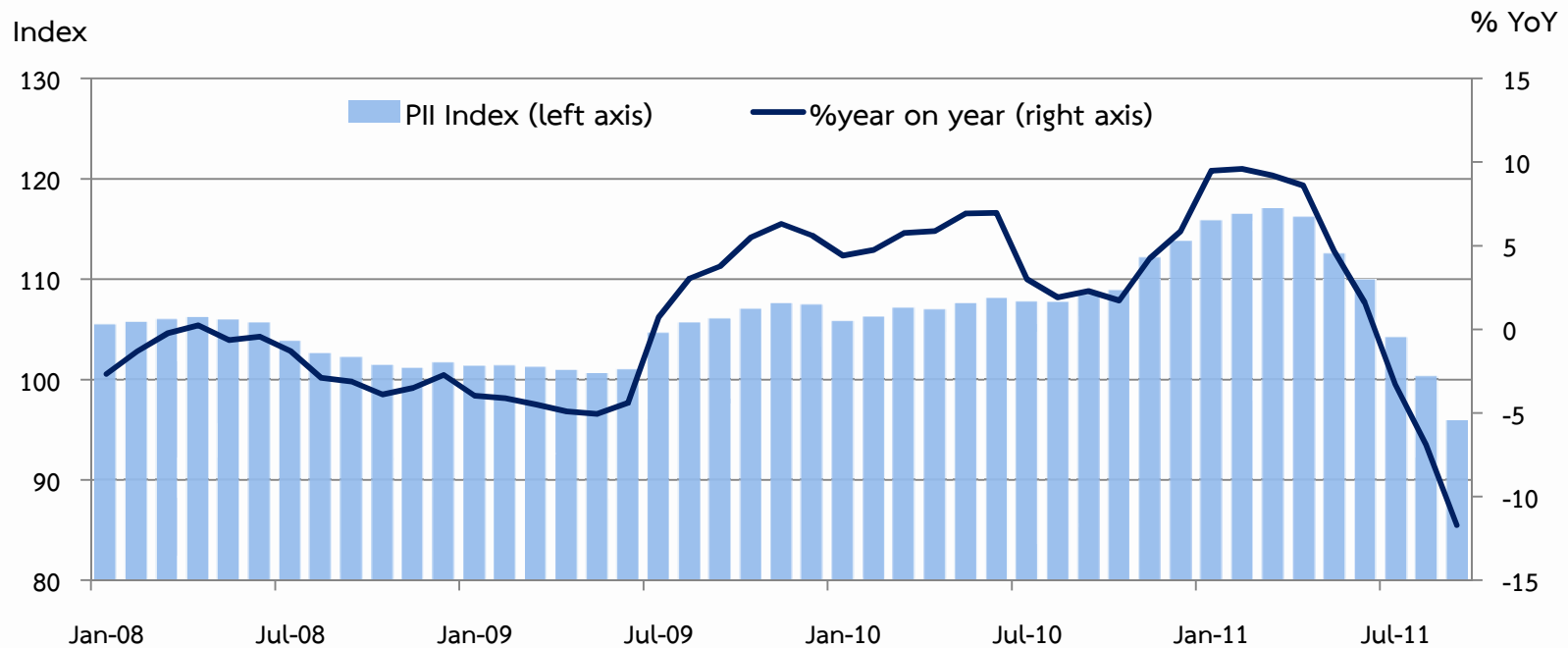


	2010	2011					
		H1	Q1	Q2	Q3 ^P	Aug	Sep ^P
PCI	131.5	132.6	132.7	132.5	131.2	132.5	131.2
% YoY	3.7	0.5	0.8	0.2	-0.7	0.1	0.6
% MoM, % QoQ S.A.		1.1	2.0	-0.1	-1.0	2.2	-1.0





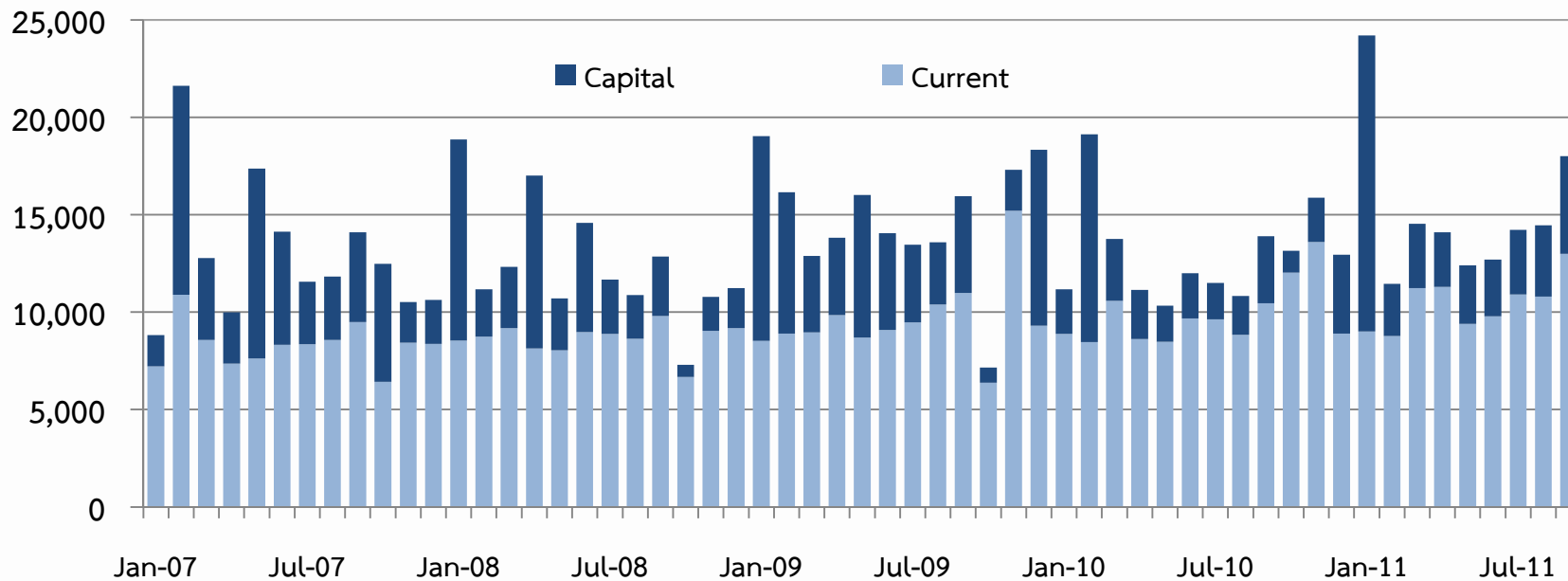
	2010	2011					
		H1	Q1	Q2	Q3 ^P	Aug	Sep ^P
PII	108.3	114.5	116.3	112.8	100.0	100.2	95.8
% YoY	4.4	7.2	9.4	5.0	-7.3	-6.9	-11.7
% MoM, % QoQ S.A.	4.4	4.4	4.3	-3.0	-11.3	-3.8	-4.4





Expenditure	2010	2011					
		H1	Q1	Q2	Q3	Aug	Sep
Current	118,153.8	59,518.6	29,028.8	30,489.8	34,700.1	10,801.9	12,994.2
% YoY	2.1	8.8	4.0	13.8	19.9	22.2	24.2
Capital	37,599.8	29,881.4	21,169.3	8,712.0	11,981.7	3,650.9	5,009.0
% YoY	-39.4	30.8	31.1	30.1	64.0	83.1	45.6
Total	155,753.6	89,400.0	50,198.2	39,201.8	46,681.9	14,452.8	18,003.2
% YoY	-12.4	15.3	13.9	17.1	28.8	33.4	29.5

Million Baht



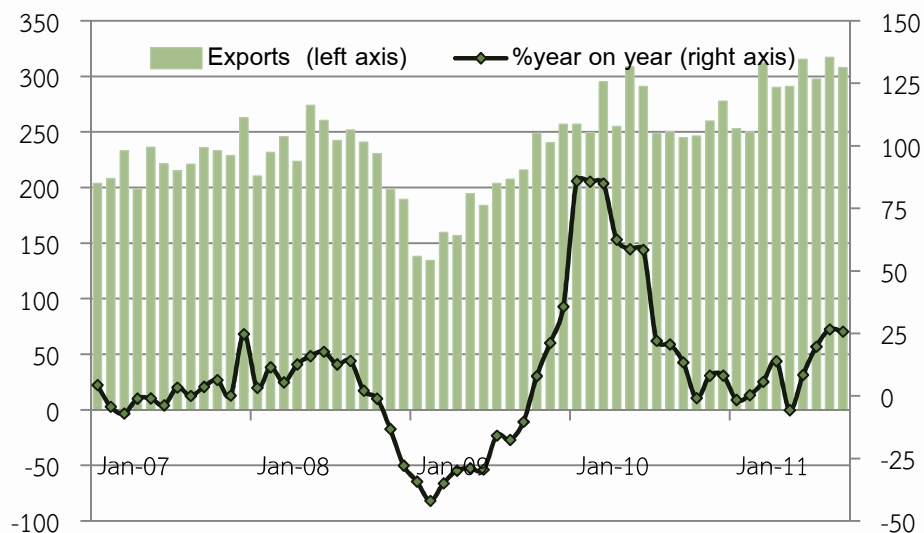


	2010	2011					
		H1	Q1	Q2	Q3	Aug	Sep
EXPORTS	3,184.5	1,711.9	815.1	896.8	922.5	317.1	307.9
% YoY	36.1	3.3	1.6	4.9	24.0	26.6	25.7
IMPORTS	1,384.5	733.1	350.5	382.6	416.8	136.2	150.6
% YoY	19.9	12.5	9.1	15.8	10.9	4.4	26.6

Exports

Million us\$

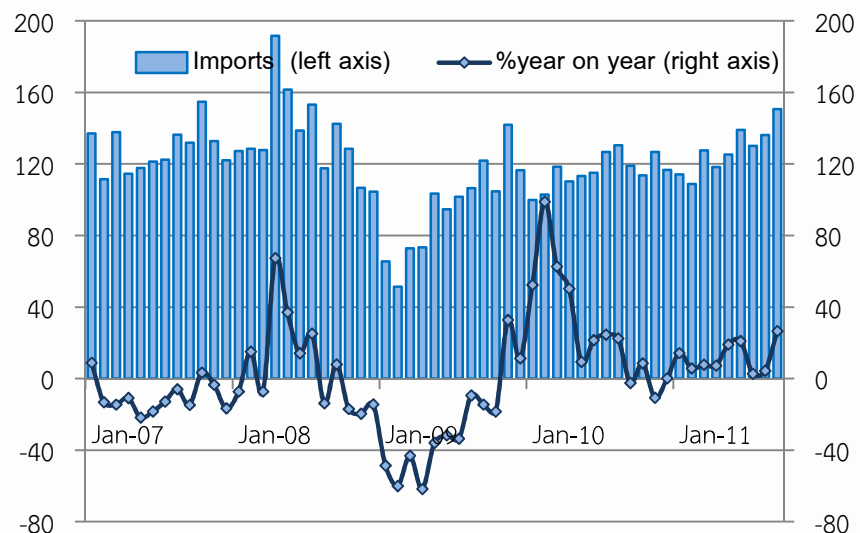
% YoY

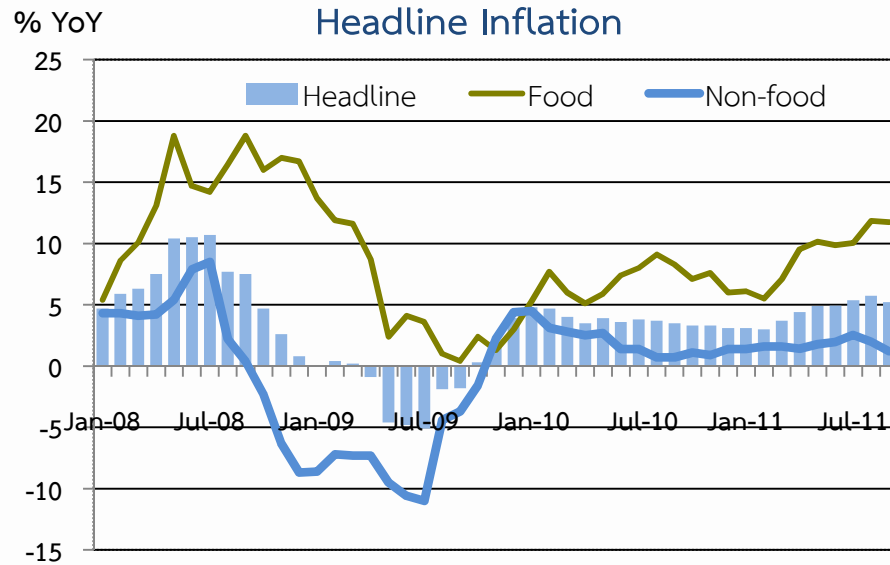


Imports

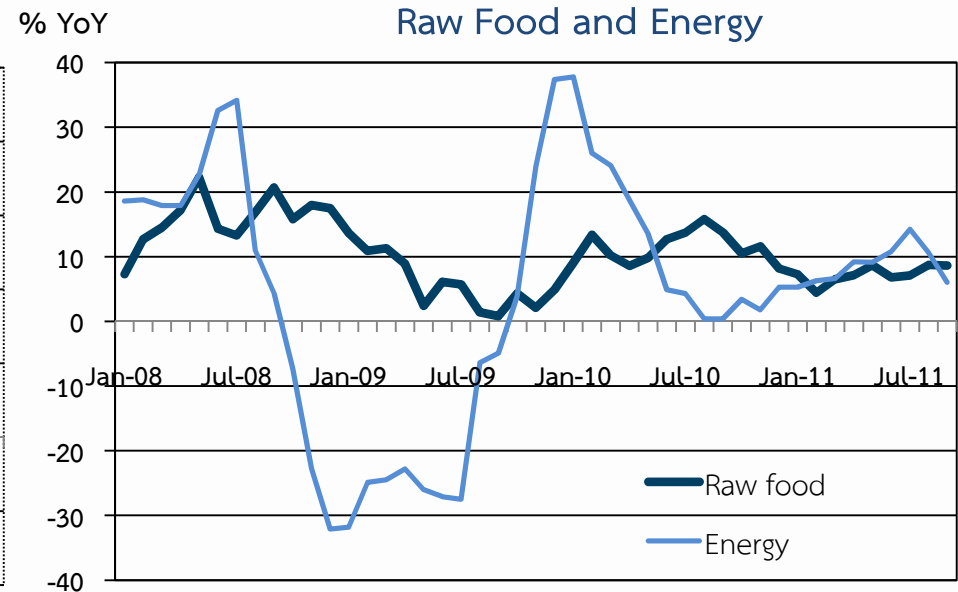
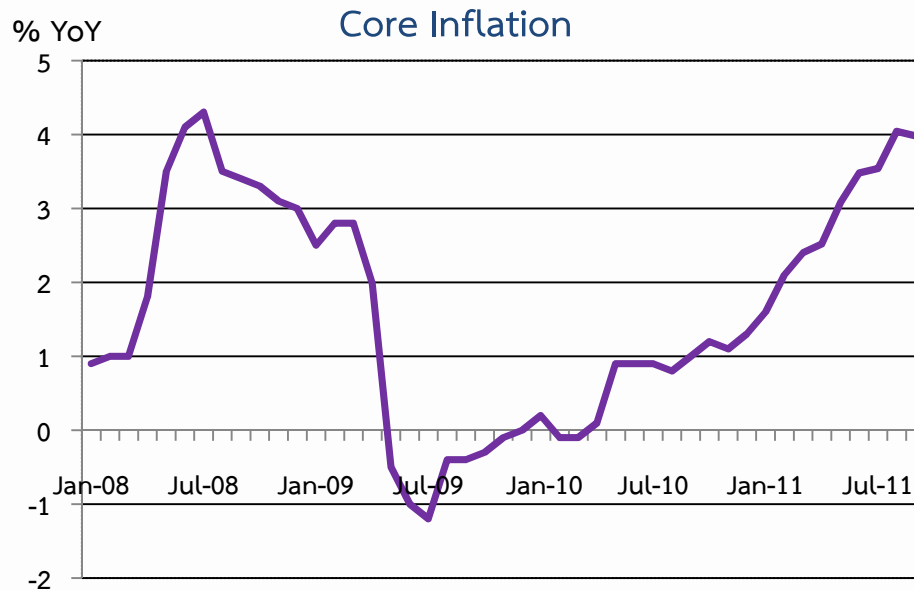
Million us\$

% YoY





	2010	2011					
		H1	Q1	Q2	Q3	Aug	Sep
Headline	3.7	4.0	3.28	4.74	5.44	5.73	5.21
Food	7.0	8.1	6.25	9.85	11.22	11.85	11.74
Non-food	1.9	1.6	1.54	1.71	1.91	2.00	1.20
Core	0.7	2.5	2.02	3.03	3.85	4.04	3.98





%	% of Total Labor Force (as of Aug 2011)	2010	2011				
			H1	Q1	Q2	July	Aug
Labor Force (1,000 Persons)	100.0	7,232	7,218	7,249	7,187	7,353	7,386
Employed persons	99.2	0.6	7,143	1.1	1.6	2.5	1.4
• Agriculture	47.4	-0.7	3.8	1.7	5.9	13.7	3.7
• Non-agriculture	51.8	2.5	-0.6	0.6	-1.7	-7.6	-0.6
- Wholesale & retail trade	14.5	2.5	-2.1	0.8	-5.0	-1.4	-3.9
- Manufacturing	9.3	0.8	-8.2	-11.7	-4.5	-20.7	5.0
- Construction	6.6	1.7	-3.8	2.2	-8.9	-18.6	11.3
- Hotel & restaurants Services	5.5	5.9	-16.7	-16.7	-16.8	-10.0	-7.6
- Others	15.9	-6.4	15.0	15.8	14.1	1.0	-2.3
Unemployed persons	0.6	-27.2	-35.4	-18.1	-50.2	-37.2	-47.8
Seasonally inactive persons	0.3	73.7	-47.6	-30.6	-59.5	-92.1	814.4

Unemployment	Aug-10	Aug-11
In thousand persons	78	41
rate	1.1	0.6

'000 person 300





Deposits and Credits of Commercial Banks

Economic Research Division, Northern Region Office

Commercial Bank's Deposits

	2010	2011				
		H1	Q1	Q2	Jul	Aug
Deposits	407.4	435.1	431.8	435.1	434.1	432.1
% YoY	3.9	8.7	8.3	8.7	10.1	10.8

Commercial Bank's Credits

	2010	2011				
		H1	Q1	Q2	Jul	Aug
Credits	349.4	370.9	354.5	370.9	369.4	380.2
% YoY	12.8	14.1	11.9	14.1	13.1	14.7

Billion Baht

% YoY Billion Baht

% YoY

