

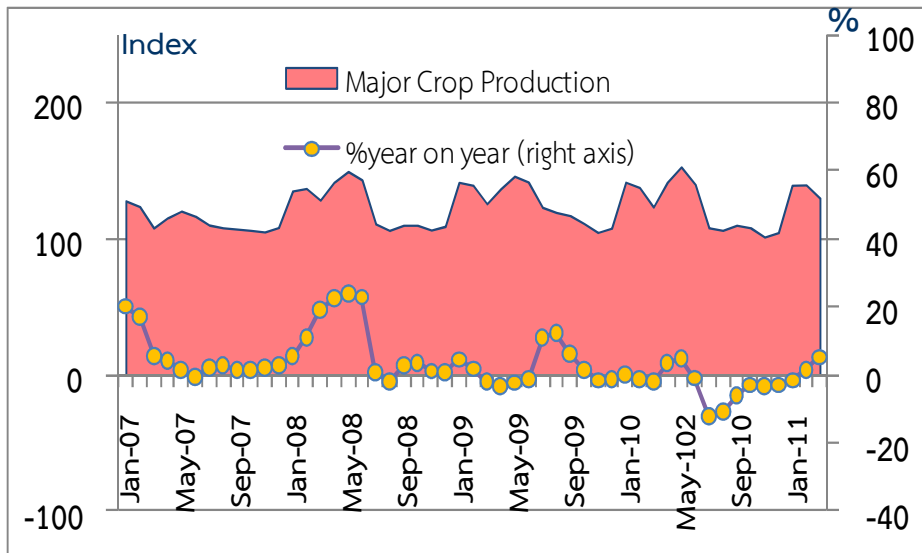
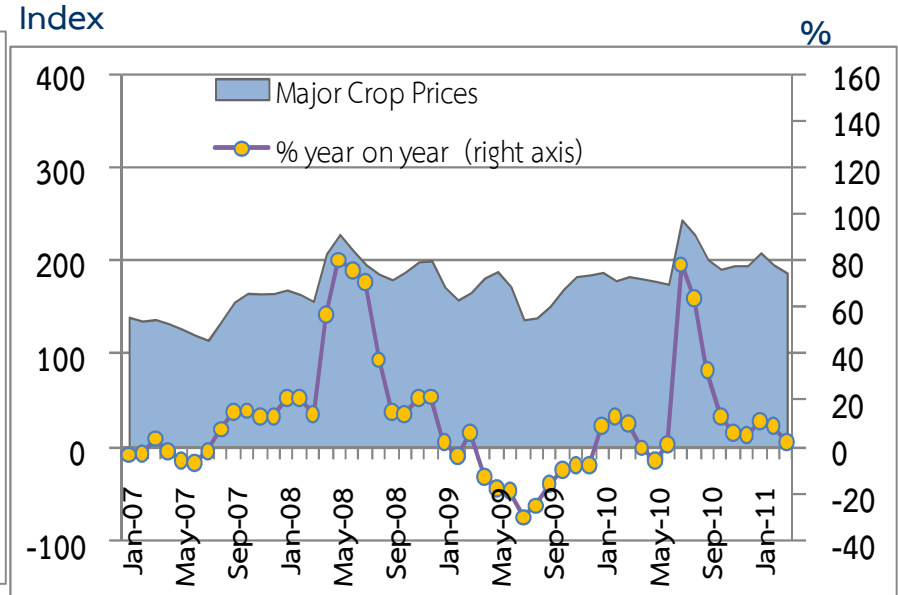
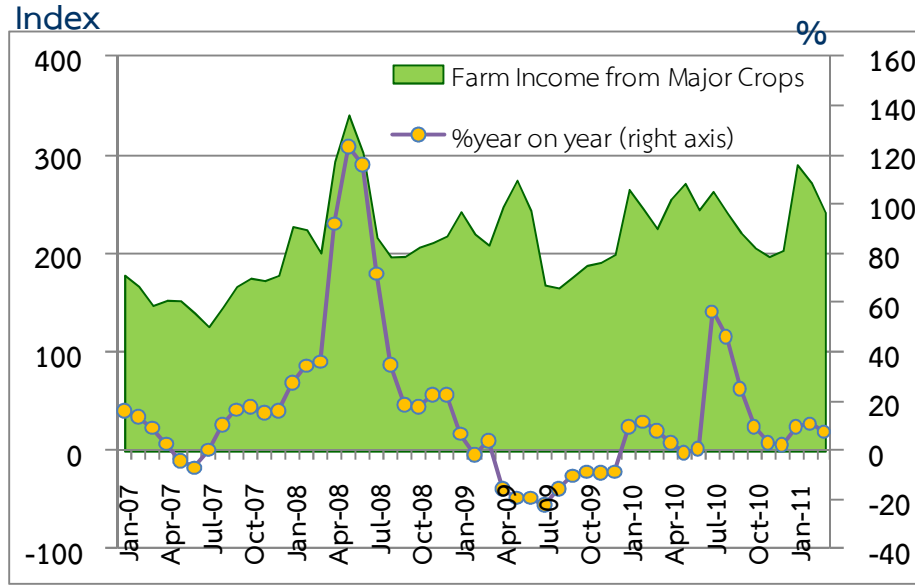


*The Northern Region :*  
*Economic Conditions in March 2011*



# Farm Income from Major Crops

Regional Economic Division, Northern Region Office



CHANGE IN FARM INCOME FROM MAJOR CROPS,  
 MAJOR CROP PRODUCTION AND MAJOR CROP PRICES

% (Y-O-Y)	2010	2010			2011		
		H1	Q3	Q4	Q1	Feb	Mar
Farm Income	9.4	6.6	35.9	3.7	8.9	10.9	7.4
Production	-2.7	0.2	-8.5	-3.1	2.4	1.4	5.2
Price	12.4	6.4	48.6	7.0	6.3	9.3	2.1

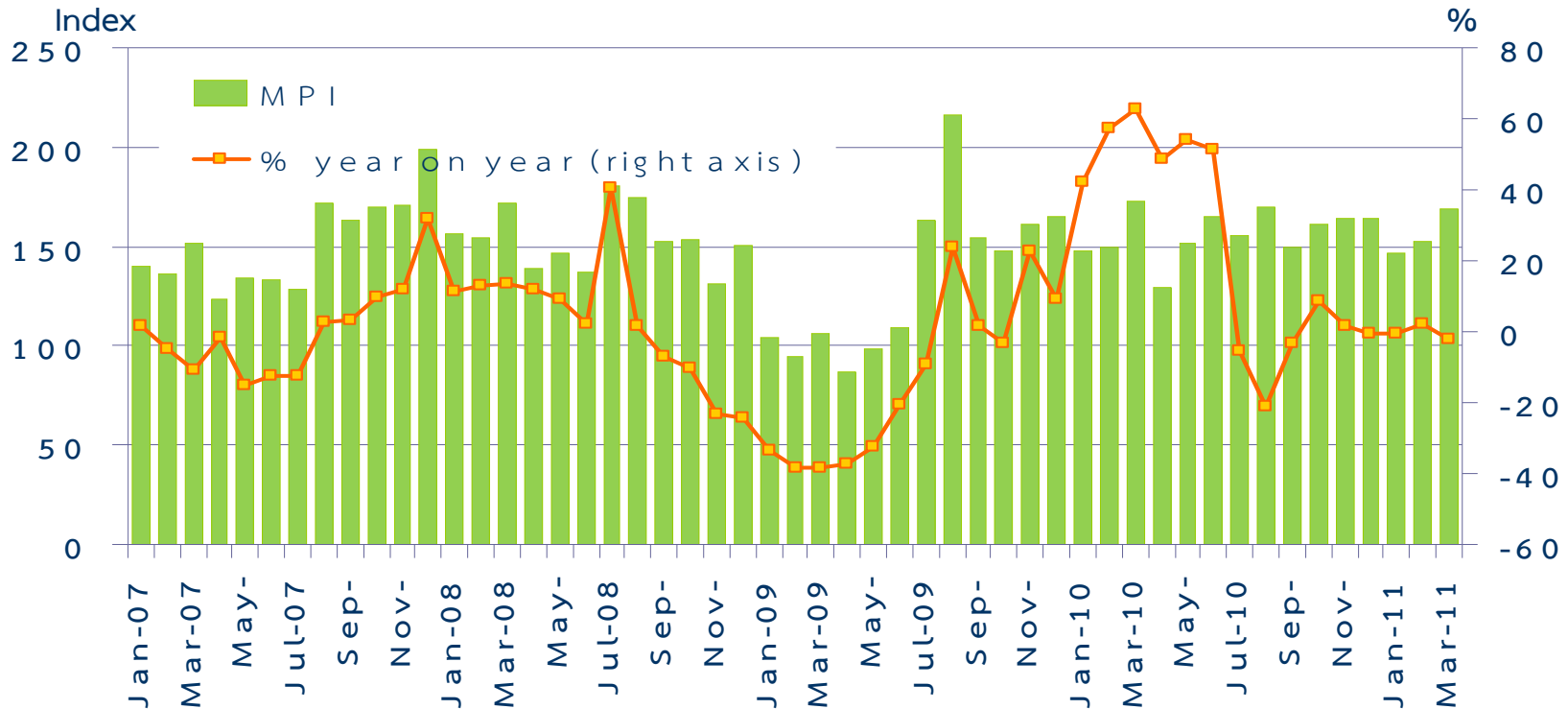
Source : Index constructed using data from Ministry of Agriculture and Co-operatives. (2002 =100)



# Manufacturing Production Index

Regional Economic Division, Northern Region Office

	2010	2010			2011		
		H1	Q3	Q4	Q1	Feb	Mar
MPI level	156.6	152.5	158.3	163.0	155.8	152.8	168.7
%YoY	16.9%	52.7%	-11.1%	3.2%	-0.4%	2.2%	-2.2%
MPI level, SA	-	-	147.3	144.0	170.3	169.7	166.4
% MoM,%QoQ S.A.	-	-	-10.2%	0.07%	18.2%	7.3%	-1.6%



Source: Bank of Thailand, Northern Region Office

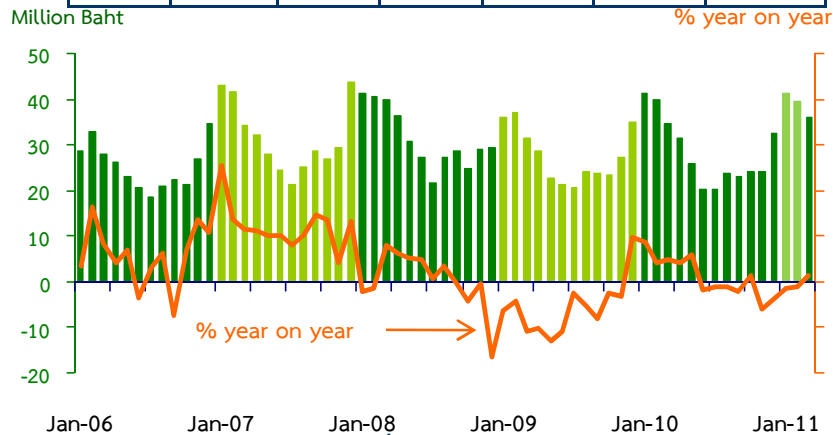


# Tourism

Regional Economic Division, Northern Region Office

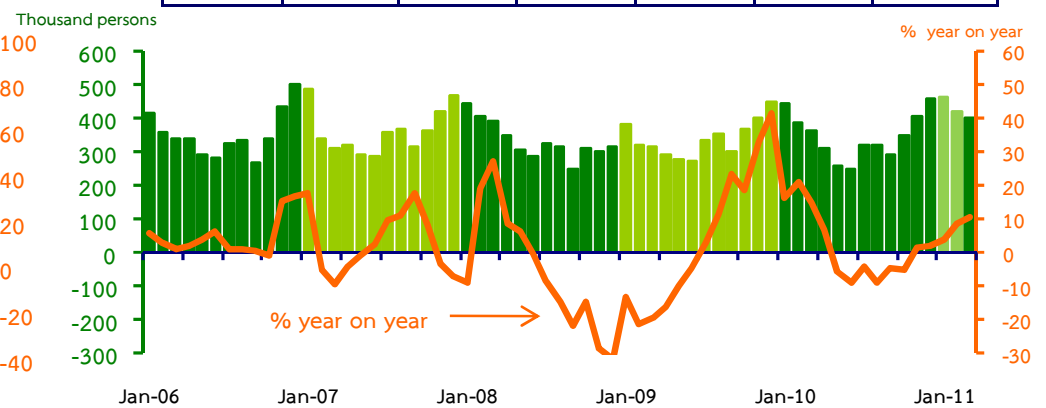
### Hotel and restaurant VAT

2010	2010			2011		
	H1	Q3	Q4	Q1	Feb	Mar
344.1	195.6	67.2	80.8	116.6	39.5	36.0
(3.4%)	(10.0%)	(-2.5%)	(-6.3%)	(-0.9%)	(-1.9%)	(2.4%)



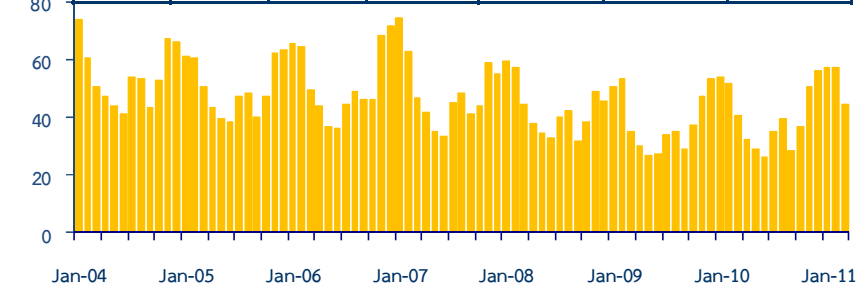
### Air passengers

2010	2010			2011		
	H1	Q3	Q4	Q1	Feb	Mar
4,141.9	2,006.9	925.7	1,209.1	1,278	417.0	399.8
(2.2%)	(8.3%)	(-6.1%)	(-0.4%)	(7.4%)	(8.5%)	(10.5%)



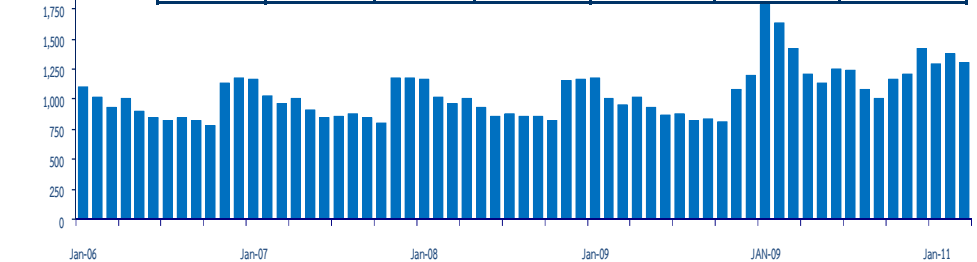
### Hotel occupancy rate

2010	2010			2011		
	H1	Q3	Q4	Q1-p	Feb	Mar-p
40.2	38.9	34.6	47.6	52.9	57.2	44.4



### Hotel average room rate

2010	2010			2011		
	H1	Q3	Q4	Q1-p	Feb	Mar-p
1,290.7	1,415.2	1,094	1,305.1	1,316.3	1,374.6	1,300.8

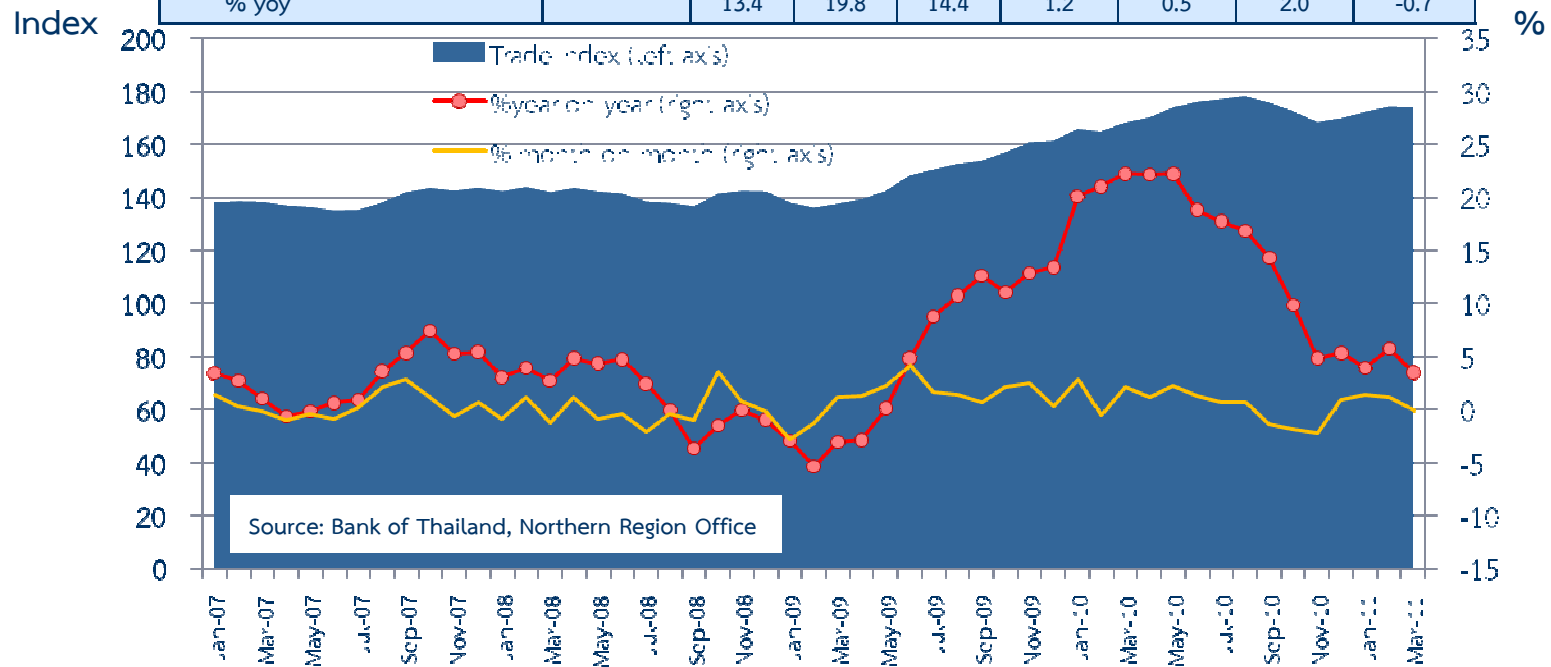




# Trade Index

Regional Economic Division, Northern Region Office

	Weight	2010	2010			2011		
			H1-10	Q3-10	Q4-10	Q1 <sup>P</sup>	Feb-11	Mar-11 <sup>P</sup>
Trade Index	100%	171.8	169.9	177.1	170.3	173.5	174.3	174.1
% year on year (%yoy)		15.9	21.0	16.2	6.6	4.3	5.7	3.5
Motor Vehicles/Cycles Trade	46.0%	167.7	164.2	173.0	169.6	173.8	174.9	176.6
% yoy		16.9	21.1	17.9	8.6	7.5	9.2	8.1
Wholesale Trade	21.0%	197.7	195.6	203.9	195.8	192.2	190.9	187.3
% yoy		17.9	23.0	15.5	11.1	3.5	4.0	-0.1
Retail Trade	33.0%	163.5	163.9	168.5	157.6	163.1	164.5	163.6
% yoy		13.4	19.8	14.4	1.2	0.5	2.0	-0.7



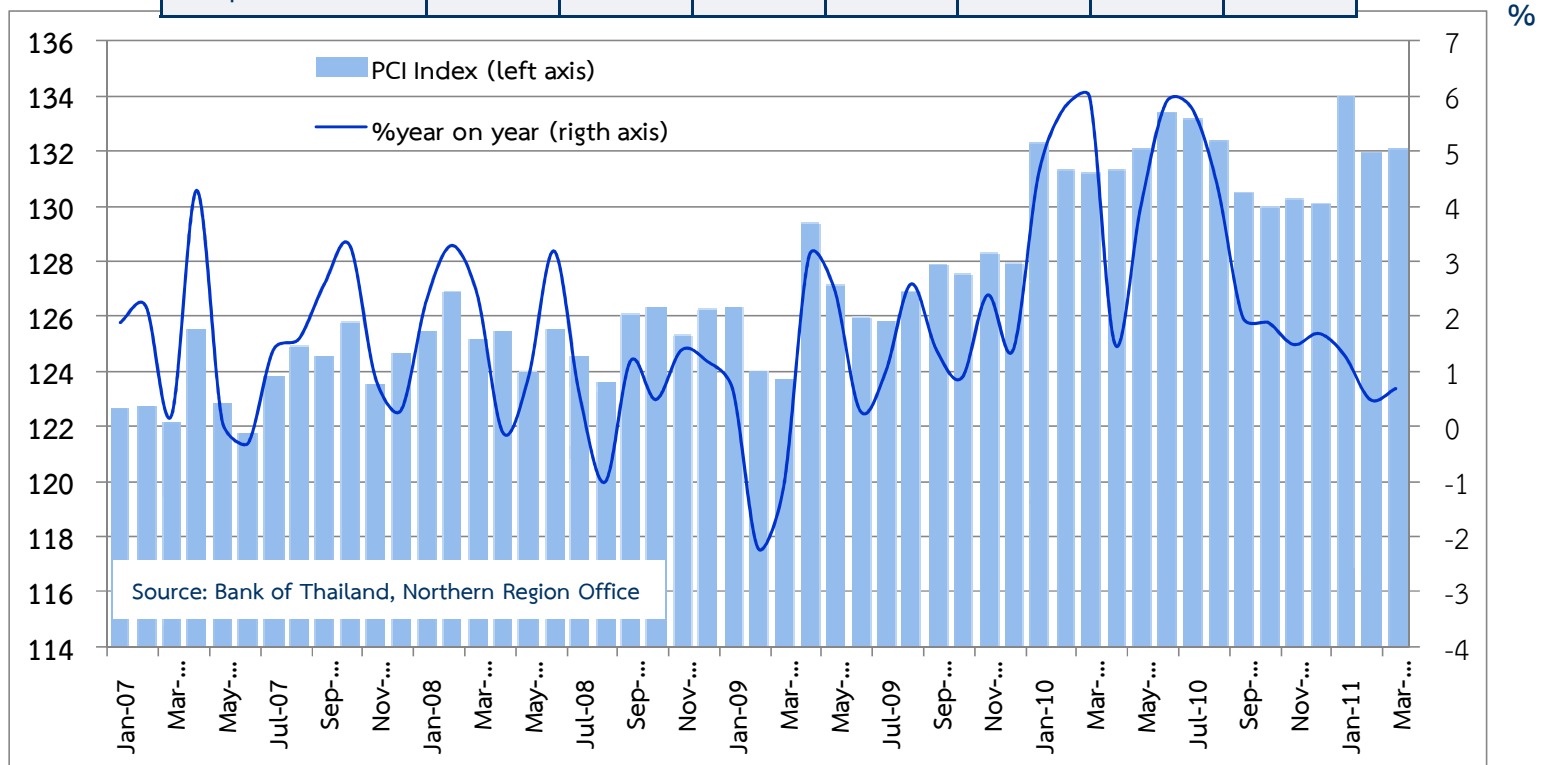


# Private Consumption Index (Seasonally Adjusted)

Regional Economic Division, Northern Region Office

	2010	2010			2011		
		H1	Q3	Q4	Q1 <sup>P</sup>	Feb	Mar <sup>P</sup>
PCI	131.5	131.9	132.0	130.1	132.7	132.0	132.1
% year on year	3.7	4.6	4.1	1.7	0.8	0.5	0.7
%month on month, %quarter on quarter		3.5	-0.2	-1.4	2.0	-1.5	0.1

Index

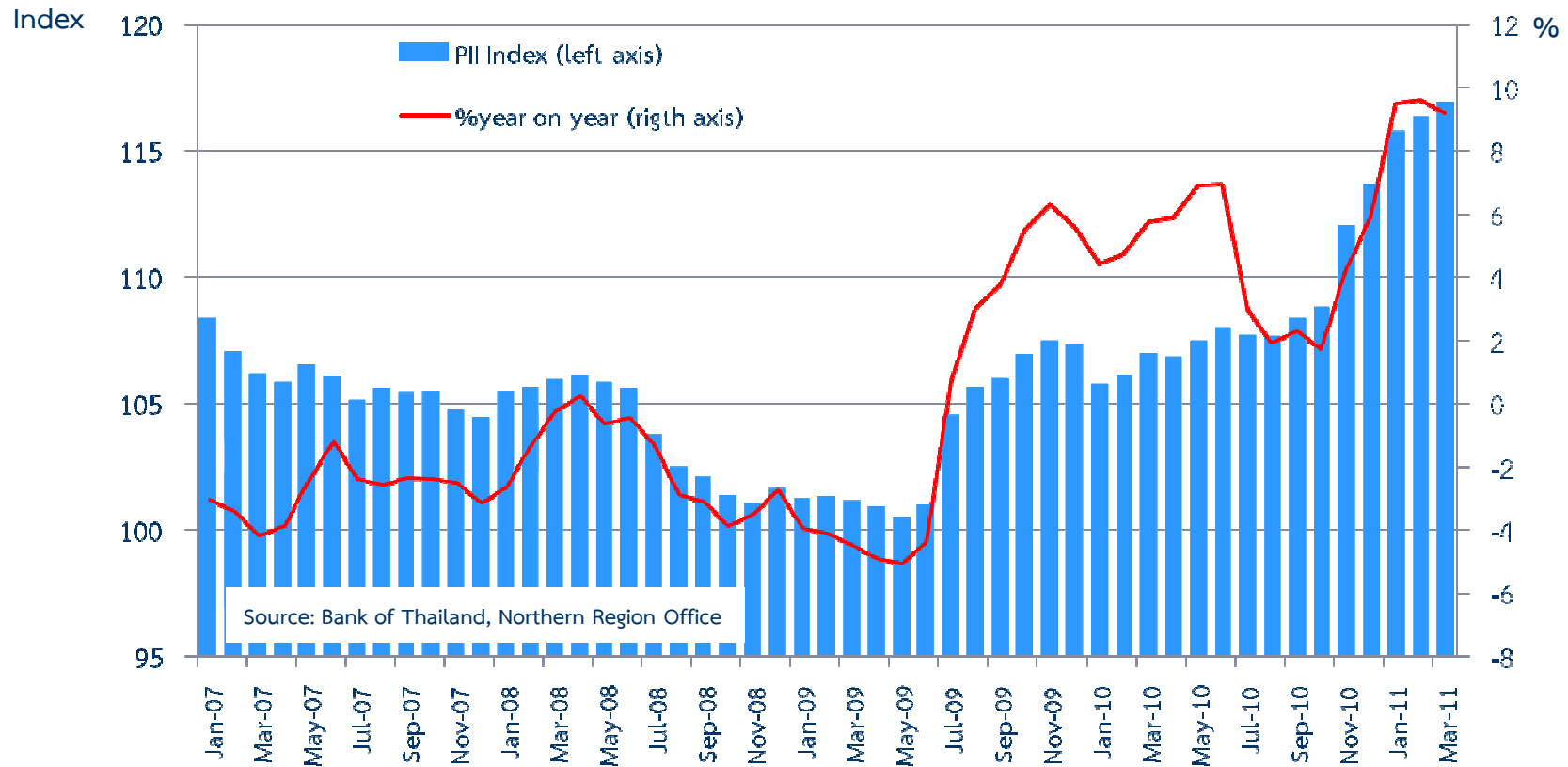




# Private Investment Index (Seasonally Adjusted)

Regional Economic Division, Northern Region Office

	2010	H1-10	Q3-10	Q4-10	Q1-11	Feb-11	Mar-11
PII	108.3	106.9	107.9	111.5	116.3	116.3	116.9
%year on year	4.4	5.8	2.4	3.9	9.4	9.6	9.2
%month on month, %quarter on quarter	4.4	0.5	0.4	3.3	4.3	0.5	0.5



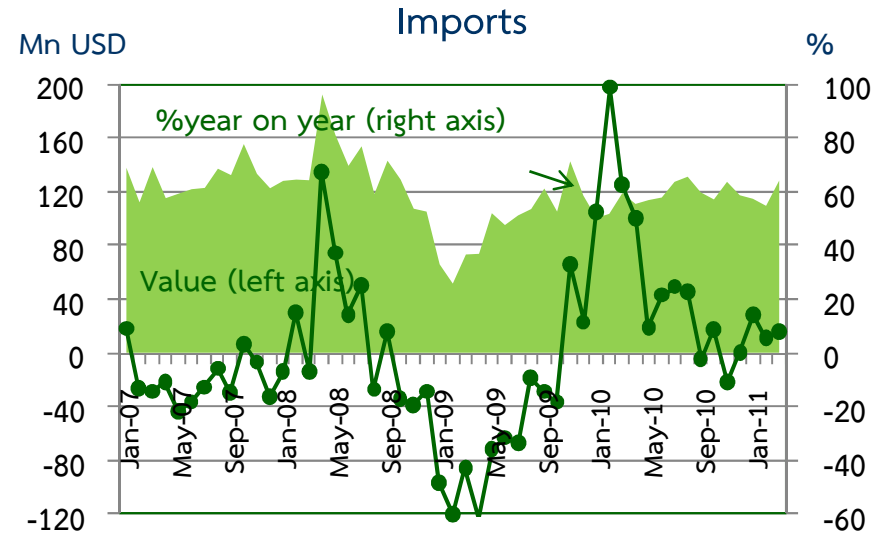
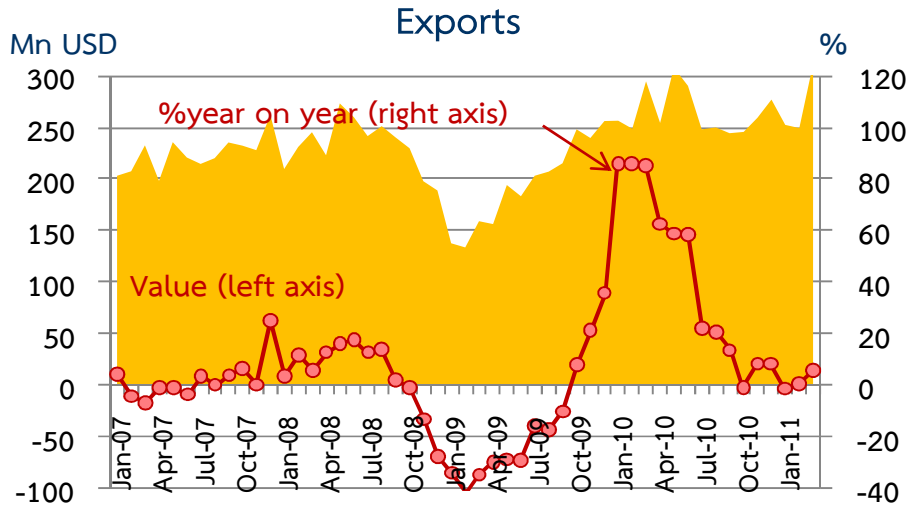


# Foreign Trade

Regional Economic Division, Northern Region Office

	2010	2010			2011		
		H1	Q3	Q4	Q1	Feb	Mar
EXPORTS	3,184.5	1,656.7	744.0	783.9	815.0	250.1	312.0
	36.1%	71.2%	18.6%	5.1%	1.6%	0.3%	5.6%
IMPORTS	1,384.5	659.6	376.0	356.9	350.5	108.8	127.6
	19.9%	42.9%	13.9%	-1.6%	9.1%	5.7%	7.8%
Trade Balance	1,800.0	997.1	368.0	427.0	464.5	141.3	184.4

Sources: Customs Department

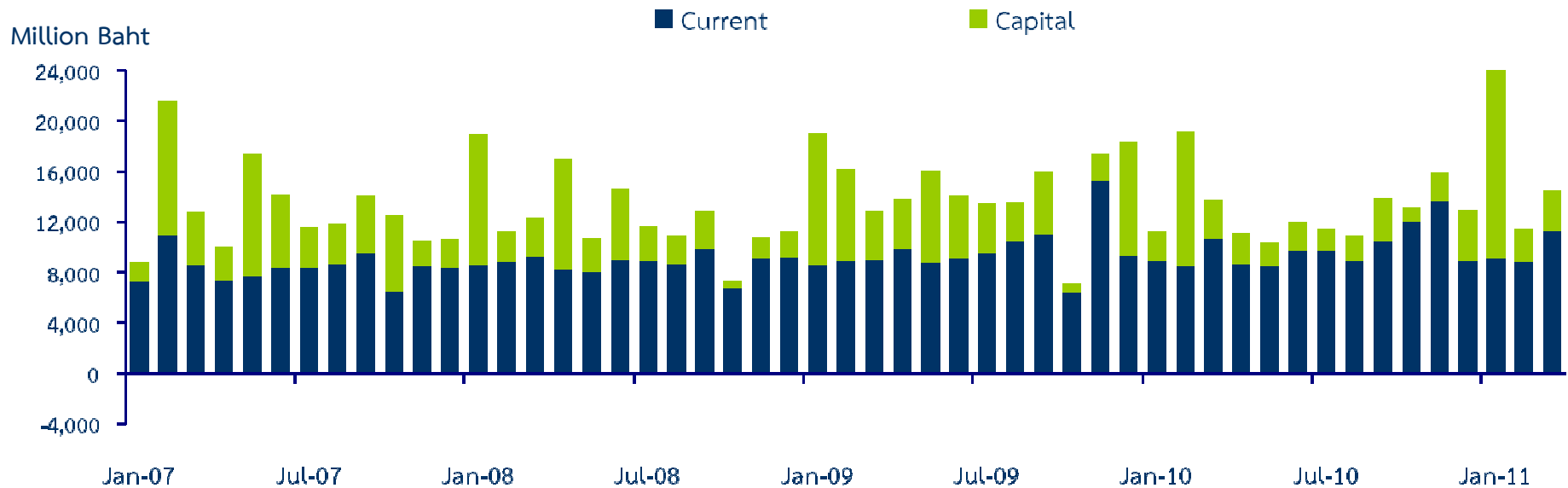




# Public Expenditure

Regional Economic Division, Northern Region Office

Expenditure	2010	2010			2011		
		H1	Q3	Q4	Q1	Feb	Mar
Current	118,153.8 (2.1)	54,705.8 (1.3)	28,928.9 (-6.2)	34,519.1 (11.7)	29,028.8 (4.0)	8,778.4 (3.8)	11,239.3 (6.3)
Capital	37,599.8 (-39.4)	22,838.0 (-39.8)	7,306.9 (-39.8)	7,454.9 (-37.4)	21,169.3 (31.1)	2,674.8 (-74.9)	3,293.6 (3.6)
Total	155,753.6 (-12.4)	77,543.8 (-15.7)	36,235.8 (-15.7)	41,974.0 (-1.9)	50,198.2 (13.9)	11,453.2 (-40.1)	14,532.9 (5.7)

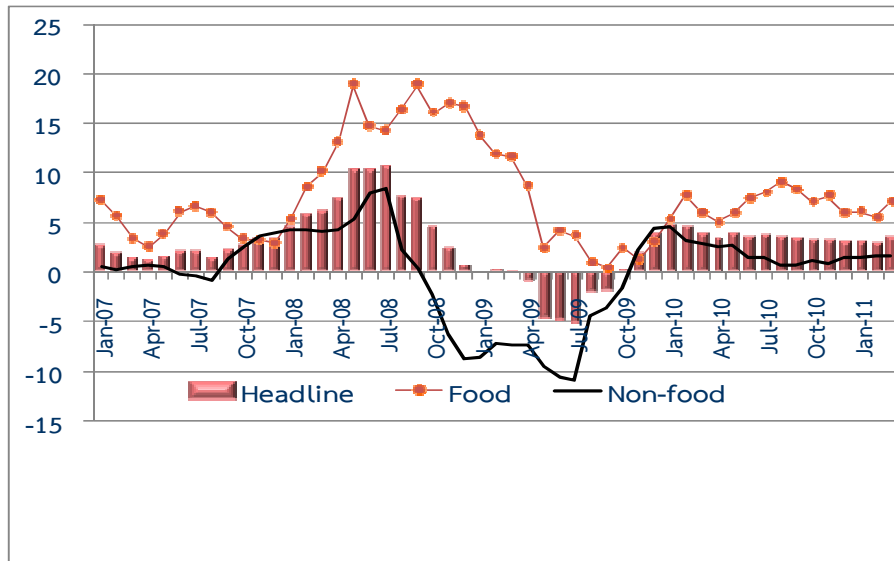




# Inflation

Regional Economic Division, Northern Region Office

%yoy **Headline Inflation**

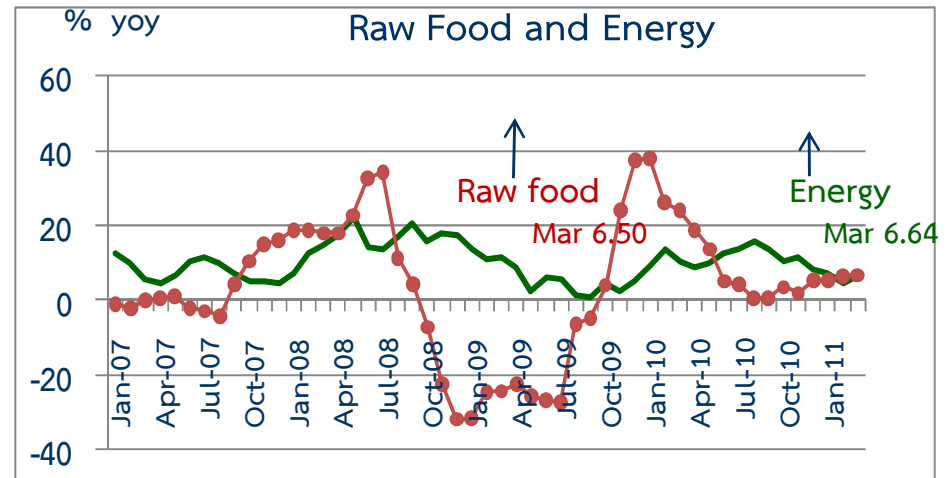
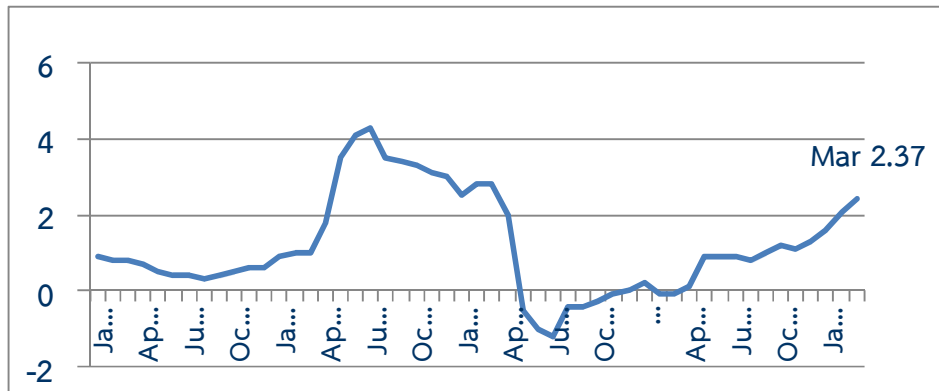


	2009	2010	2010				2011		
			H1	H2	Q3	Q4	Q1	Feb	Mar
<b>Headline</b>	-1.1	3.7	4.1	3.4	3.6	3.2	3.28	3.05	3.68
<b>Food</b>	5.1	7.0	6.2	7.7	8.5	6.9	6.25	5.53	7.15
<b>Non-food</b>	-5.6	1.9	2.9	1.0	0.9	1.1	1.54	1.57	1.64

Sources: Bureau of Trade and Economic Indices, Ministry of Commerce

Note: Northern region's Core CPI data has been released since January 2002

%yoy **Core Inflation**



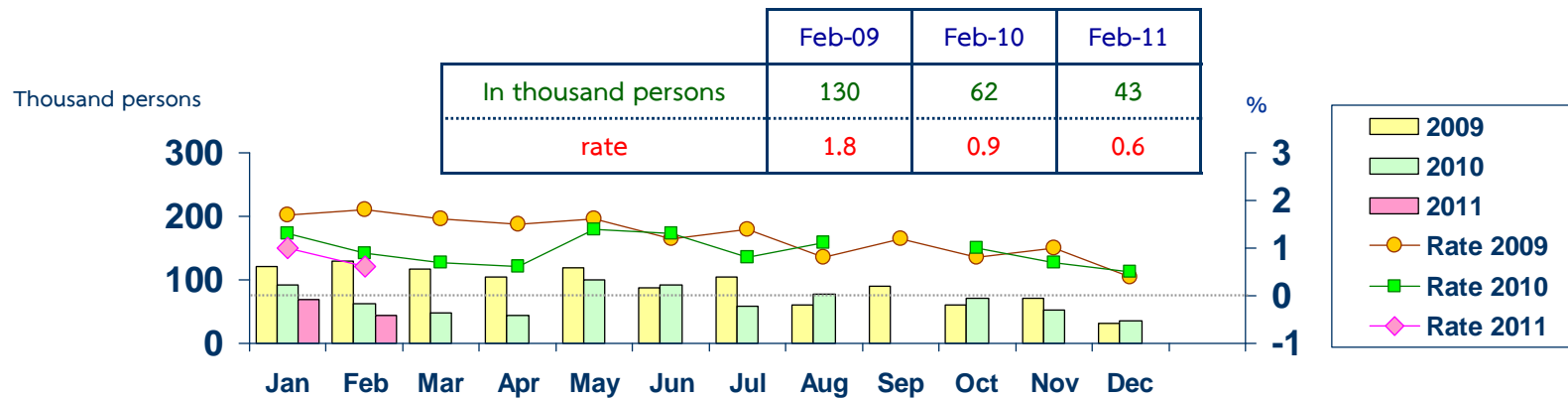


# Labor Force Survey

Regional Economic Division, Northern Region Office

	% of Total Labor Force (as of Feb 2011)	2010 ( $\Delta$ %)	H1-10 ( $\Delta$ %)	Q3-10 ( $\Delta$ %)	Q4-10 ( $\Delta$ %)	Jan-11 ( $\Delta$ %)	Feb-11 ( $\Delta$ %)
Labor Force (1,000 Persons)	100.0	7,232	7,176	7,266	7,308	7,232	7,228
Employed persons	98.9	0.6	1.3	-0.2	1.5	1.3	0.6
• Agriculture	43.1	-0.7	0.4	-5.0	1.6	10.7	1.3
• Non-agriculture	55.8	2.5	2.0	4.5	1.5	-6.2	0.1
- Wholesale & retail trade	14.5	2.5	4.7	-2.9	3.6	2.4	-4.6
- Manufacturing	10.2	0.8	0.8	6.1	-4.3	-27.9	-5.6
- Construction	8.1	1.7	2.6	5.5	-3.8	-11.0	1.3
- Hotel & restaurants Services	4.6	5.9	6.5	4.2	6.2	-21.7	-32.8
- Others	18.4	-6.4	-1.8	-26.2	3.6	8.6	23.7
Unemployed persons	0.6	-27.2	-35.8	-20.5	-2.3	-23.6	-31.3
Seasonally inactive persons	0.5	73.7	88.5	350.1	-50.0	-34.4	-22.4

## Unemployment



Source : National Statistical Office



# Deposits and Credits of Commercial Banks

Regional Economic Division, Northern Region Office

