



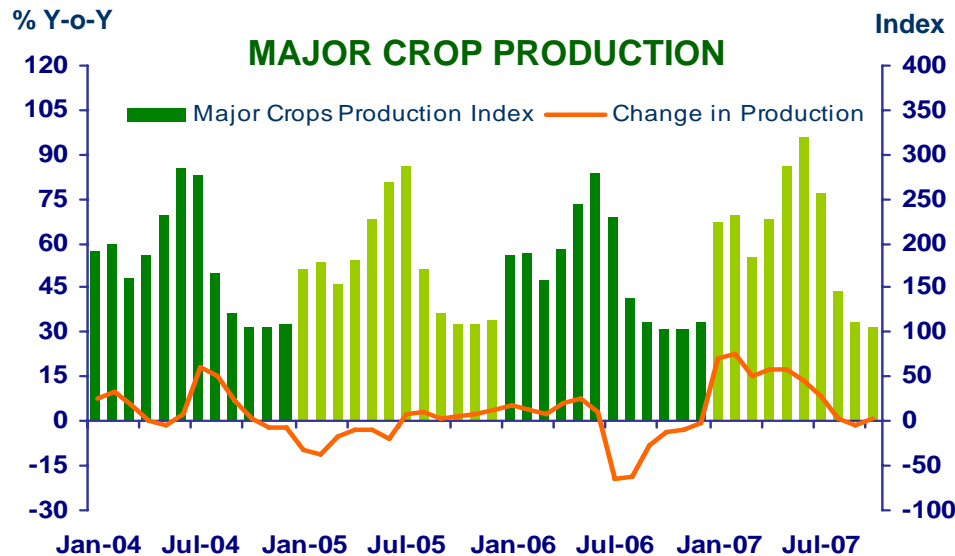
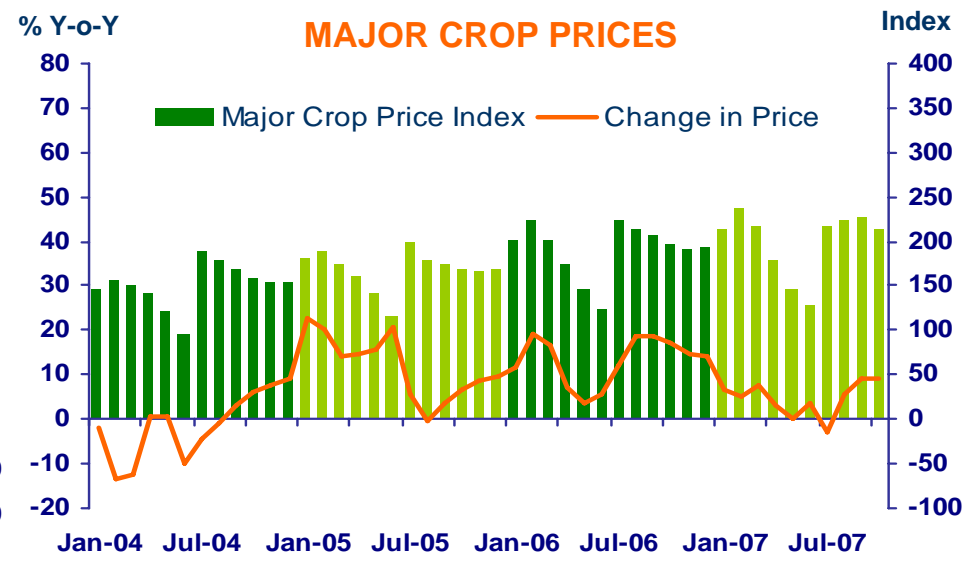
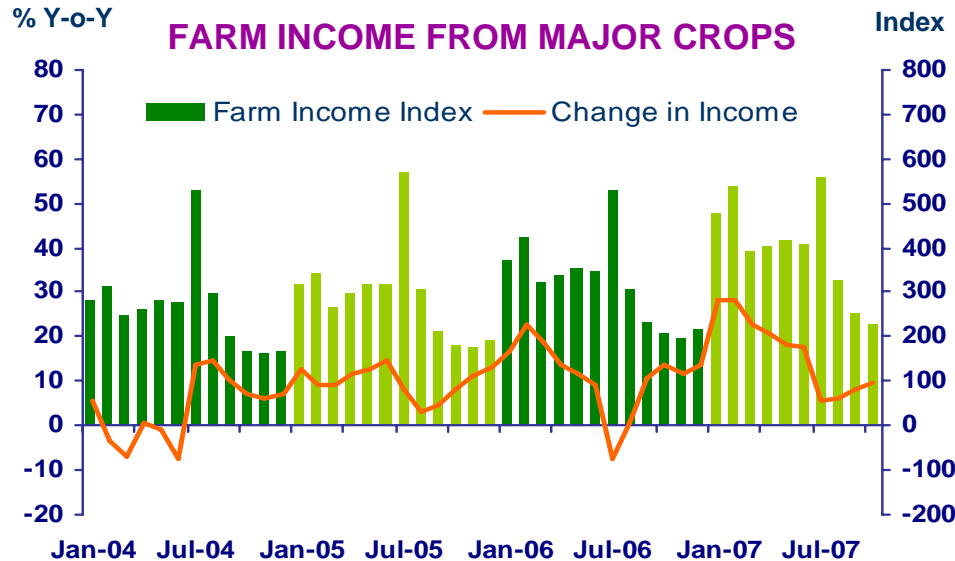
***Press Release on
Northern Region Economic Conditions in October 2007***

Bank of Thailand, Northern Region Office



FARM INCOME FROM MAJOR CROPS

Economic Research Division, Northern Region Office



CHANGE IN FARM INCOME FROM MAJOR CROPS, MAJOR CROP PRODUCTION AND MAJOR CROP PRICES

△ % (Y-O-Y)	2006	2007					
		Q1	Q2	H1	Q3	Sep	Oct
Farm Income	12.8	25.8	19.6	23.6	7.1	8.0	9.6
Production	-1.8	18.8	17.0	18.0	0.5	-1.3	0.7
Price	14.6	7.0	2.6	5.6	6.6	9.3	8.9

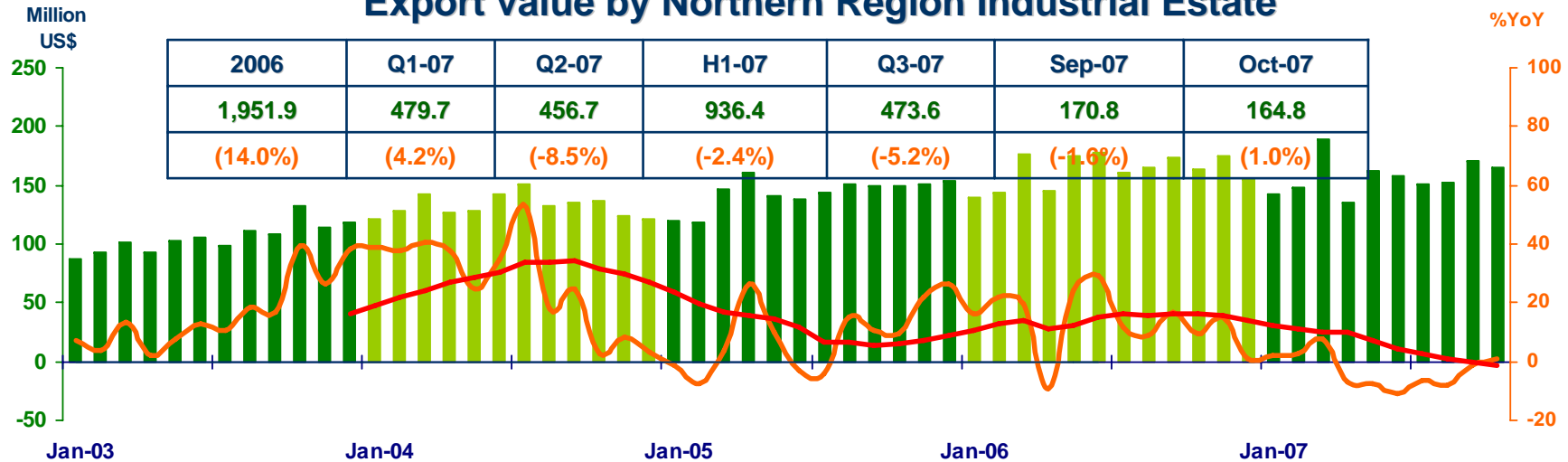
Source: Index constructed using data from Ministry of Agriculture and Co-operatives (1988 =100).



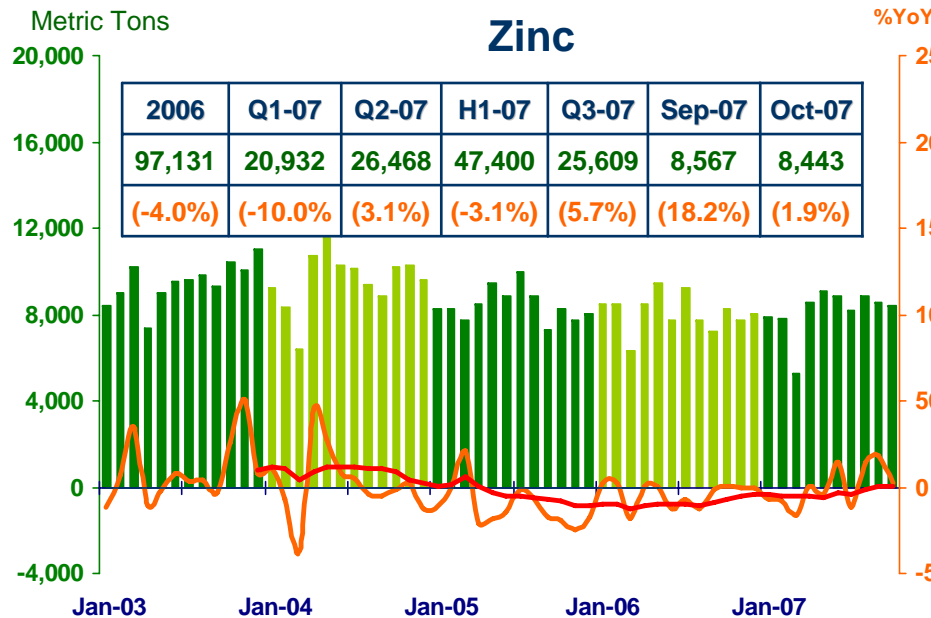
MANUFACTURING

Economic Research Division, Northern Region Office

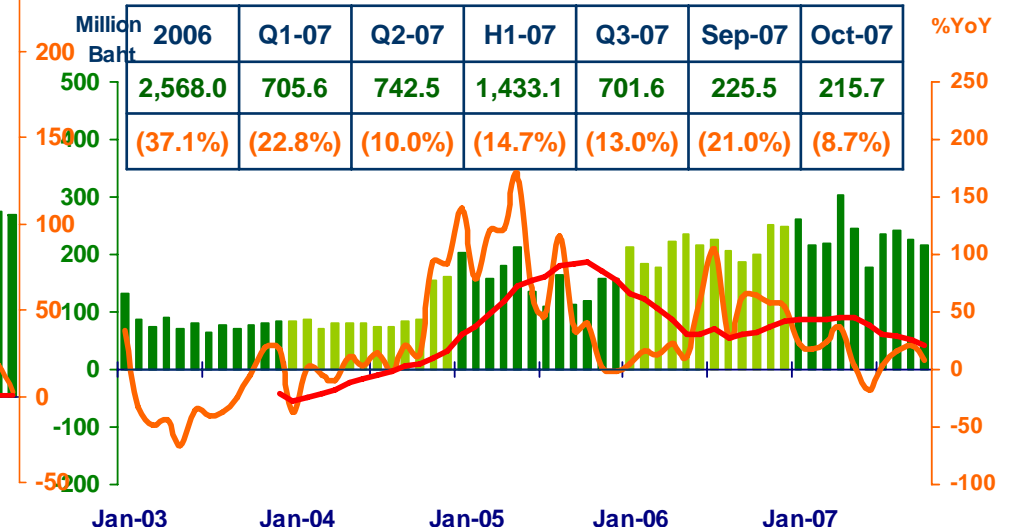
Export value by Northern Region Industrial Estate



Zinc



Vat : Manufacturing



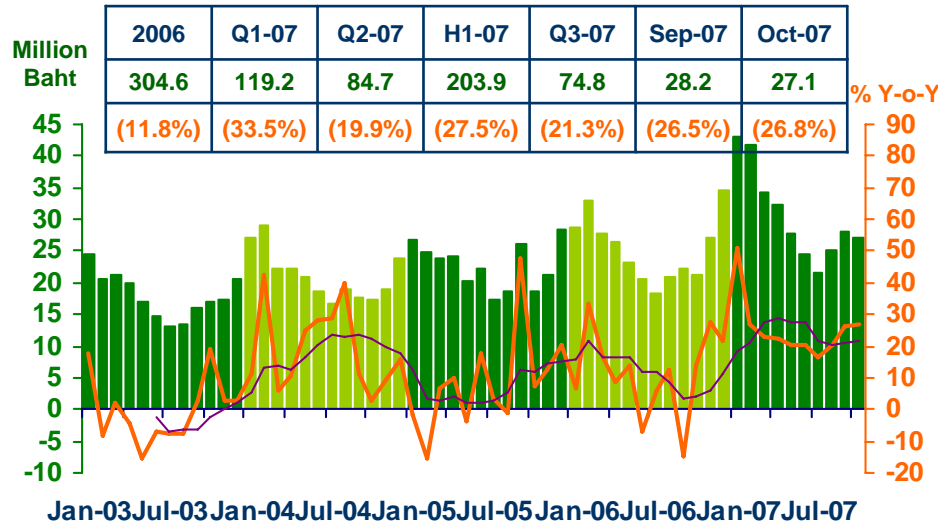
Sources: Customs Department; Pa-Dang Industry Co., Ltd.; and Ministry of Finance



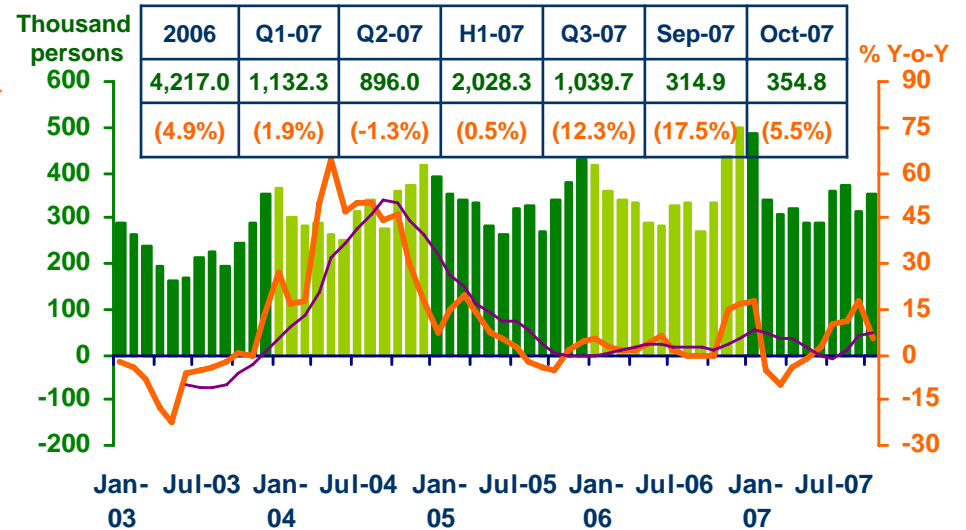
SERVICES

Economic Research Division, Northern Region Office

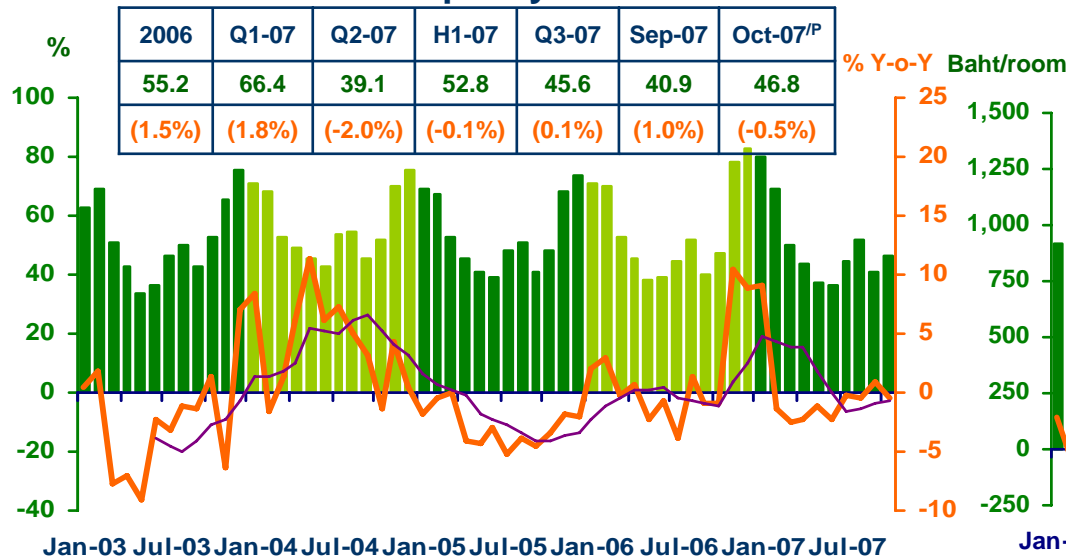
Hotel and restaurant VAT



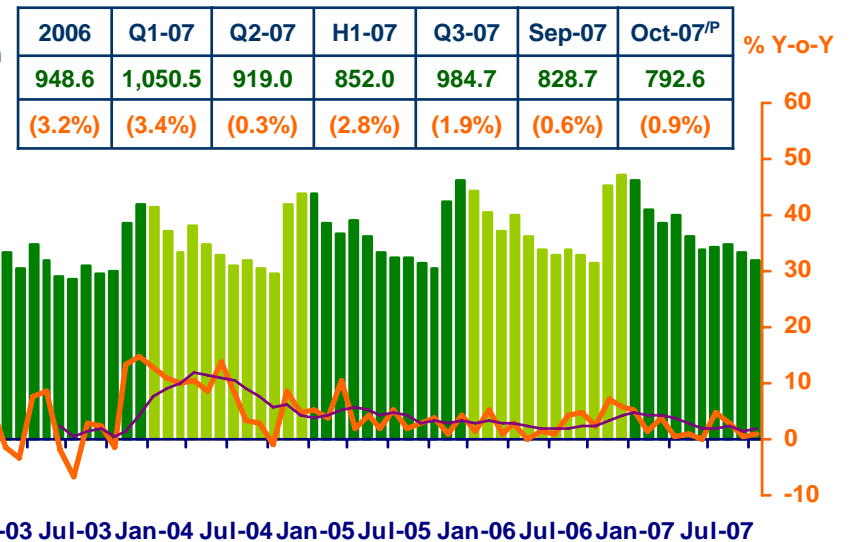
Air passengers



Hotel occupancy rate



Hotel room rate



Sources: Ministry of Finance; Airports of Thailand Public Company Limited.; and Data Management Group, Bank of Thailand

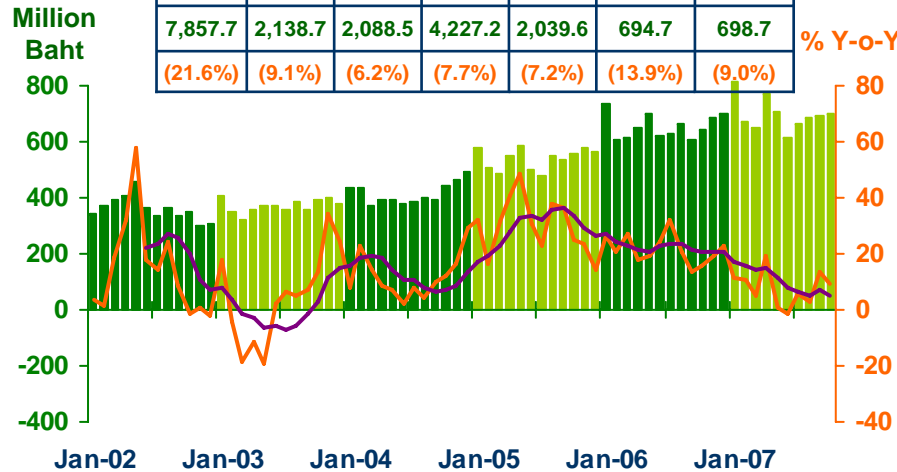


PRIVATE CONSUMPTION

Economic Research Division, Northern Region Office

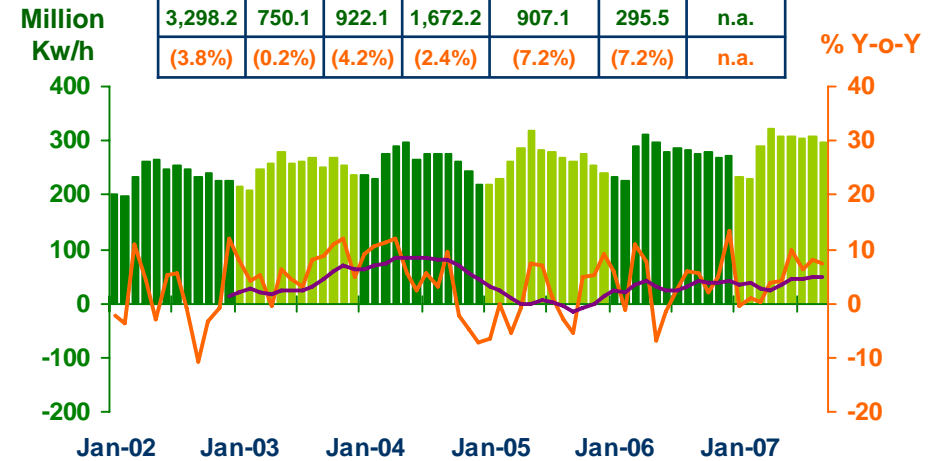
VAT

2006	Q1-07	Q2-07	H1-07	Q3-07	Sep-07	Oct-07p
7,857.7	2,138.7	2,088.5	4,227.2	2,039.6	694.7	698.7
(21.6%)	(9.1%)	(6.2%)	(7.7%)	(7.2%)	(13.9%)	(9.0%)



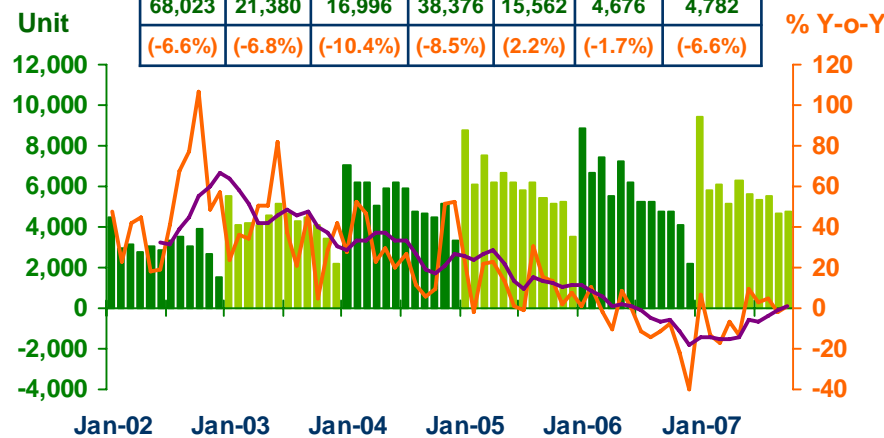
Household electricity consumption

2006	Q1-07	Q2-07	H1-07	Q3-07	Sep-07	Oct-07p
3,298.2	750.1	922.1	1,672.2	907.1	295.5	n.a.
(3.8%)	(0.2%)	(4.2%)	(2.4%)	(7.2%)	(7.2%)	n.a.



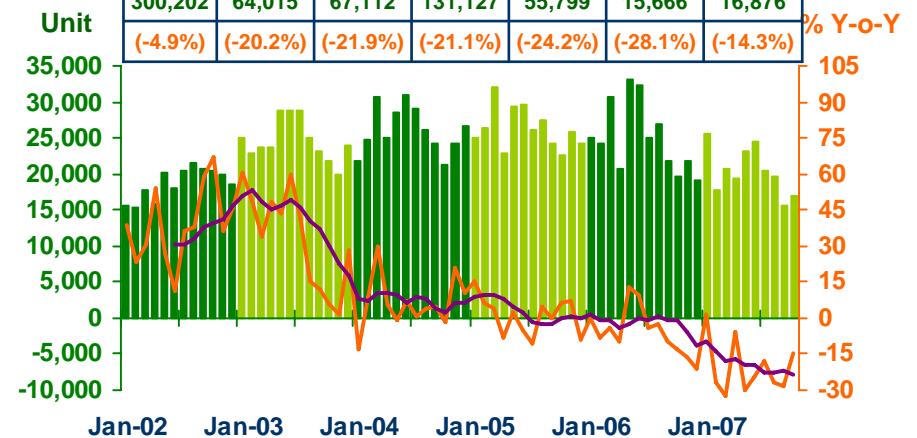
Registered passenger car and registered commercial car

2006	Q1-07	Q2-07	H1-07	Q3-07	Sep-07	Oct-07p
68,023	21,380	16,996	38,376	15,562	4,676	4,782
(-6.6%)	(-6.8%)	(-10.4%)	(-8.5%)	(2.2%)	(-1.7%)	(-6.6%)



Registered motorcycle

2006	Q1-07	Q2-07	H1-07	Q3-07	Sep-07	Oct-07p
300,202	64,015	67,112	131,127	55,799	15,666	16,876
(-4.9%)	(-20.2%)	(-21.9%)	(-21.1%)	(-24.2%)	(-28.1%)	(-14.3%)



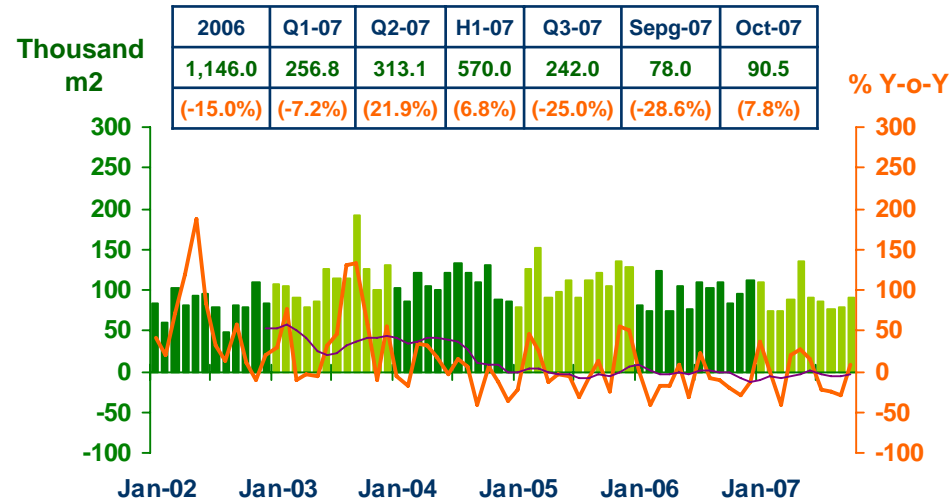
Sources: Ministry of Finance, Provincial Electricity Authority, and Provincial Land Transportation Offices



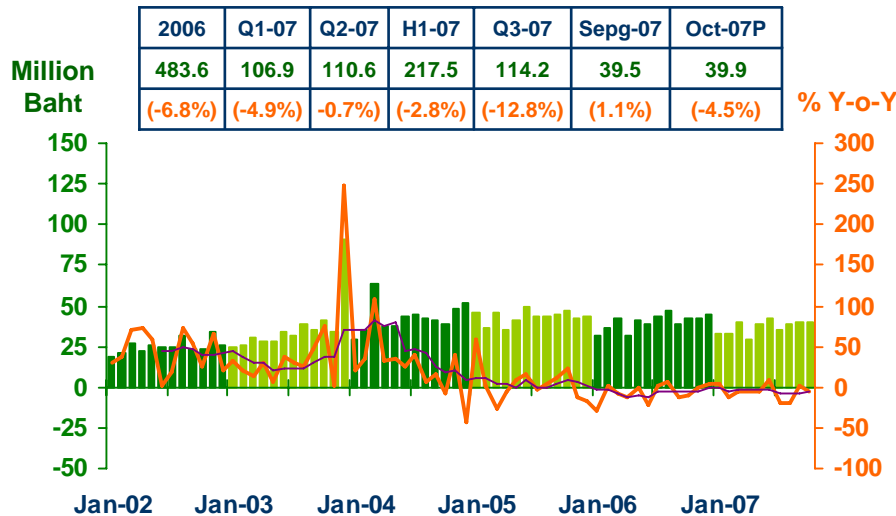
PRIVATE INVESTMENT

Economic Research Division, Northern Region Office

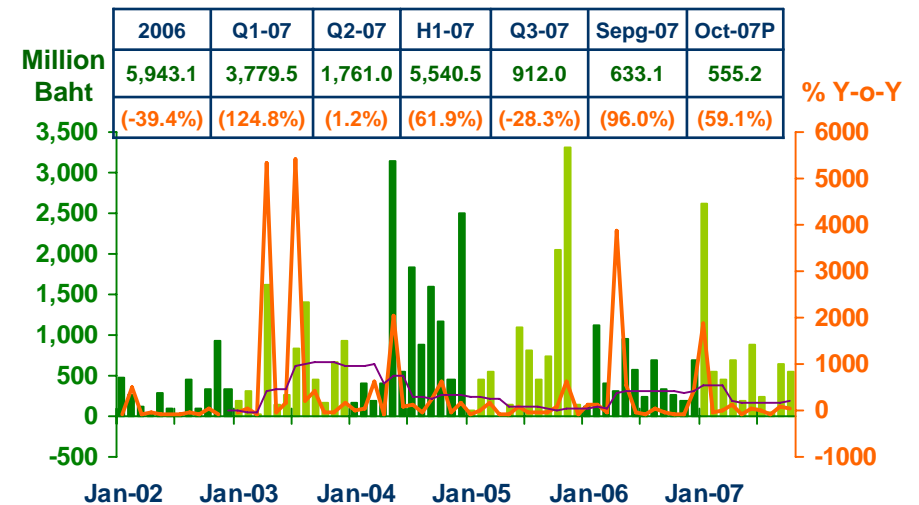
Construction Areas Permitted in Municipal Zone



Land Transaction Fee



Investment Value of Projects Approved by BOI



Sources: Municipality Offices, Provincial Land Offices, and Northern Region Investment and Economic Center (BOI)

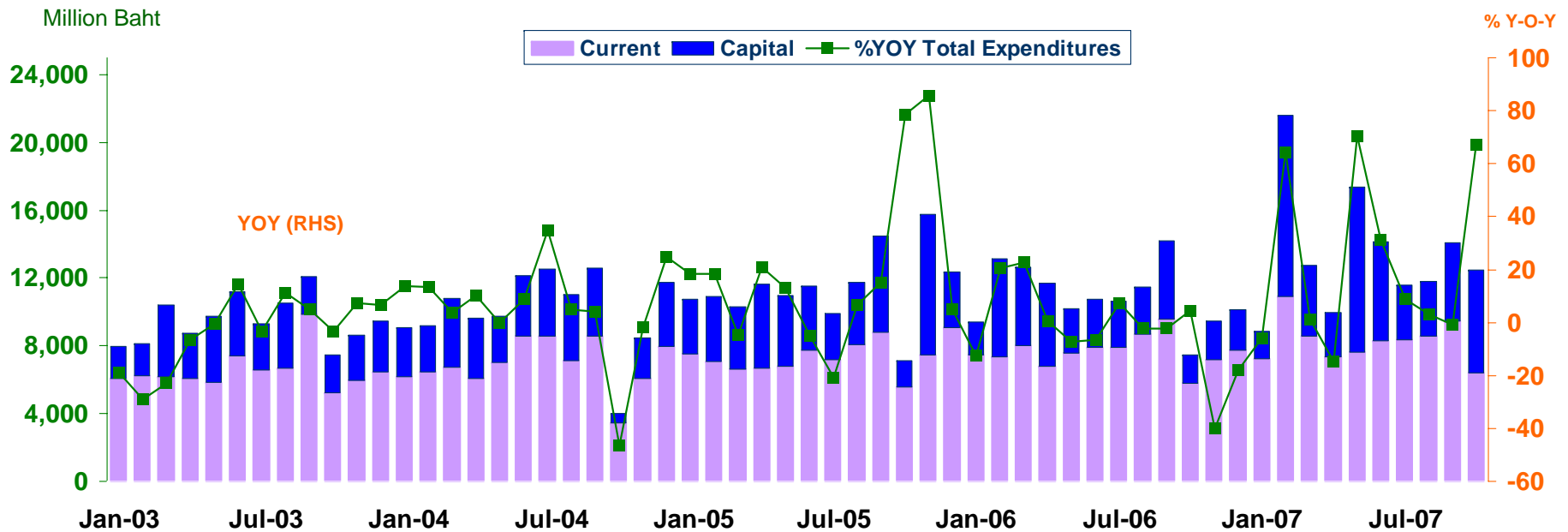


GOVERNMENT SPENDING

Economic Research Division, Northern Region Office

Expenditures

Expenditures	2006	2007					
		Q1-07	Q2-07	H1-07	Q3-07	Sep-07	Oct-07p
Current	91,977.0	26,675.7	23,289.4	49,965.1	26,390.1	9,480.7	6,423.5
	(3.8)	(16.8)	(4.7)	(10.9)	(0.8)	(-1.2)	(10.8)
Capital	39,231.8	16,549.0	18,199.0	34,748.0	11,100.1	4,614.5	6,058.9
	(-19.8)	(34.2)	(74.4)	(52.6)	(9.7)	(0.5)	(262.0)
Total	131,208.8	43,224.7	41,488.4	84,713.1	37,490.2	14,095.2	12,482.4
	(-4.6)	(22.9)	(27.0)	(24.9)	(3.3)	(-0.7)	(67.1)



Source: Ministry of Finance

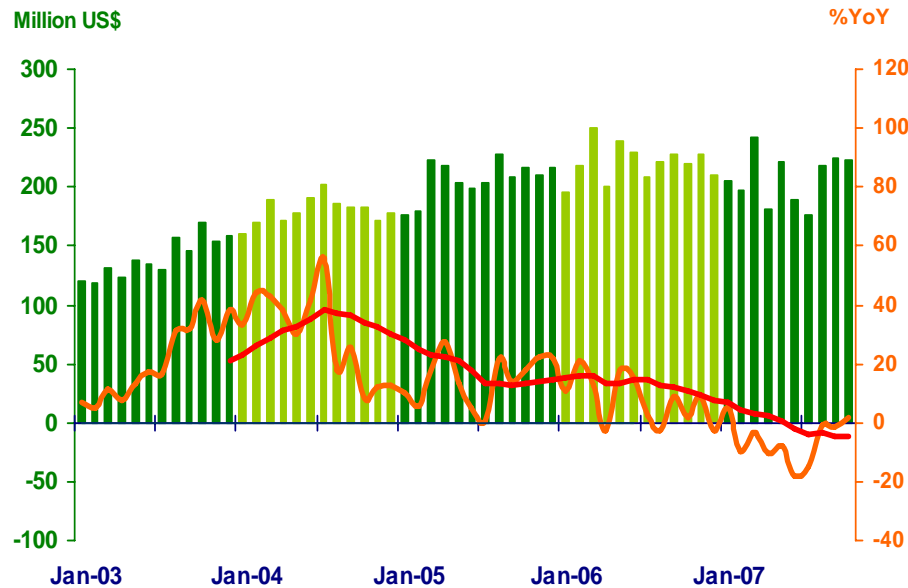


FOREIGN TRADE

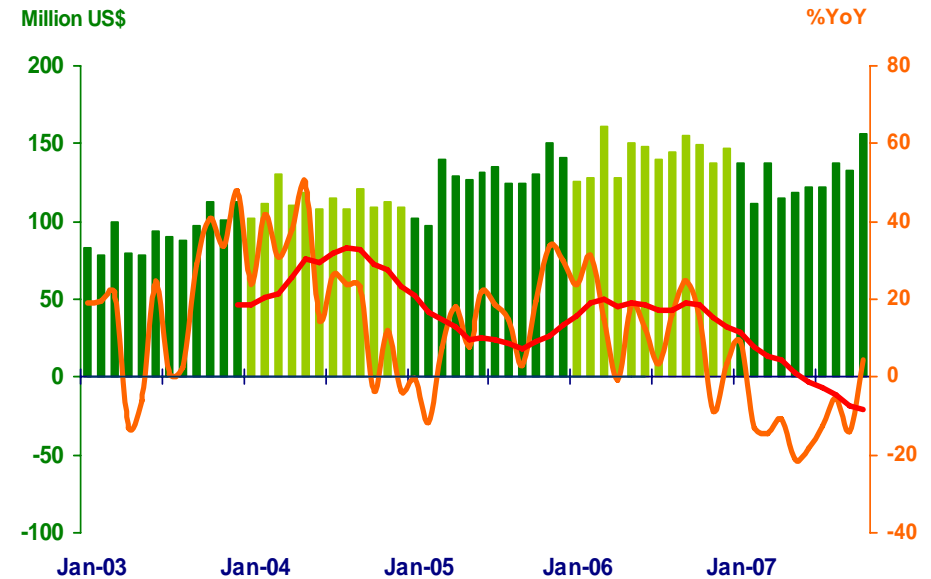
Economic Research Division, Northern Region Office

	2006	2007					
		Q1	Q2	H1	Q3	Sep	Oct
EXPORTS	2,645.6	645.3	590.0	1,253.3	620.5	225.1	222.6
	(7.2%)	(-2.8%)	(-11.9%)	(-7.4%)	(-5.5%)	(-1.2%)	(1.6%)
IMPORTS	1,715.9	386.3	354.6	740.9	392.8	133.2	156.6
	(11.8%)	(-7.0%)	(-17.0%)	(-12.1%)	(-10.7%)	(-13.9%)	(4.6%)
Trade Balance	932.7	259.0	235.4	494.4	227.7	91.9	66.0

Exports



Imports

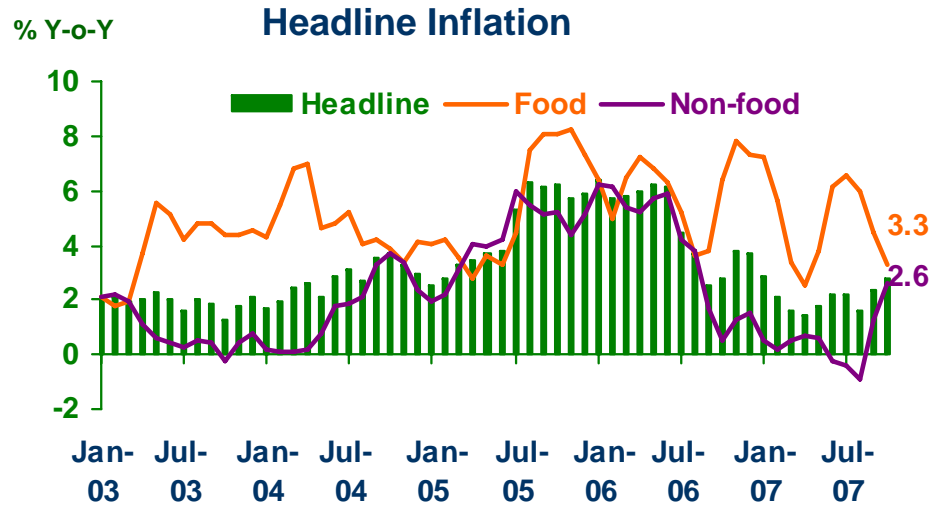


Source: Customs Department



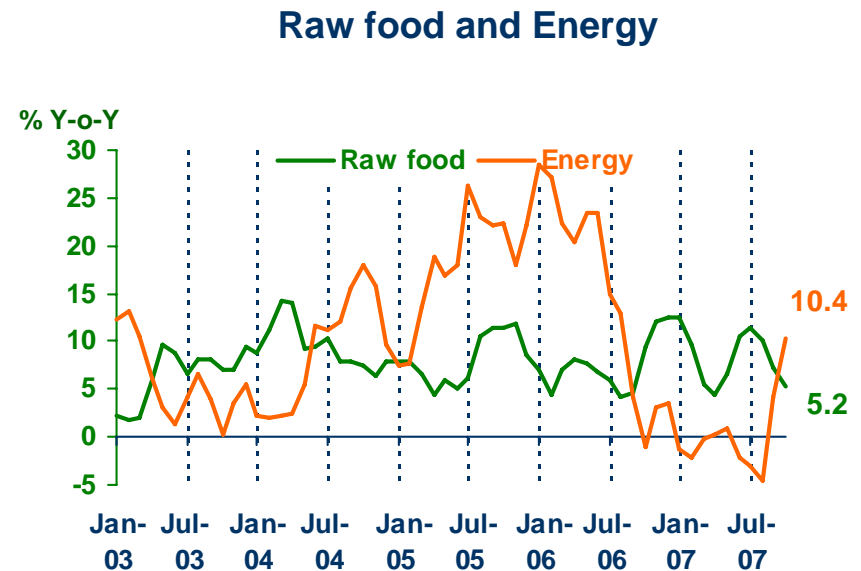
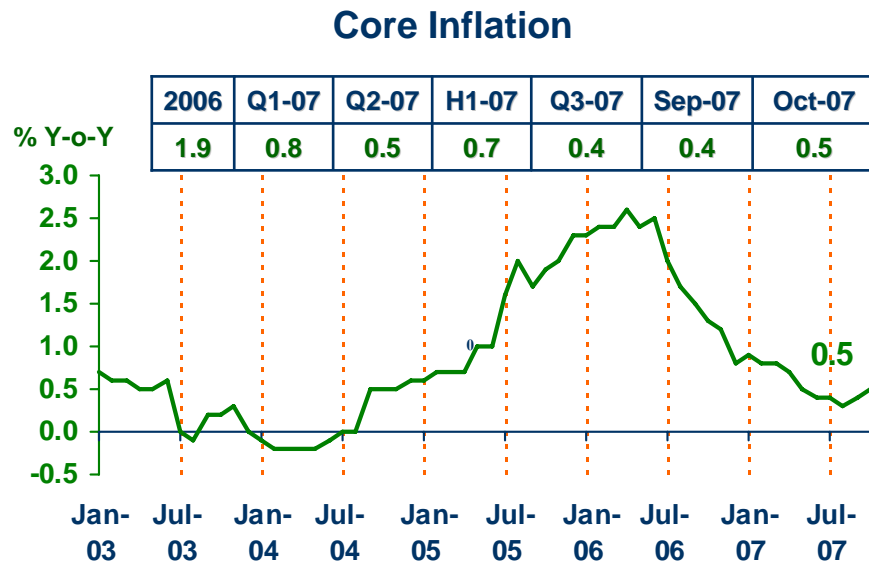
PRICE LEVEL

Economic Research Division, Northern Region Office



Headline inflation (2002 = 100)

%Y-o-Y	2006	Q1-07	Q2-07	H1-07	Q3-07	Sep-07	Oct-07
Headline	4.7	2.2	1.8	2.0	2.1	2.4	2.8
Food	6.0	5.4	4.1	4.7	5.7	4.5	3.3
Non-food	3.9	0.4	0.4	0.4	0.0	1.3	2.6



Source: Bureau of Trade and Economic Indices, Ministry of Commerce

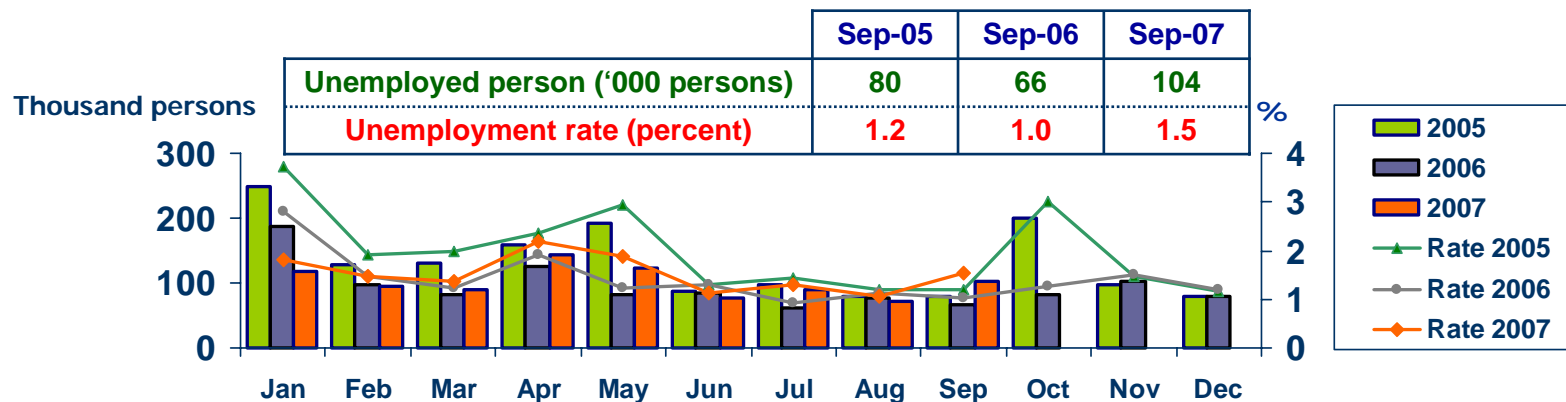


LABOR FORCE SURVEY

Economic Research Division, Northern Region Office

	% of Total Labor Force (as of Sep 2007)	2006 ($\Delta\%$)	Q1-07 ($\Delta\%$)	Q2-07 ($\Delta\%$)	Aug-07 ($\Delta\%$)	Sep-07 ($\Delta\%$)
Labor Force (1,000 Persons)	100.0	6,741	6,534	6,756	6,825	6,732
Employed persons	98.3	0.3	0.6	3.5	0.7	3.0
• Agriculture	48.6	4.5	-0.8	0.2	0.1	3.8
• Non-agriculture	49.7	-4.4	1.9	7.1	1.3	2.3
- Wholesale & retail trade	13.5	1.7	8.7	3.5	1.0	-7.1
- Manufacturing	10.5	-3.5	-6.0	14.2	-7.5	17.1
- Construction	6.5	-18.7	-16.4	13.5	-6.7	-5.3
- Hotel & restaurants Services	5.2	-15.1	20.4	-3.7	25.0	-10.2
- Others	14.0	-0.6	8.3	6.7	3.2	12.8
Unemployed persons	1.5	1.2	10.0	-10.2	-4.0	57.0
Seasonally inactive persons	0.2	236.1	-49.5	93.9	59.9	-28.1

Unemployment

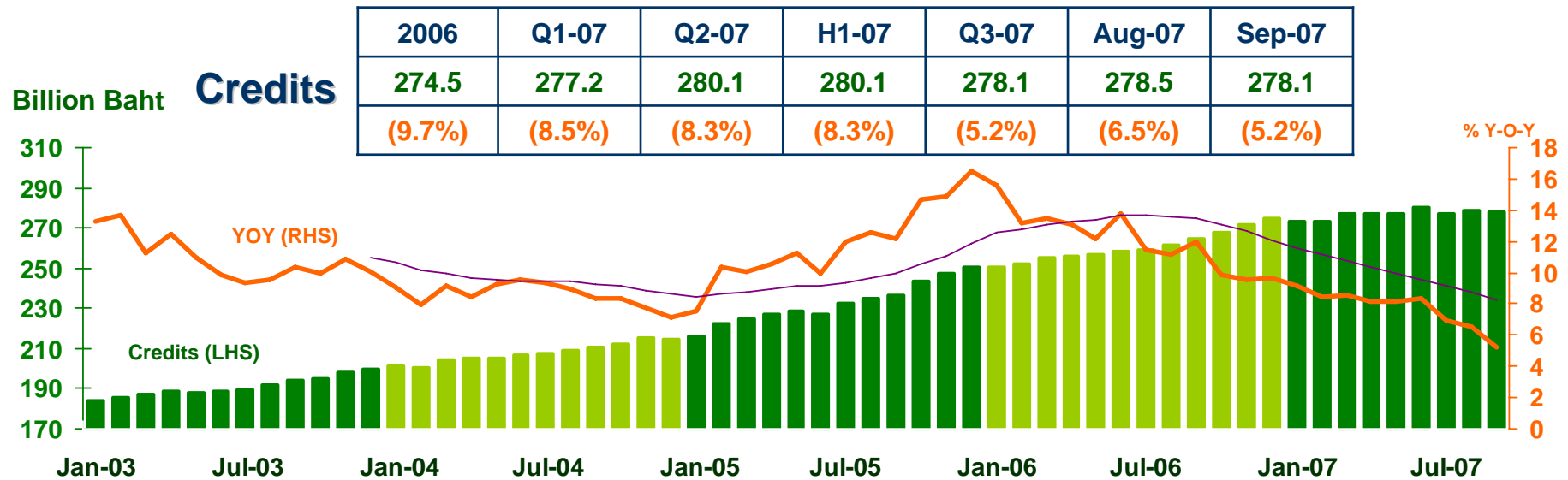
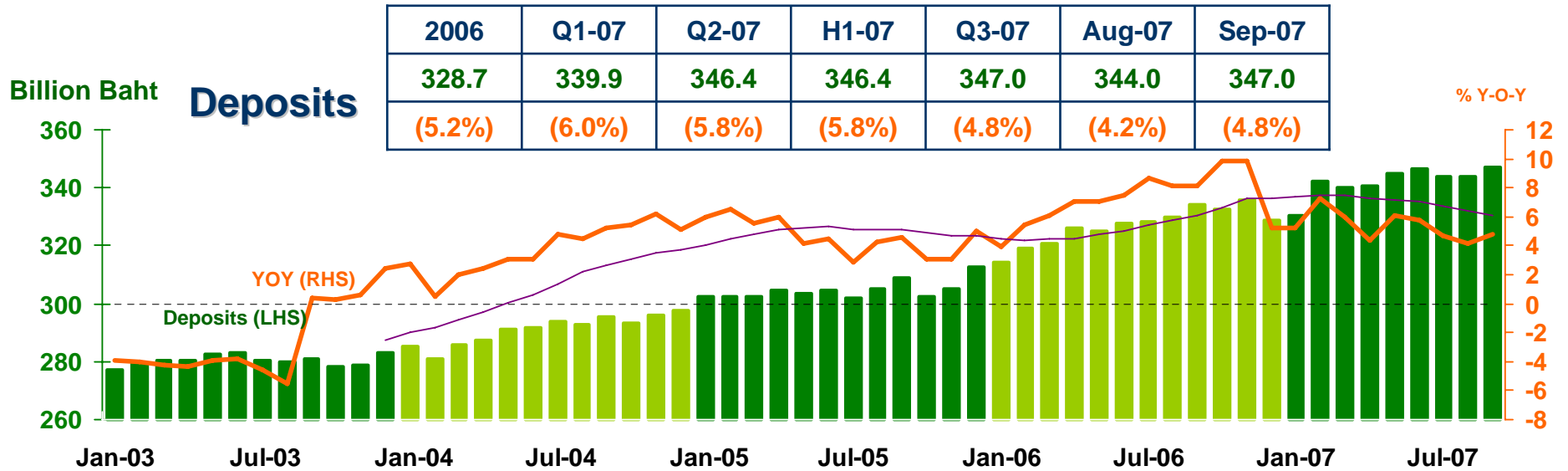


Source: National Statistical Office



DEPOSITS AND CREDITS OF COMMERCIAL BANKS

Economic Research Division, Northern Region Office



Source: Bank of Thailand