



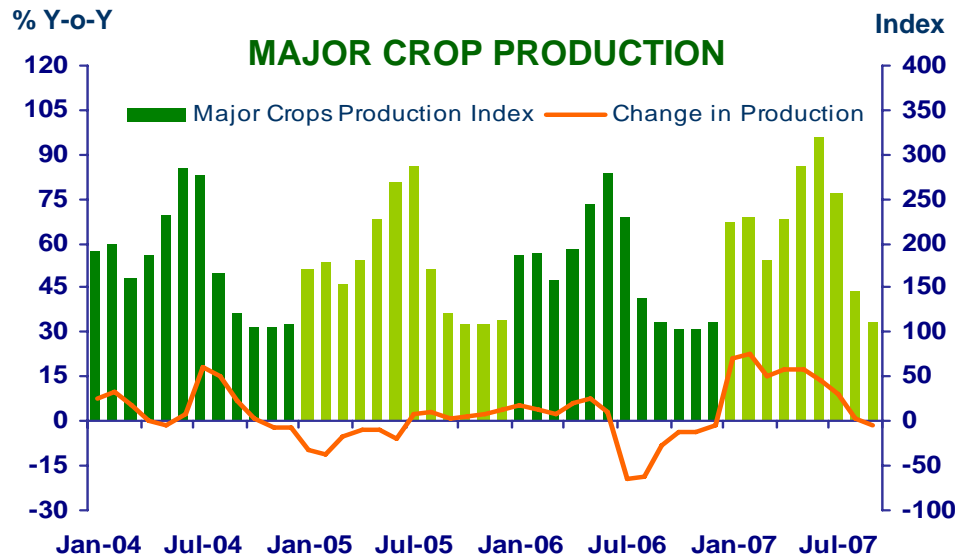
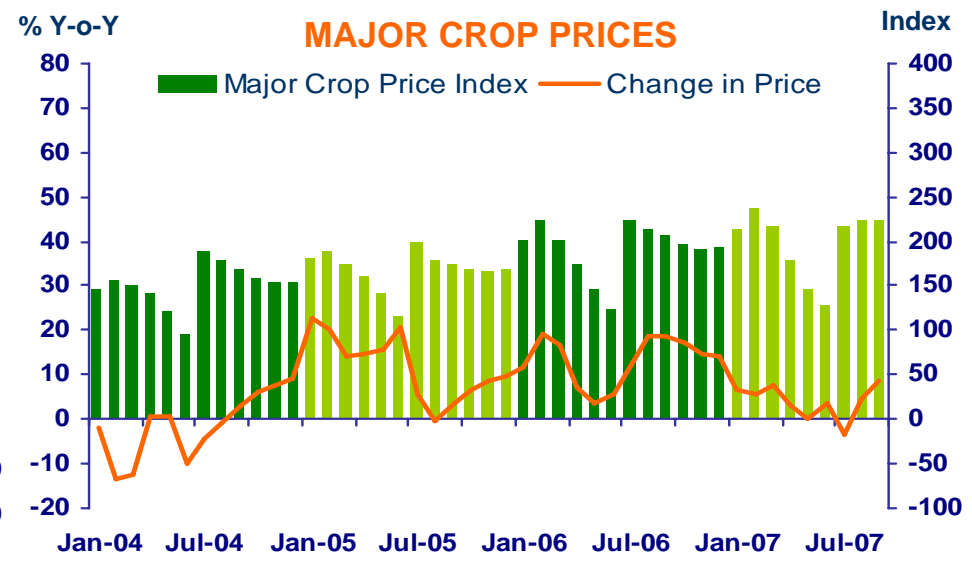
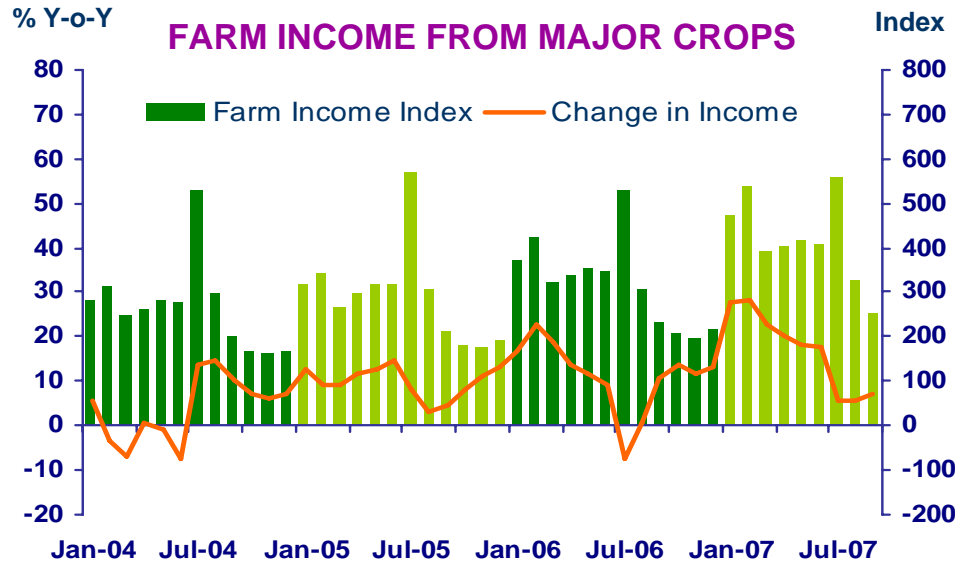
***Press Release on
Northern Region Economic Conditions in
September 2007 and in Nine Months of 2007***

Bank of Thailand, Northern Region Office



FARM INCOME FROM MAJOR CROPS

Economic Research Division, Northern Region Office



CHANGE IN FARM INCOME FROM MAJOR CROPS, MAJOR CROP PRODUCTION AND MAJOR CROP PRICES

△ % (Y-O-Y)	2006	2007				
		H1	Q3	9M	Aug	Sep
Farm Income	12.8	23.5	6.4	18.4	5.4	7.1
Production	-1.8	17.8	0.6	12.9	0.7	-1.3
Price	14.6	5.7	5.8	5.5	4.7	8.4

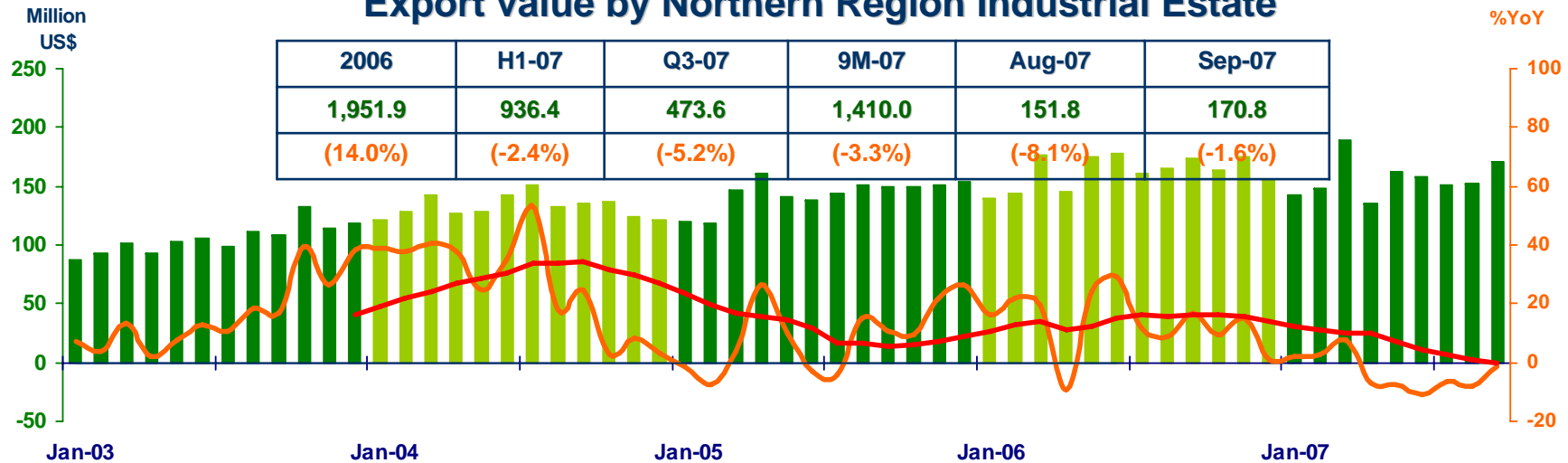
Source: Index constructed using data from Ministry of Agriculture and Co-operatives (1988 =100).



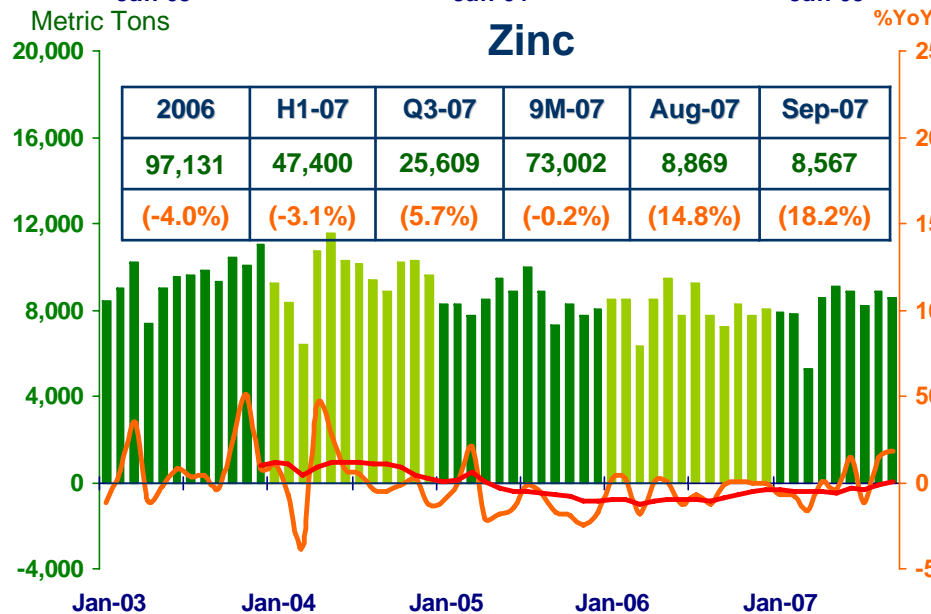
MANUFACTURING

Economic Research Division, Northern Region Office

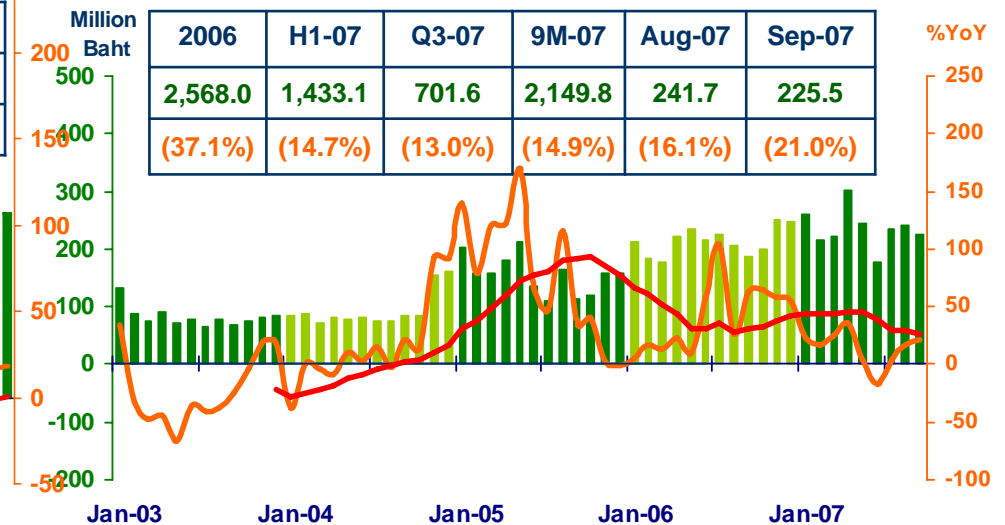
Export value by Northern Region Industrial Estate



Zinc



VAT: Manufacturing



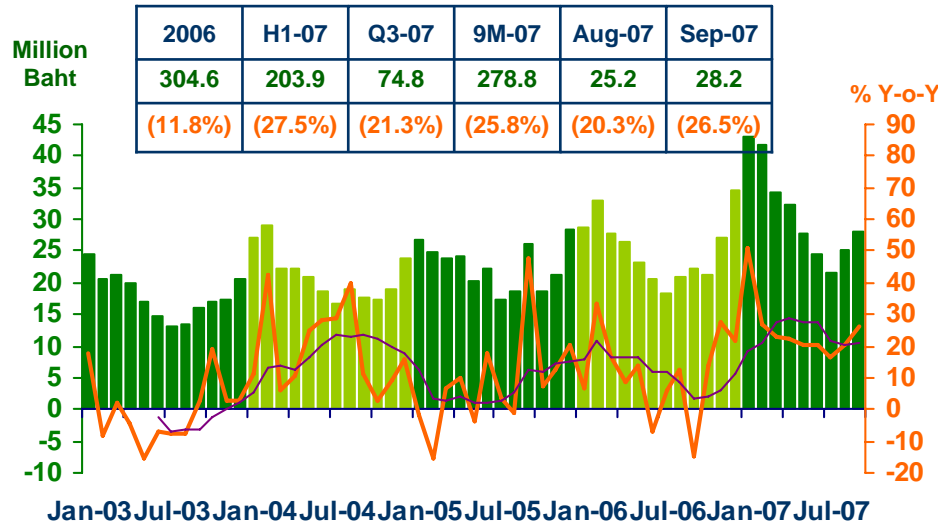
Sources: Customs Department ; Pa-Dang Industry Co., Ltd.; and Ministry of Finance



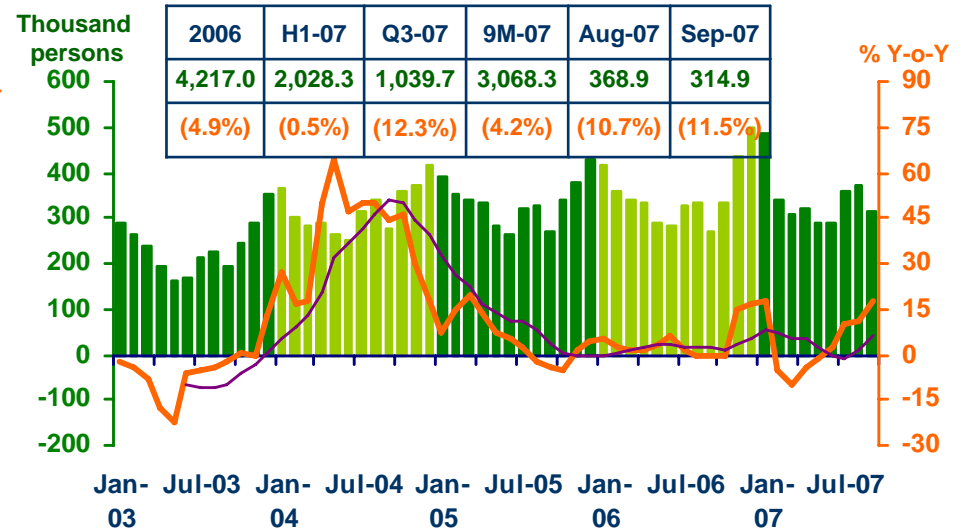
SERVICES

Economic Research Division, Northern Region Office

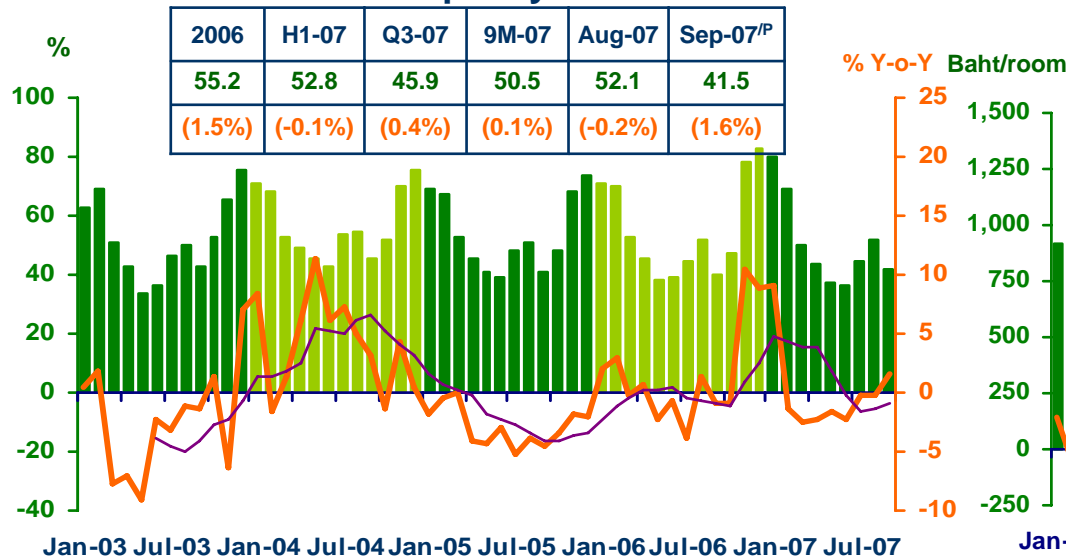
VAT: Hotels and restaurants



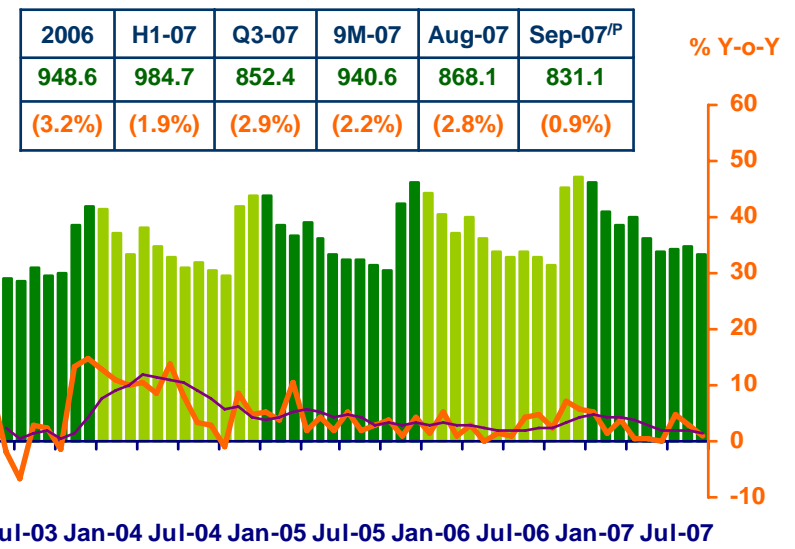
Air passengers



Hotel occupancy rate



Hotel room rate



Sources: Ministry of Finance; Airports of Thailand Plc.; and Data Management Group, Bank of Thailand

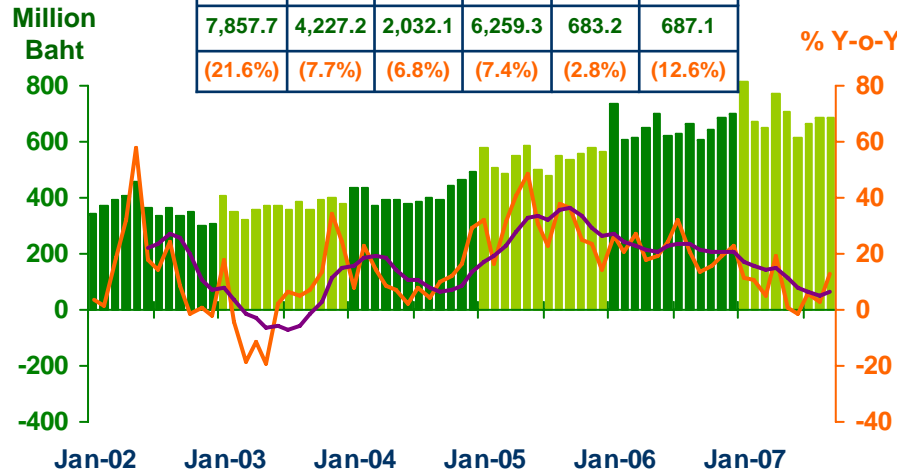


PRIVATE CONSUMPTION

Economic Research Division, Northern Region Office

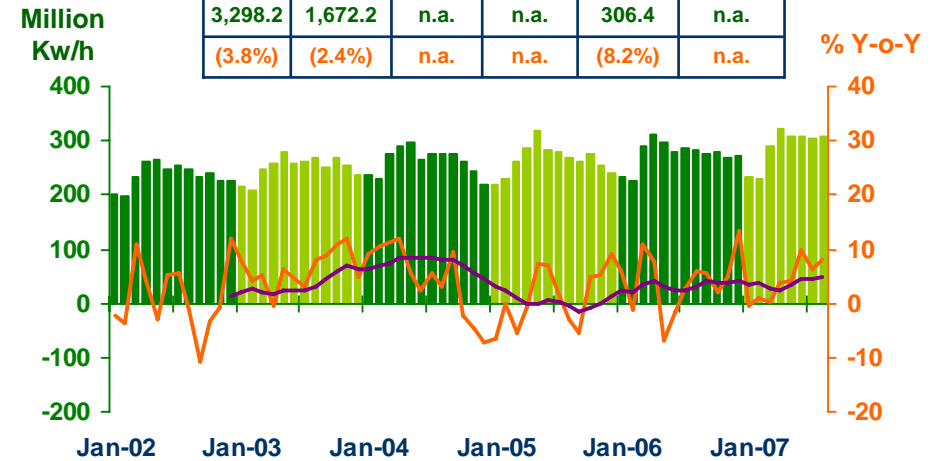
VAT

2006	H1-07	Q3-07p	9M-07p	Aug-07	Sep-07p
7,857.7	4,227.2	2,032.1	6,259.3	683.2	687.1
(21.6%)	(7.7%)	(6.8%)	(7.4%)	(2.8%)	(12.6%)



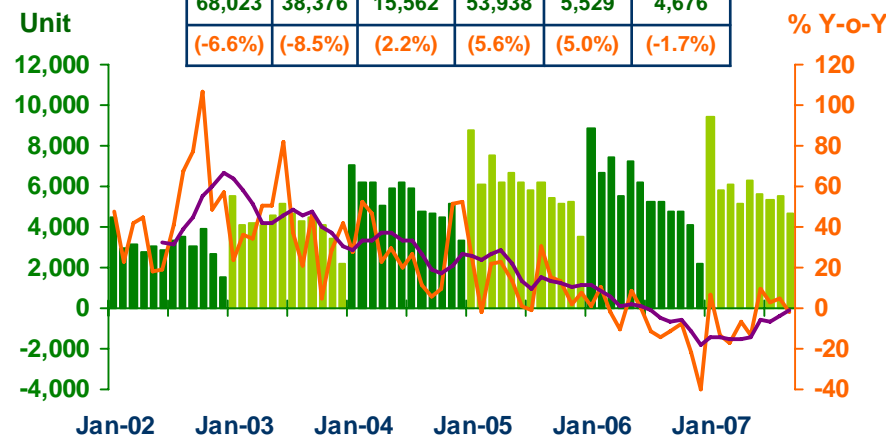
Household electricity consumption

2006	H1-07	Q3-07	9M-07	Aug-07	Sep-07p
3,298.2	1,672.2	n.a.	n.a.	306.4	n.a.
(3.8%)	(2.4%)	n.a.	n.a.	(8.2%)	n.a.



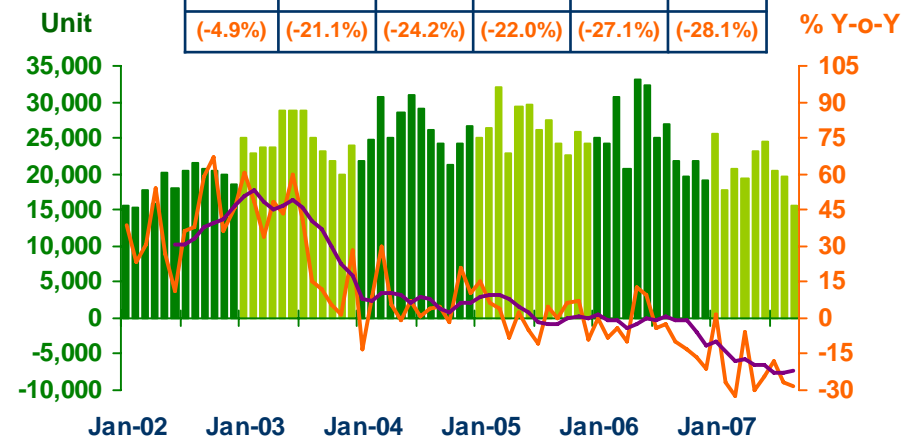
Registered passenger car and registered commercial car

2006	H1-07	Q3-07p	9M-07p	Aug-07	Sep-07p
68,023	38,376	15,562	53,938	5,529	4,676
(-6.6%)	(-8.5%)	(2.2%)	(5.6%)	(5.0%)	(-1.7%)



Registered motorcycle

2006	H1-07	Q3-07p	9M-07p	Aug-07	Sep-07p
300,202	131,127	55,799	186,926	19,576	15,666
(-4.9%)	(-21.1%)	(-24.2%)	(-22.0%)	(-27.1%)	(-28.1%)



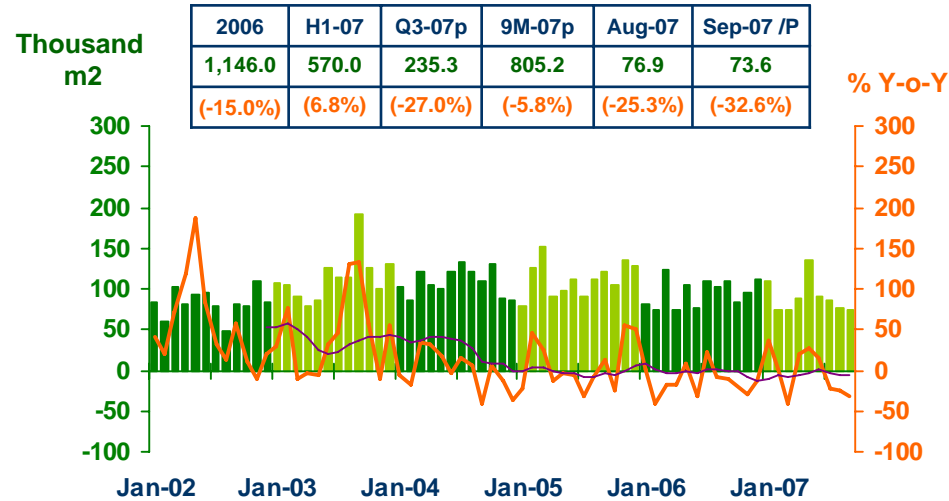
Sources: Ministry of Finance, Provincial Electricity Authority, and Provincial Land Transportation Offices



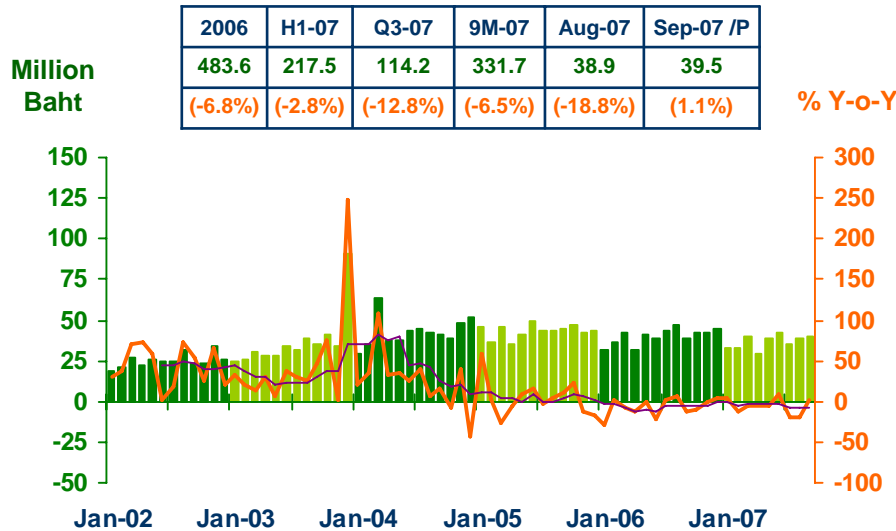
PRIVATE INVESTMENT

Economic Research Division, Northern Region Office

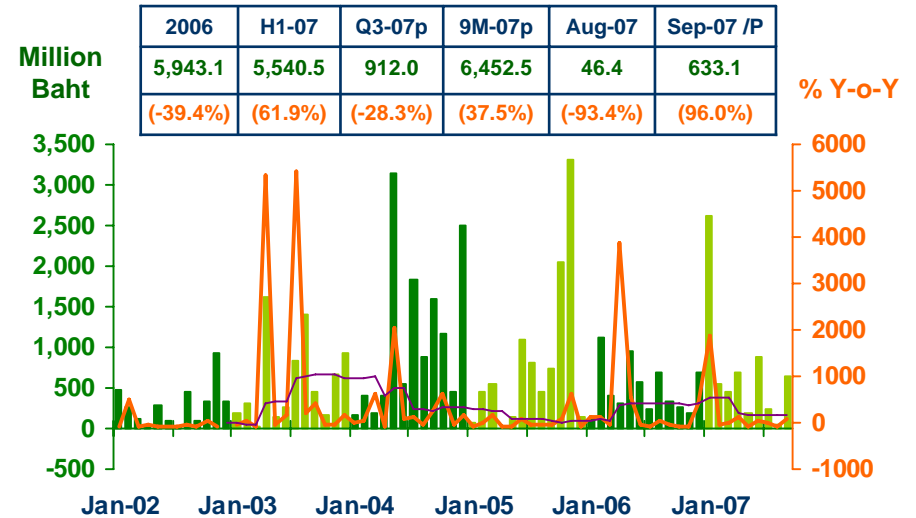
Construction Areas Permitted in Municipal Zone



Land Transaction Fee



Investment Value of Projects Approved by BOI



Sources: Municipality Offices, Provincial Land Offices, and Northern Region Investment and Economic Center (BOI)

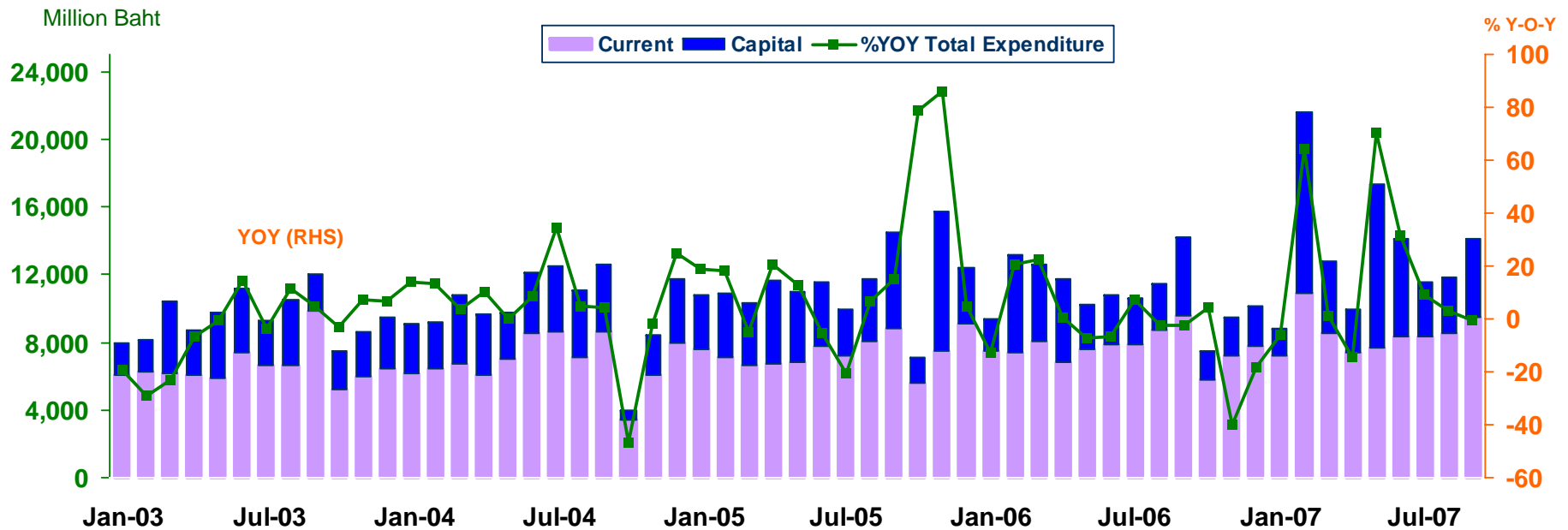


GOVERNMENT SPENDING

Economic Research Division, Northern Region Office

Expenditures

Expenditures	Fiscal year 2006	Fiscal year 2007	2007				
			H1-07	Q3-07p	9M-07p	Aug-07	Sep-07p
Current	93,358.3	97,085.4	49,965.1	26,390.1	76,355.2	8,566.6	9,480.7
	(11.3)	(4.0)	(10.9)	(0.8)	(7.2)	(-1.3)	(-1.2)
Capital	46,018.1	52,191.6	34,748.0	11,100.1	45,848.1	3,263.8	4,614.5
	(8.1)	(13.4)	(52.6)	(9.7)	(39.4)	(15.8)	(0.5)
Total	139,376.4	149,277.0	84,713.1	37,490.2	122,203.3	11,830.4	14,095.2
	(10.2)	(7.1)	(24.9)	(3.3)	(17.4)	(2.9)	(-0.7)



Source: Ministry of Finance



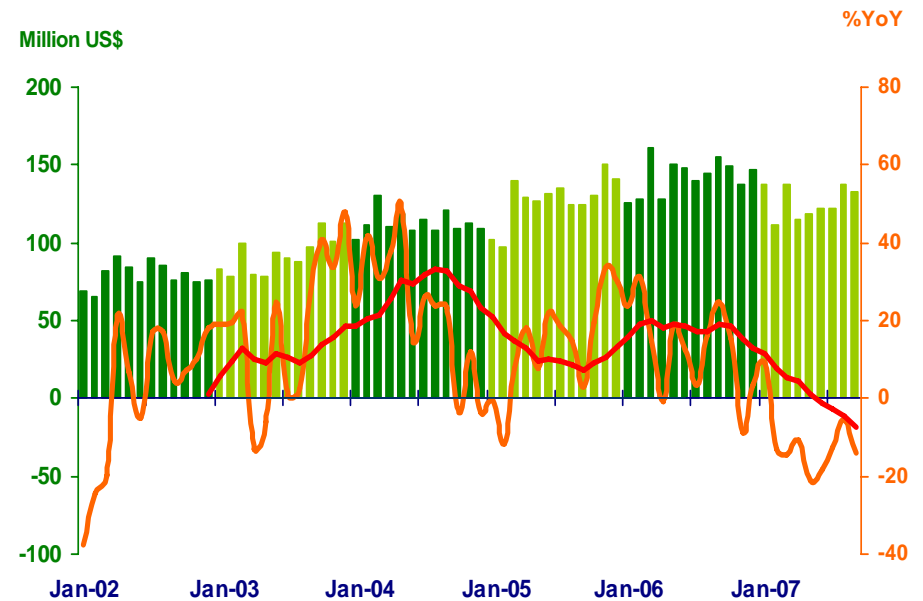
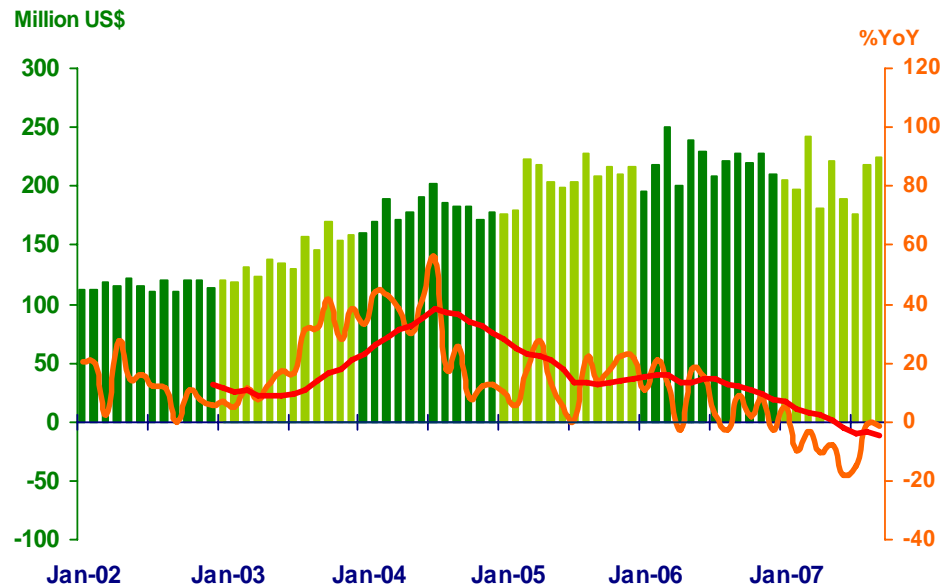
FOREIGN TRADE

Economic Research Division, Northern Region Office

	2006	2007				
		H1	Q3	9M	Aug	Sep
EXPORTS	2,645.6	1,235.3	620.5	1,855.8	218.4	225.1
	(7.2%)	(-7.4%)	(-5.5%)	(-6.8%)	(-1.1%)	(-1.2%)
IMPORTS	1,715.9	740.9	392.8	1,133.8	137.1	133.2
	(11.8%)	(-12.1%)	(-10.7%)	(-11.6%)	(-5.4%)	(-13.9%)
TRADE BALANCE	932.7	494.4	227.7	722.1	81.3	91.9

Exports

Imports



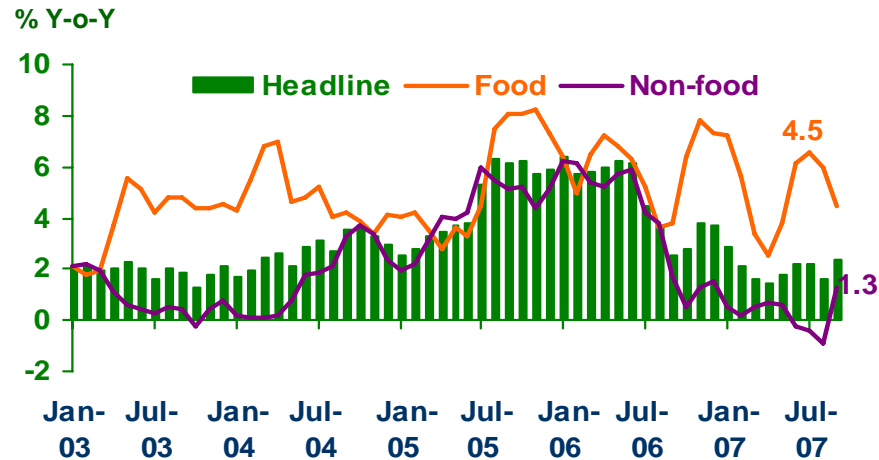
Source: Customs Department



PRICE LEVEL

Economic Research Division, Northern Region Office

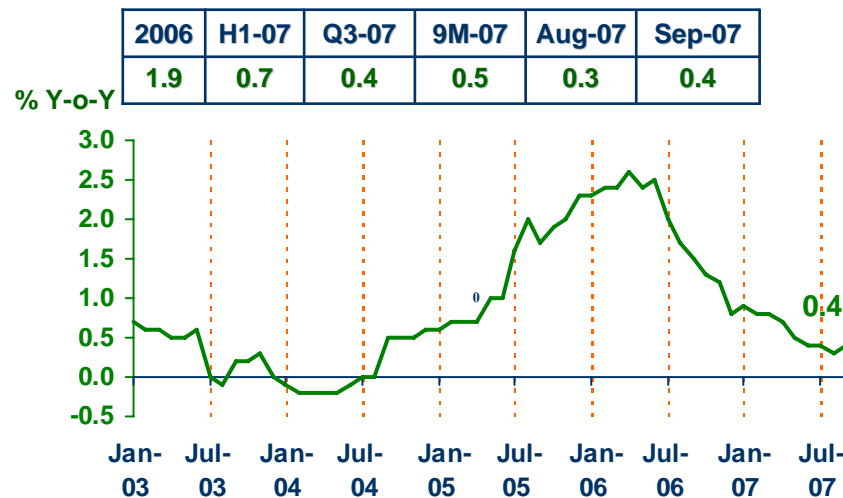
Headline Inflation



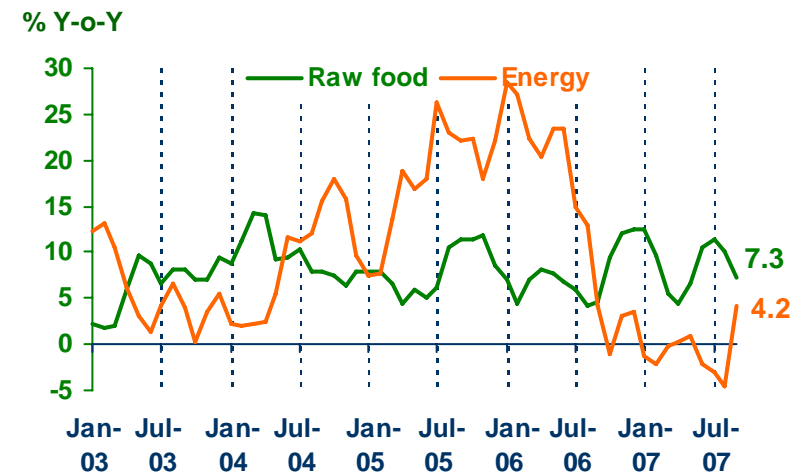
Headline inflation (2002 = 100)

%Y-o-Y	2006	H1-07	Q3-07	9M-07	Aug-07	Sep-07
Headline	4.7	2.0	2.1	1.4	1.6	2.4
Food	6.0	4.7	5.7	3.9	6.0	4.5
Non-food	3.9	0.4	0.0	0.0	-0.9	1.3

Core Inflation



Raw food and Energy



Source: Bureau of Trade and Economic Indices, Ministry of Commerce

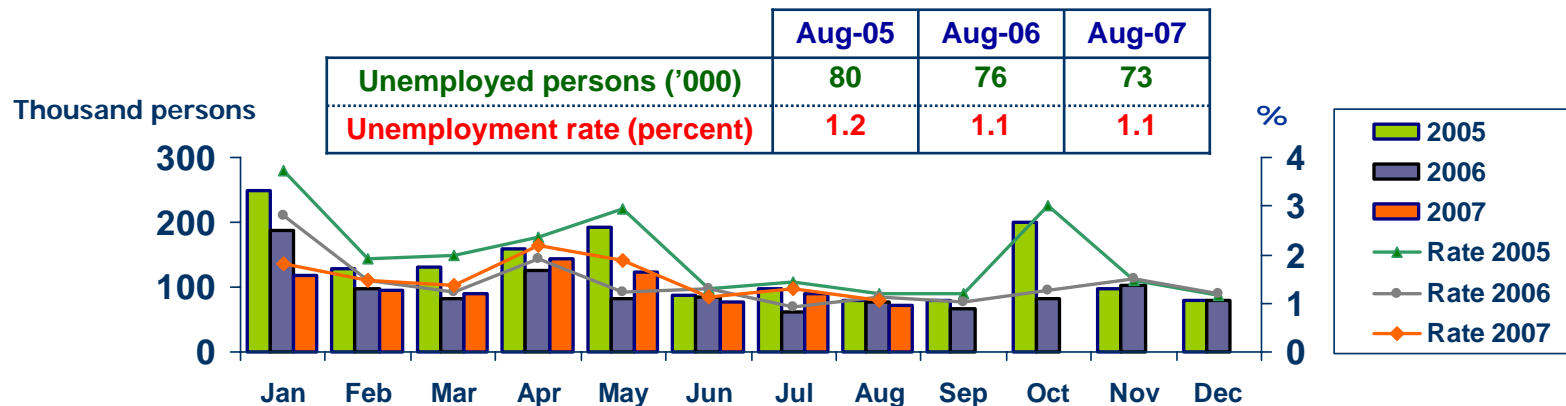


LABOR FORCE SURVEY

Economic Research Division, Northern Region Office

	% of Total Labor Force (as of Aug 2007)	2006 ($\Delta\%$)	Q1-07 ($\Delta\%$)	Q2-07 ($\Delta\%$)	Jul-07 ($\Delta\%$)	Aug-07 ($\Delta\%$)
Labor Force (1,000 Persons)	100.0	6,741	6,534	6,756	6,810	6,825
Employed persons	98.7	0.3	0.6	3.5	0.3	0.7
• Agriculture	51.0	4.5	-0.8	0.2	-4.9	0.1
• Non-agriculture	47.7	-4.4	1.9	7.1	6.6	1.3
- Wholesale & retail trade	13.6	1.7	8.7	3.5	10.9	1.0
- Manufacturing	10.5	-3.5	-6.0	14.2	-3.0	-7.5
- Construction	6.1	-18.7	-16.4	13.5	7.9	-6.7
- Hotel & restaurants Services	4.9	-15.1	20.4	-3.7	8.9	25.0
- Others	12.6	-0.6	8.3	6.7	9.4	3.2
Unemployed persons	1.3	1.2	10.0	-10.2	42.0	-4.0
Seasonally inactive persons	0.0	236.1	-49.5	93.9	-88.6	59.9

Unemployment

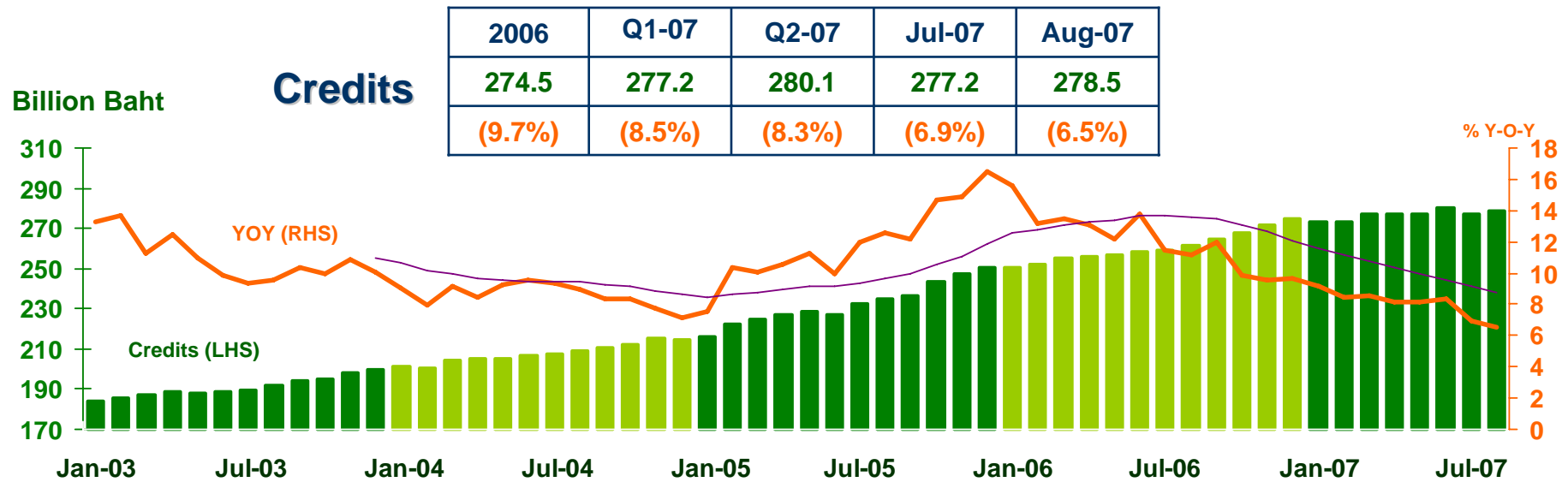
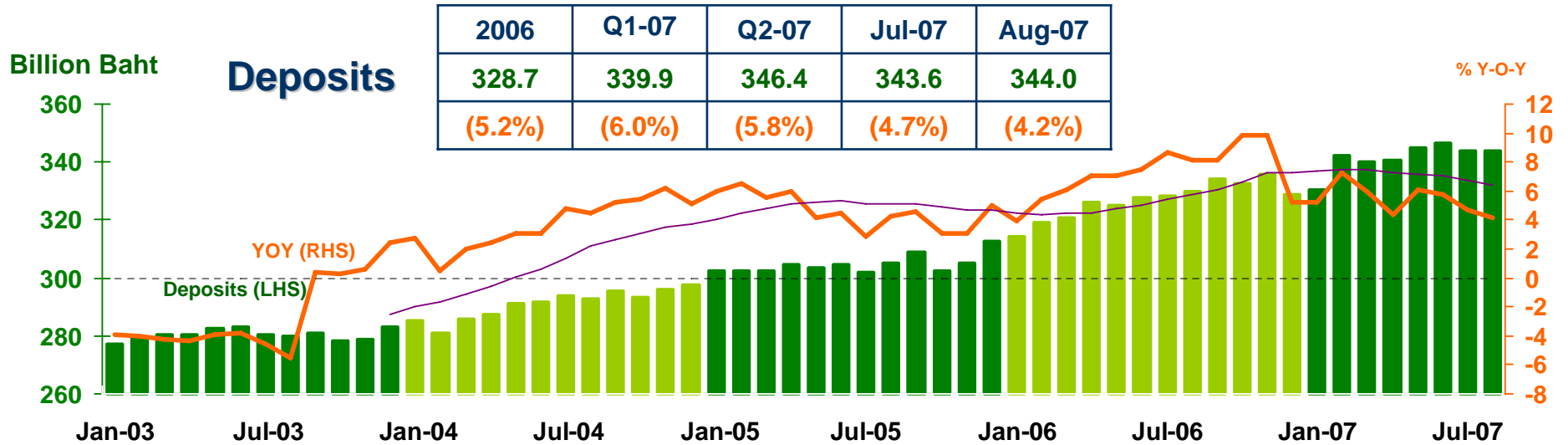


Source: National Statistical Office



DEPOSITS AND CREDITS OF COMMERCIAL BANKS

Economic Research Division, Northern Region Office



Source: Bank of Thailand