



Northern Region Economic Conditions in July 2008

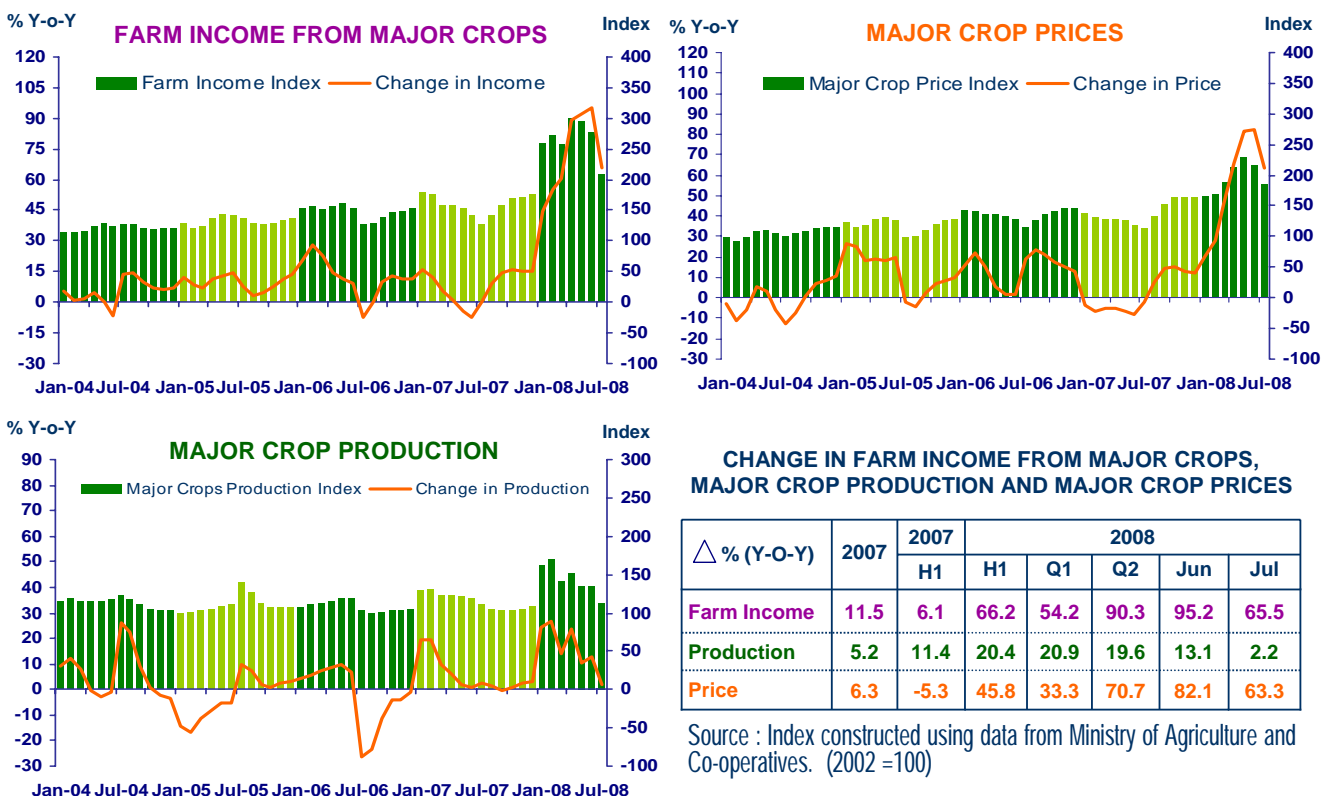
Bank of Thailand, Northern Region Office



2

FARM INCOME FROM MAJOR CROPS

Economic Research Division, Northern Region Office



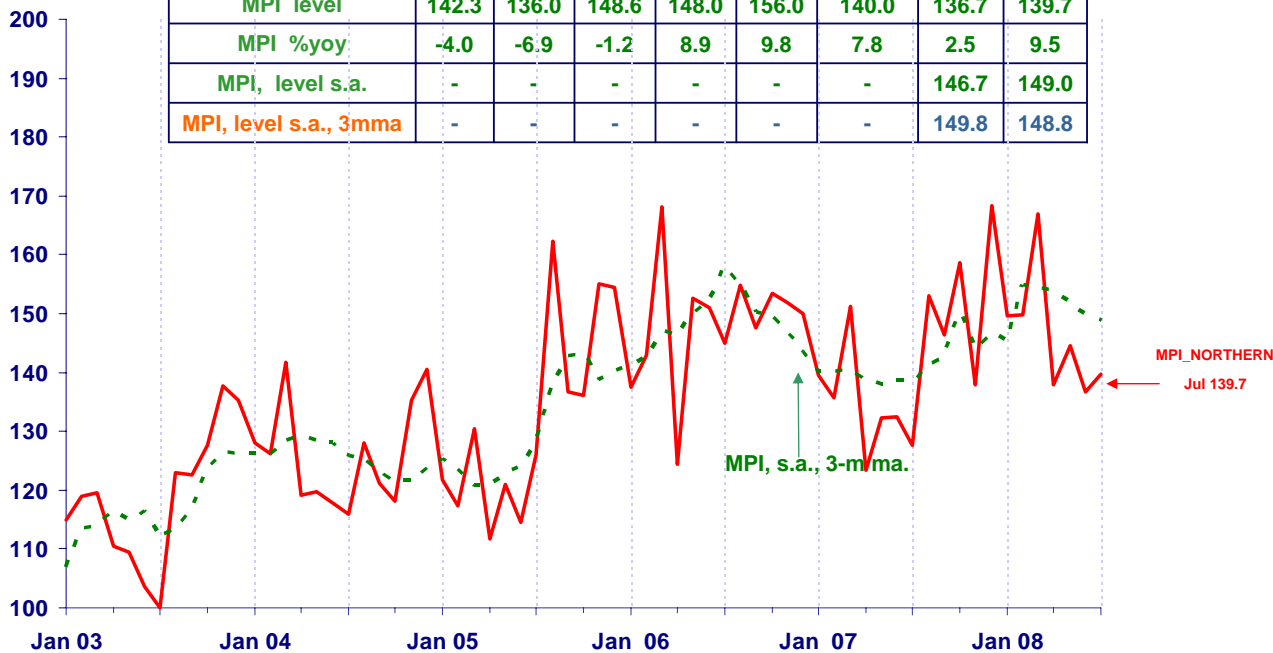


MANUFACTURING

Economic Research Division, Northern Region Office

MPI_NORTHERN

	2007	H1-07	H2-07	H1-08	Q1-08	Q2-08	Jun	Jul
MPI level	142.3	136.0	148.6	148.0	156.0	140.0	136.7	139.7
MPI %yoy	-4.0	-6.9	-1.2	8.9	9.8	7.8	2.5	9.5
MPI, level s.a.	-	-	-	-	-	-	146.7	149.0
MPI, level s.a., 3mma	-	-	-	-	-	-	149.8	148.8

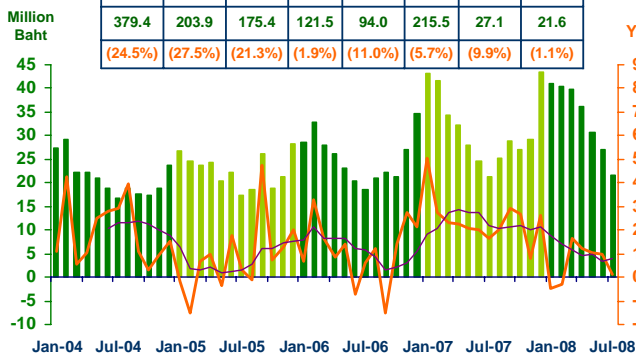


SERVICES

Economic Research Division, Northern Region Office

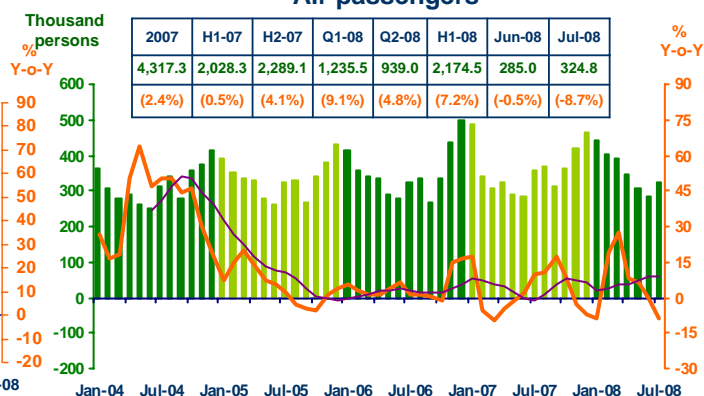
Hotel and restaurant VAT

2007	H1-07	H2-07	Q1-08	Q2-08	H1-08	Jun-08	Jul-08
379.4	203.9	175.4	121.5	94.0	215.5	27.1	21.6
(24.5%)	(27.5%)	(21.3%)	(1.9%)	(11.0%)	(5.7%)	(9.9%)	(1.1%)



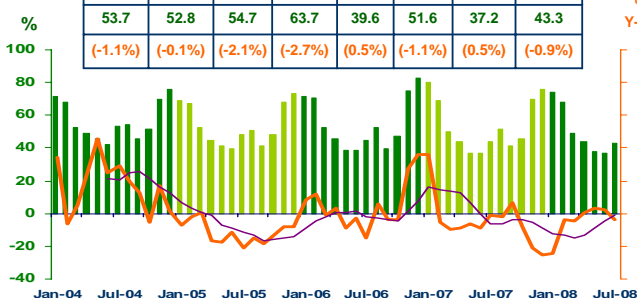
Air passengers

2007	H1-07	H2-07	Q1-08	Q2-08	H1-08	Jun-08	Jul-08
4,317.3	2,028.3	2,289.1	1,235.5	939.0	2,174.5	285.0	324.8
(2.4%)	(0.5%)	(4.1%)	(9.1%)	(4.8%)	(7.2%)	(-0.5%)	(-8.7%)



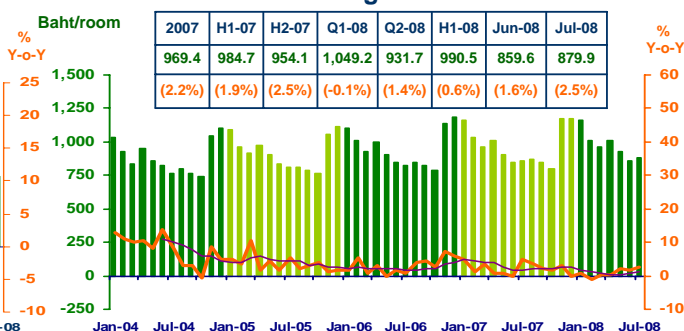
Hotel occupancy rate

2007	H1-07	H2-07	Q1-08	Q2-08	H1-08	Jun-08	Jul-08
53.7	52.8	54.7	63.7	39.6	51.6	37.2	43.3
(-1.1%)	(-0.1%)	(-2.1%)	(-2.7%)	(0.5%)	(-1.1%)	(0.5%)	(-0.9%)



Hotel average room rate

2007	H1-07	H2-07	Q1-08	Q2-08	H1-08	Jun-08	Jul-08
969.4	984.7	954.1	1,049.2	931.7	990.5	859.6	879.9
(2.2%)	(1.9%)	(2.5%)	(-0.1%)	(1.4%)	(0.6%)	(1.6%)	(2.5%)



Sources: Ministry of Finance; Airports of Thailand Public Company Limited.; and Data Management Group, Bank of Thailand

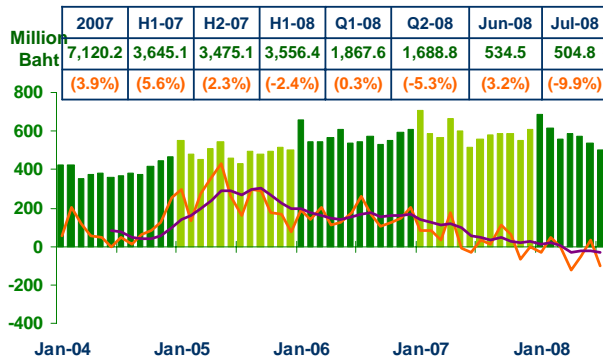


Private Consumption

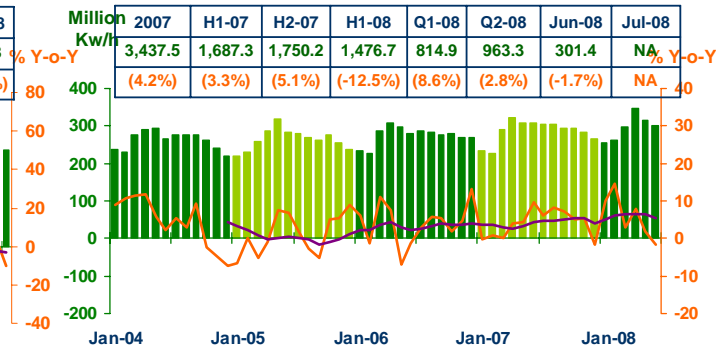
5

Economic Research Division, Northern Region Office

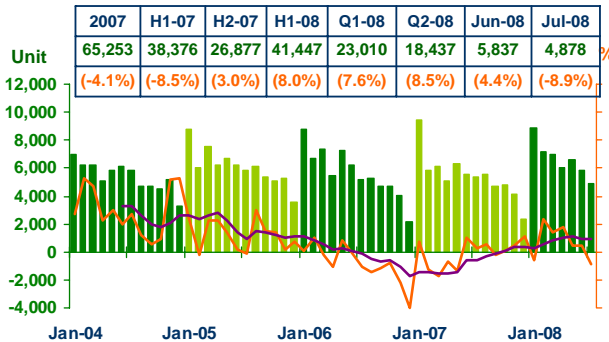
VAT (Real Term)



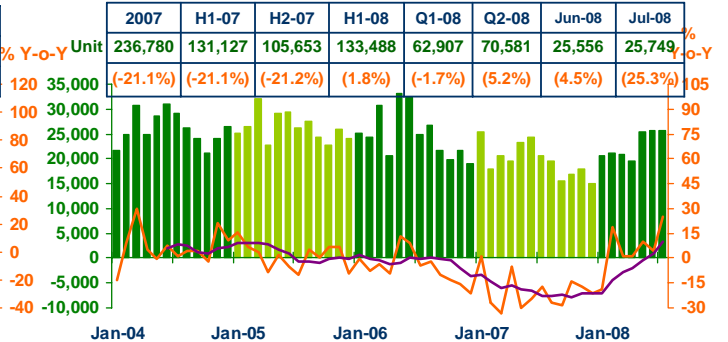
Household electricity consumption



Registered passenger car and registered commercial car



Registered motorcycle



Sources: Ministry of Finance, Provincial Electricity Authority, Provincial Land Transportation Offices

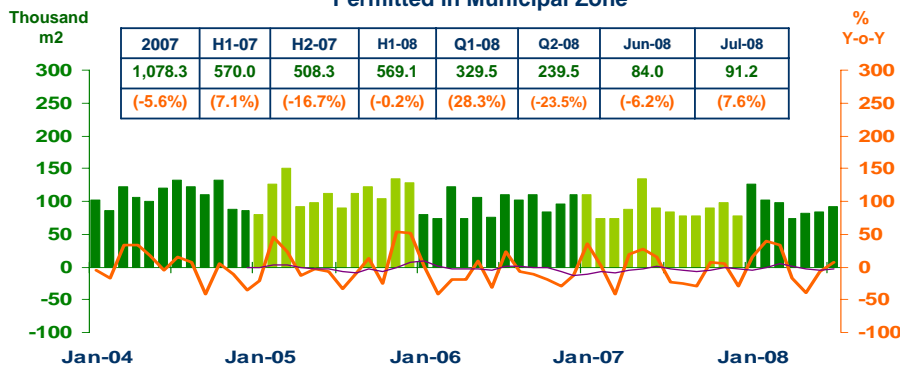


Private Investment

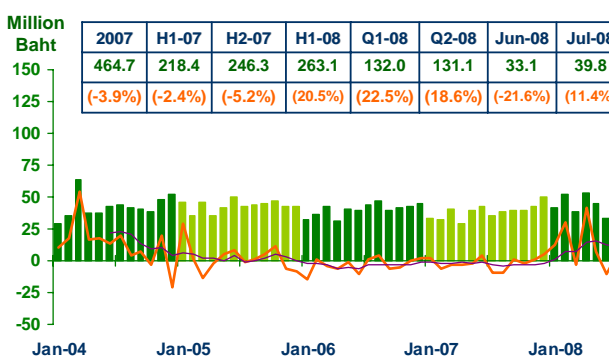
6

Economic Research Division, Northern Region Office

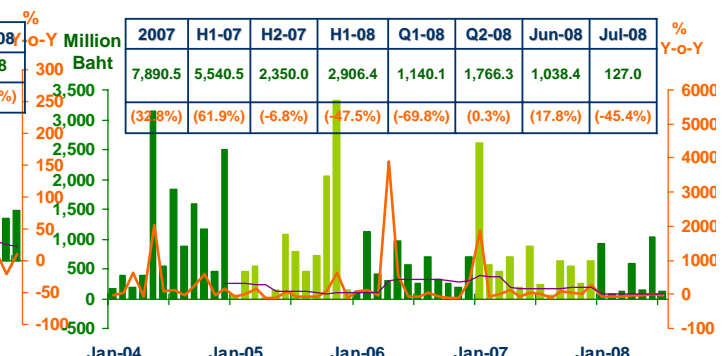
Construction Areas Permitted in Municipal Zone



Land Transaction Fee



Investment Value of Projects Approved by BOI



Sources: Cement Thai Plc. and Jalapathan Cement Plc.; Municipality Offices; Provincial Land Offices; Customs Department; Northern Region Investment and Economic Center (BOI)

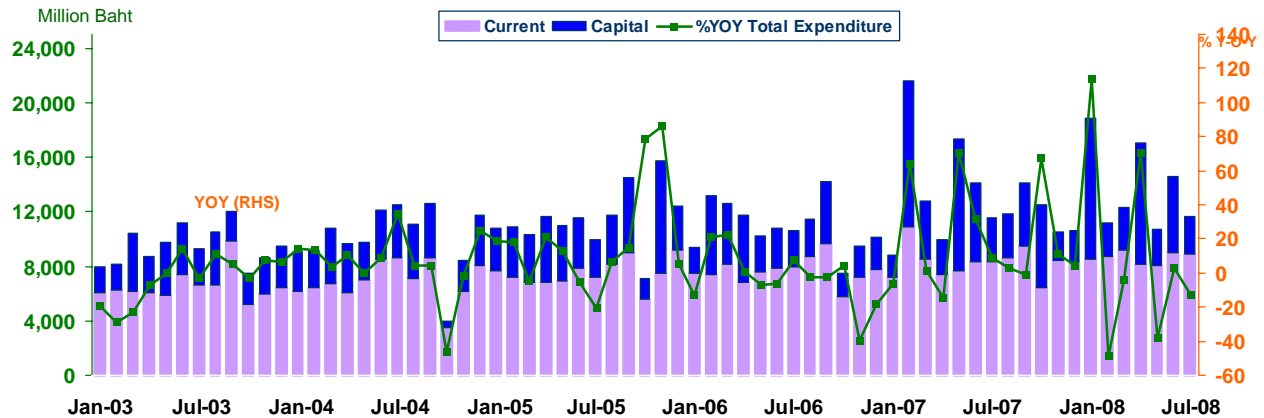


การเบิกจ่ายเงินงบประมาณผ่านคลังจังหวัดในภาคเหนือ

Economic Research Division, Northern Region Office

Actual Expenditures

Expenditure	2007	2007		2008				
		H1-07	H2-07	H1-08	Q1-08	Q2-08	Jun-08	Jul-08
Current	99,637.7	49,989.3	49,648.4	51,625.9	26,463.7	25,162.2	8,970.8	8,886.6
	(8.0)	(10.5)	(5.6)	(3.3)	(-0.8)	(8.0)	(7.7)	(6.5)
Capital	56,196.0	34,723.7	21,472.3	33,051.0	15,907.5	17,143.5	5,604.9	2,785.9
	(44.3)	(53.6)	(31.4)	(-4.8)	(-3.9)	(-5.7)	(-3.3)	(-13.4)
Total	155,833.7	84,713.0	71,120.7	84,676.9	42,371.2	42,305.7	14,575.7	11,672.5
	(18.8)	(24.9)	(12.2)	(0.0)	(-2.0)	(2.0)	(3.2)	(0.9)



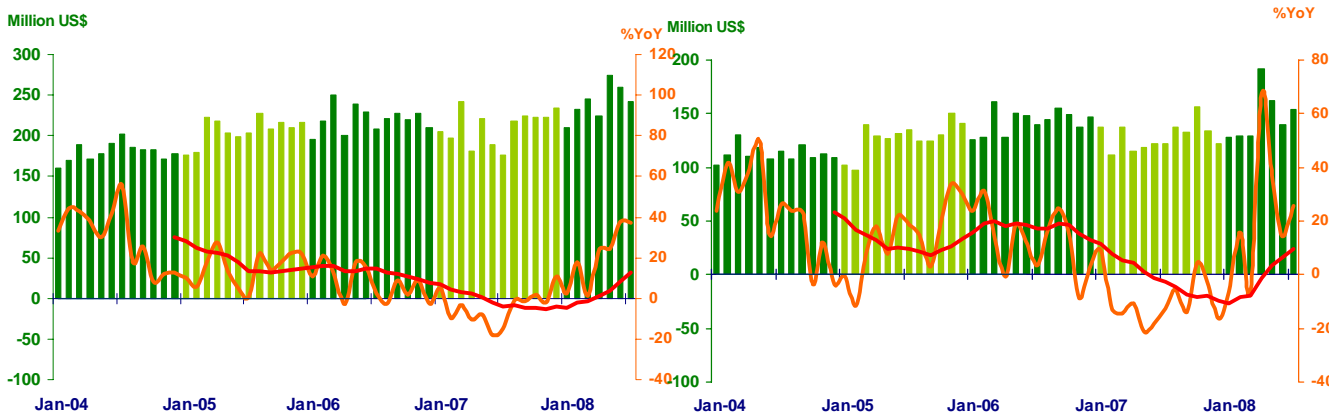
Foreign Trade

Economic Research Division, Northern Region Office

	2007	2007		2008				
		H1	H2	H1	Q1	Q2	Jun	Jul
EXPORTS	2,535.5	1,253.3	1,300.2	1,446.6	688.5	758.2	260.5	242.2
	(-4.3%)	(-7.4%)	(-1.1%)	(17.1%)	(6.7%)	(28.5%)	(37.9%)	(36.9%)
IMPORTS	1,546.7	740.9	805.8	880.3	386.8	493.5	139.2	153.1
	(-9.9%)	(-12.1%)	(-7.7%)	(18.8%)	(0.1%)	(39.2%)	(14.5%)	(25.2%)
Trade Balance	988.8	494.4	494.4	566.3	301.7	264.7	121.4	88.4

Export

Import

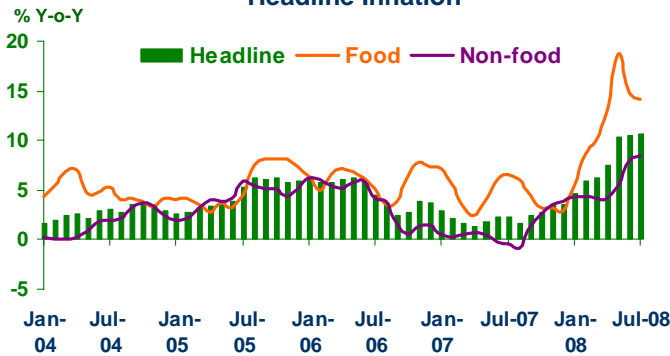




Price Level

Economic Research Division, Northern Region Office

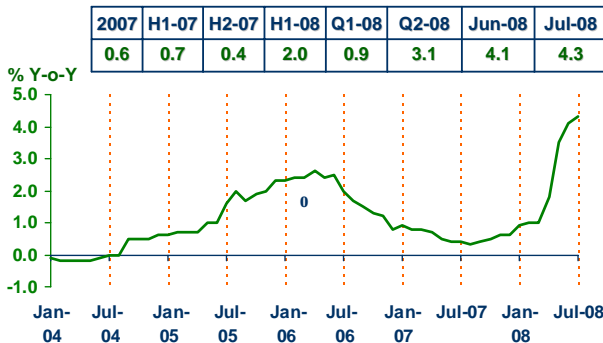
Headline Inflation



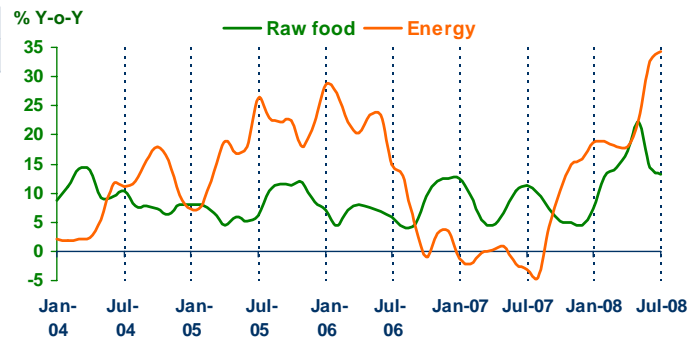
Headline inflation (2002 = 100)

	2007			2008				
	2007	H1	H2	H1	Q1	Q2	Jun	Jul
Headline	2.3	2.0	2.7	7.6	5.6	9.5	10.5	10.7
Food	4.6	4.7	4.4	11.8	8.0	15.5	14.7	14.2
Non-food	1.0	0.4	1.7	5.0	4.2	5.9	7.9	8.5

Core Inflation



Rawfood and Energy



Sources: Bureau of Trade and Economic Indices, Ministry of Commerce
 Note: Northern region's Core CPI data has been released since January 2002

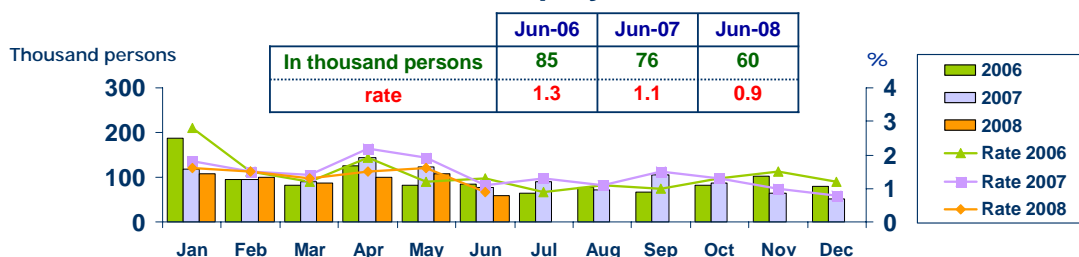


Labor Force Survey

Economic Research Division, Northern Region Office

	% of Total Labor Force (as of Jun 2008)	Q1-07 (Δ%)	Q2-07 (Δ%)	Q3-07 (Δ%)	Q4-07 (Δ%)	Q1-08 (Δ%)	May-08 (Δ%)	Jun-08 (Δ%)
Labor Force (1,000 Persons)	100.0	6,534	6,756	6,732	6,716	6,629	6,636	6,642
Employed persons	99.0	0.6	3.5	3.0	0.1	1.4	1.6	-1.1
• Agriculture	45.8	-0.8	0.2	3.8	2.4	-0.1	-1.9	-9.5
• Non-agriculture	53.2	1.9	7.1	2.3	-2.6	2.7	4.8	7.5
- Wholesale & retail trade	14.5	8.7	3.5	-7.1	-11.9	0.1	0.6	12.4
- Manufacturing	9.3	-6.0	14.2	17.1	-2.9	-3.7	6.7	-15.7
- Construction	6.5	-16.4	13.5	-5.3	-2.9	2.2	22.7	-4.6
- Hotel & restaurants Services	5.6	20.4	-3.7	-10.2	2.9	-3.0	-4.2	14.6
- Others	17.3	8.3	6.7	12.8	4.6	12.6	3.4	24.7
Unemployed persons	0.9	10.0	-10.2	57.0	-35.1	-10.3	-13.6	-21.0
Seasonally inactive persons	0.1	-49.5	93.9	-28.1	-27.9	43.5	-1.0	-83.0

Unemployment



Source : National Statistical Office



DEPOSITS AND CREDITS OF COMMERCIAL BANKS

Economic Research Division, Northern Region Office

