

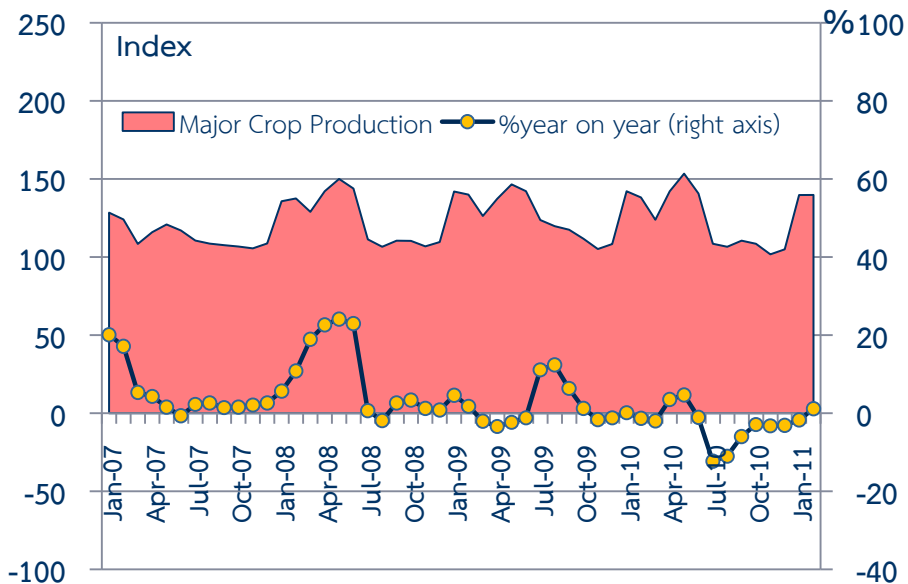
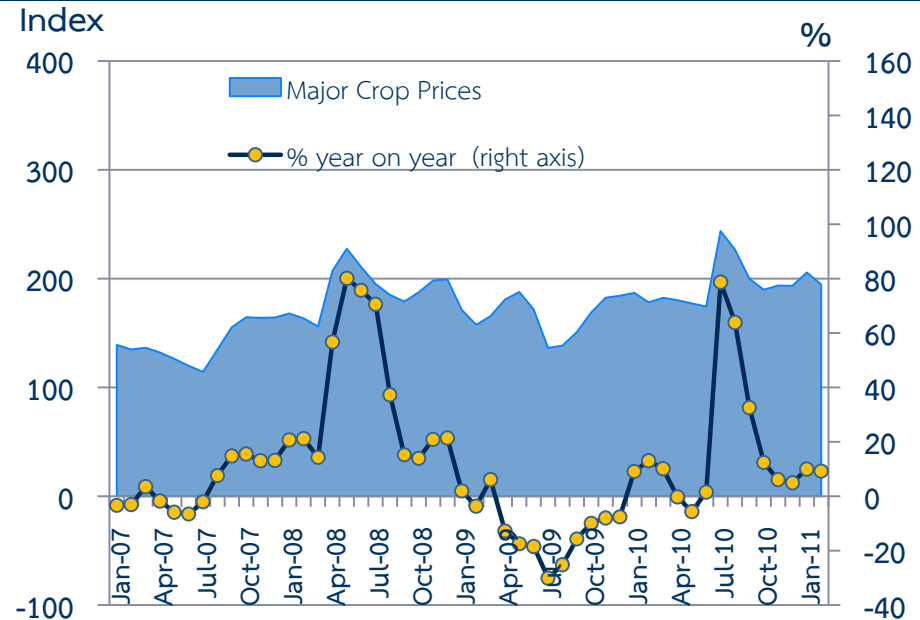
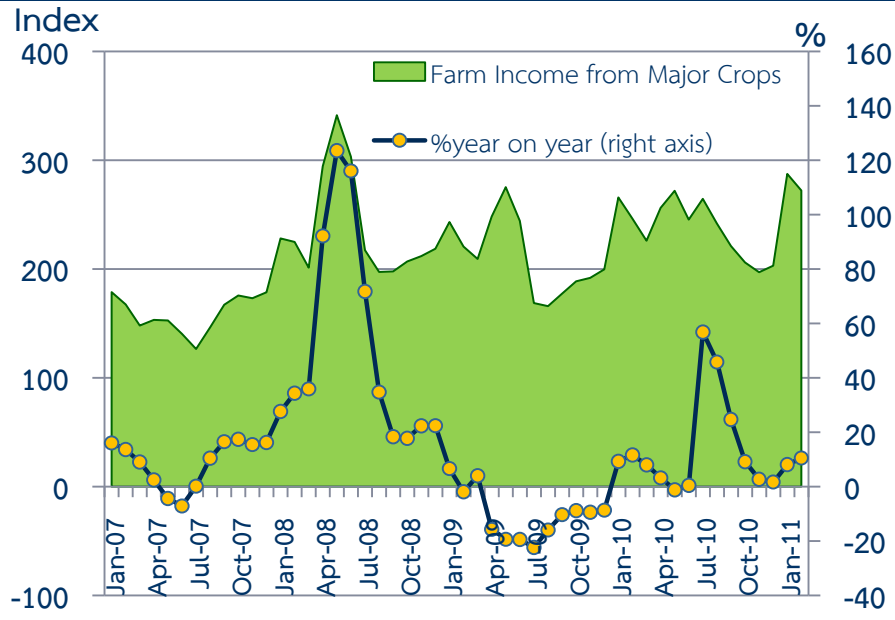


The Northern Region Economy in February 2011



Farm Income from Major Crops

Regional Economic Division, Northern Region Office



CHANGE IN FARM INCOME FROM MAJOR CROPS,
MAJOR CROP PRODUCTION AND MAJOR CROP PRICES

% yoy	2009	2010	2010			2011	
			H1	Q3	Q4	Jan	Feb
Farm Income	-8.3	9.2	6.6	35.8	3.4	8.1	10.5
Production	0.7	-2.7	0.2	-8.6	-3.1	-1.7	1.2
Price	-9.0	12.2	6.4	48.5	6.7	10.0	9.3

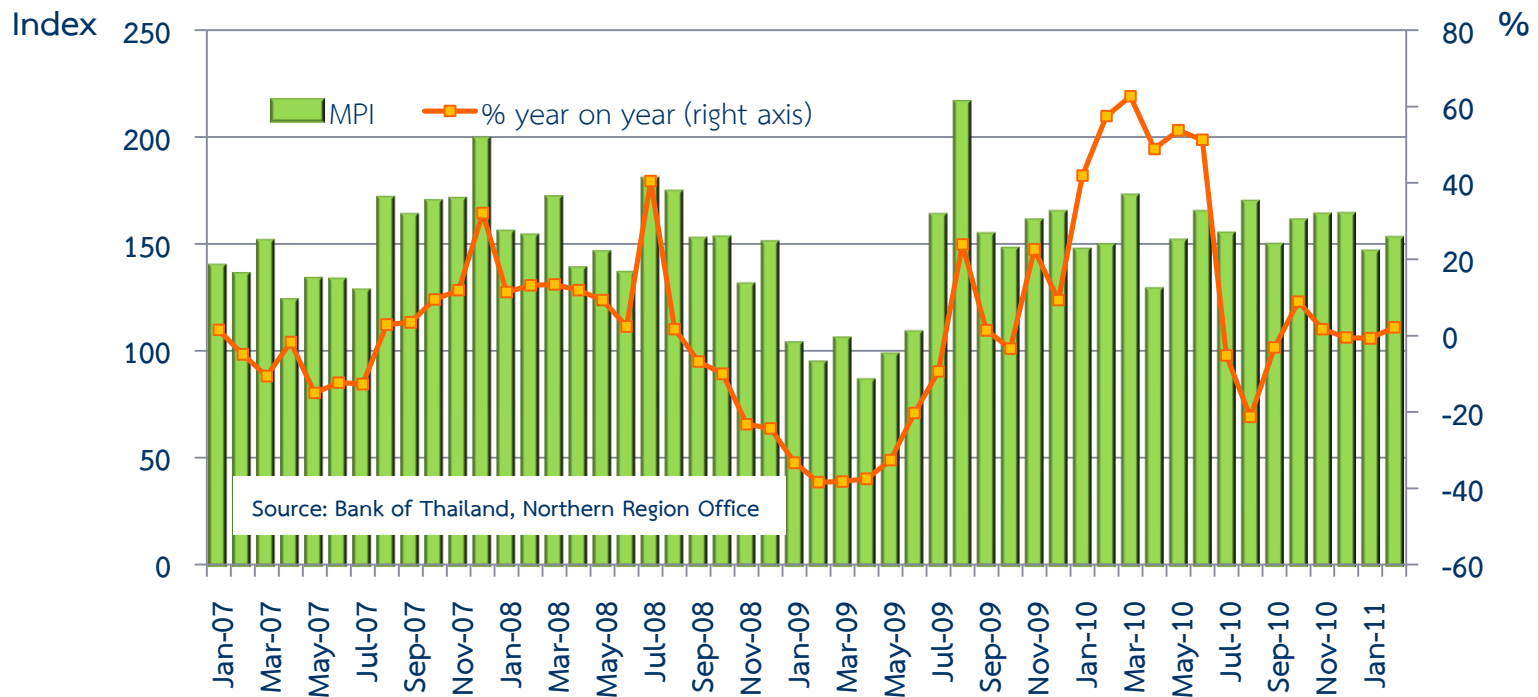
Source : Index constructed using data from Ministry of Agriculture and Co-operatives.
(2002 =100)



Manufacturing Production Index

Regional Economic Division, Northern Region Office

	2009	2010	H1-10	H2-10	Q3-10	Q4-10	Jan-11	Feb-11 ^P
MPI level	134.0	156.6	152.5	160.6	158.3	163.0	146.5	152.8
% year on year	-12.9%	16.9%	52.7%	-4.4%	-11.1%	3.2%	-0.7%	2.2%
MPI level, seasonally adjusted	-	-	-	-	147.6	147.7	158.2	169.7
% month on month, quarter on quarter, s.a.	-	-	-	-	-10.2%	0.07%	13.4%	7.3%



Tourism

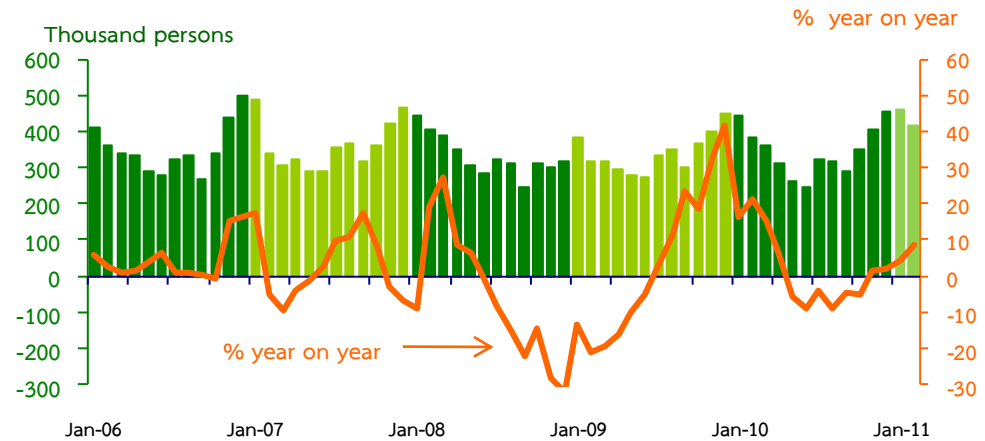
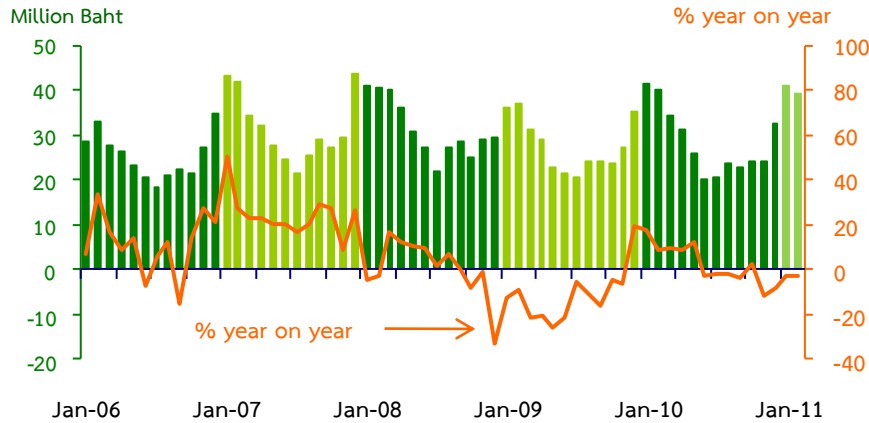
Regional Economic Division, Northern Region Office

Hotel and restaurant VAT

2009	2010	H1-10	H2-10	Q3-10	Q4-10	Jan-11p	Feb-11p
332.7	344.1	195.6	148.1	67.2	80.8	41.1	39.1
(-11.6%)	(3.4%)	(10.0%)	(-4.6%)	(-2.5%)	(-6.3%)	(-2.6%)	(-3.2%)

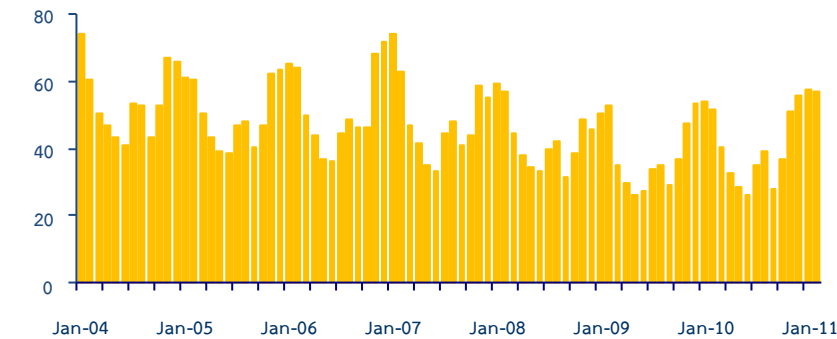
Air passengers

2009	2010	H1-10	H2-10	Q3-10	Q4-10	Jan-11	Feb-11
4,052.9	4,141.9	2,006.9	2,134.9	925.7	1,209.1	461.3	417.0
(1.7%)	(2.2%)	(8.3%)	(-3.0%)	(-6.1%)	(-0.4%)	(3.9)	(8.5)



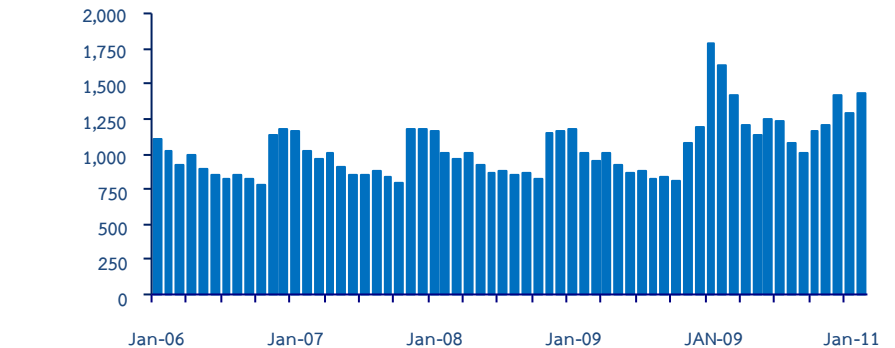
Hotel occupancy rate

2009	2010p	H1-10	H2-10	Q3-10	Q4-10	Jan-11	Feb-11p
38.0	40.2	38.9	41.1	34.6	47.6	57.4	56.9



Hotel average room rate

2009	2010	H1-10	H2-10	Q3-10	Q4-10	Jan-10p	Feb-10p
963.8	1,290.7	1,415.2	1,198.6	1,094	1,305.1	1,290.9	1,439.7

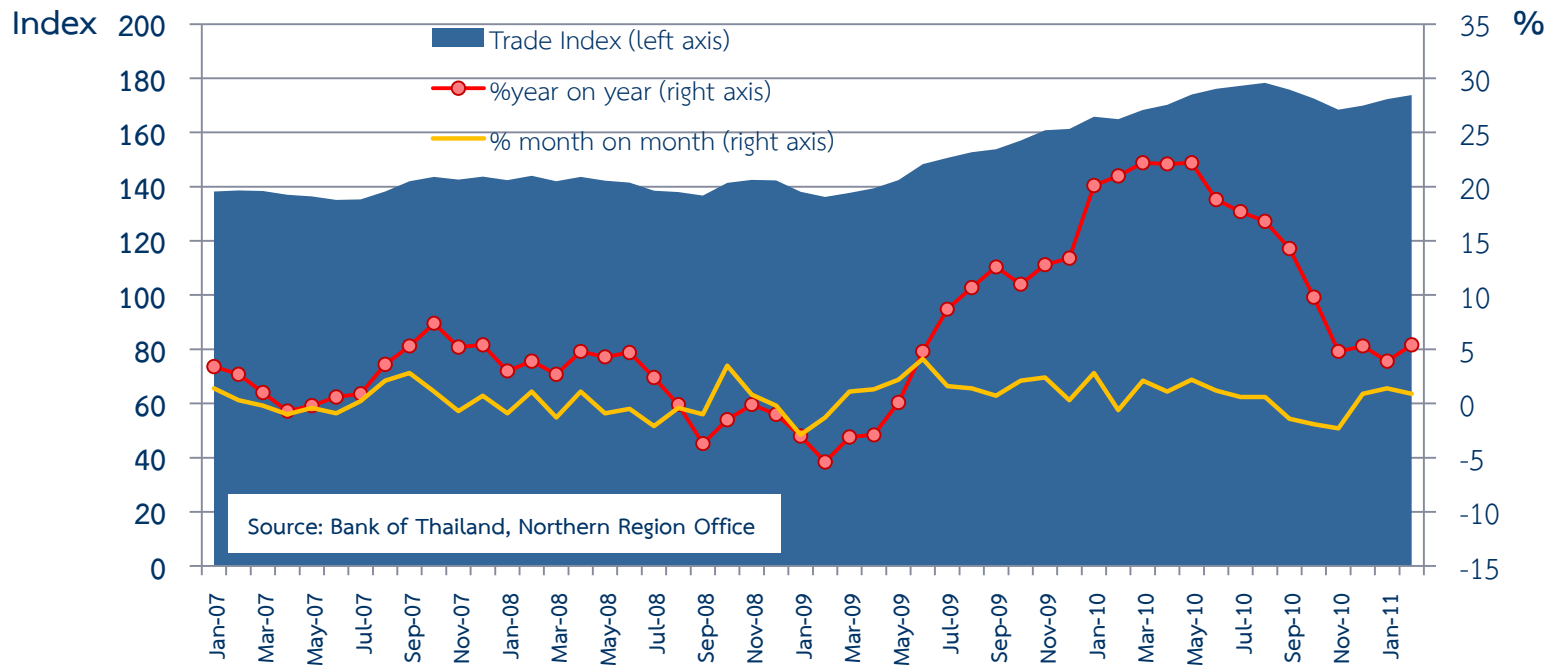




Trade Index

Regional Economic Division, Northern Region Office

	Weight	2009	2010	2010				2011	
				H1-10	H2-1	Q3-10	Q4-10	Jan-11	Feb-11 ^P
Trade Index	100%	148.2	171.8	169.9	173.7	177.1	170.3	172.3	173.8
% year on year (%yoy)		4.9	15.9	21.0	11.3	16.2	6.6	3.9	5.4
Motor Vehicles/Cycles Trade	46.0%	143.5	167.7	164.2	171.3	173.0	169.6	170.1	174.3
% yoy		2.7	16.9	21.1	13.1	17.9	8.6	5.3	8.8
Wholesale Trade	21.0%	167.7	197.7	195.6	199.8	203.9	195.8	198.5	190.3
% yoy		6.7	17.9	23.0	13.3	15.5	11.1	6.6	3.6
Retail Trade	33.0%	144.2	163.5	163.9	163.1	168.5	157.6	161.3	164.4
% yoy		7.0	13.4	19.8	7.6	14.4	1.2	0.3	1.9

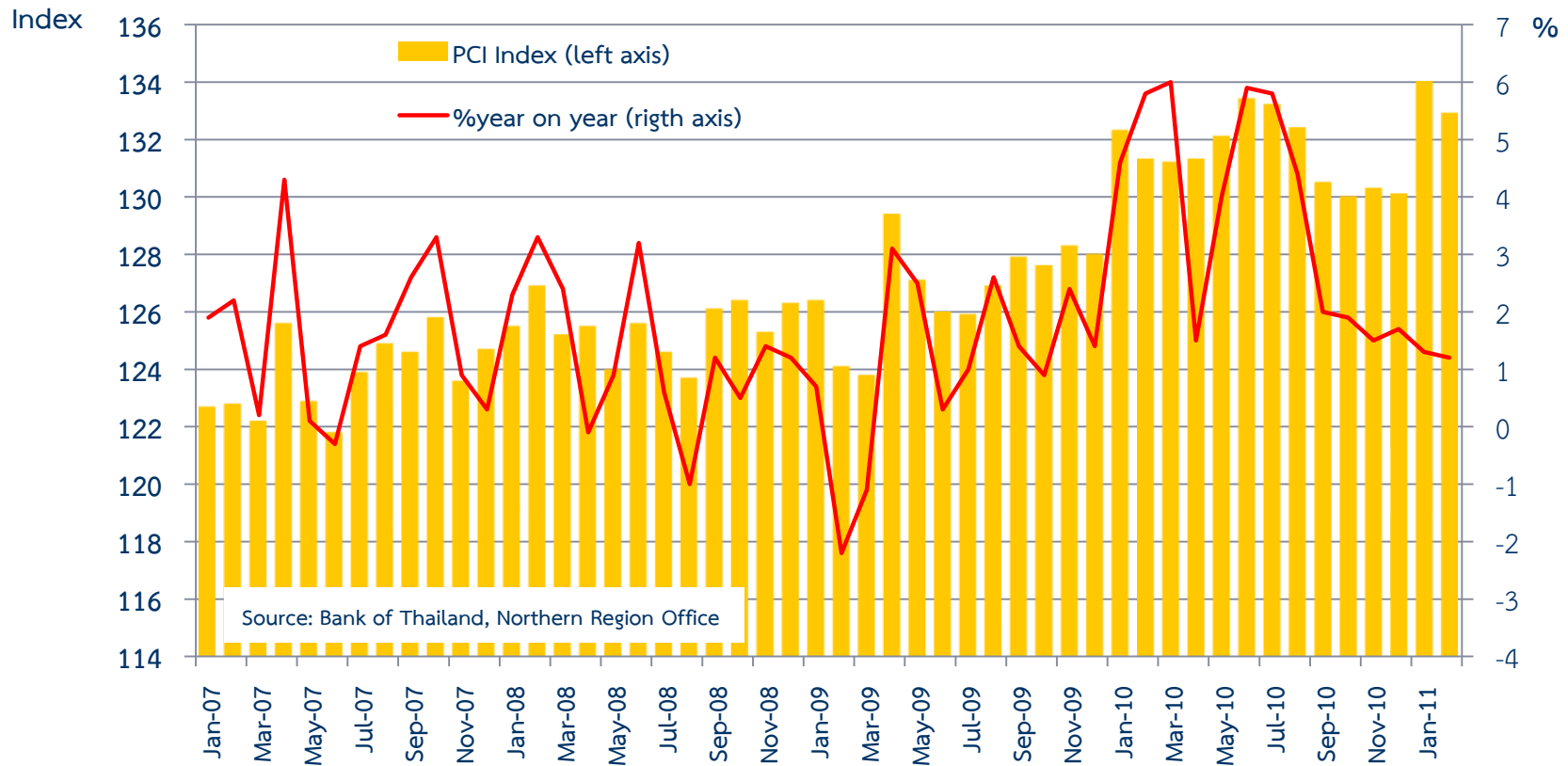




Private Consumption Index (Seasonally Adjusted)

Regional Economic Division, Northern Region Office

	2009	2010	2010				2011	
			H1	H2	Q3	Q4	Jan	Feb ^P
PCI	126.8	131.5	131.9	131.1	132.0	130.1	134.0	132.9
% year on year	1.1	3.7	4.6	2.9	4.1	1.7	1.3	1.2
%month on month, %quarter on quarter			3.5	-0.7	-0.2	-1.4	3.0	-0.8

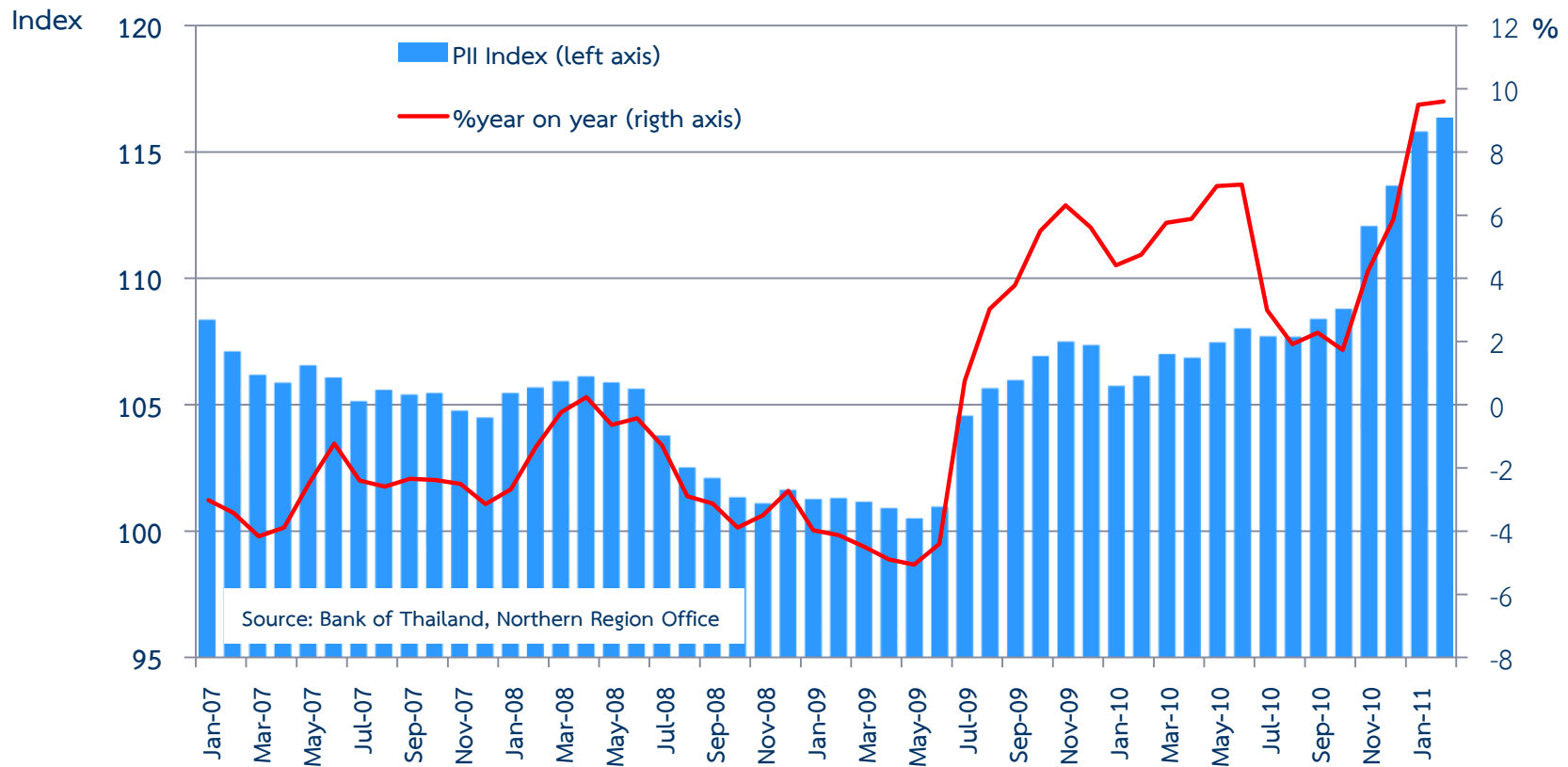




Private Investment Index (Seasonally Adjusted)

Regional Economic Division, Northern Region Office

	2009	2010	H1-10	H2-10	Q3-10	Q4-10	Jan-11	Feb-11
PII	103.7	108.3	106.9	109.7	107.9	111.5	115.8	116.3
%year on year	-0.2	4.4	5.8	3.2	2.4	3.9	9.5	9.6
%month on month, %quarter on quarter	-0.2	4.4	0.5	2.7	0.4	3.3	1.9	0.5





Foreign Trade

Regional Economic Division, Northern Region Office

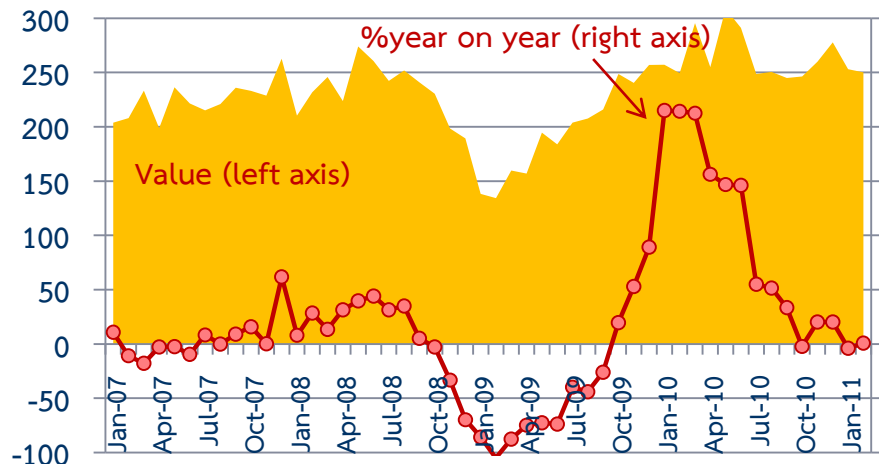
	2009	2010	2010				2011	
			H1	H2	Q3	Q4	Jan	Feb
EXPORTS	2,340.6	3,184.5	1,656.7	1,527.9	744.0	783.9	253.0	250.1
	-16.4%	36.1%	71.2%	11.3%	18.6%	5.1%	-1.6%	0.3%
IMPORTS	1,233.7	1,384.5	659.6	732.9	376.0	356.9	114.1	108.8
	-24.2%	19.9%	42.9%	5.8%	13.9%	-1.6%	14.3%	5.7%
Trade Balance	1,106.9	1,800.0	997.1	795.0	368.0	427.0	138.9	358.9

Sources: Customs Department

Exports

Mn USD

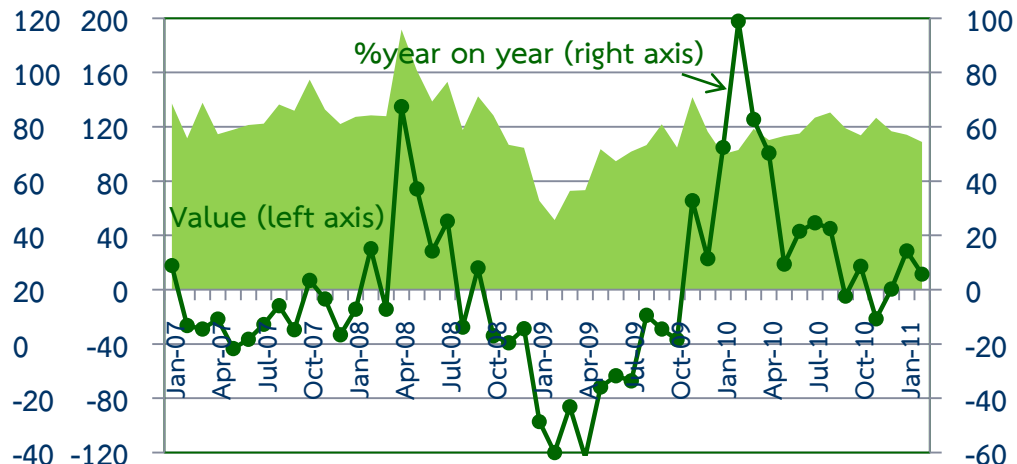
%



Imports

Mn USD

%





Public Expenditure

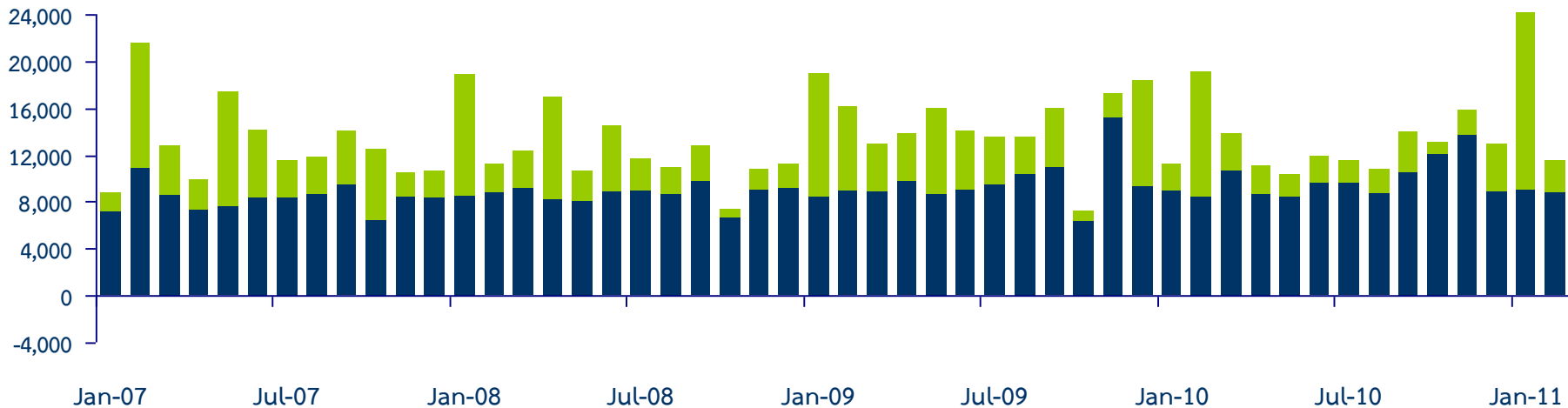
Regional Economic Division, Northern Region Office

Expenditure	2009	2010	2010				2011	
			H1	H2	Q3	Q4	Jan	Feb
Current	115,760.3 (11.5)	118,153.8 (2.1)	54,705.8 (1.3)	63,447.9 (2.8)	28,928.9 (-6.2)	34,519.1 (11.7)	9,011.2 (1.4)	8,778.4 (3.8)
Capital	61,999.1 (36.1)	37,599.8 (-39.4)	22,838.0 (-39.8)	14,761.9 (-38.6)	7,306.9 (-39.8)	7,454.9 (-37.4)	15,200.9 (564.8)	2,674.8 (-74.9)
Total	177,759.4 (19.0)	155,753.6 (-12.4)	77,543.8 (-15.7)	78,209.8 (-8.8)	36,235.8 (-15.7)	41,974.0 (-1.9)	24,212.1 (116.7)	11,453.2 (-40.1)

Million Baht

■ Current

■ Capital

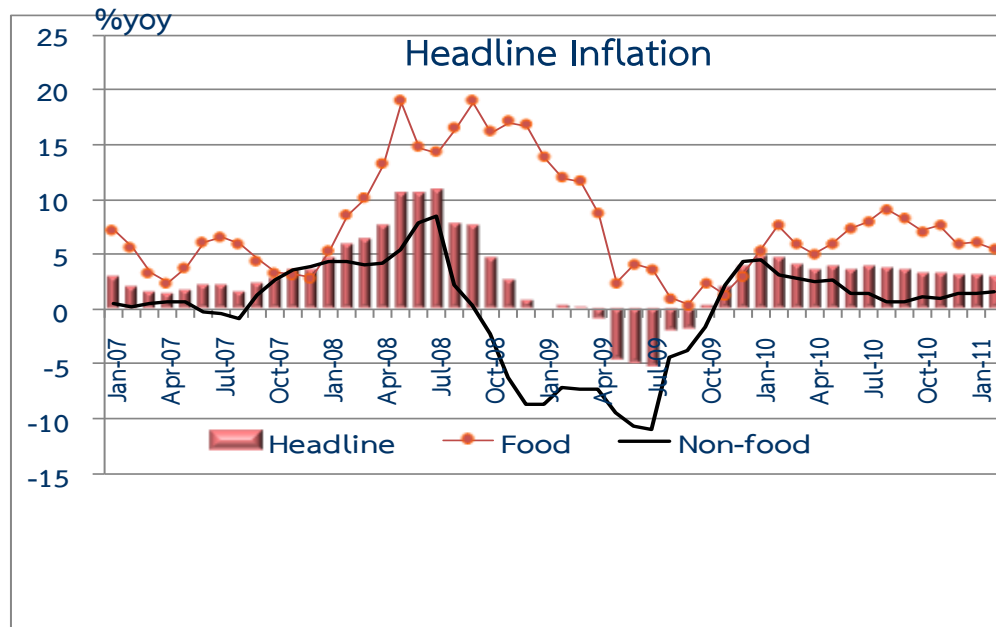


Source: Ministry of Finance



Inflation

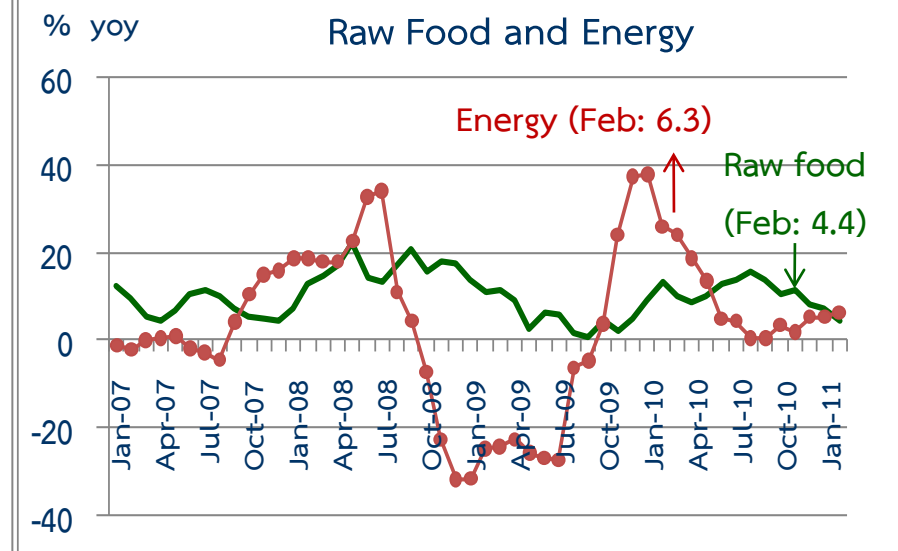
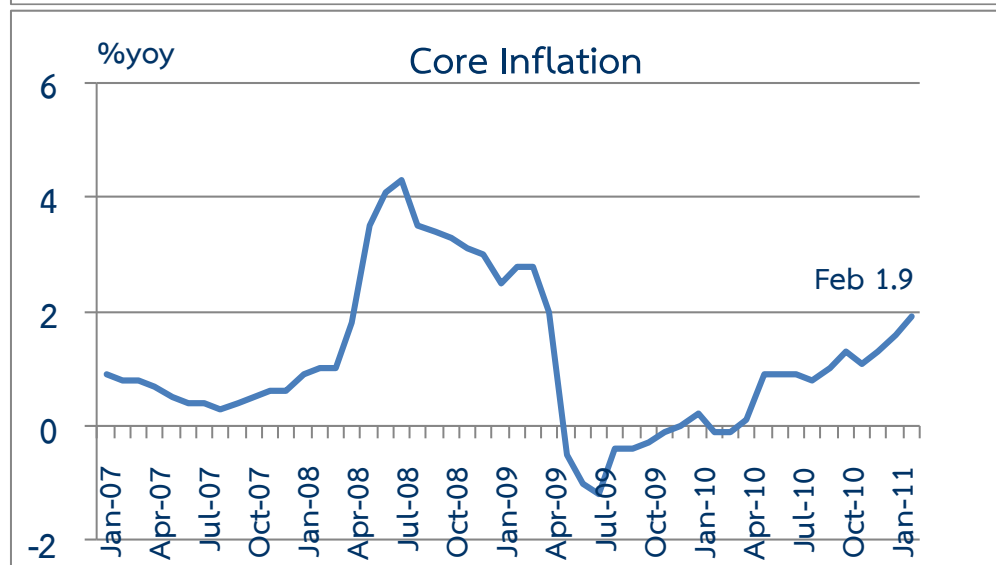
Regional Economic Division, Northern Region Office



	2009	2010	2010				2011	
			H1	H2	Q3	Q4	Jan	Feb
Headline	-1.1	3.7	4.1	3.4	3.6	3.2	3.1	3.0
Food	5.1	7.0	6.2	7.7	8.5	6.9	6.1	5.5
Non-food	-5.6	1.9	2.9	1.0	0.9	1.1	1.4	1.6

Sources: Bureau of Trade and Economic Indices, Ministry of Commerce

Note: Northern region's Core CPI data has been released since January 2002

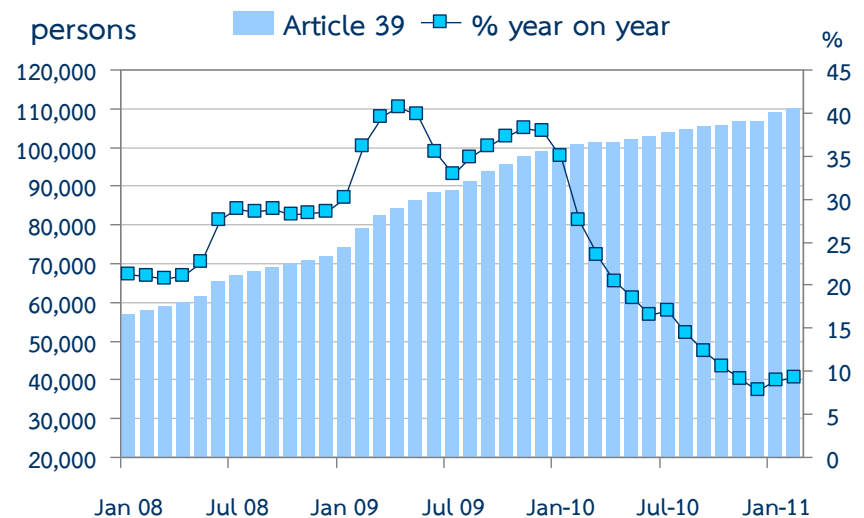
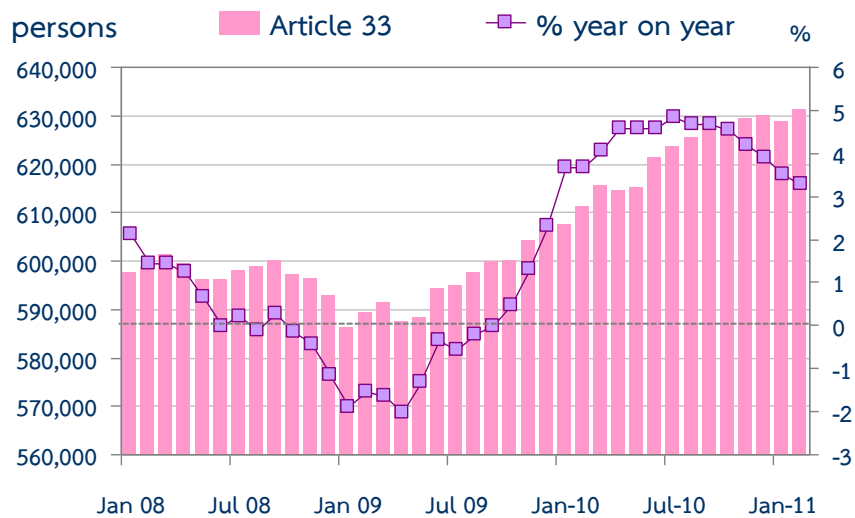




Compensation Fund

Regional Economic Division, Northern Region Office

Number of insured persons	Dec 10	Jan 11	Jan 12
Article 33	629,884	628,873	631,209
% year on year	(3.9)	(3.5)	(3.3)
Article 39	106,512	108,768	109,838
% year on year	(7.7)	(8.9)	(9.2)
Total	736,396	737,641	741,047
% year on year	(4.4)	(4.3)	(4.1)



ที่มา : สำนักงานประกันสังคม

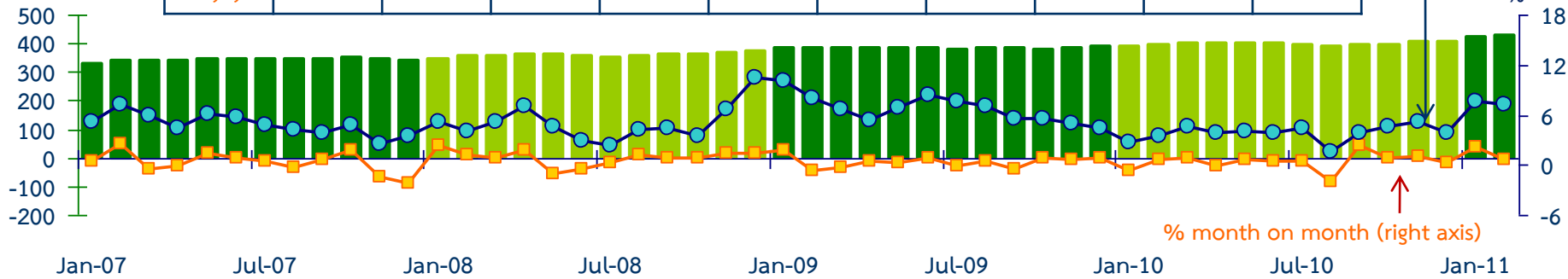


Deposits and Credits of Commercial Banks

Regional Economic Division, Northern Region Office

	2009	2010	2010						2011	
			H1	H2	Q3	Q4	Nov	Dec	Jan	Feb
Deposits	392.0	407.4	400.3	407.4	396.7	407.4	404.3	407.4	421.8	426.5
%yoy	(4.4)	(3.9)	(3.8)	(3.9)	(3.9)	(3.9)	(5.2)	(3.9)	(7.7)	(7.3)

Billion Baht



	2009	2010	2010						2011	
			H1	H2	Q3	Q4	Nov	Dec	Jan	Feb
Credits	309.7	349.4	325.0	349.4	335.4	349.4	346.3	349.4	349.4	349.7
%yoy	(1.3)	(12.8)	(8.9)	(12.8)	(12.5)	(12.8)	(14.1)	(12.8)	(13.8)	(13.3)

Billion Baht

