

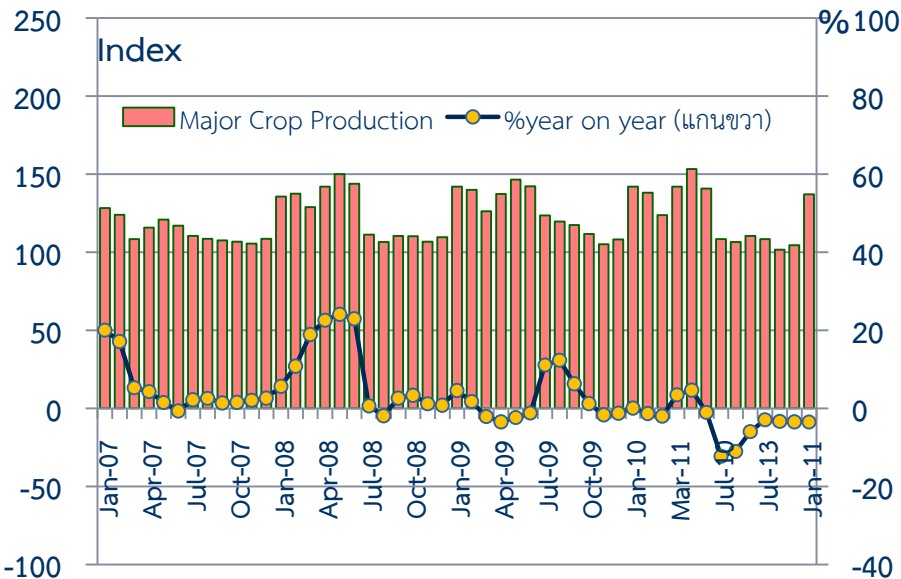
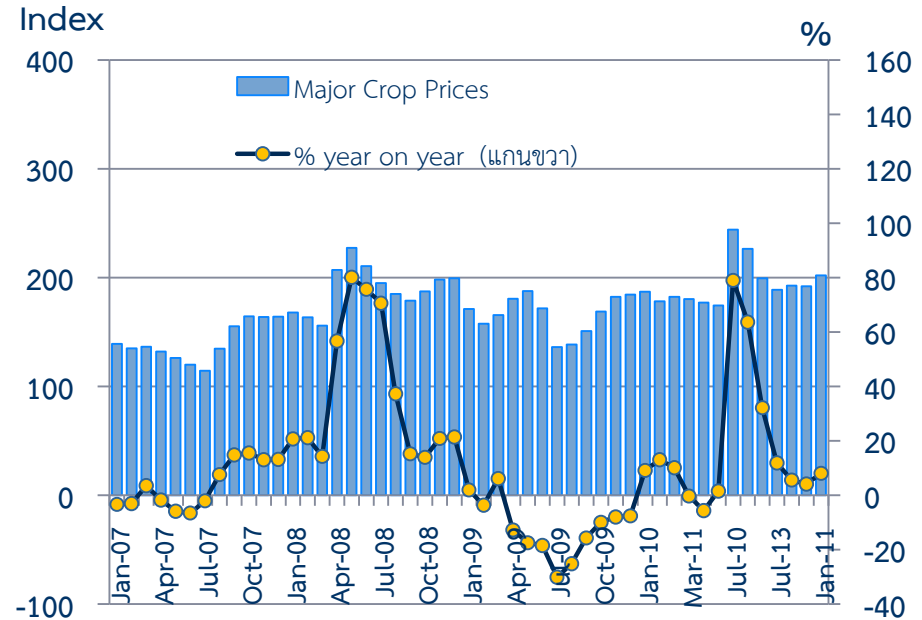
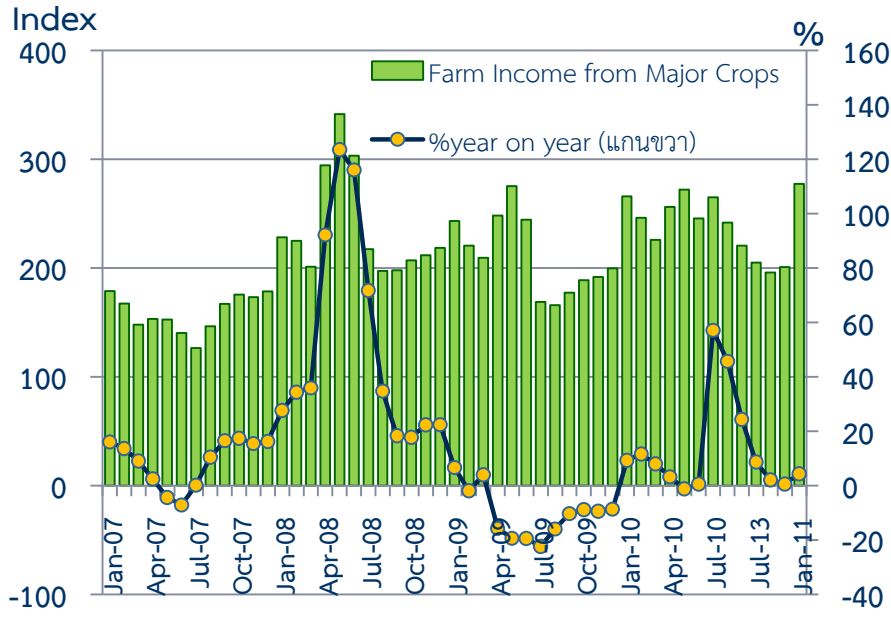


## **The Northern Region Economy in January 2011**



# Farm Income from Major Crops

Regional Economic Division, Northern Region Office



CHANGE IN FARM INCOME FROM MAJOR CROPS,  
MAJOR CROP PRODUCTION AND MAJOR CROP PRICES

% (Y-O-Y)	2009	2010	2010				2011
			H1	Q3	Q4	Dec	Jan
Farm Income	-8.3	8.8	6.6	35.6	2.6	0.6	4.3
Production	0.7	-2.7	0.2	-8.5	-3.3	-3.4	-3.5
Price	-9.0	11.9	6.4	48.3	6.0	4.1	8.1

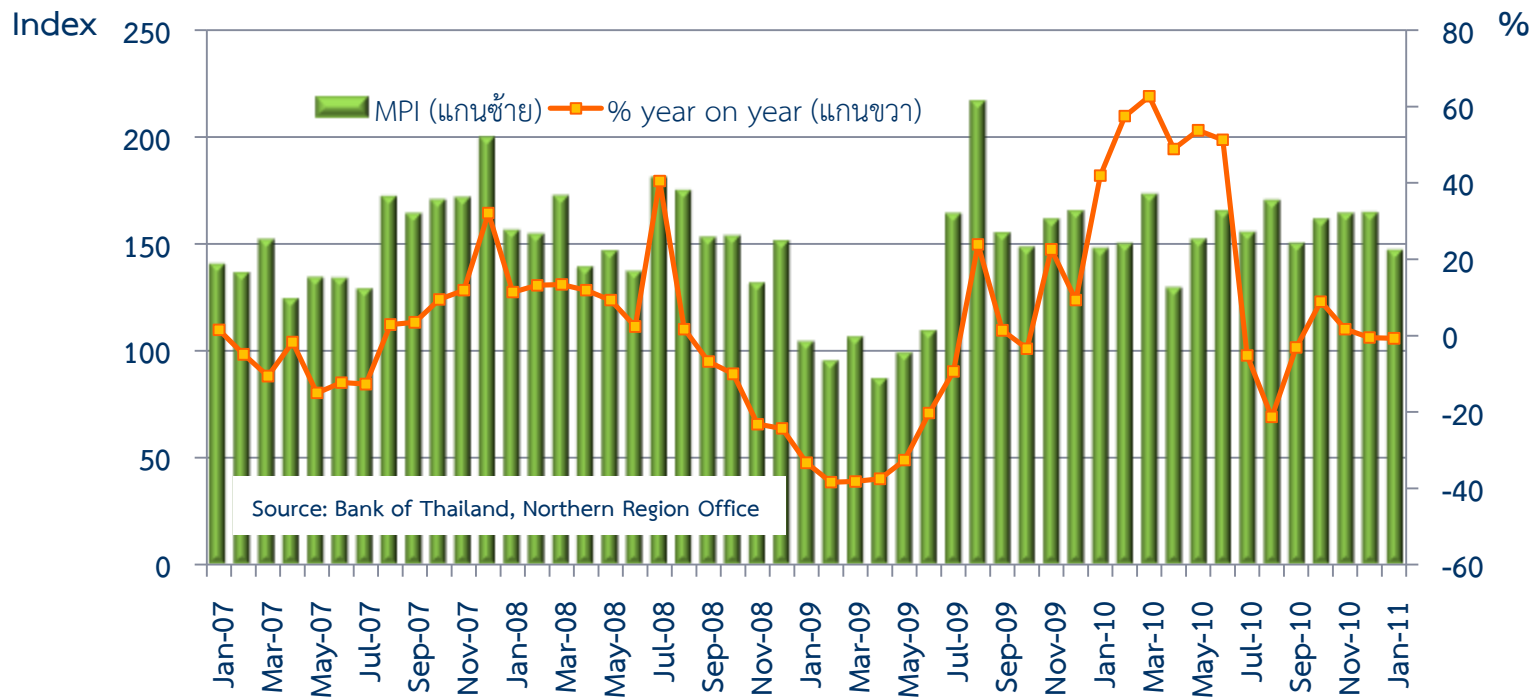
Source : Index constructed using data from Ministry of Agriculture and Co-operatives. (2002 =100)



# Manufacturing Production Index

Regional Economic Division, Northern Region Office

	2009	2010	H1-10	H2-10	Q3-10	Q4-10	Dec-10	Jan-11 <sup>P</sup>
MPI level	134.0	156.6	152.5	160.6	158.3	163.0	164.0	146.5
MPI %yoy	-12.9%	16.9%	52.7%	-4.4%	-11.1%	3.2%	-0.5%	-0.7%
MPI, level s.a.	-	-	-	-	147.6	147.7	139.5	158.2
% MoM, QoQ s.a.	-	-	-	-	-10.2%	0.07%	-8.4%	13.4%





# Tourism

Regional Economic Division, Northern Region Office

Hotel and restaurant VAT

2009	2010	H1-10	H2-10p	Q3-10	Q4-10p	Dec-10	Jan-11p
332.7	344.1	195.6	148.1	67.2	80.8	32.5	40.3
(-11.6%)	(3.4%)	(10.0%)	(-4.6%)	(-2.5%)	(-6.3%)	(-7.8%)	(-4.3%)

Air passengers

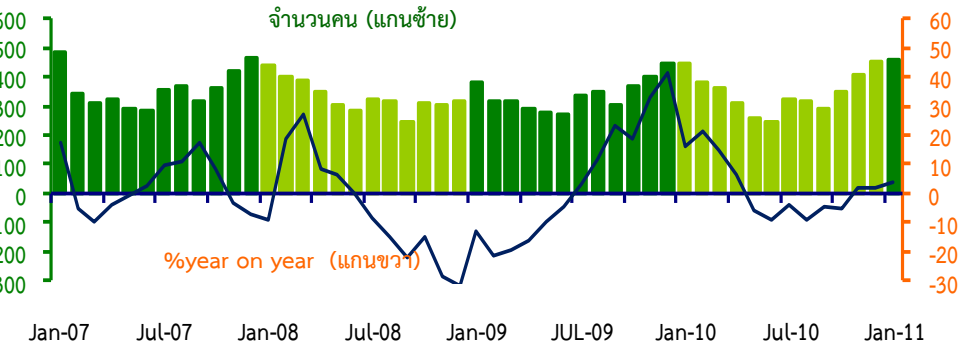
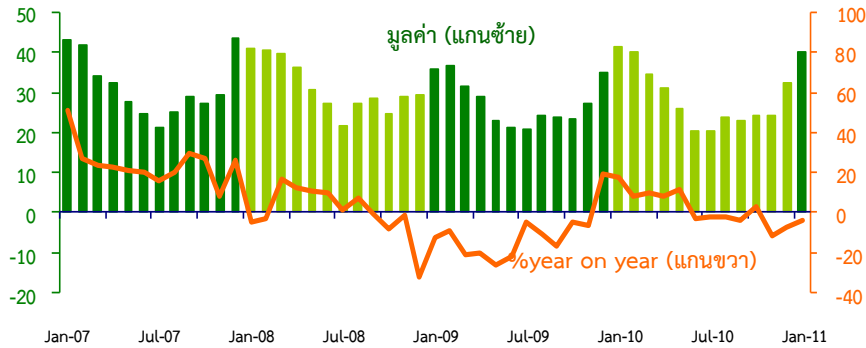
2009	2010	H1-10	H2-10	Q3-10	Q4-10	Dec-10	Jan-11
4,052.9	4,141.9	2,006.9	2,134.9	925.7	1,209.1	455.5	461.3
(1.7%)	(2.2%)	(8.3%)	(-3.0%)	(-6.1%)	(-0.4%)	(1.8)	(3.9)

Million Baht

%yoy

'000 persons

% yoy



Hotel occupancy rate

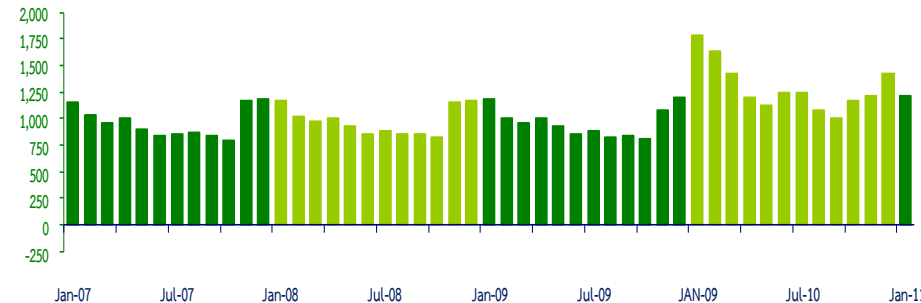
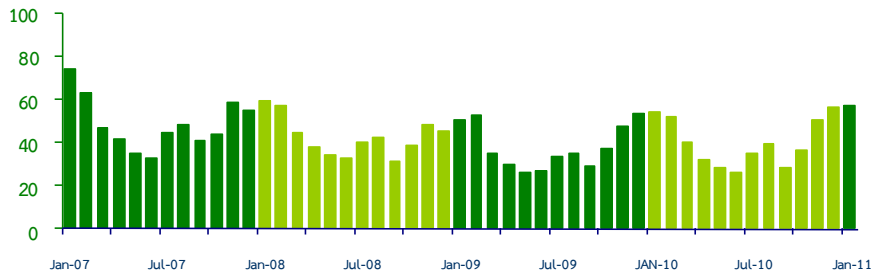
2009	2010p	H1-10	H2-10	Q3-10	Q4-10	Dec-10	Jan-11p
38.0	40.2	38.9	41.1	34.6	47.6	56.0	57.4

Hotel average room rate

2009	2010	H1-10	H2-10	Q3-10	Q4-10	Dec-10	Jan-10p
963.8	1,290.7	1,415.2	1,198.6	1,094	1,305.1	1,416.4	1,216.6

%

Baht/room

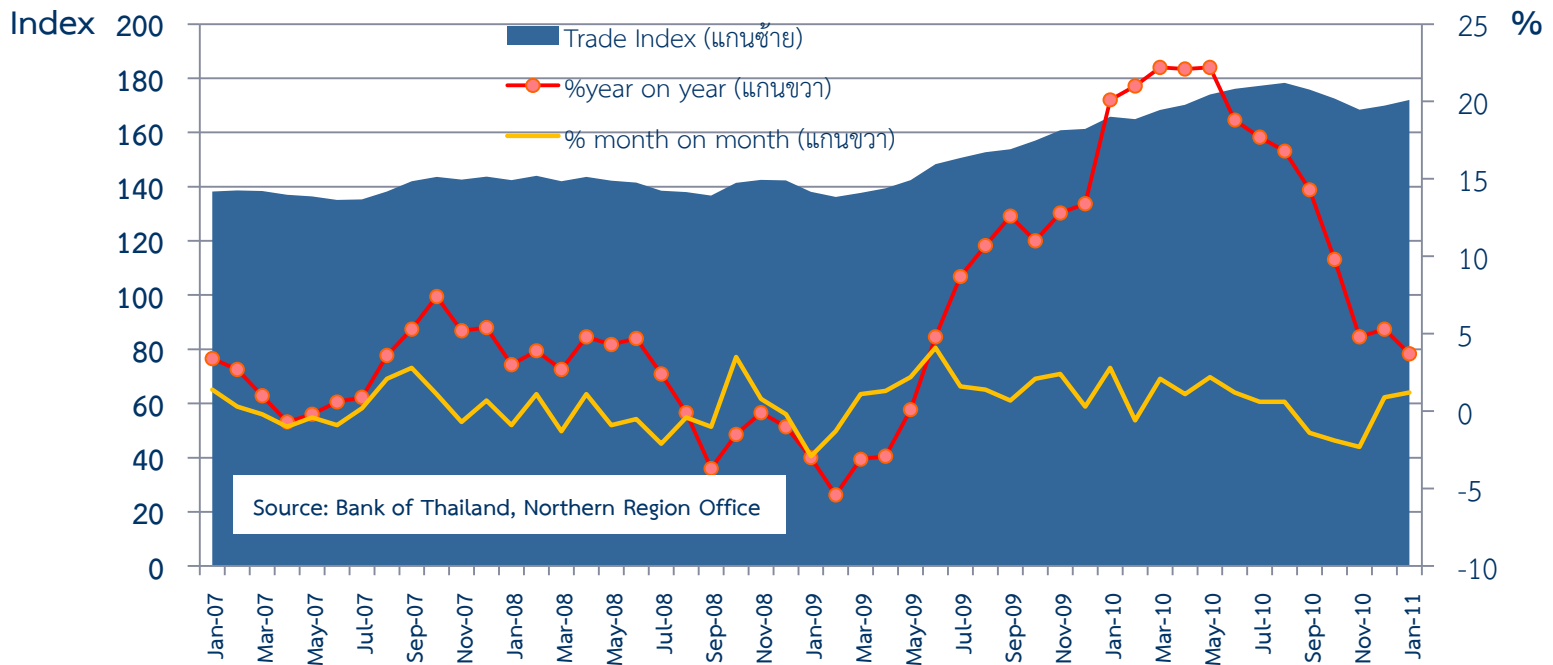




# Trade Index

Regional Economic Division, Northern Region Office

	Weight 2010	2009	2010	H1-10	H2-1	Q3-10	Q4-10	Dec-10	Jan-11 <sup>P</sup>
Trade Index	100%	148.2	171.8	169.9	173.7	177.1	170.3	169.9	172.0
		(4.9%)	(15.9%)	(21.0%)	(11.3%)	(16.2%)	(6.6%)	(5.3%)	(3.7%)
Motor Vehicles/Cycles Trade	46.0%	143.5	167.7	164.2	171.3	173.0	169.6	169.1	169.7
		(2.7%)	(16.9%)	(21.1%)	(13.1%)	(17.9%)	(8.6%)	(6.8%)	(5.1%)
Wholesale Trade	21.0%	167.7	197.7	195.6	199.8	203.9	195.8	195.2	198.4
		(6.7%)	(17.9%)	(23.0%)	(13.3%)	(15.5%)	(11.1%)	(9.5%)	(6.5%)
Retail Trade	33.0%	144.2	163.5	163.9	163.1	168.5	157.6	157.6	161.1
		(7.0%)	(13.4%)	(19.8%)	(7.6%)	(14.4%)	(1.2%)	(0.7%)	(0.2%)

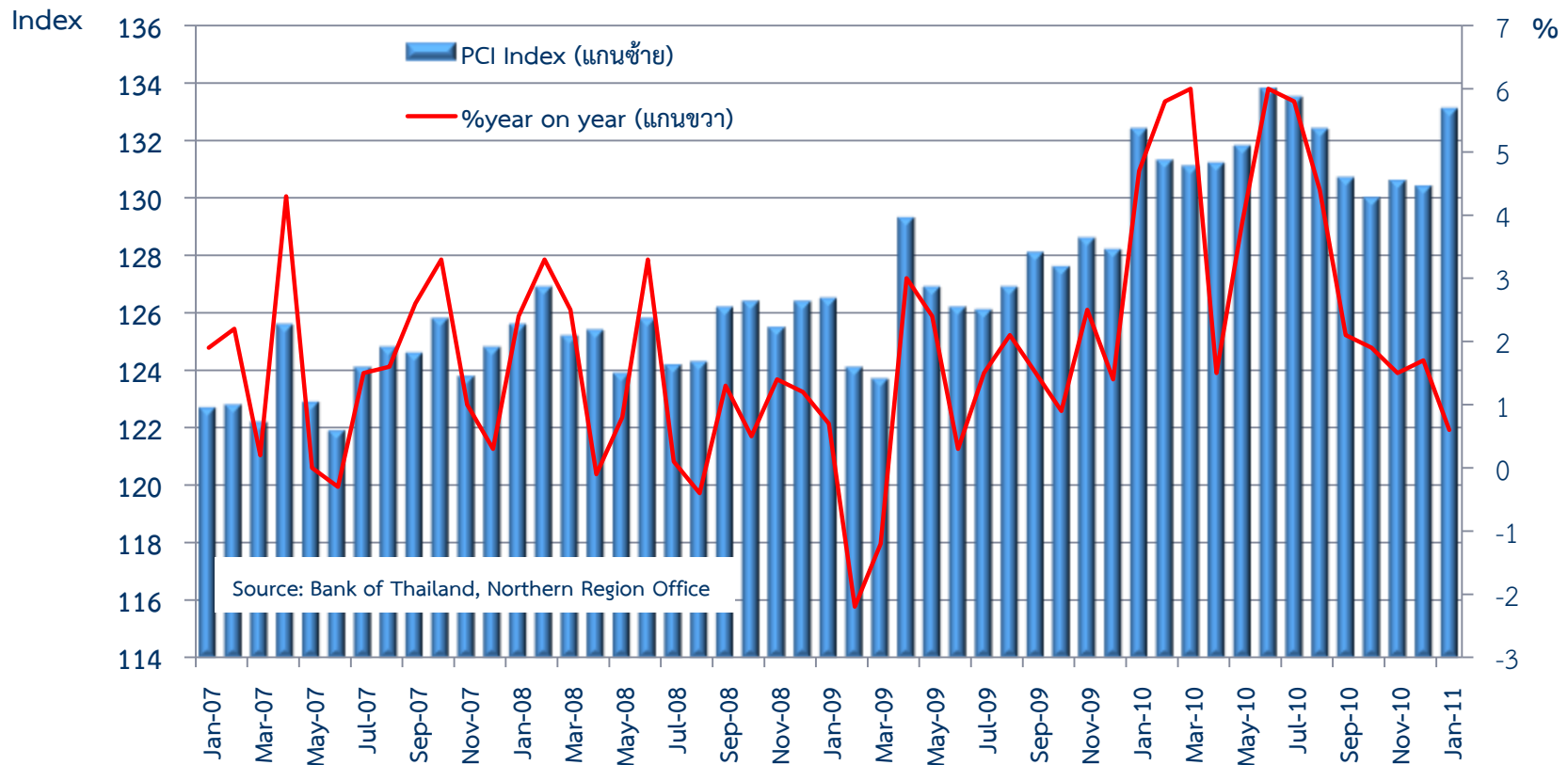




# Private Consumption Index

Regional Economic Division, Northern Region Office

	2009	2010	2010					2011
			H1	H2	Q3	Q4	Dec	Jan <sup>P</sup>
PCI	126.8	131.6	131.9	131.3	132.2	130.3	130.4	133.1
%YOY	1.1	3.8	4.6	2.9	4.1	1.7	1.7	0.6
%MOM, QOQ			3.4	-0.5	0.0	-0.4	-0.2	2.1



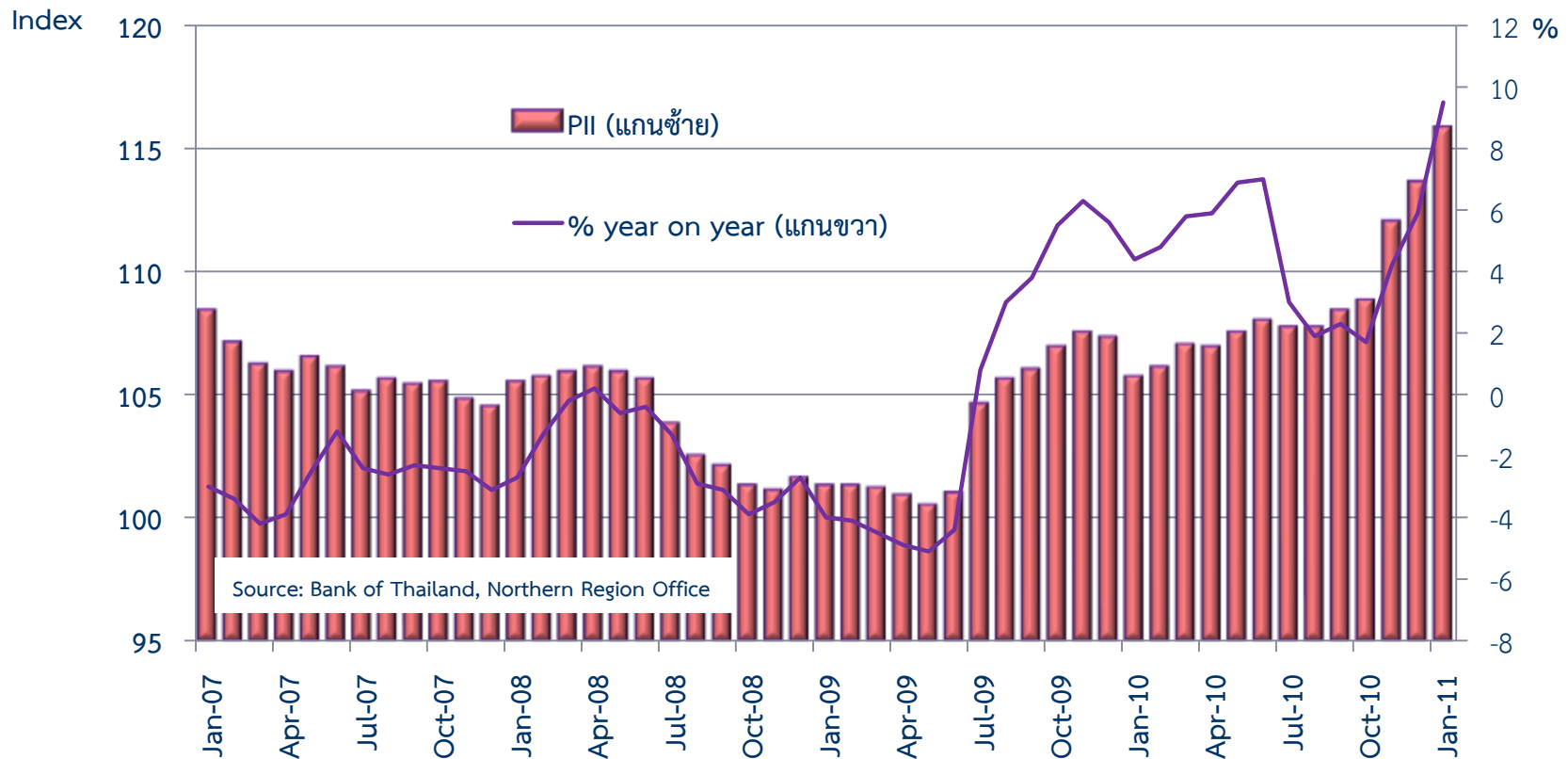


# Private Investment Index

## Seasonally Adjusted, 1995=100

Regional Economic Division, Northern Region Office

	2009	2010	H1-10	H2-10	Q3-10	Q4-10	Dec-10	Jan-11
PII	103.7	108.3	106.9	109.7	107.9	111.5	113.6	115.8
%YOY	-0.2	4.4	5.8	3.2	2.4	3.9	5.9	9.5
%MOM, QOQ	-0.2	4.4	0.5	2.7	0.4	3.3	1.4	1.9





# Foreign Trade

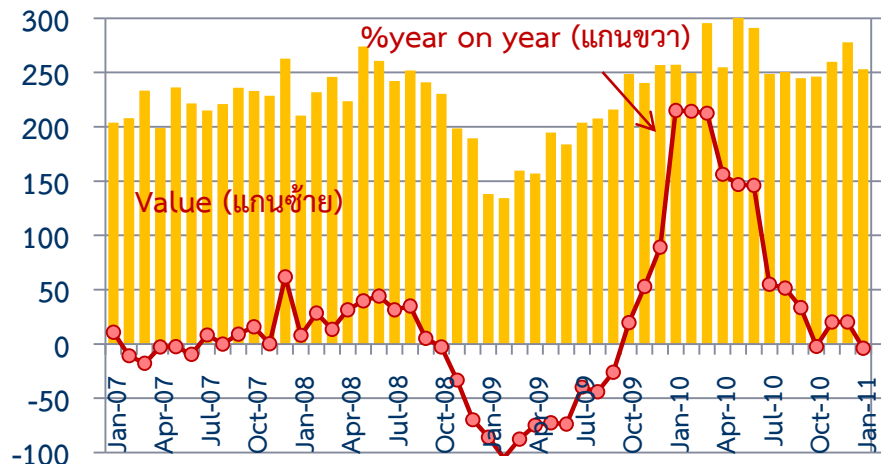
Regional Economic Division, Northern Region Office

		2009	2010	2010					2011
				H1	H2	Q3	Q4	Dec	
EXPORTS	Million USD	2,340.6	3,184.5	1,656.7	1,527.9	744.0	783.9	277.7	253.0
	%yoy	-16.4%	36.1%	71.2%	11.3%	18.6%	5.1%	8.1%	-1.6%
IMPORTS	Million USD	1,233.7	1,384.5	659.6	732.9	376.0	356.9	116.7	114.1
	%yoy	-24.2%	19.9%	42.9%	5.8%	13.9%	-1.6%	0.2%	14.3%
Trade Balance	Million USD	1,106.9	1,800.0	997.1	795.0	368.0	427.0	161.0	138.9

Sources: Customs Department

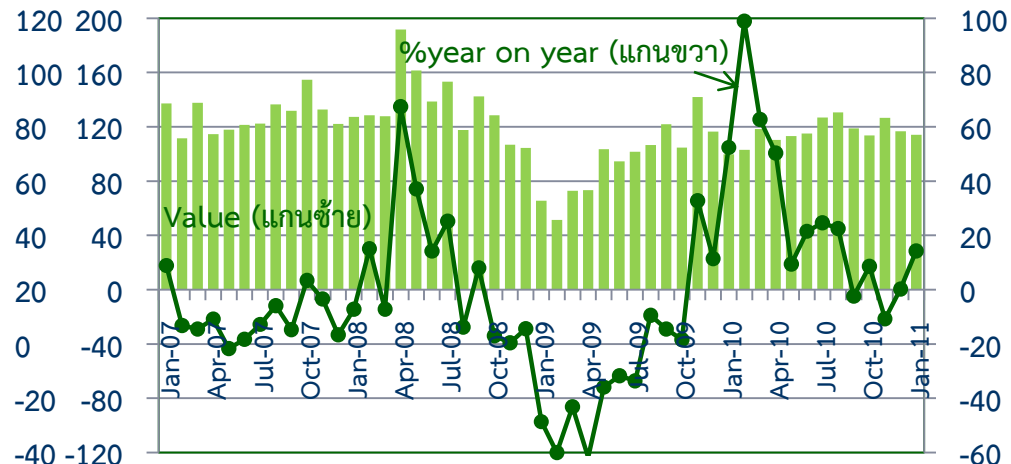
## Exports

Mn USD



## Imports

% Mn USD





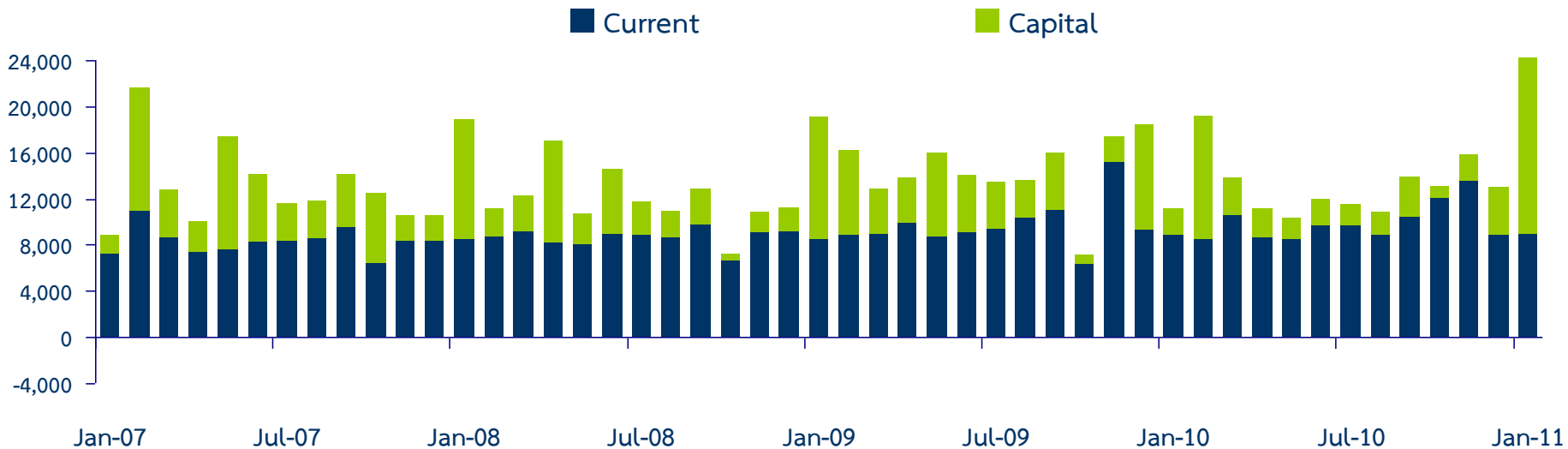


# Public Expenditure

Regional Economic Division, Northern Region Office

		2009	2010	2010					2011
				H1	H2	Q3	Q4	Dec	Jan
Current	Million Baht	115,760.3	118,153.8	54,705.8	63,447.9	28,928.9	34,519.1	8,897.5	9,011.2
	%yoy	(11.5)	(2.1)	(1.3)	(2.8)	(-6.2)	(11.7)	(-4.4)	(1.4)
Capital	Million Baht	61,999.1	37,599.8	22,838.0	14,761.9	7,306.9	7,454.9	4,054.6	15,200.9
	%yoy	(36.1)	(-39.4)	(-39.8)	(-38.6)	(-39.8)	(-37.4)	(-55.1)	(564.8)
Total	Million Baht	177,759.4	155,753.6	77,543.8	78,209.8	36,235.8	41,974.0	12,952.1	24,212.1
	%yoy	(19.0)	(-12.4)	(-15.7)	(-8.8)	(-15.7)	(-1.9)	(-29.4)	(116.7)

Million Baht

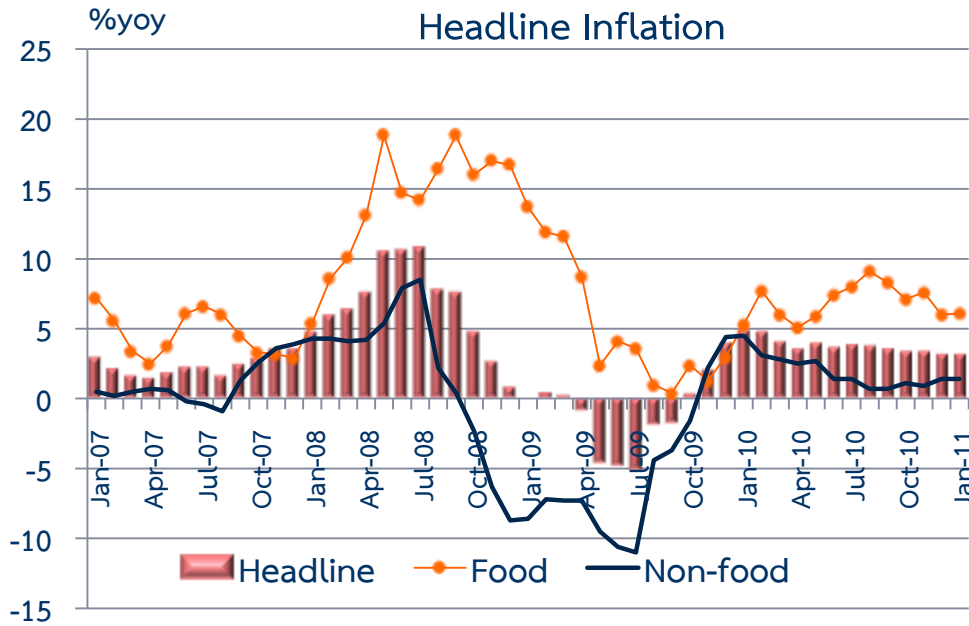


Source: Ministry of Finance



# Inflation

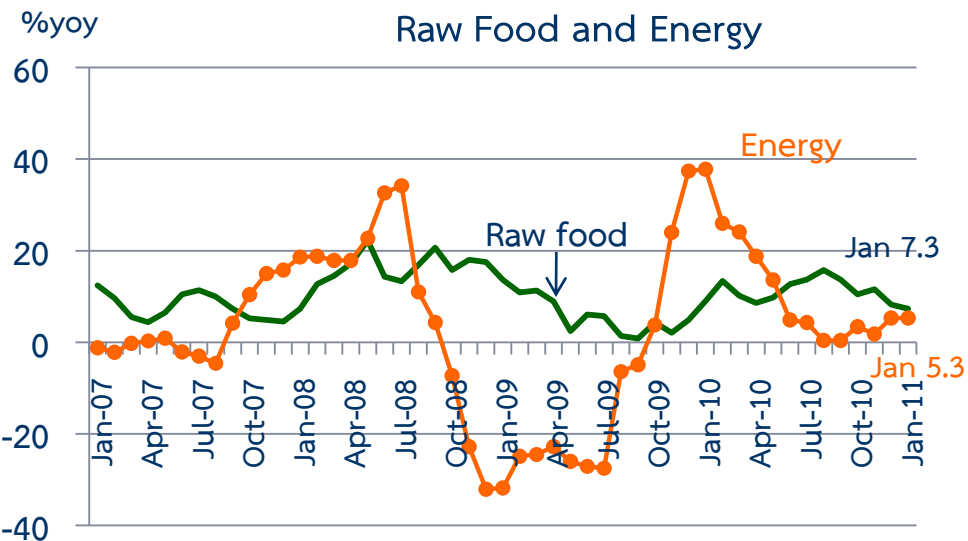
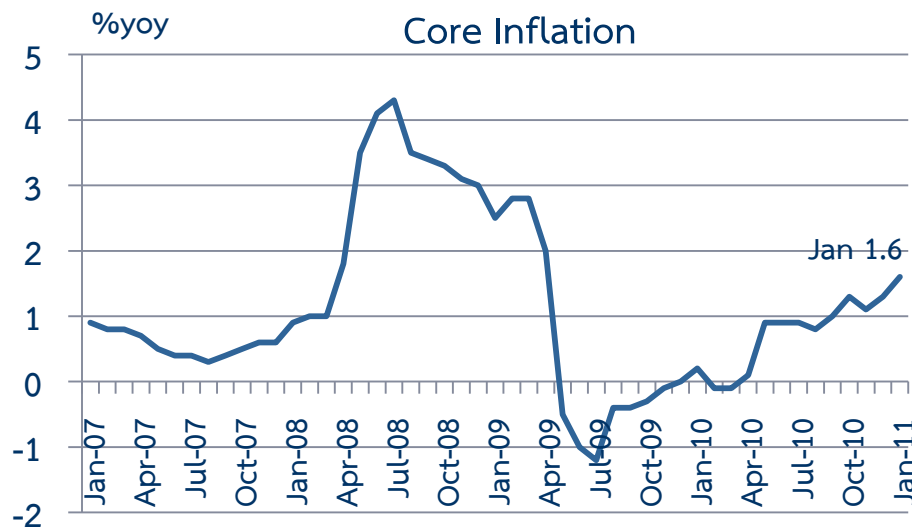
Regional Economic Division, Northern Region Office



	2009	2010	2010					2011
			H1	H2	Q3	Q4	Dec	Jan
Headline	-1.1	3.7	4.1	3.4	3.6	3.2	3.1	3.1
Food	5.1	7.0	6.2	7.7	8.5	6.9	6.0	6.1
Non-food	-5.6	1.9	2.9	1.0	0.9	1.1	1.4	1.4

Sources: Bureau of Trade and Economic Indices, Ministry of Commerce

Note: Northern region's Core CPI data has been released since January 2002

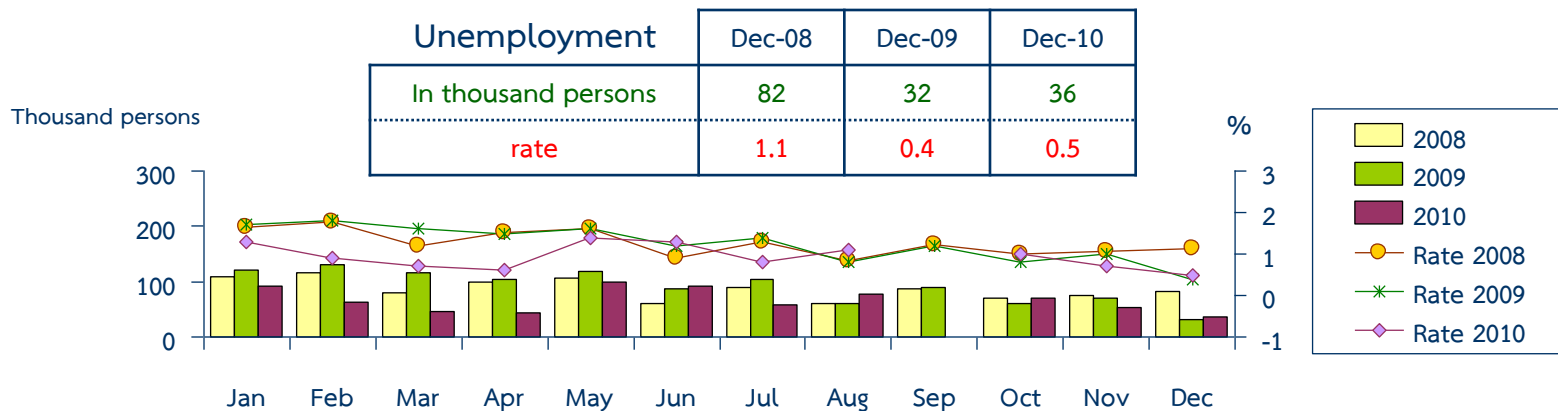




# Labor Force Survey

Regional Economic Division, Northern Region Office

	% of Total Labor Force (as of Dec 2010)	2009 (△%)	2010 (△%)	H1-10 (△%)	H2-10 (△%)	Q3-10 (△%)	Q4-10 (△%)	Nov-10 (△%)	Dec-10 (△%)
Labor Force (1,000 Persons)	100.0	7,172	7,232	7,176	7,287	7,266	7,308	7,250	7,438
Employed persons	99.4	4.7	0.6	1.3	0.7	-0.2	1.5	0.9	2.8
• Agriculture	48.6	2.4	-0.7	0.4	-1.8	-5.0	1.6	-1.1	0.3
• Non-agriculture	50.8	6.7	2.5	2.0	3.0	4.5	1.5	2.7	5.4
- Wholesale & retail trade	14.6	8.4	2.5	4.7	0.3	-2.9	3.6	4.1	4.9
- Manufacturing	9.7	6.2	0.8	0.8	0.8	6.1	-4.3	-3.2	7.3
- Construction	5.6	8.6	1.7	2.6	0.6	5.5	-3.8	-2.1	0.7
- Hotel & restaurants Services	5.9	12.0	5.9	6.5	5.2	4.2	6.2	18.7	9.3
- Others	15.0	3.0	-6.4	-1.8	-11.0	-26.2	3.6	1.7	4.9
Unemployed persons	0.5	5.6	-27.2	-35.8	-13.4	-20.5	-2.3	-25.1	13.4
Seasonally inactive persons	0.1	-40.5	73.7	88.5	30.7	350.1	-50.0	4.4	-79.9



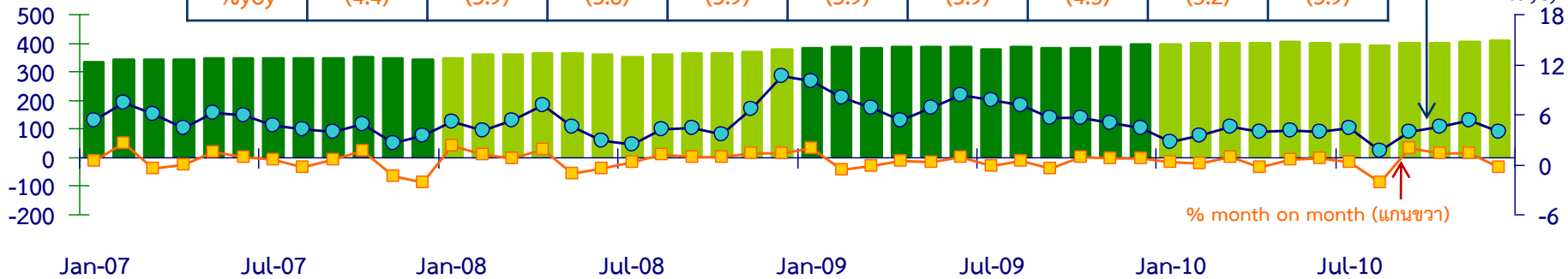


# Deposits and Credits of Commercial Banks

Regional Economic Division, Northern Region Office

	2009	2010	2010						
			H1	H2	Q3	Q4	Oct	Nov	Dec
Deposits	392.0	407.4	400.3	407.4	396.7	407.4	397.6	404.3	407.4
%yoy	(4.4)	(3.9)	(3.8)	(3.9)	(3.9)	(3.9)	(4.5)	(5.2)	(3.9)

Billion Baht



	2009	2010	2010						
			H1	H2	Q3	Q4	Oct	Nov	Dec
Credits	309.7	349.4	325.0	349.4	335.4	349.4	336.2	346.3	349.4
%yoy	(1.3)	(12.8)	(8.9)	(12.8)	(12.5)	(12.8)	(13.0)	(14.1)	(12.8)

Billion Baht

