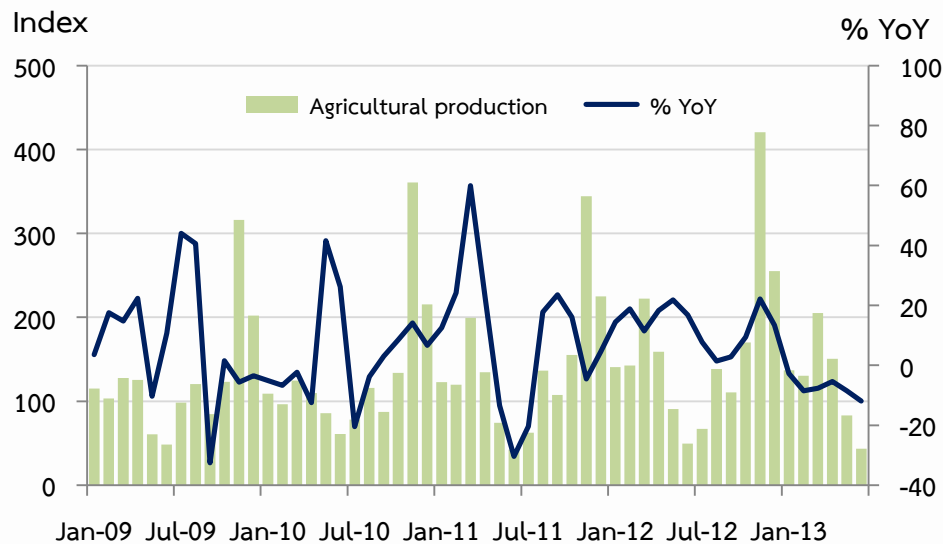
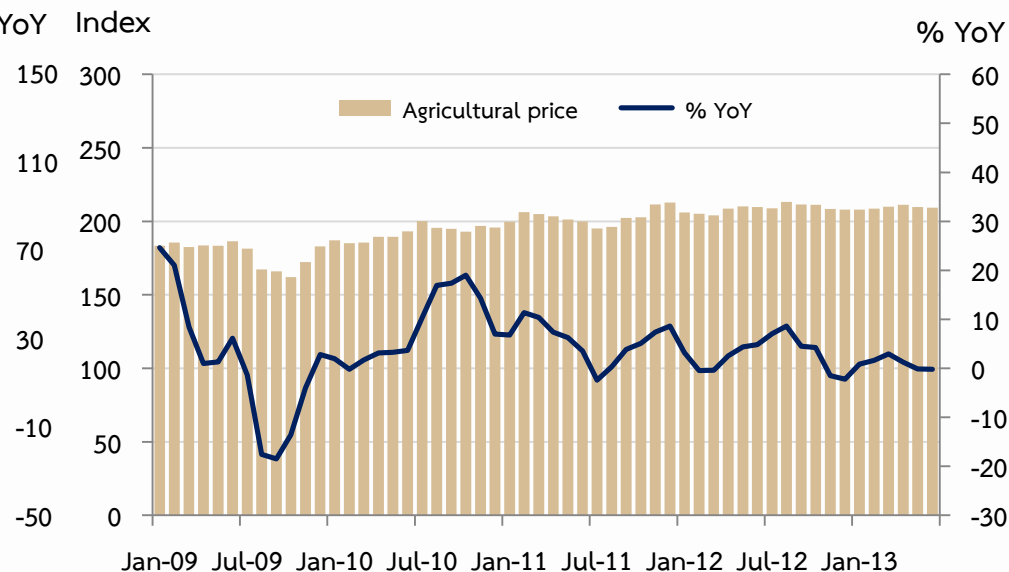
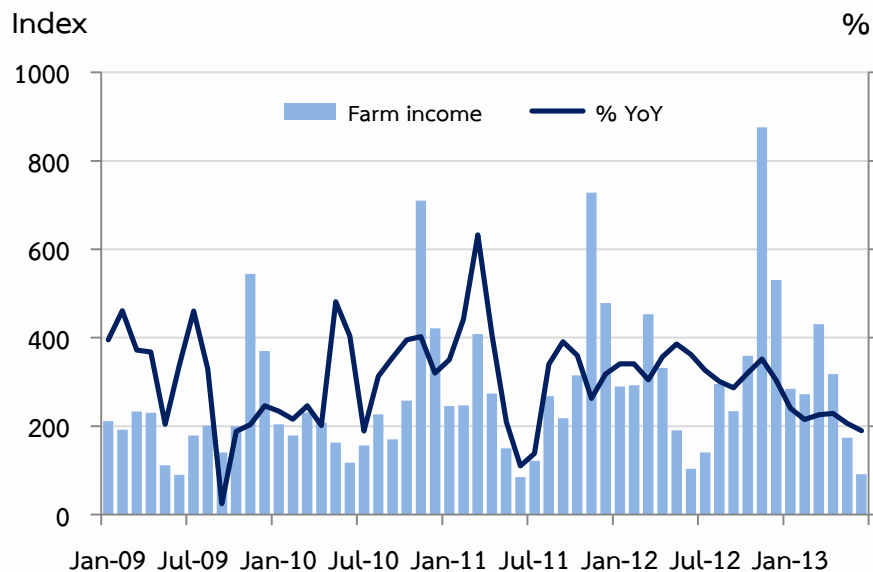




ธนาคารแห่งประเทศไทย
BANK OF THAILAND

The Northern Region' Economic Conditions in June 2013



% YoY	2012 ^R	2012		2013				
		H1	H2 ^R	H1	Q1 ^R	Q2	May ^R	Jun ^P
Farm Income	17.3	18.7	16.4	-5.9	-4.8	-7.2	-8.7	-12.1
Production	14.0	16.0	12.7	-6.8	-6.5	-7.4	-8.5	-11.9
Price	2.8	2.3	3.3	1.1	1.8	0.3	-0.1	-0.2

P = Preliminary data , R = Revised data

Note : 1. farm income includes cost of production.

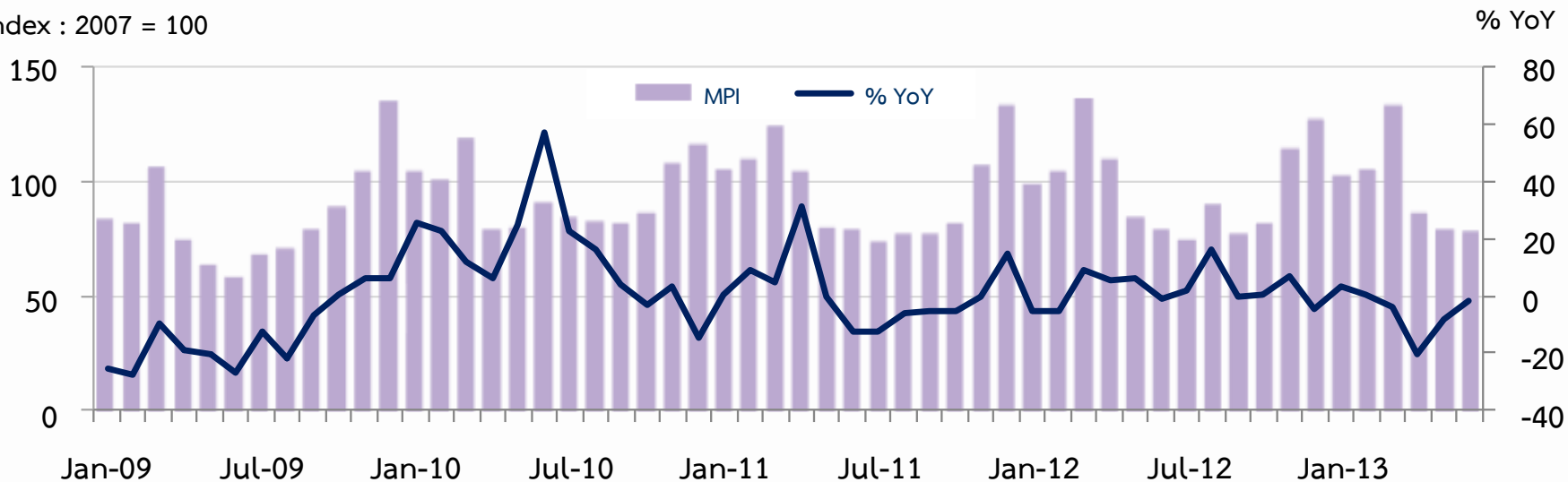
2. price excludes compensation and subsidies by government.



	2012	2012		2013				
		H1	H2	H1 ^P	Q1	Q2 ^P	May ^R	Jun ^P
MPI level	98.7	102.0	95.5	96.4	112.4	80.5	78.2	77.8
% YoY	3.6	2.5	5.8	-5.3	-0.6	-11.1	-8.0	-1.6
MPI level, SA	-	-	-	-	97.5	94.1	93.2	93.1
% MoM, % QoQ, SA	-	-	-	-	1.7	-5.4	3.2	-0.1

P = Preliminary data, R = Revised data

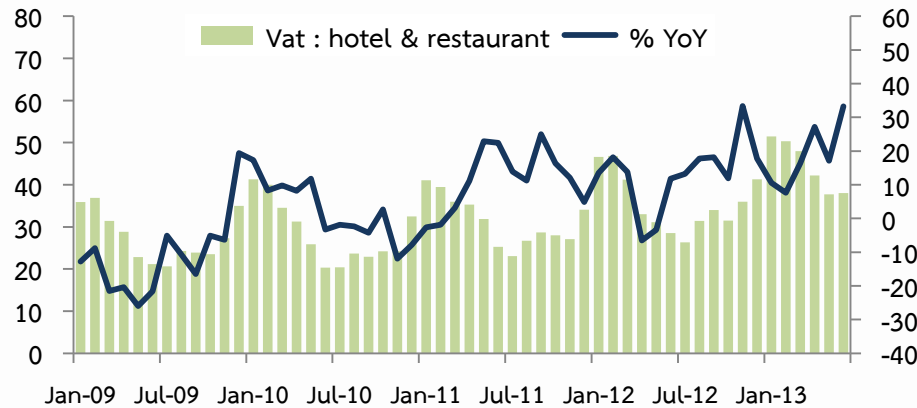
Index : 2007 = 100





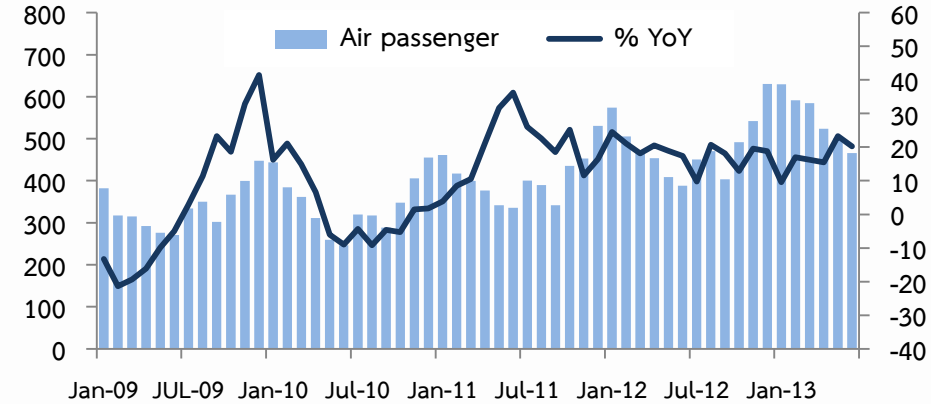
2012 ^R	2012		2013				
	H1	H2	H1	Q1	Q2	May ^R	Jun ^P
428.1	227.5	200.6	268.0	149.9	92.8	37.7	38.0
13.0%	8.4%	18.8%	17.8%	11.2%	27.3%	17.1%	33.3%

Million Baht

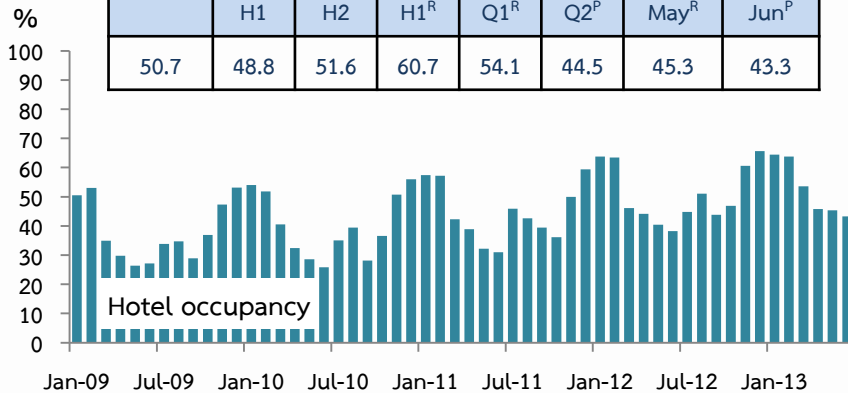


2012	2012		2013				
	H1	H2	H1	Q1	Q2	May	Jun
5,817.5	2,830.0	2,987.5	3,296.1	1,805.1	1,491.0	500.7	466.2
19.0%	21.6%	16.7%	16.5%	14.1%	19.5%	23.3%	20.2%

% YoY '000 persons

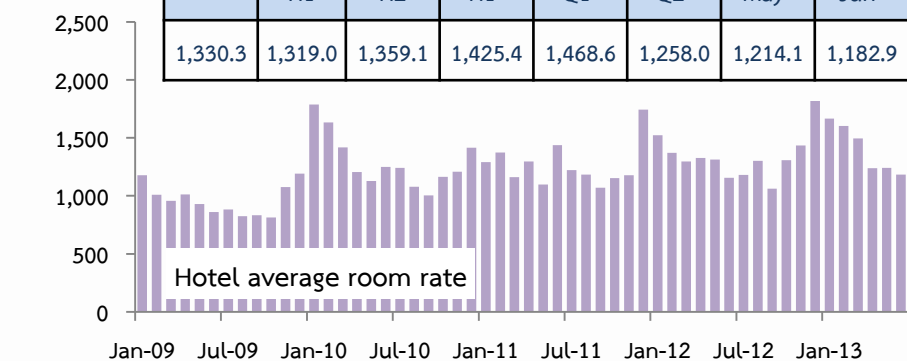


2012 ^R	2012		2013				
	H1	H2	H1 ^R	Q1 ^R	Q2 ^P	May ^R	Jun ^P
50.7	48.8	51.6	60.7	54.1	44.5	45.3	43.3



2012 ^R	2012		2013				
	H1	H2	H1 ^R	Q1 ^R	Q2 ^P	May ^R	Jun ^P
1,330.3	1,319.0	1,359.1	1,425.4	1,468.6	1,258.0	1,214.1	1,182.9

Baht/room

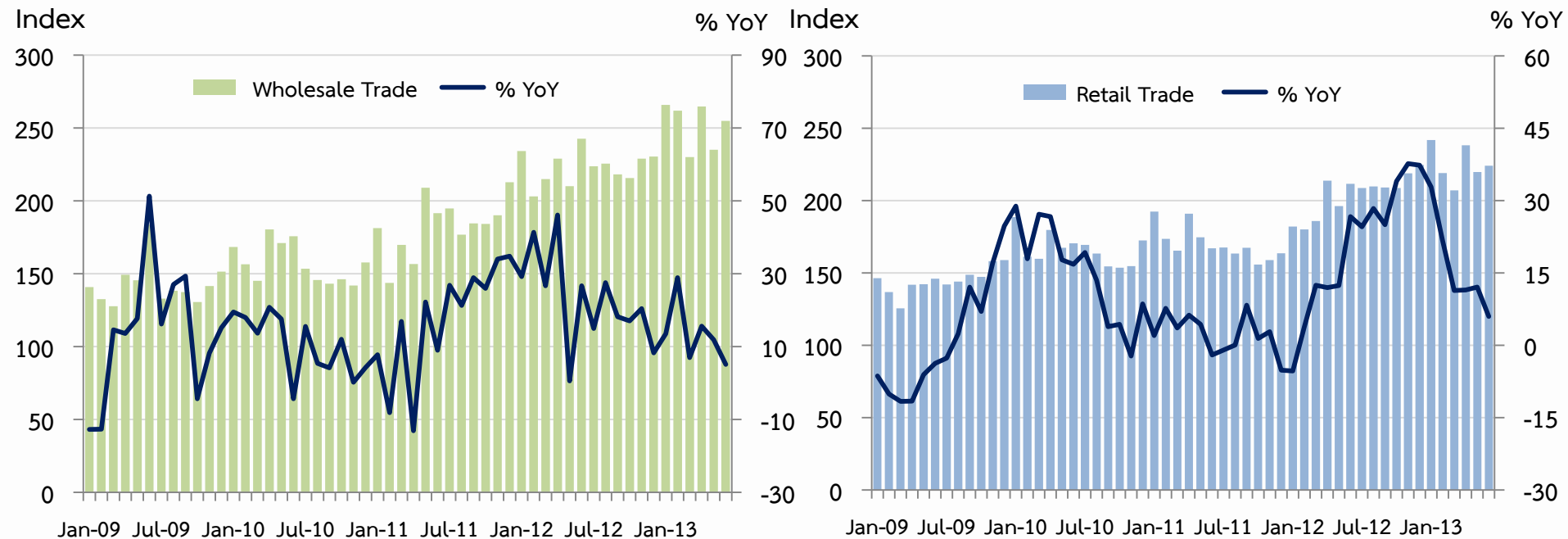


P = preliminary data, R = revised data



	2012	2012		2013				
		H1	H2	H1 ^P	Q1	Q2 ^P	May ^R	Jun ^P
Wholesale Trade	223.0	222.3	223.7	252.1	252.6	251.6	235.1	254.9
% YoY	21.9	26.8	17.4	13.4	16.2	10.7	11.9	5.1
Retail Trade	204.0	194.9	213.2	224.9	222.5	227.3	219.7	224.1
% YoY	20.0	9.9	31.0	15.4	21.9	9.8	12.0	5.9

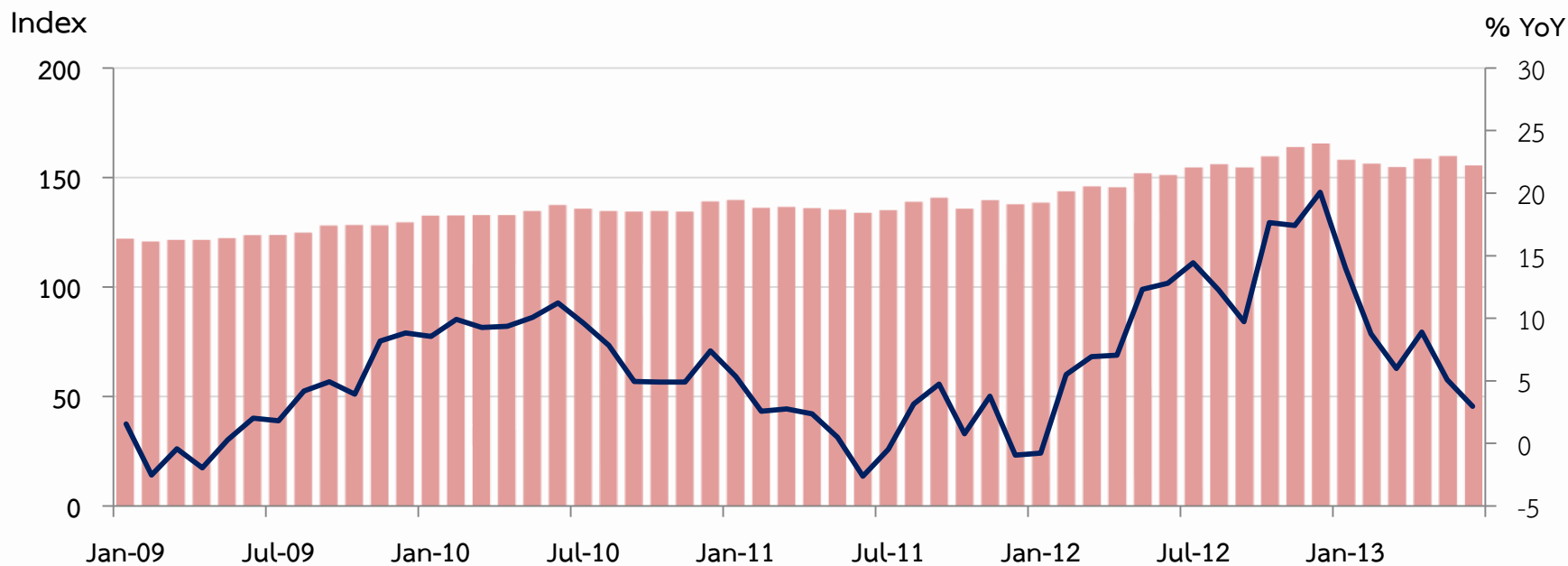
P = Preliminary data, R = Revised data





	2012	2012		2013				
		H1	H2	H1 ^P	Q1	Q2 ^P	May ^R	Jun ^P
PCI	151.8	145.4	158.2	156.4	155.6	157.1	158.9	154.8
% YoY	11.3	7.2	15.2	7.5	9.5	5.6	5.1	3.0
% MoM, % QoQ, SA		5.9	8.8	-1.2	-4.1	1.0	0.7	-2.6

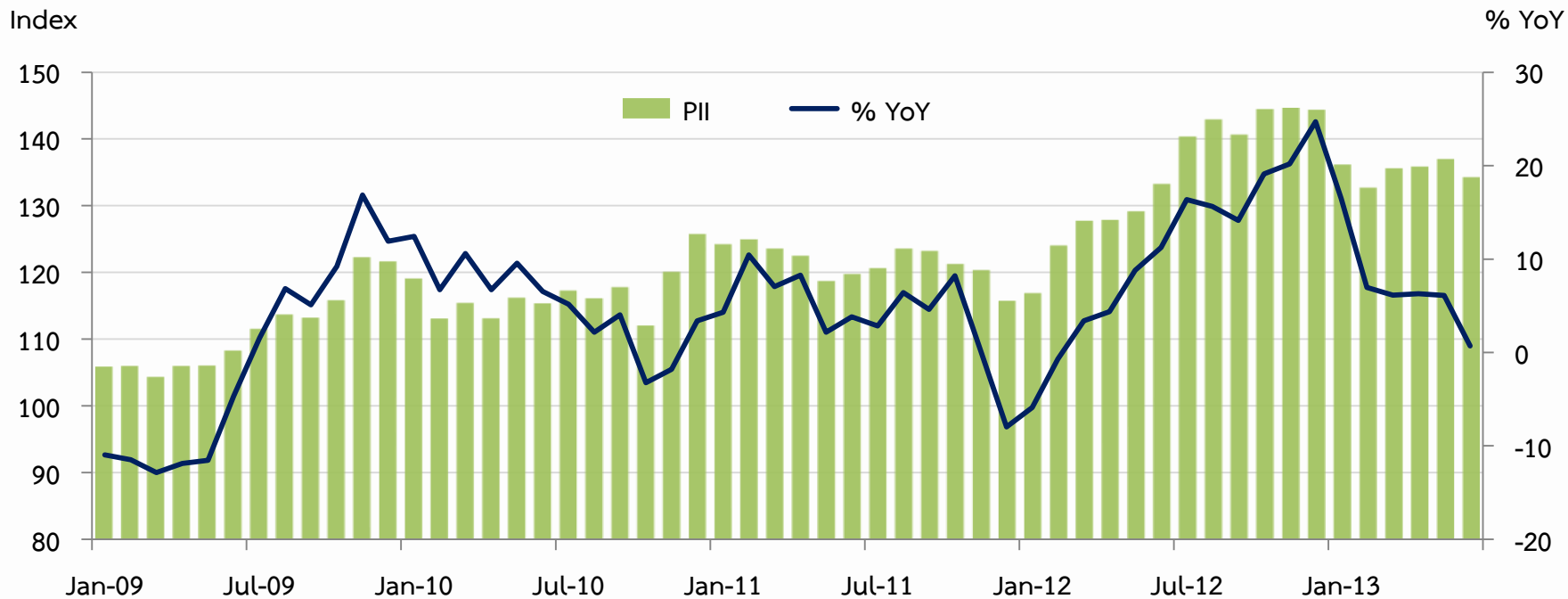
P = Preliminary data, R = Revised data





	2012	2012		2013				
		H1	H2	H1 ^P	Q1	Q2 ^P	May ^R	Jun ^P
PII	134.6	126.4	142.8	135.2	134.8	135.7	136.9	134.2
% YoY	10.8	3.4	18.3	6.9	9.7	4.3	6.1	0.7
% MoM, % QoQ	-	4.6	13.0	-5.3	-6.7	0.7	0.8	-2.0

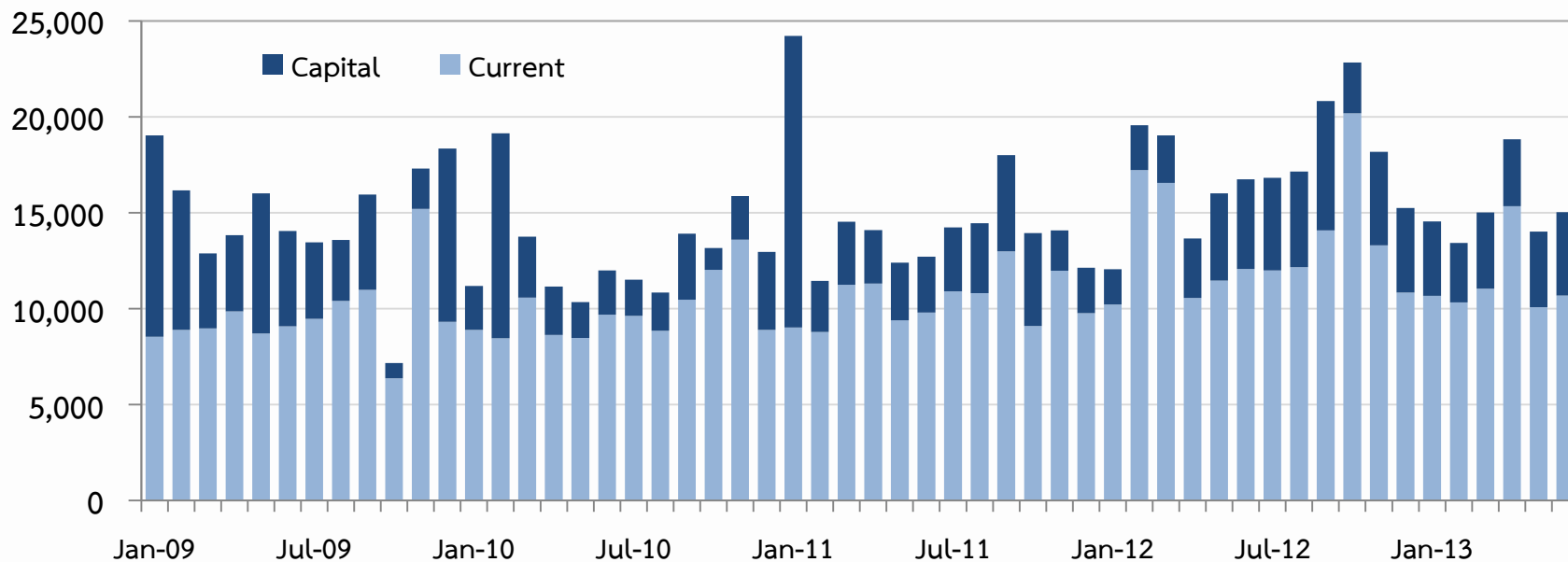
P = Preliminary data, R = Revised data





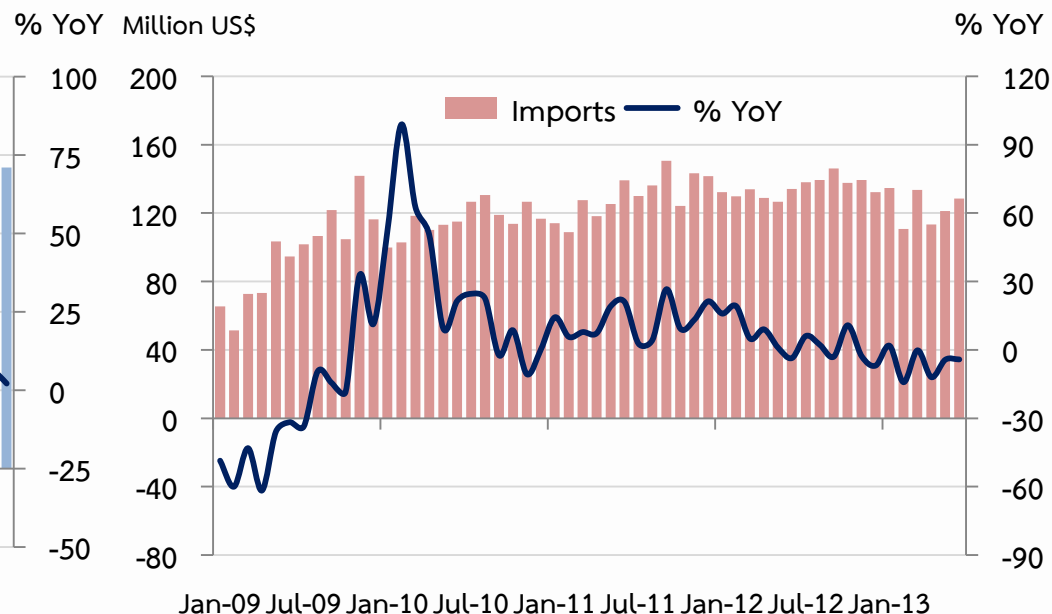
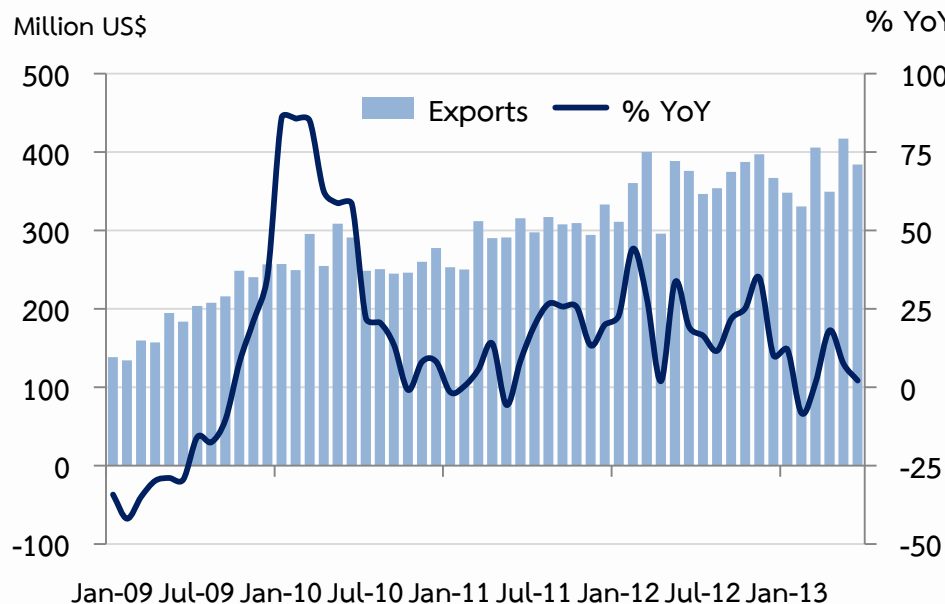
Expenditure	2012	2012		2013				
		H1	H2	H1	Q1	Q2	May	Jun
Current	160,593.6	78,068.8	82,524.8	68,132.3	32,034.6	36,097.7	10,074.3	10,684.9
% YoY	28.4	31.2	25.9	-12.7	-27.2	5.9	-12.1	-11.5
Capital	47,475.8	18,983.0	28,492.8	22,706.3	10,933.2	11,773.1	3,943.9	4,341.5
% YoY	-7.2	-36.5	33.8	19.6	64.1	-4.4	-13.3	-7.1
Total	208,069.4	97,051.8	111,017.6	90,838.6	42,967.8	47,870.8	14,018.2	15,026.4
% YoY	18.1	8.6	27.9	-6.4	-15.2	3.2	-12.4	-10.3

Million Baht



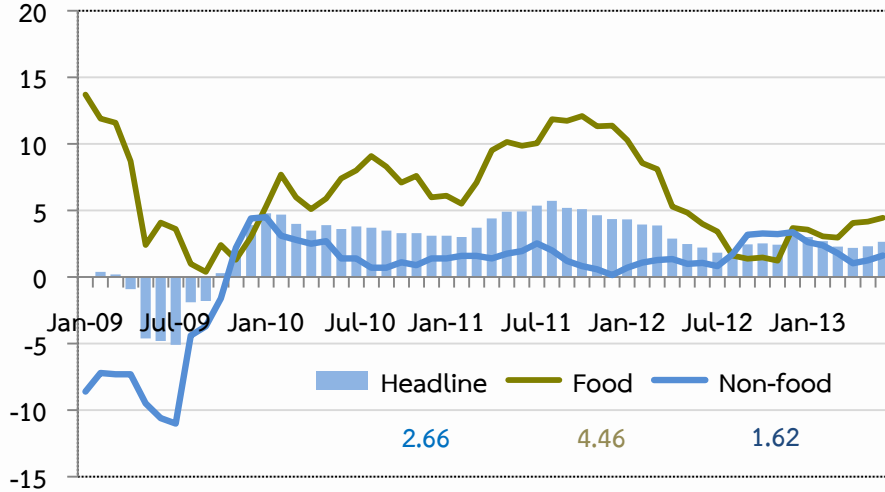


	2012	2012		2013				
		H1	H2	H1	Q1	Q2	May	Jun
EXPORTS	4,358.7	2,132.0	2,226.6	2,235.3	1,084.4	1,150.9	417.3	384.0
% YoY	23.2	24.5	19.8	4.8	1.2	8.5	7.4	2.1
IMPORTS	1,617.1	784.7	832.3	743.5	380.4	363.1	121.2	128.5
% YoY	3.7	7.0	0.7	-5.3	-3.7	-6.8	-4.3	-4.2



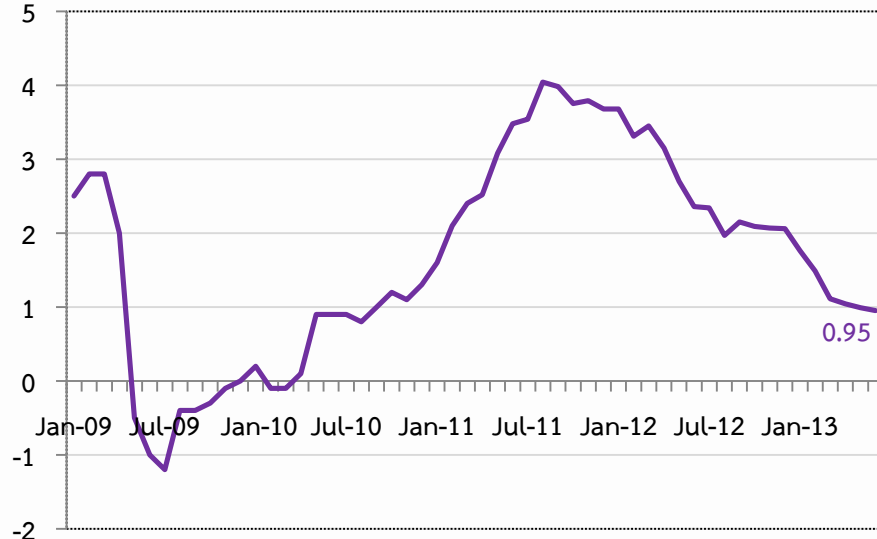


% YoY Headline Inflation

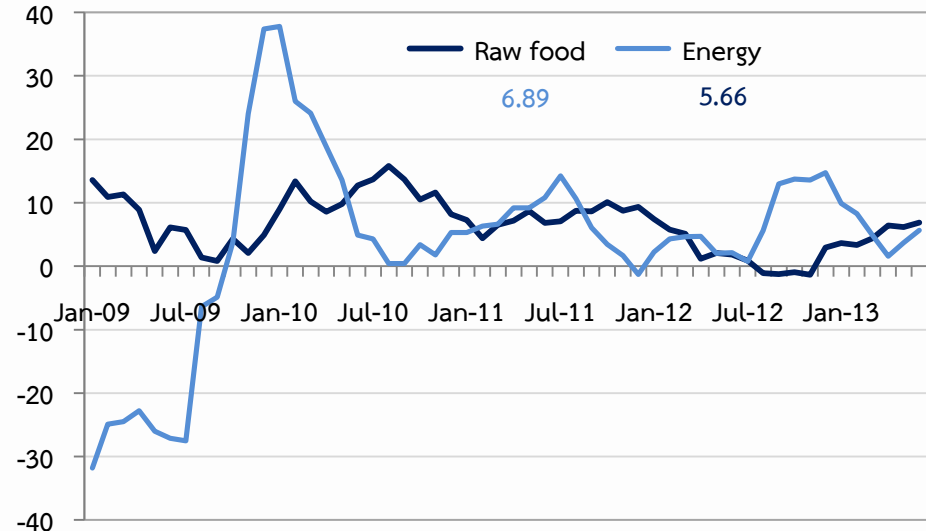


	2012	2012		2013				
		H1	H2	H1	Q1	Q2	May	Jun
Headline	2.83	3.28	2.40	2.53	2.66	2.39	2.32	2.66
Food	4.38	6.78	2.12	3.72	3.21	4.24	4.17	4.46
Non-food	1.83	1.08	2.58	1.78	2.27	1.31	1.25	1.62
Core	2.60	3.10	2.11	1.22	1.45	0.99	0.99	0.95

% YoY Core Inflation



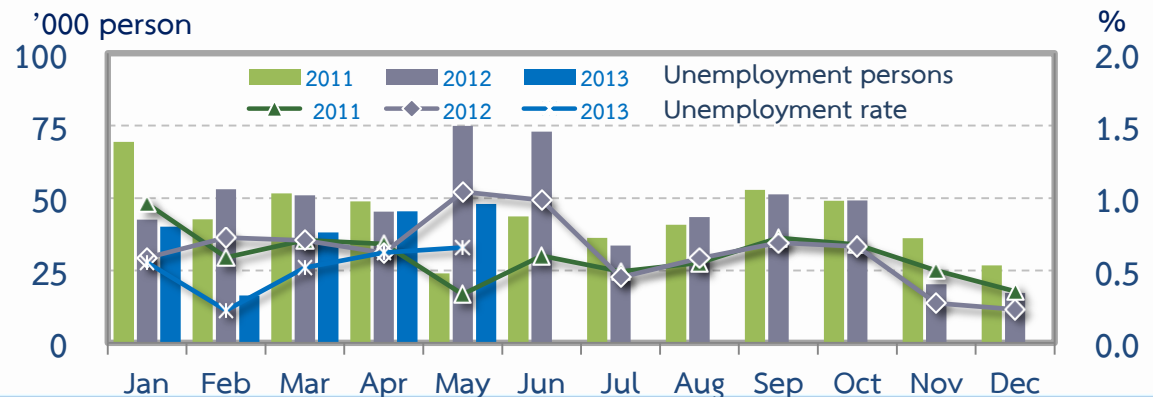
% YoY Raw Food and Energy





%	% of Total Labor Force (as of May 2013)	2012	2012			2013		
			H1	Q3	Q4	Q1	Apr	May
Labor Force (1,000 Persons)	100.0	7,341	7,261	7,430	7,414	7,280	7,296	7,276
Employed persons	98.8	0.8	0.1	1.2	1.4	0.7	-0.1	2.1
Agriculture	48.3	4.0	3.3	5.0	4.4	0.7	-3.3	2.8
Non-agriculture	50.5	-2.3	-2.6	-2.5	-1.5	0.7	2.6	1.5
Manufacturing	9.8	0.0	-1.1	-0.5	3.0	5.0	1.1	20.0
Construction	7.6	7.2	2.1	9.0	18.5	5.0	2.4	-6.8
Wholesale & retail trade	13.4	4.0	-3.3	-3.9	-5.4	-2.3	6.3	-5.5
Hotel & restaurants Services	3.9	-8.0	-7.6	-14.7	-1.4	-6.9	13.7	-11.2
Others	15.8	-4.9	-3.7	-2.7	-8.3	-0.5	-2.4	6.1
Unemployed persons	0.7	5.6	21.5	-7.7	-21.5	-36.9	0.2	-36.1
Seasonally inactive persons	0.6	5.1	76.0	-60.9	-81.1	10.4	8.6	-44.0

Unemployment	May-12	May-13
In thousand persons	74.9	47.9
Rate (%)	1.0	0.7



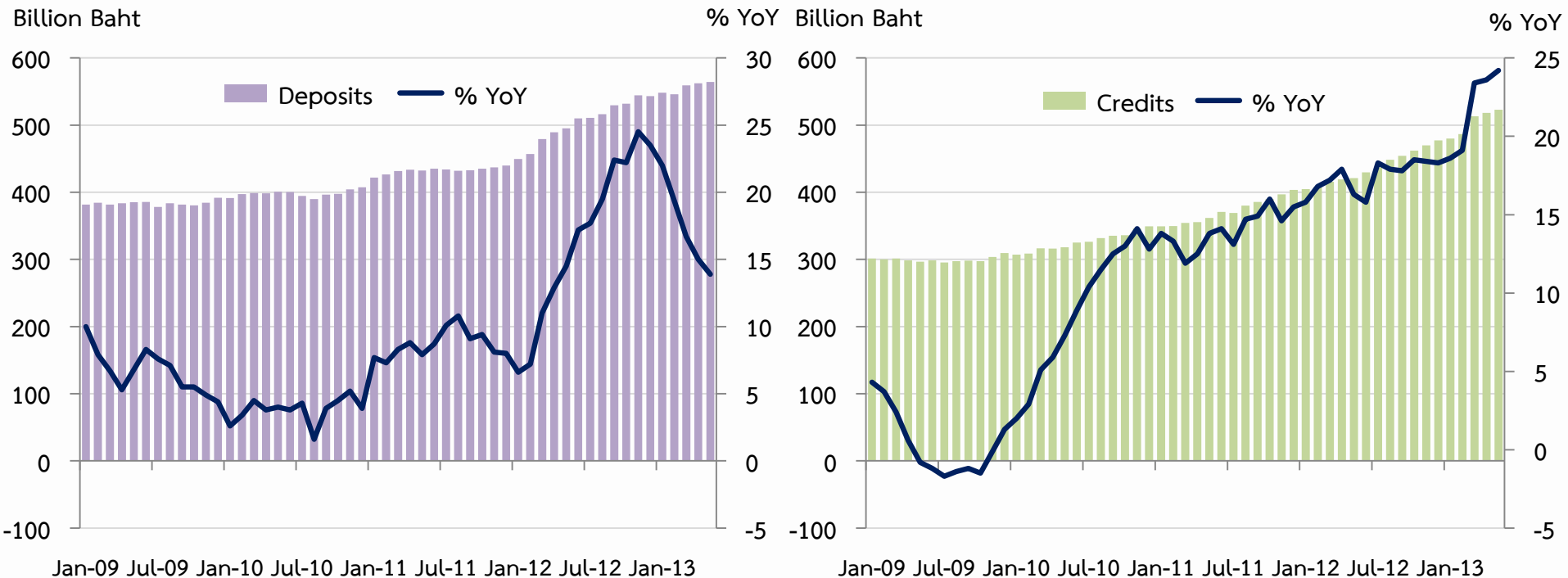


Commercial Bank's Deposits

	2012	2012			2013		
		H1	Q3	Q4	Q1	Apr	May
Deposits	543.0	510.1	529.6	543.0	559.2	562.5	564.2
% YoY	23.5	17.2	22.4	23.5	16.7	15.0	13.9

Commercial Bank's Credits

	2012	2012			2013		
		H1	Q3	Q4	Q1	Apr	May
Credits	477.1	429.6	454.2	477.1	513.0*	518.2*	522.9*
% YoY	18.3	15.8	17.8	18.3	23.4	23.6	24.2



*include an adjustment of 14,059 million Baht credit from head office's accounts to the Northern region's accounts, if excluded, in May 20.9 percent of credit growth was noted