

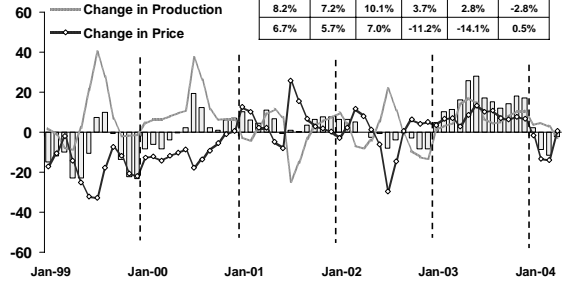
*Press Release on
Northern Region Economic Conditions in
April 2004*

Northern Region Office, Bank of Thailand

**CHANGE IN AGRICULTURAL PRODUCTION
(major crops)**

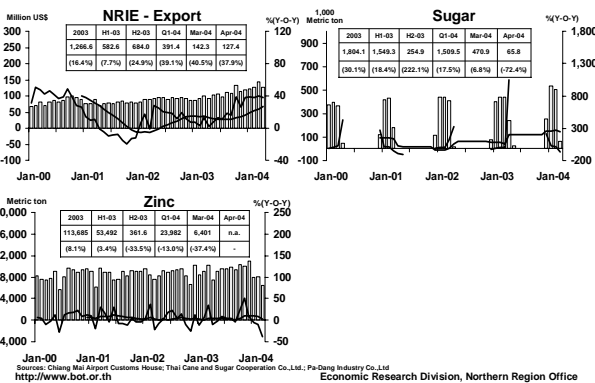
weight 16% of Northern GRP

	2003		2004			
	H1	Q4	Q1	Mar		
Change in Farm Income	14.9%	12.9%	17.1%	-7.5%	-11.3%	-2.3%
Change in Production	8.2%	7.2%	10.1%	3.7%	2.8%	-2.8%
Change in Price	6.7%	5.7%	7.0%	-11.2%	-14.1%	0.5%



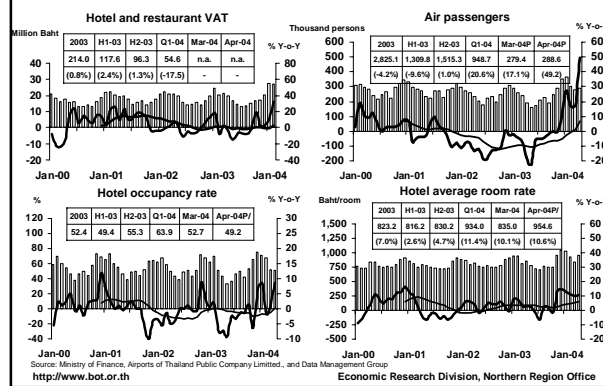
Index constructed using data from Ministry of Agriculture and Co-operatives, (1988=100)
http://www.bot.or.th Economic Research Division, Northern Region Office

MANUFACTURING



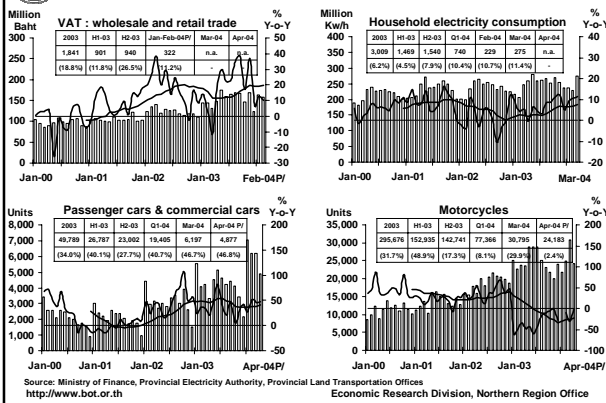
Jan-00 Jan-01 Jan-02 Jan-03 Jan-04
Sources: Chiang Mai Airport Customs House, Thai Cane and Sugar Cooperation Co., Ltd., Pa-Dang Industry Co., Ltd.
http://www.bot.or.th Economic Research Division, Northern Region Office

SERVICES (weight 19% of Northern GRP)



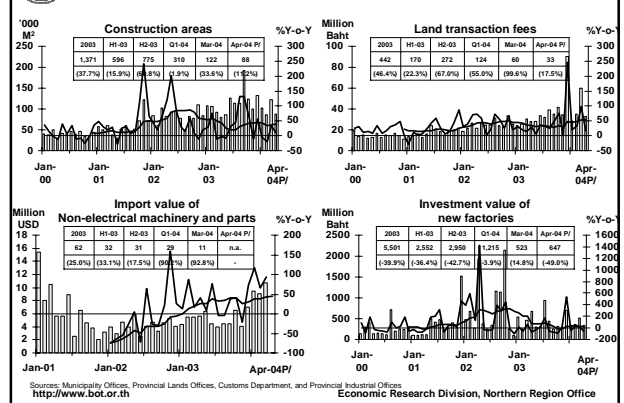
Jan-00 Jan-01 Jan-02 Jan-03 Jan-04
Sources: Ministry of Finance, Airports of Thailand Public Company Limited., and Data Management Group
http://www.bot.or.th Economic Research Division, Northern Region Office

PRIVATE CONSUMPTION INDICATORS



Jan-00 Jan-01 Jan-02 Jan-03 Apr-04P
Source: Ministry of Finance, Provincial Electricity Authority, Provincial Land Transportation Offices
http://www.bot.or.th Economic Research Division, Northern Region Office

PRIVATE INVESTMENT



Jan-00 Jan-01 Jan-02 Jan-03 Apr-04P
Sources: Municipality Offices, Provincial Lands Offices, Customs Department, and Provincial Industrial Offices
http://www.bot.or.th Economic Research Division, Northern Region Office

