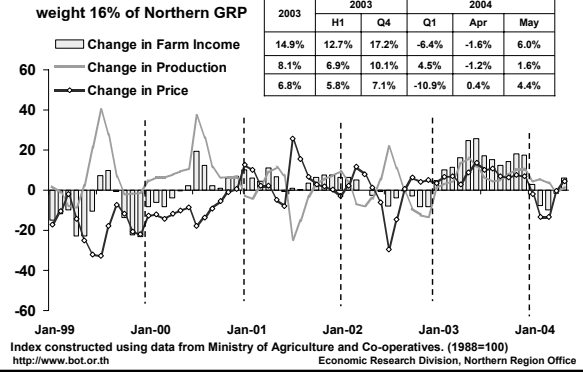


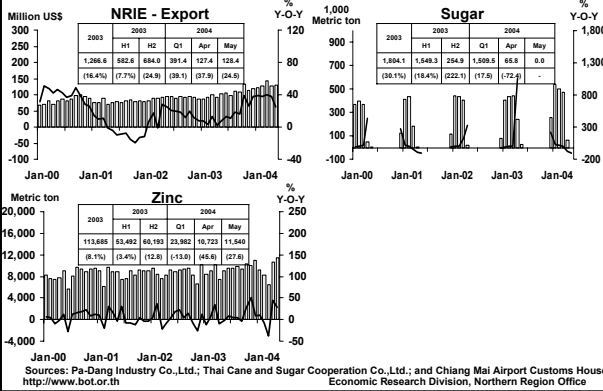
Press Release on Northern Region Economic Conditions in May 2004

Northern Region Office, Bank of Thailand

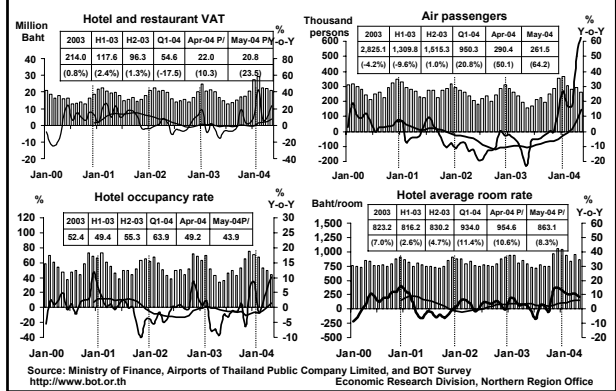
CHANGE IN AGRICULTURAL PRODUCTION (major crops)



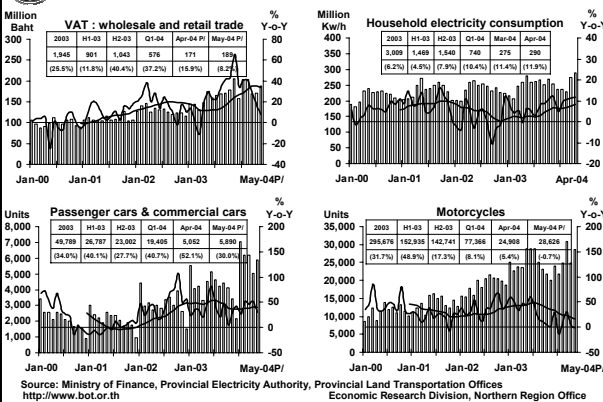
MANUFACTURING



SERVICES (weight 18% of Northern GRP)



PRIVATE CONSUMPTION



PRIVATE INVESTMENT

