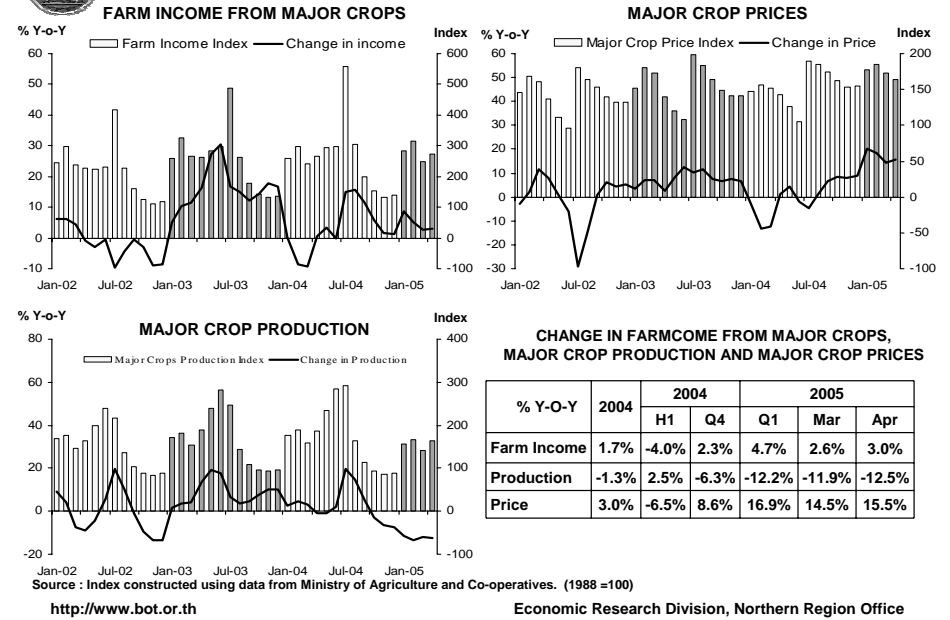


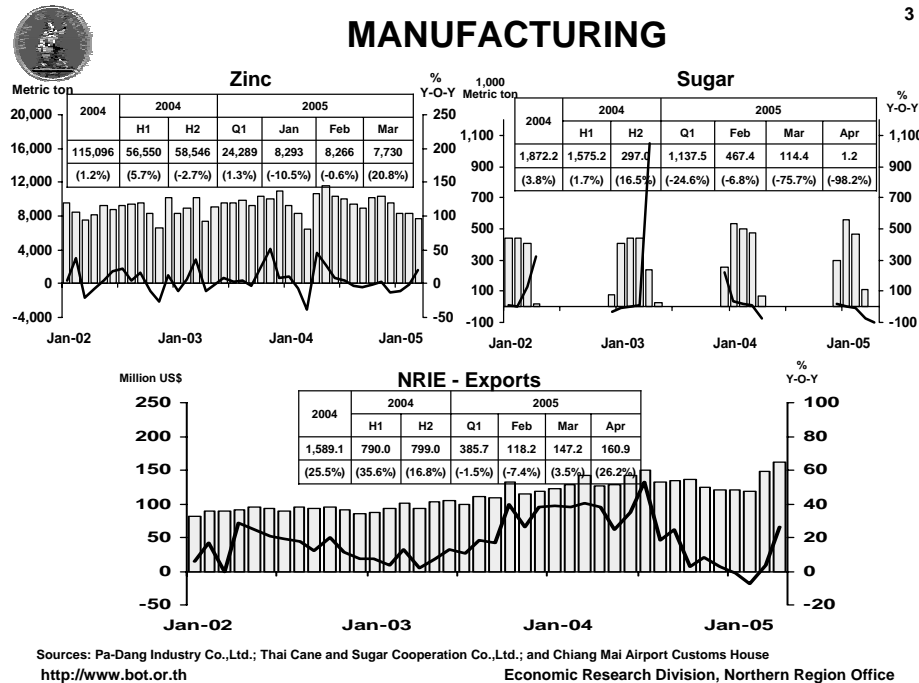
*Press Release on
Northern Region Economic Conditions in April 2005*

Northern Region Office, Bank of Thailand

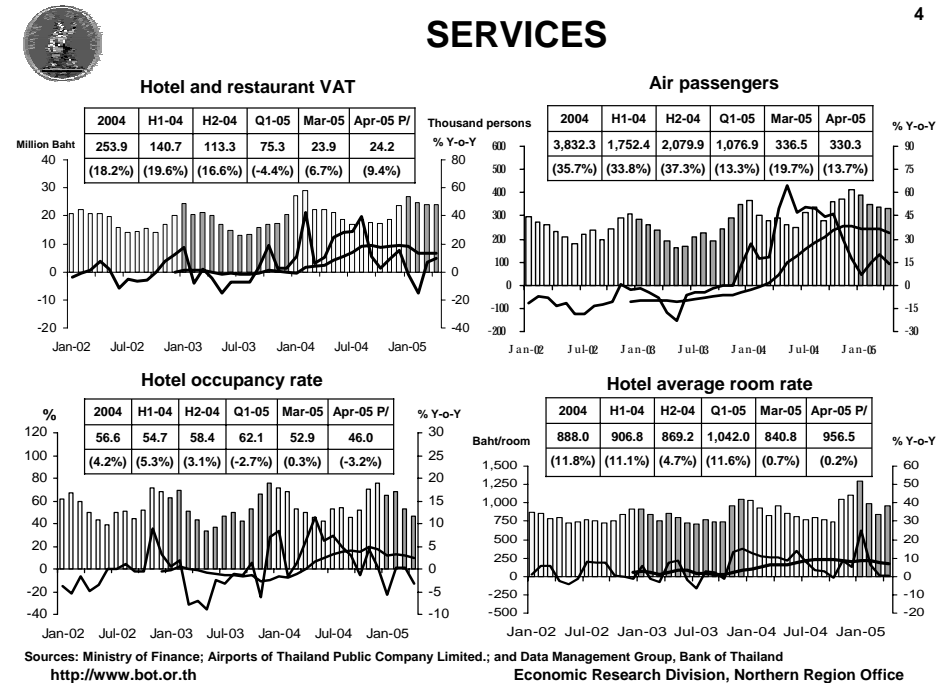
FARM INCOME FROM MAJOR CROPS



MANUFACTURING



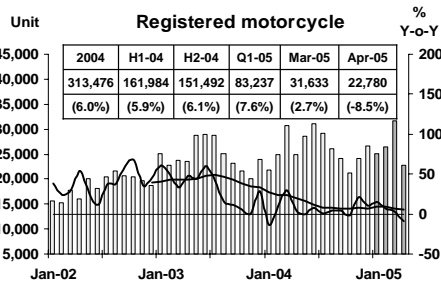
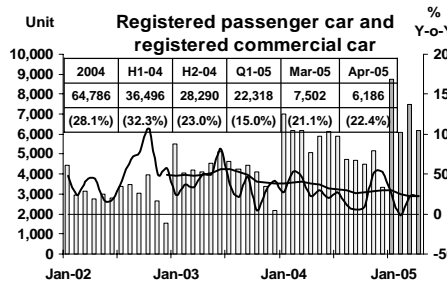
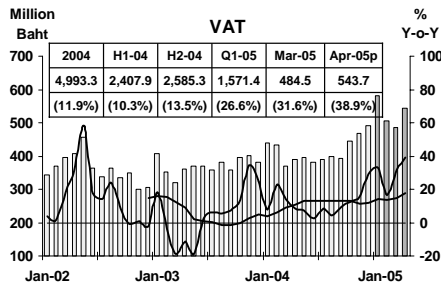
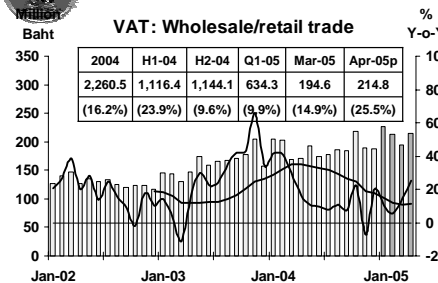
SERVICES





PRIVATE CONSUMPTION

5



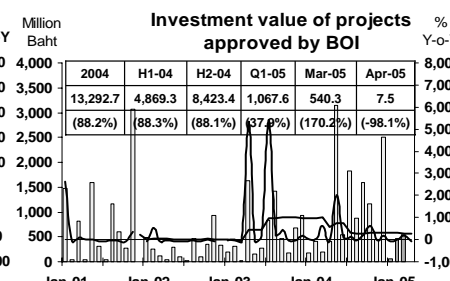
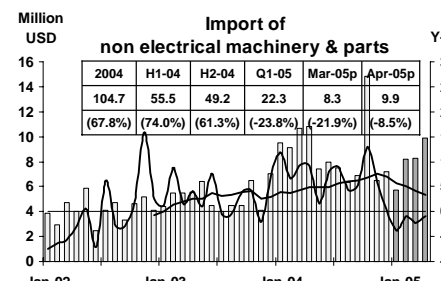
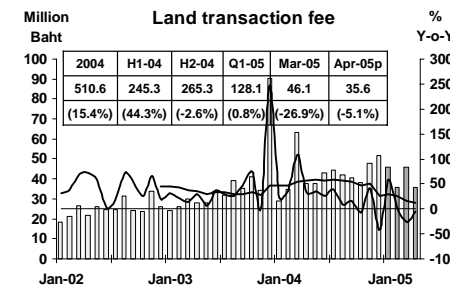
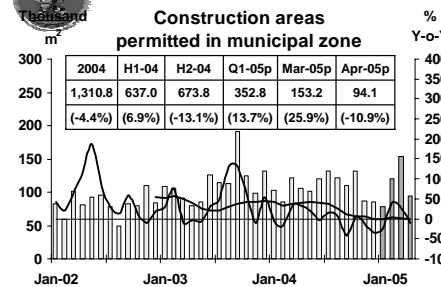
Sources: Ministry of Finance, Provincial Land Transportation Offices <http://www.bot.or.th>

Economic Research Division, Northern Region Office



PRIVATE INVESTMENT

6



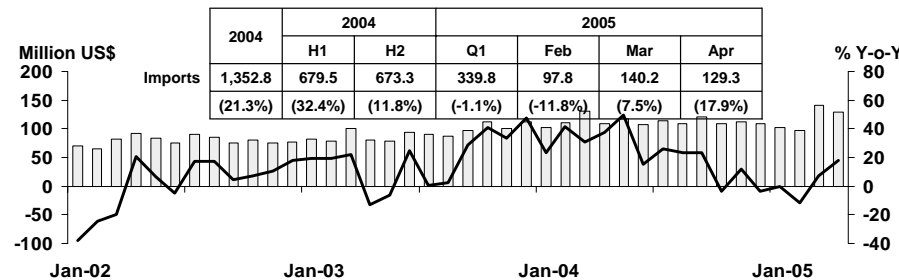
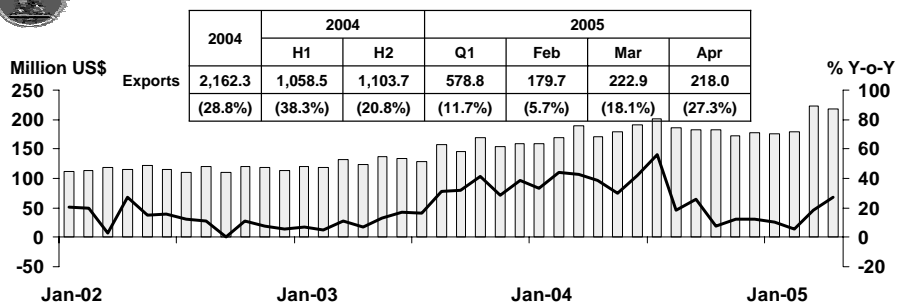
Sources: Municipality Offices; Provincial Land Offices; Customs Department; Northern Region Investment and Economic Center (BOI) <http://www.bot.or.th>

Economic Research Division, Northern Region Office



FOREIGN TRADE

7



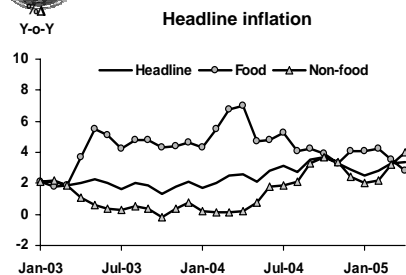
Source: Customs Department <http://www.bot.or.th>

Economic Research Division, Northern Region Office



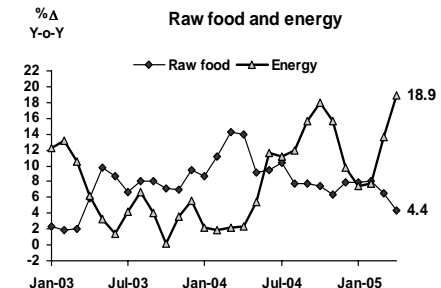
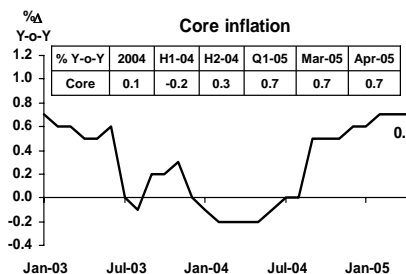
PRICE LEVEL

8



Headline inflation (2002 = 100)

| %Δ Y-o-Y | 2004 | H1-04 | H2-04 | Q1-05 | Mar-05 | Apr-05 |
|----------|------|-------|-------|-------|--------|--------|
| Headline | 2.8 | 2.3 | 3.2 | 2.9 | 3.3 | 3.4 |
| Food | 4.8 | 5.5 | 4.1 | 3.9 | 3.5 | 2.8 |
| Non-food | 1.7 | 0.5 | 2.8 | 2.4 | 3.2 | 4.0 |



Source: Bureau of Trade and Economic Indices, Ministry of Commerce, Note: Northern region's Core CPI data has been released since January 2002 <http://www.bot.or.th>

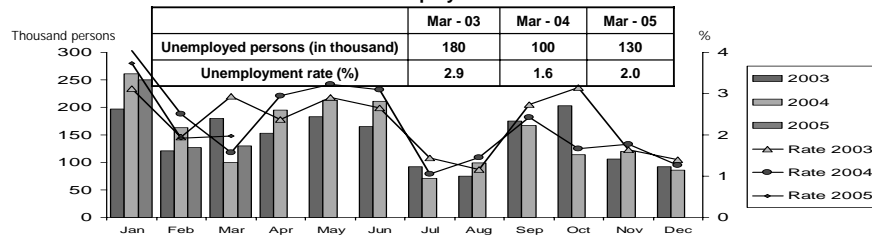
Economic Research Division, Northern Region Office

LABOR FORCE SURVEY

9

| | % of Total Labour Force (as of Mar 2005) | 2003 (Δ %) | 2004 (Δ %) | H1-04 (Δ %) | H2-04 (Δ %) | Feb-05 (Δ %) | Mar-05 (Δ %) |
|-------------------------------------|--|--------------|--------------|--------------|--------------|--------------|--------------|
| Labour Force (1,000 Persons) | 100.0 | 6,563 | 6,787 | 6,849 | 6,787 | 6,630 | 6,629 |
| Employed persons | 96.5 | 3.0 | 3.6 | 10.2 | 3.6 | 3.1 | 3.9 |
| • Agriculture | 42.4 | -3.8 | -3.8 | 11.7 | -3.8 | -3.9 | 2.7 |
| • Non-agriculture | 54.2 | 13.3 | 13.0 | 8.6 | 13.0 | 9.1 | 4.8 |
| - Wholesale & retail trade | 13.9 | -0.7 | 26.2 | 27.3 | 26.2 | 4.6 | 4.6 |
| - Manufacturing | 12.9 | 22.5 | 16.6 | 32.5 | 16.6 | 4.2 | 20.1 |
| - Construction | 8.2 | 25.3 | 4.5 | -20.2 | 4.5 | 14.5 | -15.1 |
| - Hotel & restaurants Services | 5.3 | 15.9 | -2.5 | -27.7 | -2.5 | 1.3 | 10.7 |
| - Others | 13.9 | 15.5 | 8.8 | 0.9 | 8.8 | 17.9 | 5.1 |
| Unemployed persons | 2.0 | -7.2 | -6.5 | 28.2 | -6.5 | -22.0 | 30.9 |
| Seasonally inactive persons | 1.5 | 180.6 | -4.0 | -72.0 | -4.0 | -40.5 | 16.2 |

Unemployment



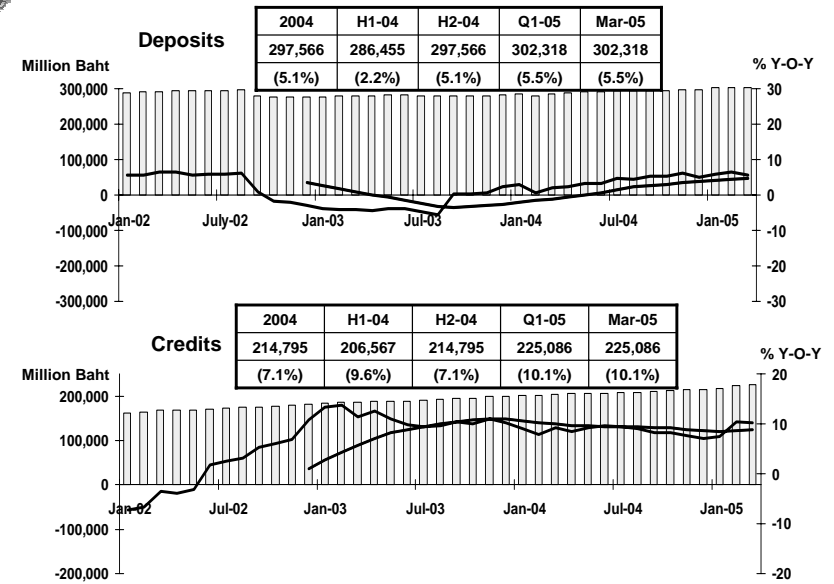
Source: National Statistical Office

<http://www.bot.or.th>

Economic Research Division, Northern Region Office

DEPOSITS AND CREDITS OF COMMERCIAL BANKS

10



Source: Bank of Thailand

<http://www.bot.or.th>

Economic Research Division, Northern Region Office