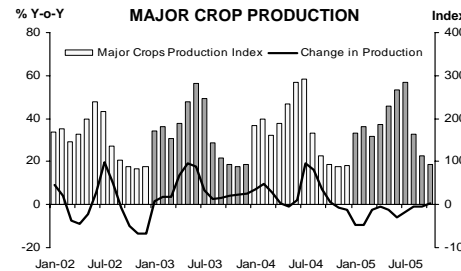
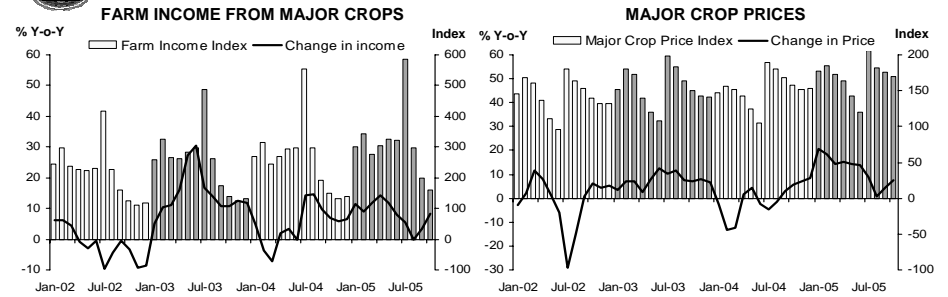


# Press Release on Northern Region Economic Conditions in October 2005

Bank of Thailand, Northern Region Office

## FARM INCOME FROM MAJOR CROPS



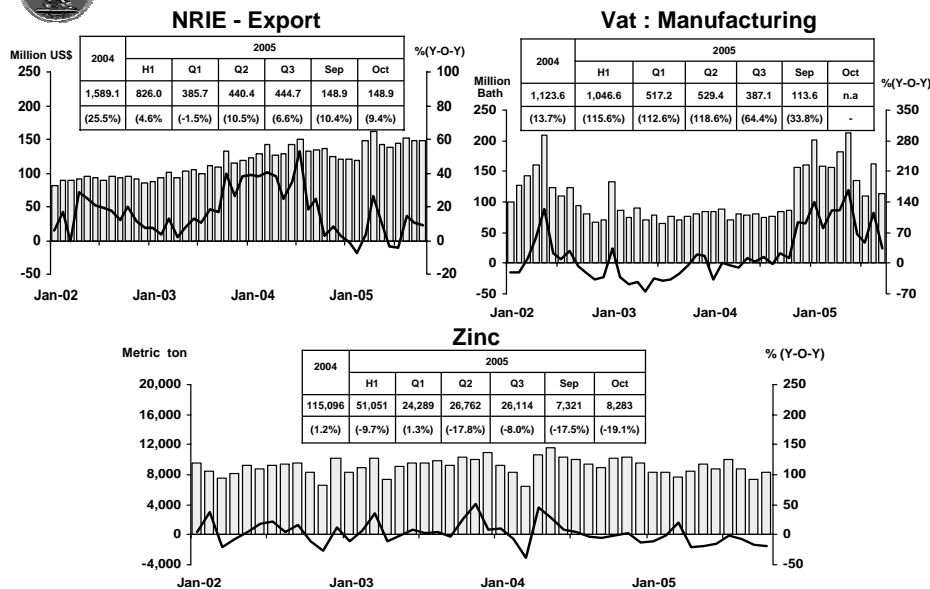
CHANGE IN FARMCOME FROM MAJOR CROPS, MAJOR CROP PRODUCTION AND MAJOR CROP PRICES

△ % (Y-O-Y)	2004	2005					
		H1	Q1	Q2	Q3	Sep	Oct
Farm Income	4.2%	11.7%	10.9%	13.0%	2.7%	3.4%	8.2%
Production	2.2%	-4.3%	-5.9%	-1.8%	-1.0%	-1.1%	0.5%
Price	2.0%	16.0%	16.8%	14.8%	3.7%	4.5%	7.7%

Source : Index constructed using data from Ministry of Agriculture and Co-operatives. (1988 =100)

Economic Research Division, Northern Region Office

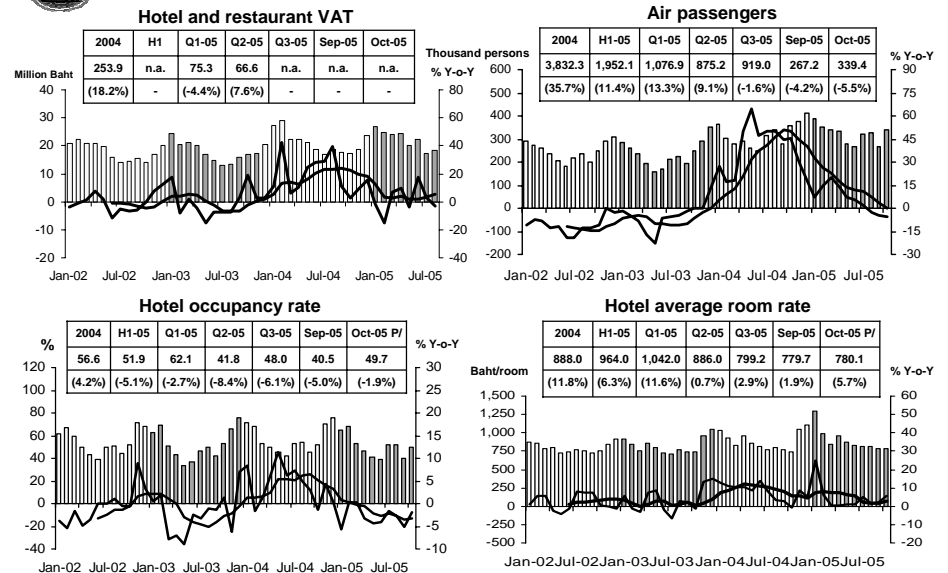
## MANUFACTURING



Sources: Pa-Dang Industry Co.,Ltd. ; Thai Cane and Sugar Cooperation Co.,Ltd.; and Chiang Mai Airport Customs House

Economic Research Division, Northern Region Office

## SERVICES



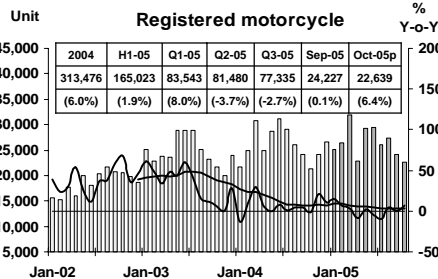
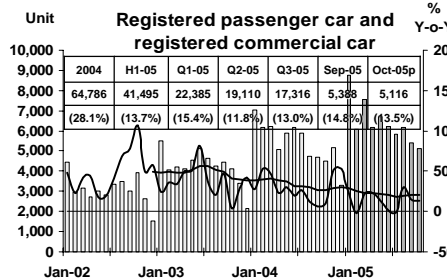
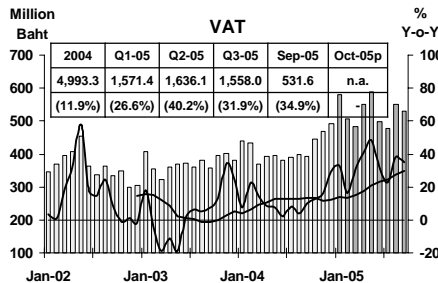
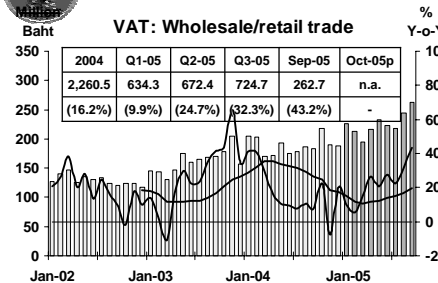
Source: Ministry of Finance; Airports of Thailand Public Company Limited.; and Data Management Group, Bank of Thailand

Economic Research Division, Northern Region Office



# PRIVATE CONSUMPTION

5



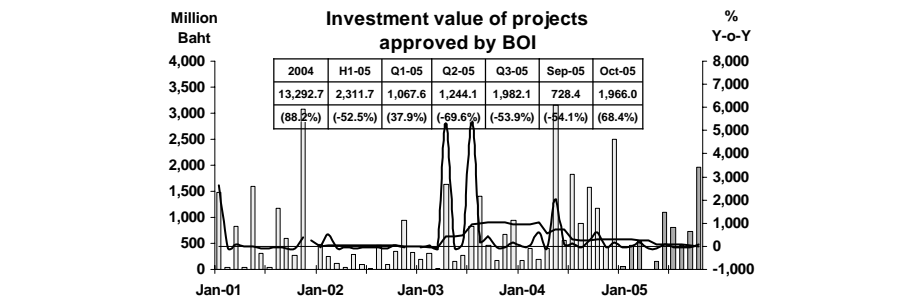
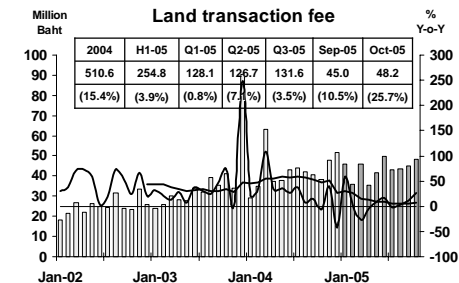
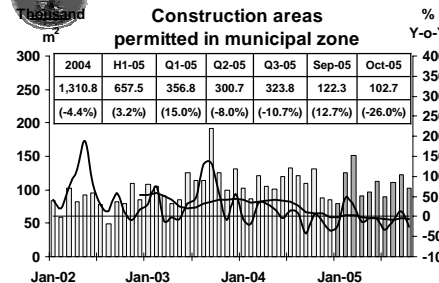
Sources: Ministry of Finance, Provincial Land Transportation Offices

Economic Research Division, Northern Region Office



# PRIVATE INVESTMENT

6



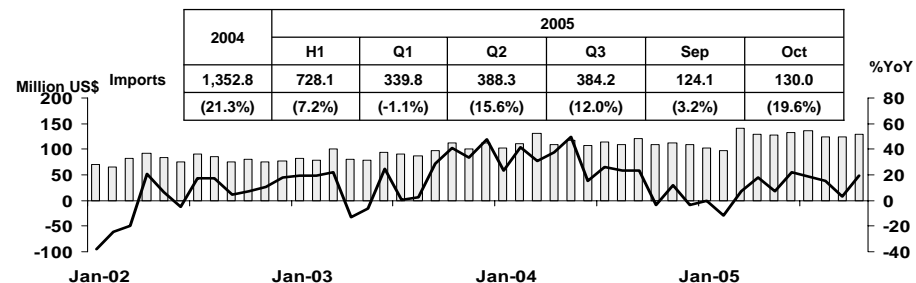
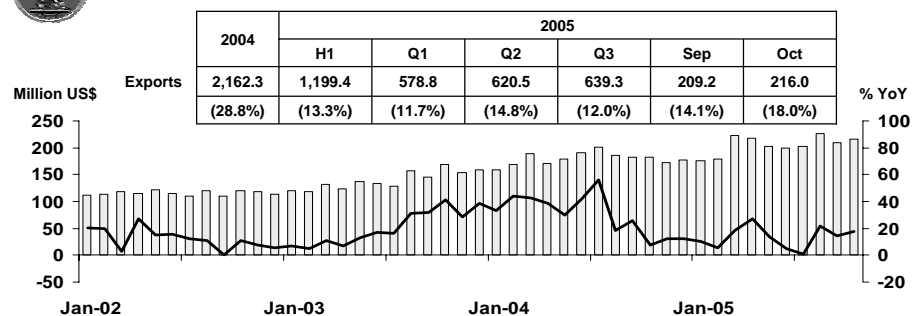
Sources: Municipality Offices; Provincial Land Offices; Customs Department; Northern Region Investment and Economic Center (BOI)

Economic Research Division, Northern Region Office



# FOREIGN TRADE

7

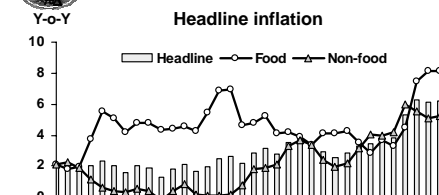


Economic Research Division, Northern Region Office



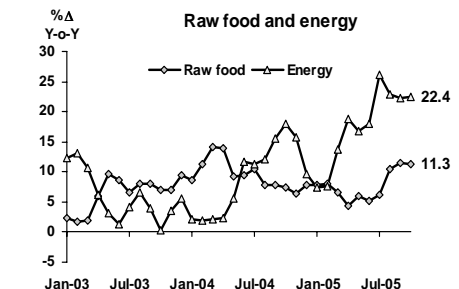
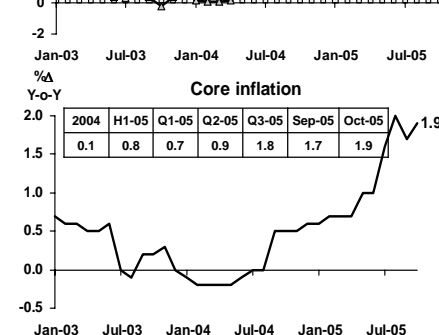
# PRICE LEVEL

8



### Headline inflation (2002 = 100)

%ΔY-o-Y	2004	H1-05	Q1-05	Q2-05	Q3-05	Sep-05	Oct-05
Headline	2.8	3.3	2.9	3.7	5.9	6.1	6.2
Food	4.8	3.6	3.9	3.2	6.7	8.1	8.1
Non-food	1.7	3.3	2.4	4.1	5.5	5.1	5.2



Source: Bureau of Trade and Economic Indices, Ministry of Commerce  
Note: Northern region's Core CPI data has been released since January 2002

Economic Research Division, Northern Region Office

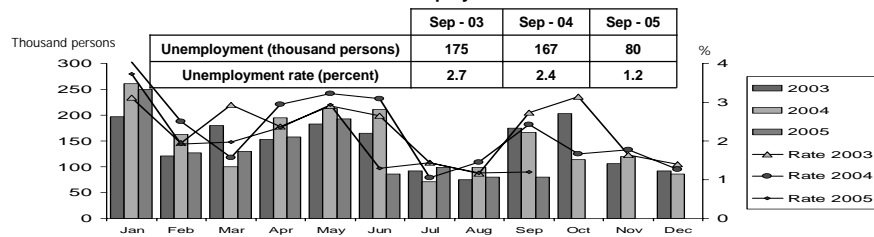


## LABOR FORCE SURVEY

9

	% of Total Labor Force (as of Sep 2005)	2004 (Δ %)	Q1-05 (Δ %)	Q2-05 (Δ %)	Aug-05 (Δ %)	Sep-05 (Δ %)
<b>Labor Force (1,000 Persons)</b>	<b>100.0</b>	<b>6,787</b>	<b>6,629</b>	<b>6,638</b>	<b>6,761</b>	<b>6,660</b>
<b>Employed persons</b>	<b>98.6</b>	<b>3.6</b>	<b>3.9</b>	<b>-1.6</b>	<b>-1.3</b>	<b>-2.3</b>
• Agriculture	50.9	-3.8	2.7	-6.9	-1.6	-0.2
• Non-agriculture	47.7	13.0	4.8	4.1	-0.8	-4.4
- Wholesale & retail trade	13.0	26.2	4.6	-7.5	-2.3	-5.6
- Manufacturing	10.5	16.6	20.1	-14.7	0.4	-15.3
- Construction	6.2	4.5	-15.1	34.1	2.9	-9.3
- Hotel & restaurants Services	5.6	-2.5	10.7	83.4	-6.9	28.5
- Others	12.4	8.8	5.1	4.2	0.8	-1.1
<b>Unemployed persons</b>	<b>1.2</b>	<b>-6.5</b>	<b>30.9</b>	<b>-59.3</b>	<b>-19.8</b>	<b>-52.1</b>
<b>Seasonally inactive persons</b>	<b>0.2</b>	<b>-4.0</b>	<b>16.2</b>	<b>156.9</b>	<b>655.4</b>	<b>91.7</b>

### Unemployment



Economic Research Division, Northern Region Office

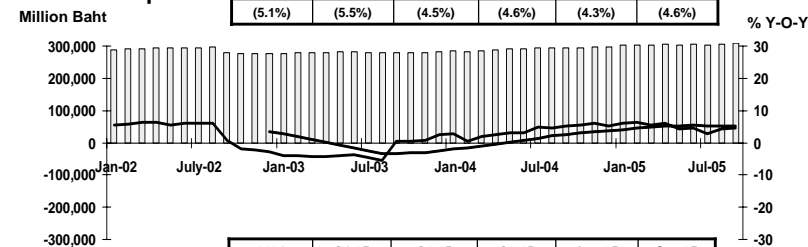


## DEPOSITS AND CREDITS OF COMMERCIAL BANKS

10

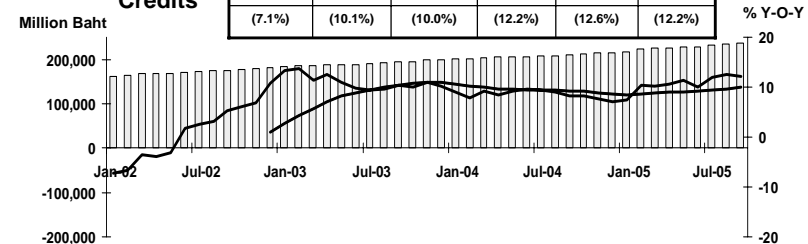
2004	Q1-05	Q2-05	Q3-05	Aug-05	Sep-05
297,566	302,318	304,834	308,853	305,277	308,853
(5.1%)	(5.5%)	(4.5%)	(4.6%)	(4.3%)	(4.6%)

### Deposits



2004	Q1-05	Q2-05	Q3-05	Aug-05	Sep-05
214,795	225,086	227,325	236,107	235,255	236,107
(7.1%)	(10.1%)	(10.0%)	(12.2%)	(12.6%)	(12.2%)

### Credits



Economic Research Division, Northern Region Office