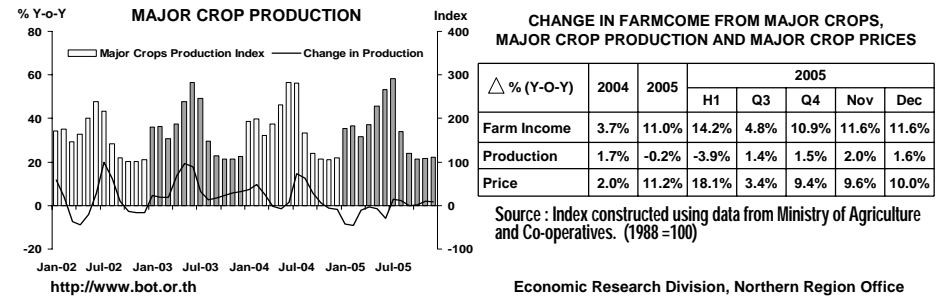
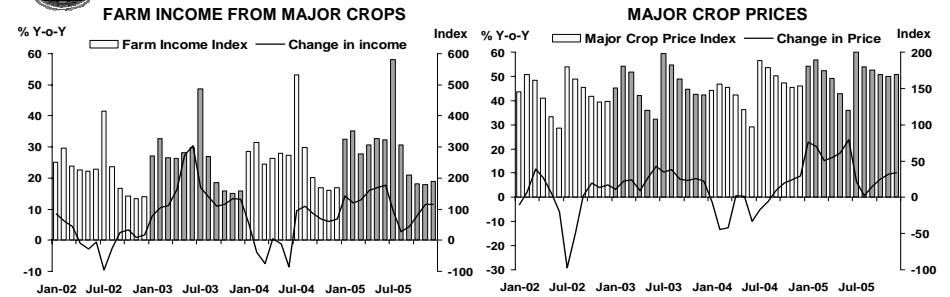


Press Release on Northern Region Economic Conditions in the Year 2005

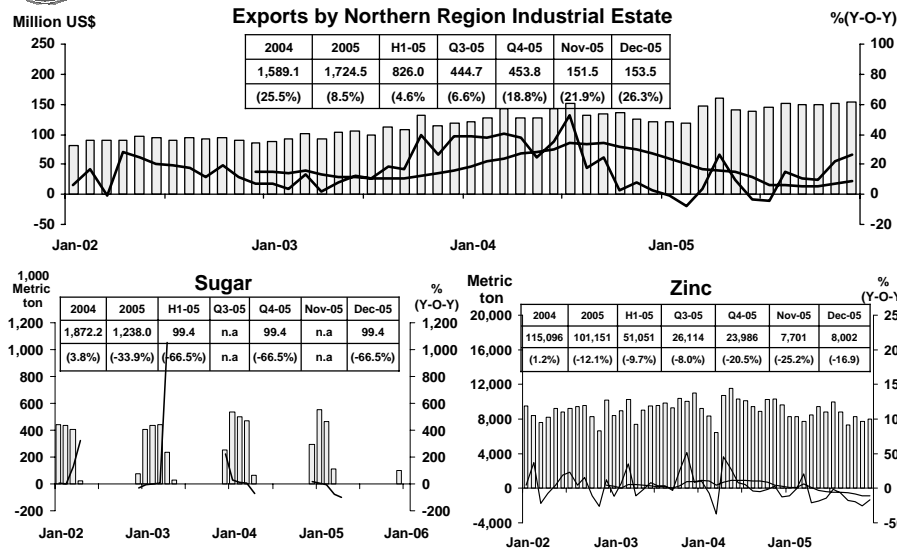
Bank of Thailand, Northern Region Office



FARM INCOME FROM MAJOR CROPS



MANUFACTURING



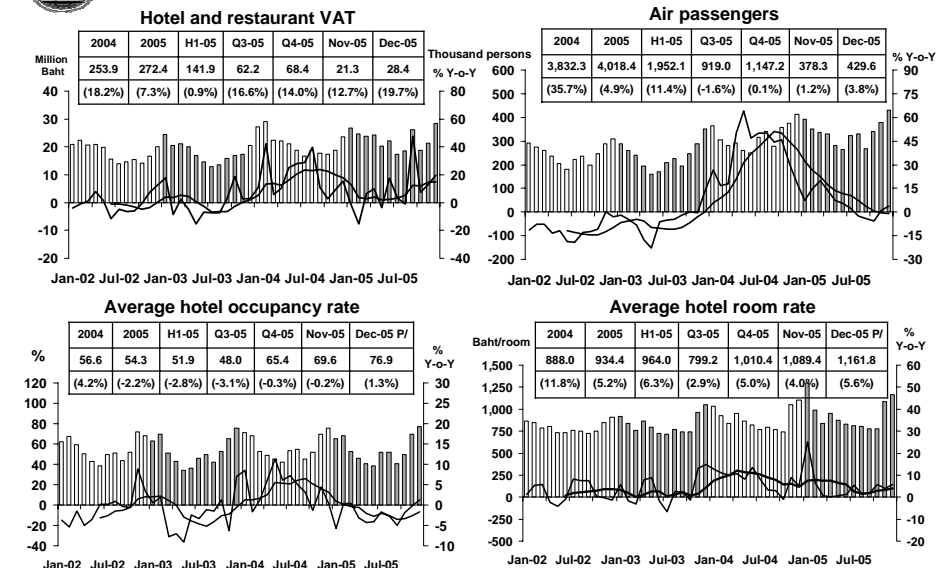
Sources: Lamphun Customs House, Office of the Cane and Sugar Board, and Pa-Dang Industry Co., Ltd.

<http://www.bot.or.th>

Economic Research Division, Northern Region Office



SERVICES



Sources: Ministry of Finance; Airports of Thailand Public Company Limited; and Data Management Group, Bank of Thailand

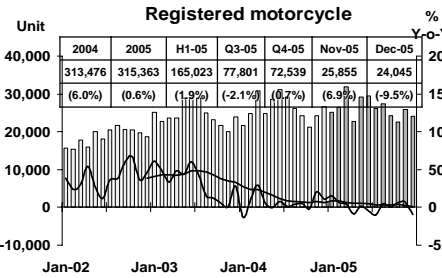
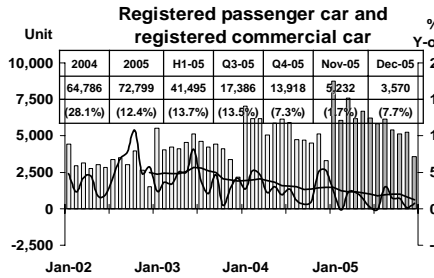
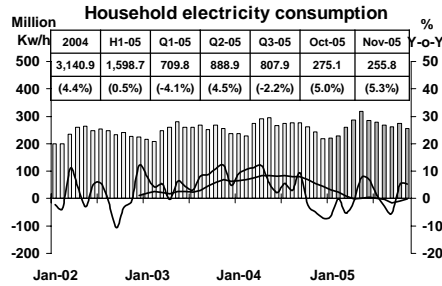
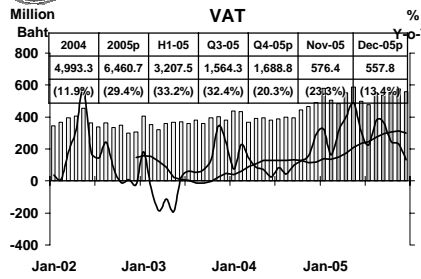
<http://www.bot.or.th>

Economic Research Division, Northern Region Office



PRIVATE CONSUMPTION

5

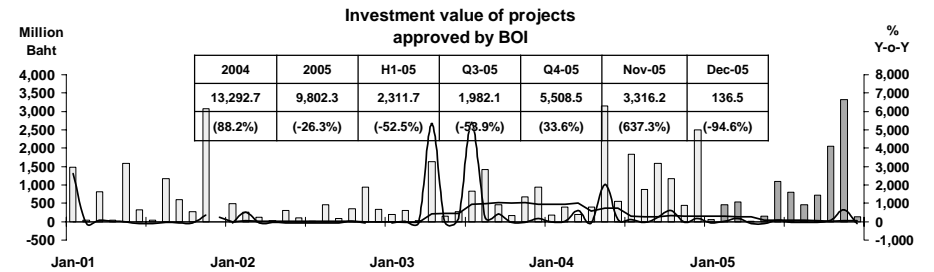
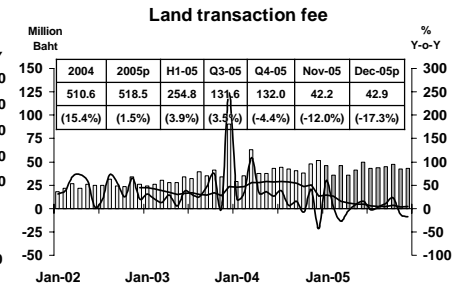
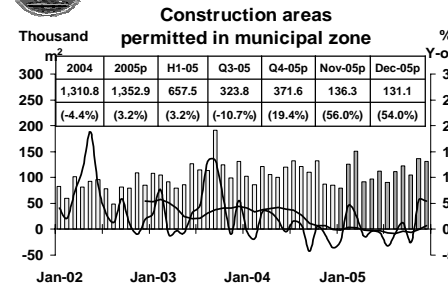


Sources: Ministry of Finance, Provincial Electricity Authority, Provincial Land Transportation Offices
<http://www.bot.or.th>
 Economic Research Division, Northern Region Office



PRIVATE INVESTMENT

6



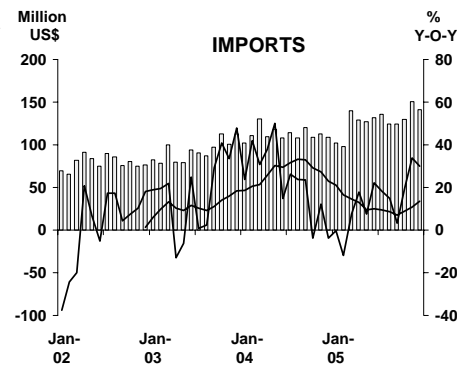
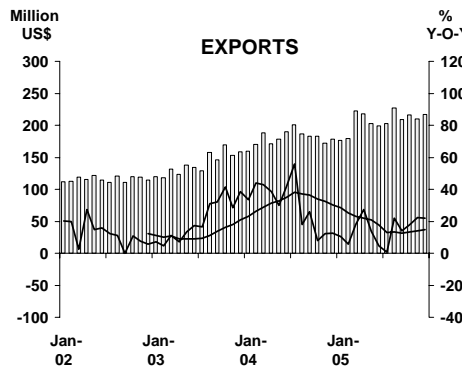
Sources: Municipality Offices; Provincial Land Offices; Northern Region Investment and Economic Center (BOI)
<http://www.bot.or.th>
 Economic Research Division, Northern Region Office



FOREIGN TRADE

7

	2004	2005	H1-05	Q3-05	Q4-05	Nov-05	Dec-05
EXPORTS	2,162.3 (28.8%)	2,481.8 (14.8%)	1,199.4 (13.3%)	639.3 (12.0%)	643.1 (20.7%)	209.9 (22.2%)	217.2 (21.9%)
IMPORTS	1,352.8 (21.3%)	1,534.7 (13.4%)	728.1 (7.2%)	384.2 (12.0%)	422.4 (27.9%)	150.9 (33.7%)	141.4 (30.0%)
Trade Balance	809.5	947.1	471.3	255.1	220.7	59.0	78.8



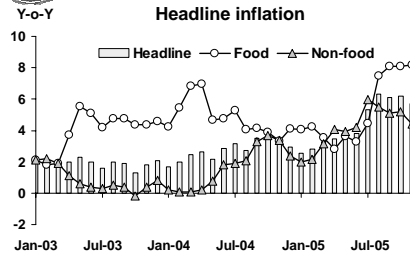
<http://www.bot.or.th>

Economic Research Division, Northern Region Office



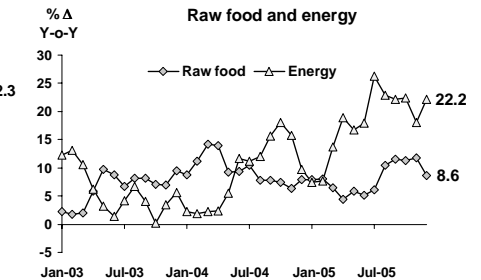
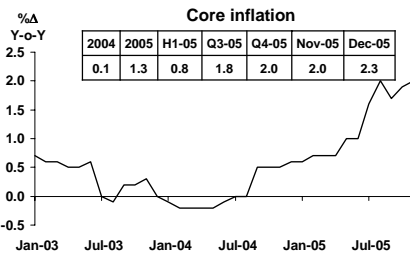
PRICE LEVEL

8



Headline inflation (2002 = 100)

%ΔY-o-Y	2004	2005	H1-05	Q3-05	Q4-05	Nov-05	Dec-05
Headline	2.8	4.6	3.3	5.9	5.9	5.7	5.9
Food	4.8	5.4	3.6	6.7	7.9	8.2	7.3
Non-food	1.7	4.2	3.3	5.5	4.9	4.4	5.1



Source: Bureau of Trade and Economic Indices, Ministry of Commerce
 Note: Northern region's Core CPI data has been released since January 2002

<http://www.bot.or.th>

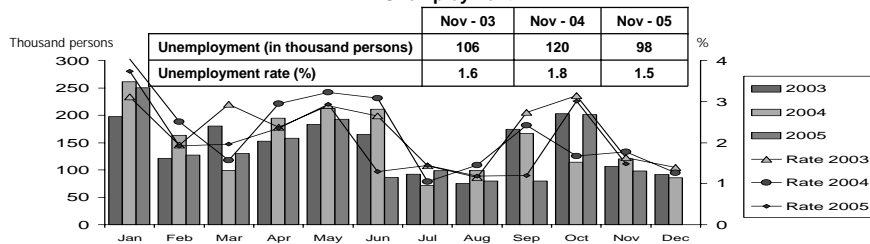
Economic Research Division, Northern Region Office



LABOR FORCE SURVEY

	% of Total Labor Force (as of Nov 2005)	2004 (Δ %)	H1-05 (Δ %)	Q3-05 (Δ %)	Oct-05 (Δ %)	Nov-05 (Δ %)
Labor Force (1,000 Persons)	100.0	6,787	6,638	6,660	6,682	6,645
Employed persons	98.4	3.6	-1.6	-2.3	-3.8	-1.5
• Agriculture	48.1	-3.8	-6.9	-0.2	-5.1	-3.3
• Non-agriculture	50.2	13.0	4.1	-4.4	-2.1	0.3
- Wholesale & retail trade	13.5	26.2	-7.5	-5.6	-2.7	0.1
- Manufacturing	11.3	16.6	-14.7	-15.3	-8.0	5.0
- Construction	6.0	4.5	34.1	-9.3	4.3	6.8
- Hotel & restaurants Services	5.4	-2.5	83.4	28.5	-7.3	-3.2
- Others	14.0	8.8	4.2	-1.1	2.8	-4.3
Unemployed persons	1.5	-6.5	-59.3	-52.1	76.3	-17.9
Seasonally inactive persons	0.2	-4.0	156.9	91.7	34.9	-3.5

Unemployment

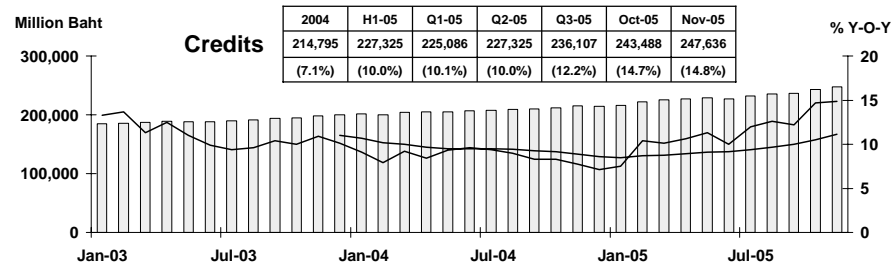
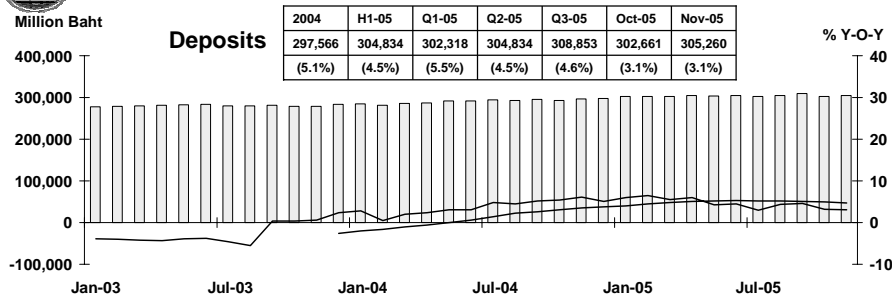


Source: National Statistical Office
<http://www.bot.or.th>

Economic Research Division, Northern Region Office



DEPOSITS AND CREDITS OF COMMERCIAL BANKS



Source: Bank of Thailand
<http://www.bot.or.th>

Economic Research Division, Northern Region Office