



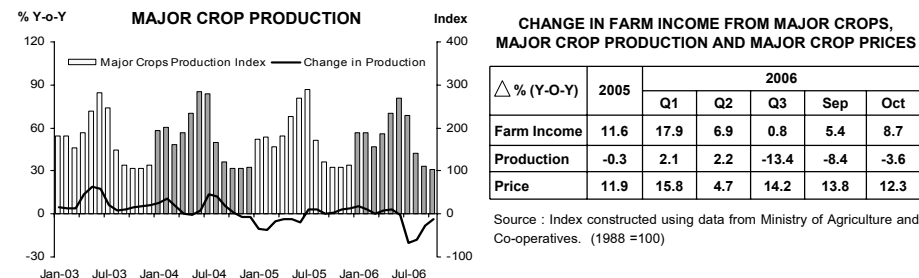
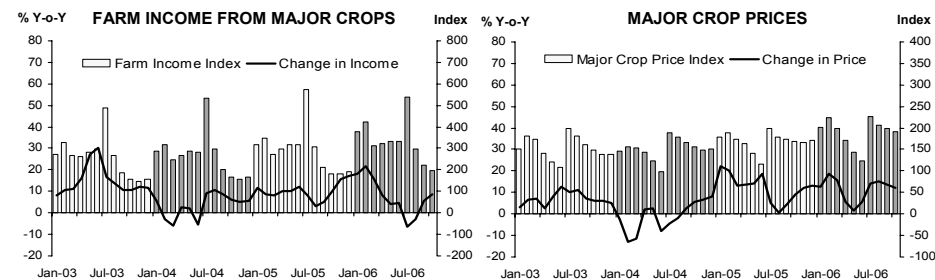
Press Release on Northern Region Economic Conditions in October 2006

Bank of Thailand, Northern Region Office

Economic Research Division, Northern Region Office



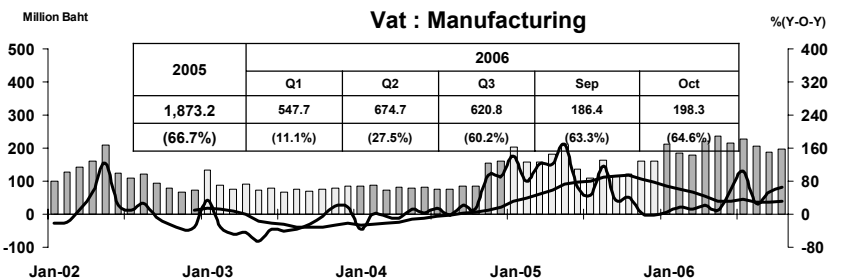
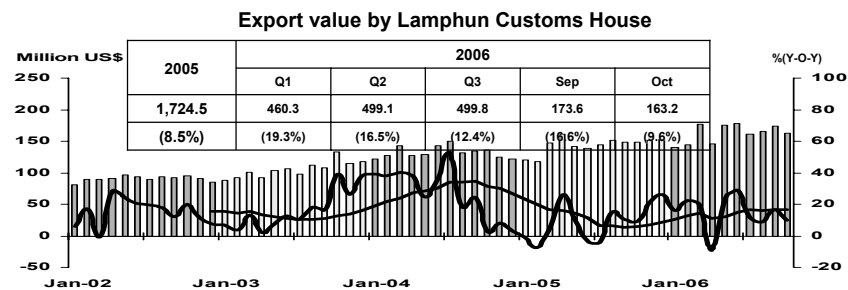
FARM INCOME FROM MAJOR CROPS



Economic Research Division, Northern Region Office



MANUFACTURING

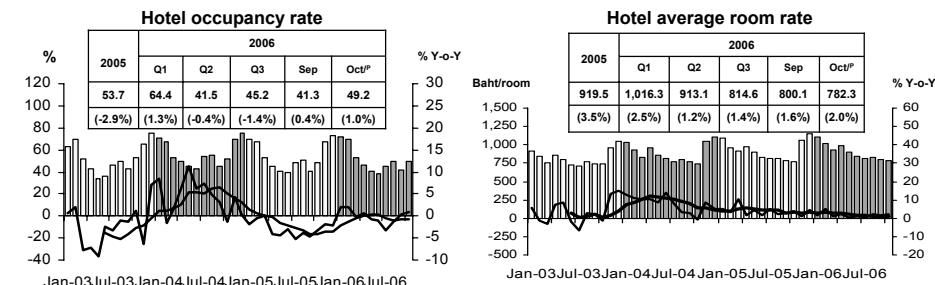
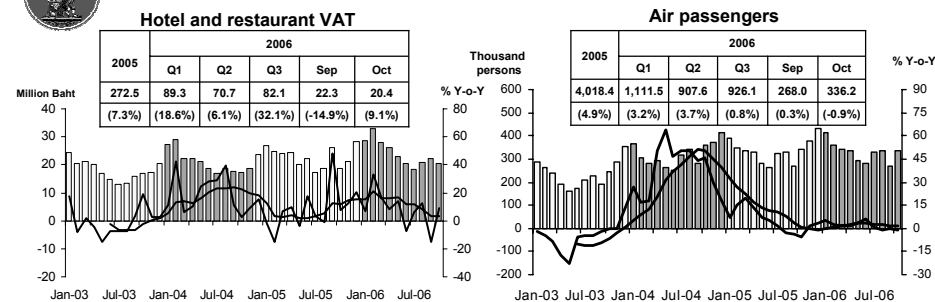


Sources: Lamphun Customs House, and Ministry of Finance

Economic Research Division, Northern Region Office



SERVICES

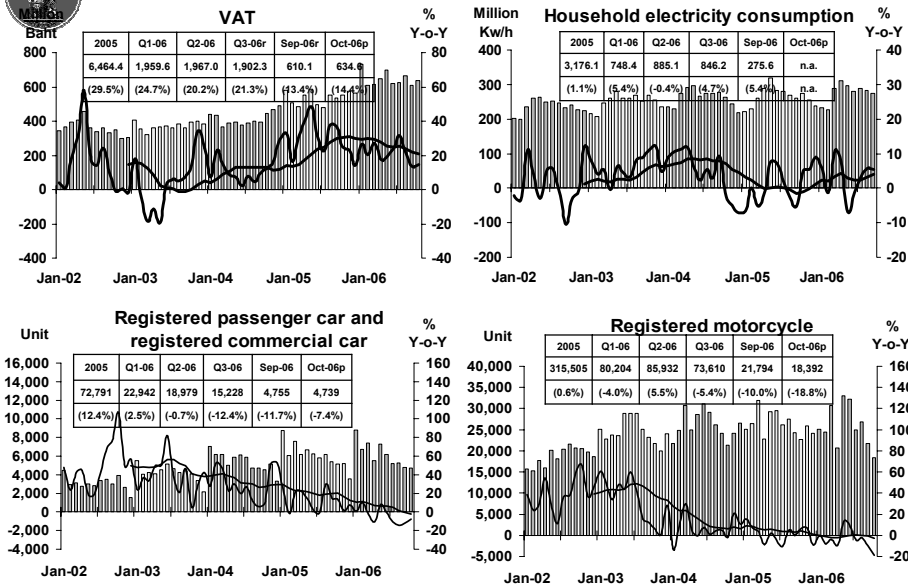


Sources: Ministry of Finance; Airports of Thailand Public Company Limited.; and Data Management Group, Bank of Thailand

Economic Research Division, Northern Region Office



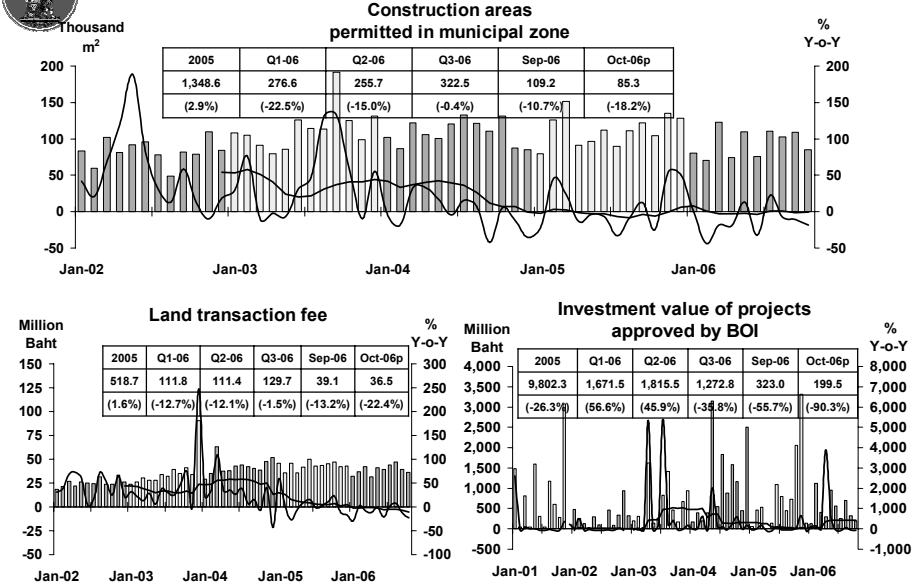
PRIVATE CONSUMPTION



Sources: Ministry of Finance, Provincial Electricity Authority, Provincial Land Transportation Offices
Economic Research Division, Northern Region Office



PRIVATE INVESTMENT

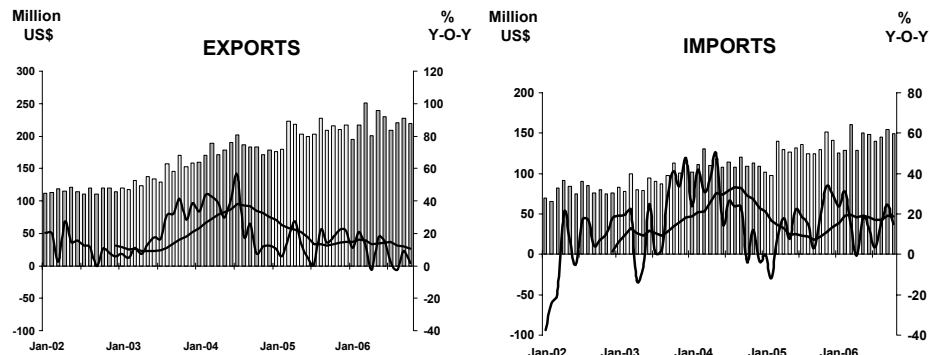


Sources: Municipality Offices, Provincial Land Offices, Customs Department, Northern Region Investment and Economic Center (BOI)
Economic Research Division, Northern Region Office



FOREIGN TRADE

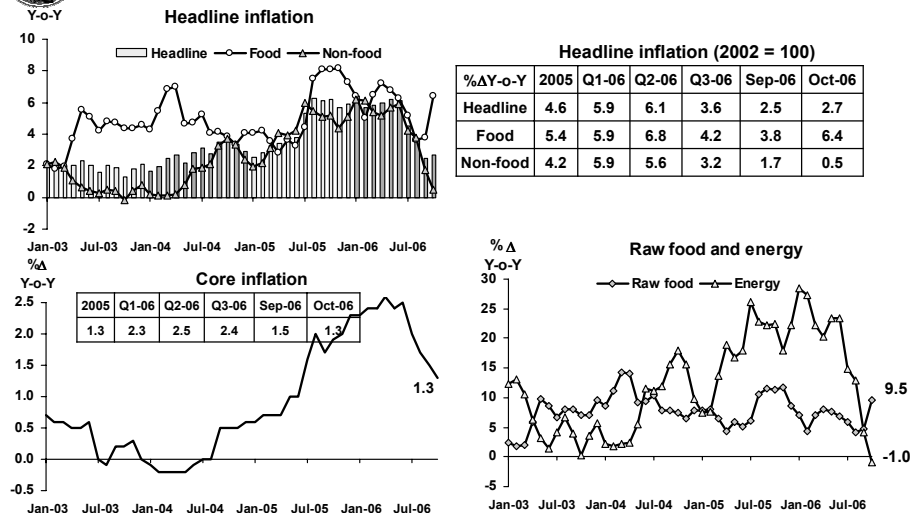
	2005	2006				
		Q1	Q2	Q3	Sep	Oct
EXPORTS	2,481.8 (14.8%)	663.7 (14.7%)	669.8 (10.0%)	656.9 (2.7%)	227.7 (8.9%)	219.2 (1.5%)
IMPORTS	1,534.7 (13.4%)	415.4 (22.2%)	427.3 (10.0%)	439.8 (14.5%)	154.7 (24.7%)	149.7 (15.1%)
Trade Balance	947.1	248.3	242.5	217.1	73.1	69.5



Source: Customs Department
Economic Research Division, Northern Region Office



PRICE LEVEL



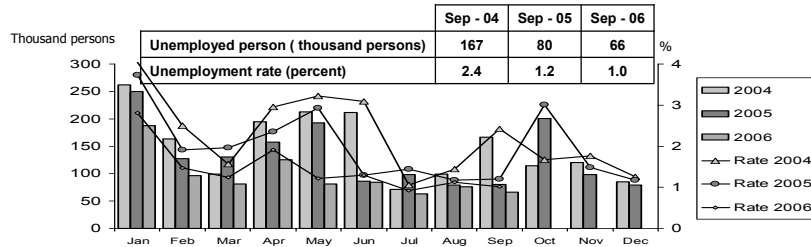
Source: Bureau of Trade and Economic Indices, Ministry of Commerce
Note: Northern region's Core CPI data has been released since January 2002
Economic Research Division, Northern Region Office



LABOUR FORCE SURVEY

	% of Total Labour Force (as of Sep 2006)	2005 (Δ%)	Q1-06 (Δ%)	Q2-06 (Δ%)	Aug-06 (Δ%)	Sep-06 (Δ%)
Labour Force (1,000 Persons)	100.0	6,705	6,520	6,526	6,776	6,503
Employed persons	98.8	-0.7	-0.5	-1.4	0.3	-2.2
• Agriculture	48.5	0.5	5.6	5.0	-5.0	-7.1
• Non-agriculture	50.3	-2.1	-5.3	-7.5	6.2	3.0
- Wholesale & retail trade	15.0	-4.2	-6.0	-7.9	8.5	12.8
- Manufacturing	9.3	-14.5	-9.3	-8.6	13.3	-14.0
- Construction	7.2	8.2	8.8	-13.6	-0.3	13.5
- Hotel & restaurants Services	6.0	9.0	-13.1	-12.3	-2.8	5.4
- Others	12.8	2.0	-6.1	-1.0	4.6	0.9
Unemployed persons	1.0	-7.7	-37.9	-1.8	-5.0	-17.5
Seasonally inactive persons	0.2	-81.9	-28.7	-55.8	-0.7	13.1

Unemployment



Source: National Statistical Office

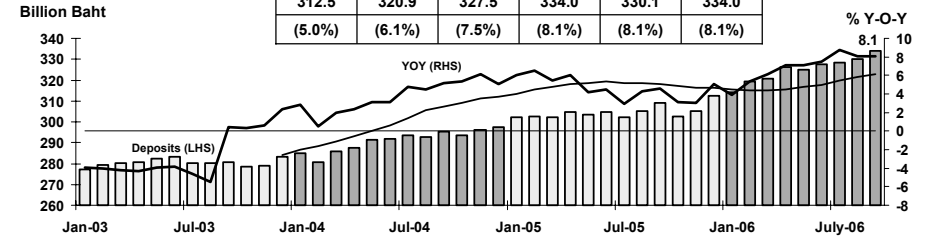
Economic Research Division, Northern Region Office



DEPOSITS AND CREDITS OF COMMERCIAL BANKS

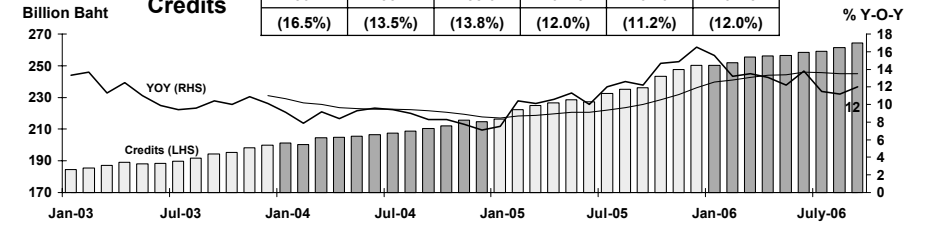
Deposits

2005	Q1-06	Q2-06	Q3-06	Aug-06	Sep-06
312.5	320.9	327.5	334.0	330.1	334.0
(5.0%)	(6.1%)	(7.5%)	(8.1%)	(8.1%)	(8.1%)



Credits

2005	Q1-06	Q2-06	Q3-06	Aug-06	Sep-06
250.2	255.4	258.6	264.5	261.6	264.5
(16.5%)	(13.5%)	(13.8%)	(12.0%)	(11.2%)	(12.0%)



Source: Bank of Thailand

Economic Research Division, Northern Region Office