



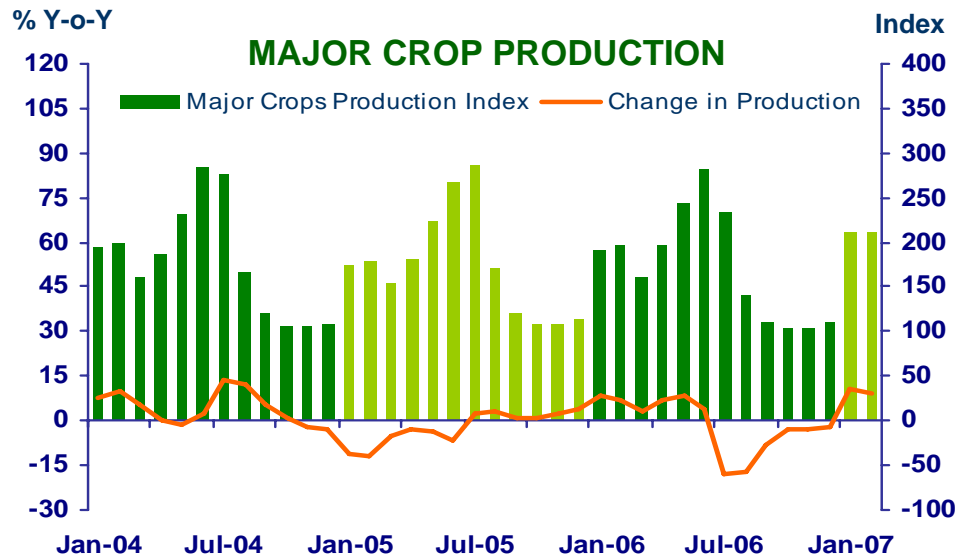
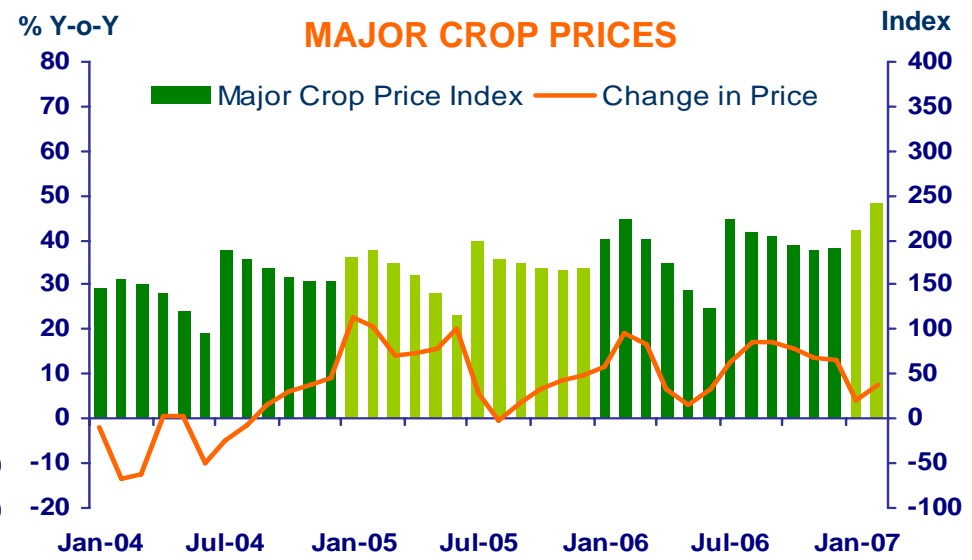
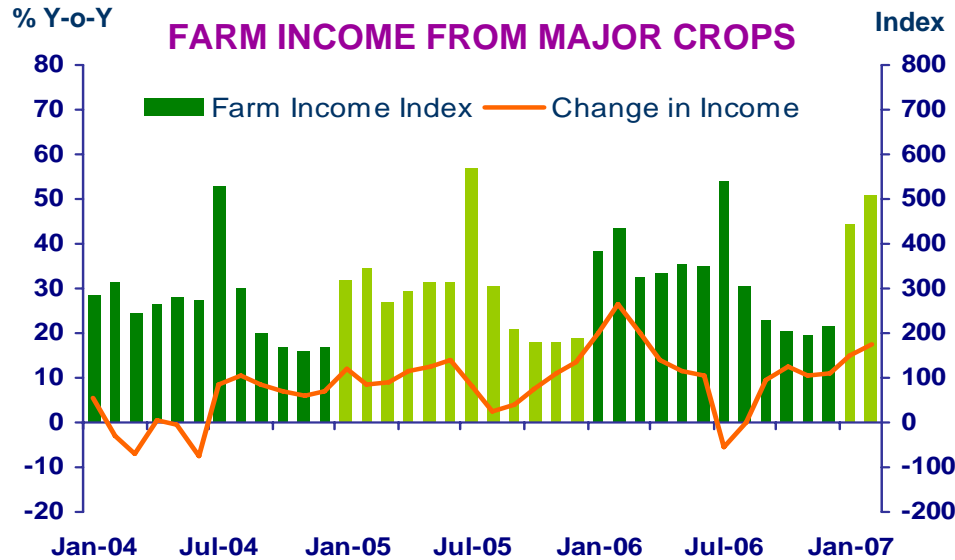
***Press Release on
Northern Region Economic Conditions in February 2007***

Bank of Thailand, Northern Region Office



FARM INCOME FROM MAJOR CROPS

Economic Research Division, Northern Region Office



CHANGE IN FARM INCOME FROM MAJOR CROPS, MAJOR CROP PRODUCTION AND MAJOR CROP PRICES

△ % (Y-O-Y)	2005	2006	2006			2007	
			H1	Q3	Q4	Jan	Feb
Farm Income	10.0	12.6	18.6	4.0	11.2	14.9	15.1
Production	-0.2	-1.2	6.0	-12.7	-2.6	10.6	7.8
Price	10.2	13.8	12.6	16.7	13.8	4.3	7.3

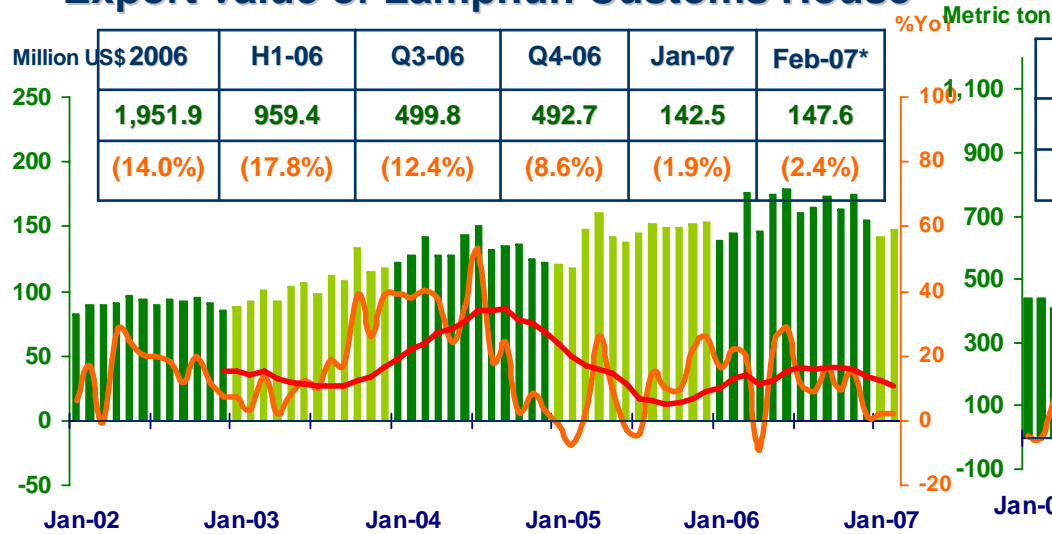
Source: Index constructed using data from Ministry of Agriculture and Co-operatives (1988 =100).



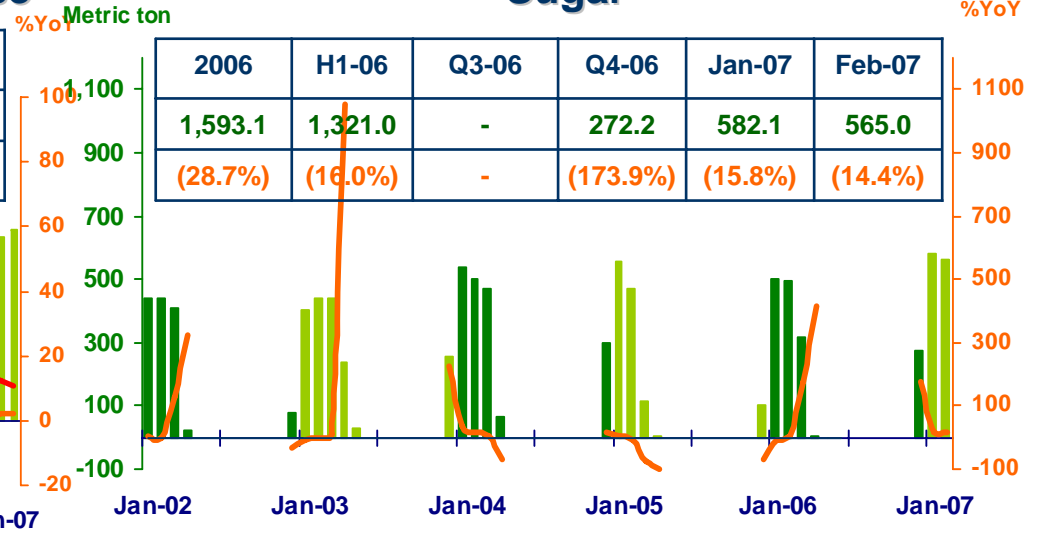
MANUFACTURING

Economic Research Division, Northern Region Office

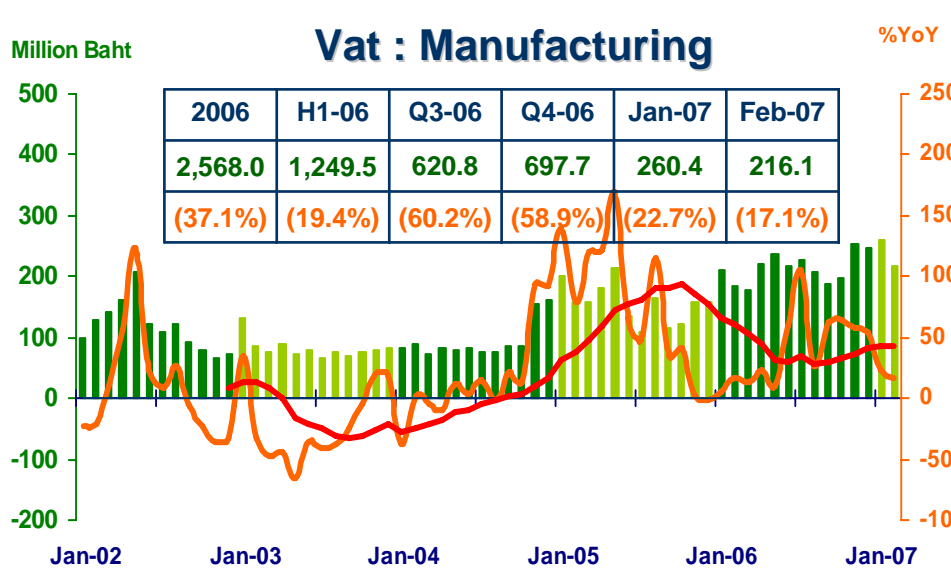
Export value of Lamphun Customs House



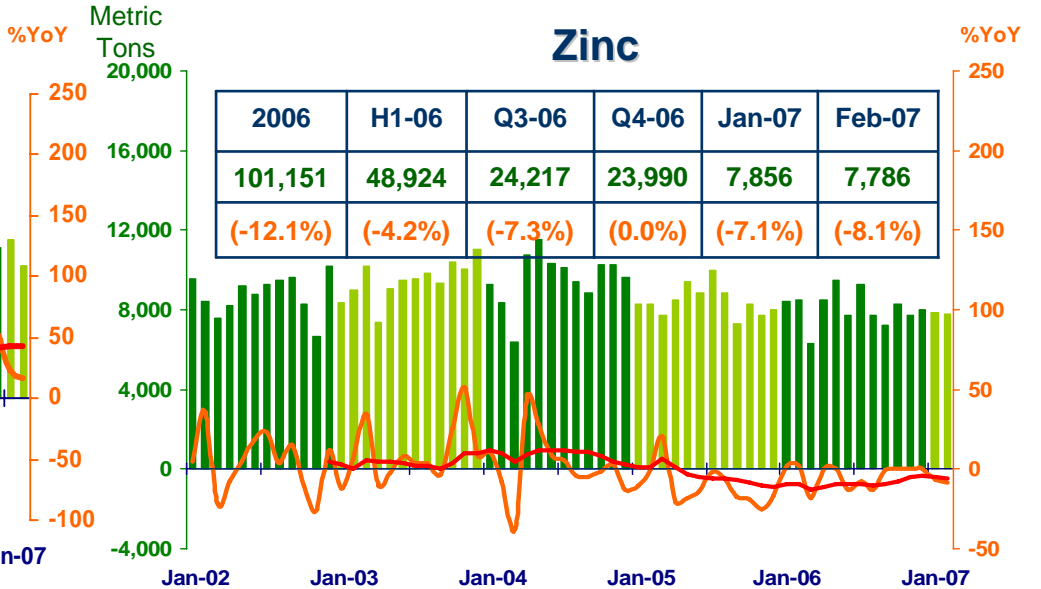
Sugar



Vat : Manufacturing



Zinc



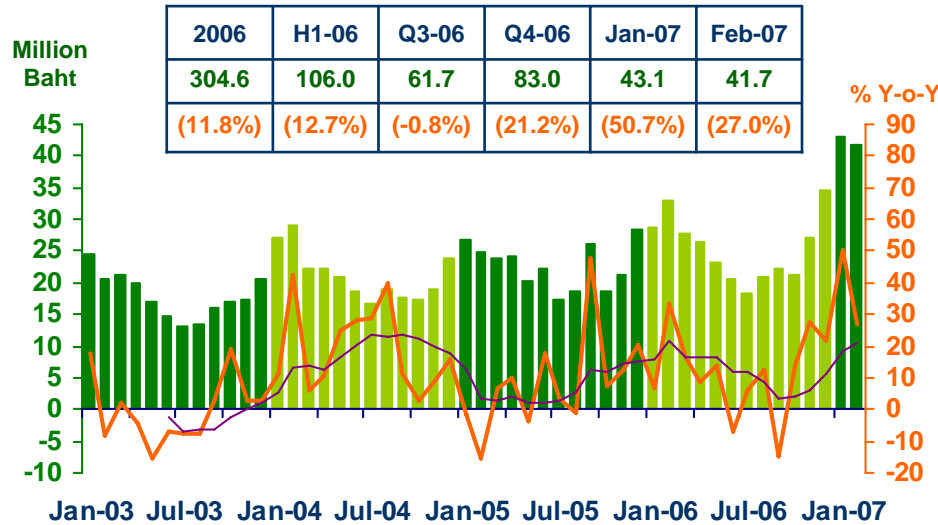
Sources: Lamphun Customs House, Ministry of Finance; Thai Cane and Sugar Cooperation Co., Ltd; Pa-Dang Industry; and Ministry of Finance



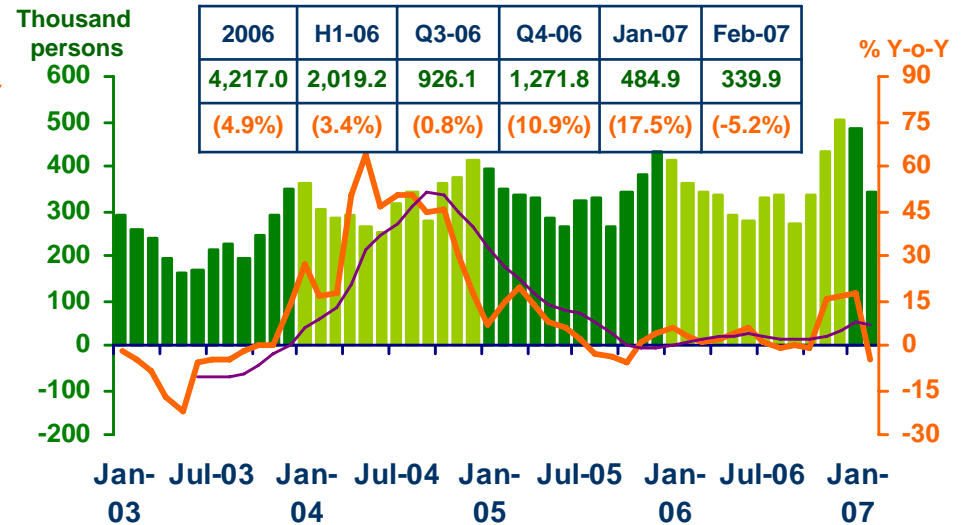
SERVICES

Economic Research Division, Northern Region Office

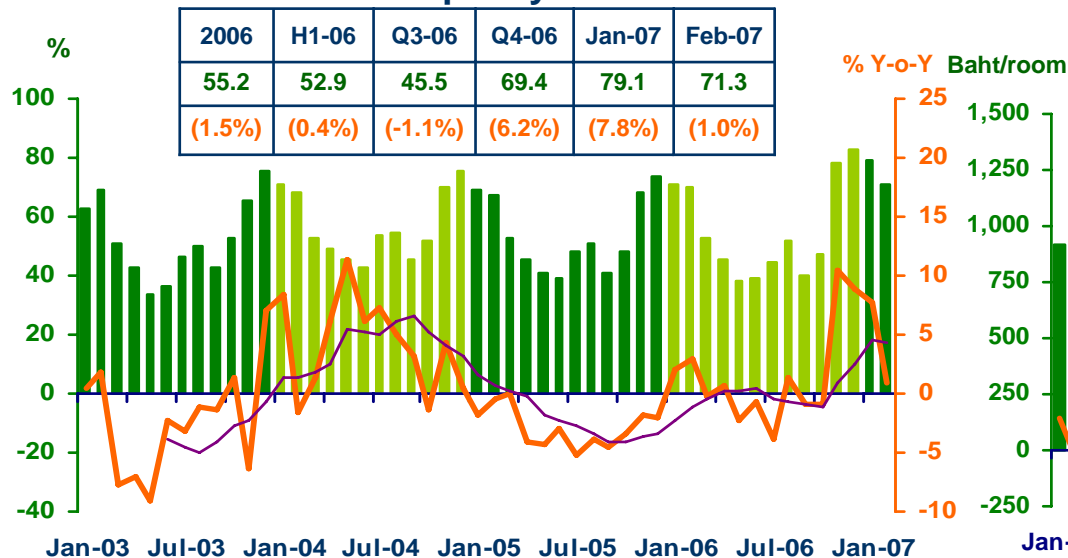
Hotel and restaurant VAT



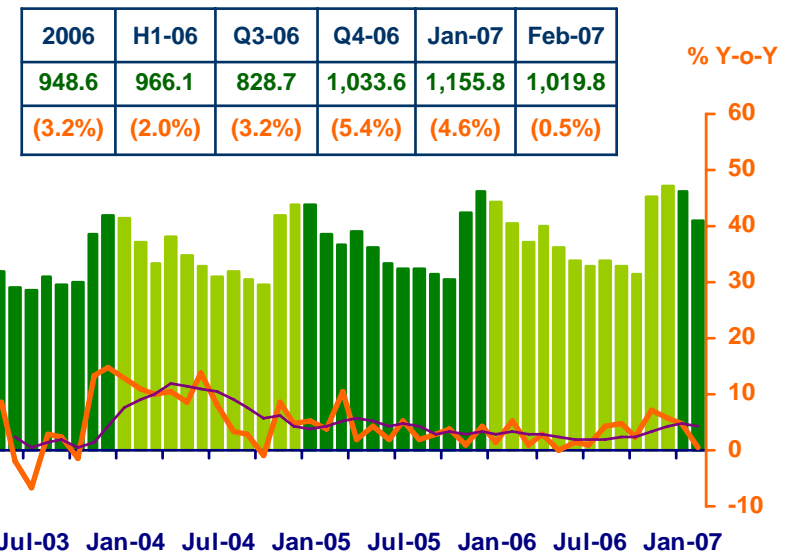
Air passengers



Hotel occupancy rate



Hotel average room rate



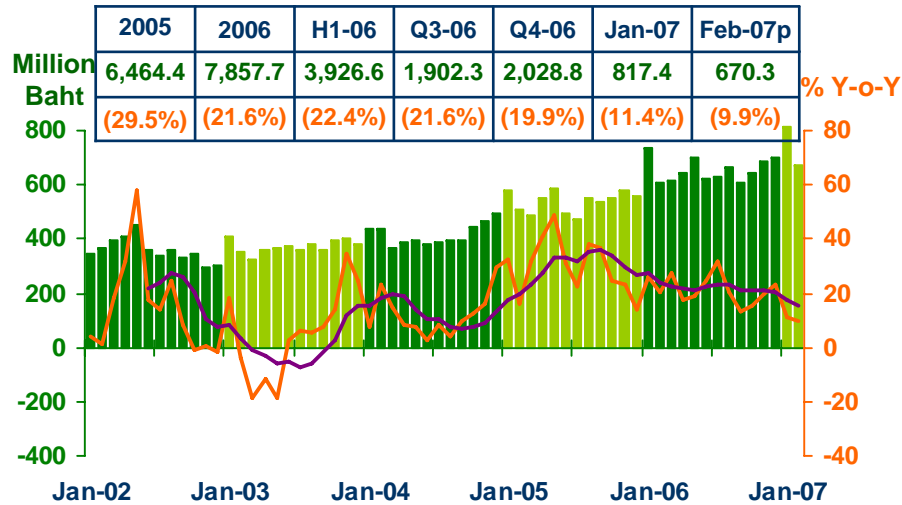
Sources: Ministry of Finance; Airports of Thailand Plc.; and Data Management Group, Bank of Thailand



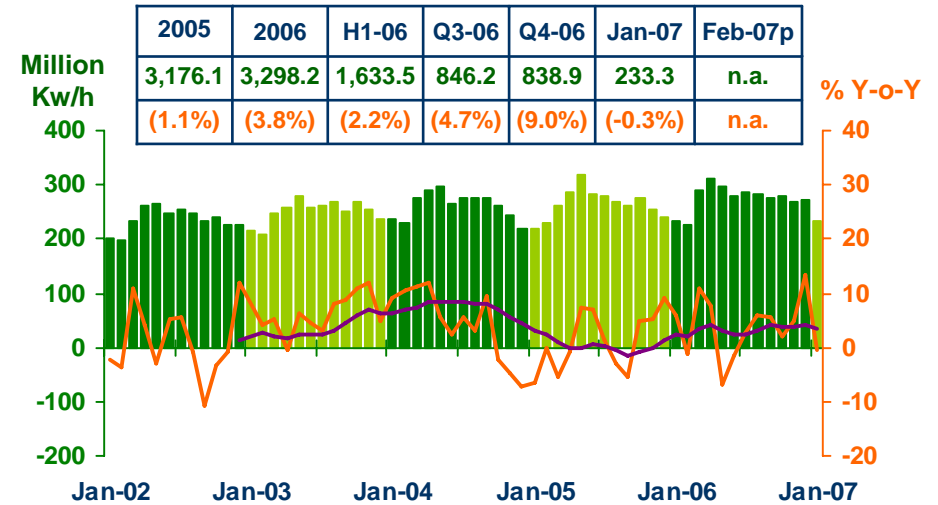
PRIVATE CONSUMPTION

Economic Research Division, Northern Region Office

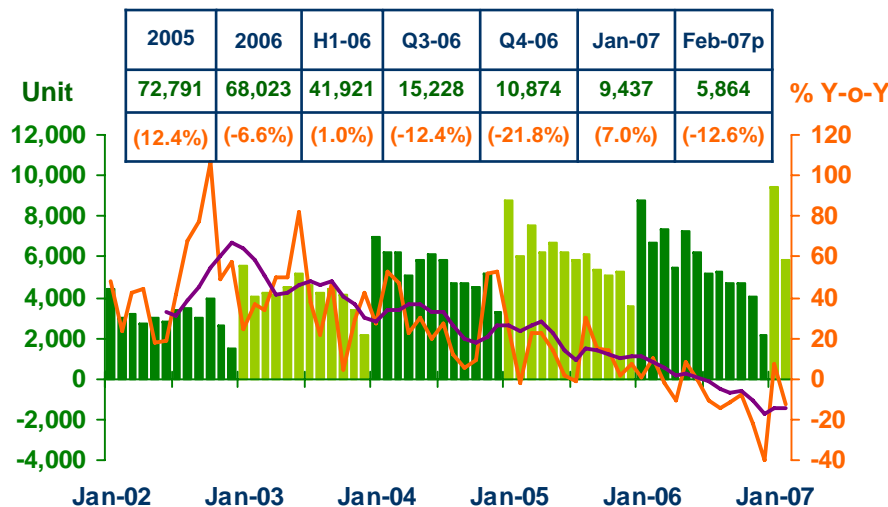
VAT



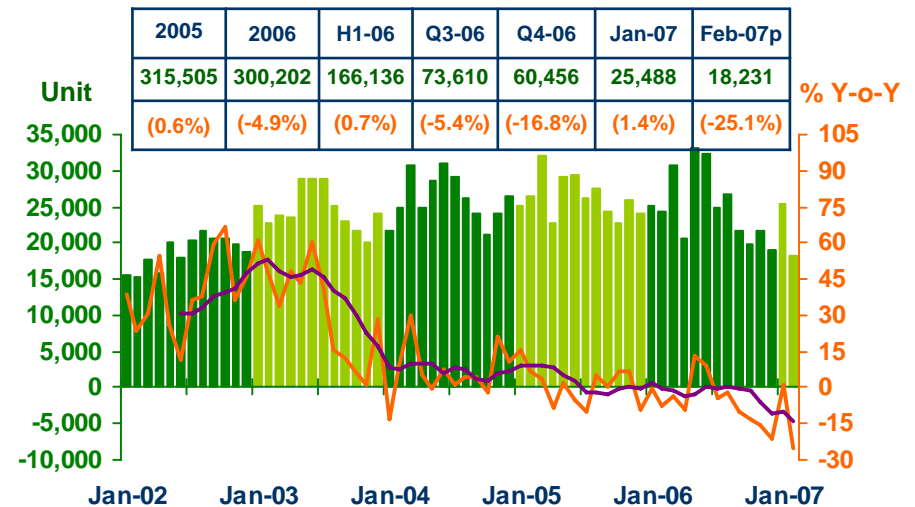
Household electricity consumption



Registered passenger car and registered commercial car



Registered motorcycle



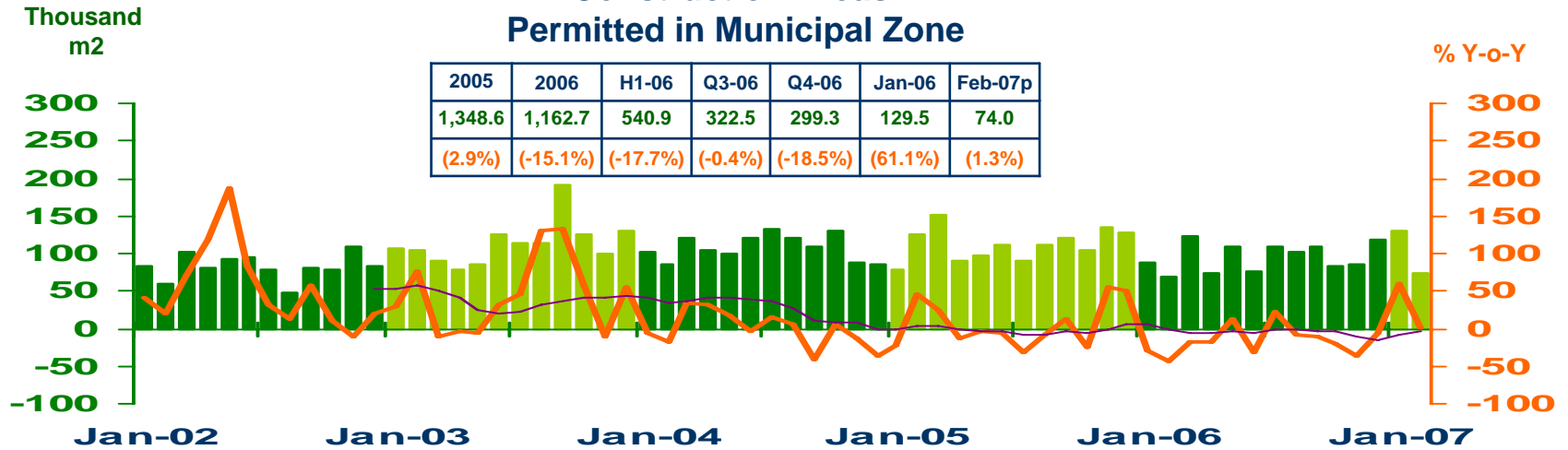
Sources: Ministry of Finance, Provincial Electricity Authority, and Provincial Land Transportation Offices



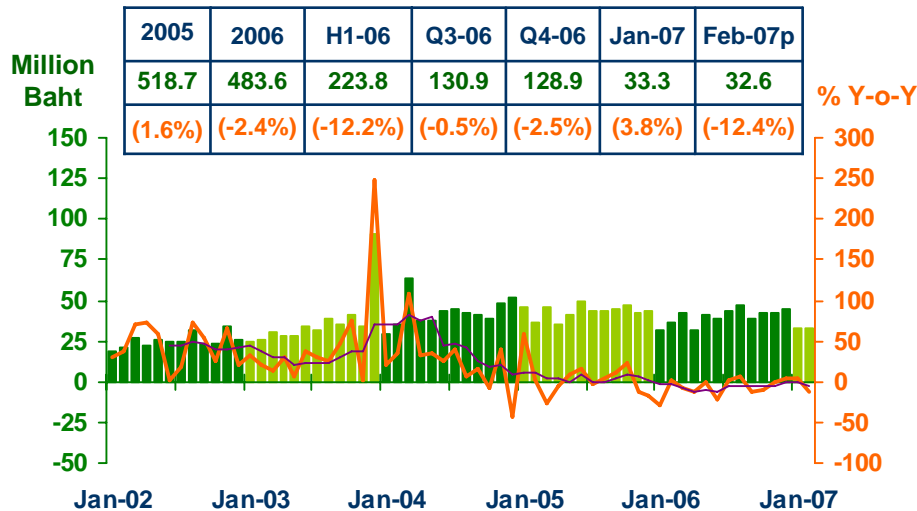
PRIVATE INVESTMENT

Economic Research Division, Northern Region Office

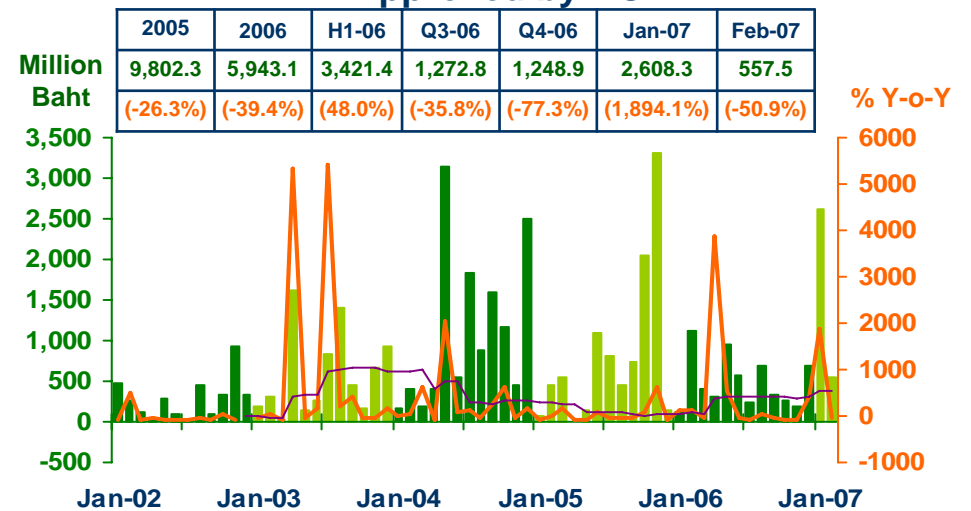
Construction Areas Permitted in Municipal Zone



Land Transaction Fee



Investment Value of Projects Approved by BOI



Sources: Municipality Offices, Provincial Land Offices, and Northern Region Investment and Economic Center (BOI)



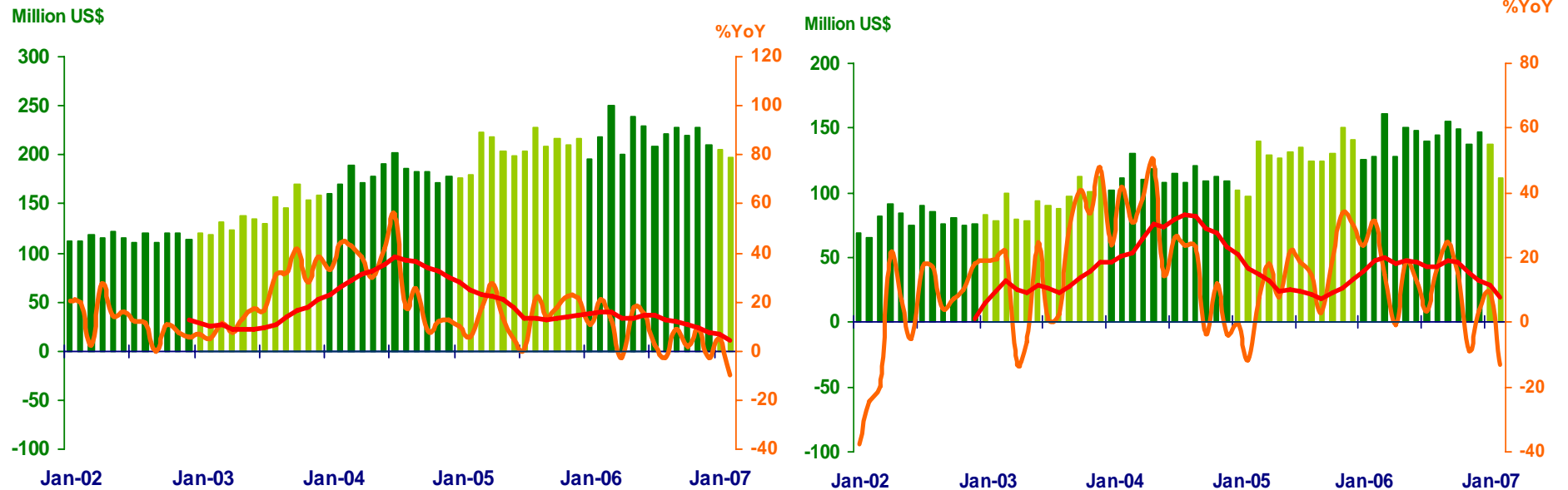
FOREIGN TRADE

Economic Research Division, Northern Region Office

	2006	2006			2007	
		H1	Q3	Q4	Jan	Feb
EXPORTS	2,645.6	1,333.5	656.9	658.2	205.6	196.9
	(7.2%)	(12.3%)	(2.7%)	(2.4%)	(5.3%)	(-9.5%)
IMPORTS	1,715.9	842.7	439.8	433.5	137.1	111.5
	(11.8%)	(15.7%)	(14.5%)	(2.6%)	(8.9%)	(-13.2%)
TRADE BALANCE	932.7	490.8	217.1	224.7	68.5	85.4

Exports

Imports



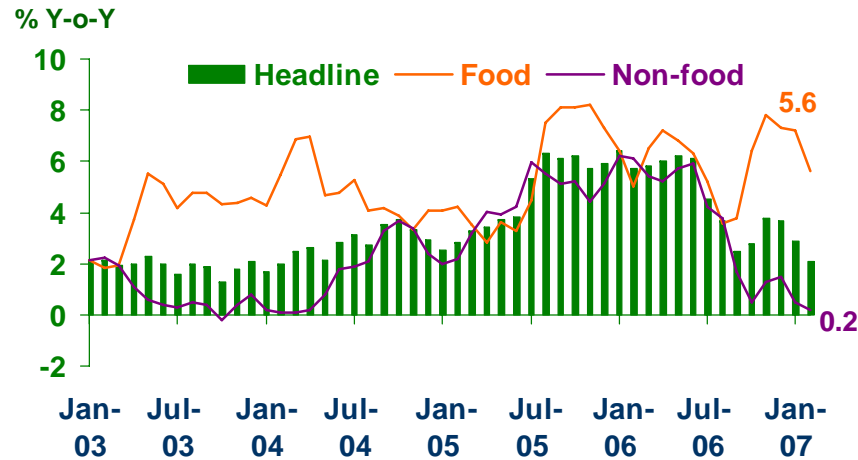
Source: Customs Department



PRICE LEVEL

Economic Research Division, Northern Region Office

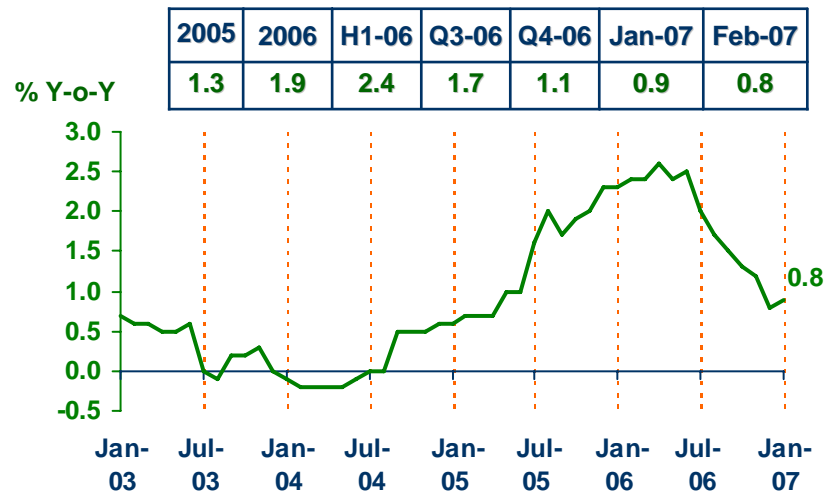
Headline Inflation



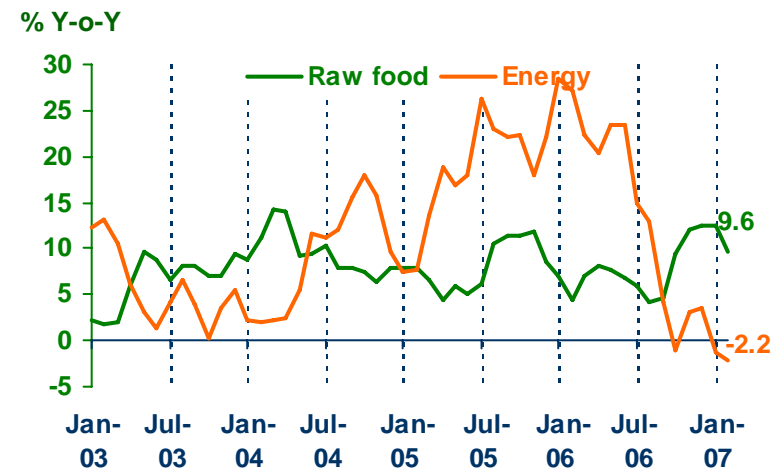
Headline inflation (2002 = 100)

%Y-o-Y	2005	2006	H1-06	Q3-06	Q4-06	Jan-07	Feb-07
Headline	4.6	4.7	6.0	3.6	3.4	2.9	2.1
Food	5.4	6.0	6.4	4.2	7.2	7.2	5.6
Non-food	4.2	3.9	5.8	3.2	1.1	0.5	0.2

Core Inflation



Raw food and Energy



Source: Bureau of Trade and Economic Indices, Ministry of Commerce

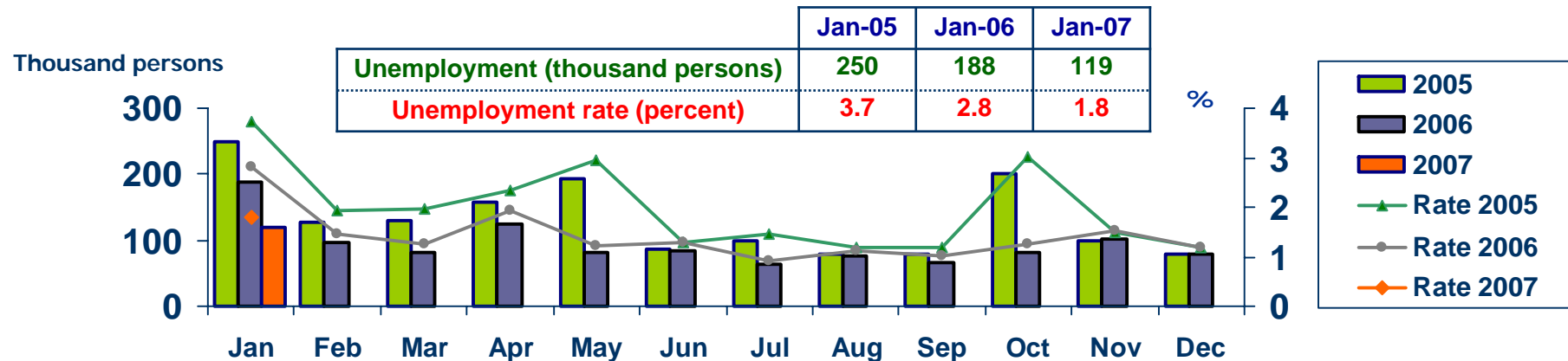


LABOR FORCE SURVEY

Economic Research Division, Northern Region Office

	% of Total Labor Force (as of Dec 2006)	2005 ($\Delta\%$)	Q1-06 ($\Delta\%$)	Q2-06 ($\Delta\%$)	Q3-06 ($\Delta\%$)	Dec-06 ($\Delta\%$)	Jan-07 ($\Delta\%$)
Labor Force (1,000 Persons)	100.0	6,705	6,520	6,526	6,503	6,741	6,625
Employed persons	98.5	-0.7	-0.5	-1.4	-2.2	0.3	-0.3
• Agriculture	54.2	0.5	5.6	5.0	-7.1	4.5	-2.7
• Non-agriculture	44.3	-2.1	-5.3	-7.5	3.0	-4.4	1.9
- Wholesale & retail trade	12.9	-4.2	-6.0	-7.9	12.8	1.7	2.4
- Manufacturing	8.8	-14.5	-9.3	-8.6	-14.0	-3.5	10.2
- Construction	4.5	8.2	8.8	-13.6	13.5	-18.7	5.6
- Hotel & restaurants Services	4.5	9.0	-13.1	-12.3	5.4	-15.1	-22.2
- Others	13.6	2.0	-6.1	-1.0	0.9	-0.6	2.0
Unemployed persons	1.2	-7.7	-37.9	-1.8	-17.5	1.2	-36.6
Seasonally inactive persons	0.3	-81.9	-28.7	-55.8	13.1	236.1	111.4

Unemployment



Source: National Statistical Office



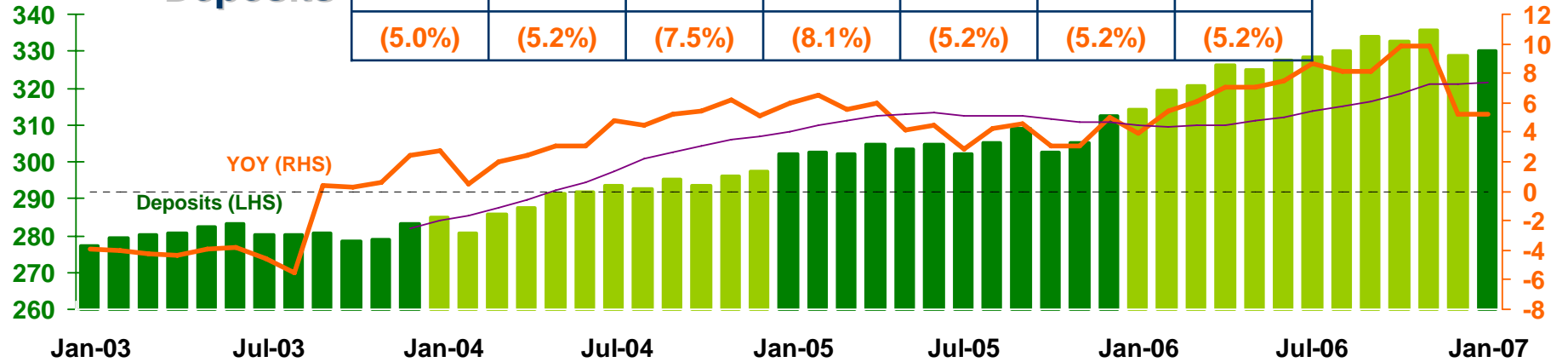
DEPOSITS AND CREDITS OF COMMERCIAL BANKS

Economic Research Division, Northern Region Office

Billion Baht

Deposits

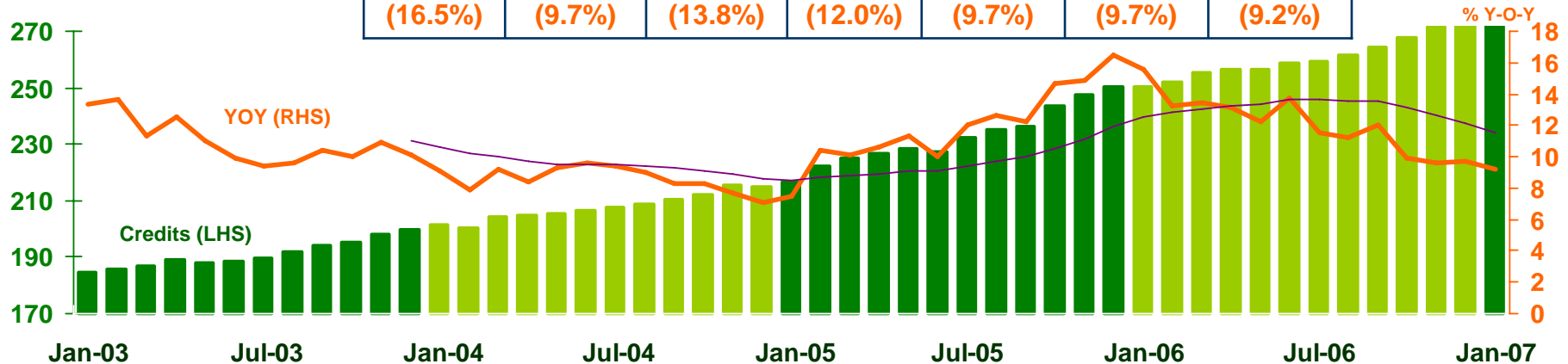
2005	2006	H1-06	Q3-06	Q4-06	Dec-06	Jan-07
312.5	328.7	327.5	334.0	328.7	328.7	330.3
(5.0%)	(5.2%)	(7.5%)	(8.1%)	(5.2%)	(5.2%)	(5.2%)



Billion Baht

Credits

2005	2006	H1-06	Q3-06	Q4-06	Dec-06	Jan-07
250.2	274.5	258.6	264.5	274.5	274.5	273.4
(16.5%)	(9.7%)	(13.8%)	(12.0%)	(9.7%)	(9.7%)	(9.2%)



Source: Bank of Thailand