



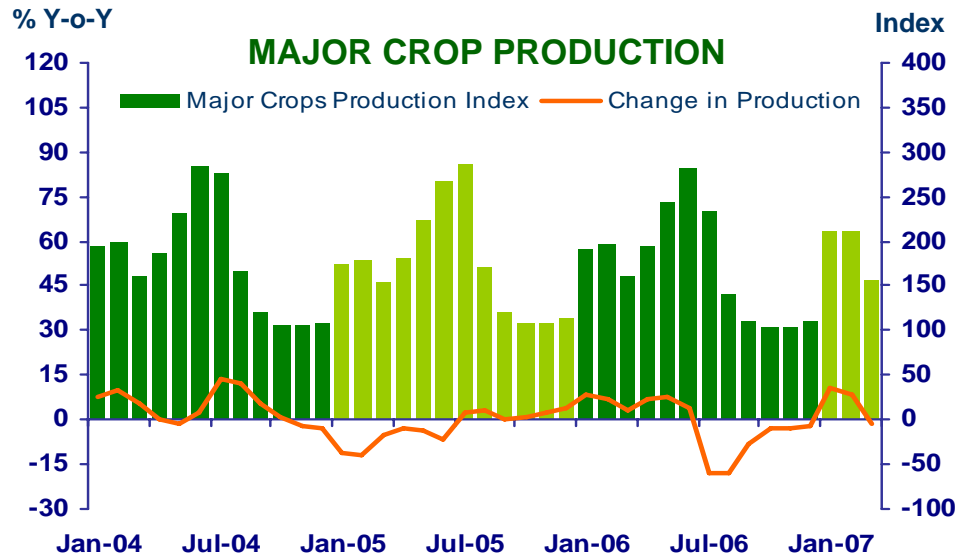
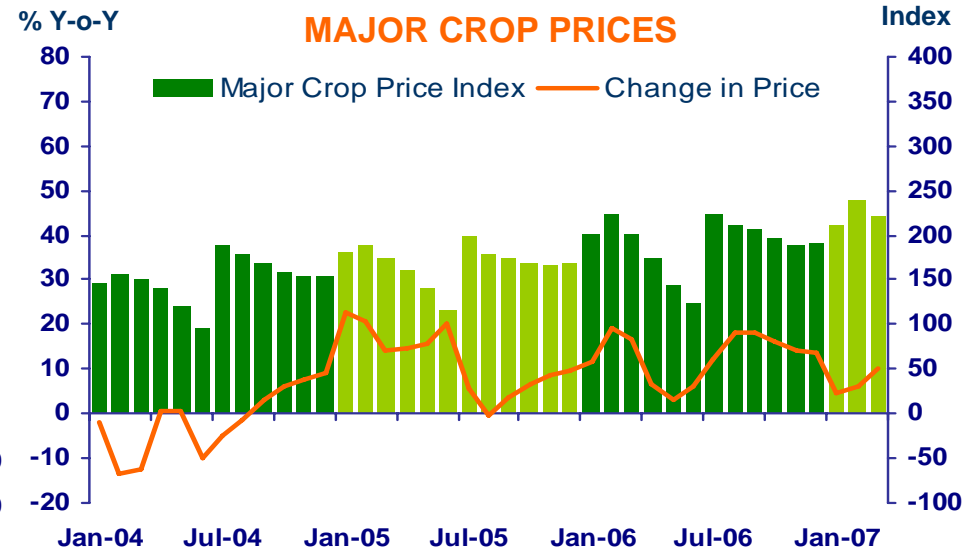
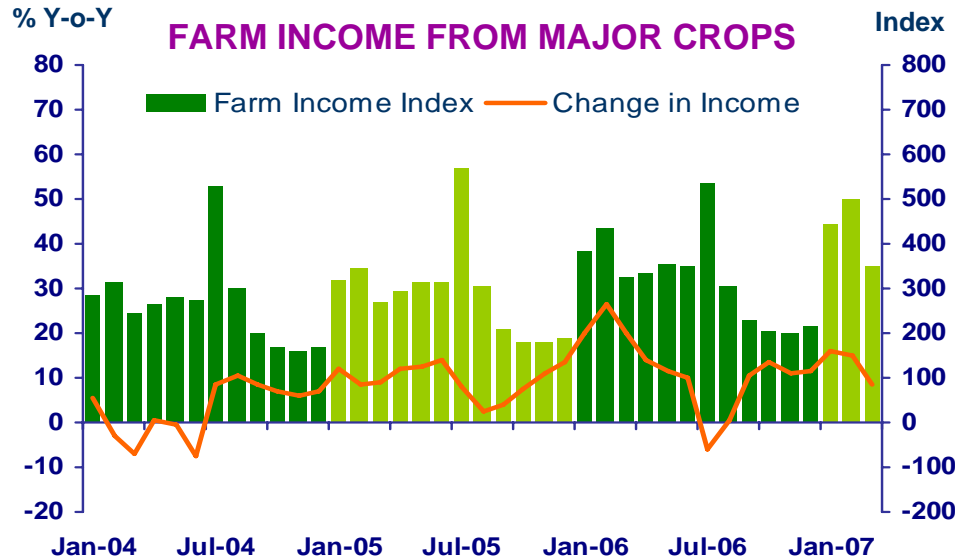
***Press Release on Northern Region Economic Conditions  
in March 2007 and in the First Quarter of 2007***

***Bank of Thailand, Northern Region Office***



# FARM INCOME FROM MAJOR CROPS

Economic Research Division, Northern Region Office



**CHANGE IN FARM INCOME FROM MAJOR CROPS, MAJOR CROP PRODUCTION AND MAJOR CROP PRICES**

△ % (Y-O-Y)	2006	2006		2007			
		H1	Q4	Q1	Jan	Feb	Mar
Farm Income	12.9	18.5	11.7	12.3	15.8	15.0	8.6
Production	-1.3	6.0	-2.6	4.3	11.0	8.8	-1.7
Price	14.2	12.5	14.3	8.0	4.8	6.2	10.3

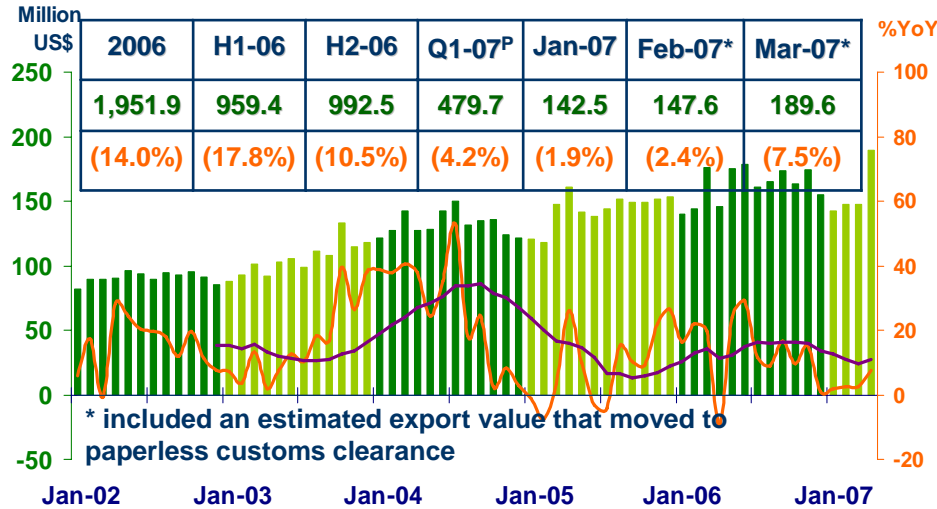
Source: Index constructed using data from Ministry of Agriculture and Co-operatives (1988 =100).



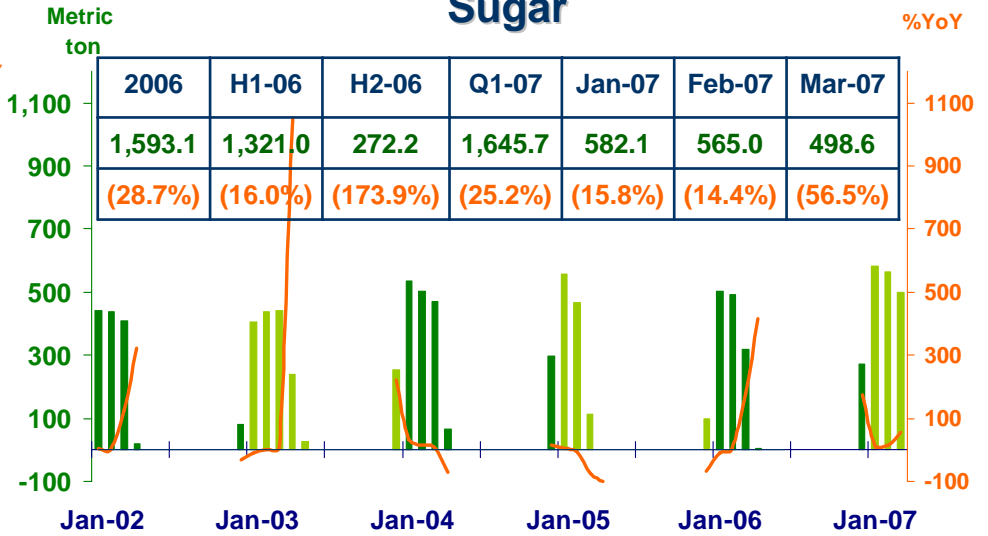
# MANUFACTURING

Economic Research Division, Northern Region Office

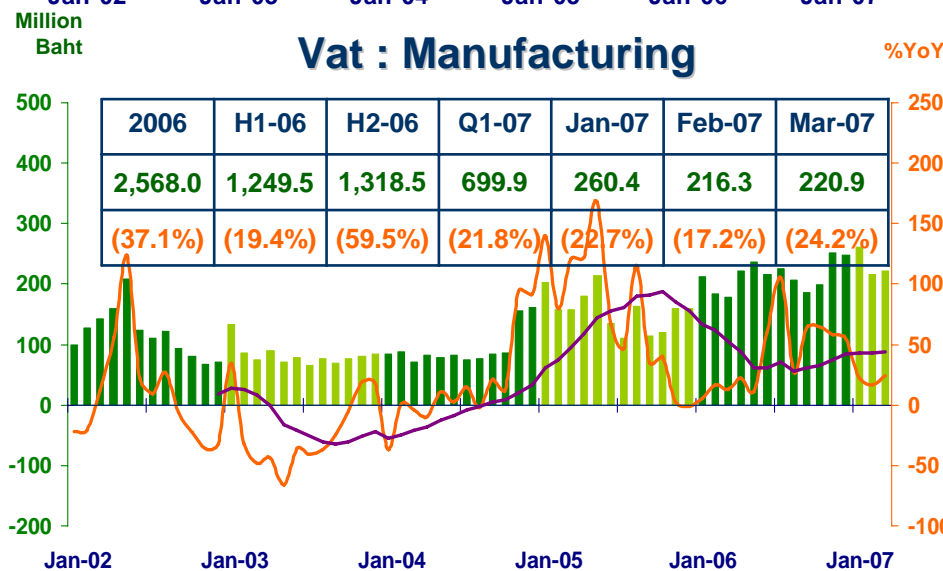
## Export value of Lamphun Customs House



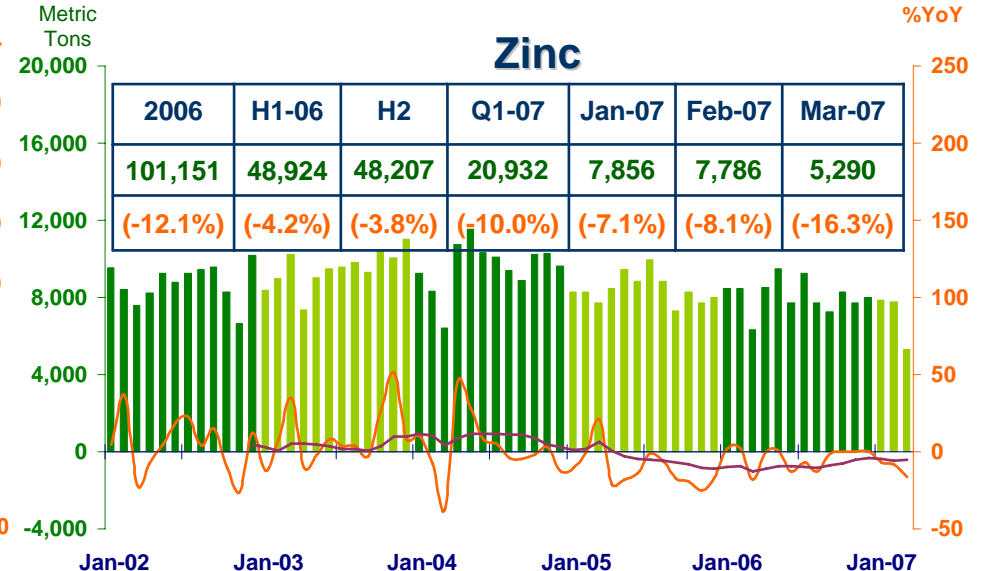
## Sugar



## Vat : Manufacturing



## Zinc



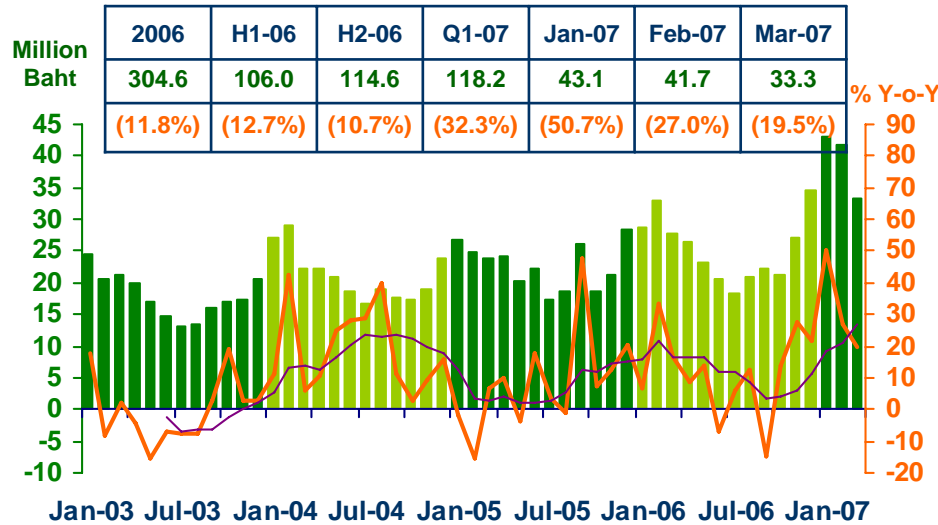
Sources: Lamphun Customs House, Ministry of Finance, Thai Cane and Sugar Cooperation Co., Ltd; Pa-Dang Industry Co., Ltd.; and Ministry of Finance



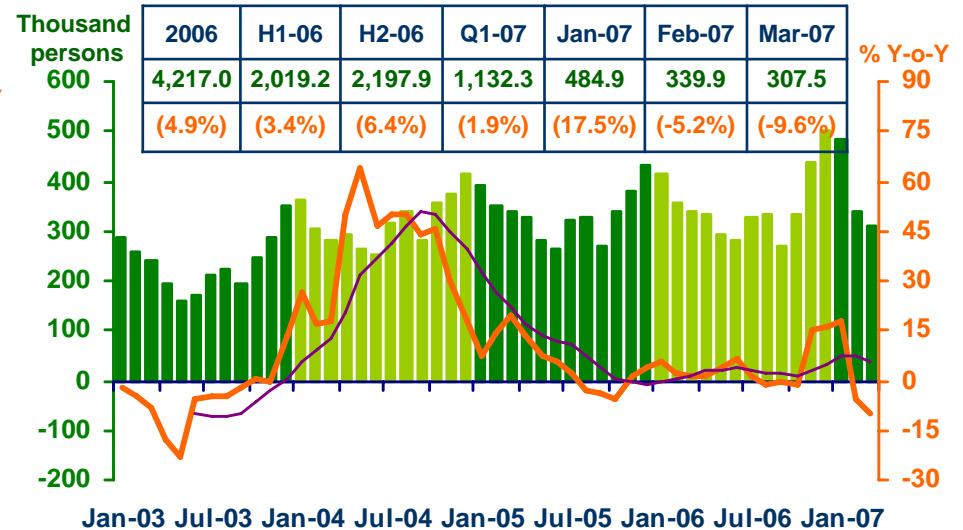
# SERVICES

Economic Research Division, Northern Region Office

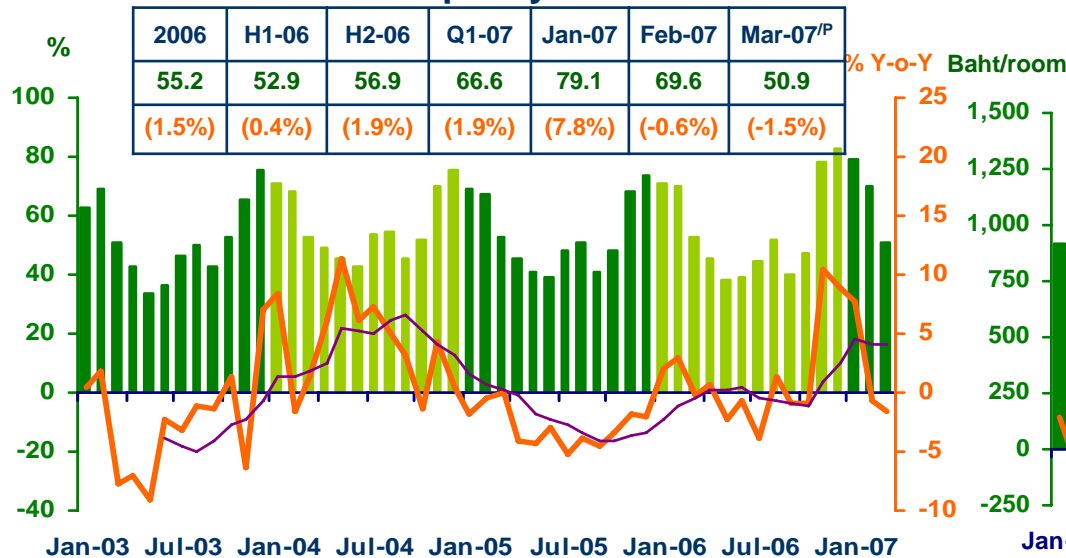
### Hotel and restaurant VAT



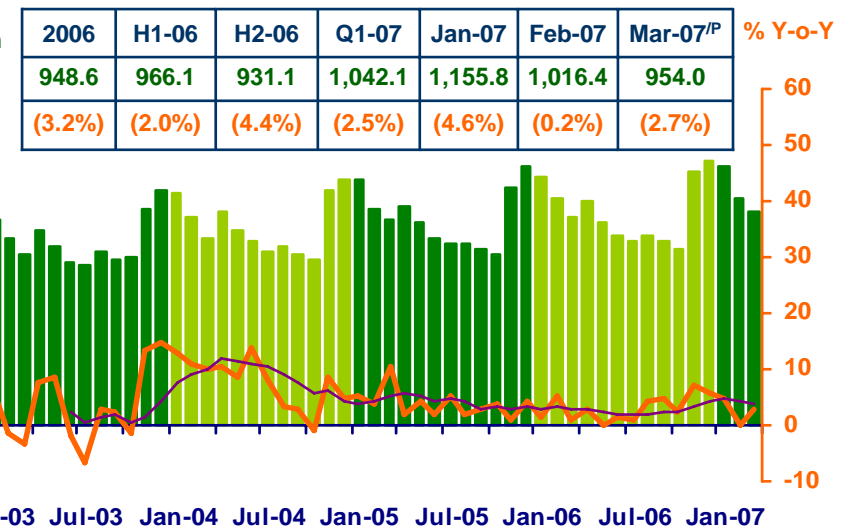
### Air passengers



### Hotel occupancy rate



### Hotel average room rate



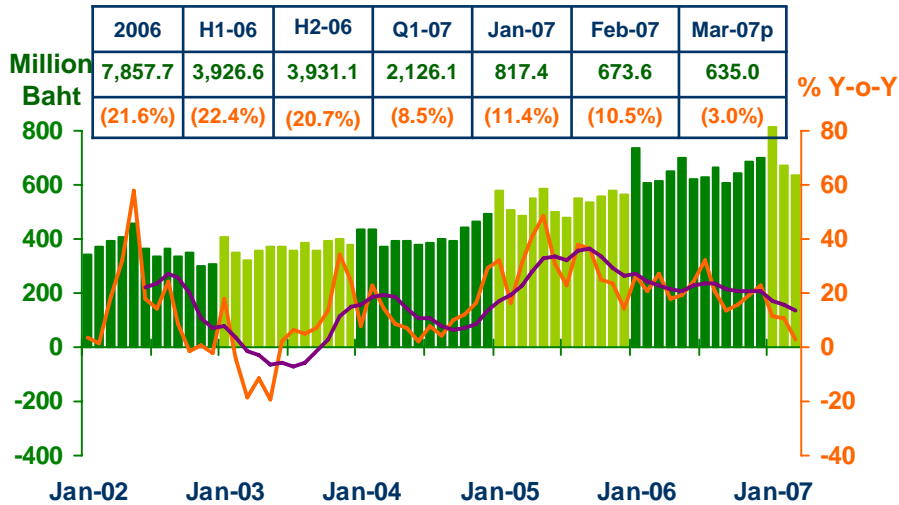
Sources: Ministry of Finance; Airports of Thailand Plc.; and Data Management Group, Bank of Thailand



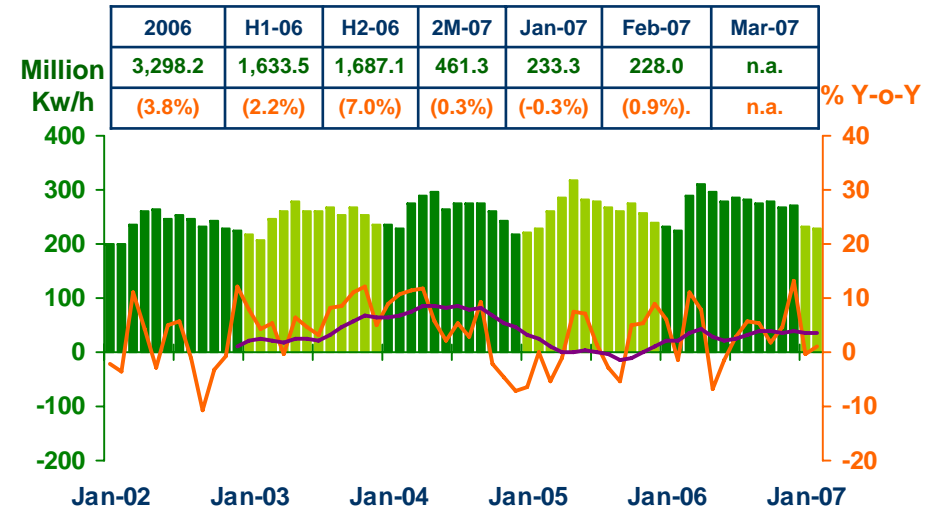
# PRIVATE CONSUMPTION

Economic Research Division, Northern Region Office

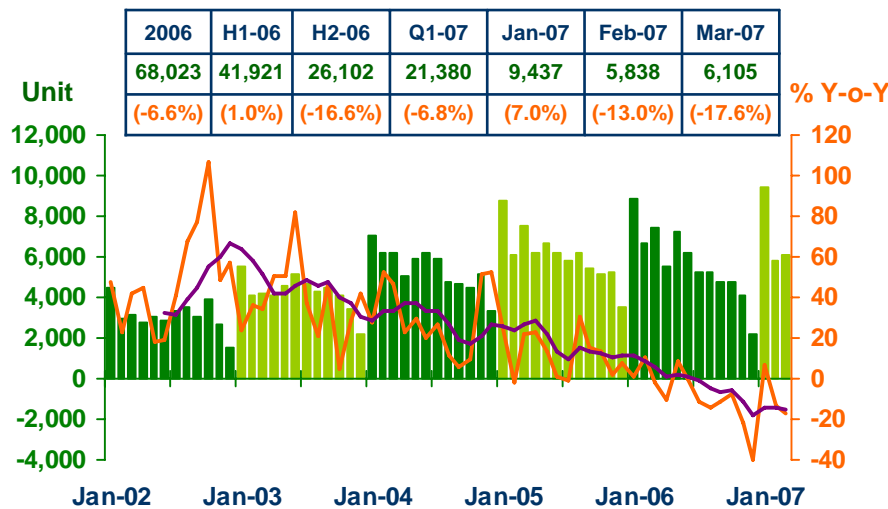
## VAT



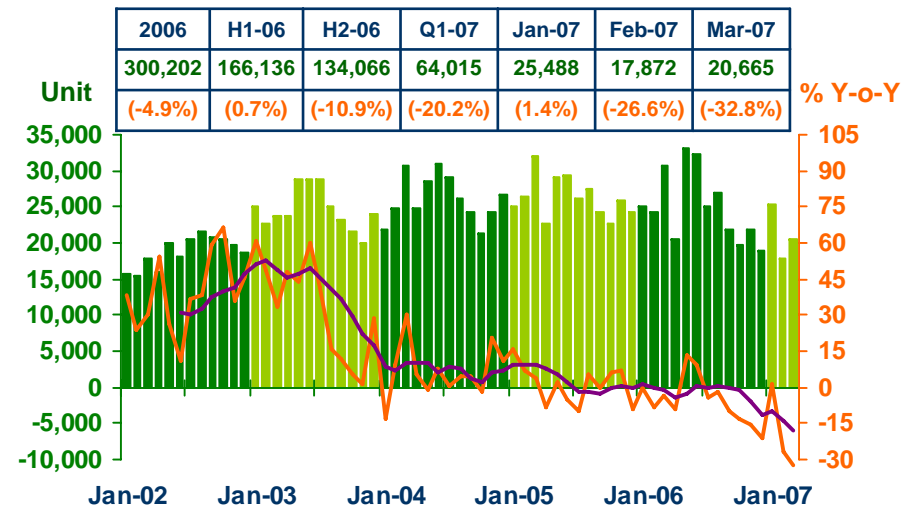
## Household electricity consumption



## Registered passenger car and registered commercial car



## Registered motorcycle

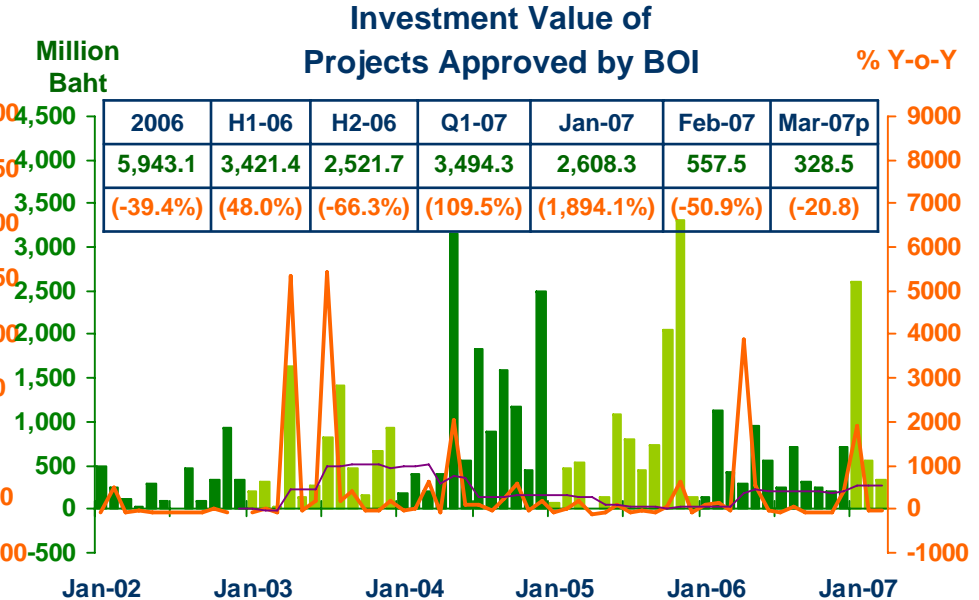
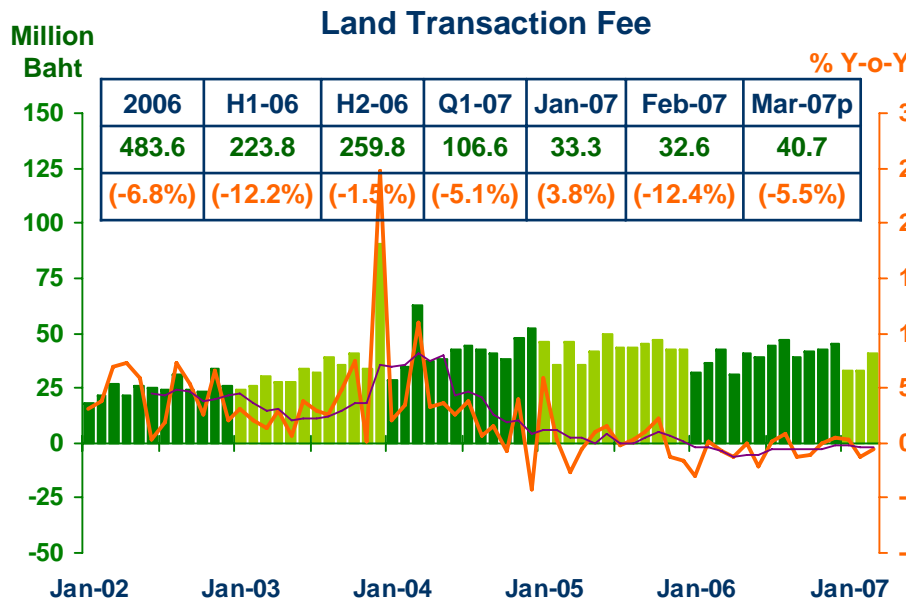
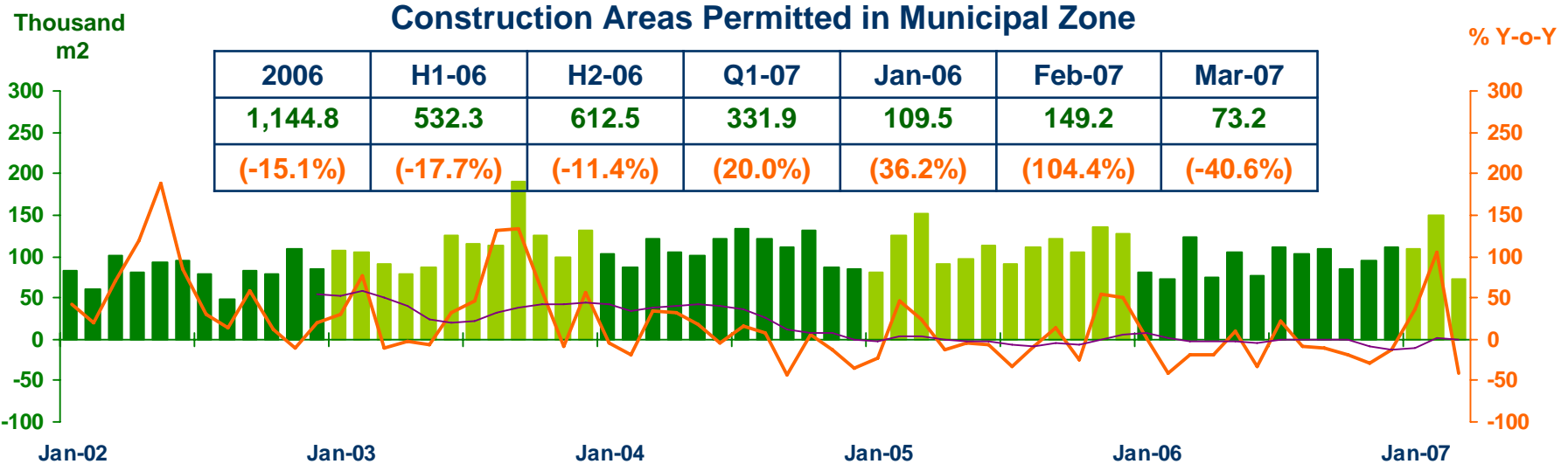


Sources: Ministry of Finance, Provincial Electricity Authority, and Provincial Land Transportation Offices



# PRIVATE INVESTMENT

Economic Research Division, Northern Region Office



Sources: Municipality Offices, Provincial Land Offices, and Northern Region Investment and Economic Center (BOI)

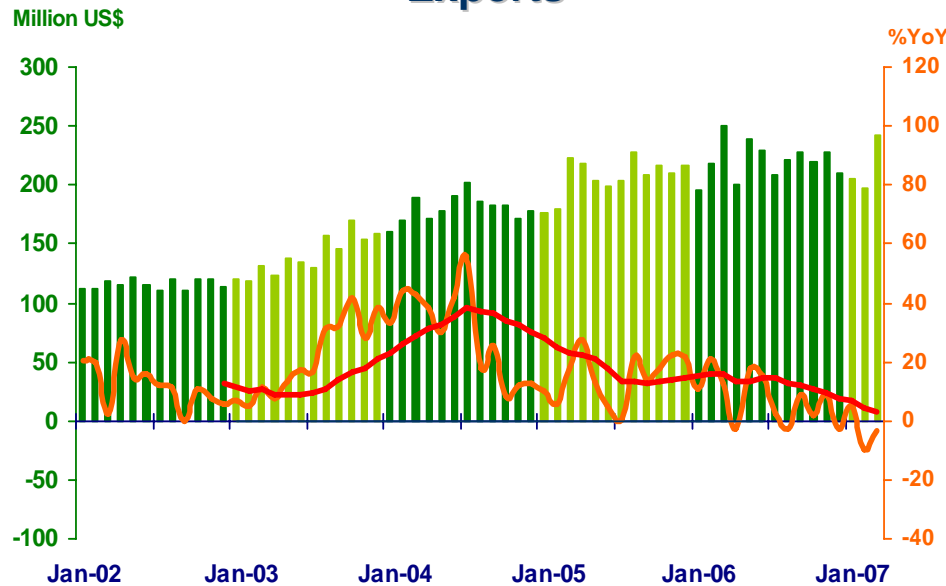


# FOREIGN TRADE

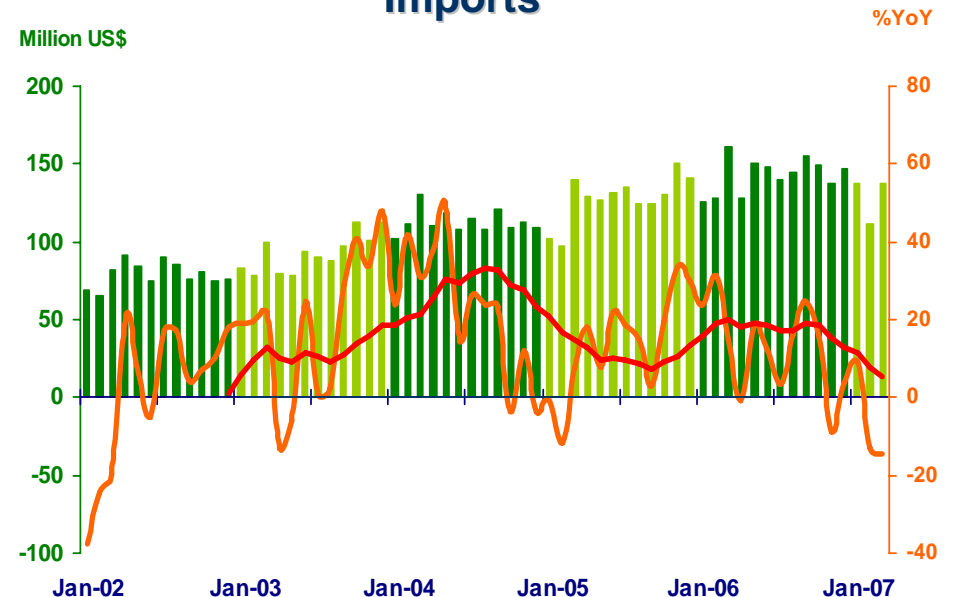
Economic Research Division, Northern Region Office

	2006	2006		2007			
		H1	H2	Q1	Jan	Feb	Mar
<b>EXPORTS</b>	<b>2,645.6</b>	<b>1,333.5</b>	<b>1,315.1</b>	<b>645.3</b>	<b>205.6</b>	<b>196.9</b>	<b>242.8</b>
	<b>(7.2%)</b>	<b>(12.3%)</b>	<b>(2.5%)</b>	<b>(-2.8%)</b>	<b>(5.3%)</b>	<b>(-9.5%)</b>	<b>(-3.3%)</b>
<b>IMPORTS</b>	<b>1,715.9</b>	<b>842.7</b>	<b>873.2</b>	<b>386.3</b>	<b>137.1</b>	<b>111.5</b>	<b>137.7</b>
	<b>(11.8%)</b>	<b>(15.7%)</b>	<b>(8.3%)</b>	<b>(-7.0%)</b>	<b>(8.9%)</b>	<b>(-13.2%)</b>	<b>(-14.5%)</b>
<b>TRADE BALANCE</b>	<b>932.7</b>	<b>490.8</b>	<b>441.8</b>	<b>259.0</b>	<b>68.5</b>	<b>85.4</b>	<b>105.1</b>

### Exports



### Imports

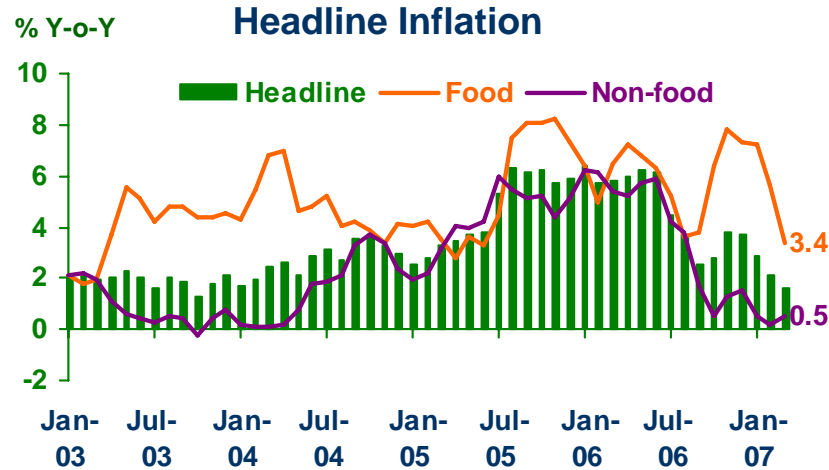


Source: Customs Department



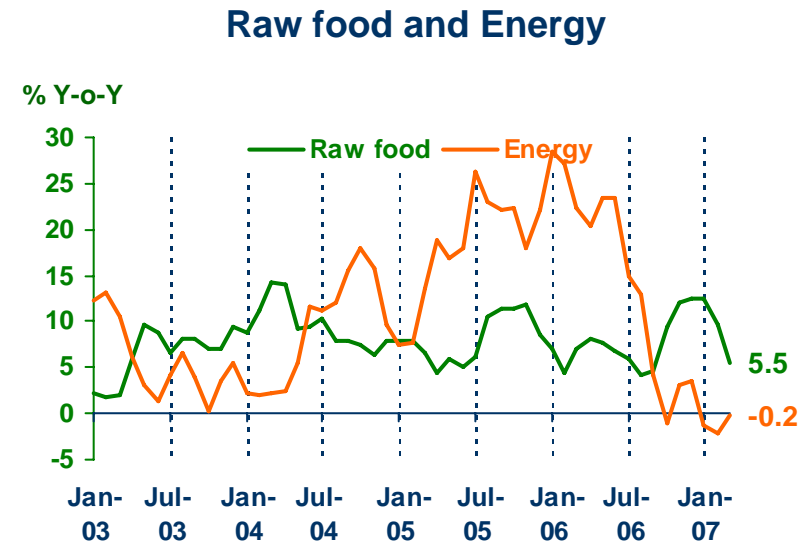
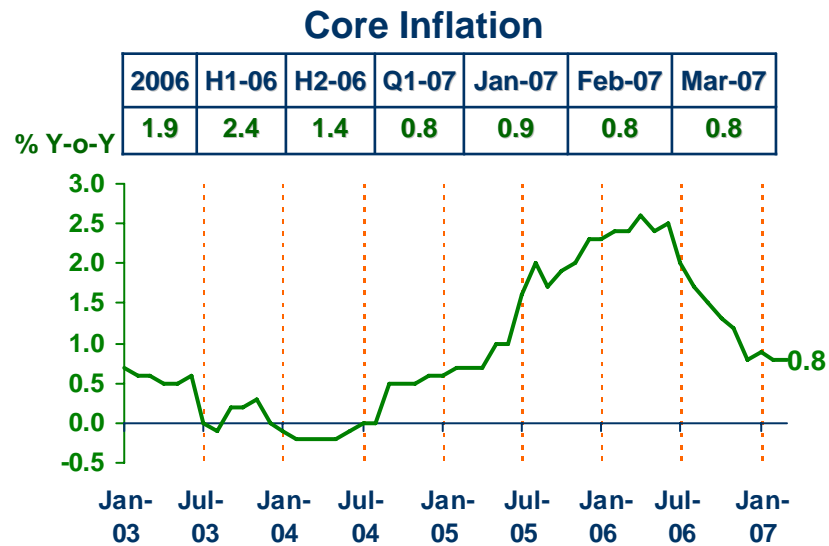
# PRICE LEVEL

Economic Research Division, Northern Region Office



### Headline inflation (2002 = 100)

%Y-o-Y	2006	H1-06	H2-06	Q1-07	Jan-07	Feb-07	Mar-07
Headline	4.7	6.0	3.5	2.2	2.9	2.1	1.6
Food	6.0	6.4	5.7	5.4	7.2	5.6	3.4
Non-food	3.9	5.8	2.2	0.4	0.5	0.2	0.5



Source: Bureau of Trade and Economic Indices, Ministry of Commerce



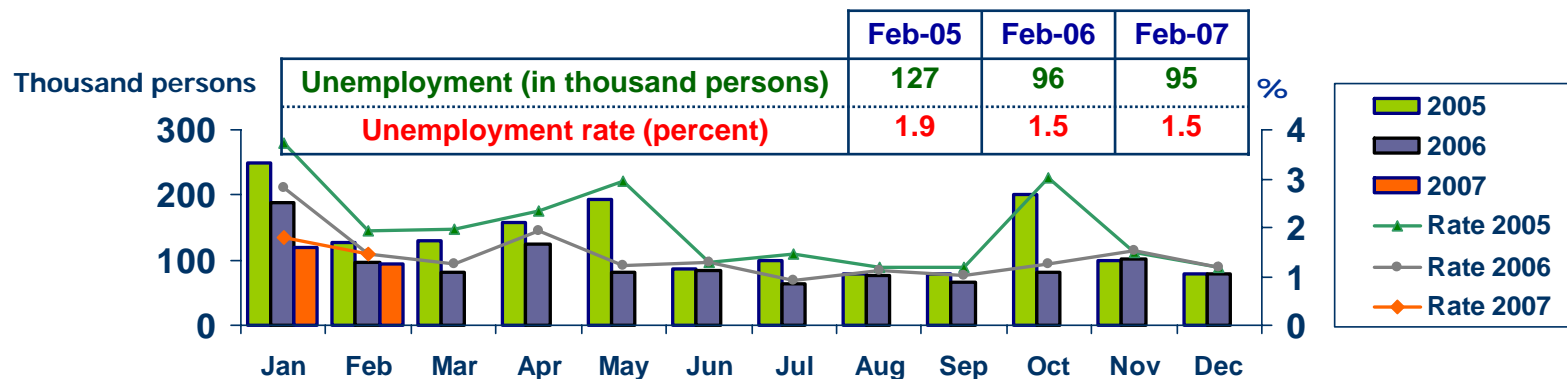


# LABOR FORCE SURVEY

Economic Research Division, Northern Region Office

	% of Total Labor Force (as of Feb 2007)	2006 ( $\Delta\%$ )	Q1-06 ( $\Delta\%$ )	Q2-06 ( $\Delta\%$ )	Q3-06 ( $\Delta\%$ )	Jan-07 ( $\Delta\%$ )	Feb-07 ( $\Delta\%$ )
<b>Labor Force (1,000 Persons)</b>	<b>100.0</b>	<b>6,741</b>	<b>6,520</b>	<b>6,526</b>	<b>6,503</b>	<b>6,625</b>	<b>6,523</b>
<b>Employed persons</b>	<b>98.0</b>	<b>0.3</b>	<b>-0.5</b>	<b>-1.4</b>	<b>-2.2</b>	<b>-0.3</b>	<b>-0.5</b>
• <b>Agriculture</b>	<b>44.5</b>	<b>4.5</b>	<b>5.6</b>	<b>5.0</b>	<b>-7.1</b>	<b>-2.7</b>	<b>5.1</b>
• <b>Non-agriculture</b>	<b>53.5</b>	<b>-4.4</b>	<b>-5.3</b>	<b>-7.5</b>	<b>3.0</b>	<b>1.9</b>	<b>-4.7</b>
- Wholesale & retail trade	13.8	1.7	-6.0	-7.9	12.8	2.4	1.6
- Manufacturing	11.5	-3.5	-9.3	-8.6	-14.0	10.2	-9.3
- Construction	6.6	-18.7	8.8	-13.6	13.5	5.6	-25.7
- Hotel & restaurants Services	5.8	-15.1	-13.1	-12.3	5.4	-22.2	5.6
- Others	15.8	-0.6	-6.1	-1.0	0.9	2.0	1.8
<b>Unemployed persons</b>	<b>1.5</b>	<b>1.2</b>	<b>-37.9</b>	<b>-1.8</b>	<b>-17.5</b>	<b>-36.6</b>	<b>-1.5</b>
<b>Seasonally inactive persons</b>	<b>0.5</b>	<b>236.1</b>	<b>-28.7</b>	<b>-55.8</b>	<b>13.1</b>	<b>111.4</b>	<b>-25.2</b>

## Unemployment



Source: National Statistical Office



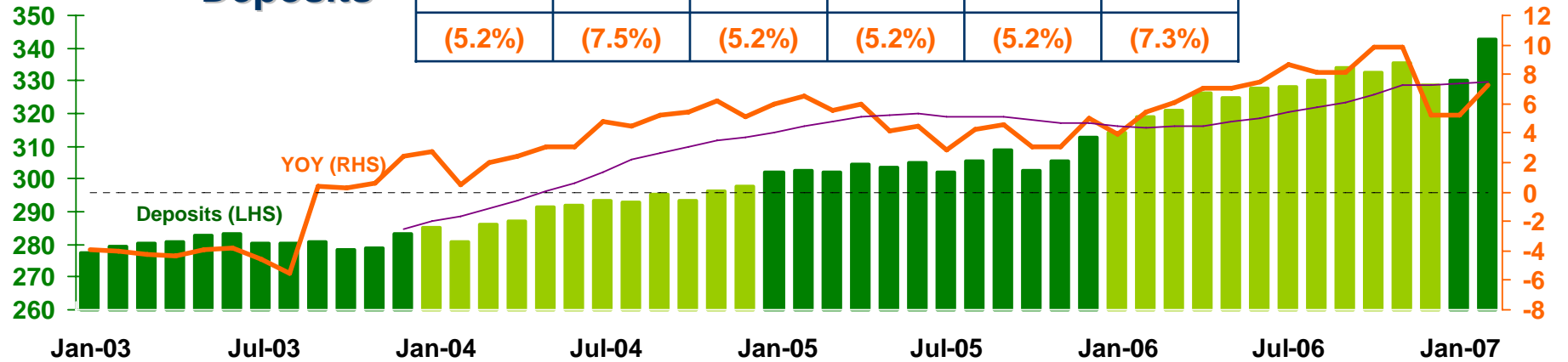
# DEPOSITS AND CREDITS OF COMMERCIAL BANKS

Economic Research Division, Northern Region Office

Billion Baht

## Deposits

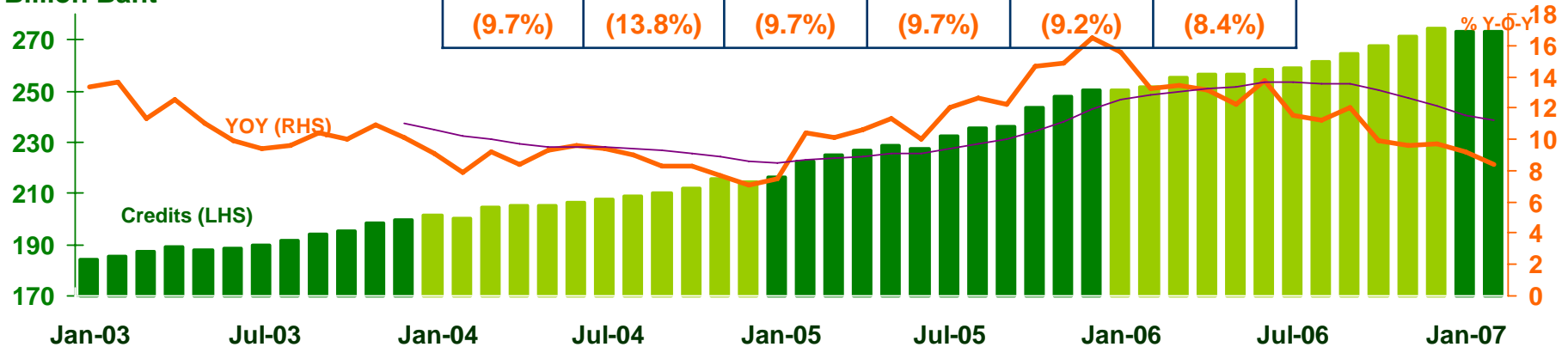
2006	H1-06	H2-06	Dec-06	Jan-07	Feb-07
328.7	327.5	328.7	328.7	330.3	342.5
(5.2%)	(7.5%)	(5.2%)	(5.2%)	(5.2%)	(7.3%)



Billion Baht

## Credits

2006	H1-06	H2-06	Dec-06	Jan-07	Feb-07
274.5	258.6	274.5	274.5	273.4	272.9
(9.7%)	(13.8%)	(9.7%)	(9.7%)	(9.2%)	(8.4%)



Source: Bank of Thailand