



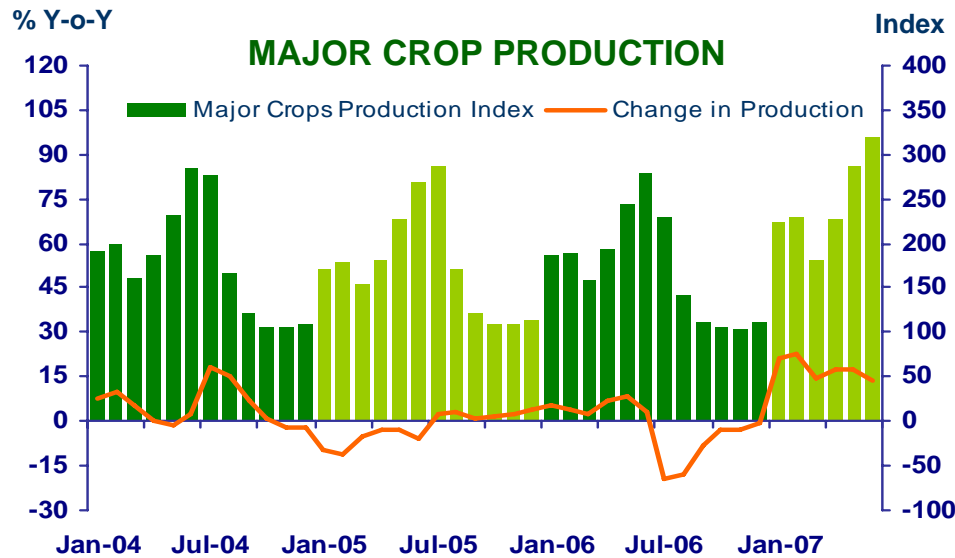
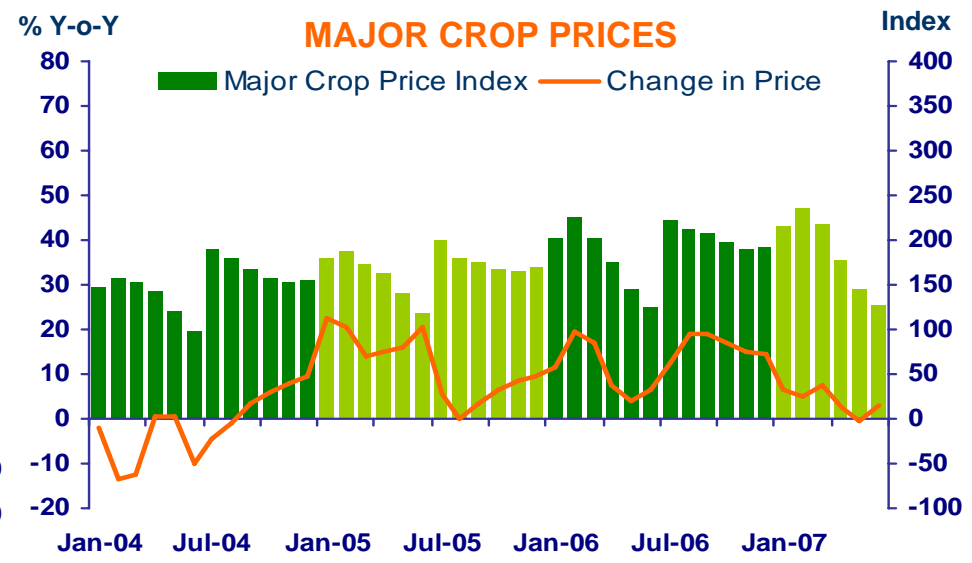
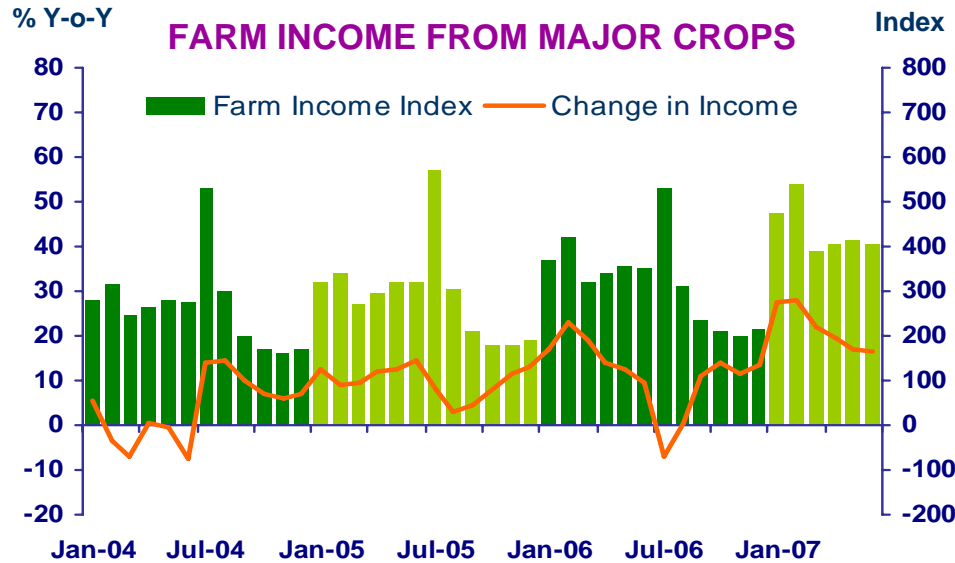
***Press Release on Northern Region Economic Conditions
in June 2007 And in The First Half of 2007***

Bank of Thailand, Northern Region Office



FARM INCOME FROM MAJOR CROPS

Economic Research Division, Northern Region Office



CHANGE IN FARM INCOME FROM MAJOR CROPS, MAJOR CROP PRODUCTION AND MAJOR CROP PRICES

△ % (Y-O-Y)	2006	2007				
		Q1	Q2	H1	May	Jun
Farm Income	13.0	25.2	18.7	22.9	17.0	16.7
Production	-1.7	18.5	16.8	17.7	17.5	13.9
Price	14.7	6.7	1.9	5.2	-0.5	2.8

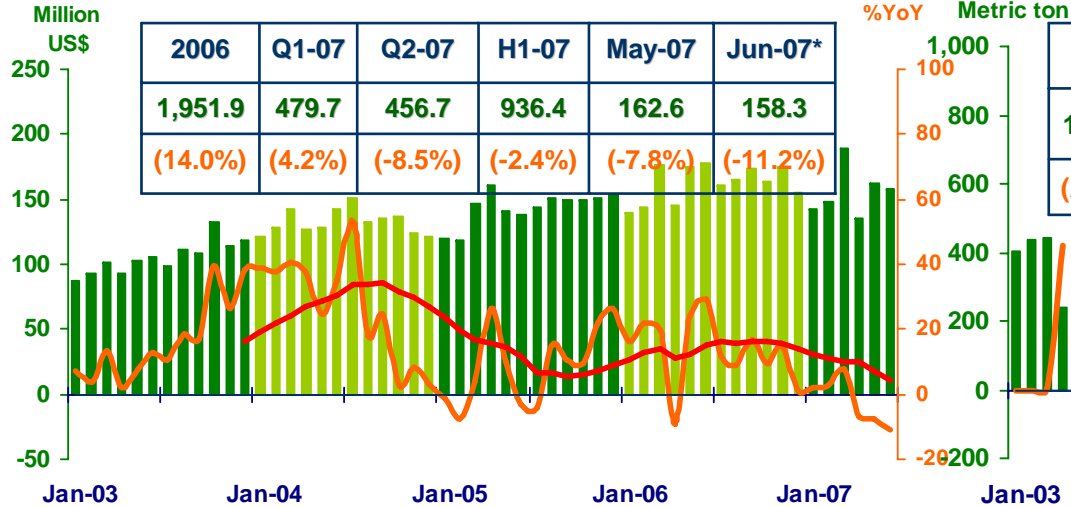
Source: Index constructed using data from Ministry of Agriculture and Co-operatives (1988 =100).



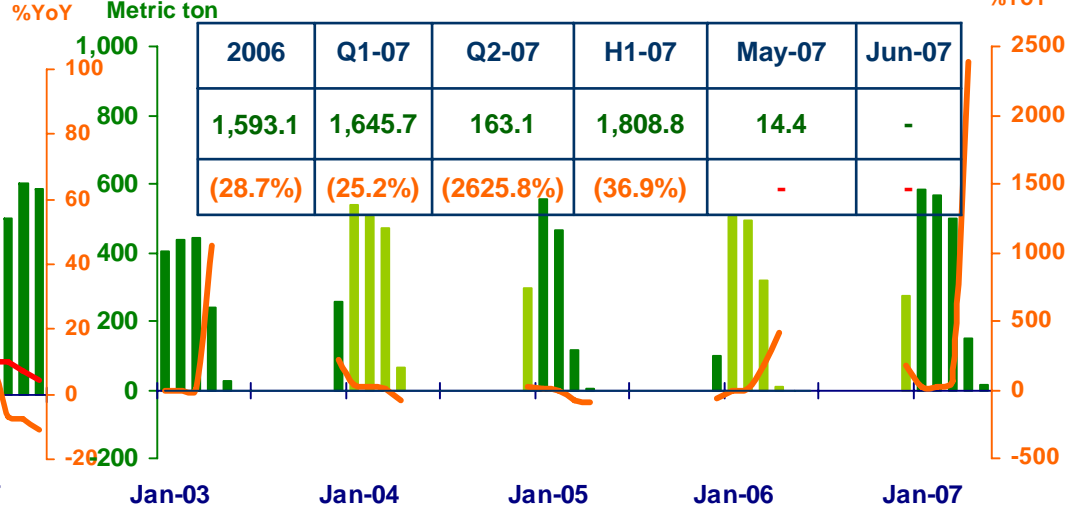
MANUFACTURING

Economic Research Division, Northern Region Office

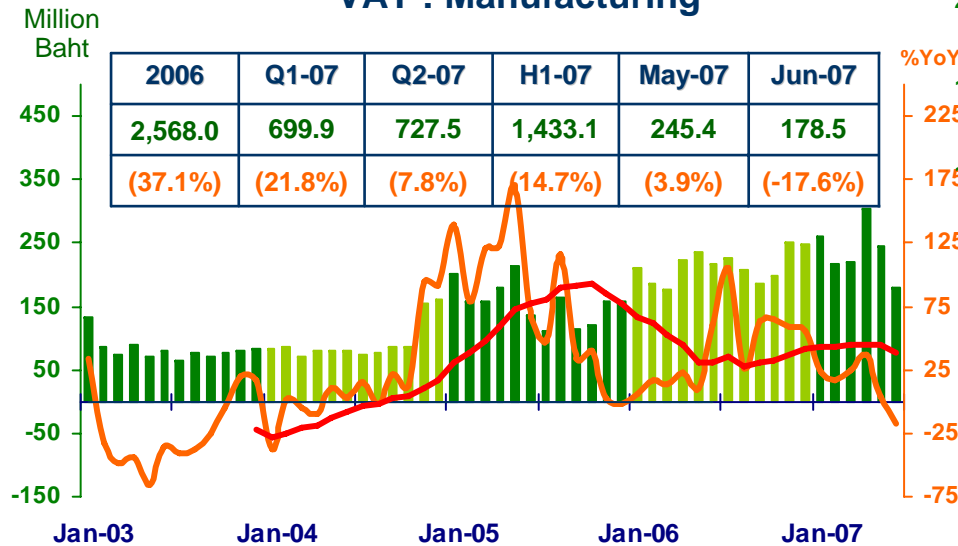
Export value by Northern Region Industrial Estate



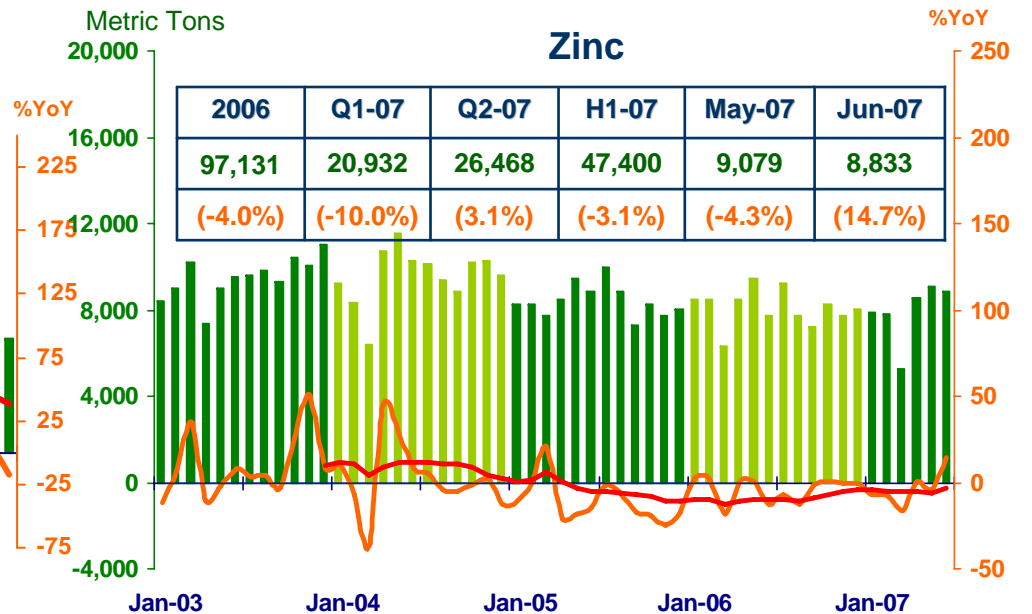
Sugar



VAT : Manufacturing



Zinc



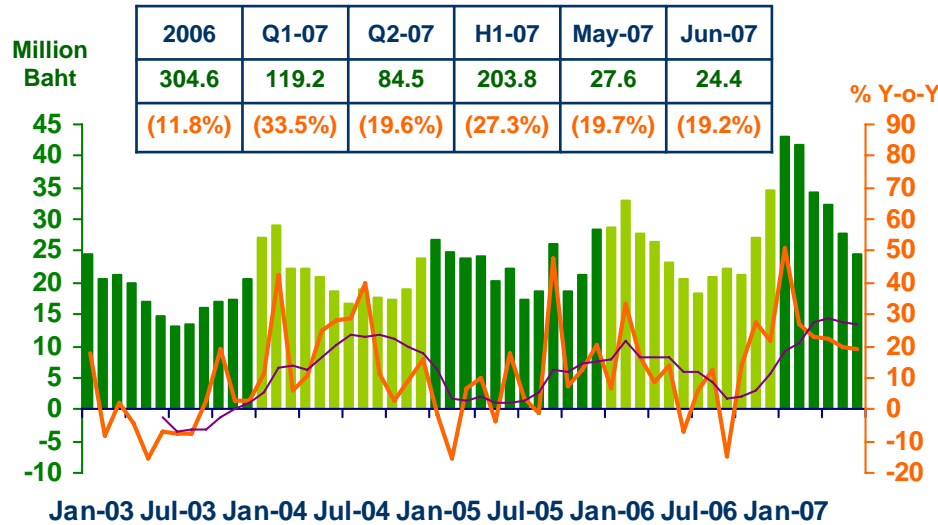
Sources: Customs Department, Thai Cane and Sugar Cooperation Co., Ltd, Pa-Dang Industry Co., Ltd., and Ministry of Finance



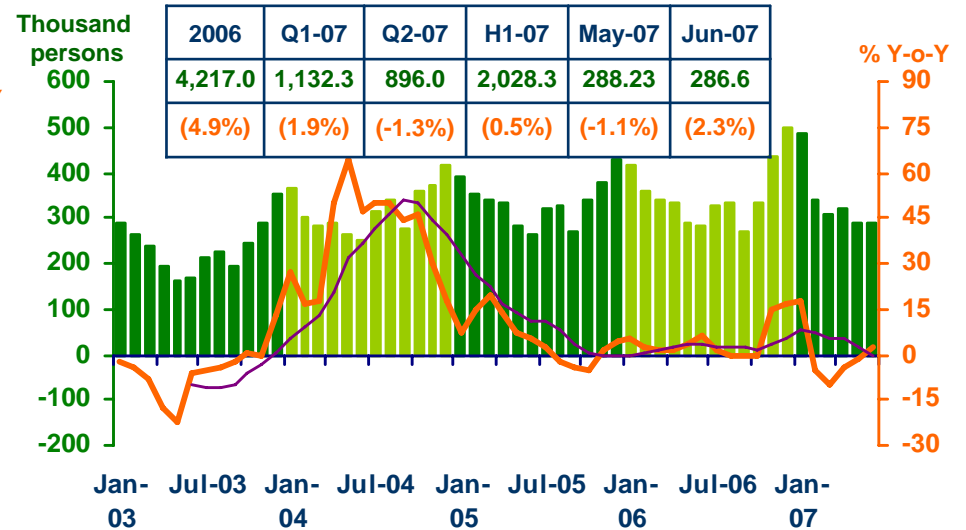
SERVICES

Economic Research Division, Northern Region Office

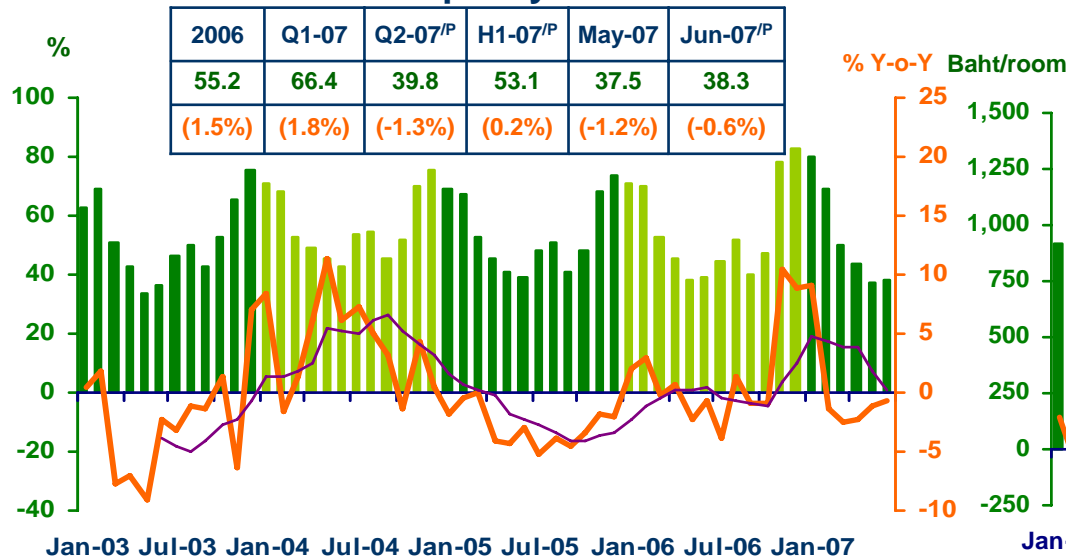
Hotel and restaurant VAT



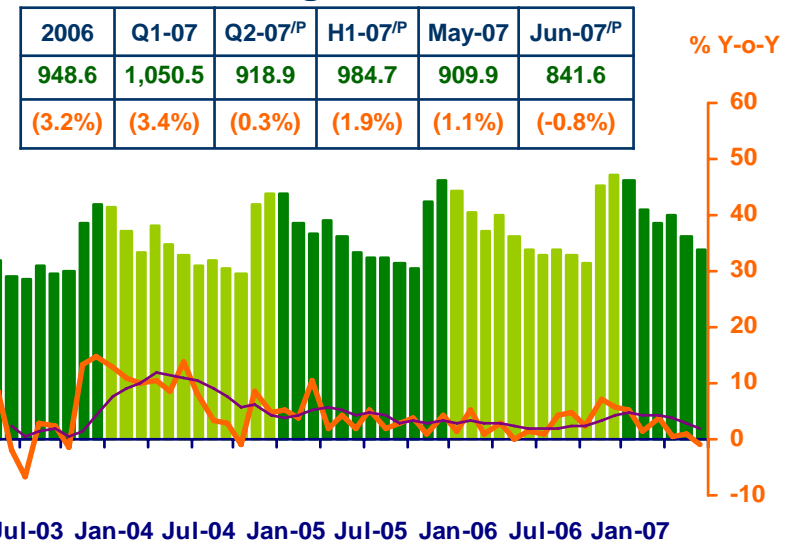
Air passengers



Hotel occupancy rate



Hotel average room rate



Sources: Ministry of Finance; Airports of Thailand Plc.; and Data Management Group, Bank of Thailand

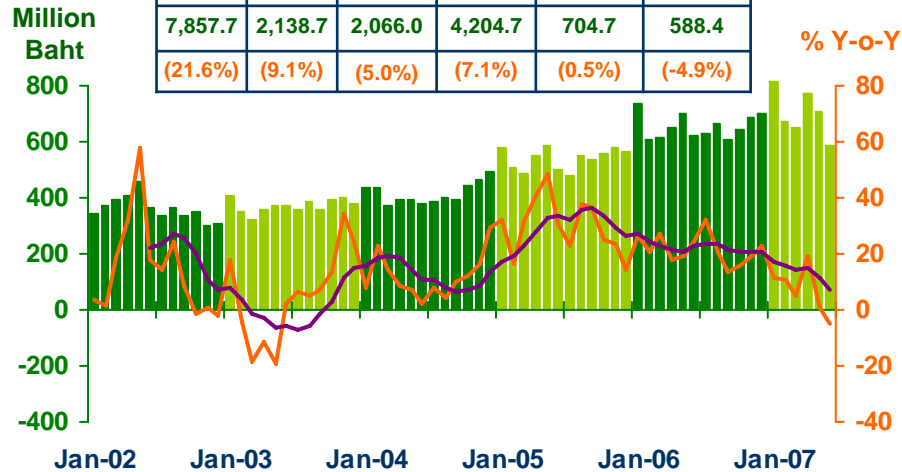


PRIVATE CONSUMPTION

Economic Research Division, Northern Region Office

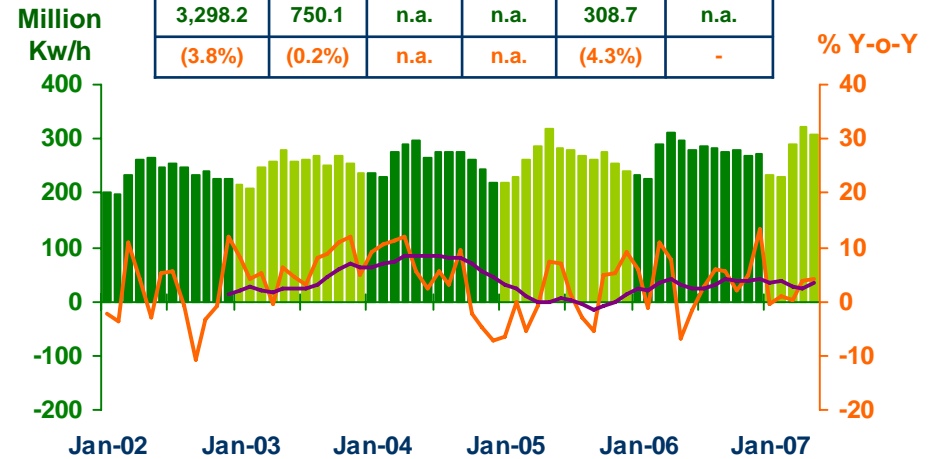
VAT

2006	Q1-07	Q2-07p	H1-07p	May-07	Jun-07p
7,857.7	2,138.7	2,066.0	4,204.7	704.7	588.4
(21.6%)	(9.1%)	(5.0%)	(7.1%)	(0.5%)	(-4.9%)



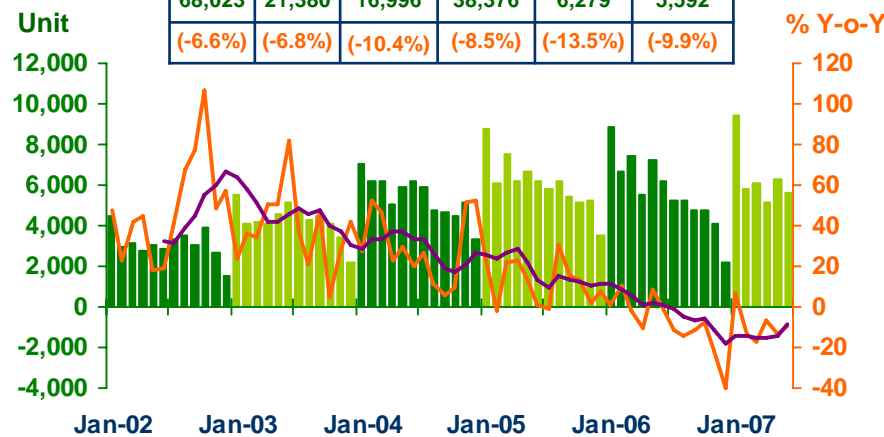
Household electricity consumption

2006	Q1-07	Q2-07	H1-07	May-07	Jun-07
3,298.2	750.1	n.a.	n.a.	308.7	n.a.
(3.8%)	(0.2%)	n.a.	n.a.	(4.3%)	-



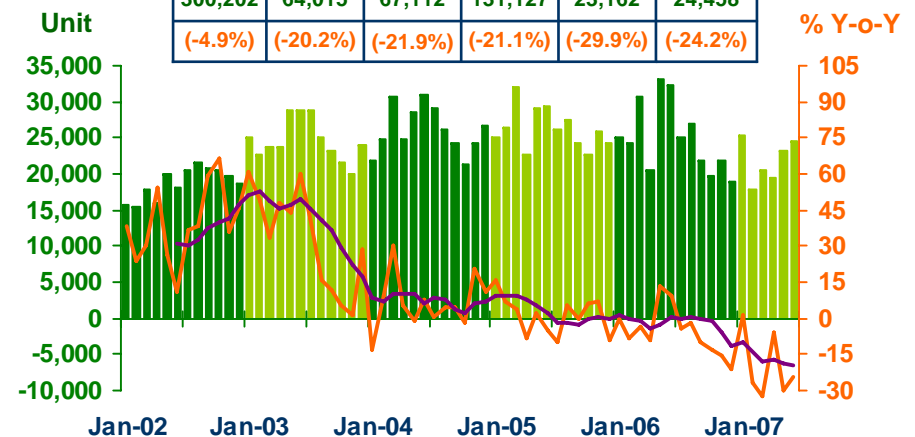
Registered passenger car and registered commercial car

2006	Q1-07	Q2-07p	H1-07p	May-07	Jun-07p
68,023	21,380	16,996	38,376	6,279	5,592
(-6.6%)	(-6.8%)	(-10.4%)	(-8.5%)	(-13.5%)	(-9.9%)



Registered motorcycle

2006	Q1-07	Q2-07p	H1-07p	May-07	Jun-07p
300,202	64,015	67,112	131,127	23,162	24,458
(-4.9%)	(-20.2%)	(-21.9%)	(-21.1%)	(-29.9%)	(-24.2%)



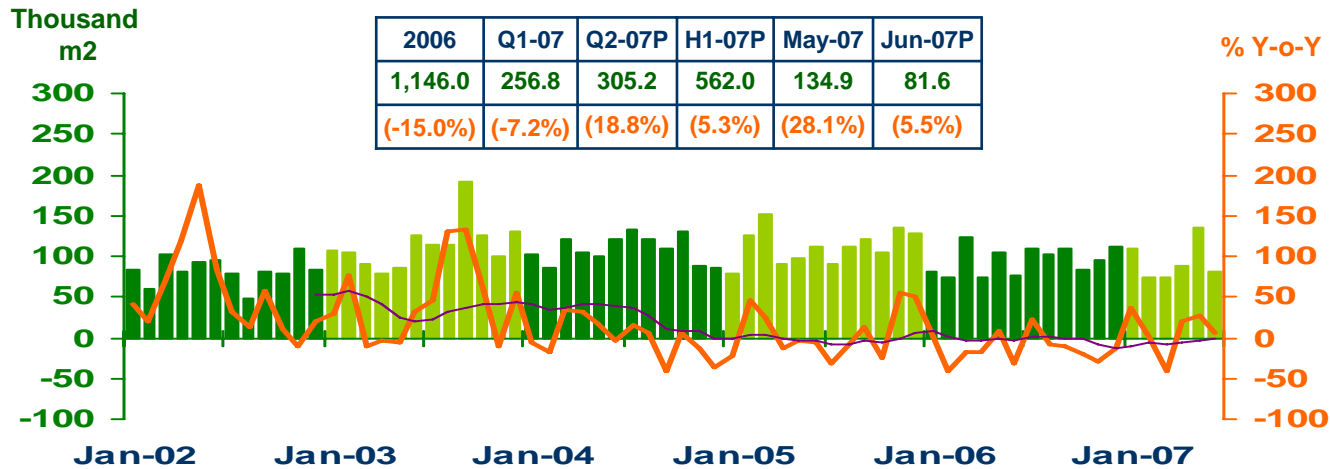
Sources: Ministry of Finance, Provincial Electricity Authority, and Provincial Land Transportation Offices



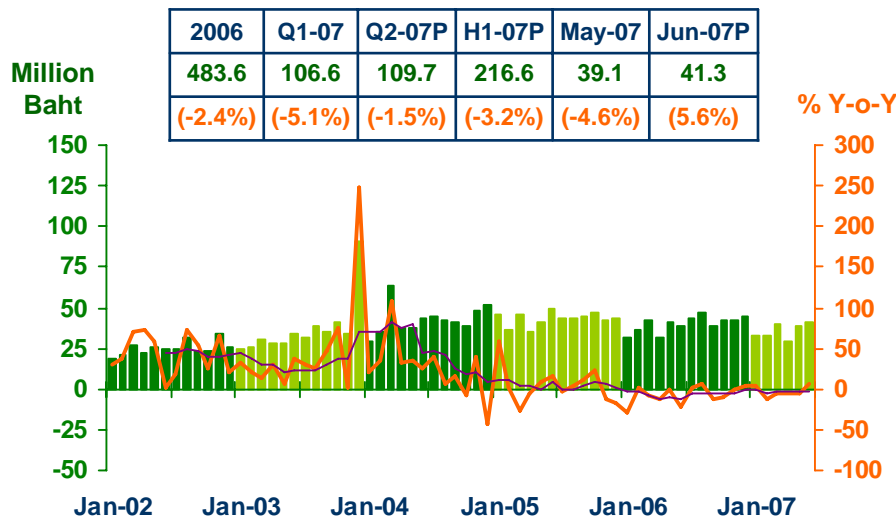
PRIVATE INVESTMENT

Economic Research Division, Northern Region Office

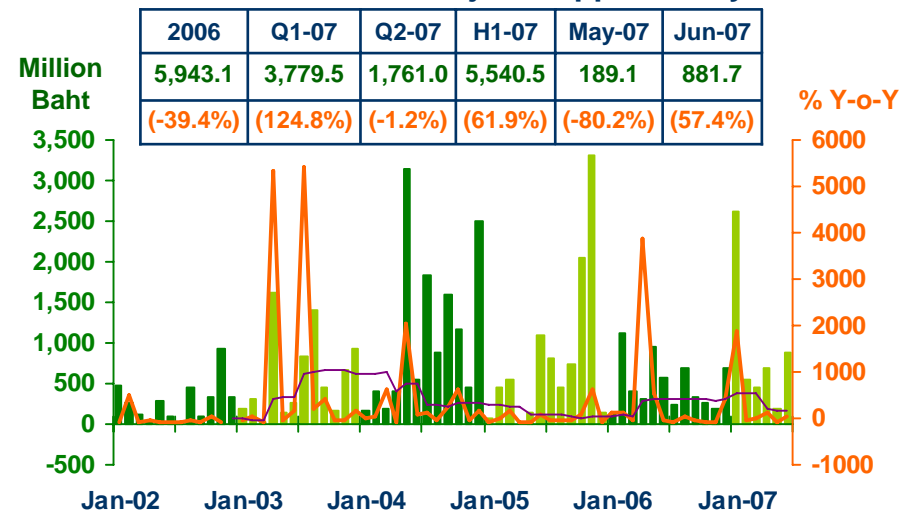
Construction Areas Permitted in Municipal Zone



Land Transaction Fee



Investment Value of Projects Approved by BOI



Sources: Municipality Offices, Provincial Land Offices, and Northern Region Investment and Economic Center (BOI)

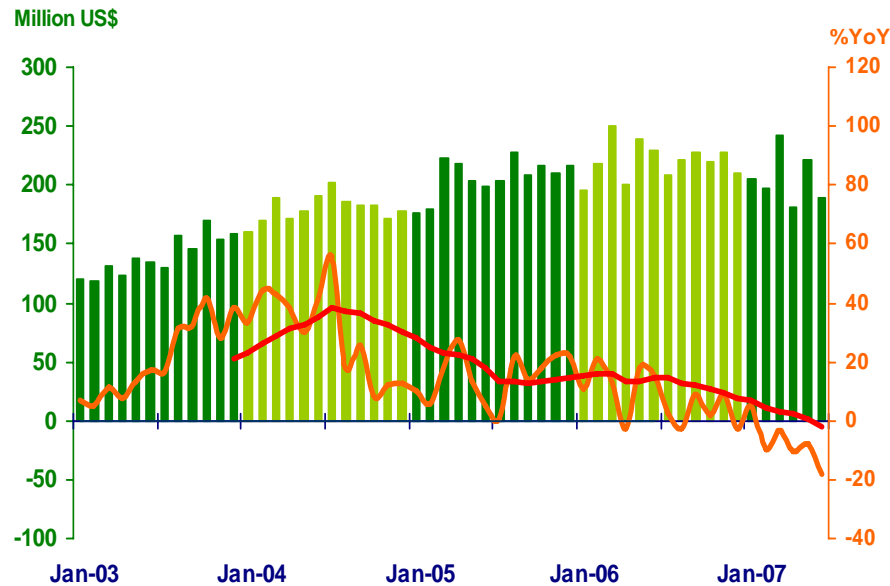


FOREIGN TRADE

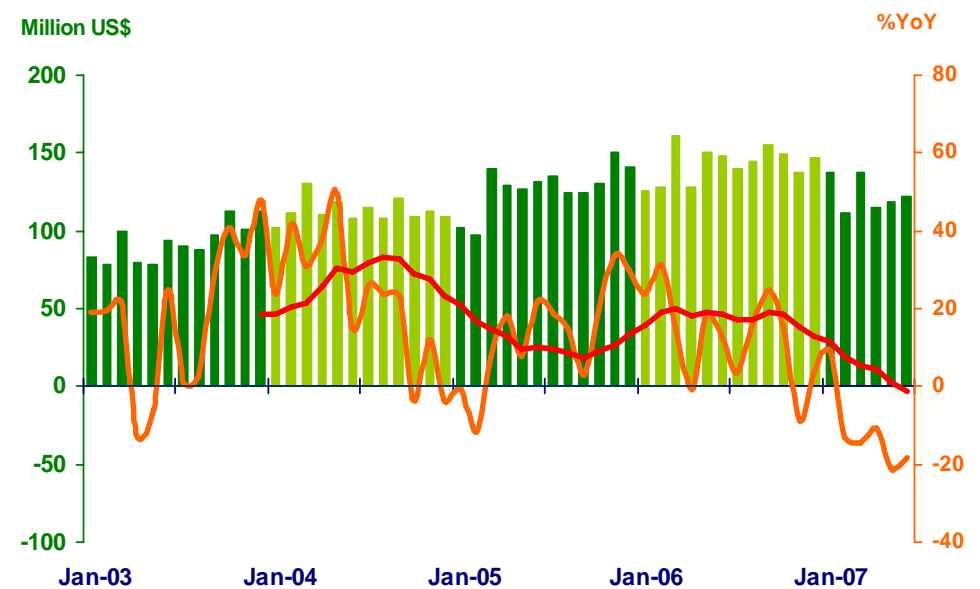
Economic Research Division, Northern Region Office

	2006	2007				
		Q1	Q2	H1	May	Jun
EXPORTS	2,645.6	645.3	590.0	1,235.3	220.7	188.9
	(7.2%)	(-2.8%)	(-11.9%)	(-7.4%)	(-7.6%)	(-17.9%)
IMPORTS	1,715.9	386.3	354.6	740.9	118.3	121.5
	(11.8%)	(-7.0%)	(-17.0%)	(-12.1%)	(-21.3%)	(-18.2%)
TRADE BALANCE	932.7	259.0	235.4	494.4	102.4	67.4

Exports



Imports



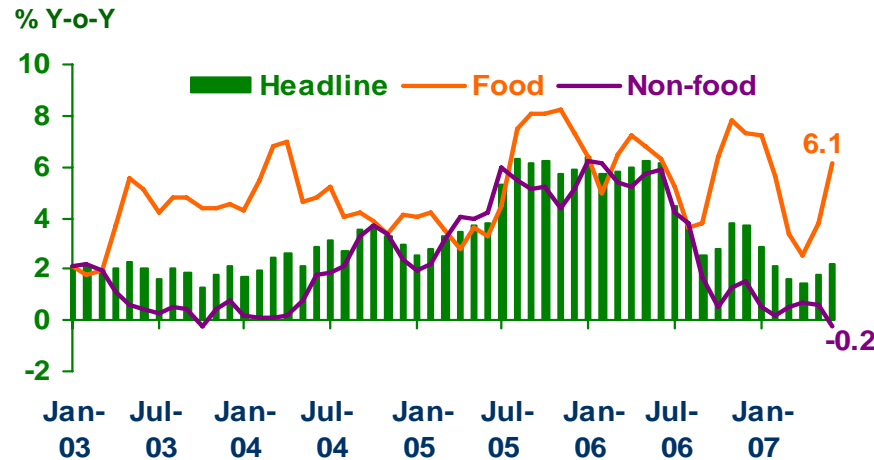
Source: Customs Department



PRICE LEVEL

Economic Research Division, Northern Region Office

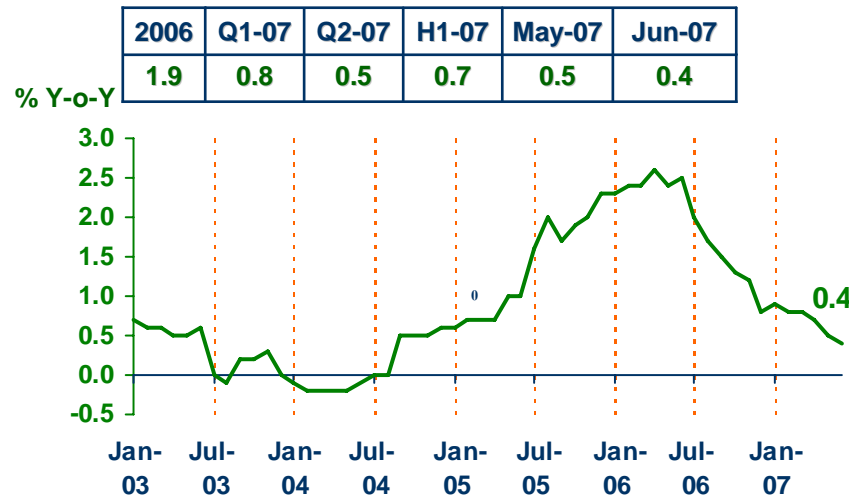
Headline Inflation



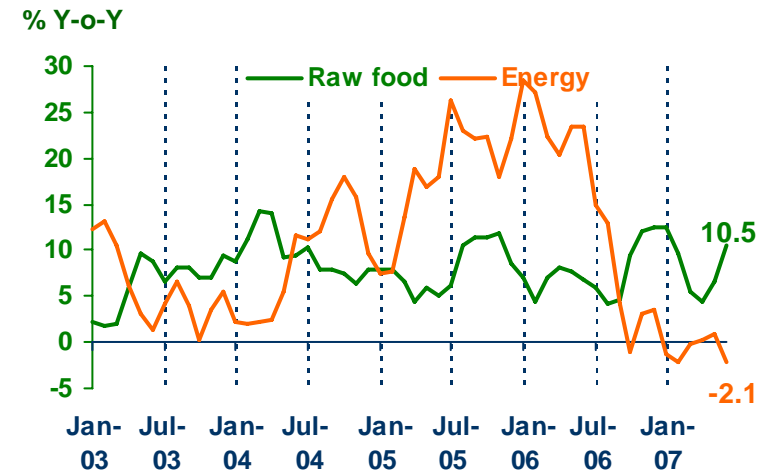
Headline inflation (2002 = 100)

%Y-o-Y	2006	Q1-07	Q2-07	H1-07	May-07	Jun-07
Headline	4.7	2.2	1.8	2.0	1.8	2.2
Food	6.0	5.4	4.1	4.7	3.8	6.1
Non-food	3.9	0.4	0.4	0.4	0.6	-0.2

Core Inflation



Raw food and Energy



Source: Bureau of Trade and Economic Indices, Ministry of Commerce

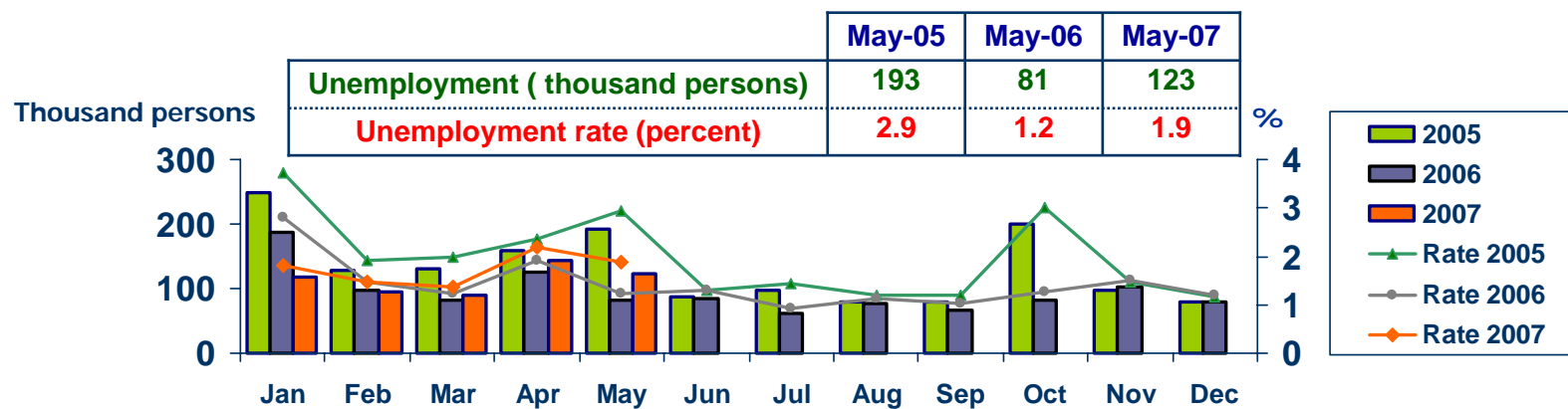


LABOR FORCE SURVEY

Economic Research Division, Northern Region Office

	% of Total Labor Force (as of May 2007)	2006 ($\Delta\%$)	Q1-06 ($\Delta\%$)	Q2-06 ($\Delta\%$)	Q3-06 ($\Delta\%$)	Apr-07 ($\Delta\%$)	May-07 ($\Delta\%$)
Labor Force (1,000 Persons)	100.0	6,741	6,520	6,526	6,503	6,617	6,549
Employed persons	97.3	0.3	-0.5	-1.4	-2.2	1.1	-2.4
• Agriculture	45.5	4.5	5.6	5.0	-7.1	-1.9	1.0
• Non-agriculture	51.8	-4.4	-5.3	-7.5	3.0	3.7	-5.2
- Wholesale & retail trade	14.1	1.7	-6.0	-7.9	12.8	-3.5	-5.6
- Manufacturing	10.8	-3.5	-9.3	-8.6	-14.0	13.9	-4.1
- Construction	6.0	-18.7	8.8	-13.6	13.5	-0.5	-21.4
- Hotel & restaurants Services	5.6	-15.1	-13.1	-12.3	5.4	14.8	-1.2
- Others	15.3	-0.6	-6.1	-1.0	0.9	2.2	1.2
Unemployed persons	1.9	1.2	-37.9	-1.8	-17.5	15.3	52.1
Seasonally inactive persons	0.8	236.1	-28.7	-55.8	13.1	0.2	64.3

Unemployment



Source: National Statistical Office



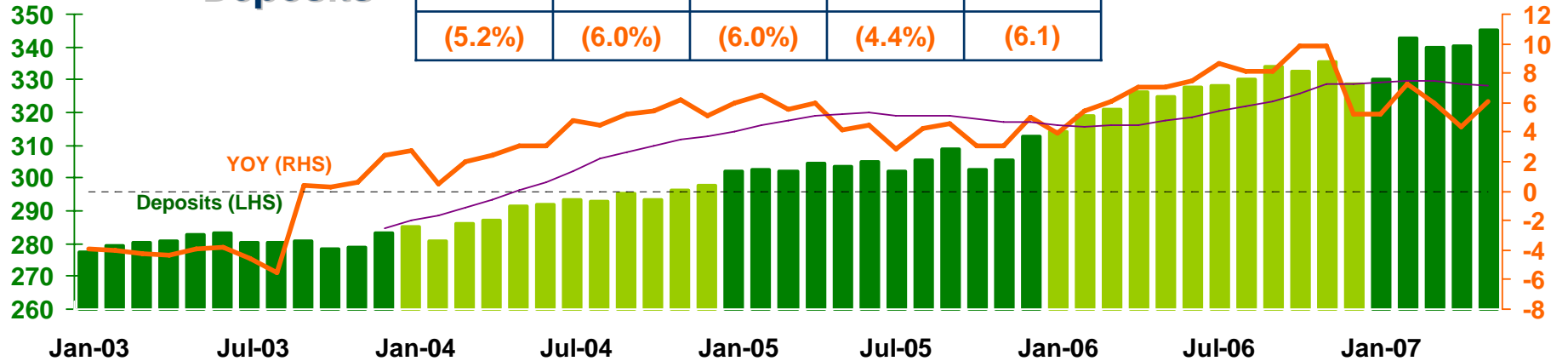
DEPOSITS AND CREDITS OF COMMERCIAL BANKS

Economic Research Division, Northern Region Office

Billion Baht

Deposits

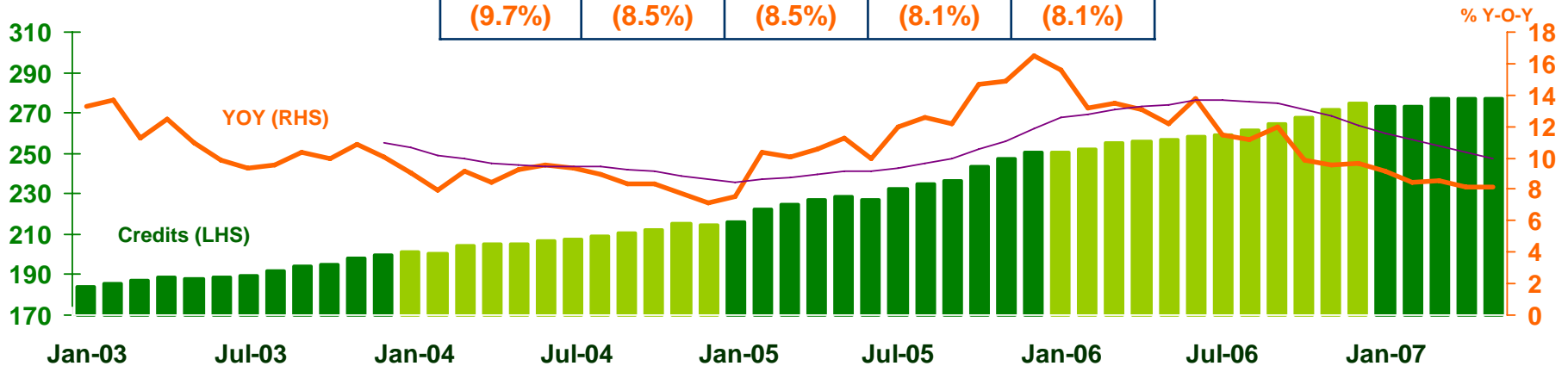
2006	Q1-07	Mar-07	Apr-07	May-07
328.7	339.9	339.9	340.5	345.0
(5.2%)	(6.0%)	(6.0%)	(4.4%)	(6.1)



Billion Baht

Credits

2006	Q1-07	Mar-07	Apr-07	May-07
274.5	277.2	277.2	277.1	277.3
(9.7%)	(8.5%)	(8.5%)	(8.1%)	(8.1%)



Source: Bank of Thailand