



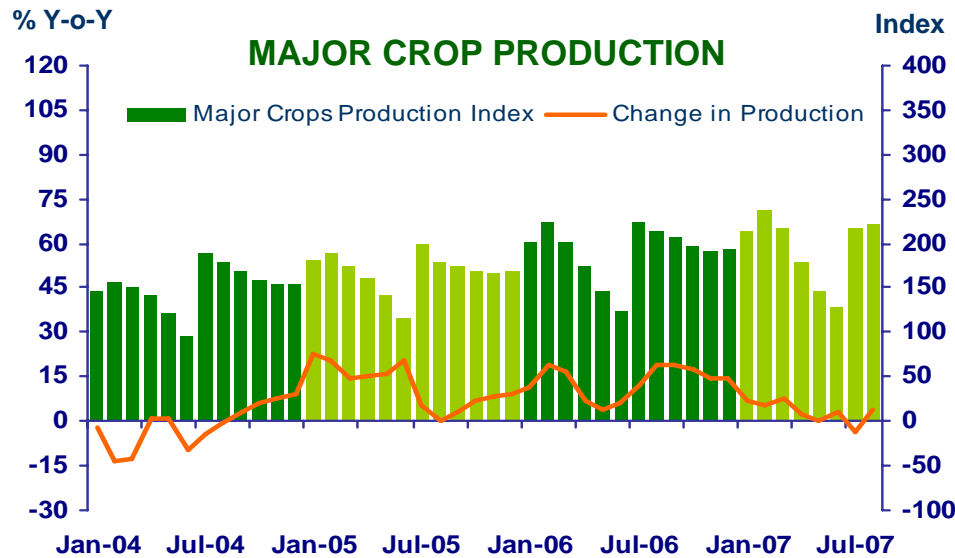
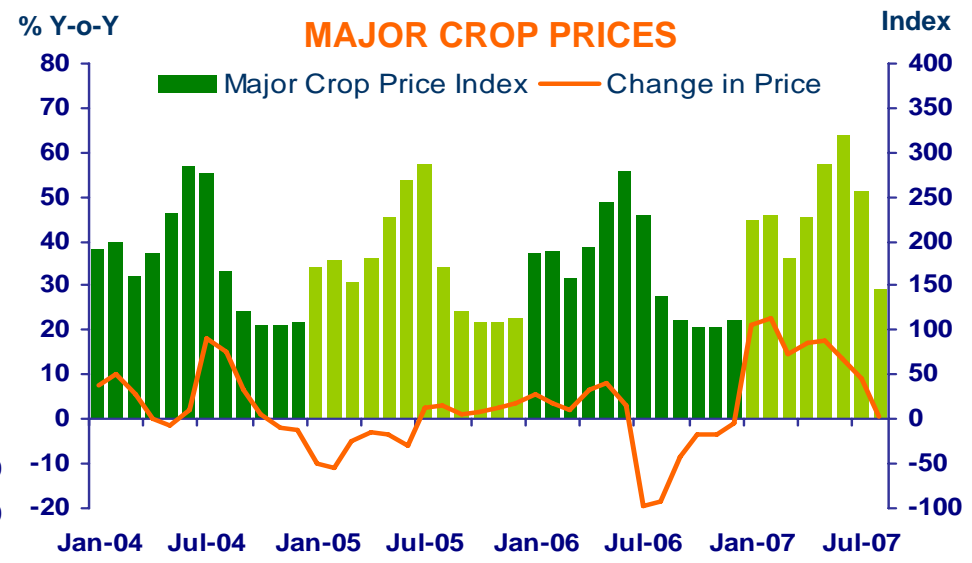
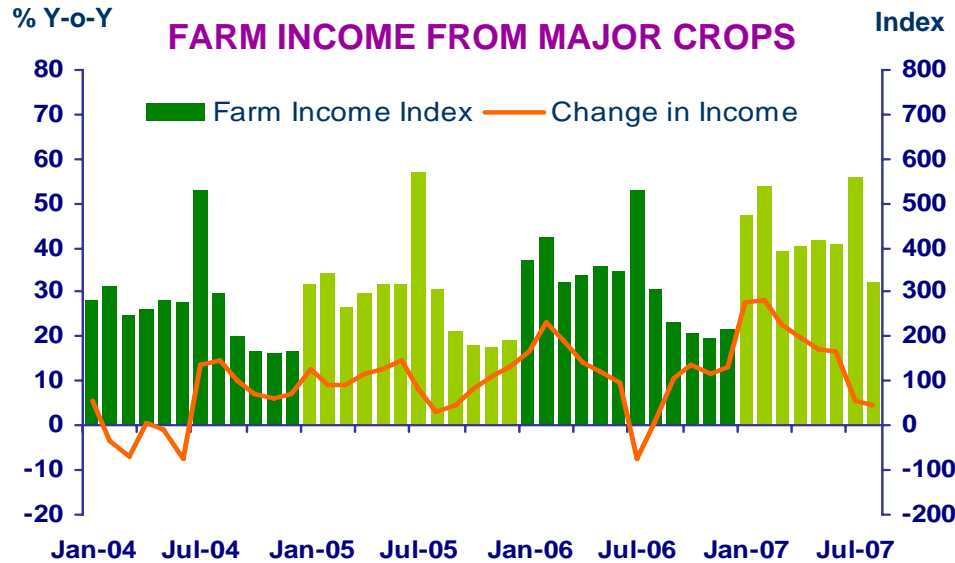
***Press Release on  
Northern Region Economic Conditions in August 2007***

***Bank of Thailand, Northern Region Office***



# FARM INCOME FROM MAJOR CROPS

Economic Research Division, Northern Region Office



**CHANGE IN FARM INCOME FROM MAJOR CROPS, MAJOR CROP PRODUCTION AND MAJOR CROP PRICES**

△ % (Y-O-Y)	2006	2007				
		Q1	Q2	H1	Jul	Aug
Farm Income	12.9	25.4	19.0	23.2	5.4	4.8
Production	-1.8	18.5	16.8	17.7	9.1	0.7
Price	14.7	6.9	2.2	5.5	-3.7	4.1

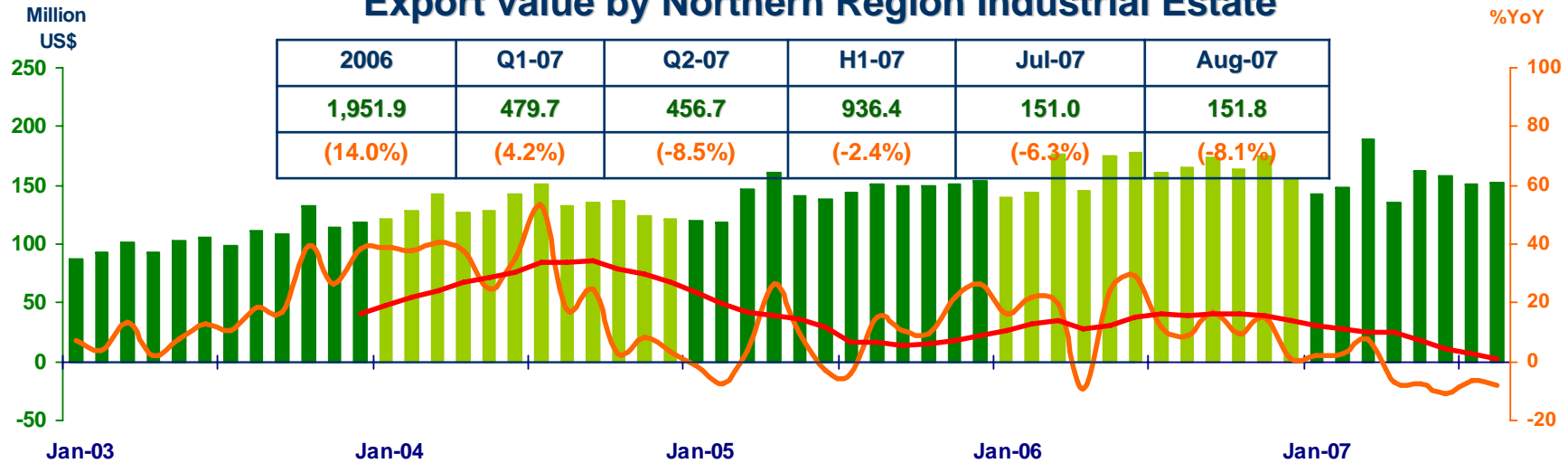
Source: Index constructed using data from Ministry of Agriculture and Co-operatives (1988 =100).



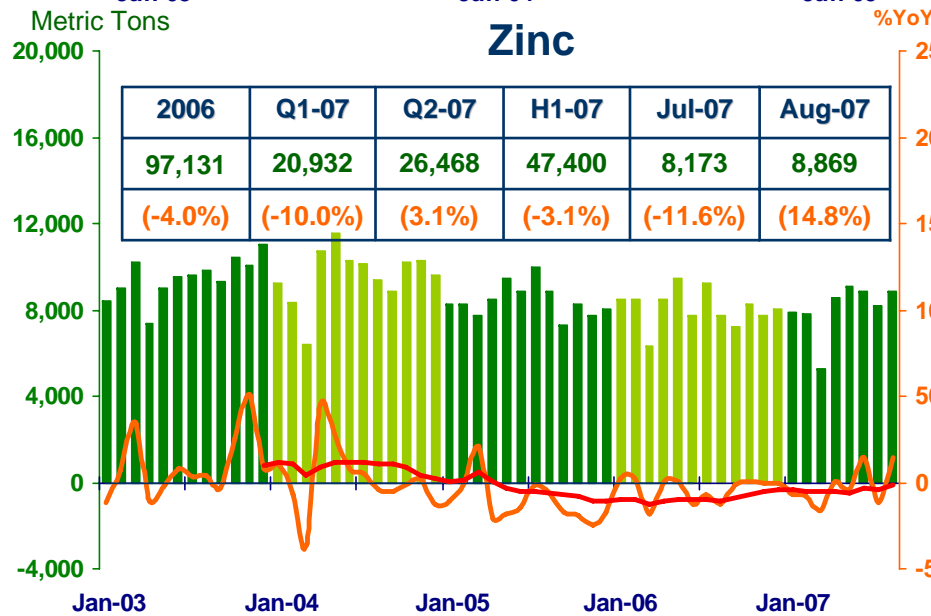
# MANUFACTURING

Economic Research Division, Northern Region Office

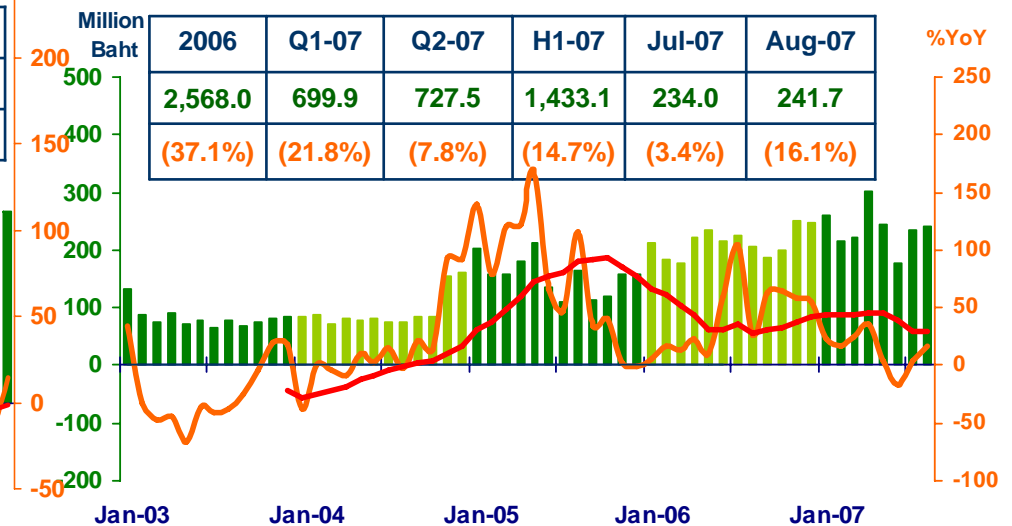
## Export value by Northern Region Industrial Estate



## Zinc



## Vat : Manufacturing



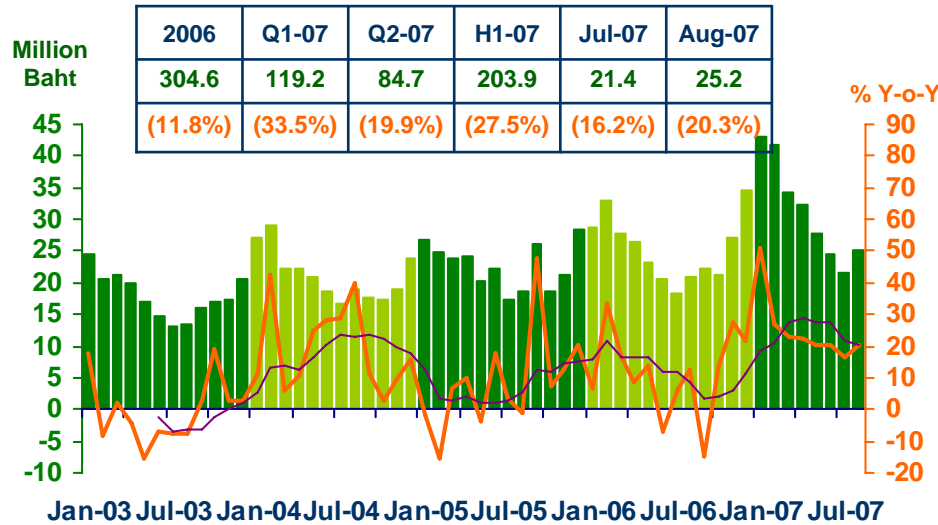
Sources: Lamphun Customs House, Ministry of Finance



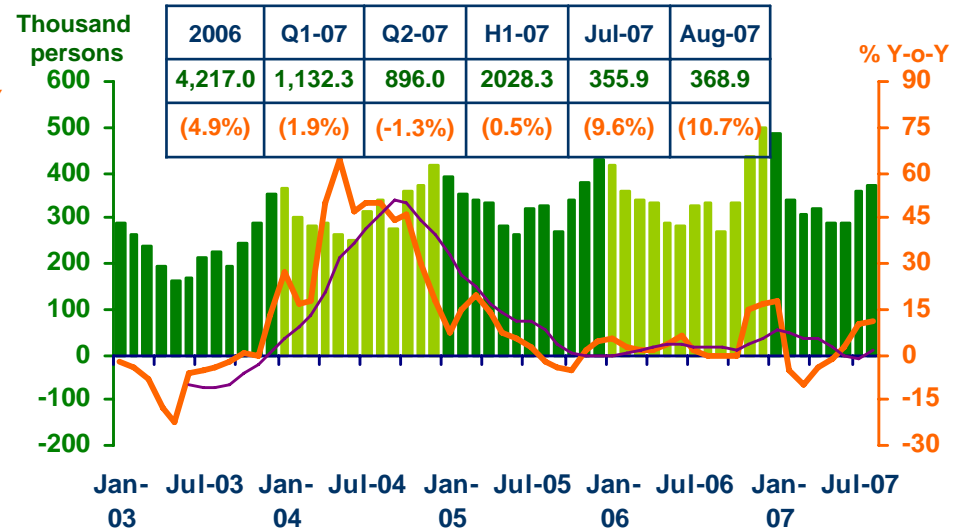
# SERVICES

Economic Research Division, Northern Region Office

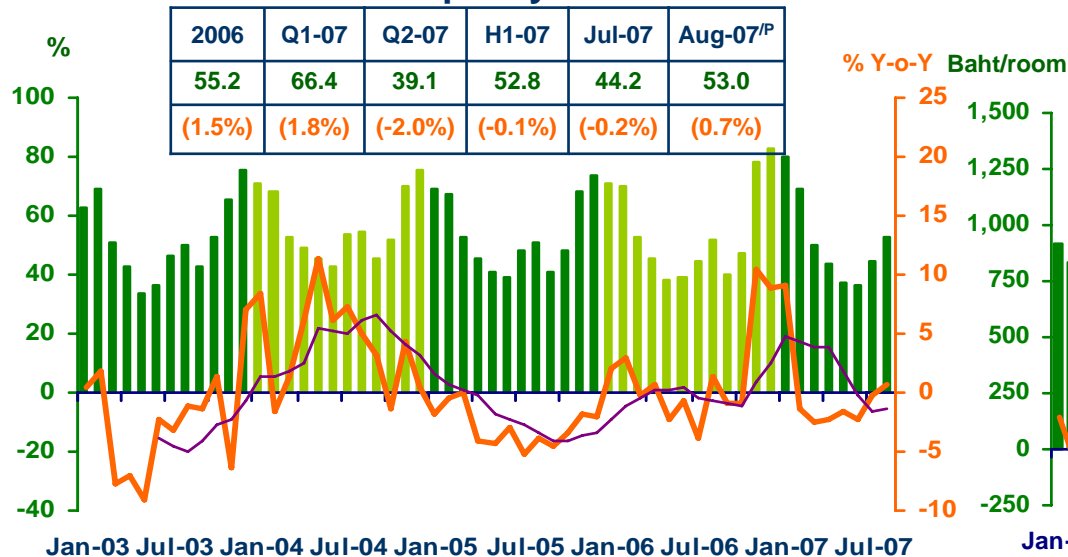
### Hotel and restaurant VAT



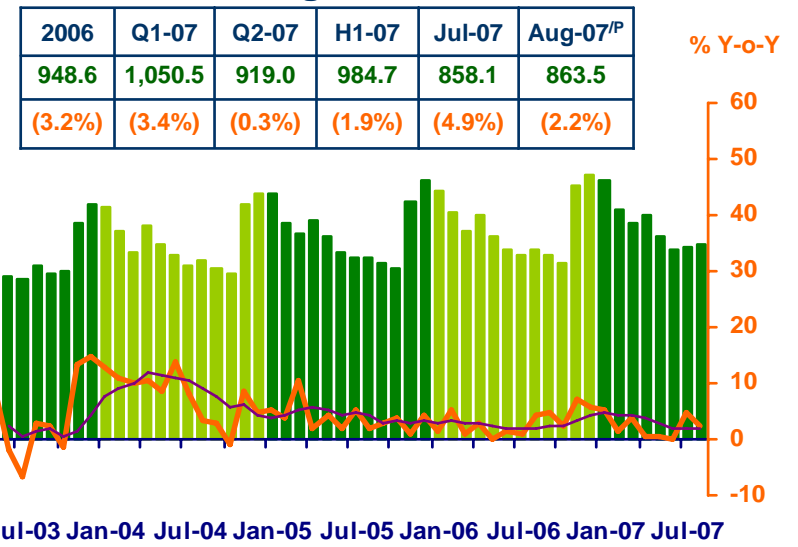
### Air passengers



### Hotel occupancy rate



### Hotel average room rate



Sources: Ministry of Finance; Airports of Thailand Plc.; and Data Management Group, Bank of Thailand

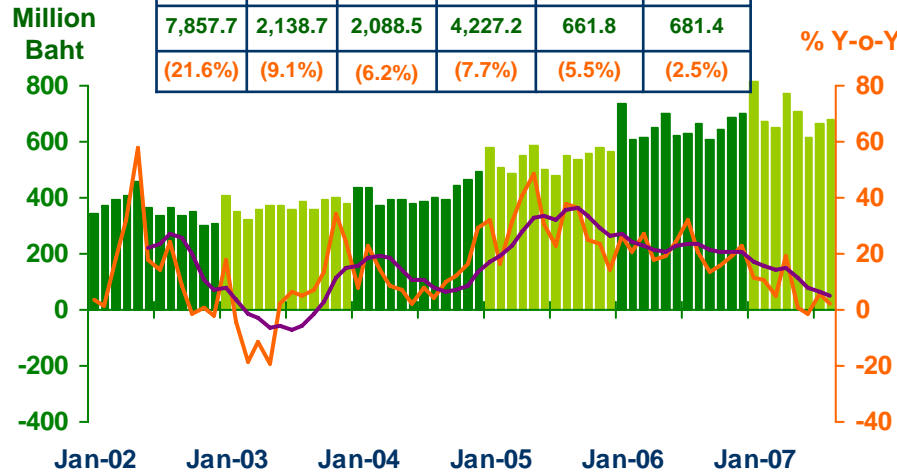


# PRIVATE CONSUMPTION

Economic Research Division, Northern Region Office

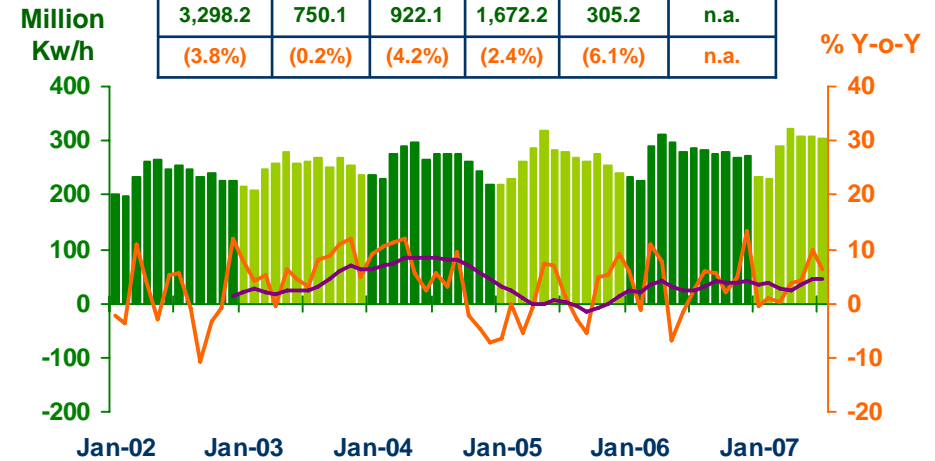
## VAT

2006	Q1-07	Q2-07	H1-07	Jul-07	Aug-07p
7,857.7	2,138.7	2,088.5	4,227.2	661.8	681.4
(21.6%)	(9.1%)	(6.2%)	(7.7%)	(5.5%)	(2.5%)



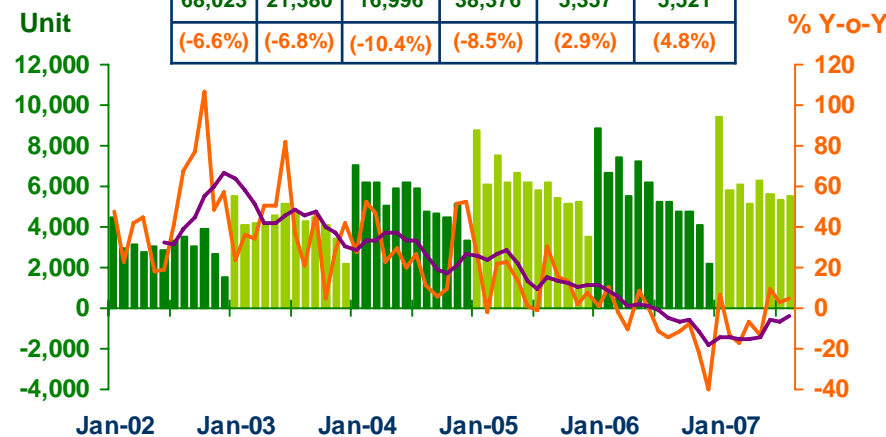
## Household electricity consumption

2006	Q1-07	Q2-07/P	H1-07/P	Jul-07	Aug-07p
3,298.2	750.1	922.1	1,672.2	305.2	n.a.
(3.8%)	(0.2%)	(4.2%)	(2.4%)	(6.1%)	n.a.



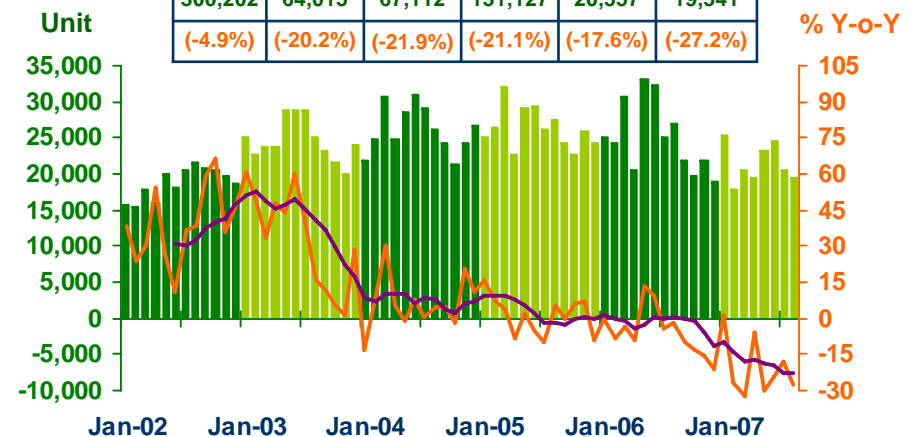
## Registered passenger car and registered commercial car

2006	Q1-07	Q2-07	H1-07	Jul-07	Aug-07p
68,023	21,380	16,996	38,376	5,357	5,521
(-6.6%)	(-6.8%)	(-10.4%)	(-8.5%)	(2.9%)	(4.8%)



## Registered motorcycle

2006	Q1-07	Q2-07	H1-07	Jul-07	Aug-07p
300,202	64,015	67,112	131,127	20,557	19,541
(-4.9%)	(-20.2%)	(-21.9%)	(-21.1%)	(-17.6%)	(-27.2%)



Sources: Ministry of Finance, Provincial Electricity Authority, and Provincial Land Transportation Offices

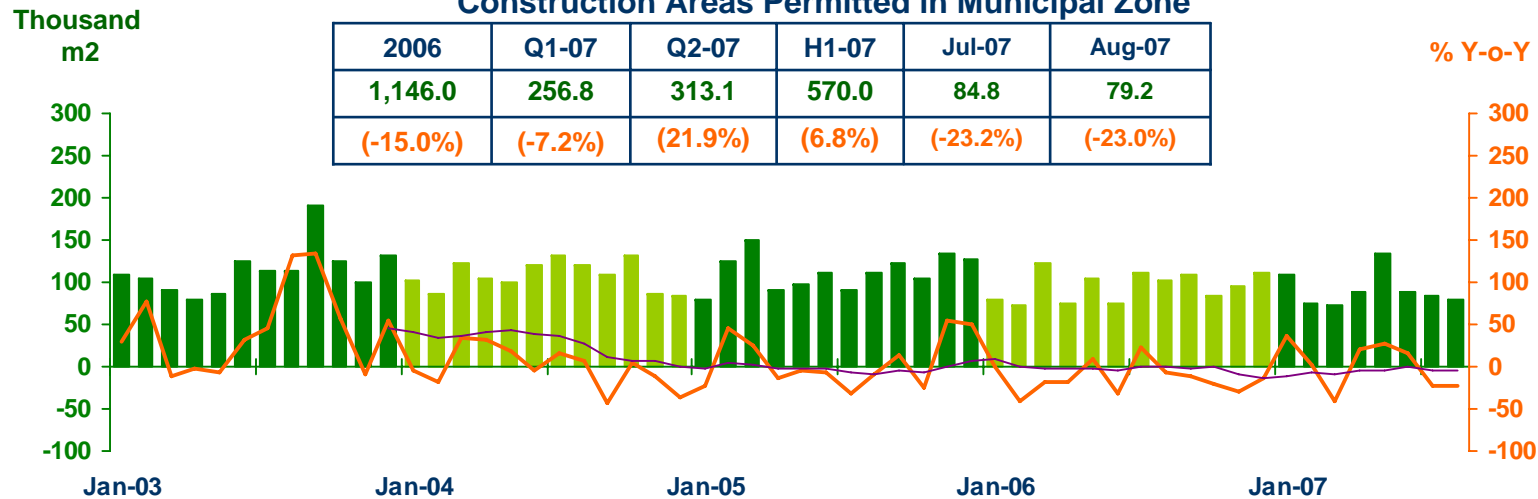


# PRIVATE INVESTMENT

Economic Research Division, Northern Region Office

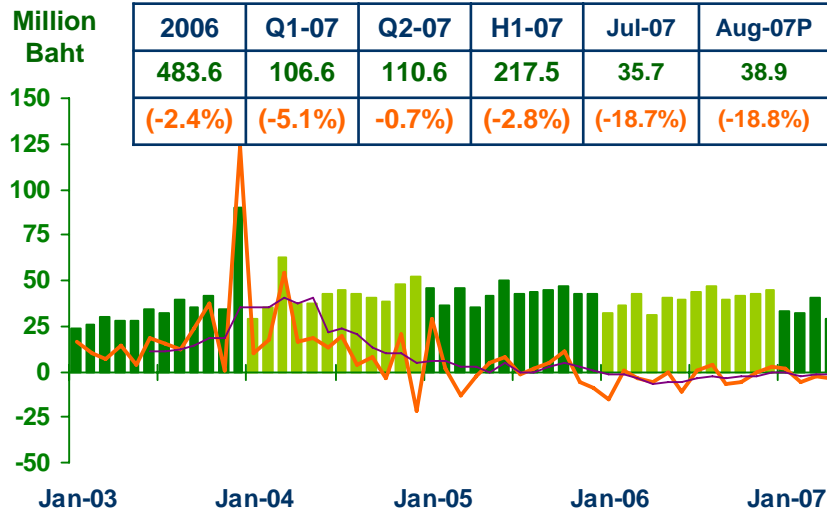
### Construction Areas Permitted in Municipal Zone

2006	Q1-07	Q2-07	H1-07	Jul-07	Aug-07
1,146.0	256.8	313.1	570.0	84.8	79.2
(-15.0%)	(-7.2%)	(21.9%)	(6.8%)	(-23.2%)	(-23.0%)



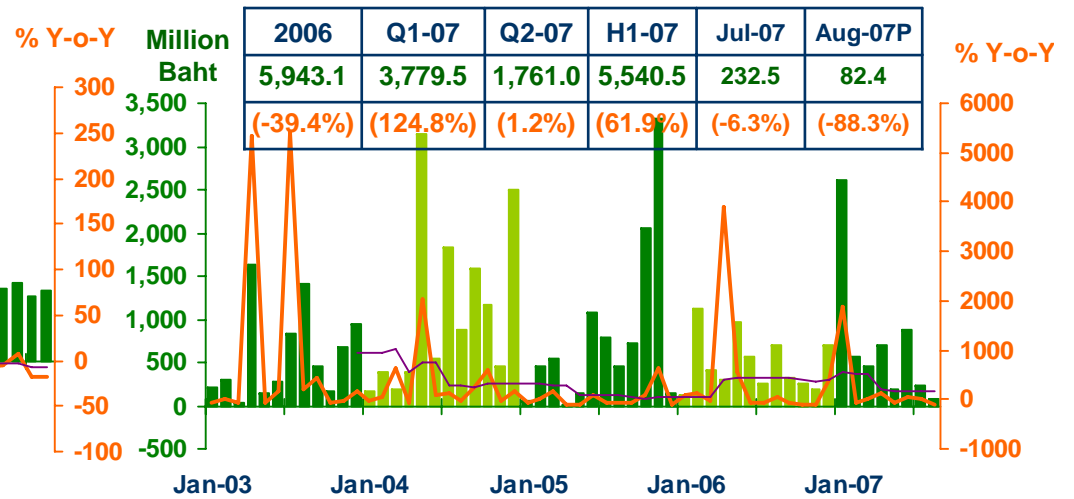
### Land Transaction Fee

2006	Q1-07	Q2-07	H1-07	Jul-07	Aug-07P
483.6	106.6	110.6	217.5	35.7	38.9
(-2.4%)	(-5.1%)	(-0.7%)	(-2.8%)	(-18.7%)	(-18.8%)



### Investment Value of Projects Approved by BOI

2006	Q1-07	Q2-07	H1-07	Jul-07	Aug-07P
5,943.1	3,779.5	1,761.0	5,540.5	232.5	82.4
(-39.4%)	(124.8%)	(1.2%)	(61.9%)	(-6.3%)	(-88.3%)



Sources: Municipality Offices, Provincial Land Offices, and Northern Region Investment and Economic Center (BOI)

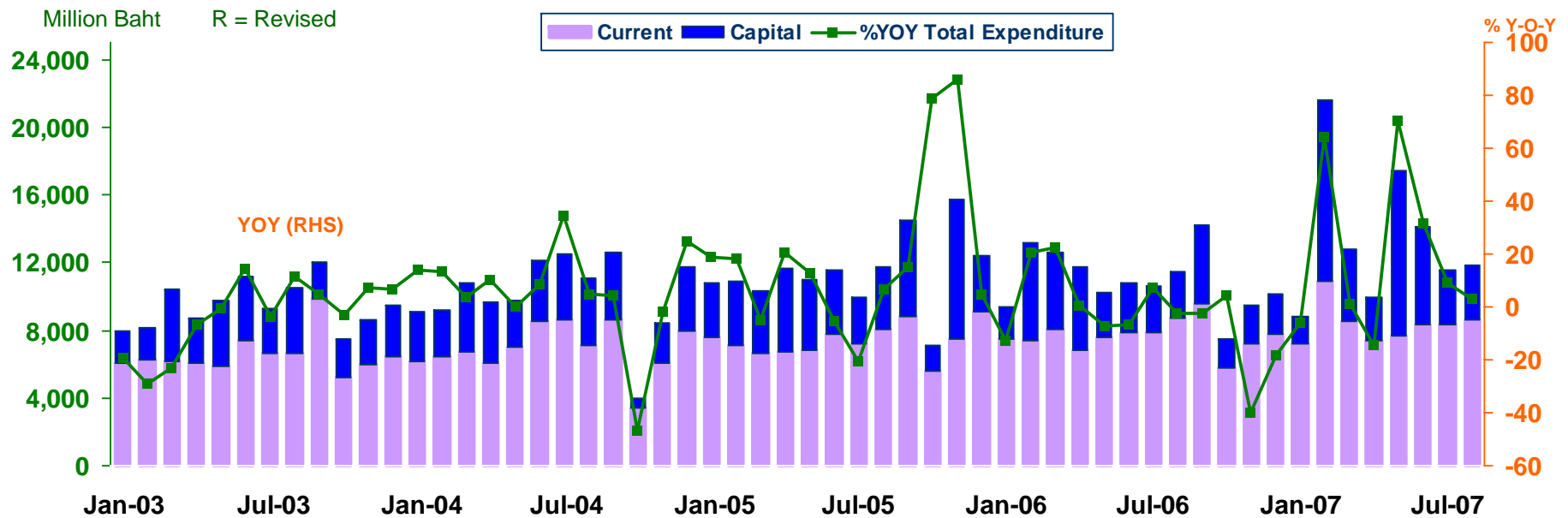


# GOVERNMENT SPENDING

Economic Research Division, Northern Region Office

## Expenditures

Expenditures	2549 <sup>R</sup>	2550				
		Q1-07 <sup>R</sup>	Q2-07 <sup>R</sup>	H1-07 <sup>R</sup>	July-07 <sup>R</sup>	Aug-07p
<b>Current</b>	91,977.0	26,677.2	23,289.8	49,967.0	8,343.7	8,572.0
	(3.8)	(16.8)	(4.7)	(10.9)	(5.5)	(-1.2)
<b>Capital</b>	39,231.8	16,549.3	18,199.6	34,748.9	3,221.9	3,249.4
	(-19.8)	(16.8)	(74.4)	(52.6)	(18.7)	(15.3)
<b>Total</b>	131,208.8	43,226.5	41,489.4	84,715.9	11,565.6	11,821.4
	(-4.6)	(22.9)	(27.0)	(24.9)	(8.9)	(2.8)



Source: Ministry of Finance



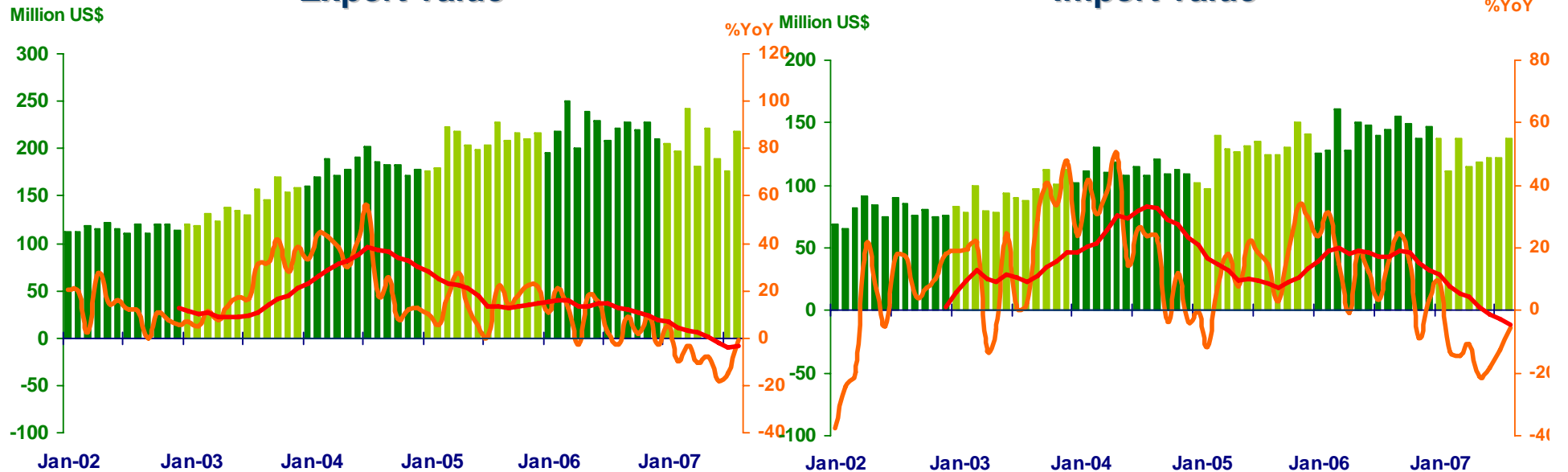
# FOREIGN TRADE

Economic Research Division, Northern Region Office

	2006	2007				
		H1	Q1	Q2	Jul	Aug
Export value (million US\$)	2,645.6	1,235.3	645.3	590.0	177.0	218.4
% YoY	(7.2%)	(-7.4%)	(-2.8%)	(-11.9%)	(-15.0%)	(-1.1%)
Import value (million US\$)	1,715.9	740.9	386.3	354.6	122.5	137.1
% YoY	(11.8%)	(-12.1%)	(-7.0%)	(-17.0%)	(-12.6%)	(-5.4%)
Trade balance (million US\$)	932.7	494.4	259.0	235.4	54.5	81.3

### Export value

### Import value



Source: Customs Department

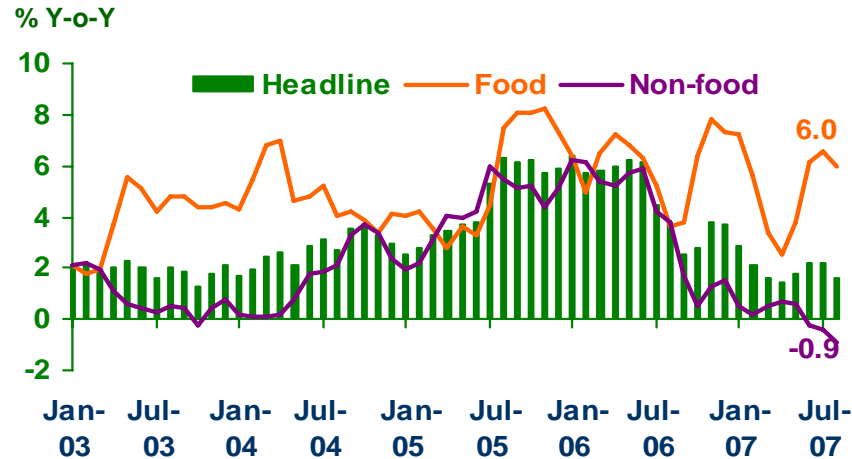




# PRICE LEVEL

Economic Research Division, Northern Region Office

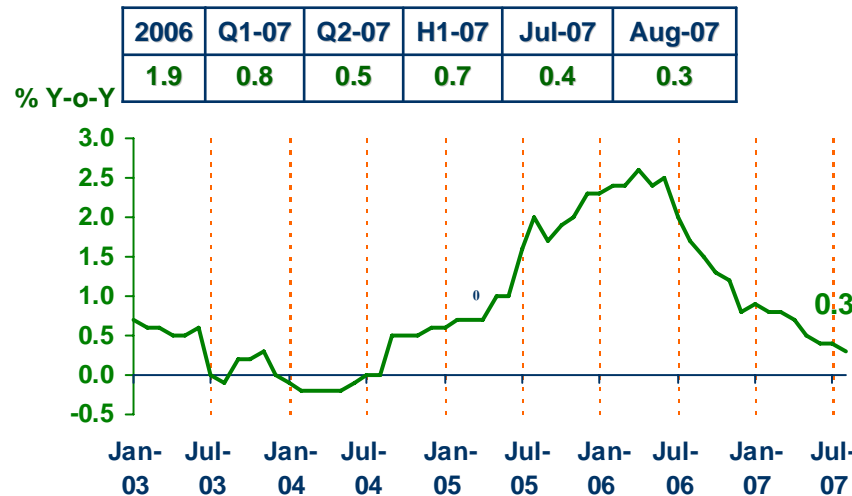
## Headline Inflation



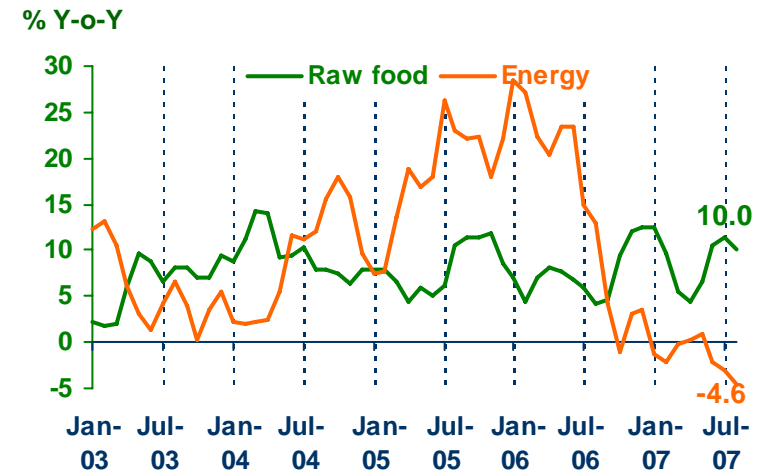
## Headline inflation (2002 = 100)

%Y-o-Y	2006	Q1-07	Q2-07	H1-07	Jul-07	Aug-07
Headline	4.7	2.2	1.8	2.0	2.2	1.6
Food	6.0	5.4	4.1	4.7	6.6	6.0
Non-food	3.9	0.4	0.4	0.4	-0.4	-0.9

## Core Inflation



## Raw food and Energy



Source: Bureau of Trade and Economic Indices, Ministry of Commerce

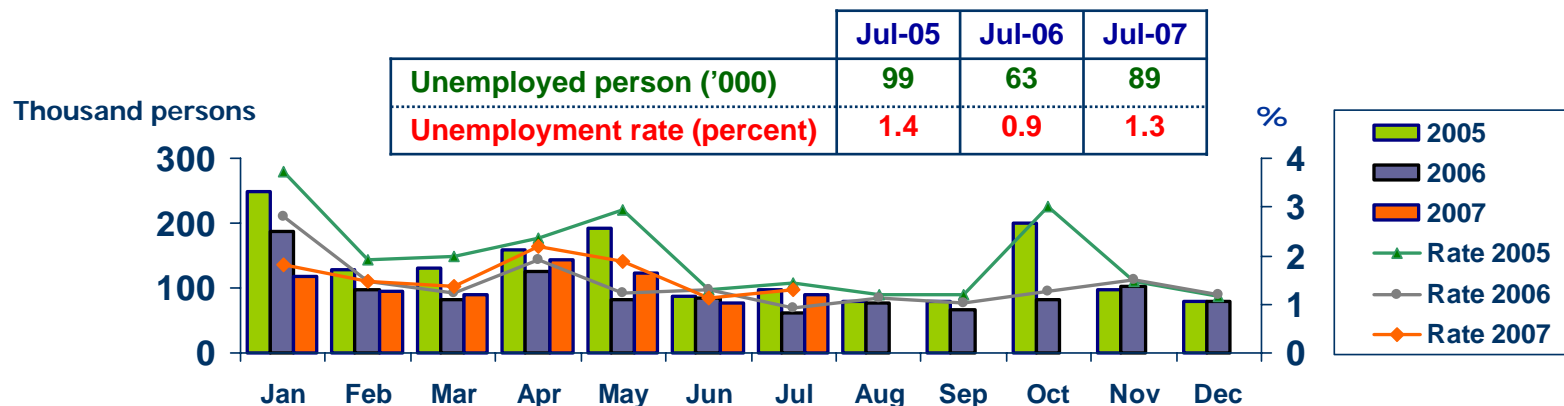


# LABOR FORCE SURVEY

Economic Research Division, Northern Region Office

	% of Total Labor Force (as of Jul 2007)	2006 ( $\Delta\%$ )	Q1-07 ( $\Delta\%$ )	May-07 ( $\Delta\%$ )	Jun-07 ( $\Delta\%$ )	Jul-07 ( $\Delta\%$ )
<b>Labor Force (1,000 Persons)</b>	<b>100.0</b>	<b>6,741</b>	<b>6,534</b>	<b>6,549</b>	<b>6,756</b>	<b>6,810</b>
<b>Employed persons</b>	<b>98.7</b>	<b>0.3</b>	<b>0.6</b>	<b>-2.4</b>	<b>3.5</b>	<b>0.3</b>
• <b>Agriculture</b>	<b>51.0</b>	<b>4.5</b>	<b>-0.8</b>	<b>1.0</b>	<b>0.2</b>	<b>-4.9</b>
• <b>Non-agriculture</b>	<b>47.7</b>	<b>-4.4</b>	<b>1.9</b>	<b>-5.2</b>	<b>7.1</b>	<b>6.6</b>
- <b>Wholesale &amp; retail trade</b>	<b>13.6</b>	<b>1.7</b>	<b>8.7</b>	<b>-5.6</b>	<b>3.5</b>	<b>10.9</b>
- <b>Manufacturing</b>	<b>10.5</b>	<b>-3.5</b>	<b>-6.0</b>	<b>-4.1</b>	<b>14.2</b>	<b>-3.0</b>
- <b>Construction</b>	<b>6.1</b>	<b>-18.7</b>	<b>-16.4</b>	<b>-21.4</b>	<b>13.5</b>	<b>7.9</b>
- <b>Hotel &amp; restaurants Services</b>	<b>4.9</b>	<b>-15.1</b>	<b>20.4</b>	<b>-1.2</b>	<b>-3.7</b>	<b>8.9</b>
- <b>Others</b>	<b>12.6</b>	<b>-0.6</b>	<b>8.3</b>	<b>1.2</b>	<b>6.7</b>	<b>9.4</b>
<b>Unemployed persons</b>	<b>1.3</b>	<b>1.2</b>	<b>10.0</b>	<b>52.1</b>	<b>-10.2</b>	<b>42.0</b>
<b>Seasonally inactive persons</b>	<b>0.0</b>	<b>236.1</b>	<b>-49.5</b>	<b>64.3</b>	<b>93.9</b>	<b>-88.6</b>

## Unemployment



Source: National Statistical Office



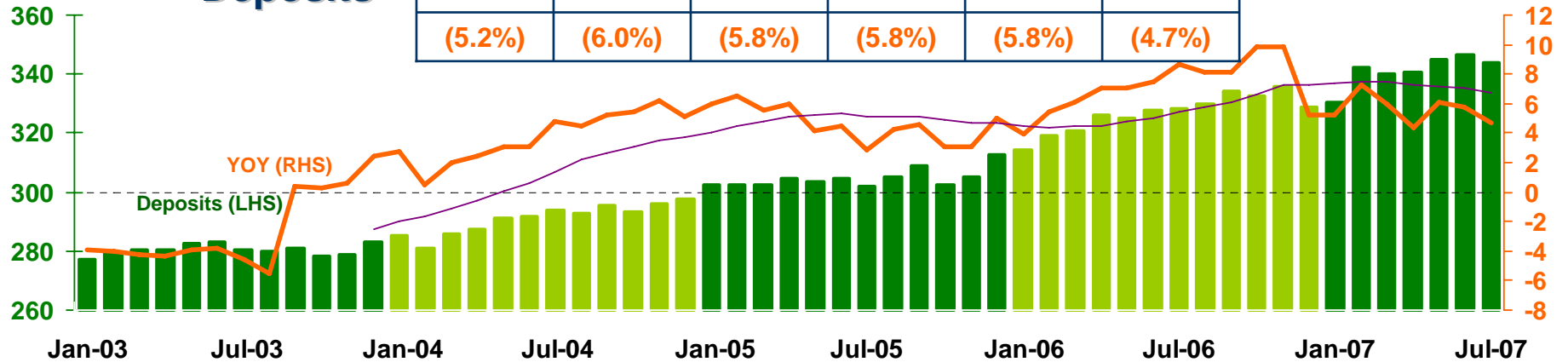
# DEPOSITS AND CREDITS OF COMMERCIAL BANKS

Economic Research Division, Northern Region Office

Billion Baht

## Deposits

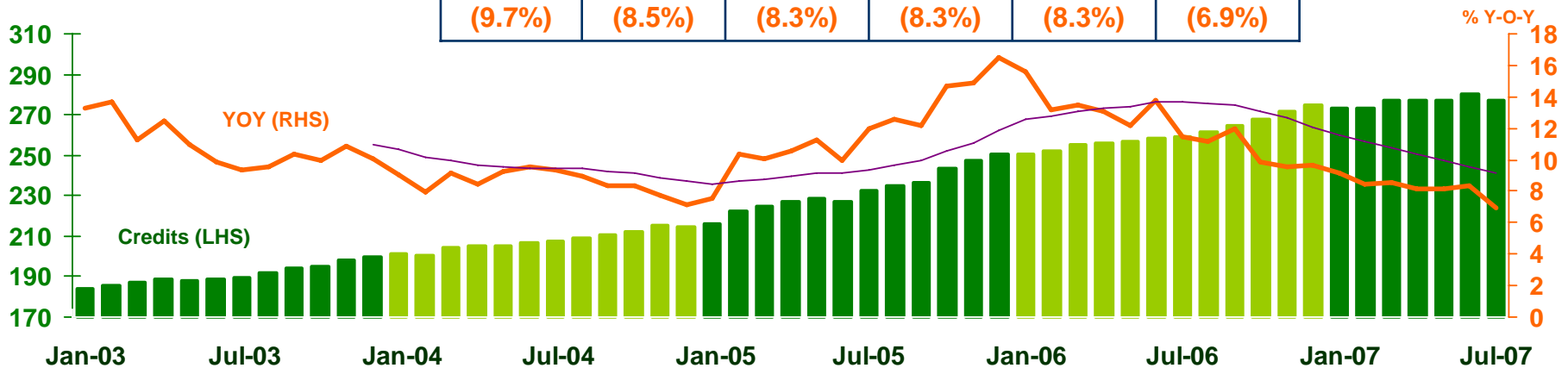
2006	Q1-07	Q2-07	H1-07	Jun-07	Jul-07
328.7	339.9	346.4	346.4	346.4	343.6
(5.2%)	(6.0%)	(5.8%)	(5.8%)	(5.8%)	(4.7%)



Billion Baht

## Credits

2006	Q1-07	Q2-07	H1-07	Jun-07	Jul-07
274.5	277.2	280.1	280.1	280.1	277.2
(9.7%)	(8.5%)	(8.3%)	(8.3%)	(8.3%)	(6.9%)



Source: Bank of Thailand