



ธนาคารแห่งประเทศไทย
BANK OF THAILAND

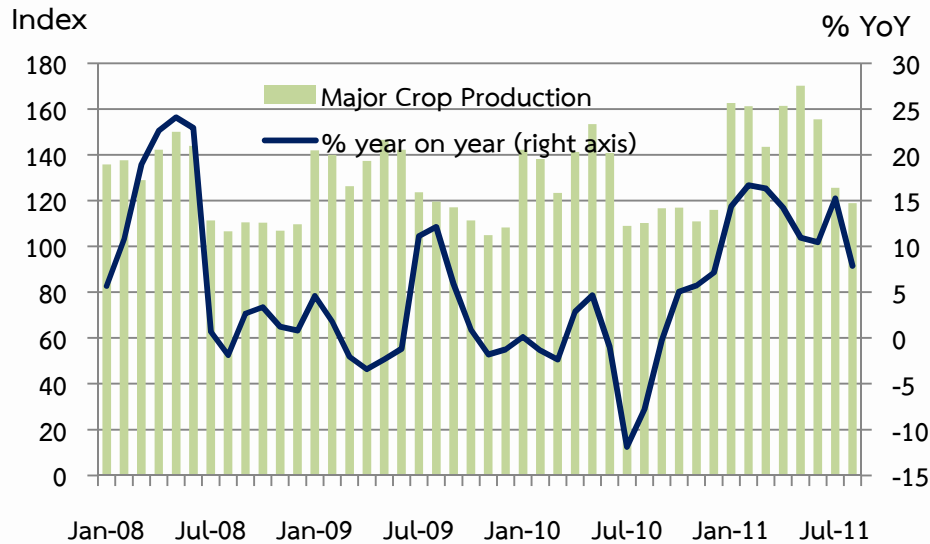
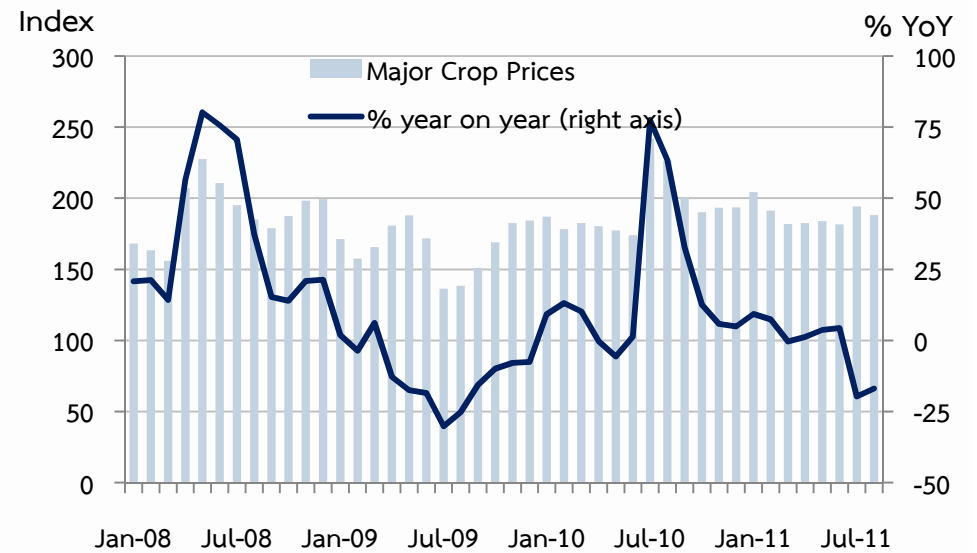
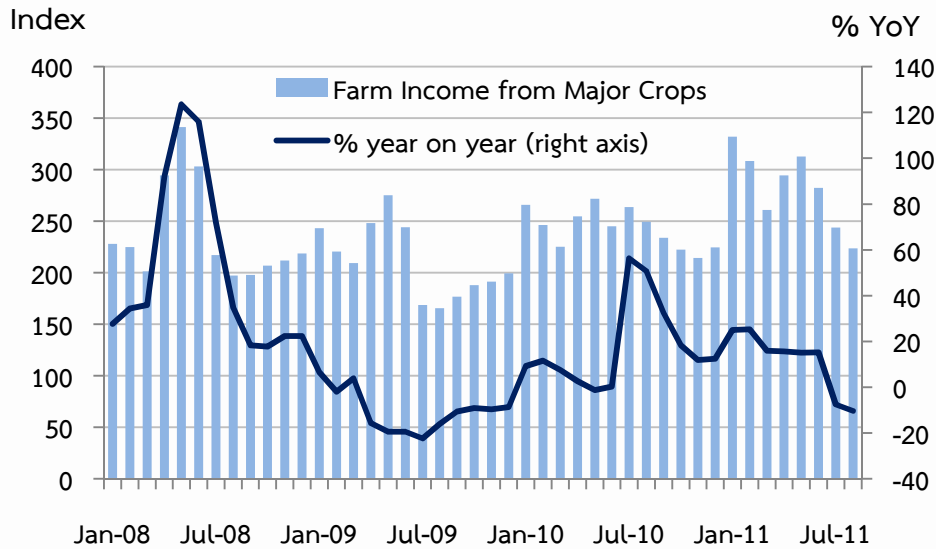


The Northern Region : Economic Conditions in Aug 2011



Farm Income from Major Crops

Economic Research Division, Northern Region Office

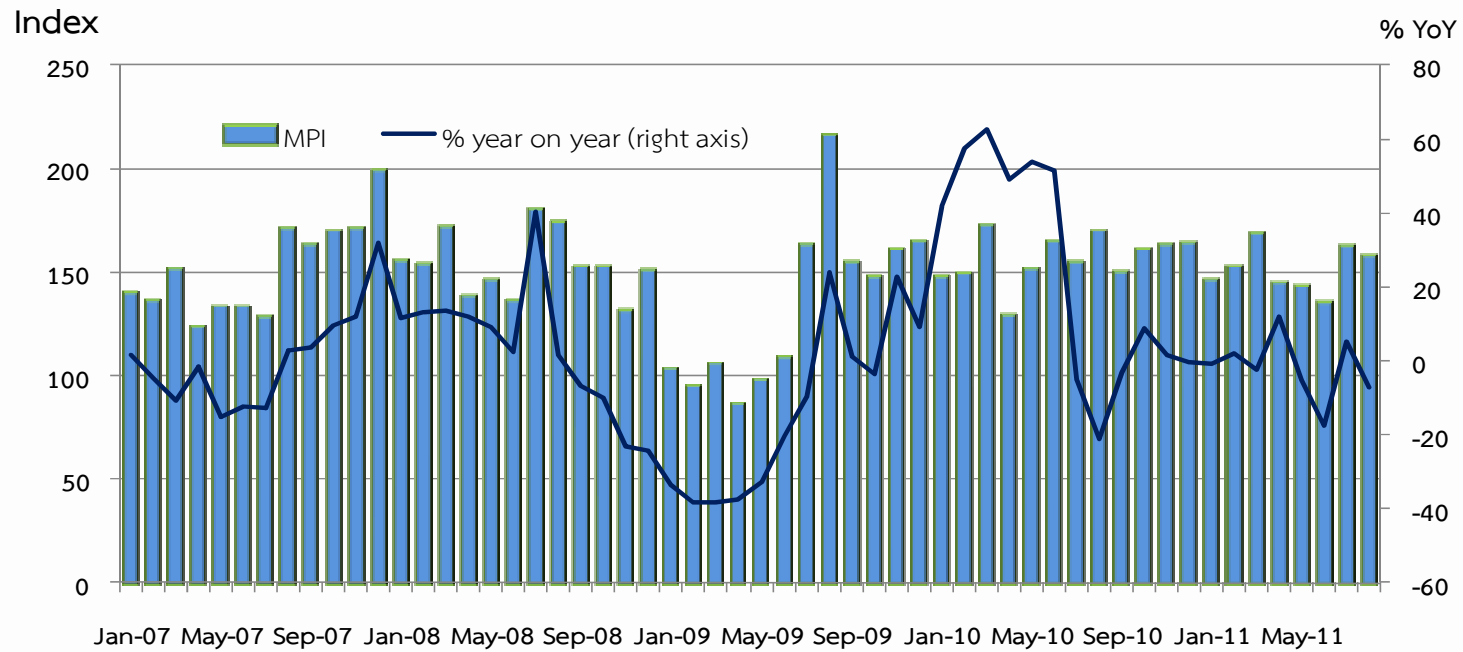


FARM INCOME FROM MAJOR CROPS,
MAJOR CROP PRODUCTION AND MAJOR CROP PRICES

% YoY	2010	2010		2011			
		H1	H1	Q1	Q2	Jul	Aug
Farm Income	14.3	6.3	19.0	21.0	15.4	-7.5	-10.3
Production	1.9	-0.1	15.0	16.1	13.1	15.2	7.9
Price	12.2	6.4	3.5	4.2	2.1	-19.8	-16.8



	2010	2010		2011				
		H1	H2	H1	Q1	Q2	Jul	Aug ^P
MPI level	156.6	152.5	160.6	148.7	155.8	141.6	163.1	157.6
% year on year	16.9%	52.7%	-4.4%	-2.5%	-0.4%	-4.7%	5.2%	-7.3%
MPI level, SA	-	-	-	-	170.3	160.4	166.5	134.9
% month on month, % quarter on quarter	-	-	-	-	18.2%	-5.8%	8.5%	-19.0%



Tourism

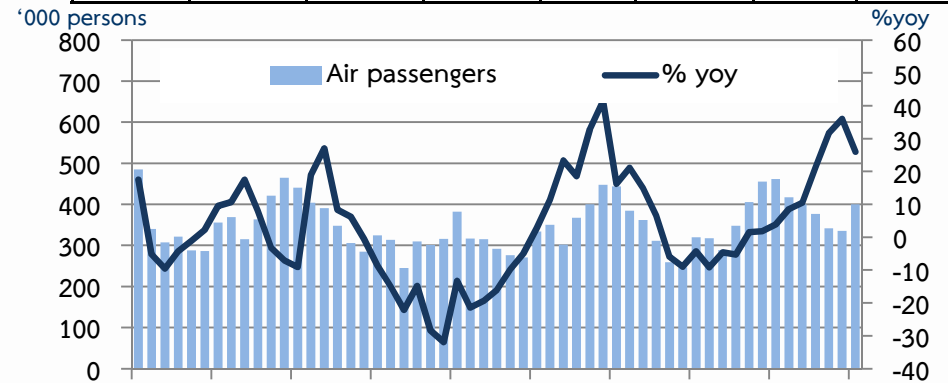
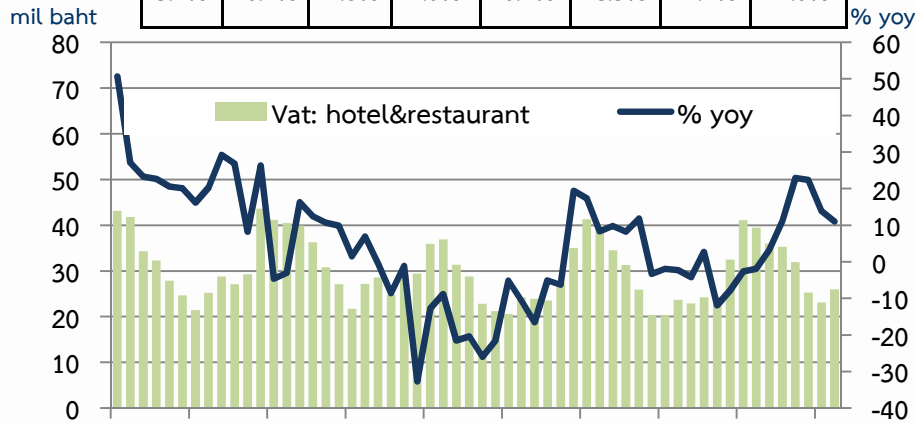


ธนาคารแห่งประเทศไทย
BANK OF THAILAND

Economic Research Division, Northern Region Office

2010	2010		2011				
	H1	H2	H1	Q1	Q2	Jul	Aug-p
344.2	196.1	148.1	209.8	116.9	92.9	23.3	26.6
3.4%	10.2%	-4.6%	7.0%	-0.7%	18.5%	14.2%	11.0%

2010	2010		2011				
	H1	H2	H1	Q1	Q2	Jul	Aug-p
4,141.9	2,006.9	2,134.9	2,331.8	1,278	1,053.6	410.3	400.2
2.2%	8.3%	-3.0%	16.2%	7.4%	29.0%	28.3%	26.0%

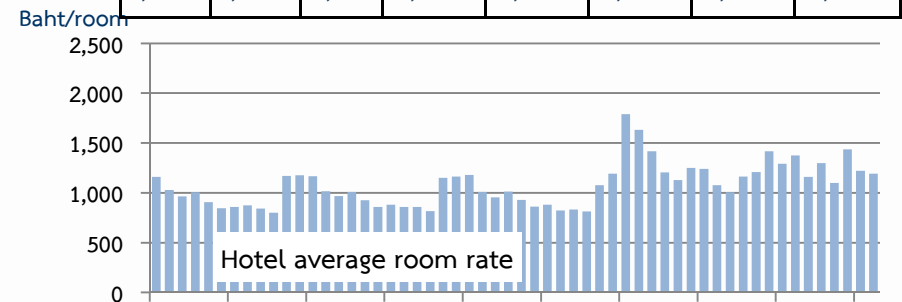
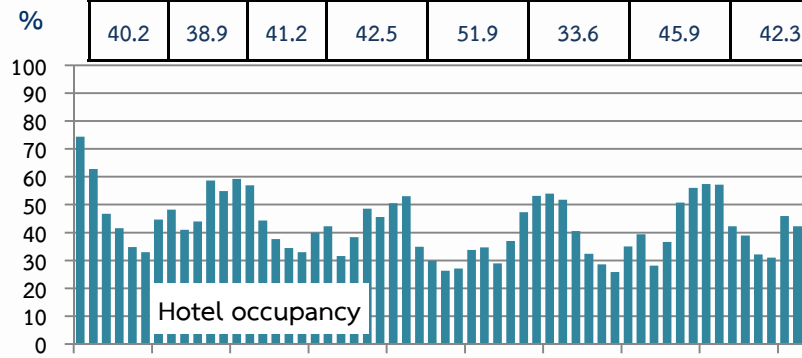


Jan-07 Jul-07 Jan-08 Jul-08 Jan-09 Jul-09 Jan-10 Jul-10 Jan-11 Jul-11

Jan-07 Jul-07 Jan-08 Jul-08 Jan-09 JUL-09 Jan-10 Jul-10 Jan-11 Jul-11

2010	2010		2011				
	H1	H2	H1	Q1	Q2	Jul	Aug-p
40.2	38.9	41.2	42.5	51.9	33.6	45.9	42.3

2010	2010		2011				
	H1	H2	H1	Q1	Q2	Jul	Aug-p
1,290.7	1,415.2	1,094	1,230.4	1,252.6	1,190.9	1,221.2	1,193.2

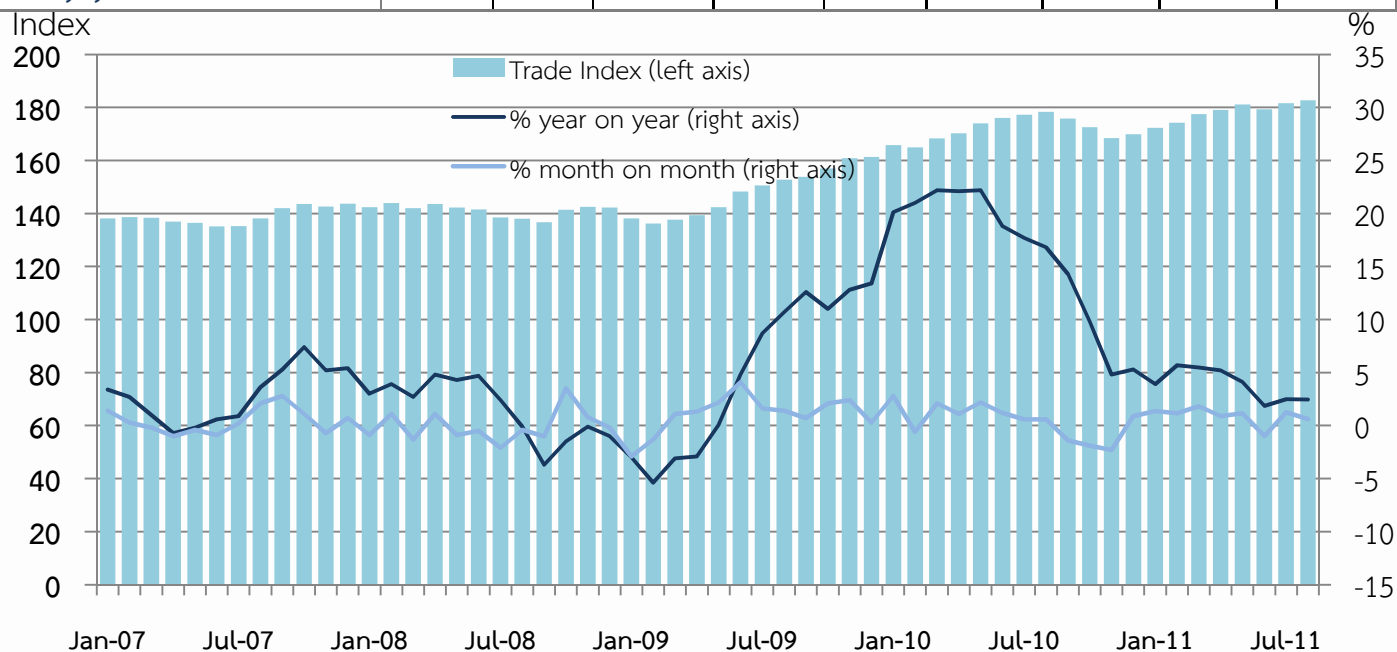


Jan-07 Jul-07 Jan-08 Jul-08 Jan-09 Jul-09 Jan-10 Jul-10 Jan-11 Jul-11

Jan-07 Jul-07 Jan-08 Jul-08 Jan-09 Jul-09 Jan-10 Jul-10 Jan-11 Jul-11



	Weight	2010	2010		2011				
			H1	H2	H1	Q1	Q2	Jul	Aug ^P
Trade Index	100%	171.8	169.9	173.7	177.3	174.7	179.8	181.6	182.7
% year on year (% yoy)		15.9	21.0	11.3	4.4	5.0	3.7	2.5	2.4
Motor Vehicles/Cycles Trade	46.0%	167.7	164.2	171.3	177.3	173.9	180.7	172.4	169.6
% yoy		16.9	21.1	13.1	8.0	7.6	8.4	1.5	-3.0
Wholesale Trade	21.0%	197.7	195.6	199.8	201.0	197.8	204.2	226.4	237.3
% yoy		17.9	23.0	13.3	2.8	6.5	-0.6	8.1	16.4
Retail Trade	33.0%	163.5	163.9	163.1	164.5	163.3	165.7	170.2	171.5
% yoy		13.4	19.8	7.6	0.4	0.6	0.1	0.1	1.2

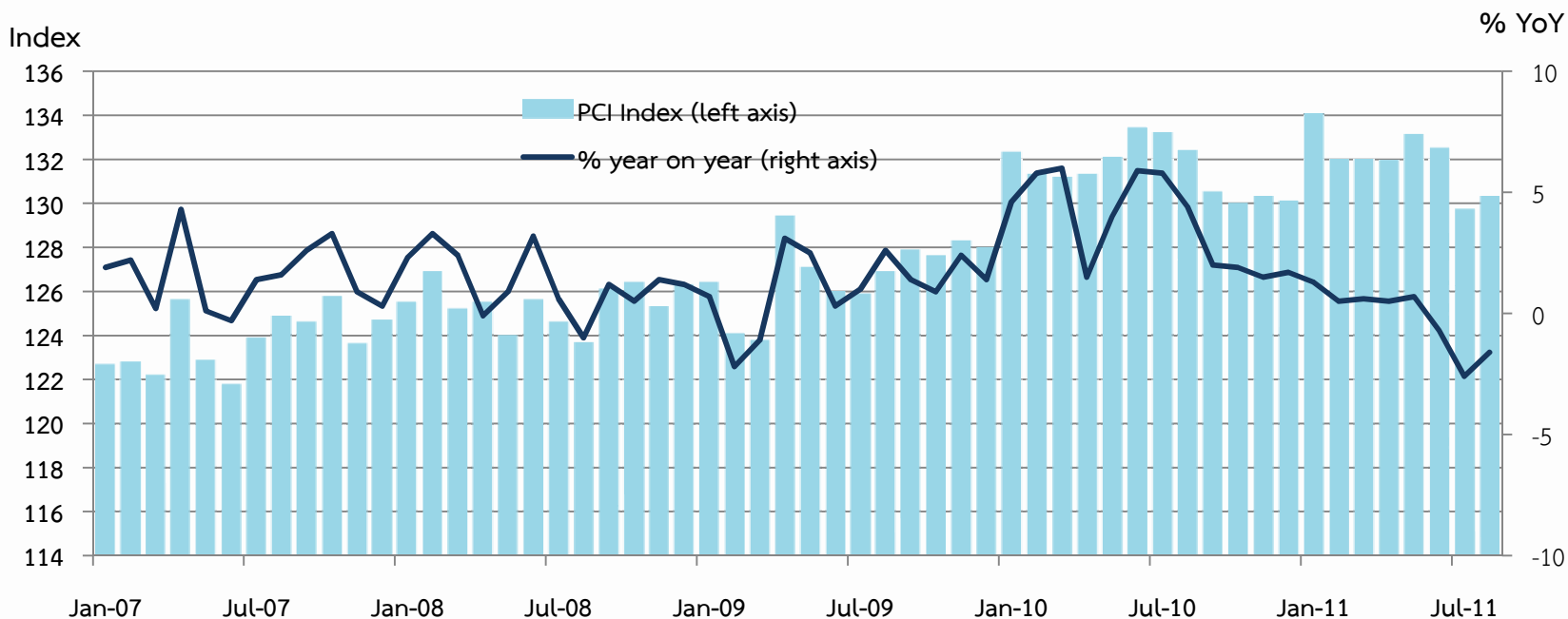




Private Consumption Index

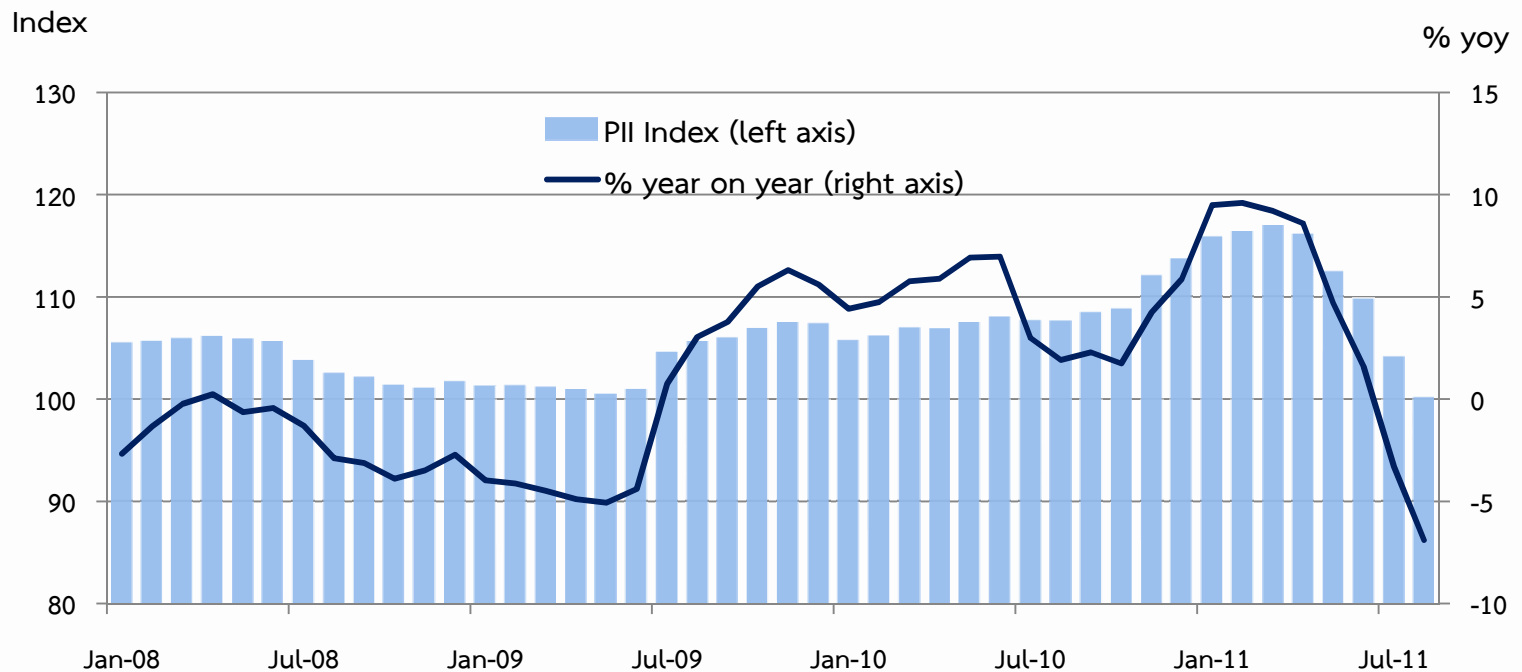
Economic Research Division, Northern Region Office

	2010	2010		2011				
		H1	H2	H1	Q1	Q2	Jul	Aug ^P
PCI	131.5	131.9	131.1	132.6	132.7	132.5	129.7	130.3
% year on year	3.7	4.6	2.9	0.5	0.8	0.2	-2.6	-1.6
% month on month, % quarter on quarter		3.5	-0.7	1.1	2.0	-0.1	-2.1	0.4



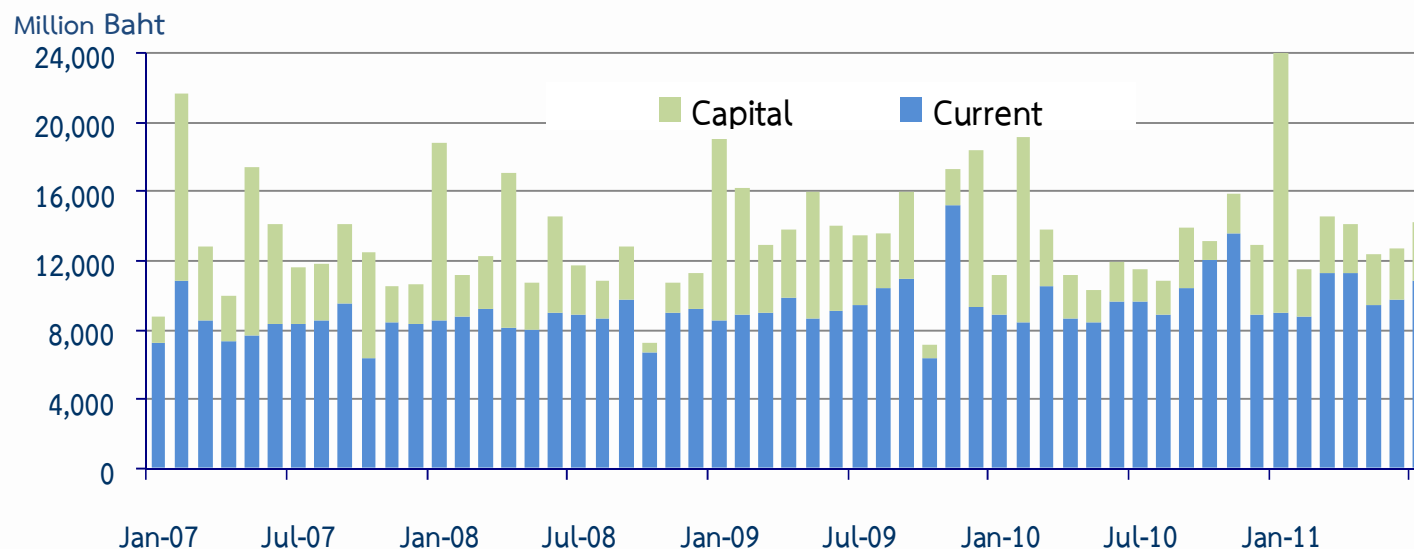


	2010	2010		2011				
		H1	H2	H1	Q1	Q2	Jul	Aug
PII	108.3	106.9	109.7	114.5	116.3	112.8	104.1	100.2
% year on year	4.4	5.8	3.2	7.2	9.4	5.0	-3.3	-6.9
% month on month, % quarter on quarter	4.4	0.5	2.7	4.4	4.3	-3.0	-5.1	-3.8



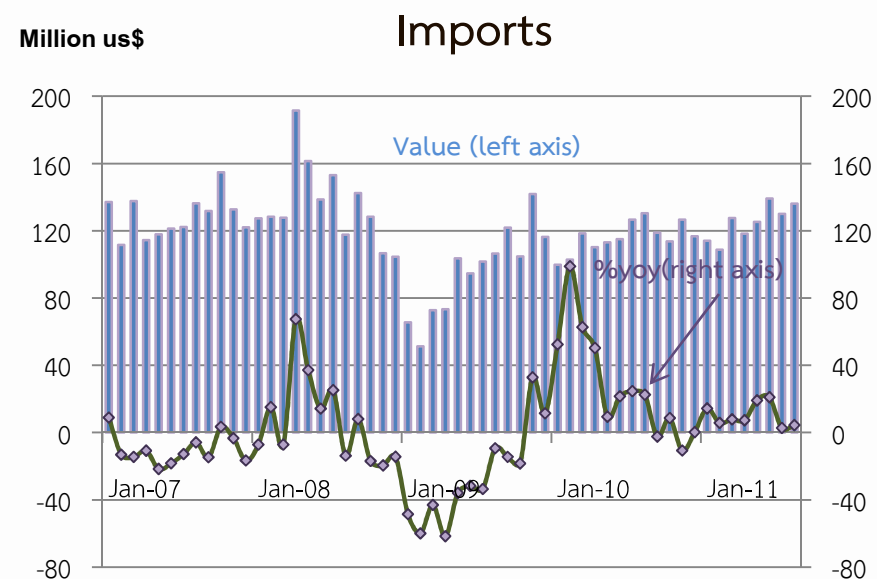
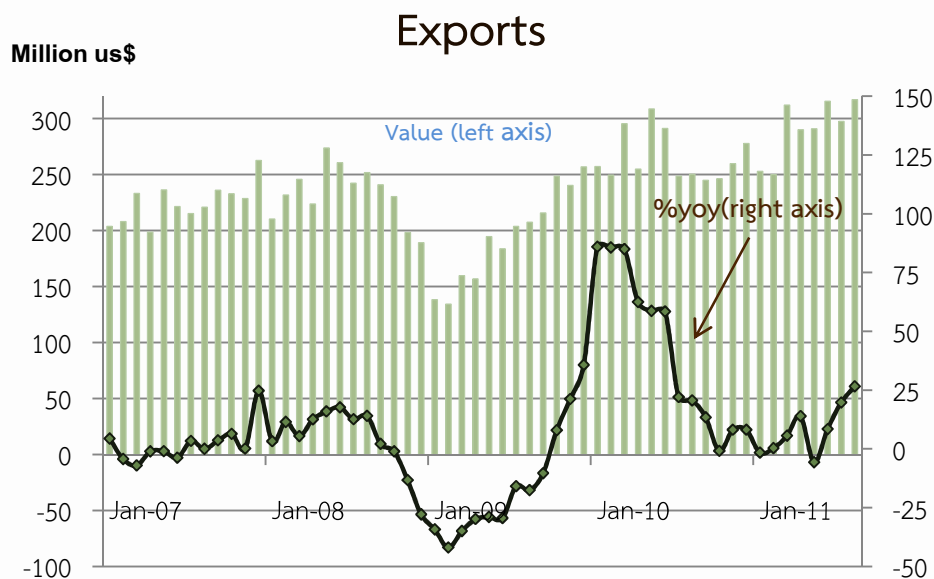


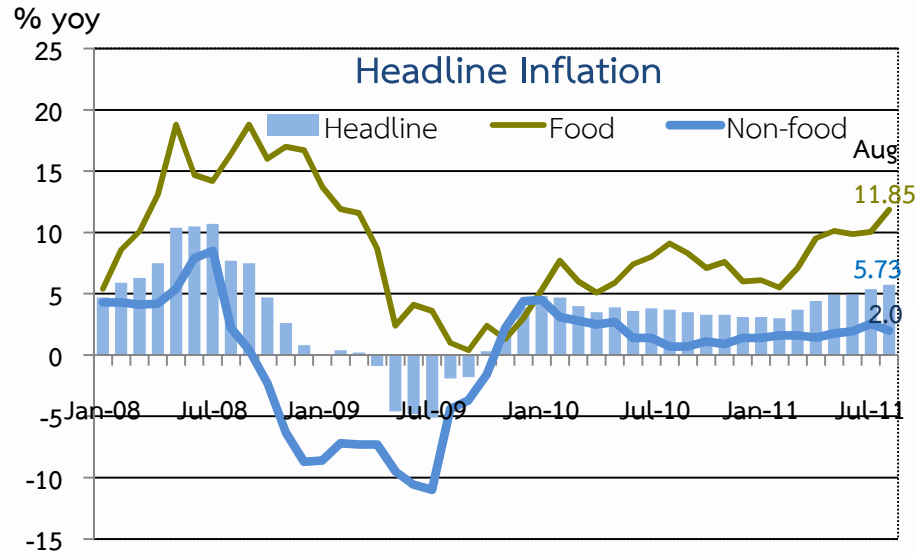
Expenditure	2010	2010		2011				
		H1	H2	H1	Q1	Q2	Jul	Aug
Current	118,153.8	54,705.8	63,447.9	59,518.6	29,028.8	30,489.8	10,904.0	10,801.9
% year on year	(2.1)	(1.3)	(2.8)	(8.8)	(4.0)	(13.8)	(13.2)	(22.2)
Capital	37,599.8	22,838.0	14,761.9	29,881.4	21,169.3	8,712.0	3,321.9	3,650.9
% year on year	(-39.4)	(-39.8)	(-38.6)	(30.8)	(31.1)	(30.1)	(77.3)	(83.1)
Total	155,753.6	77,543.8	78,209.8	89,400.0	50,198.2	39,201.8	14,225.9	14,452.8
% year on year	(-12.4)	(-15.7)	(-8.8)	(15.3)	(13.9)	(17.1)	(23.7)	(33.4)



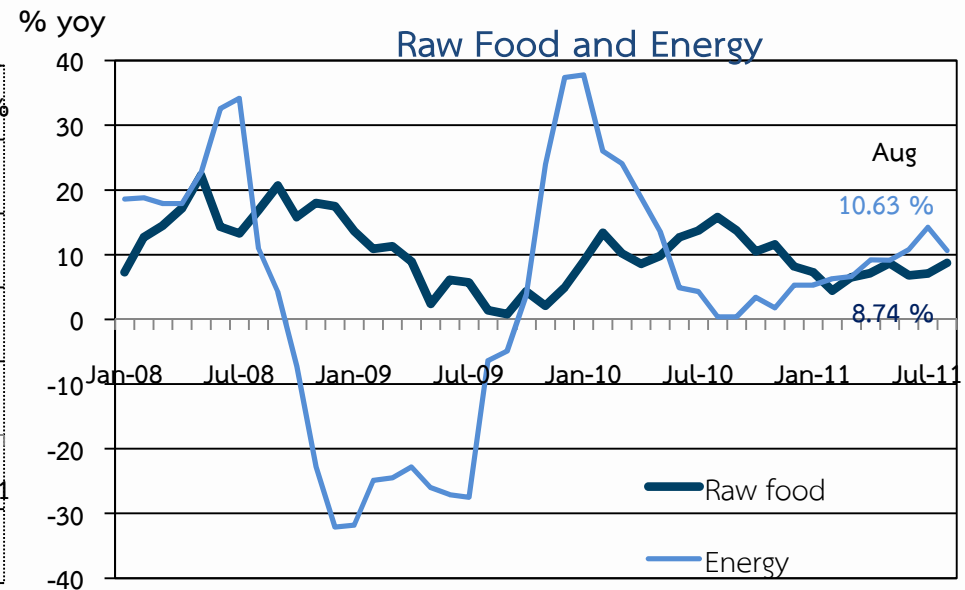
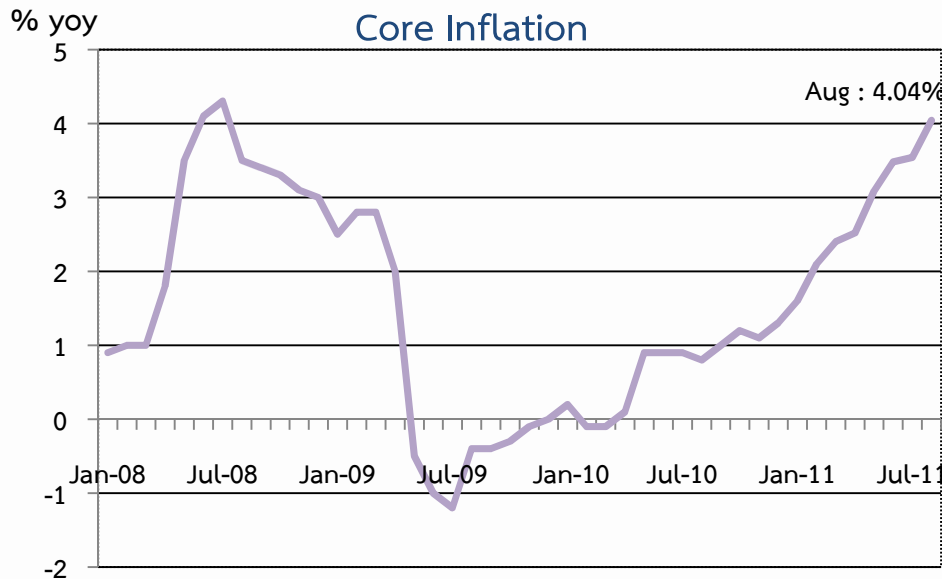


	2010	2010		2011				
		H1	H2	H1	Q1	Q2	July	Aug
EXPORTS	3,184.5	1,656.7	1,527.9	1,711.9	815.0	896.8	297.6	317.1
	36.1%	71.2%	11.3%	3.3%	1.6%	4.9%	19.7%	26.6%
IMPORTS	1,384.5	651.6	733.0	733.1	350.5	382.6	130.0	136.2
	19.9%	41.2%	5.8%	12.5%	9.1%	15.8%	2.7%	4.4%





	2010	2010		2011				
		H1	H2	H1	Q1	Q2	Jul	Aug
Headline	3.7	4.1	3.4	4.0	3.28	4.74	5.37	5.73
Food	7.0	6.2	7.7	8.1	6.25	9.85	10.05	11.85
Non-food	1.9	2.9	1.0	1.6	1.54	1.71	2.54	2.00
Core	0.7	0.3	1.1	2.5	2.02	3.03	3.54	4.04





%	% of Total Labor Force (as of July 2011)	2010	2010		2011				
			H1	H2	H1	Q1	Q2	Jun	July
Labor Force (1,000 Persons)	100.0	7,232	7,176	7,287	7,218	7,249	7,187	7,256	7,353
Employed persons	99.5	0.6	1.3	0.7	7,143	1.1	1.6	3.7	2.5
• Agriculture	52.0	-0.7	0.4	-1.8	3.8	1.7	5.9	2.5	13.7
• Non-agriculture	47.5	2.5	2.0	3.0	-0.6	0.6	-1.7	4.7	-7.6
- Wholesale & retail trade	13.3	2.5	4.7	0.3	-2.1	0.8	-5.0	6.2	-1.4
- Manufacturing	8.3	0.8	0.8	0.8	-8.2	-11.7	-4.5	-1.8	-20.7
- Construction	5.0	1.7	2.6	0.6	-3.8	2.2	-8.9	-2.1	-18.6
- Hotel & restaurants Services	4.9	5.9	6.5	5.2	-16.7	-16.7	-16.8	-1.2	-10.0
- Others	16.0	-6.4	-1.8	-11.0	15.0	15.8	14.1	14.7	1.0
Unemployed persons	0.5	-27.2	-35.8	-13.4	-35.4	-18.1	-50.2	-51.9	-37.2
Seasonally inactive persons	0.0	73.7	88.5	30.7	-47.6	-30.6	-59.5	-86.1	-92.1

Unemployment

	July-10	July-11
In thousand persons	58	36
rate	0.8	0.5





Deposits and Credits of Commercial Banks

Economic Research Division, Northern Region Office

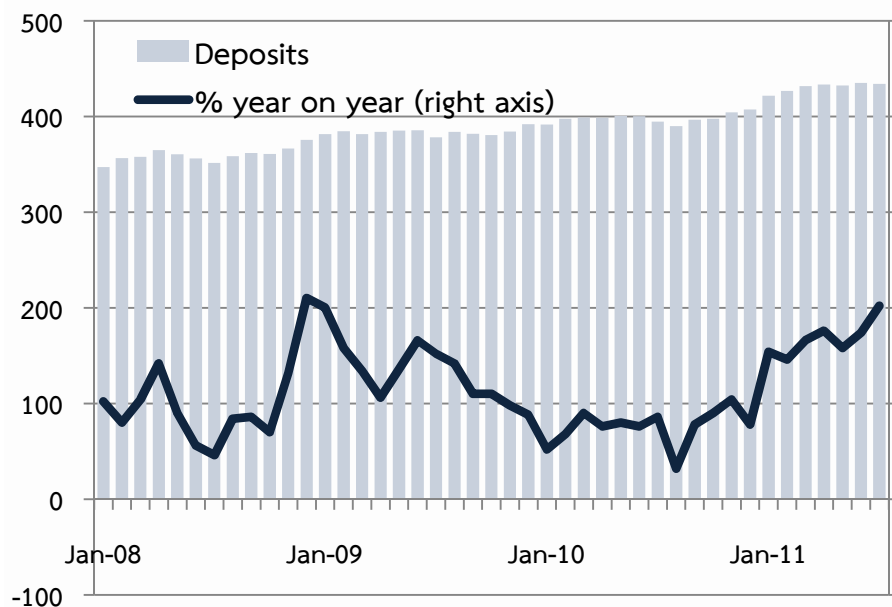
Commercial Bank's Deposits

	2010			2011		
	H1	Q3	Q4	Q1	Jun	Jul
Deposits	400.3	396.7	407.4	431.8	435.1	434.1
% YoY	3.8	3.9	3.9	8.3	8.7	10.1

Commercial Bank's Credits

	2010			2011		
	H1	Q3	Q4	Q1	Jun	Jul
Credits	325.0	335.4	349.4	354.5	370.9	369.4
% YoY	8.9	12.5	12.8	11.9	14.1	13.1

Billion Baht



% YoY Billion Baht

