

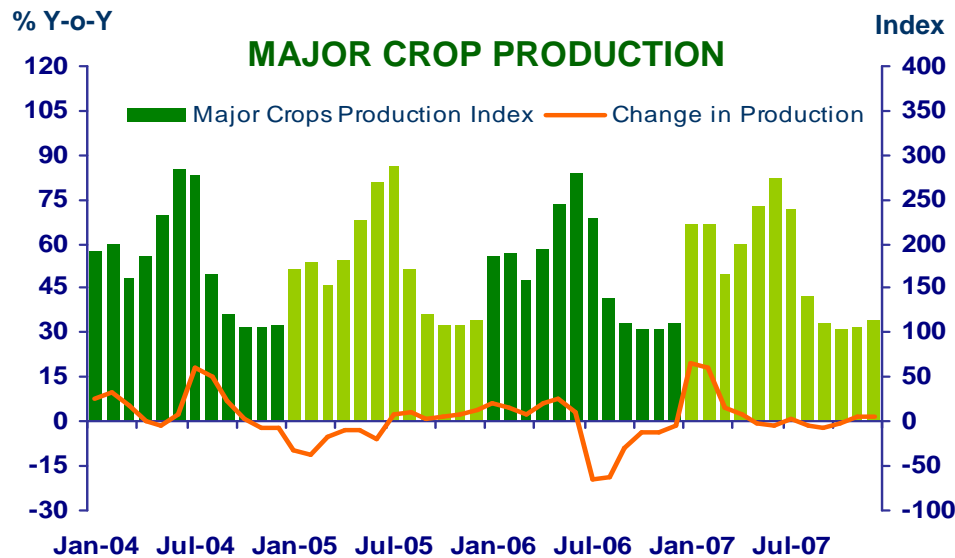
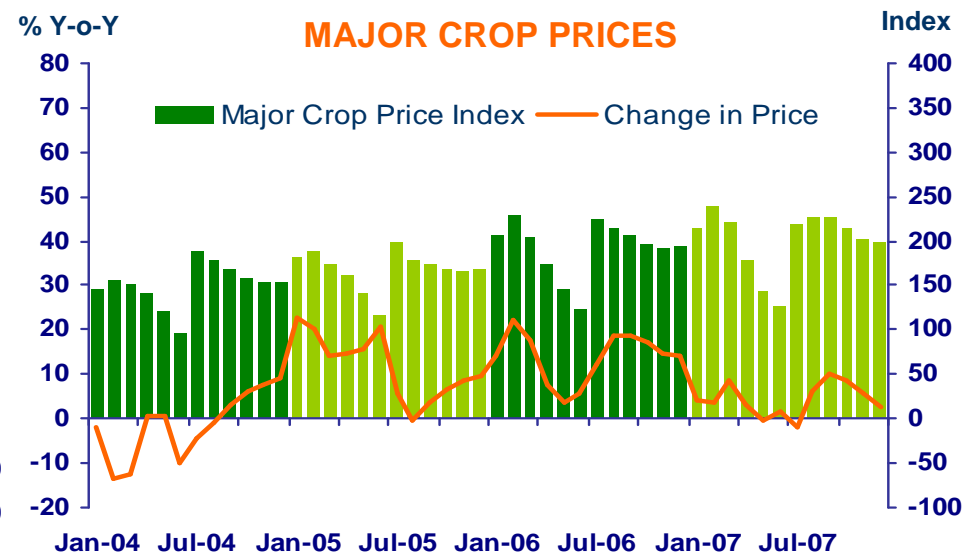
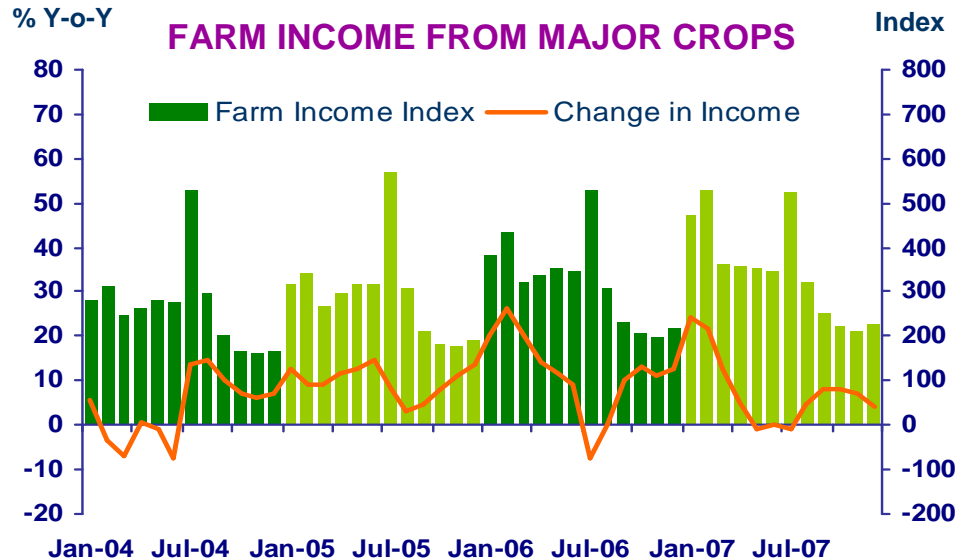


**แถลงข่าวเศรษฐกิจการเงินภาคเหนือ
เดือนธันวาคม 2550 และปี 2550**



FARM INCOME FROM MAJOR CROPS

Economic Research Division, Northern Region Office



CHANGE IN FARM INCOME FROM MAJOR CROPS, MAJOR CROP PRODUCTION AND MAJOR CROP PRICES

△ % (Y-O-Y)	2006	2007	2007				
			H1	Q3	Q4	Nov	Dec
Farm Income	13.1	8.4	13.0	5.7	5.9	7.0	4.0
Production	-1.9	3.1	7.6	-1.8	1.0	1.4	1.3
Price	15.0	5.3	5.4	7.5	4.9	5.6	2.7

Source : Index constructed using data from Ministry of Agriculture and Co-operatives. (1988 =100)

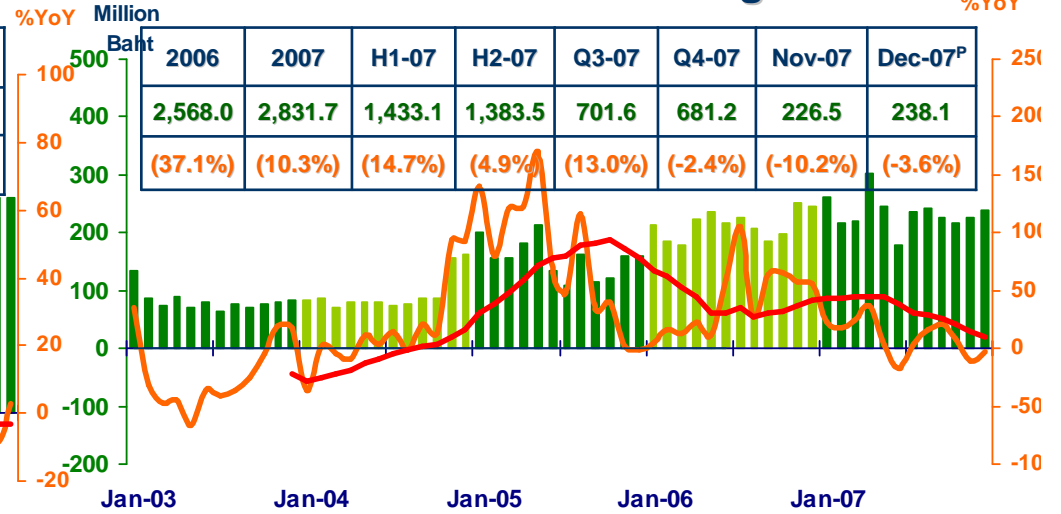
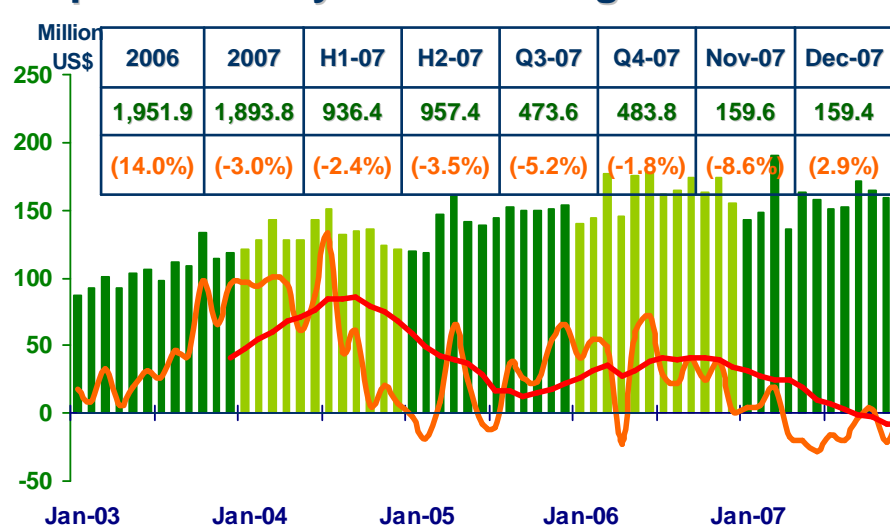


MANUFACTURING

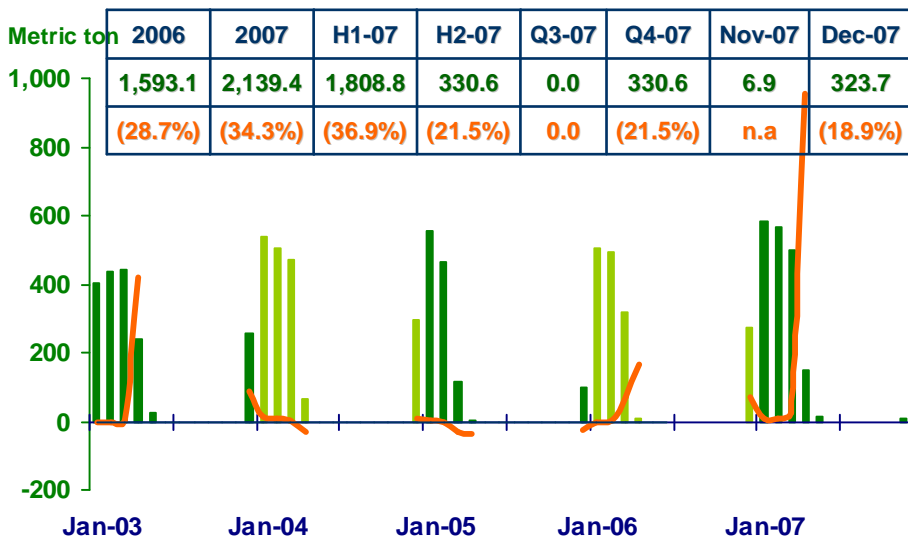
Economic Research Division, Northern Region Office

Export value by Northern Region Industrial Estate

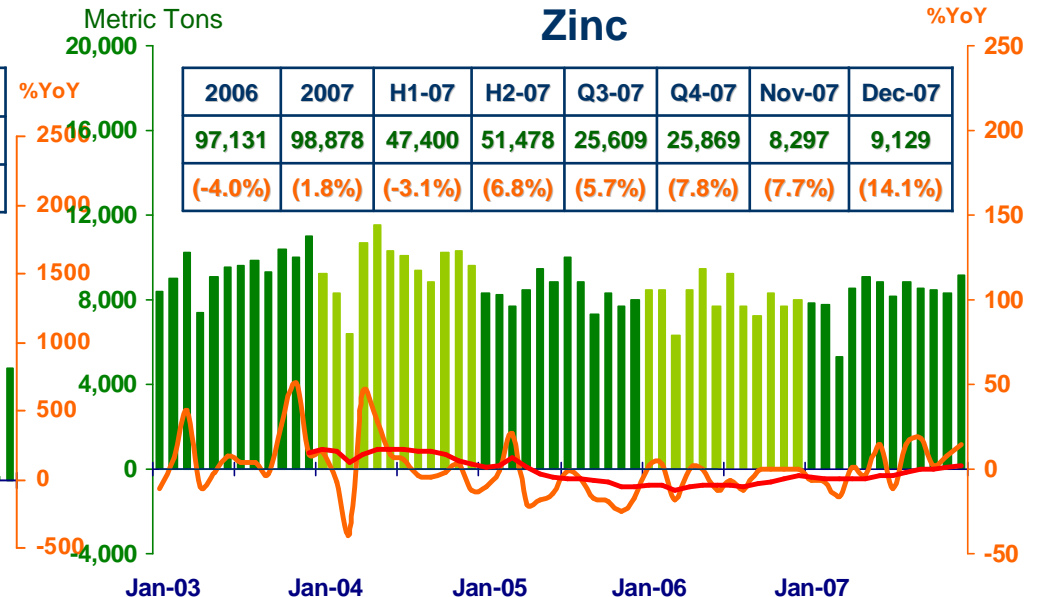
Vat : Manufacturing



Sugar



Zinc



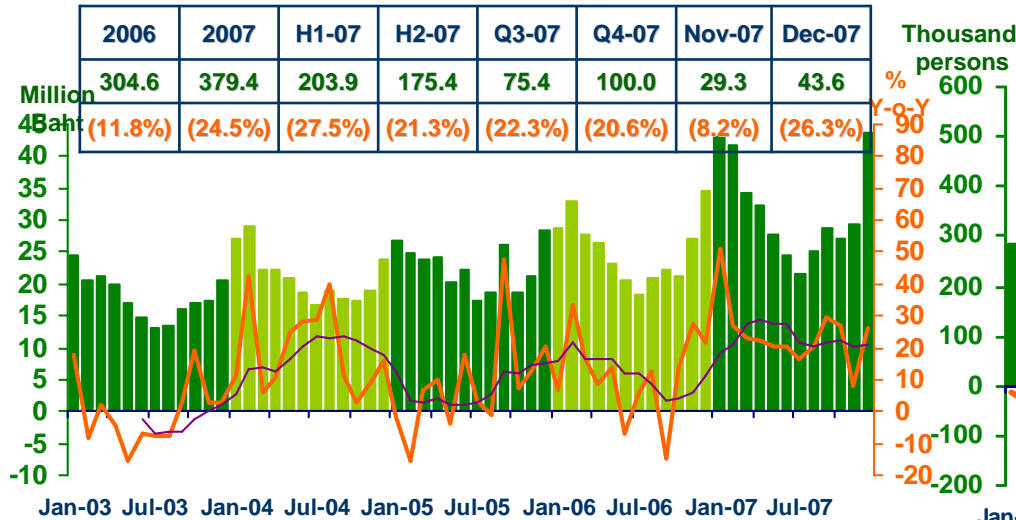
Sources: Lamphun Customs House, Ministry of Finance, Thai Cane and Sugar Cooperation Co. Ltd., and Padaeng Industry Plc.,



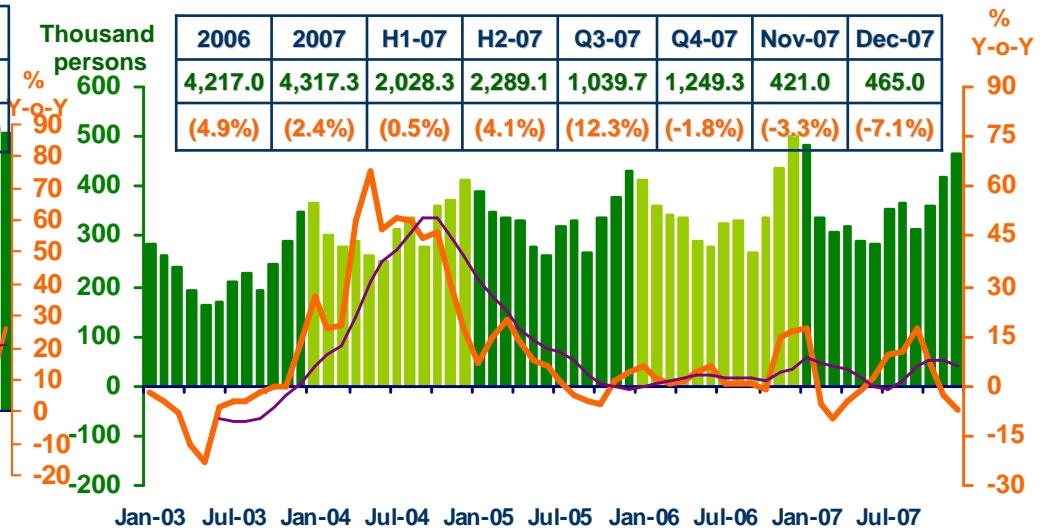
SERVICES

Economic Research Division, Northern Region Office

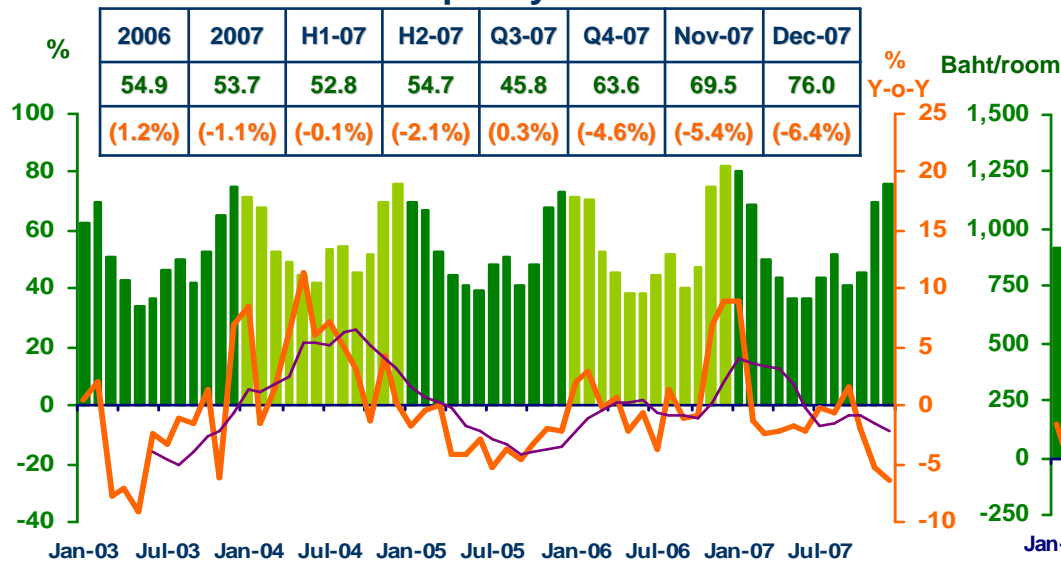
Hotel and restaurant VAT



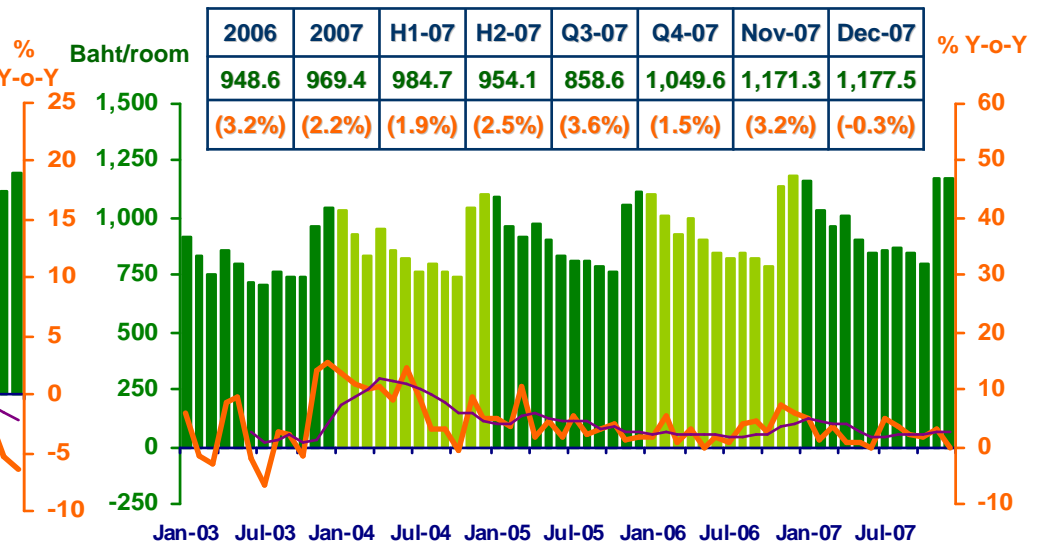
Air passengers



Hotel occupancy rate



Hotel room rate



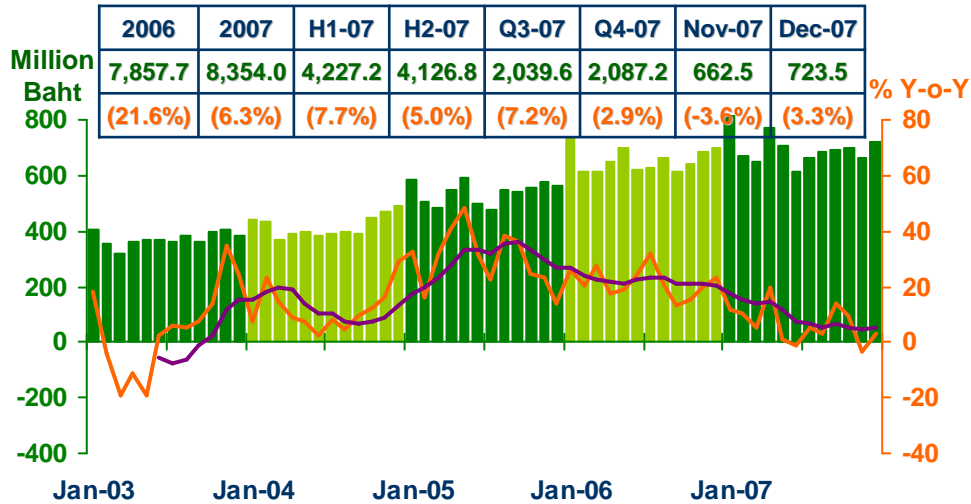
Sources: Ministry of Finance; Airports of Thailand Public Company Limited.; and Data Management Group, Bank of Thailand



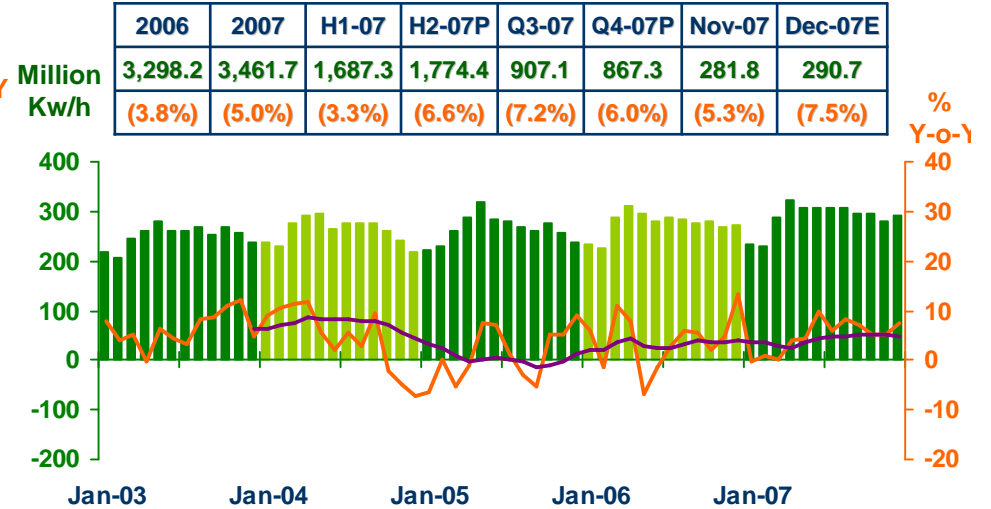
Private Consumption

Economic Research Division, Northern Region Office

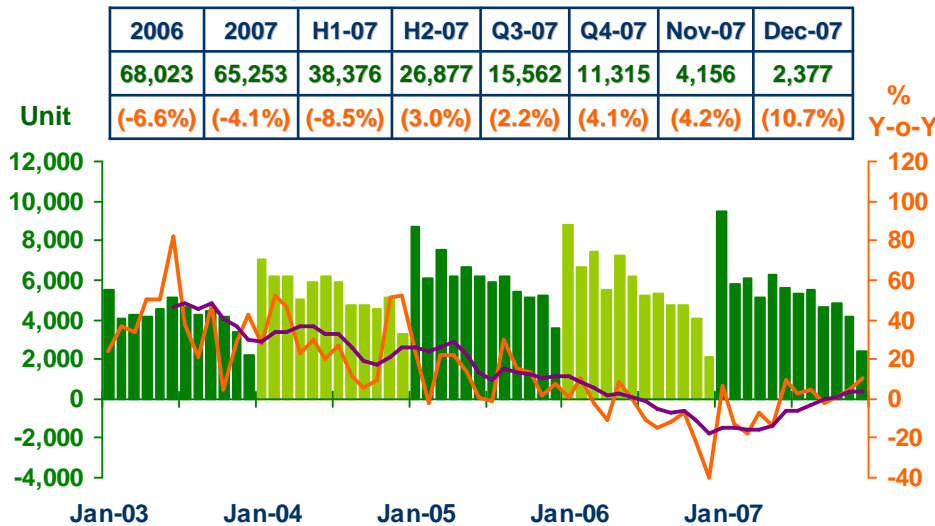
VAT



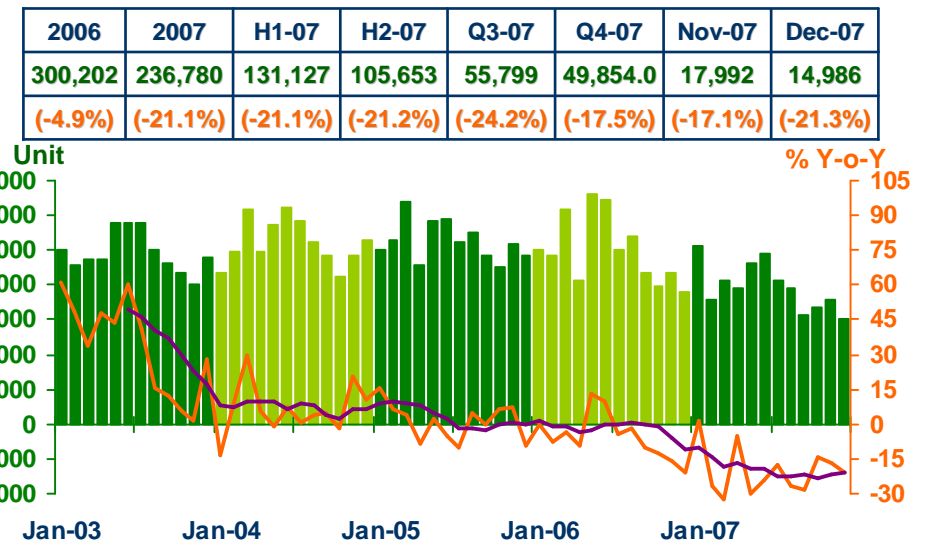
Household electricity consumption



Registered passenger car and registered commercial car



Registered motorcycle

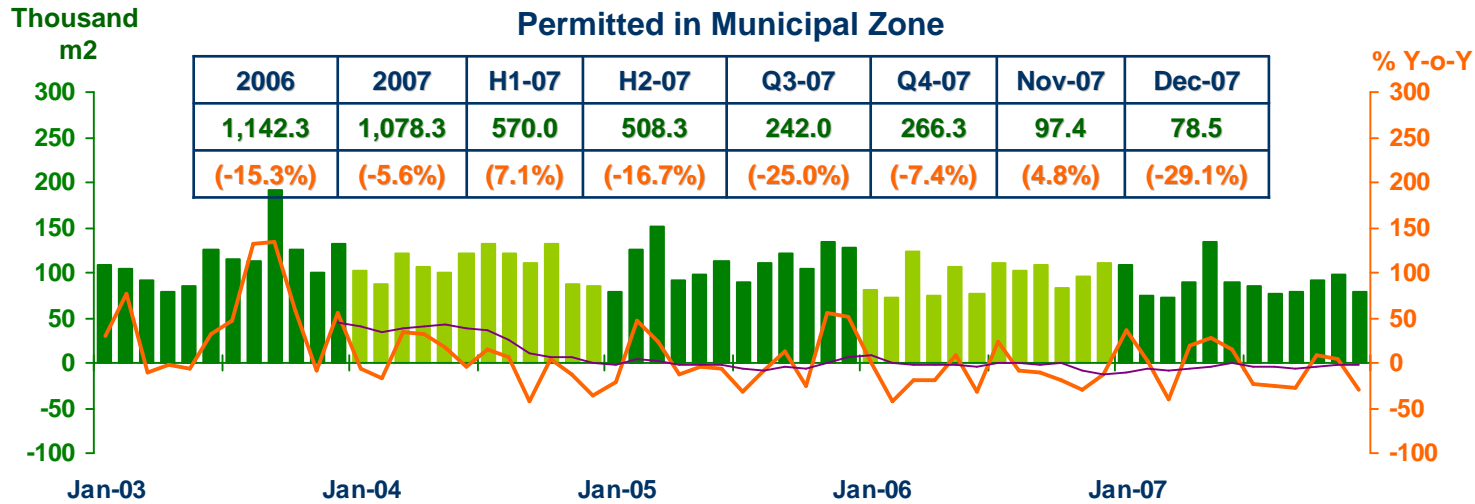




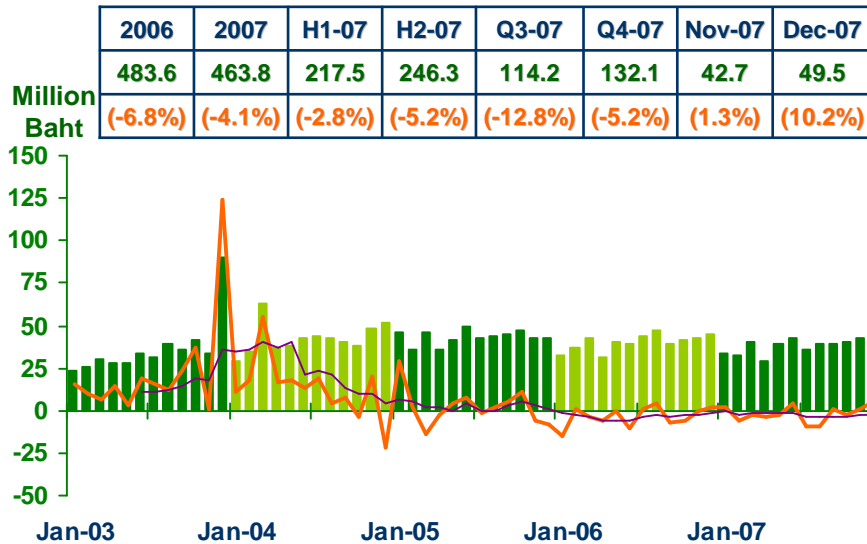
Private Investment

Economic Research Division, Northern Region Office

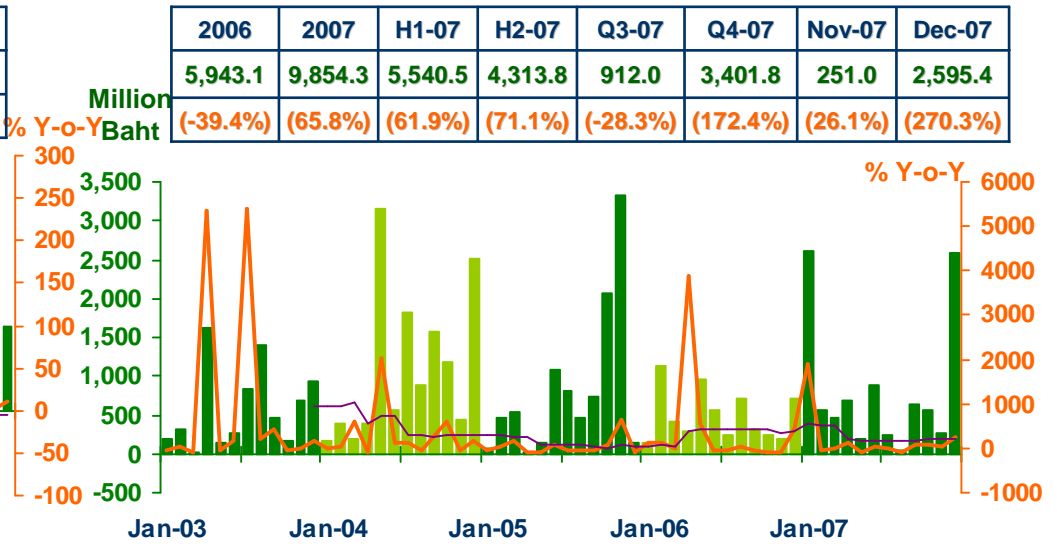
Construction Areas Permitted in Municipal Zone



Land Transaction Fee



Investment Value of Projects Approved by BOI



Sources: Municipality Offices; Provincial Land Offices; Northern Region Investment and Economic Center (BOI)

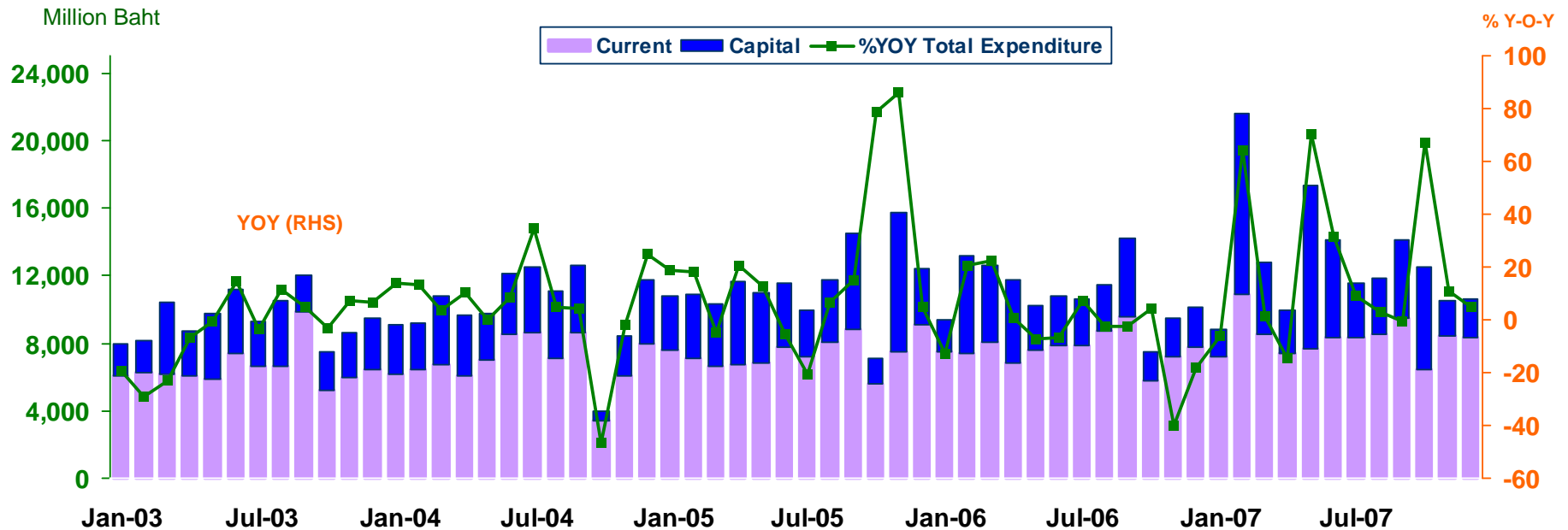


GOVERNMENT SPENDING

Economic Research Division, Northern Region Office

Disbursement recorded at treasury offices in the northern region

Expenditures	2006	2007	2007					
			H1-07	H2-07	Q3-07	Q4-07	Nov-07	Dec-07p
Current	91,977.0	99,573.4	49,965.1	49,608.3	26,390.1	23,218.2	8,434.6	8,359.7
	(3.8)	(8.3)	(10.9)	(5.7)	(0.8)	(12.0)	(17.3)	(7.9)
Capital	39,231.8	56,260.4	34,748.0	21,512.4	11,100.1	10,412.3	2,085.5	2,264.2
	(-19.8)	(43.4)	(52.6)	(30.6)	(9.7)	(64.1)	(-8.2)	(-5.6)
Total	131,208.8	155,833.8	84,713.1	71,120.7	37,490.2	33,630.5	10,520.1	10,623.9
	(-4.6)	(18.8)	(24.9)	(12.2)	(3.3)	(24.2)	(11.2)	(4.7)





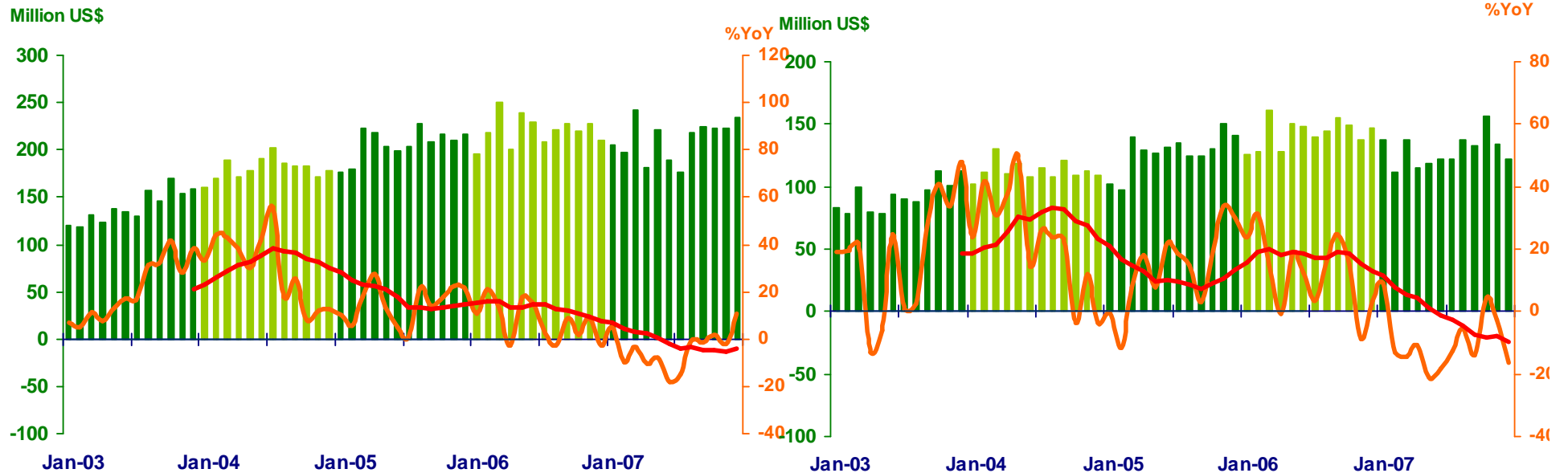
Foreign Trade

Economic Research Division, Northern Region Office

	2006	2007	2007					
			H1	H2	Q3	Q4	Nov	Dec
EXPORTS	2,645.6	2,535.5	1,253.3	1,300.2	620.5	679.6	223.3	233.7
	(7.2%)	(-4.3%)	(-7.4%)	(-1.1%)	(-5.5%)	(3.3%)	(-2.3%)	(11.0%)
IMPORTS	1,715.9	1,546.7	740.9	805.8	392.8	412.9	133.9	122.5
	(11.8%)	(-9.9%)	(-12.1%)	(-7.7%)	(-10.7%)	(-4.7%)	(-2.6%)	(-16.3%)
Trade Balance	932.7	988.8	494.4	494.4	227.7	266.7	89.4	111.2

Exports

Imports



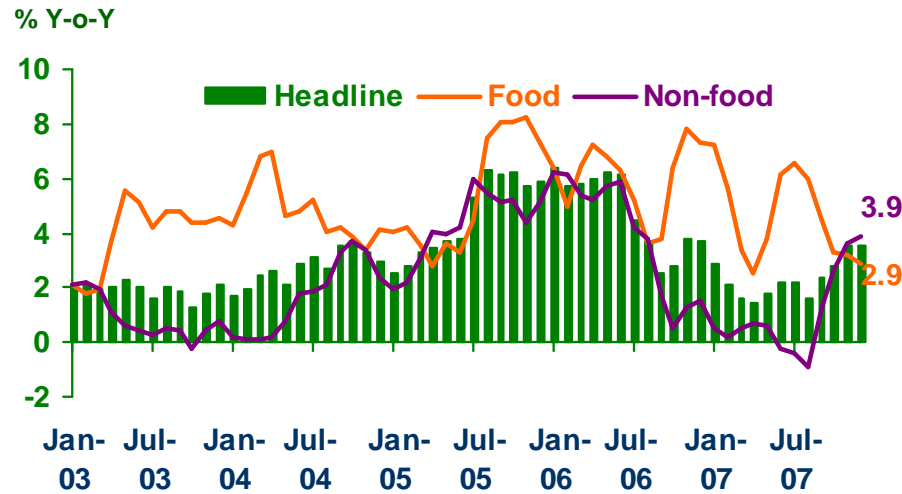
Sources: Customs Department



Price Level

Economic Research Division, Northern Region Office

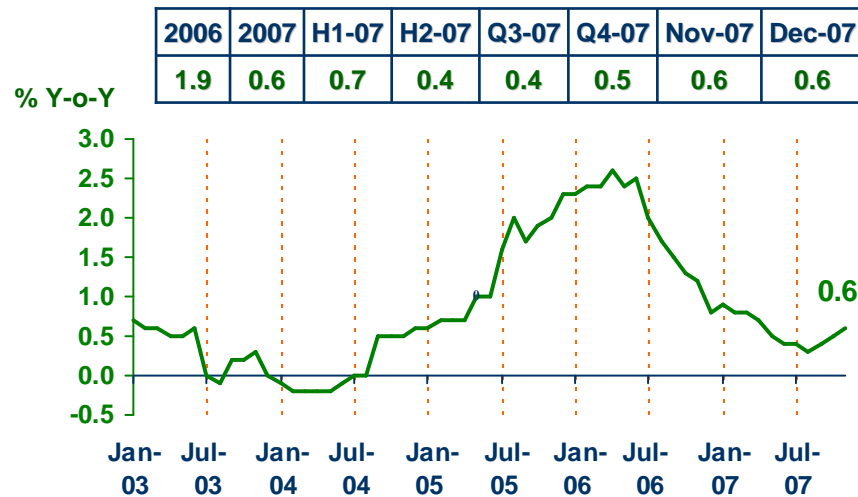
Headline Inflation



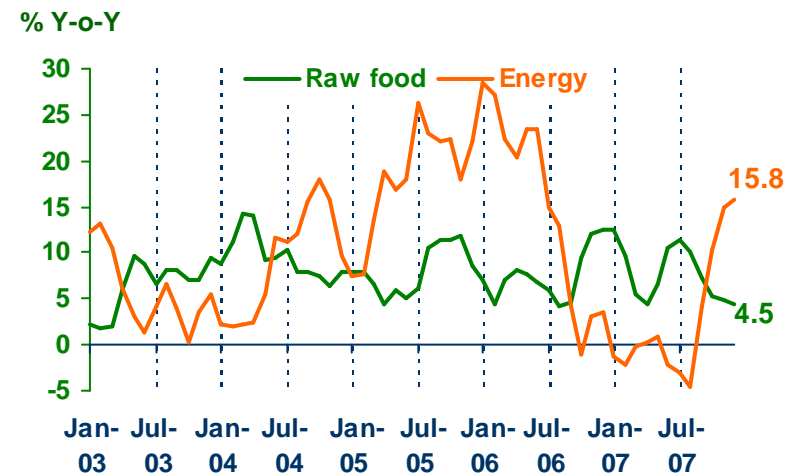
Headline inflation (2002 = 100)

%Y-o-Y	2006	2007	H1-07	H2-07	Q3-07	Q4-07	Nov-07	Dec-07
Headline	4.7	2.3	2.0	2.7	2.1	3.3	3.5	3.5
Food	6.0	4.6	4.7	4.4	5.7	3.2	3.2	2.9
Non-food	3.9	1.0	0.4	1.7	0.0	3.4	3.6	3.9

Core Inflation



Raw food and Energy



Sources: Bureau of Trade and Economic Indices, Ministry of Commerce
 Note: Northern region's Core CPI data has been released since January 2002

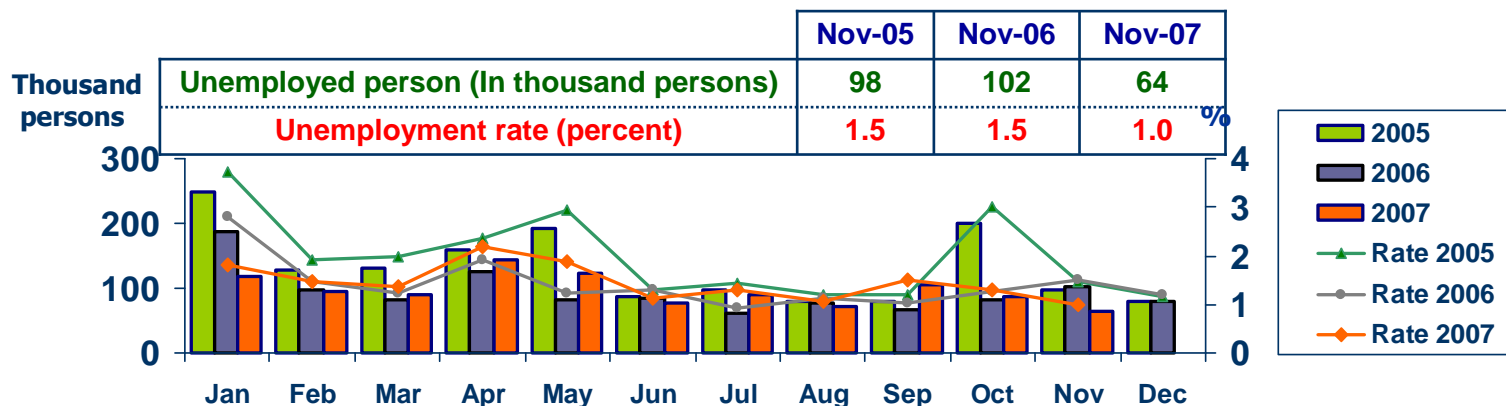


Labor Force Survey

Economic Research Division, Northern Region Office

	% of Total Labor Force (as of Nov 2007)	2006 ($\Delta\%$)	Q1-07 ($\Delta\%$)	Q2-07 ($\Delta\%$)	Q3-07 ($\Delta\%$)	Sep-07 ($\Delta\%$)	Nov-07 ($\Delta\%$)
Labor Force (1,000 Persons)	100.0	6,741	6,534	6,756	6,732	6,647	6,646
Employed persons	98.9	0.3	0.6	3.5	3.0	1.9	-0.5
• Agriculture	47.8	4.5	-0.8	0.2	3.8	-1.7	-2.7
• Non-agriculture	51.1	-4.4	1.9	7.1	2.3	5.2	1.7
- Wholesale & retail trade	14.2	1.7	8.7	3.5	-7.1	3.8	-1.1
- Manufacturing	10.7	-3.5	-6.0	14.2	17.1	-2.8	2.3
- Construction	5.7	-18.7	-16.4	13.5	-5.3	10.6	3.5
- Hotel & restaurants Services	5.5	-15.1	20.4	-3.7	-10.2	22.9	5.1
- Others	15.0	-0.6	8.3	6.7	12.8	5.1	2.2
Unemployed persons	1.0	1.2	10.0	-10.2	57.0	6.0	-37.6
Seasonally inactive persons	0.1	236.1	-49.5	93.9	-28.1	-36.2	-66.6

Unemployment



Source : National Statistical Office



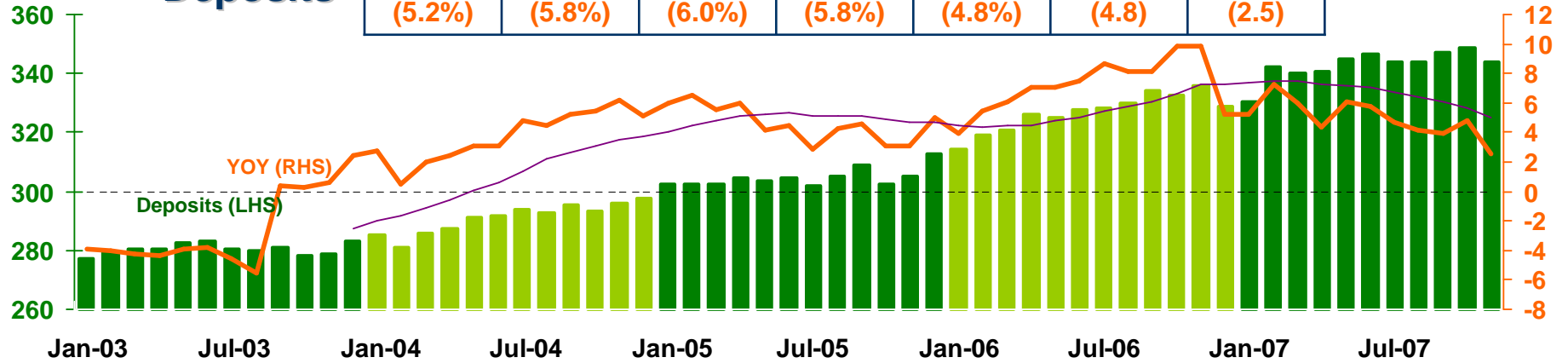
DEPOSITS AND CREDITS OF COMMERCIAL BANKS

Economic Research Division, Northern Region Office

Billion Baht

Deposits

2006	H1-07	Q1-07	Q2-07	Q3-07	Oct-07	Nov-07
328.7	346.4	339.9	346.4	347.0	348.6	344.0
(5.2%)	(5.8%)	(6.0%)	(5.8%)	(4.8%)	(4.8)	(2.5)



Billion Baht

Credits

2006	H1-07	Q1-07	Q2-07	Q3-07	Oct-07	Nov-07
274.5	280.1	277.2	280.1	278.1	281.2	284.8
(9.7%)	(8.3%)	(8.5%)	(8.3%)	(5.2%)	(5.1)	(4.9)

