

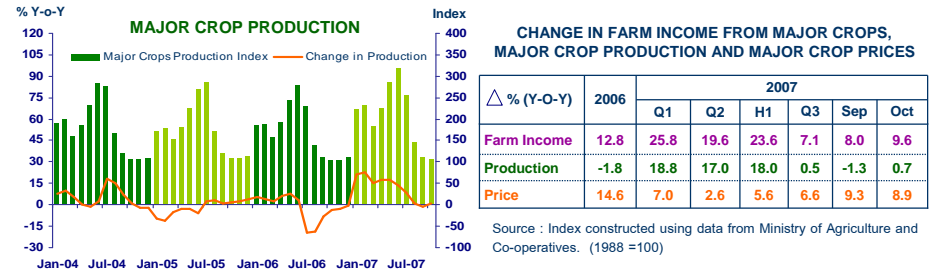
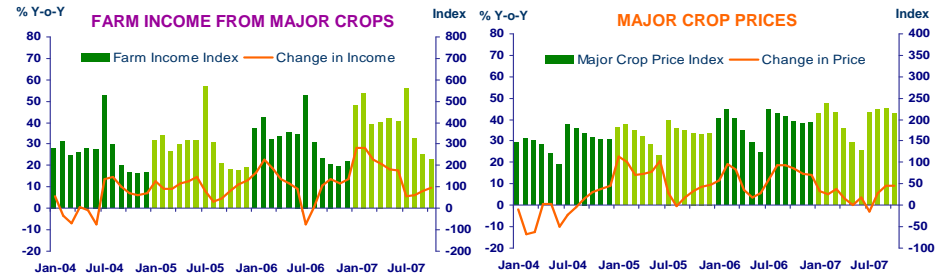


# แถลงข่าวเศรษฐกิจการเงินภาคเหนือ เดือนตุลาคม 2550



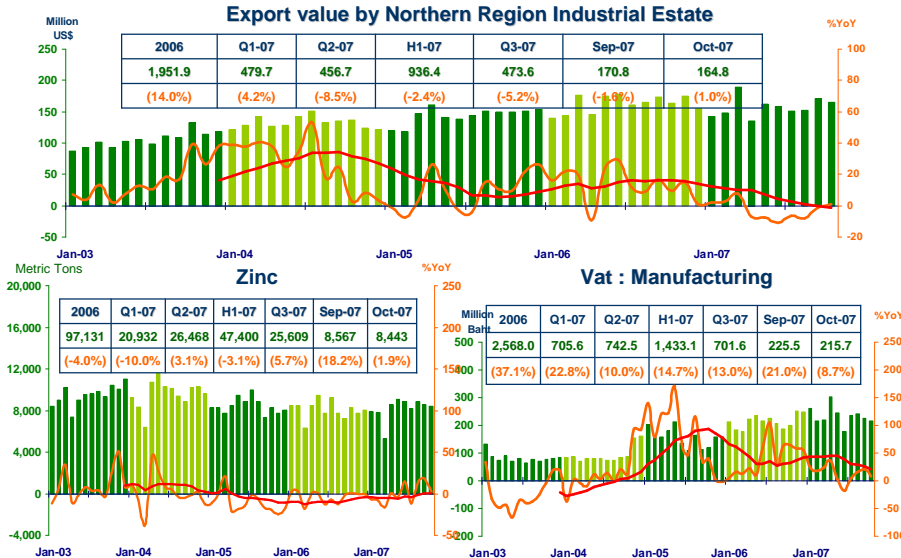
## FARM INCOME FROM MAJOR CROPS

Economic Research Division, Northern Region Office



## MANUFACTURING

Economic Research Division, Northern Region Office

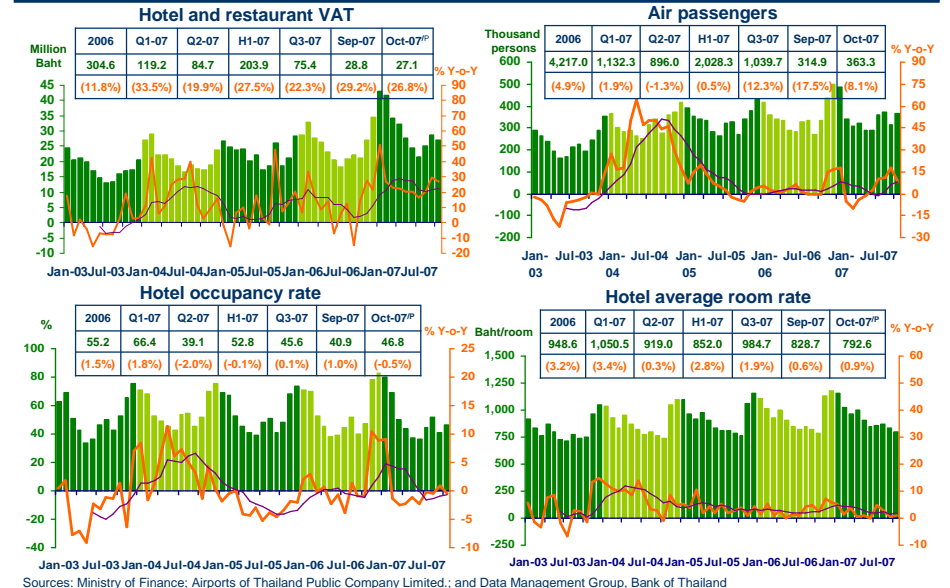


Sources: Customs Department ; Pa-Dang Industry Co., Ltd.; and Ministry of Finance



## SERVICES

Economic Research Division, Northern Region Office



Sources: Ministry of Finance; Airports of Thailand Public Company Limited.; and Data Management Group, Bank of Thailand

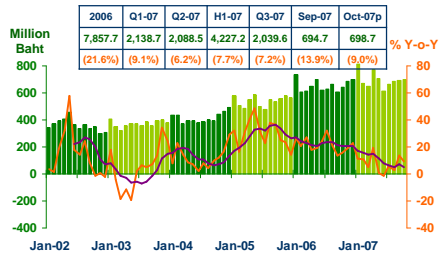


# Private Consumption

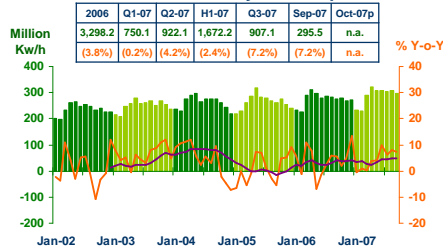
5

Economic Research Division, Northern Region Office

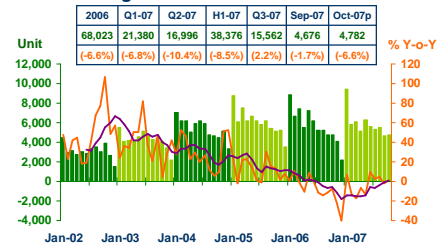
## VAT



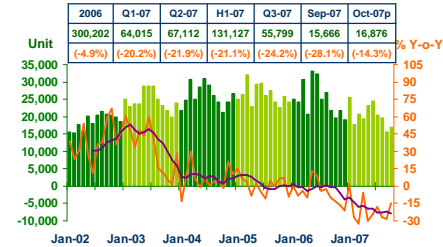
## Household electricity consumption



## Registered passenger car and registered commercial car



## Registered motorcycle



Sources: Ministry of Finance, Provincial Electricity Authority, Provincial Land Transportation Offices

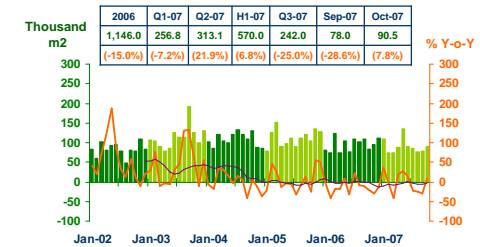


# Private Investment

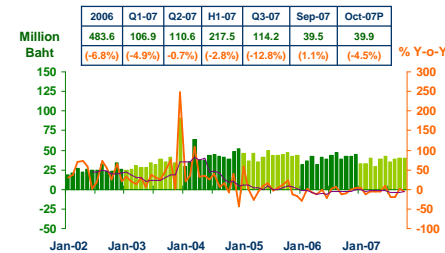
6

Economic Research Division, Northern Region Office

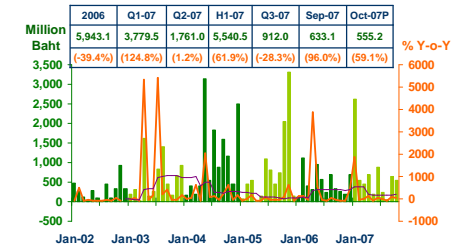
## Construction Areas Permitted in Municipal Zone



## Land Transaction Fee



## Investment Value of Projects Approved by BOI



Sources: Municipality Offices; Provincial Land Offices; Customs Department; Northern Region Investment and Economic Center (BOI)



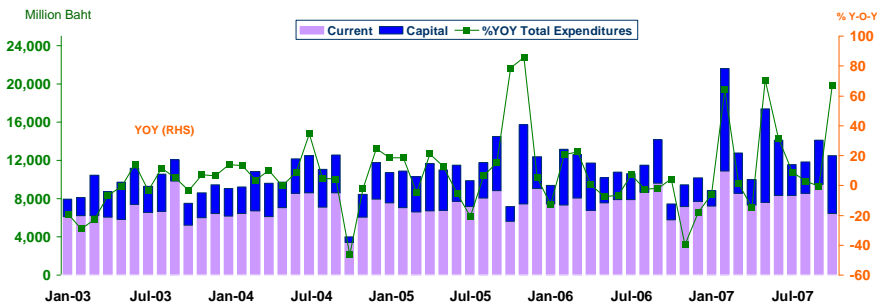
# Government Spending

7

Economic Research Division, Northern Region Office

## Expenditures

Expenditures	2006	2007					
		Q1-07	Q2-07	H1-07	Q3-07	Sep-07	Oct-07p
<b>Current</b>	<b>91,977.0</b>	<b>26,675.7</b>	<b>23,289.4</b>	<b>49,965.1</b>	<b>26,390.1</b>	<b>9,480.7</b>	<b>6,423.5</b>
	(3.8)	(16.8)	(4.7)	(10.9)	(0.8)	(-1.2)	(10.8)
<b>Capital</b>	<b>39,231.8</b>	<b>16,549.0</b>	<b>18,199.0</b>	<b>34,748.0</b>	<b>11,100.1</b>	<b>4,614.5</b>	<b>6,058.9</b>
	(-19.8)	(34.2)	(74.4)	(52.6)	(9.7)	(0.5)	(262.0)
<b>Total</b>	<b>131,208.8</b>	<b>43,224.7</b>	<b>41,488.4</b>	<b>84,713.1</b>	<b>37,490.2</b>	<b>14,095.2</b>	<b>12,482.4</b>
	(-4.6)	(22.9)	(27.0)	(24.9)	(3.3)	(-0.7)	(67.1)



Sources: GFMS & BOT



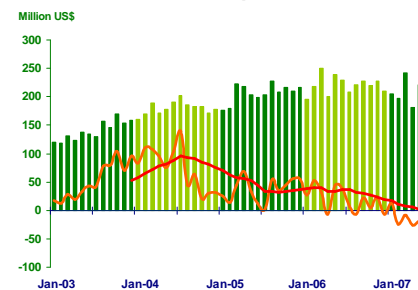
# Foreign Trade

8

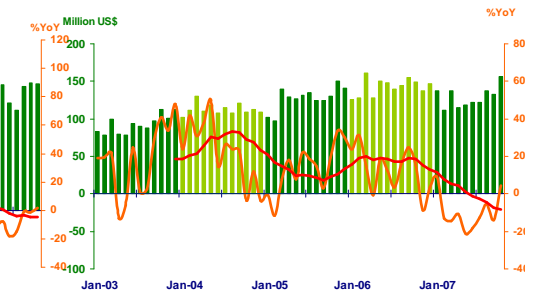
Economic Research Division, Northern Region Office

	2006	2007					
		Q1	Q2	H1	Q3	Sep	Oct
<b>EXPORTS</b>	<b>2,645.6</b>	<b>645.3</b>	<b>590.0</b>	<b>1,253.3</b>	<b>620.5</b>	<b>225.1</b>	<b>222.6</b>
	(7.2%)	(-2.8%)	(-11.9%)	(-7.4%)	(-5.5%)	(-1.2%)	(1.6%)
<b>IMPORTS</b>	<b>1,715.9</b>	<b>386.3</b>	<b>354.6</b>	<b>740.9</b>	<b>392.8</b>	<b>133.2</b>	<b>156.6</b>
	(11.8%)	(-7.0%)	(-17.0%)	(-12.1%)	(-10.7%)	(-13.9%)	(4.6%)
<b>Trade Balance</b>	<b>932.7</b>	<b>259.0</b>	<b>235.4</b>	<b>494.4</b>	<b>227.7</b>	<b>91.9</b>	<b>66.0</b>

## Exports



## Imports



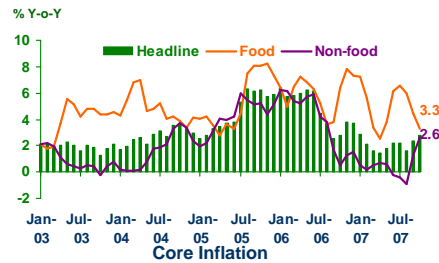
Sources: Customs Department



# Price Level

Economic Research Division, Northern Region Office

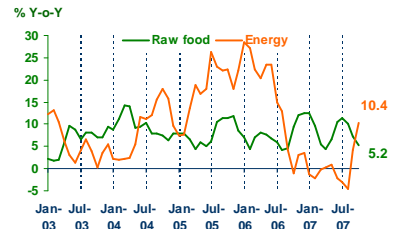
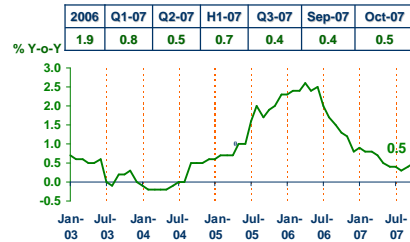
## Headline Inflation



Headline inflation (2002 = 100)

%Y-o-Y	2006	Q1-07	Q2-07	H1-07	Q3-07	Sep-07	Oct-07
Headline	4.7	2.2	1.8	2.0	2.1	2.4	2.8
Food	6.0	5.4	4.1	4.7	5.7	4.5	3.3
Non-food	3.9	0.4	0.4	0.4	0.0	1.3	2.6

## Raw food and Energy



Sources: Bureau of Trade and Economic Indices, Ministry of Commerce  
 Note: Northern region's Core CPI data has been released since January 2002

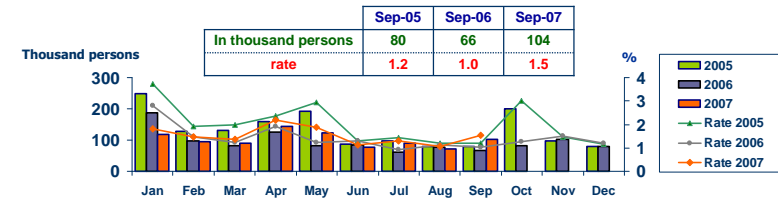


# Labor Force Survey

Economic Research Division, Northern Region Office

	% of Total Labor Force (as of Sep 2007)	2006 (Δ%)	Q1-07 (Δ%)	Q2-07 (Δ%)	Aug-07 (Δ%)	Sep-07 (Δ%)
Labor Force (1,000 Persons)	100.0	6,741	6,534	6,756	6,825	6,732
Employed persons	98.3	0.3	0.6	3.5	0.7	3.0
• Agriculture	48.6	4.5	-0.8	0.2	0.1	3.8
• Non-agriculture	49.7	-4.4	1.9	7.1	1.3	2.3
- Wholesale & retail trade	13.5	1.7	8.7	3.5	1.0	-7.1
- Manufacturing	10.5	-3.5	-6.0	14.2	-7.5	17.1
- Construction	6.5	-18.7	-16.4	13.5	-6.7	-5.3
- Hotel & restaurants Services	5.2	-15.1	20.4	-3.7	25.0	-10.2
- Others	14.0	-0.6	8.3	6.7	3.2	12.8
Unemployed persons	1.5	1.2	10.0	-10.2	-4.0	57.0
Seasonally inactive persons	0.2	236.1	-49.5	93.9	59.9	-28.1

## Unemployment

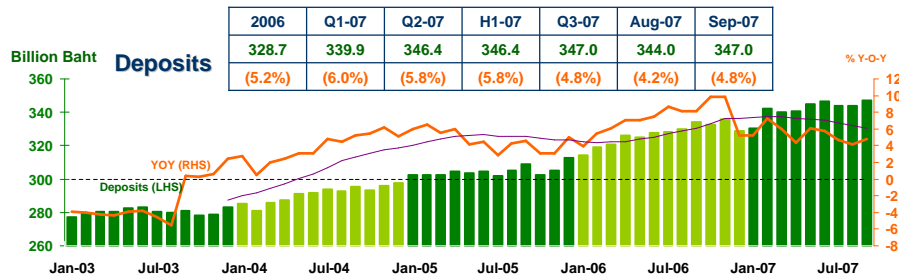


Source : National Statistical Office

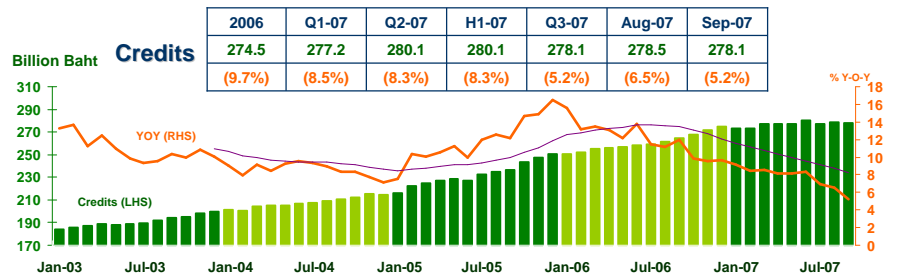


# DEPOSITS AND CREDITS OF COMMERCIAL BANKS

Economic Research Division, Northern Region Office



2006	Q1-07	Q2-07	H1-07	Q3-07	Aug-07	Sep-07
328.7	339.9	346.4	346.4	347.0	344.0	347.0
(5.2%)	(6.0%)	(5.8%)	(5.8%)	(4.8%)	(4.2%)	(4.8%)



2006	Q1-07	Q2-07	H1-07	Q3-07	Aug-07	Sep-07
274.5	277.2	280.1	280.1	278.1	278.5	278.1
(9.7%)	(8.5%)	(8.3%)	(8.3%)	(5.2%)	(6.5%)	(5.2%)

Source : Bank of Thailand