



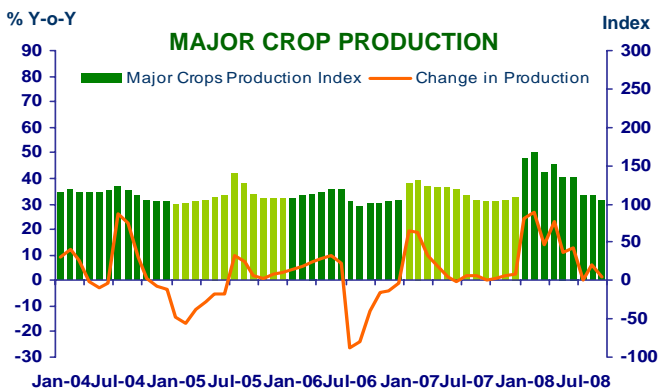
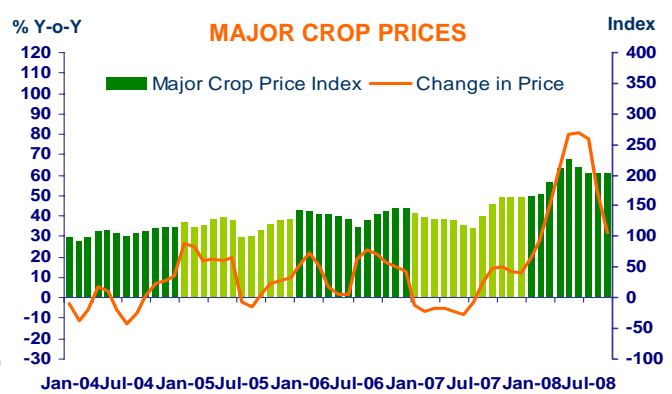
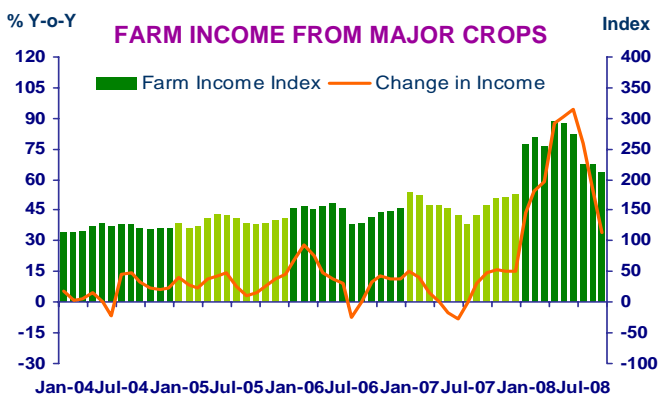
แถลงข่าวเศรษฐกิจการเงินภาคเหนือ

เดือนกันยายน 2551 และ 9 เดือน ปี 2551



FARM INCOME FROM MAJOR CROPS

Economic Research Division, Northern Region Office



CHANGE IN FARM INCOME FROM MAJOR CROPS, MAJOR CROP PRODUCTION AND MAJOR CROP PRICES

△ % (Y-O-Y)	2007	2008						
		H1	Q1	Q2	Q3	9M	Aug	Sep
Farm Income	11.4	65.2	53.5	88.8	46.6	59.3	57.8	33.7
Production	5.1	20.1	20.6	19.4	2.7	14.7	6.0	1.6
Price	6.3	45.1	32.9	69.4	43.9	44.6	51.8	32.1

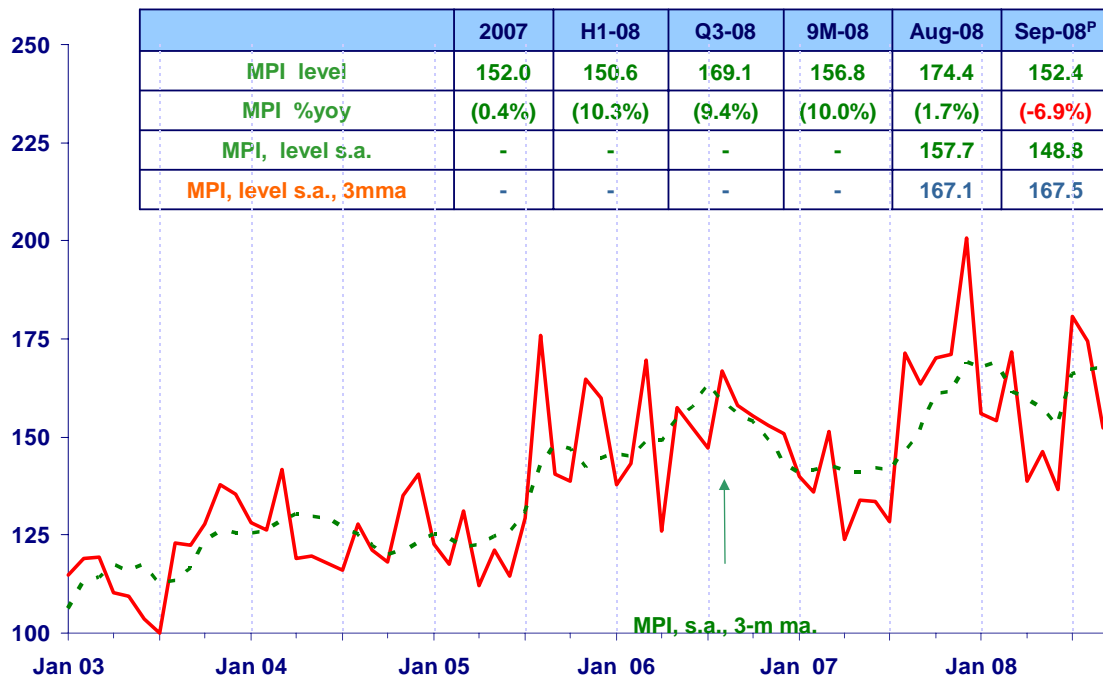
Source : Index constructed using data from Ministry of Agriculture and Co-operatives. (2002 =100)



MANUFACTURING

Economic Research Division, Northern Region Office

MPI_NORTHERN



Sources: Index constructed using data from Customs Department, Excise Department and BOT Northern Region Survey. (2002=100)

P = Preliminary (83.0% coverage)

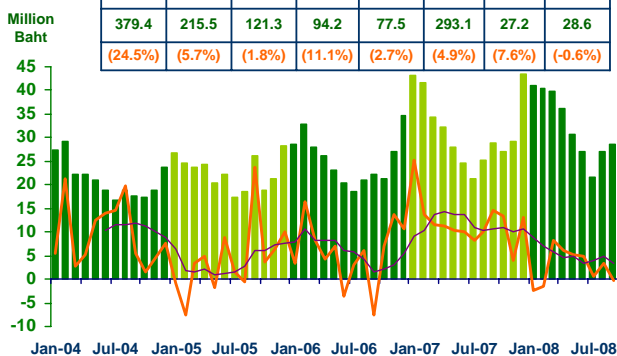


SERVICES

Economic Research Division, Northern Region Office

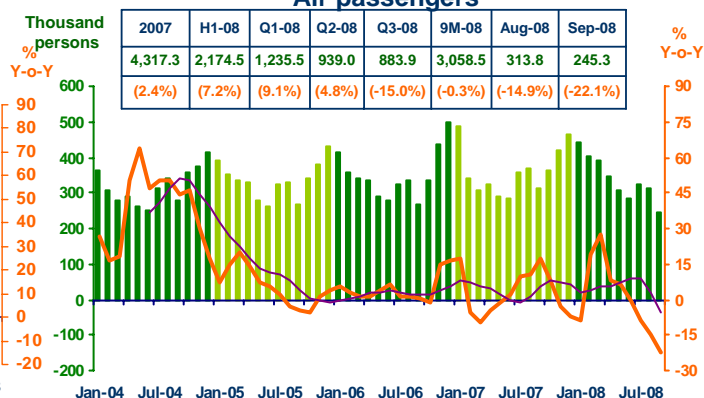
Hotel and restaurant VAT

2007	H1-08	Q1-08	Q2-08	Q3-08	9M-08	Aug-08	Sep-08
379.4	215.5	121.3	94.2	77.5	293.1	27.2	28.6
(24.5%)	(5.7%)	(1.8%)	(11.1%)	(2.7%)	(4.9%)	(7.6%)	(-0.6%)



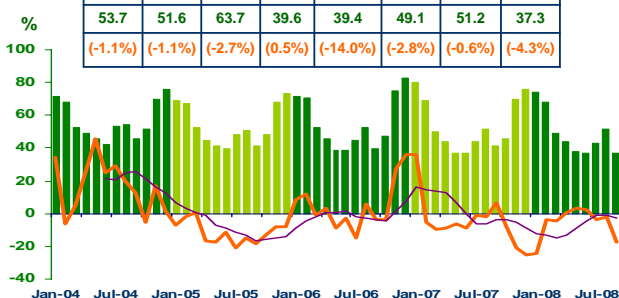
Air passengers

2007	H1-08	Q1-08	Q2-08	Q3-08	9M-08	Aug-08	Sep-08
4,317.3	2,174.5	1,235.5	939.0	883.9	3,058.5	313.8	245.3
(2.4%)	(7.2%)	(9.1%)	(4.8%)	(-15.0%)	(-0.3%)	(-14.9%)	(-22.1%)



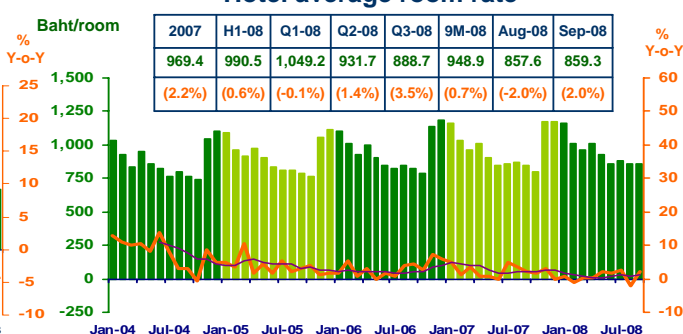
Hotel occupancy rate

2007	H1-08	Q1-08	Q2-08	Q3-08	9M-08	Aug-08	Sep-08
53.7	51.6	63.7	39.6	39.4	49.1	51.2	37.3
(-1.1%)	(-1.1%)	(-2.7%)	(0.5%)	(-14.0%)	(-2.8%)	(-0.6%)	(-4.3%)



Hotel average room rate

2007	H1-08	Q1-08	Q2-08	Q3-08	9M-08	Aug-08	Sep-08
969.4	990.5	1,049.2	931.7	888.7	948.9	857.6	859.3
(2.2%)	(0.6%)	(-0.1%)	(1.4%)	(3.5%)	(0.7%)	(-2.0%)	(2.0%)



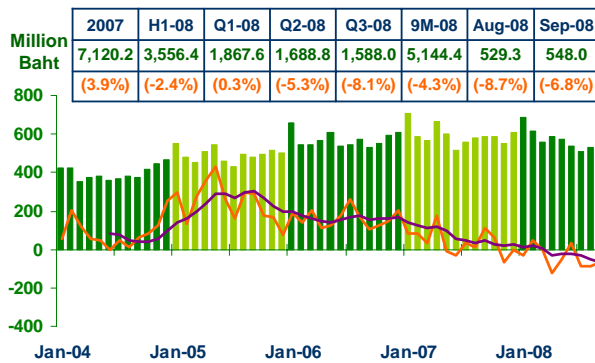
Sources: Ministry of Finance; Airports of Thailand Public Company Limited.; and Data Management Group, Bank of Thailand



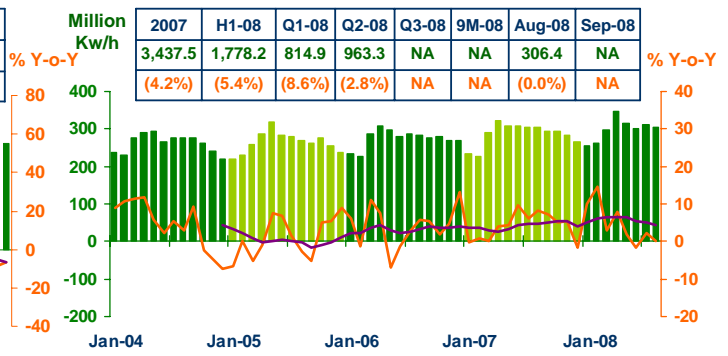
Private Consumption

Economic Research Division, Northern Region Office

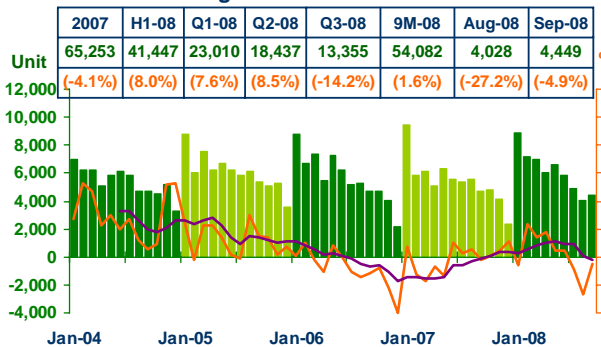
VAT (Real Term)



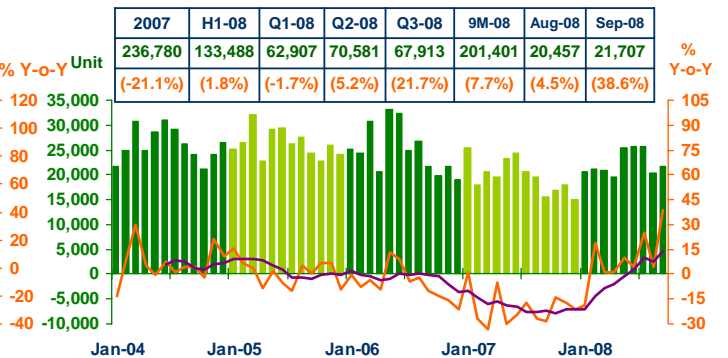
Household electricity consumption



Registered passenger car and registered commercial car



Registered motorcycle



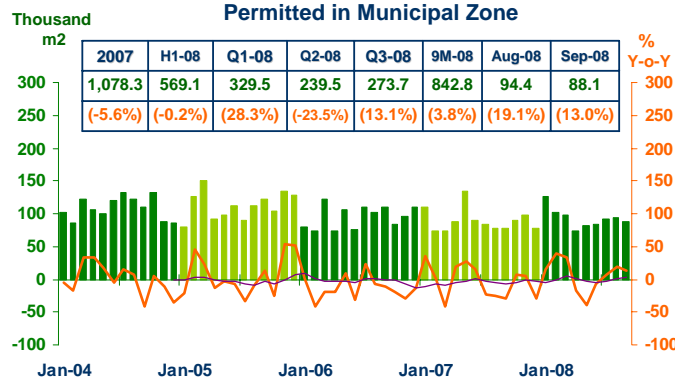
Sources: Ministry of Finance, Provincial Electricity Authority, Provincial Land Transportation Offices



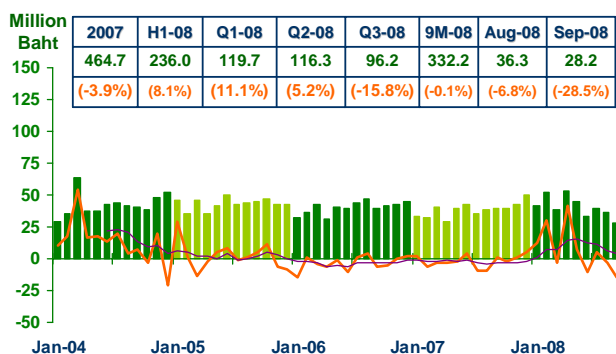
Private Investment

Economic Research Division, Northern Region Office

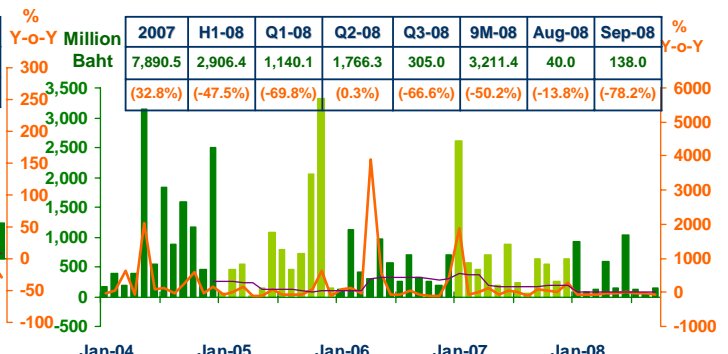
Construction Areas Permitted in Municipal Zone



Land Transaction Fee



Investment Value of Projects Approved by BOI



Sources: Municipality Offices; Provincial Land Offices; Customs Department; Northern Region Investment and Economic Center (BOI)

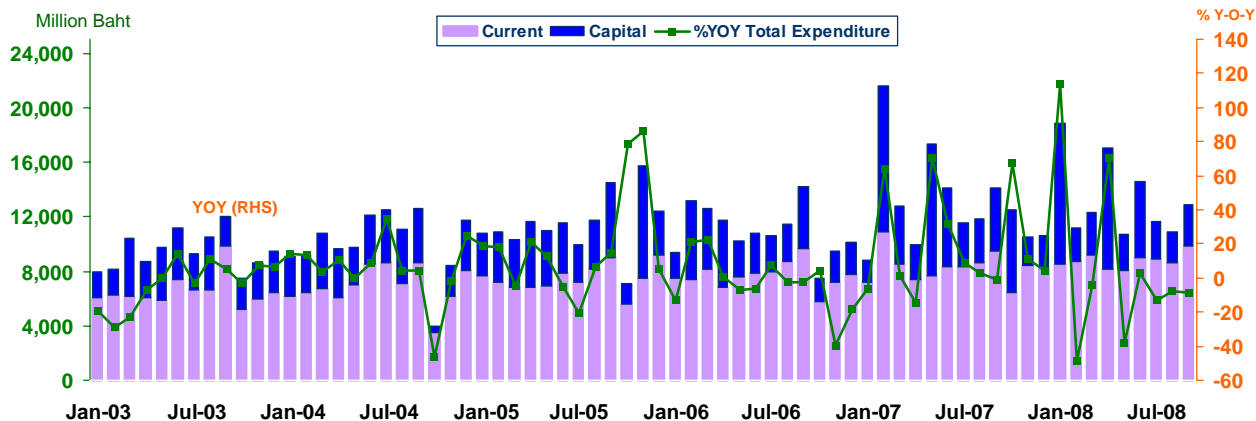


การเบิกจ่ายเงินงบประมาณผ่านคลังจังหวัดในภาคเหนือ

Economic Research Division, Northern Region Office

Actual Expenditures

Expenditure	2007	2008					
		H1-08	Q1-08	Q2-08	Q3-08	Aug-08	Sep-08
Current	99,637.7	51,625.9	26,463.7	25,162.2	27,330.0	8,637.8	9,805.6
	(8.0)	(3.3)	(-0.8)	(8.0)	(3.5)	(0.8)	(3.2)
Capital	56,196.0	33,051.0	15,907.5	17,143.5	8,071.5	2,241.8	3,043.8
	(44.3)	(-4.8)	(-3.9)	(-5.7)	(-27.1)	(-31.2)	(-33.8)
Total	155,833.7	84,676.9	42,371.2	42,305.7	35,401.5	10,879.6	12,849.4
	(18.8)	(0.0)	(-2.0)	(2.0)	(-5.6)	(-8.0)	(-8.8)



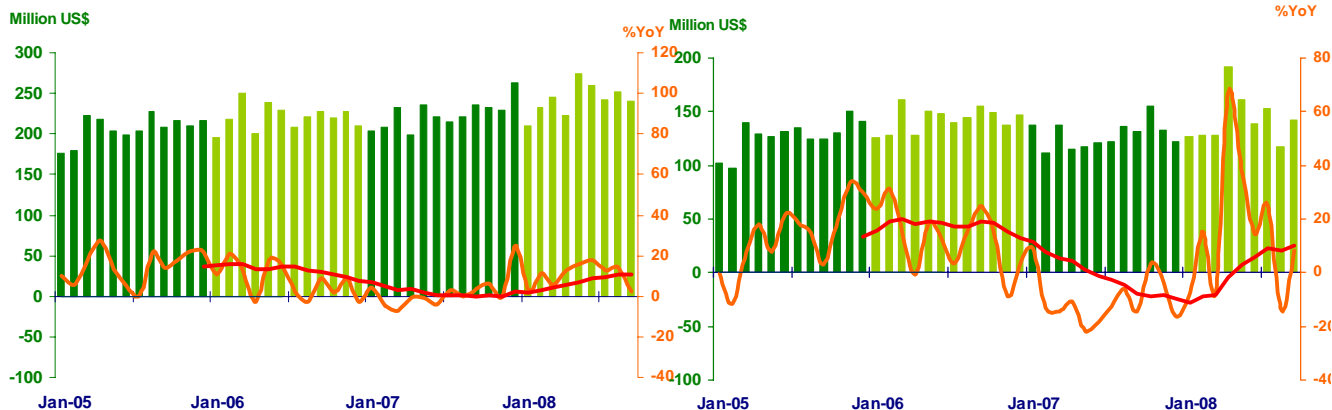
Foreign Trade

Economic Research Division, Northern Region Office

	2007	2008					
		H1	Q1	Q2	Q3	Aug	Sep
EXPORTS	2,697.8	1,446.0	687.9	758.1	734.9	251.8	240.9
	(1.9%)	(11.1%)	(6.7%)	(15.5%)	(9.4%)	(14.0%)	(2.1%)
IMPORTS	1,539.9	875.2	383.5	491.7	413.1	117.6	142.4
	(-10.3%)	(18.3%)	(-0.7%)	(39.1%)	(5.8%)	(-13.8%)	(8.0%)
Trade Balance	1,157.9	570.8	304.4	266.4	321.8	134.2	98.5

Export

Import

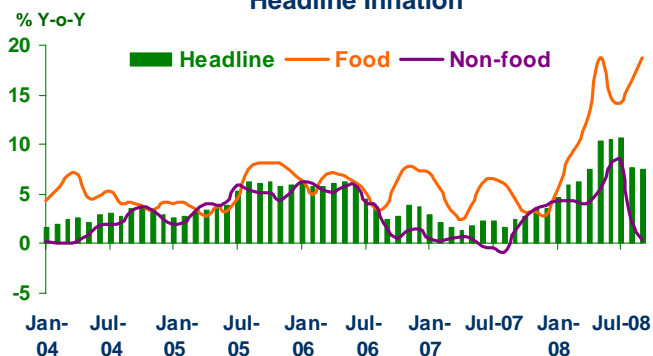




Price Level

Economic Research Division, Northern Region Office

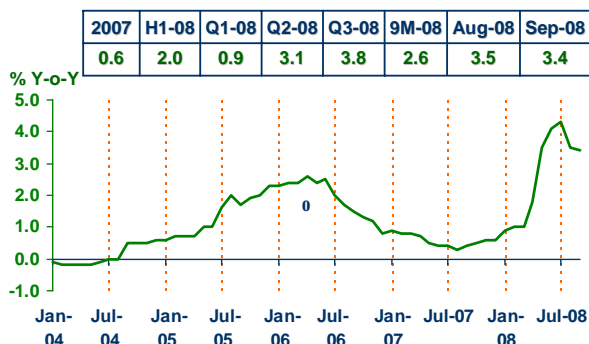
Headline Inflation



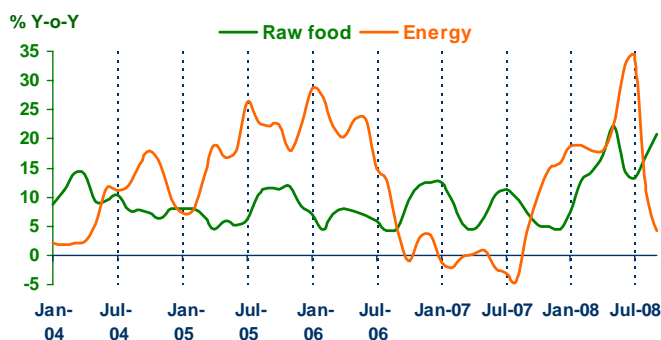
Headline inflation (2002 = 100)

	2007	2008						
		H1	Q1	Q2	Q3	9M	Aug	Sep
Headline	2.3	7.6	5.6	9.5	8.6	7.9	7.7	7.5
Food	4.6	11.8	8.0	15.5	16.5	13.4	16.4	18.8
Non-food	1.0	5.0	4.2	5.9	3.7	4.6	2.2	0.4

Core Inflation



Rawfood and Energy



Sources: Bureau of Trade and Economic Indices, Ministry of Commerce
 Note: Northern region's Core CPI data has been released since January 2002

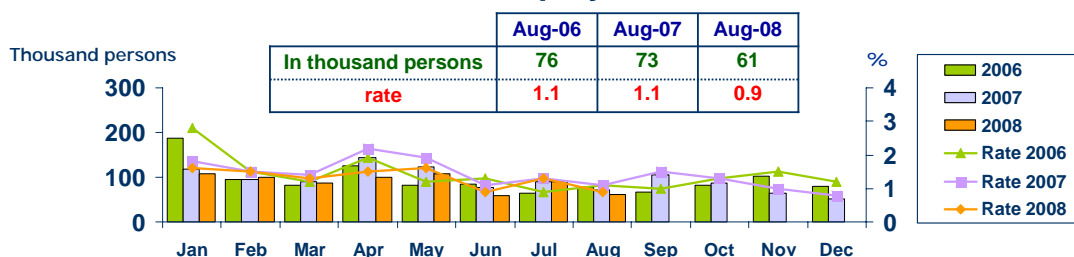


Labor Force Survey

Economic Research Division, Northern Region Office

	% of Total Labor Force (as of Aug 2008)	Q1-07 (Δ%)	Q2-07 (Δ%)	Q3-07 (Δ%)	Q4-07 (Δ%)	Q1-08 (Δ%)	Q2-08 (Δ%)	July-08 (Δ%)	Aug-08 (Δ%)
Labor Force (1,000 Persons)	100.0	6,534	6,756	6,732	6,716	6,629	6,642	7,042	7,151
Employed persons	99.0	0.6	3.5	3.0	0.1	1.4	-1.1	3.3	5.1
• Agriculture	51.0	-0.8	0.2	3.8	2.4	-0.1	-9.5	2.7	8.8
• Non-agriculture	48.0	1.9	7.1	2.3	-2.6	2.7	7.5	3.8	1.5
- Wholesale & retail trade	13.5	8.7	3.5	-7.1	-11.9	0.1	12.4	2.3	1.2
- Manufacturing	8.6	-6.0	14.2	17.1	-2.9	-3.7	-15.7	-15.8	-12.3
- Construction	5.6	-16.4	13.5	-5.3	-2.9	2.2	-4.6	7.2	29.3
- Hotel & restaurants Services	5.4	20.4	-3.7	-10.2	2.9	-3.0	14.6	2.8	-5.3
- Others	14.9	8.3	6.7	12.8	4.6	12.6	24.7	20.7	5.6
Unemployed persons	0.9	10.0	-10.2	57.0	-35.1	-10.3	-21.0	1.3	-16.1
Seasonally inactive persons	0.1	-49.5	93.9	-28.1	-27.9	43.5	-83.0	1,803.2	-56.1

Unemployment



Source : National Statistical Office



DEPOSITS AND CREDITS OF COMMERCIAL BANKS

Economic Research Division, Northern Region Office

