



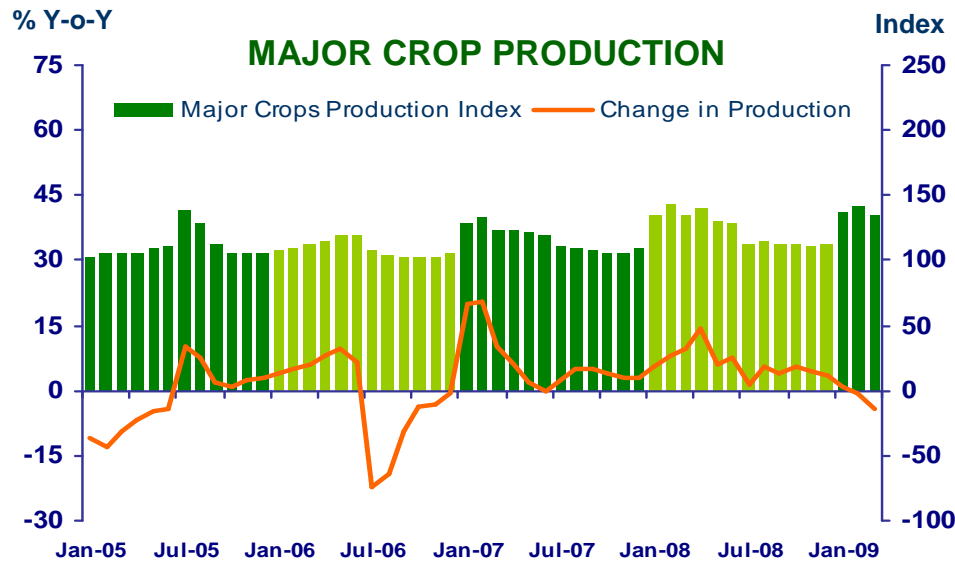
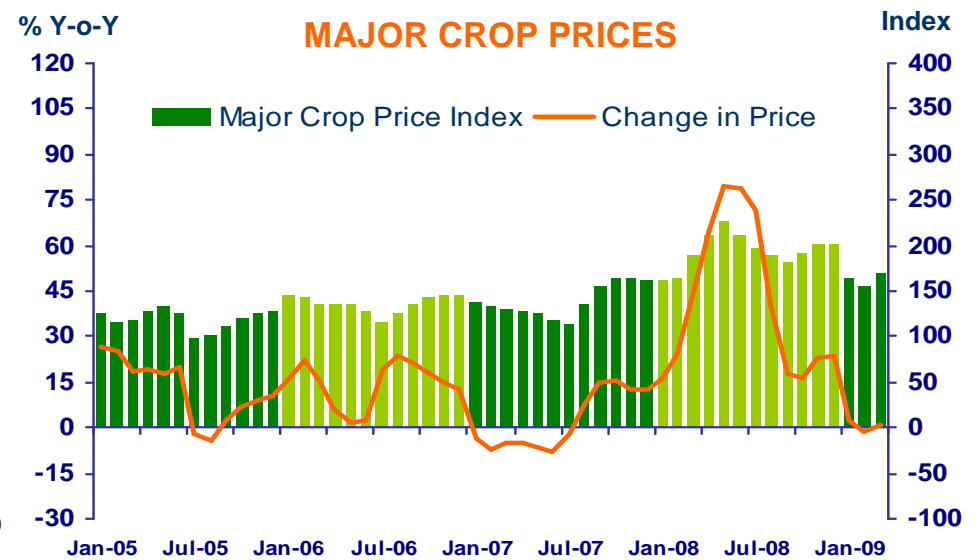
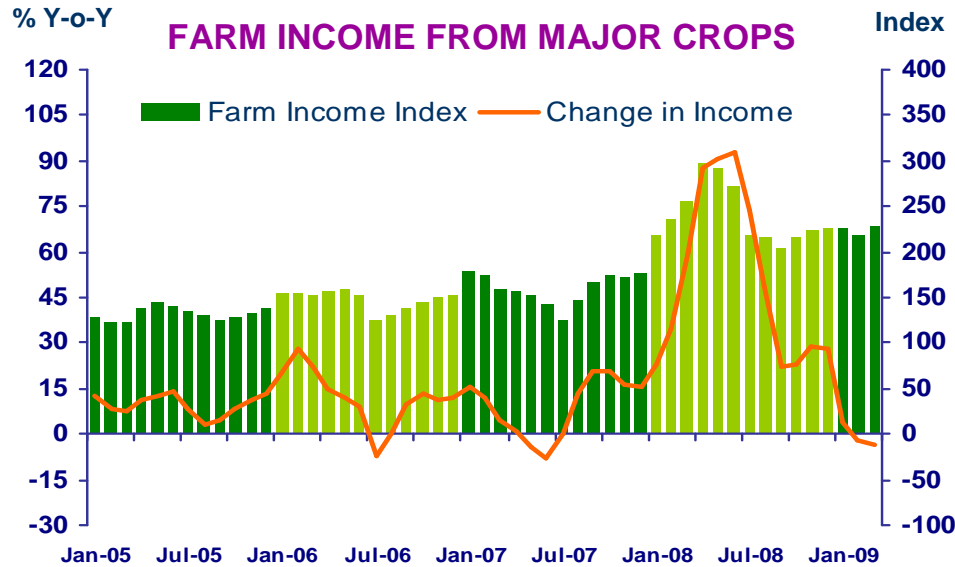
เศรษฐกิจการเงินภาคเหนือ
เดือนมีนาคม 2552 และไตรมาสแรก ปี 2552

ธนาคารแห่งประเทศไทย สำนักงานภาคเหนือ



FARM INCOME FROM MAJOR CROPS

ส่วนเศรษฐกิจภาค สำนักงานภาคเหนือ



CHANGE IN FARM INCOME FROM MAJOR CROPS, MAJOR CROP PRODUCTION AND MAJOR CROP PRICES

△ % (Y-O-Y)	2008	2008			2009			
		H1	Q3	Q4	Q1	Jan	Feb	Mar
Farm Income	38.4	57.2	36.5	27.2	-1.1	3.8	-2.1	-3.4
Production	6.2	9.2	4.1	4.2	-1.8	1.0	-0.8	-4.1
Price	30.3	44.0	31.1	22.1	0.7	2.7	-1.4	0.8

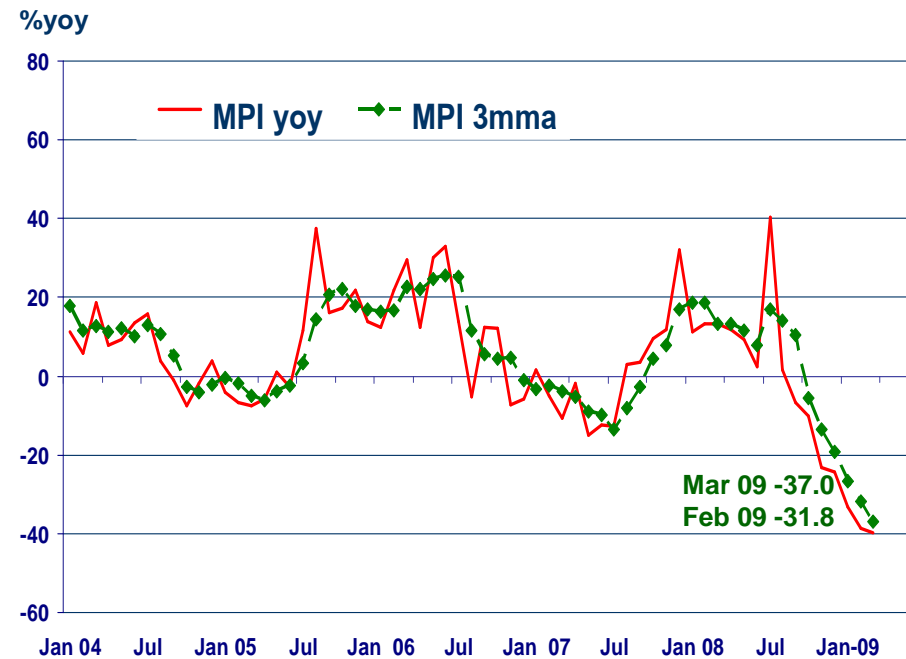
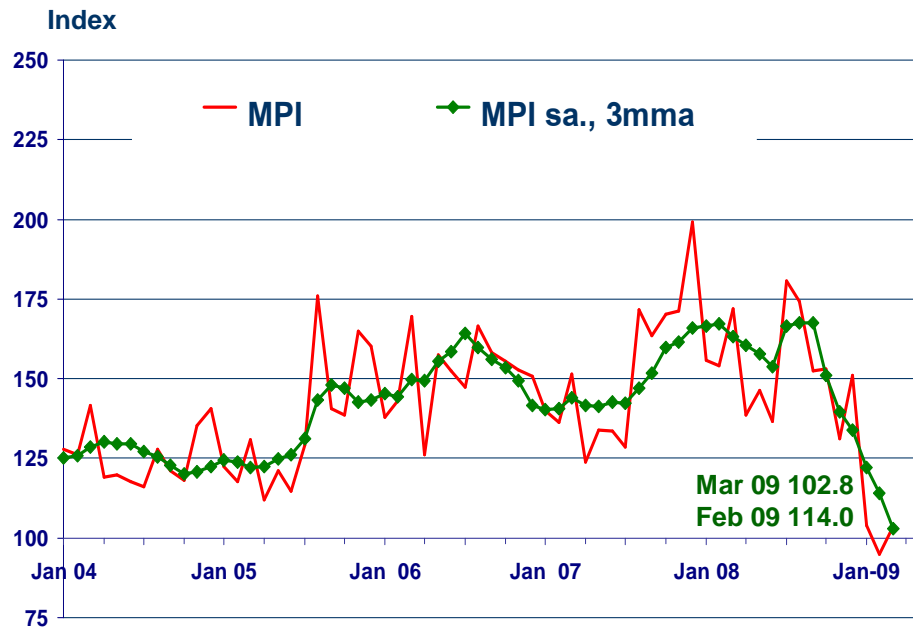
Source : Index constructed using data from Ministry of Agriculture and Co-operatives. (2002 =100)



MANUFACTURING

ส่วนเศรษฐกิจภาค สำนักงานภาคเหนือ

	2008	H1-08	Q3-08	Q4-08	Q1-09	Jan-09	Feb-09	Mar-09 ^P
MPI level	153.9	150.6	169.2	145.1	100.8	104.0	94.9	103.6
MPI %yoy	1.3%	10.3%	9.5%	-19.4%	-37.2%	-33.3%	-38.5%	-39.7%
MPI, level s.a.	-	-	-	-	n.a	111.4	100.1	96.8
% mom SA series	-	-	-	-	n.a	-14.8%	-10.2%	-3.2%



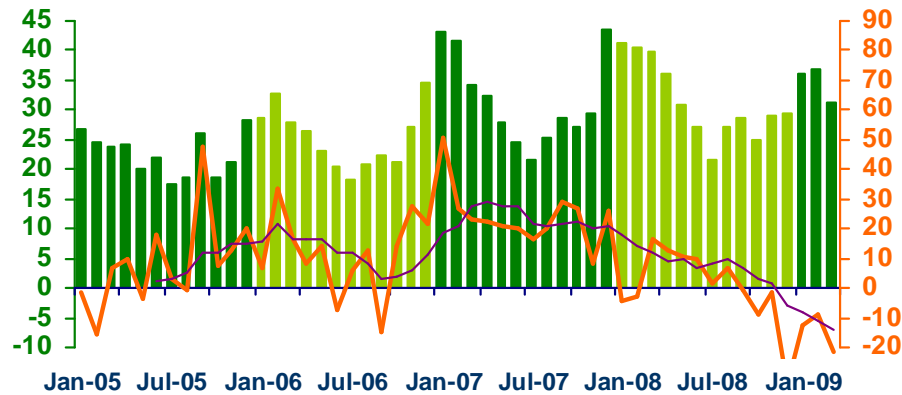


SERVICES

ส่วนเศรษฐกิจภาค สำนักงานภาคเหนือ

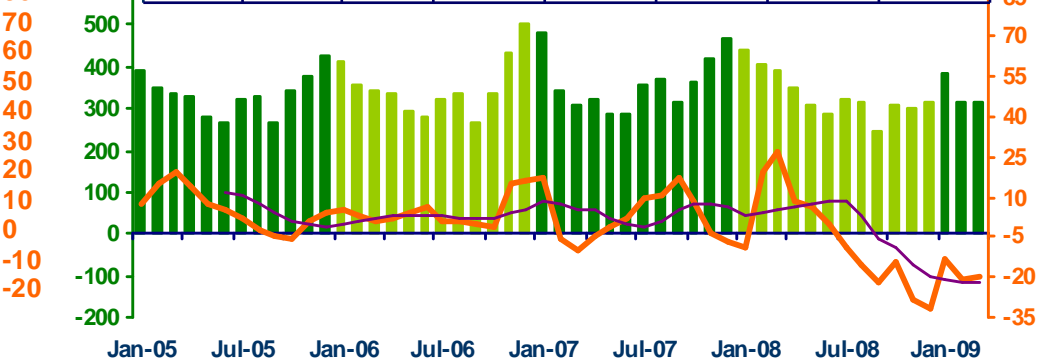
Hotel and restaurant VAT

	2008	H1-08	Q3-08	Q4-08	Q1-09	Jan-09	Feb-09	Mar-09	
Million Baht	376.2	215.5	77.5	83.0	104	35.9	36.9	31.3	
% Y-o-Y		(-0.8%)	(-5.7%)	(2.7%)	(-17.0%)	(-14.2%)	(-12.8%)	(-8.8%)	(-21.5%)



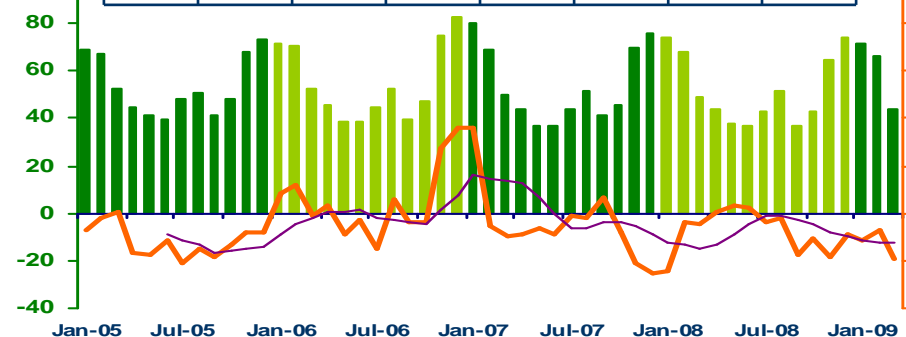
Air passengers

2008	2008			2009			% Y-o-Y
	H1	Q3	Q4	Q1	Jan	Feb	
3,985.0	2,174.5	883.9	926.6	1,014	382	317	315
(-7.7%)	(7.2%)	(-15%)	(-25.8%)	(-17.9%)	(-13.3%)	(-21.4%)	(-19.4%)



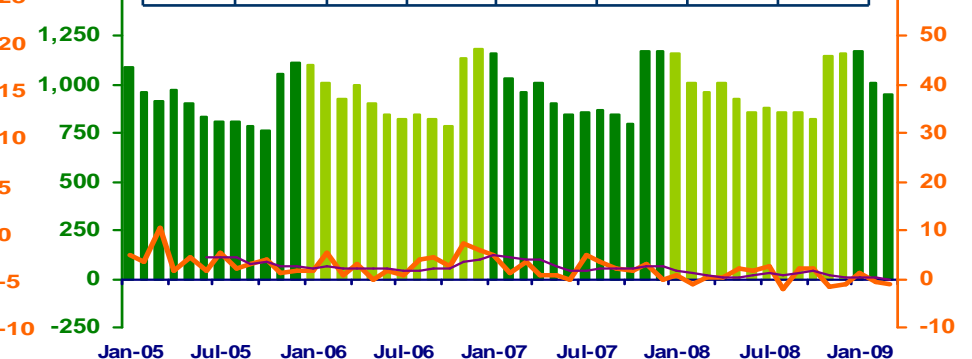
Hotel occupancy rate

	2008	H1-08	Q3-08	Q4-08	Q1-09	Jan-09	Feb-09	Mar-09	
%	51.9	51.6	43.9	60.5	60.6	71.4	66.4	44.0	
% Y-o-Y		(-1.8%)	(-1.1%)	(-1.9%)	(-3.1%)	(-3.1%)	(-2.8%)	(-1.7%)	(-4.8%)



Hotel average room rate

	2008	H1-08	Q3-08	Q4-08	Q1-09	Jan-09	Feb-09	Mar-09	
Baht/room	972.6	990.5	865.6	1,044.0	1,048.1	1,179.9	1,008.2	956.2	
% Y-o-Y		(0.3%)	(0.6%)	(0.8%)	(-0.5%)	(-0.17%)	(1.2%)	(-0.6%)	(-1.1%)

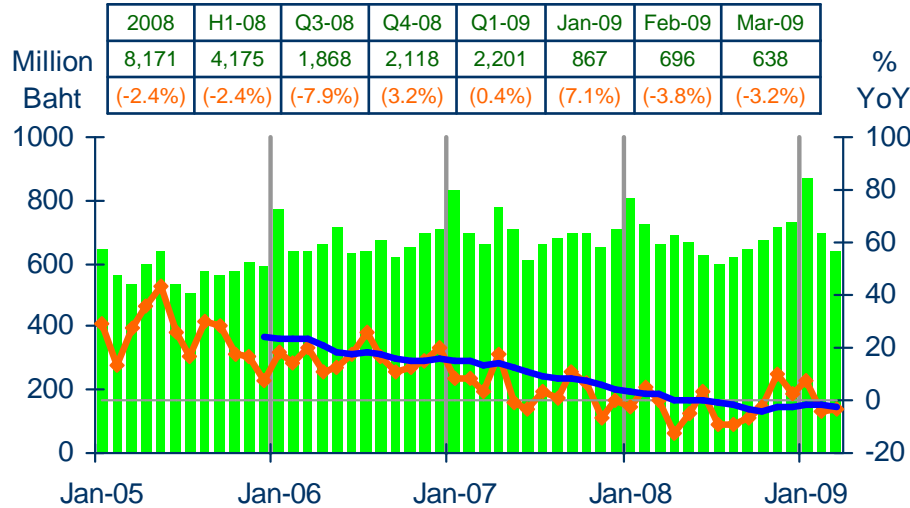




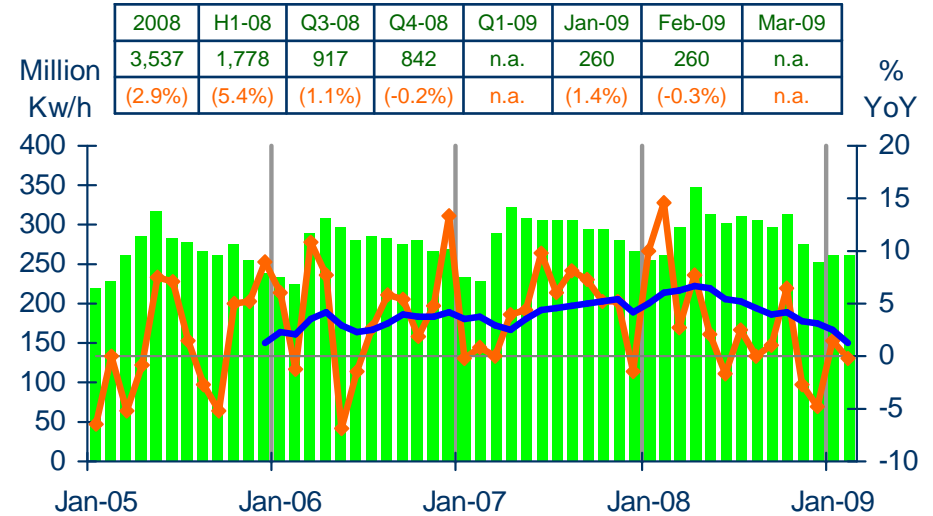
PRIVATE CONSUMPTION

ส่วนเศรษฐกิจภาค สำนักงานภาคเหนือ

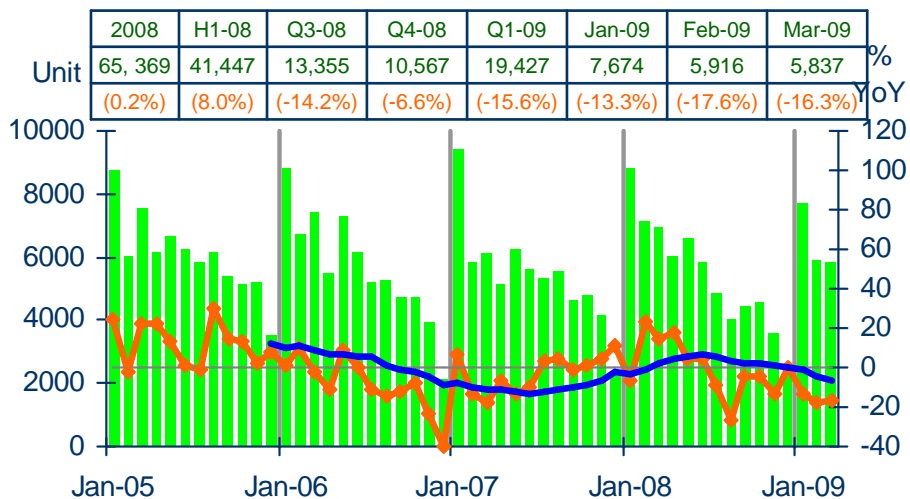
VAT (real term)



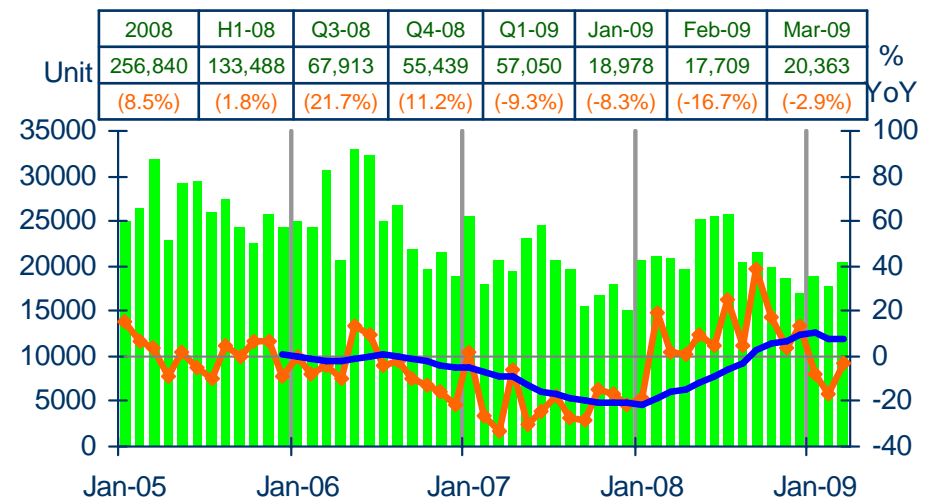
Household electrical consumption



Registered passenger and commercial cars



Registered motorcycles

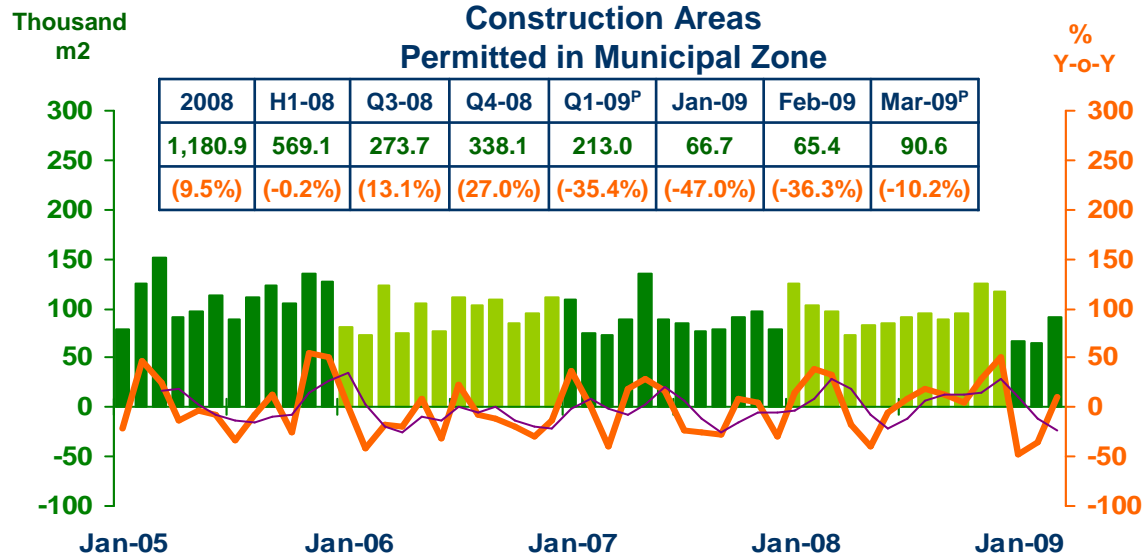


Sources: Ministry of Finance, Provincial Electricity Authority, Provincial Land Transportation Offices

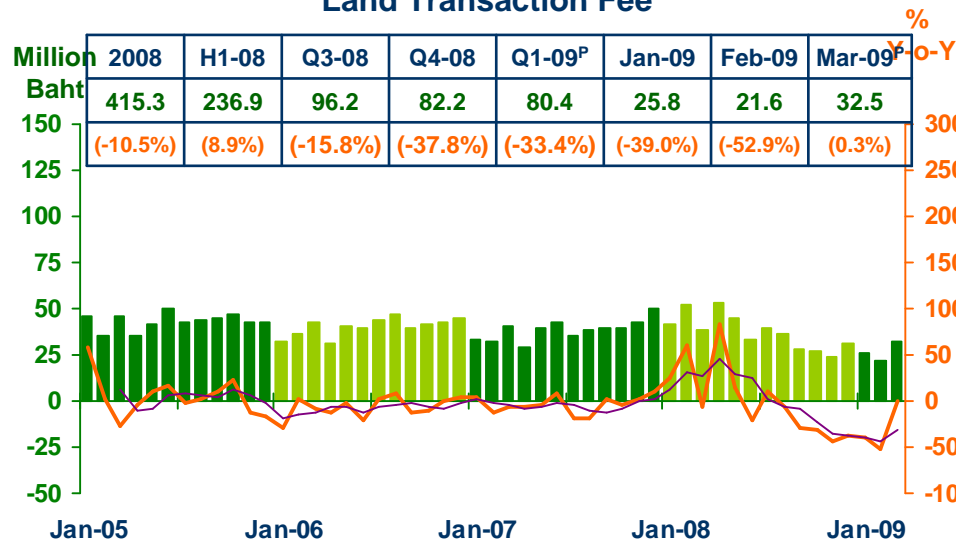


Private Investment

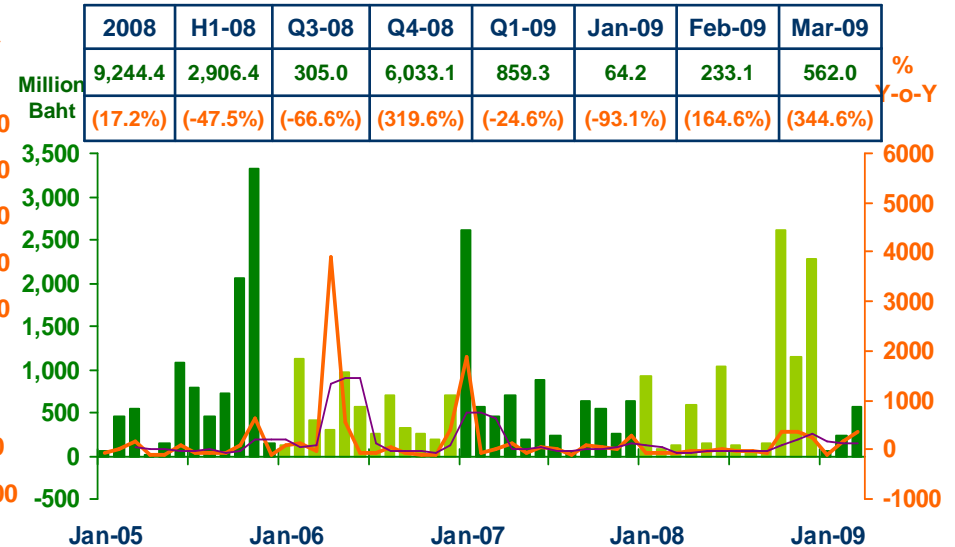
ส่วนเศรษฐกิจภาค สำนักงานภาคเหนือ



Land Transaction Fee



Investment Value of Projects Approved by BOI



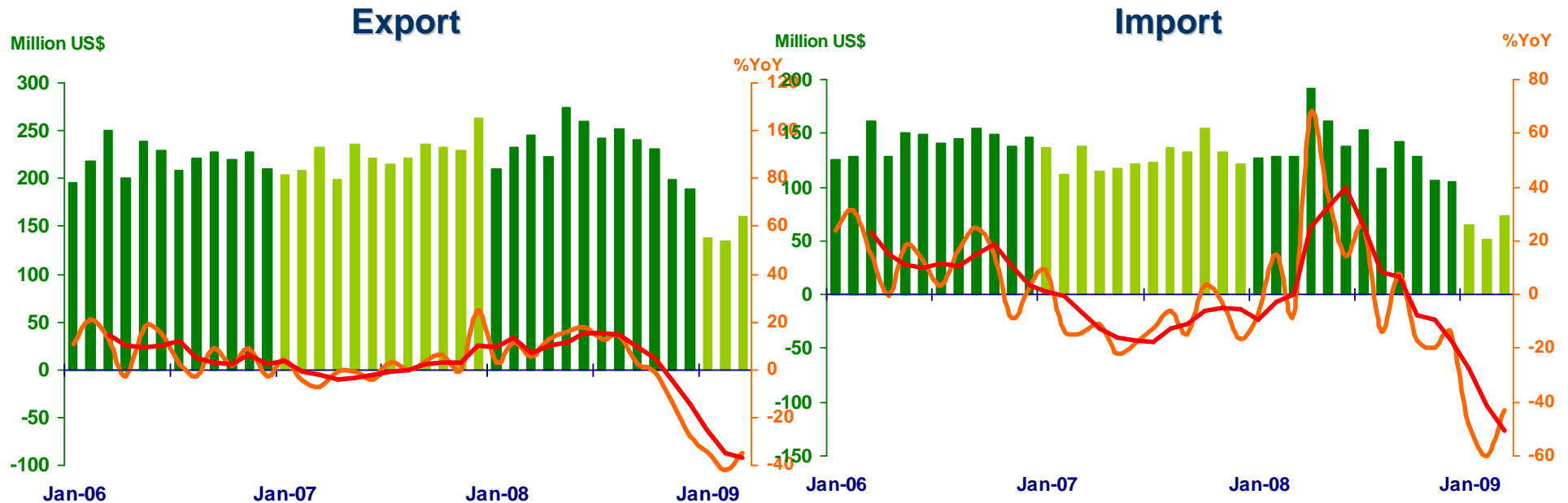
Sources: Cement Thai Plc. and Jalapathan Cement Plc.; Municipality Offices; Provincial Land Offices; Customs Department ; Northern Region Investment and Economic Center (BOI)



Foreign Trade

ส่วนเศรษฐกิจภาค สำนักงานภาคเหนือ

	2008	2008			2009			
		H1	Q3	Q4	Q1	Jan	Feb	Mar
EXPORTS	2,798.9	1,446.0	734.9	618.0	432.3	138.2	134.3	159.7
	(3.7%)	(11.1%)	(9.4%)	(-14.7%)	(-37.2%)	(-34.3%)	(-42.0%)	(-35.0%)
IMPORTS	1,627.9	875.2	413.1	339.6	189.6	65.5	51.3	72.8
	(5.7%)	(18.3%)	(5.8%)	(-17.1%)	(-50.6%)	(-48.6%)	(-60.0%)	(-43.1%)
Trade Balance	1,171.0	570.8	321.8	278.4	242.7	72.7	83.0	86.9



Sources: Customs Department

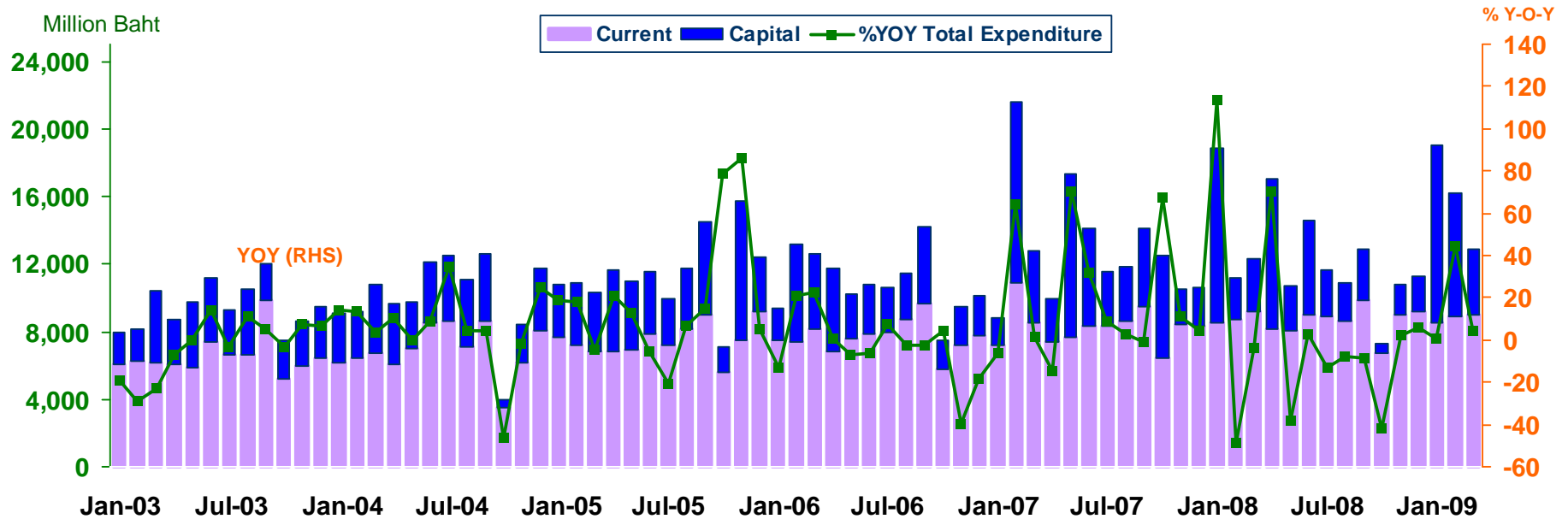


การเบิกจ่ายเงินงบประมาณผ่านคลังจังหวัดในภาคเหนือ

ส่วนเศรษฐกิจภาค สำนักงานภาคเหนือ

Actual Expenditures

Expenditure	2008	2008			2009			
		H2	Q3	Q4	Q1	Jan	Feb	Mar
Current	103,852.4	52,226.4	27,330.0	24,896.4	26,387.3	8,529.6	8,895.2	8,962.5
	(4.2)	(5.2)	(3.5)	(7.2)	(-0.3)	(-0.1)	(1.7)	(-2.3)
Capital	45,555.7	12,504.8	8,071.5	4,433.3	21,690.3	10,504.6	7,264.1	3,921.6
	(-18.9)	(-41.8)	(-27.1)	(-57.4)	(36.4)	(1.7)	(199.2)	(24.7)
Total	149,408.0	64,731.3	35,401.5	29,329.8	48,077.6	19,034.2	16,159.3	12,884.1
	(-4.1)	(-9.0)	(-5.6)	(-12.8)	(13.5)	(0.9)	(44.6)	(4.5)



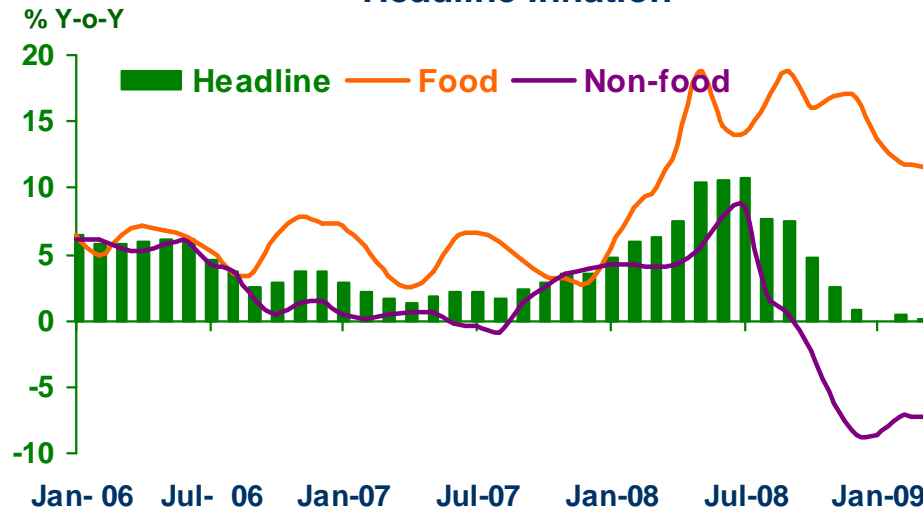
Source: Ministry of Finance



Price Level

ส่วนเศรษฐกิจภาค สำนักงานภาคเหนือ

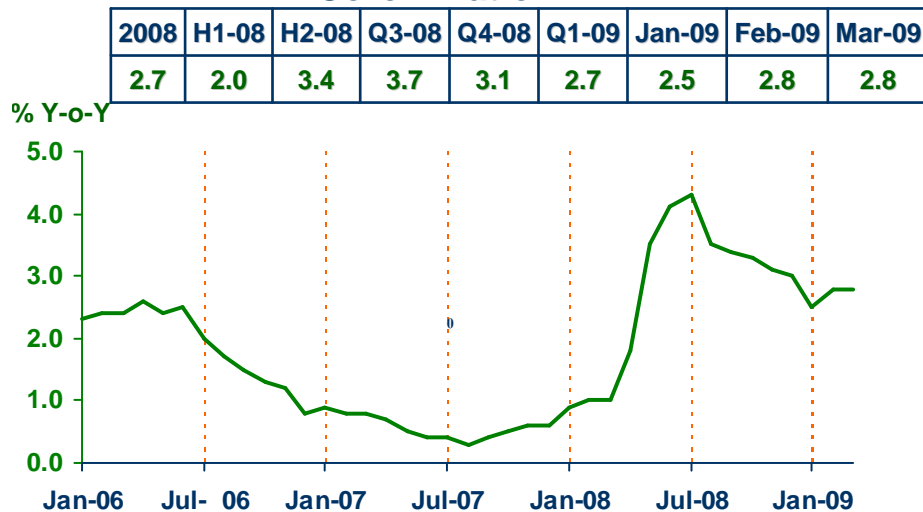
Headline Inflation



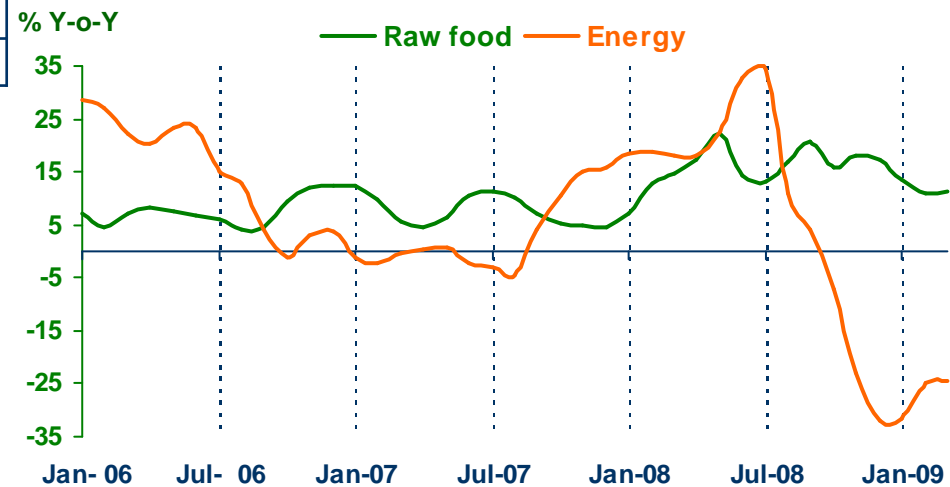
Headline inflation (2007 = 100)

	2008	2008			2009			
		H1	Q3	Q4	Q1	Jan	Feb	Mar
Headline	6.0	8.3	8.7	2.8	0.2	0.0	0.4	0.2
Food	14.2	11.8	16.4	16.7	12.4	13.7	11.9	11.6
Non-food	2.0	5.0	3.8	-5.8	-7.7	-8.6	-7.2	-7.3

Core Inflation



Rawfood and Energy



Sources: Bureau of Trade and Economic Indices, Ministry of Commerce
 Note: Northern region's Core CPI data has been released since January 2002

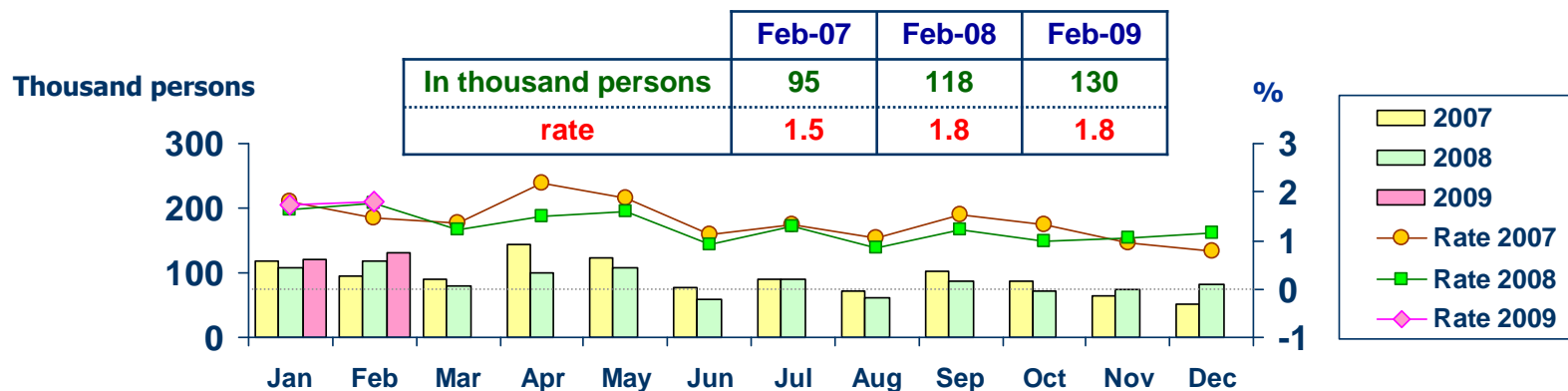


Labor Force Survey

ส่วนเศรษฐกิจภาค สำนักงานภาคเหนือ

	% of Total Labor Force (as of Feb 2009)	2008 (Δ%)	Q1-08 (Δ%)	Q2-08 (Δ%)	Q3-08 (Δ%)	Q4-08 (Δ%)	Jan-09 (Δ%)	Feb-09 (Δ%)
Labor Force (1,000 Persons)	100.0	7,181	6,629	6,642	7,134	7,181	6,984	7,033
Employed persons	97.9	6.6	1.4	-1.1	6.3	6.6	6.2	8.1
• Agriculture	42.4	-0.8	-0.1	-9.5	1.9	-0.8	3.3	6.3
• Non-agriculture	55.5	16.2	2.7	7.5	10.6	16.2	8.6	9.5
- Wholesale & retail trade	13.2	35.3	0.1	12.4	11.6	35.3	-0.6	0.3
- Manufacturing	12.2	8.8	-3.7	-15.7	-10.8	8.8	3.0	13.3
- Construction	8.6	26.2	2.2	-4.6	19.2	26.2	21.2	32.7
- Hotel & restaurants Services	5.9	0.9	-3.0	14.6	12.4	0.9	17.0	8.2
- Others	15.6	7.2	12.6	24.7	21.0	7.2	13.5	5.2
Unemployed persons	1.8	57.8	-10.3	-21.0	-15.9	57.8	11.6	11.0
Seasonally inactive persons	0.3	-40.3	43.5	-83.0	-2.4	-40.3	-24.0	-78.4

Unemployment



Source : National Statistical Office



DEPOSITS AND CREDITS OF COMMERCIAL BANKS

ส่วนเศรษฐกิจภาค สำนักงานภาคเหนือ

