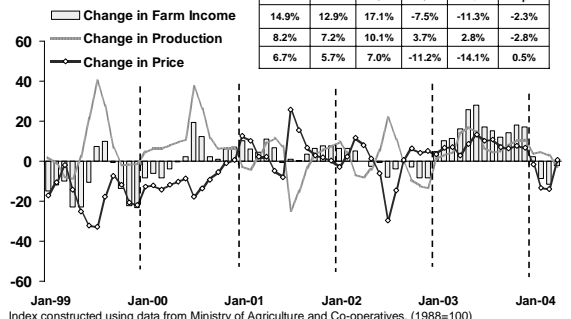


## แถลงข่าวเศรษฐกิจการเงินภาคเหนือ เดือนเมษายน 2547

ธนาคารแห่งประเทศไทย สำนักงานภาคเหนือ

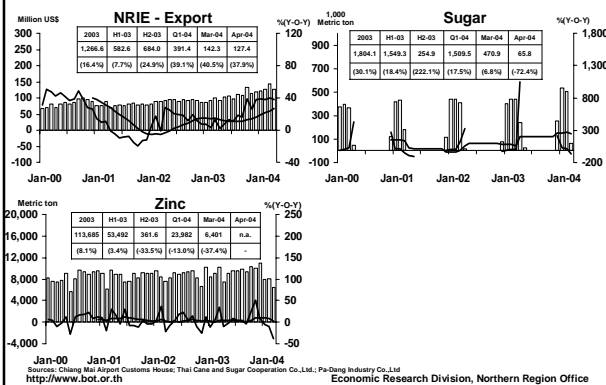
## CHANGE IN AGRICULTURAL PRODUCTION (major crops)

weight 16% of Northern GRP



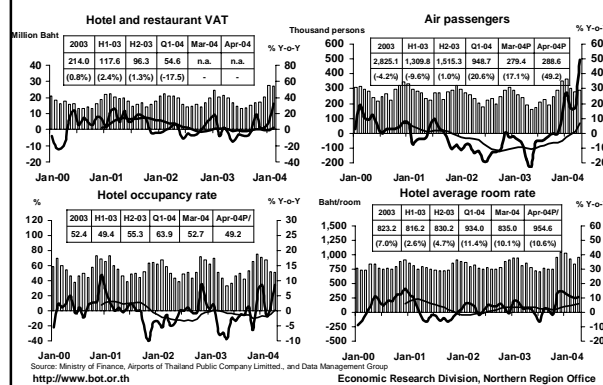
Index constructed using data from Ministry of Agriculture and Co-operatives, (1988=100)  
http://www.bot.or.th Economic Research Division, Northern Region Office

## MANUFACTURING



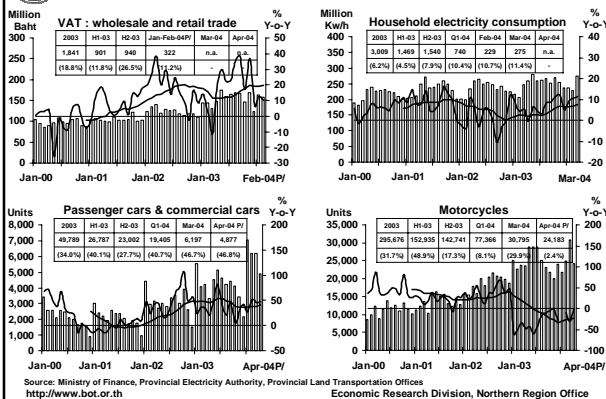
Sources: Chiang Mai Airport Customs House, Thai Cane and Sugar Cooperation Co., Ltd., Pii-Dang Industry Co., Ltd.  
http://www.bot.or.th Economic Research Division, Northern Region Office

## SERVICES (weight 19% of Northern GRP)



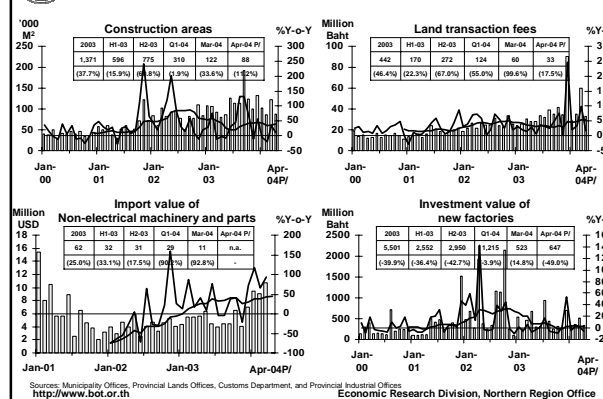
Sources: Ministry of Finance, Airports of Thailand Public Company Limited., and Data Management Group  
http://www.bot.or.th Economic Research Division, Northern Region Office

## PRIVATE CONSUMPTION INDICATORS



Sources: Ministry of Finance, Provincial Electricity Authority, Provincial Land Transportation Offices  
http://www.bot.or.th Economic Research Division, Northern Region Office

## PRIVATE INVESTMENT



Sources: Municipality Offices, Provincial Lands Offices, Customs Department, and Provincial Industrial Offices  
http://www.bot.or.th Economic Research Division, Northern Region Office

