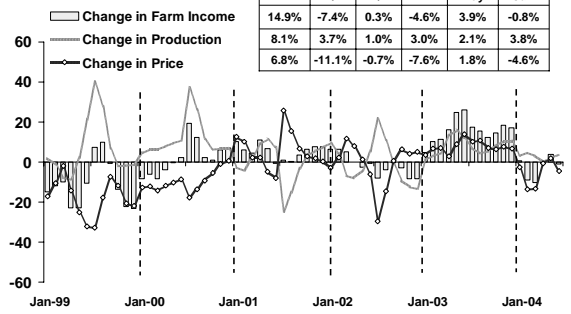


แถลงข่าวเศรษฐกิจการเงินภาคเหนือ
เดือนมิถุนายน 2547 และครึ่งแรกปี 2547

ธนาคารแห่งประเทศไทย สำนักงานภาคเหนือ

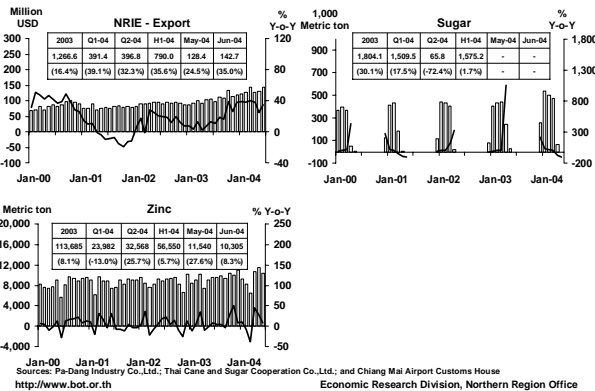
CHANGE IN AGRICULTURAL PRODUCTION (major crop)

weight 17 % of Northern GRP



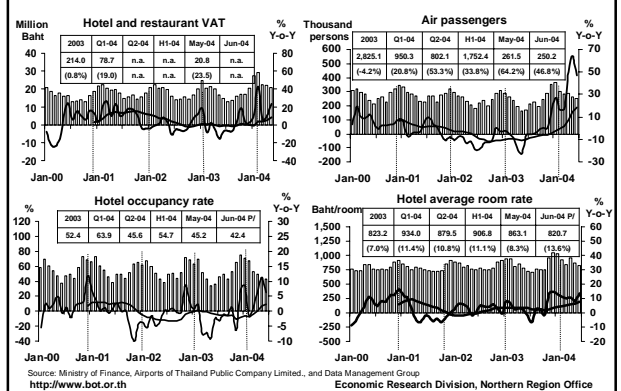
Index constructed using data from Ministry of Agriculture and Co-operatives. (1989=100)
http://www.bot.or.th Economic Research Division, Northern Region Office

MANUFACTURING



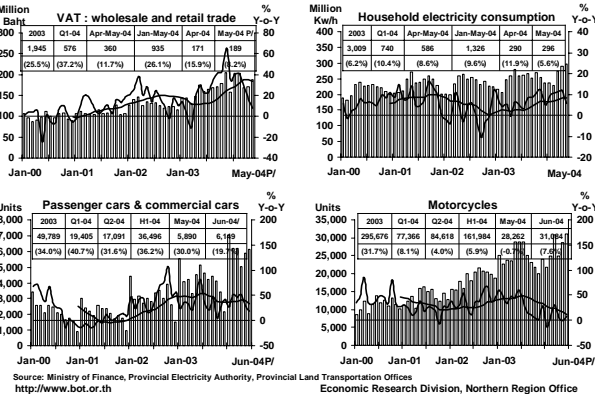
Sources: Pa-Dang Industry Co., Ltd.; Thai Cane and Sugar Cooperation Co., Ltd.; and Chiang Mai Airport Customs House
http://www.bot.or.th Economic Research Division, Northern Region Office

SERVICES (weight 14 % of Northern GRP)



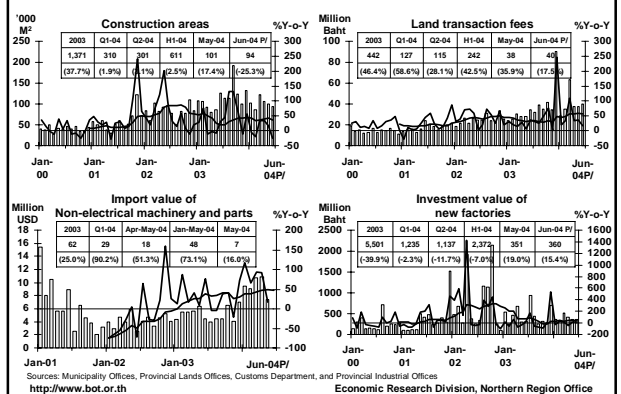
Sources: Ministry of Finance, Airports of Thailand Public Company Limited., and Data Management Group
http://www.bot.or.th Economic Research Division, Northern Region Office

PRIVATE CONSUMPTION



Sources: Ministry of Finance, Provincial Electricity Authority, Provincial Land Transportation Offices
http://www.bot.or.th Economic Research Division, Northern Region Office

PRIVATE INVESTMENT



Sources: Municipality Offices, Provincial Lands Offices, Customs Department, and Provincial Industrial Offices
http://www.bot.or.th Economic Research Division, Northern Region Office

