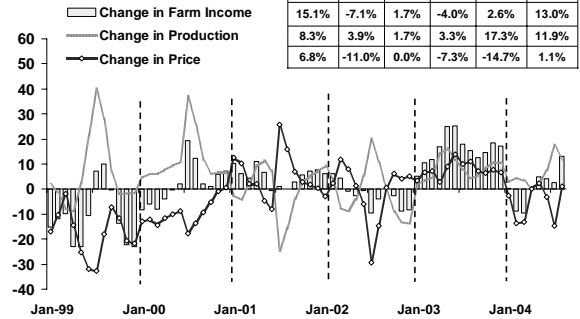


แถลงข่าวเศรษฐกิจการเงินภาคเหนือ เดือนสิงหาคม 2547

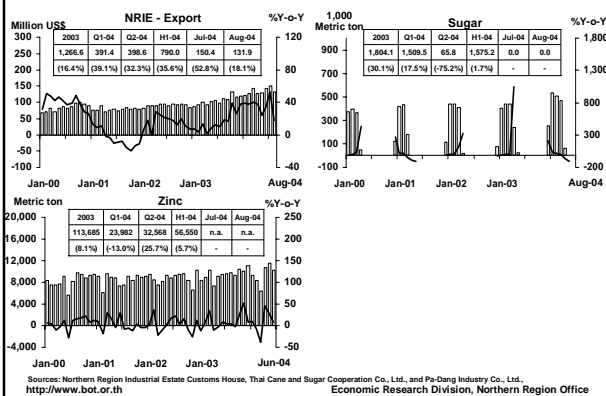
ธนาคารแห่งประเทศไทย สำนักงานภาคเหนือ

CHANGE IN AGRICULTURAL PRODUCTION (major crops)



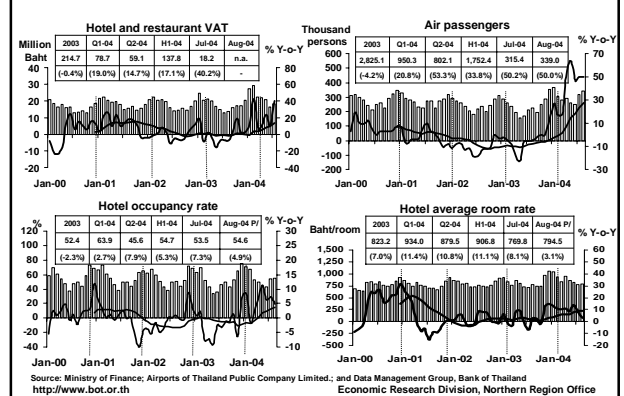
Index constructed using data from Ministry of Agriculture and Co-operatives. (1988=100)
http://www.bot.or.th Economic Research Division, Northern Region Office

MANUFACTURING



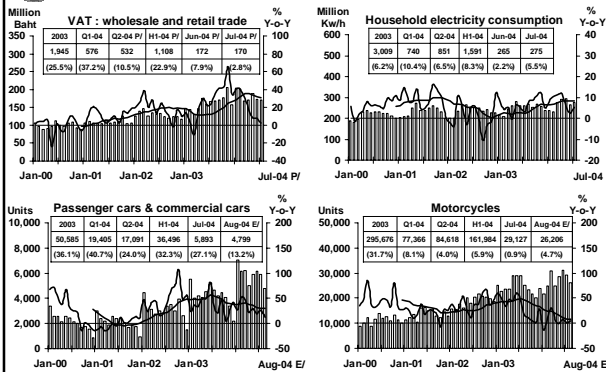
Sources: Northern Region Industrial Estate Customs House, Thai Cane and Sugar Cooperation Co., Ltd., and Pa-Dang Industry Co., Ltd.
http://www.bot.or.th Economic Research Division, Northern Region Office

SERVICES



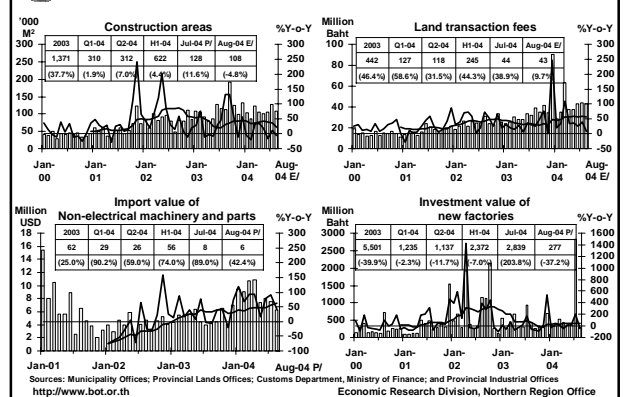
Sources: Ministry of Finance; Airports of Thailand Public Company Limited; and Data Management Group, Bank of Thailand
http://www.bot.or.th Economic Research Division, Northern Region Office

PRIVATE CONSUMPTION



Sources: Ministry of Finance, Provincial Electricity Authority, and Provincial Land Transportation Offices
http://www.bot.or.th Economic Research Division, Northern Region Office

PRIVATE INVESTMENT



Sources: Municipality Offices; Provincial Lands Offices; Customs Department, Ministry of Finance; and Provincial Industrial Offices
http://www.bot.or.th Economic Research Division, Northern Region Office

