

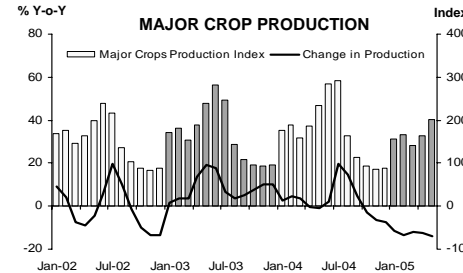
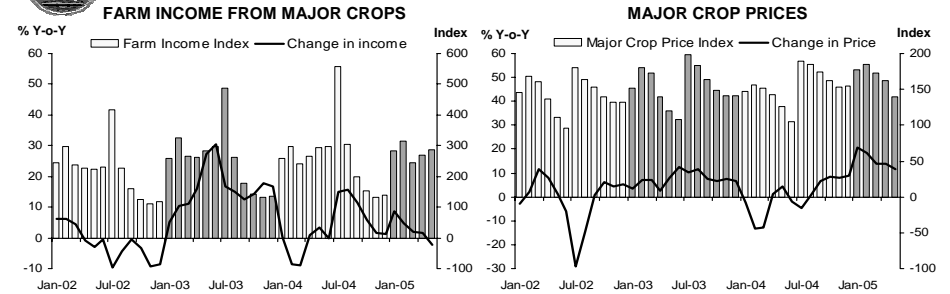


แถลงข่าวเศรษฐกิจและการเงินภาคเหนือ เดือนพฤษภาคม 2548

ธนาคารแห่งประเทศไทย สำนักงานภาคเหนือ



FARM INCOME FROM MAJOR CROPS



CHANGE IN FARMCOME FROM MAJOR CROPS, MAJOR CROP PRODUCTION AND MAJOR CROP PRICES

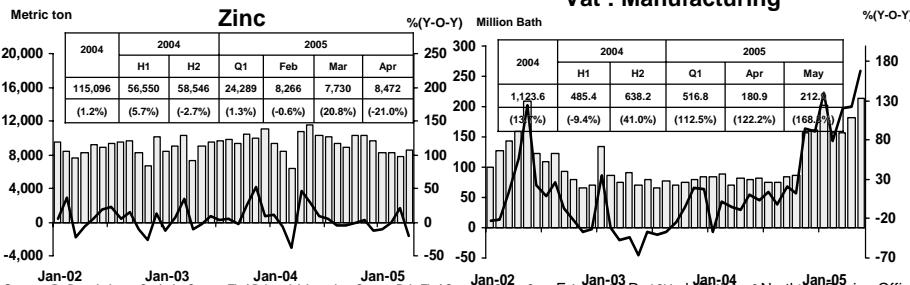
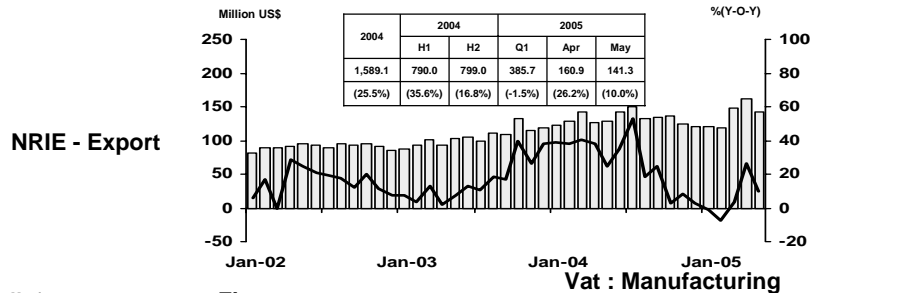
△% (Y-O-Y)	2004	2004		2005		
		H1	Q4	Q1	Apr	May
Farm Income	1.7%	-3.9%	2.2%	4.5%	1.5%	-2.3%
Production	-1.3%	2.6%	-6.3%	-12.2%	-12.5%	-13.9%
Price	3.0%	-6.5%	8.5%	16.7%	14.0%	11.6%

Source : Index constructed using data from Ministry of Agriculture and Co-operatives. (1988 =100)

Economic Research Division, Northern Region Office



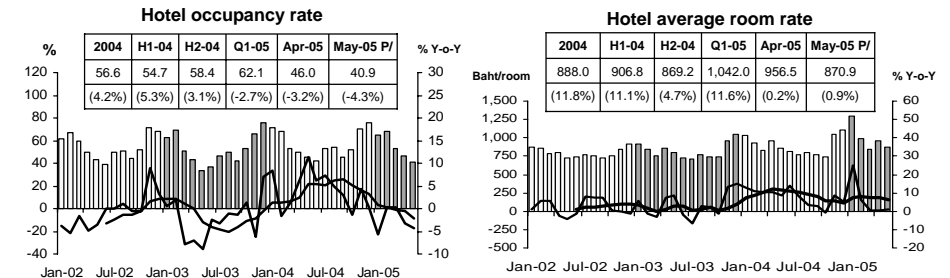
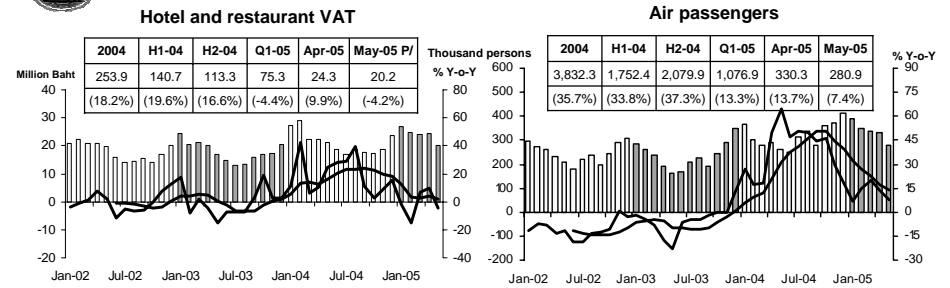
MANUFACTURING



Sources: Pa-Dang Industry Co.,Ltd.; Cement Thai Pci. and Jalapraphan Cement Pci.; Thai Cane and Sugar Co-op. Economic Research Division, Northern Region Office



SERVICES

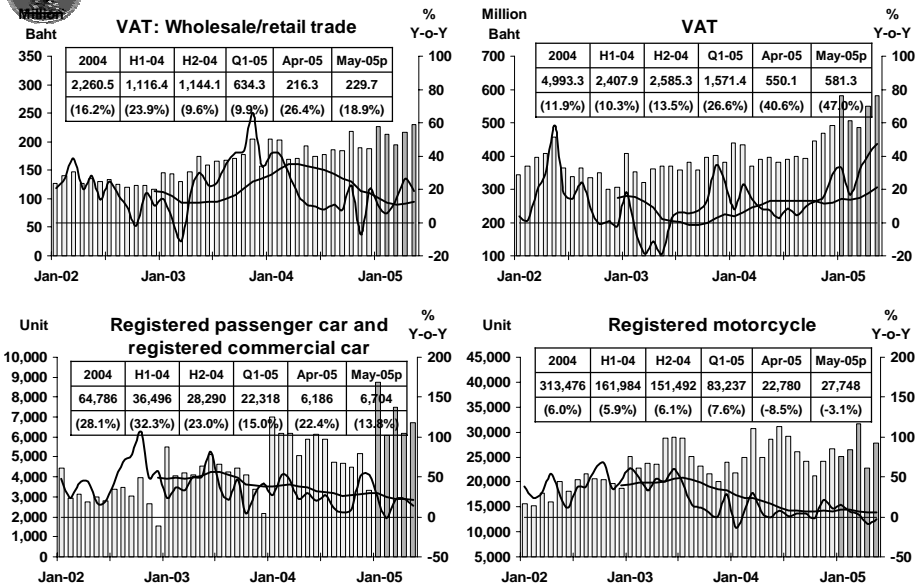


Source: Ministry of Finance, Airports of Thailand Public Company Limited., and Data Management Group

Economic Research Division, Northern Region Office



PRIVATE CONSUMPTION

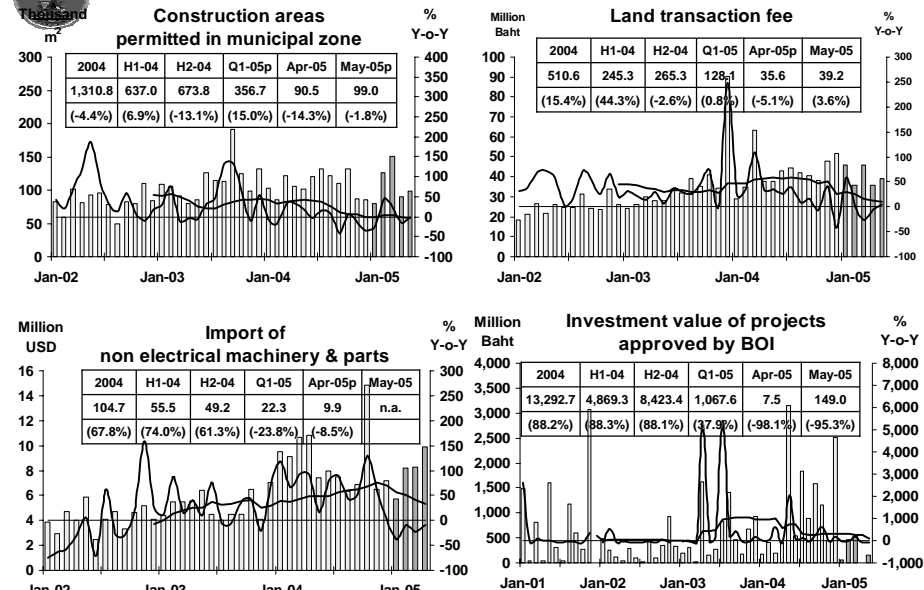


Sources: Ministry of Finance, Provincial Land Transportation Offices

Economic Research Division, Northern Region Office



PRIVATE INVESTMENT

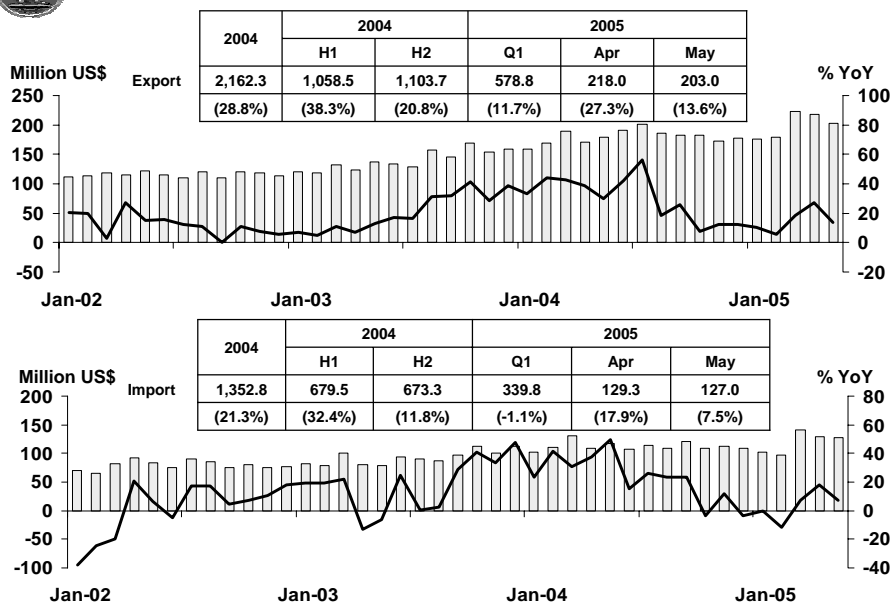


Sources: Municipality Offices; Provincial Land Offices; Customs Department; Northern Region Investment and Economic Center (BOI)

Economic Research Division, Northern Region Office



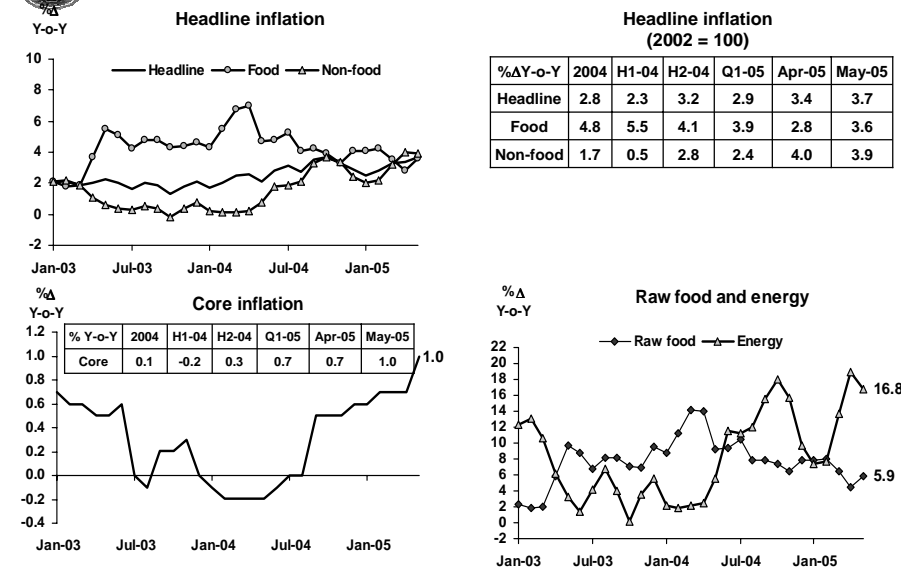
FOREIGN TRADE



Economic Research Division, Northern Region Office



PRICE LEVEL



Sources: Bureau of Trade and Economic Indices, Ministry of Commerce, Note: Northern region's Core CPI data has been released since January 2002

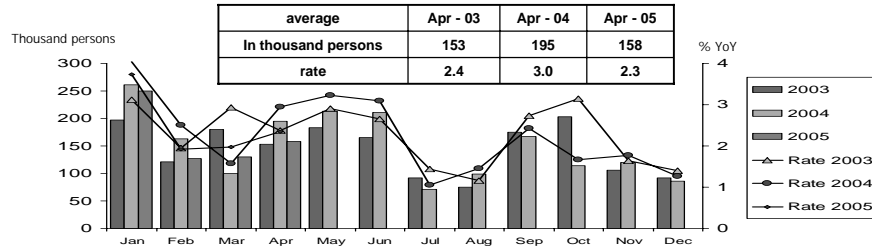
Economic Research Division, Northern Region Office



Labor Force Survey

	% of Total Labour Force (as of Apr 2005)	2003 (Δ %)	2004 (Δ %)	H1-04 (Δ %)	H2-04 (Δ %)	Mar-05 (Δ %)	Apr-05 (Δ %)
Labour Force (1,000 Persons)	100.0	6,563	6,787	6,849	6,787	6,629	6,723
Employed persons	96.0	3.0	3.6	10.2	3.6	3.9	2.0
• Agriculture	40.6	-3.8	-3.8	11.7	-3.8	2.7	5.0
• Non-agriculture	55.4	13.3	13.0	8.6	13.0	4.8	0.0
- Wholesale & retail trade	15.5	-0.7	26.2	27.3	26.2	4.6	3.8
- Manufacturing	11.4	22.5	16.6	32.5	16.6	20.1	-1.0
- Construction	7.9	25.3	4.5	-20.2	4.5	-15.1	-16.4
- Hotel & restaurants Services	5.8	15.9	-2.5	-27.7	-2.5	10.7	-4.3
- Others	14.7	15.5	8.8	0.9	8.8	5.1	10.0
Unemployed persons	2.3	-7.2	-6.5	28.2	-6.5	30.9	-18.9
Seasonally inactive persons	1.6	180.6	-4.0	-72.0	-4.0	16.2	57.4

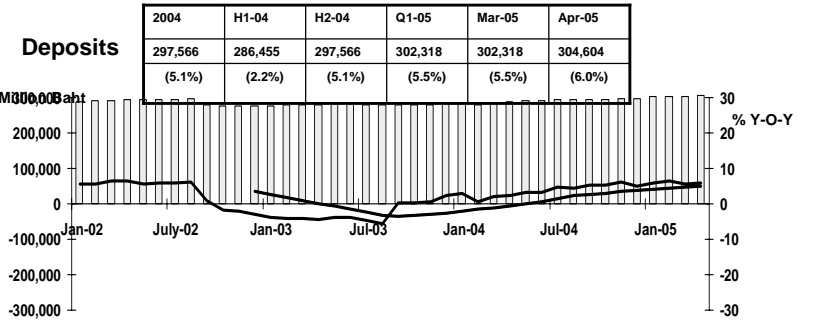
Unemployment



Economic Research Division, Northern Region Office



DEPOSITS AND CREDITS OF COMMERCIAL BANKS



Credits

