



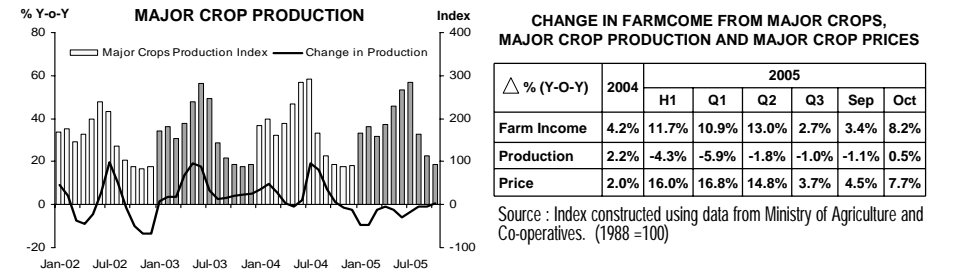
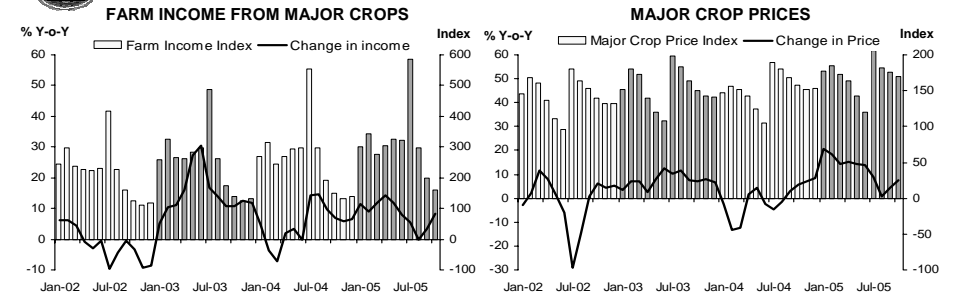
สรุปภาวะเศรษฐกิจการเงินภาคเหนือ เดือนตุลาคม 2548

ธนาคารแห่งประเทศไทย สำนักงานภาคเหนือ

Economic Research Division, Northern Region Office



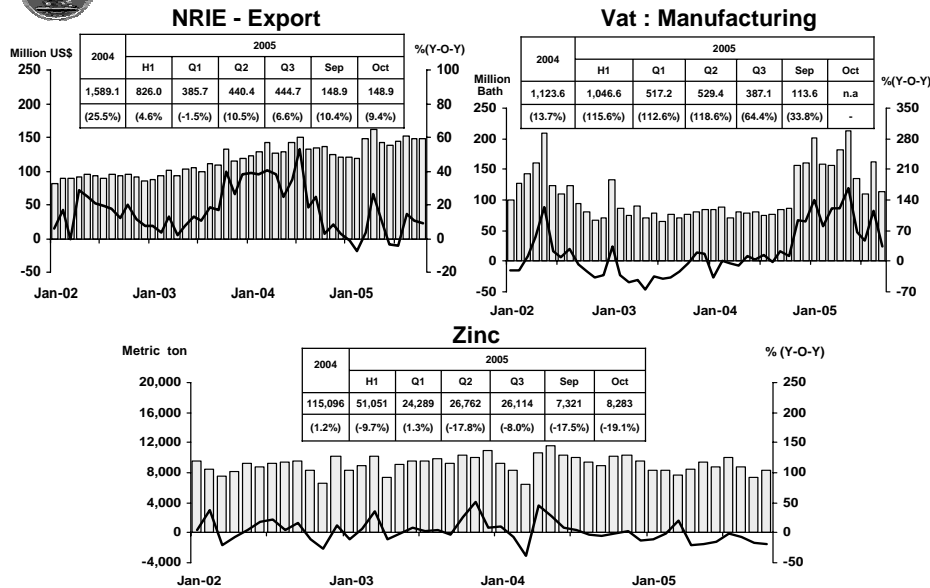
FARM INCOME FROM MAJOR CROPS



Economic Research Division, Northern Region Office



MANUFACTURING

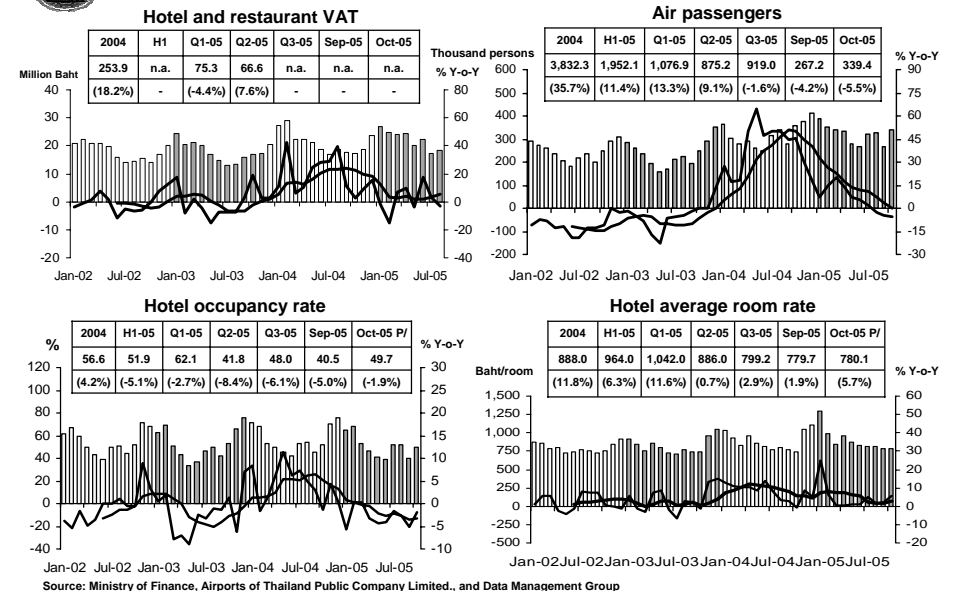


Sources: Pa-Dang Industry Co.,Ltd.; Thai Cane and Sugar Cooperation Co.,Ltd.; and Chiang Mai Airport Customs House

Economic Research Division, Northern Region Office



SERVICES



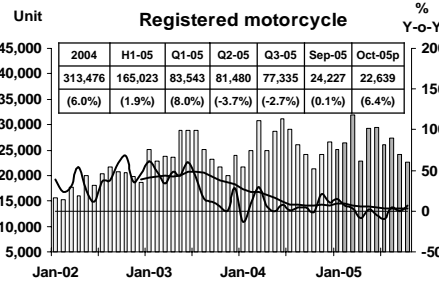
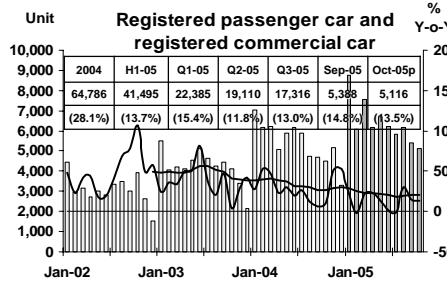
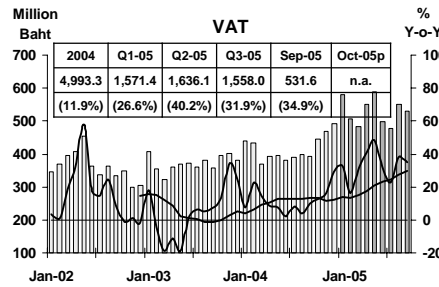
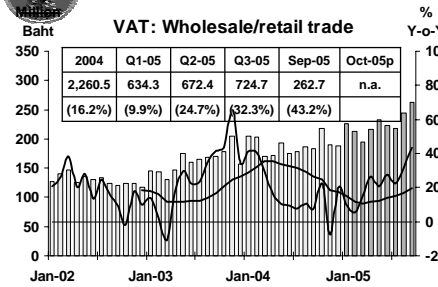
Source: Ministry of Finance, Airports of Thailand Public Company Limited., and Data Management Group

Economic Research Division, Northern Region Office



PRIVATE CONSUMPTION

5



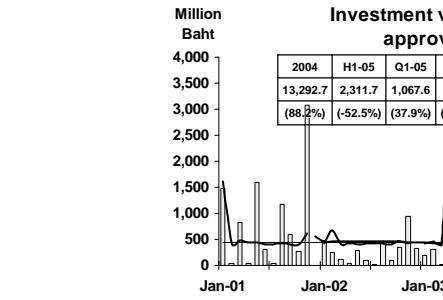
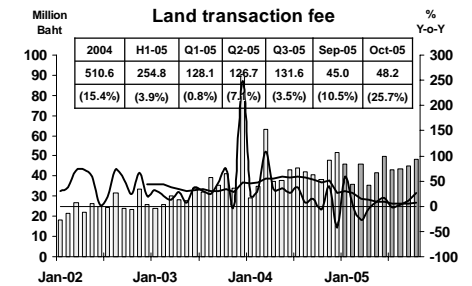
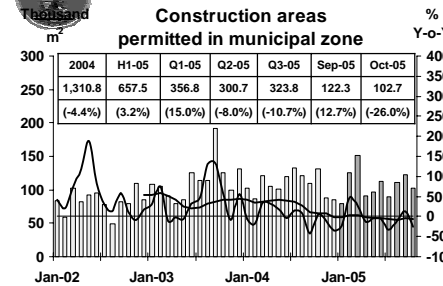
Sources: Ministry of Finance, Provincial Land Transportation Offices

Economic Research Division, Northern Region Office



PRIVATE INVESTMENT

6



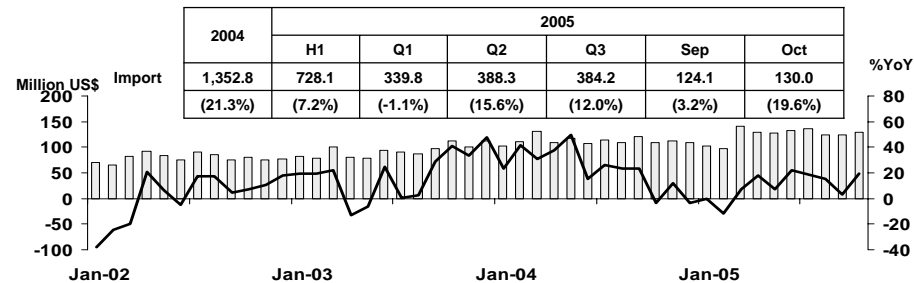
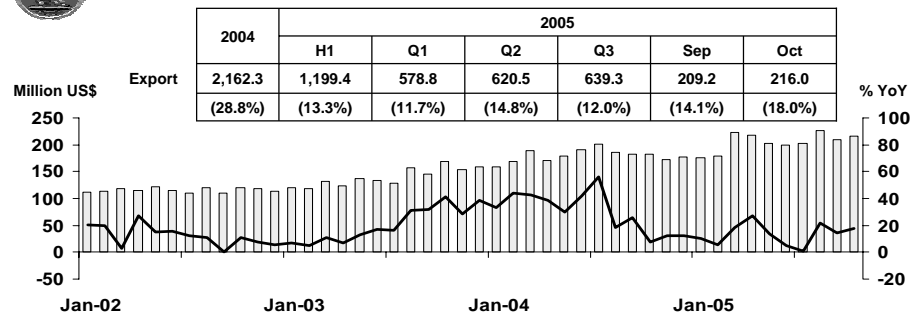
Sources: Municipality Offices; Provincial Land Offices; Customs Department; Northern Region Investment and Economic Center (BOI)

Economic Research Division, Northern Region Office



FOREIGN TRADE

7

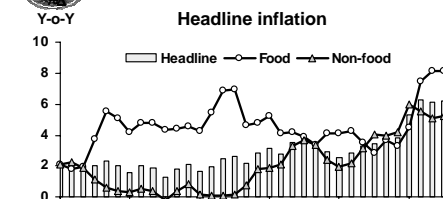


Economic Research Division, Northern Region Office



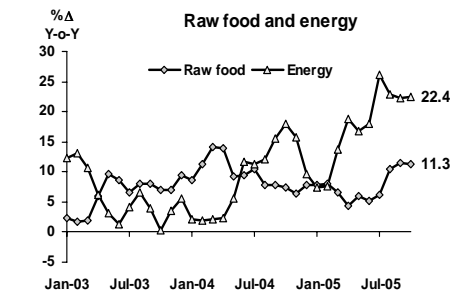
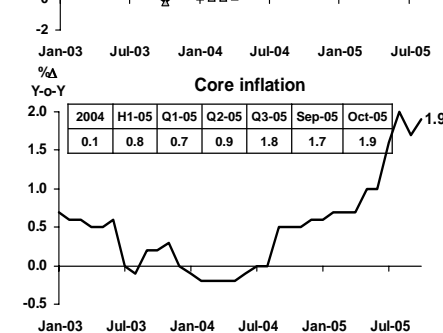
PRICE LEVEL

8



Headline inflation (2002 = 100)

%ΔY-o-Y	2004	H1-05	Q1-05	Q2-05	Q3-05	Sep-05	Oct-05
Headline	2.8	3.3	2.9	3.7	5.9	6.1	6.2
Food	4.8	3.6	3.9	3.2	6.7	8.1	8.1
Non-food	1.7	3.3	2.4	4.1	5.5	5.1	5.2



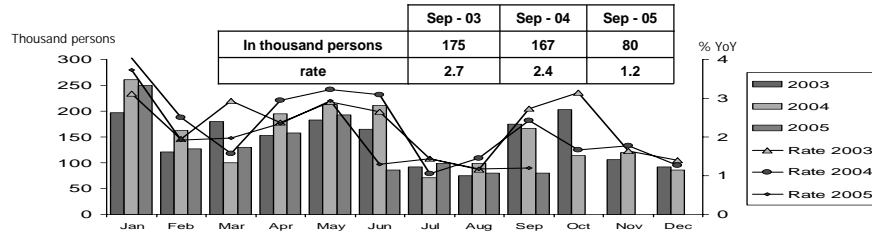
Sources: Bureau of Trade and Economic Indices, Ministry of Commerce
Note: Northern region's Core CPI data has been released since January 2002

Economic Research Division, Northern Region Office

Labor Force Survey

	% of Total Labour Force (as of Sep 2005)	2004 (Δ %)	Q1-05 (Δ %)	Q2-05 (Δ %)	Aug-05 (Δ %)	Sep-05 (Δ %)
Labour Force (1,000 Persons)	100.0	6,787	6,629	6,638	6,761	6,660
Employed persons	98.6	3.6	3.9	-1.6	-1.3	-2.3
• Agriculture	50.9	-3.8	2.7	-6.9	-1.6	-0.2
• Non-agriculture	47.7	13.0	4.8	4.1	-0.8	-4.4
- Wholesale & retail trade	13.0	26.2	4.6	-7.5	-2.3	-5.6
- Manufacturing	10.5	16.6	20.1	-14.7	0.4	-15.3
- Construction	6.2	4.5	-15.1	34.1	2.9	-9.3
- Hotel & restaurants Services	5.6	-2.5	10.7	83.4	-6.9	28.5
- Others	12.4	8.8	5.1	4.2	0.8	-1.1
Unemployed persons	1.2	-6.5	30.9	-59.3	-19.8	-52.1
Seasonally inactive persons	0.2	-4.0	16.2	156.9	655.4	91.7

Unemployment

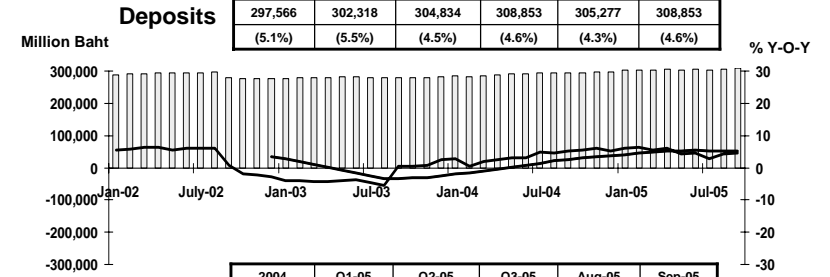


Source: National Statistical Office

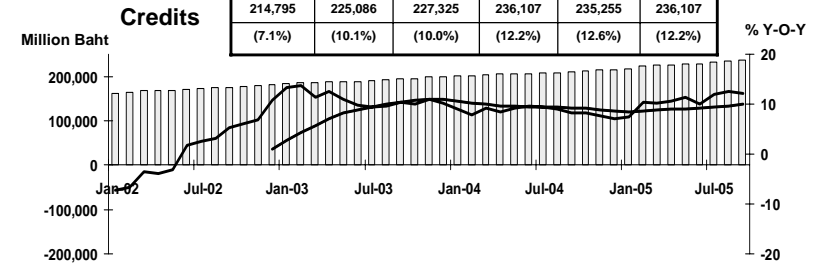
Economic Research Division, Northern Region Office

DEPOSITS AND CREDITS OF COMMERCIAL BANKS

2004	Q1-05	Q2-05	Q3-05	Aug-05	Sep-05
297,566	302,318	304,834	308,853	305,277	308,853
(5.1%)	(5.5%)	(4.5%)	(4.6%)	(4.3%)	(4.6%)



2004	Q1-05	Q2-05	Q3-05	Aug-05	Sep-05
214,795	225,086	227,325	236,107	235,255	236,107
(7.1%)	(10.1%)	(10.0%)	(12.2%)	(12.6%)	(12.2%)



Economic Research Division, Northern Region Office