

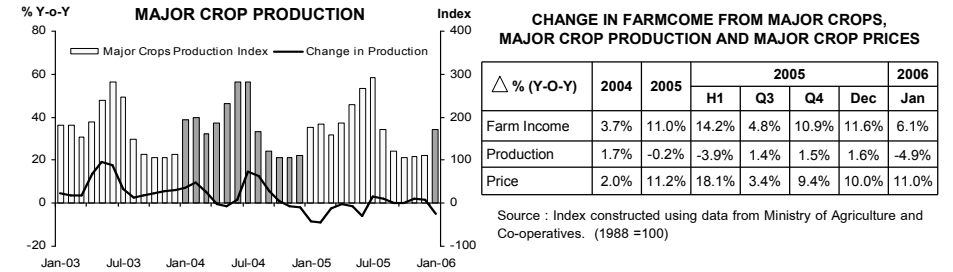
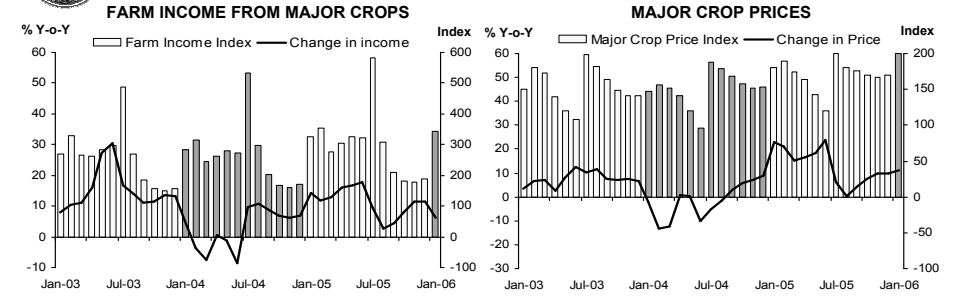


แถลงข่าวเศรษฐกิจการเงินภาคเหนือ เดือนมกราคม 2549

Economic Research Division, Northern Region Office



FARM INCOME FROM MAJOR CROPS

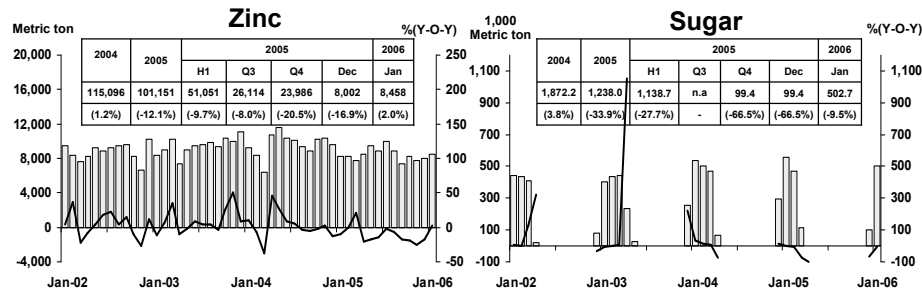
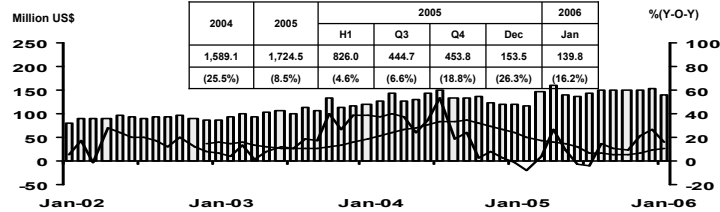


Economic Research Division, Northern Region Office



MANUFACTURING

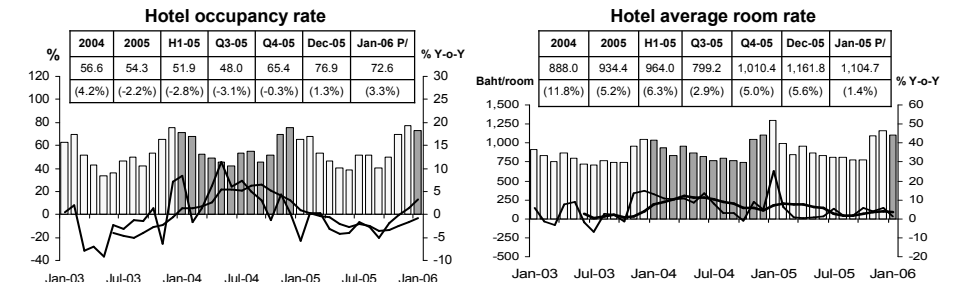
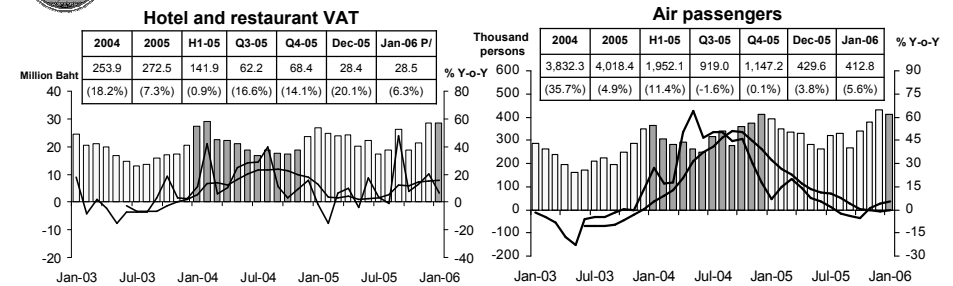
Export value by Lumphun Customs House



Sources: Lumphun Customs House, Padaeng Industry Plc., and Thai Cane and Sugar Cooperation Co.,Ltd.
Economic Research Division, Northern Region Office

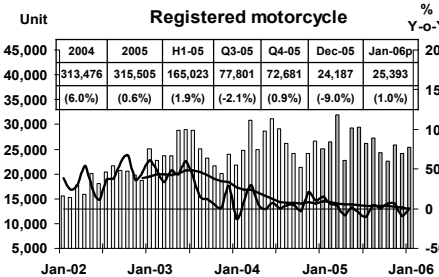
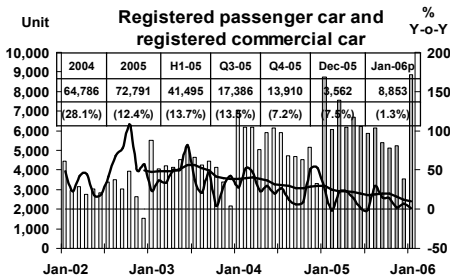
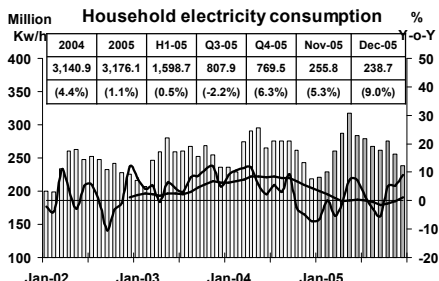
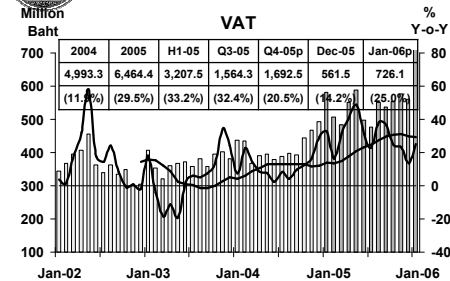


SERVICES



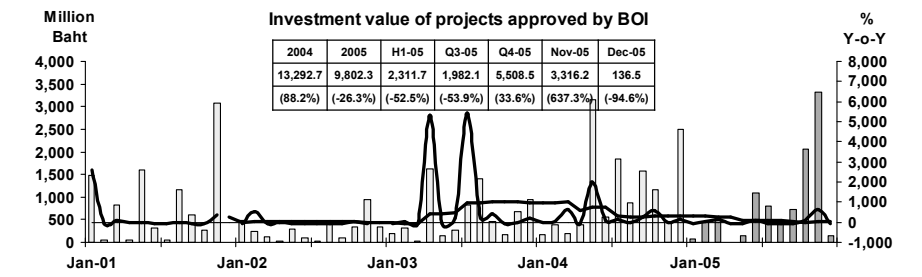
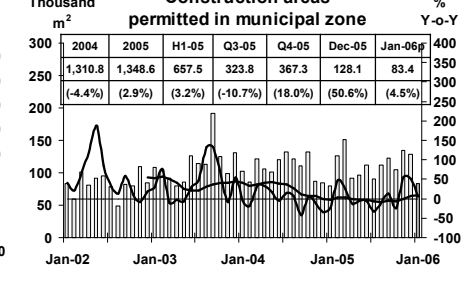
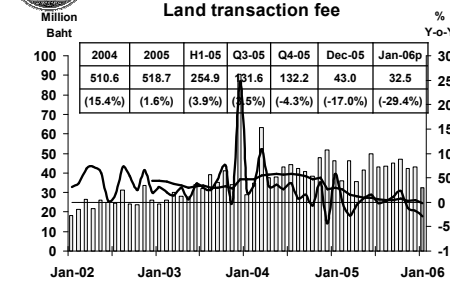
Source: Ministry of Finance, Airports of Thailand Public Company Limited., and Data Management Group
Economic Research Division, Northern Region Office

PRIVATE CONSUMPTION



Sources: Ministry of Finance, Provincial Electricity Authority, Provincial Land Transportation Offices
Economic Research Division, Northern Region Office

PRIVATE INVESTMENT

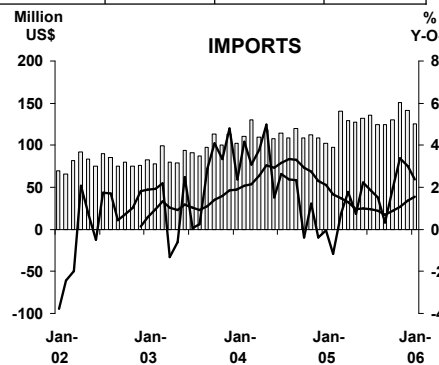
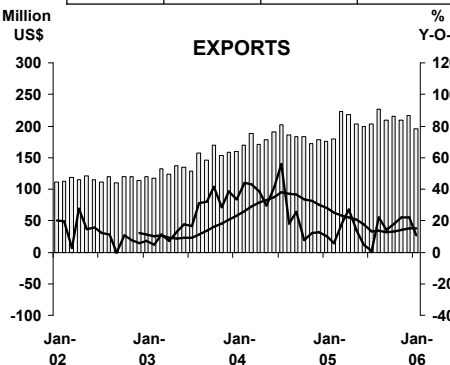


Sources: Municipality Offices; Provincial Land Offices; Customs Department; Northern Region Investment and Economic Center (BOI)
Economic Research Division, Northern Region Office

FOREIGN TRADE

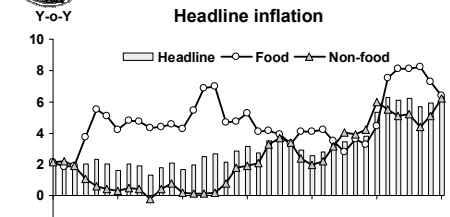


	2004	2005	2005				2006
			H1	Q3	Q4	Dec	Jan
EXPORTS	2,162.3 (28.8%)	2,481.8 (14.8%)	1,199.4 (13.3%)	639.3 (12.0%)	643.1 (20.7%)	217.2 (21.9%)	195.3 (10.8%)
IMPORTS	1,352.8 (21.3%)	1,534.7 (13.4%)	728.1 (7.2%)	384.2 (12.0%)	422.4 (27.9%)	141.4 (30.0%)	125.9 (23.7%)
Trade Balance	809.5	947.1	471.3	255.1	220.7	78.8	69.4



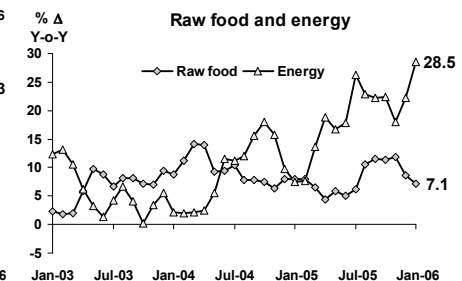
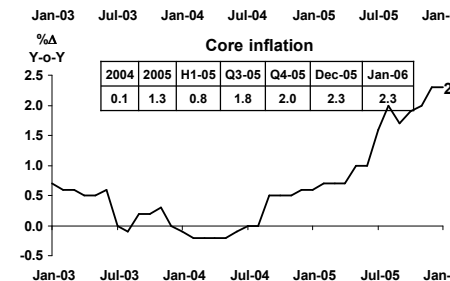
Economic Research Division, Northern Region Office

PRICE LEVEL



Headline inflation (2002 = 100)

%Δ Y-o-Y	2004	2005	H1-05	Q3-05	Q4-05	Dec-05	Jan-06
Headline	2.8	4.6	3.3	5.9	5.9	5.9	6.4
Food	4.8	5.4	3.6	6.7	7.9	7.3	6.4
Non-food	1.7	4.2	3.3	5.5	4.9	5.1	6.2



Sources: Bureau of Trade and Economic Indices, Ministry of Commerce
Note: Northern region's Core CPI data has been released since January 2002

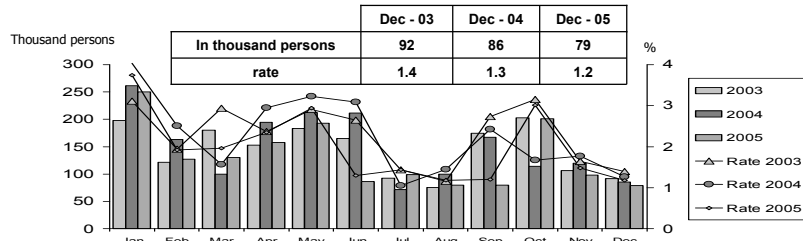
Economic Research Division, Northern Region Office



Labor Force Survey

	% of Total Labour Force (as of Dec 2005)	2004 (Δ %)	H1-05 (Δ %)	Q3-05 (Δ %)	Nov-05 (Δ %)	Dec-05 (Δ %)
Labor Force (1,000 Persons)	100.0	6,787	6,638	6,660	6,645	6,705
Employed persons	98.7	3.6	-1.6	-2.3	-1.5	-0.7
• Agriculture	52.1	-3.8	-6.9	-0.2	-3.3	0.5
• Non-agriculture	46.6	13.0	4.1	-4.4	0.3	-2.1
- Wholesale & retail trade	12.7	26.2	-7.5	-5.6	0.1	-4.2
- Manufacturing	9.2	16.6	-14.7	-15.3	5.0	-14.5
- Construction	5.6	4.5	34.1	-9.3	6.8	8.2
- Hotel & restaurants Services	5.3	-2.5	83.4	28.5	-3.2	9.0
- Others	13.8	8.8	4.2	-1.1	-4.3	2.0
Unemployed persons	1.2	-6.5	-59.3	-52.1	-17.9	-7.7
Seasonally inactive persons	0.1	-4.0	156.9	91.7	-3.5	-81.9

Unemployment



Source: National Statistical Office

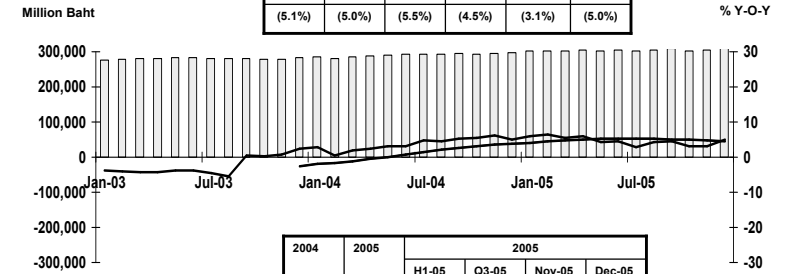
Economic Research Division, Northern Region Office



DEPOSITS AND CREDITS OF COMMERCIAL BANKS

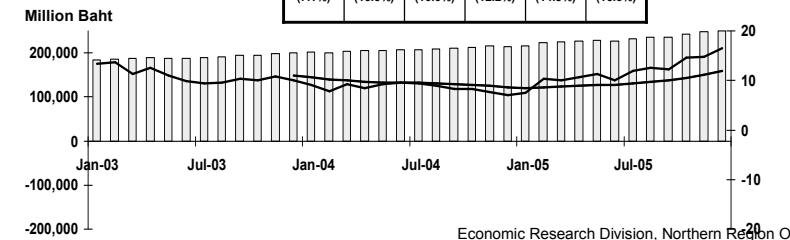
2004	2005	2005			
		Q3-05	Q4-05	Nov-05	Dec-05
297,566	312,509	302,318	304,834	305,260	312,509
(5.1%)	(5.0%)	(5.5%)	(4.5%)	(3.1%)	(5.0%)

Deposits



2004	2005	2005		
		H1-05	Q3-05	Nov-05
214,795	250,244	227,325	236,107	247,636
(7.1%)	(16.5%)	(10.0%)	(12.2%)	(14.8%)

Credits



Economic Research Division, Northern Region Office