

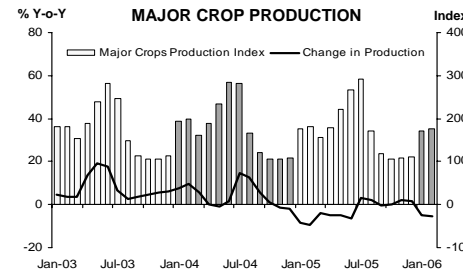
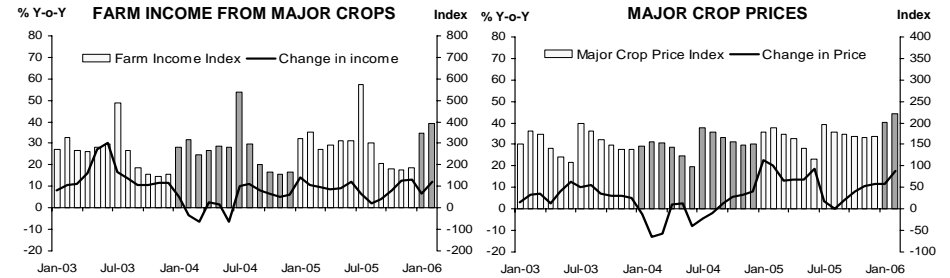


# แถลงข่าวเศรษฐกิจการเงินภาคเหนือ เดือนกุมภาพันธ์ 2549

Economic Research Division, Northern Region Office



## FARM INCOME FROM MAJOR CROPS



**CHANGE IN FARMCOME FROM MAJOR CROPS,  
MAJOR CROP PRODUCTION AND MAJOR CROP PRICES**

△ % (Y-O-Y)	2004	2005	2005		2006	
			H1	Q3	Jan	Feb
Farm Income	3.8%	10.1%	10.2%	3.9%	6.8%	12.3%
Production	1.8%	-1.0%	-6.0%	1.2%	-4.8%	-5.2%
Price	2.0%	11.1%	16.2%	2.7%	11.6%	17.5%

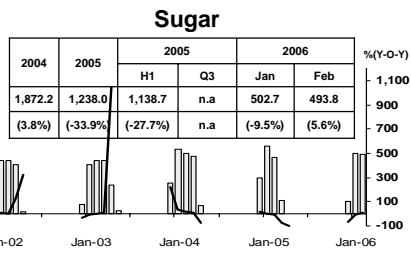
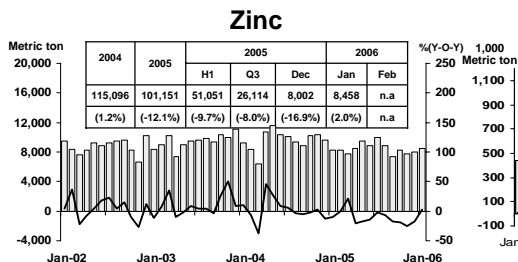
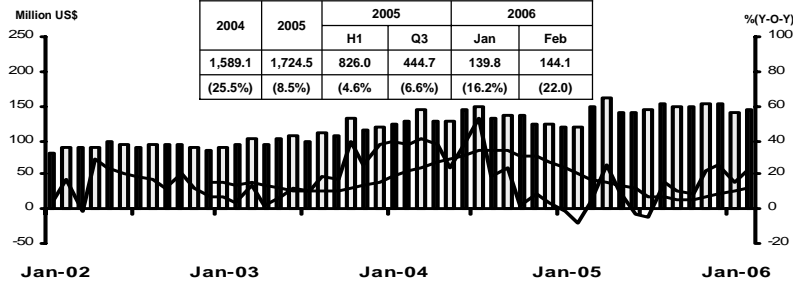
Source : Index constructed using data from Ministry of Agriculture and Co-operatives. (1988 =100)

Economic Research Division, Northern Region Office



## MANUFACTURING

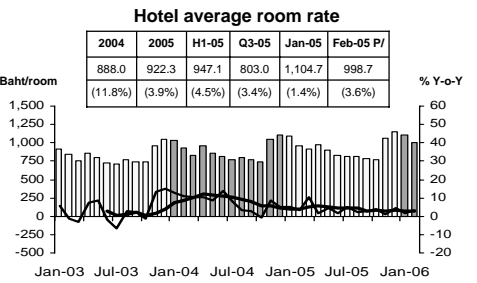
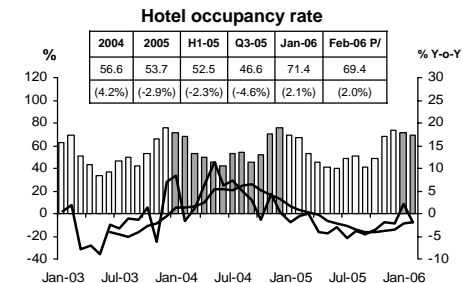
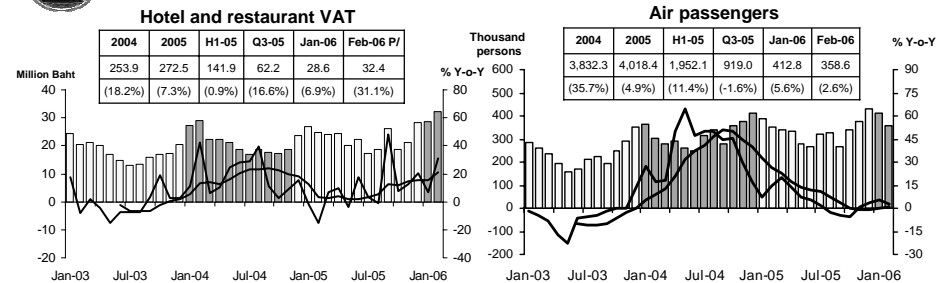
Export value by Lumphun Customs House



Sources: Lumphun Customs House, Padaeng Industry Plc., and Thai Cane and Sugar Cooperation Co.,Ltd.  
Economic Research Division, Northern Region Office

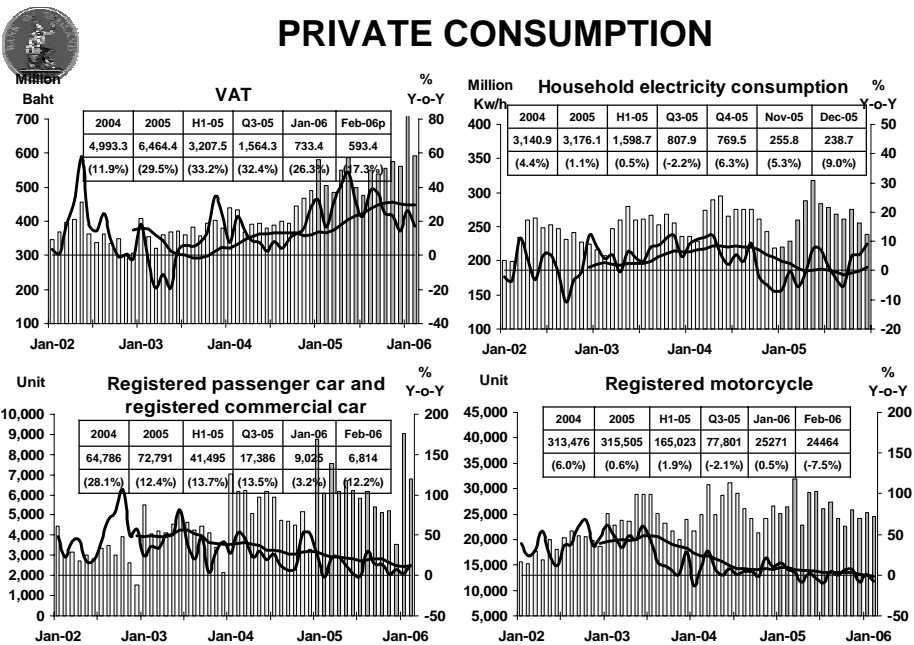


## SERVICES



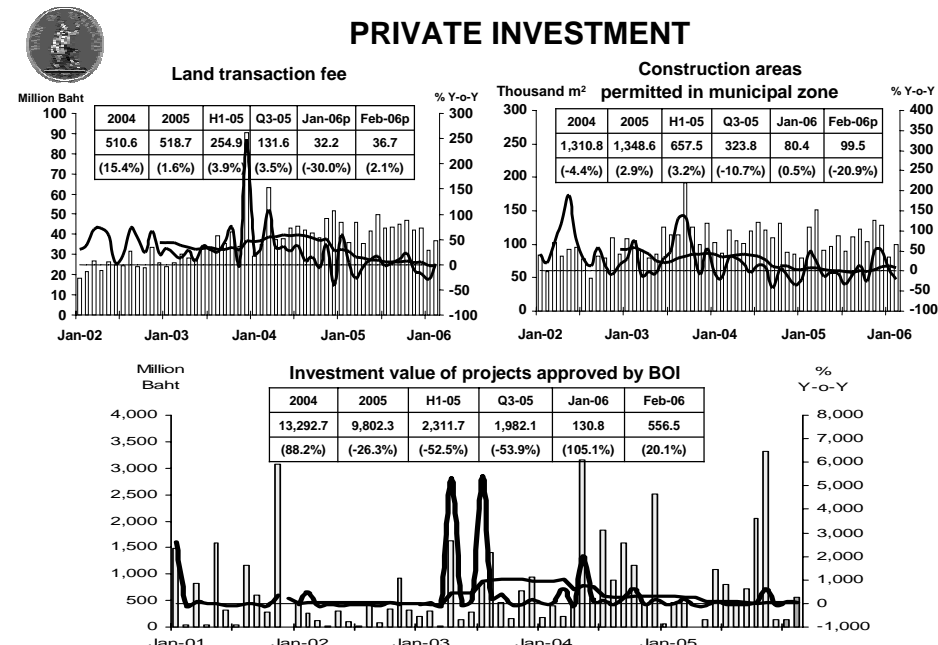
Source: Ministry of Finance, Airports of Thailand Public Company Limited., and Data Management Group  
Economic Research Division, Northern Region Office

# PRIVATE CONSUMPTION



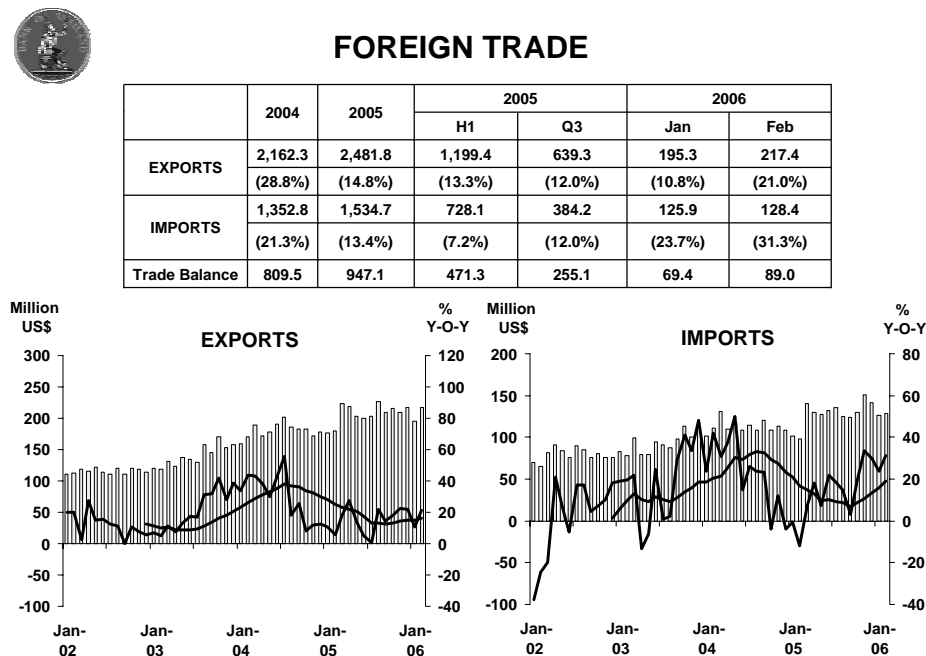
Sources: Ministry of Finance, Provincial Electricity Authority, Provincial Land Transportation Offices  
Economic Research Division, Northern Region Office

# PRIVATE INVESTMENT



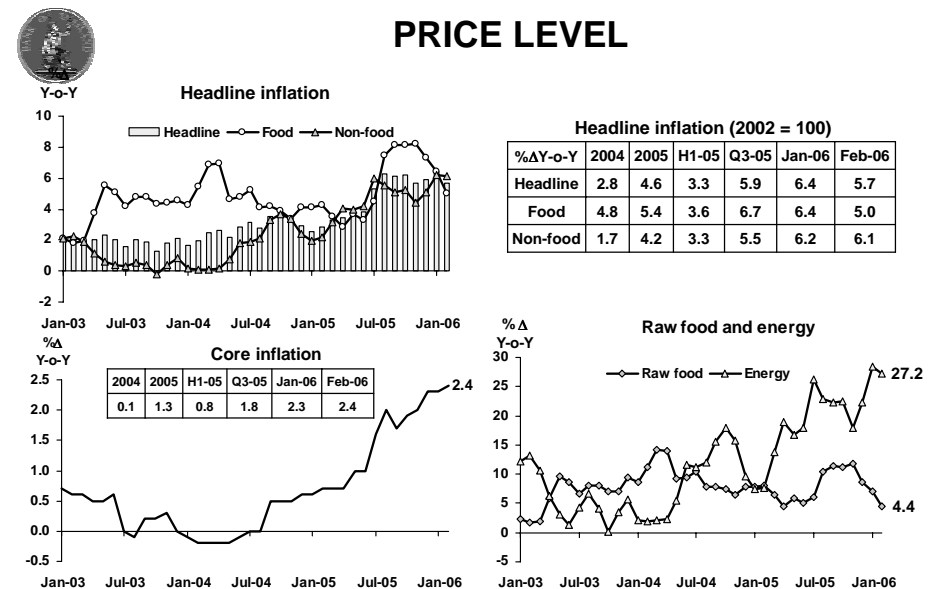
Sources: Municipality Offices; Provincial Land Offices; Customs Department; Northern Region Investment and Economic Center (BOI)  
Economic Research Division, Northern Region Office

# FOREIGN TRADE



Economic Research Division, Northern Region Office

# PRICE LEVEL



Sources: Bureau of Trade and Economic Indices, Ministry of Commerce  
Note: Northern region's Core CPI data has been released since January 2002

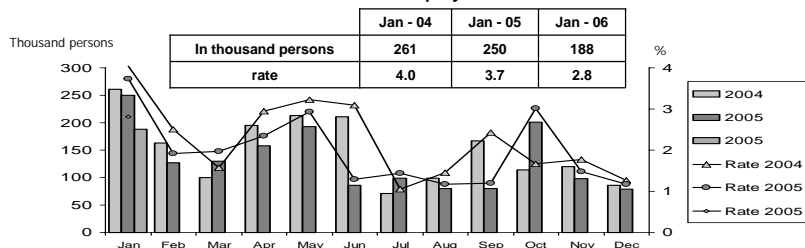
Economic Research Division, Northern Region Office



### Labor Force Survey

	% of Total Labour Force (as of Jan 2006)	2004 (Δ %)	H1-05 (Δ %)	Q3-05 (Δ %)	Dec-05 (Δ %)	Jan-06 (Δ %)
<b>Labor Force (1,000 Persons)</b>	<b>100.0</b>	<b>6,787</b>	<b>6,638</b>	<b>6,660</b>	<b>6,705</b>	<b>6,677</b>
<b>Employed persons</b>	<b>96.7</b>	<b>3.6</b>	<b>-1.6</b>	<b>-2.3</b>	<b>-0.7</b>	<b>1.4</b>
• Agriculture	46.4	-3.8	-6.9	-0.2	0.5	6.2
• Non-agriculture	50.3	13.0	4.1	-4.4	-2.1	-2.7
- Wholesale & retail trade	13.8	26.2	-7.5	-5.6	-4.2	0.0
- Manufacturing	11.9	16.6	-14.7	-15.3	-14.5	11.6
- Construction	5.8	4.5	34.1	-9.3	8.2	-18.1
- Hotel & restaurants Services	5.4	-2.5	83.4	28.5	9.0	0.5
- Others	13.3	8.8	4.2	-1.1	2.0	-9.4
<b>Unemployed persons</b>	<b>2.8</b>	<b>-6.5</b>	<b>-59.3</b>	<b>-52.1</b>	<b>-7.7</b>	<b>-24.9</b>
<b>Seasonally inactive persons</b>	<b>0.5</b>	<b>-4.0</b>	<b>156.9</b>	<b>91.7</b>	<b>-81.9</b>	<b>-52.2</b>

### Unemployment

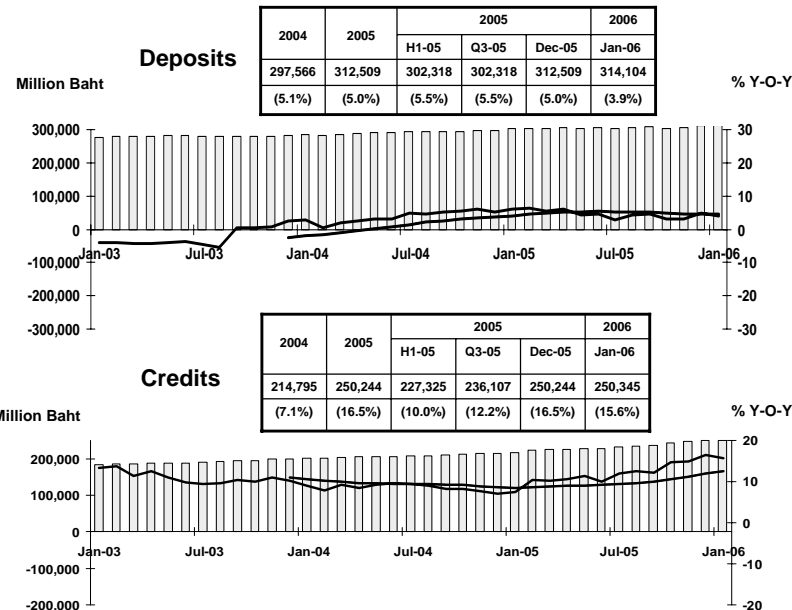


Source: National Statistical Office

Economic Research Division, Northern Region Office



### DEPOSITS AND CREDITS OF COMMERCIAL BANKS



Economic Research Division, Northern Region Office