

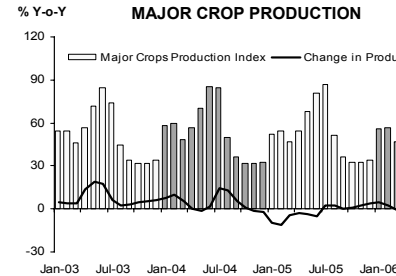
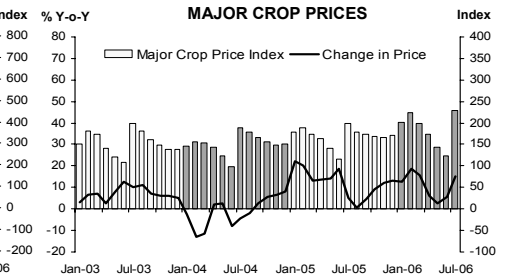
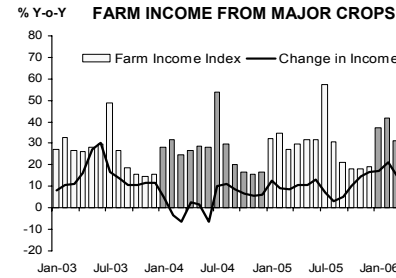


แถลงข่าวเศรษฐกิจการเงินภาคเหนือ เดือนกรกฎาคม 2549

Economic Research Division, Northern Region Office



FARM INCOME FROM MAJOR CROPS



CHANGE IN FARM INCOME FROM MAJOR CROPS, MAJOR CROP PRODUCTION AND MAJOR CROP PRICES

△ % (Y-O-Y)	2005	2006				
		Q1	Q2	H1	Jun	July
Farm Income	11.5	17.3	7.7	13.7	4.8	-4.7
Production	-0.4	1.5	2.2	1.6	-0.9	-20.0
Price	11.9	15.8	5.5	12.1	5.7	15.3

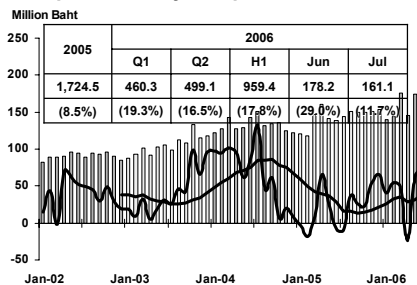
Source : Index constructed using data from Ministry of Agriculture and Co-operatives. (1988 =100)

Economic Research Division, Northern Region Office

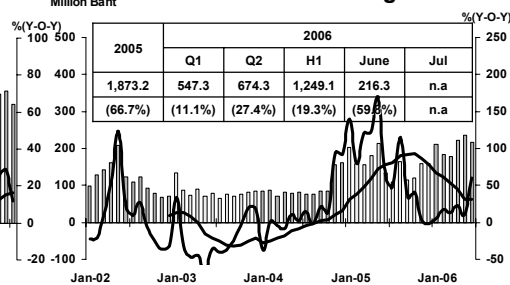


MANUFACTURING

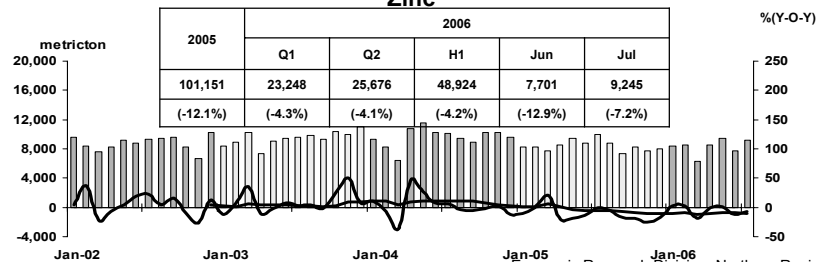
Export value by Lamphun Customs House



Vat : Manufacturing



Zinc



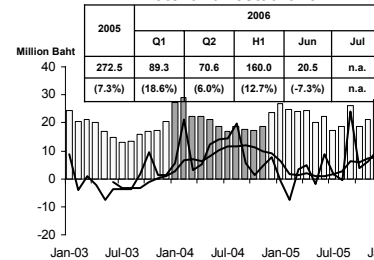
Sources: Lamphun Customs House and Pa-Dang Industry Co.,Ltd.

Economic Research Division, Northern Region Office

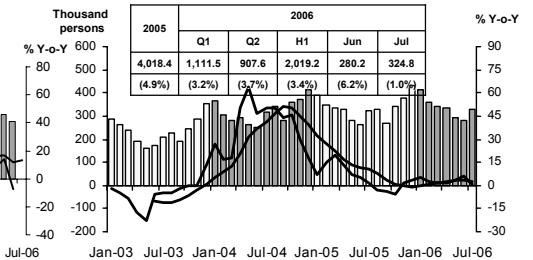


SERVICES

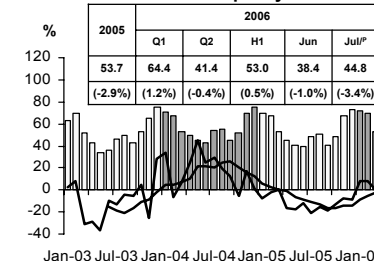
Hotel and restaurant VAT



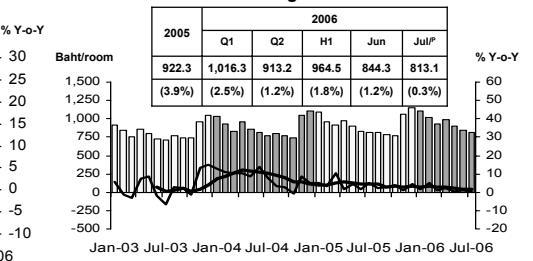
Air passengers



Hotel occupancy rate



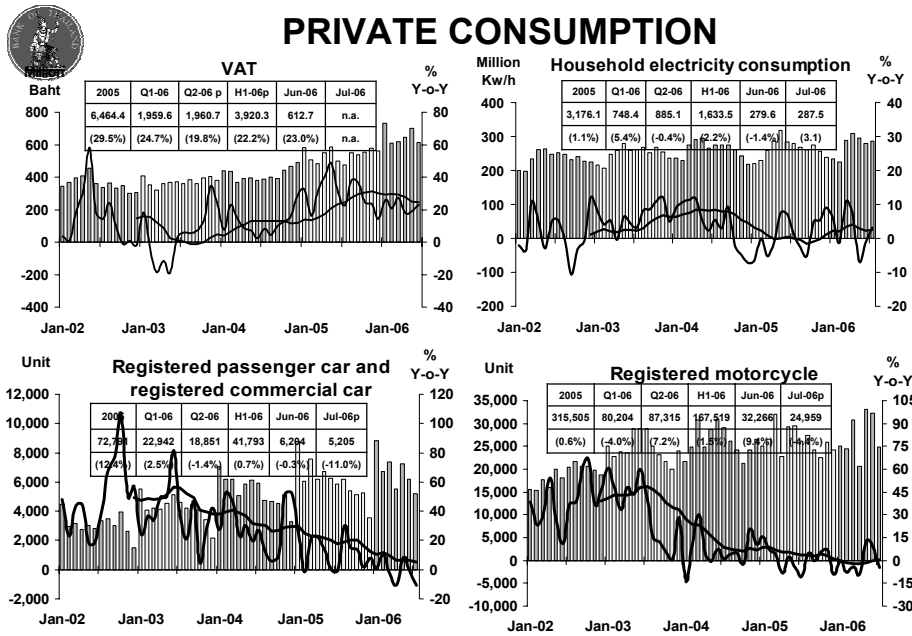
Hotel average room rate



Source: Ministry of Finance, Airports of Thailand Public Company Limited., and Data Management Group

Economic Research Division, Northern Region Office

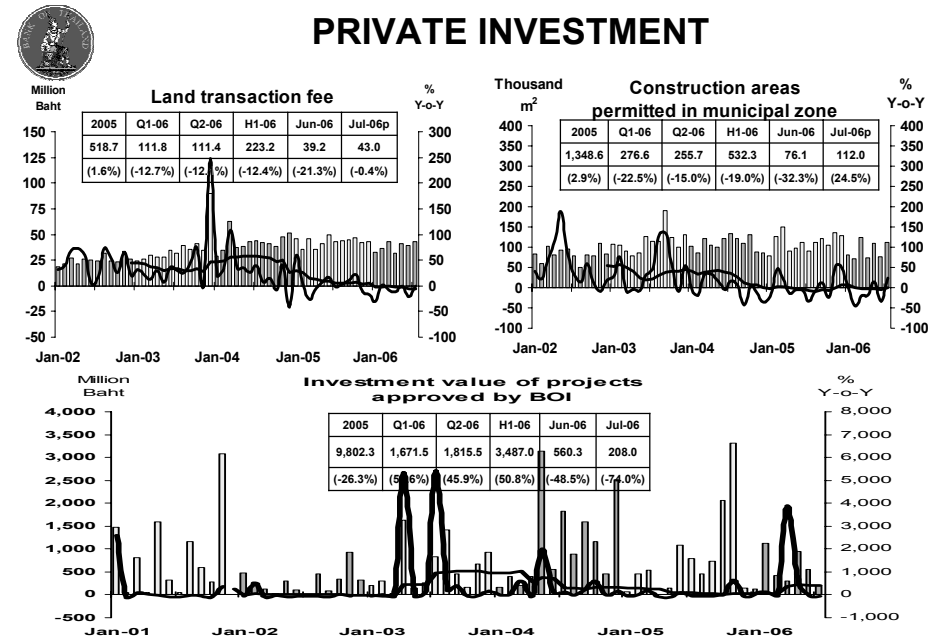
PRIVATE CONSUMPTION



Sources: Ministry of Finance, Provincial Electricity Authority, Provincial Land Transportation Offices

Economic Research Division, Northern Region Office

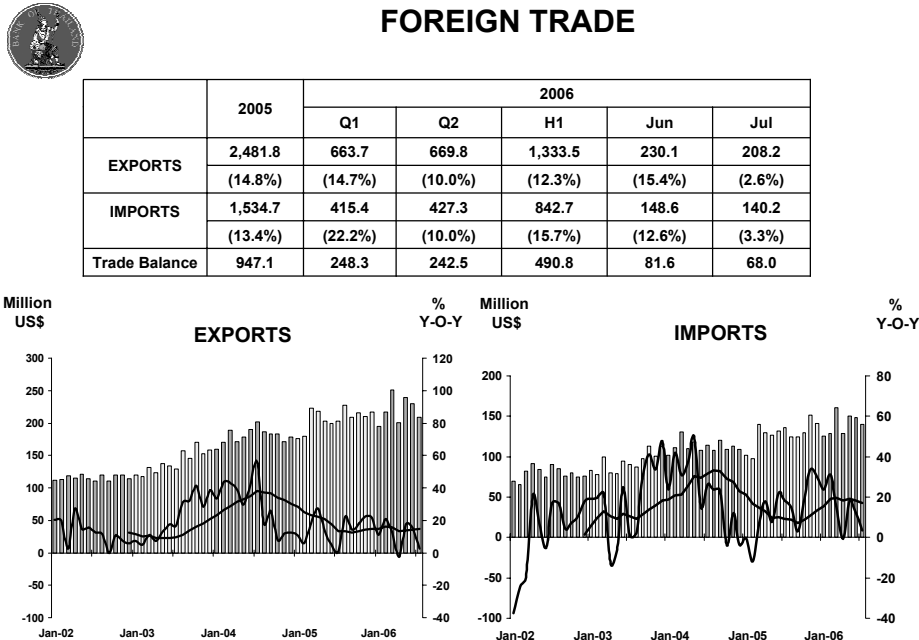
PRIVATE INVESTMENT



Sources: Municipality Offices; Provincial Land Offices; Customs Department; Northern Region Investment and Economic Center (BOI)

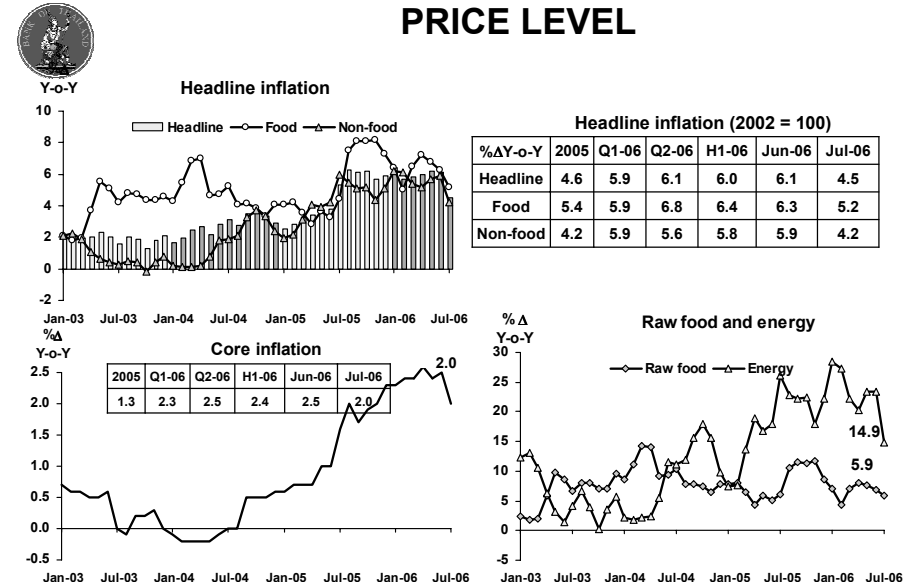
Economic Research Division, Northern Region Office

FOREIGN TRADE



Economic Research Division, Northern Region Office

PRICE LEVEL



Sources: Bureau of Trade and Economic Indices, Ministry of Commerce
Note: Northern region's Core CPI data has been released since January 2002

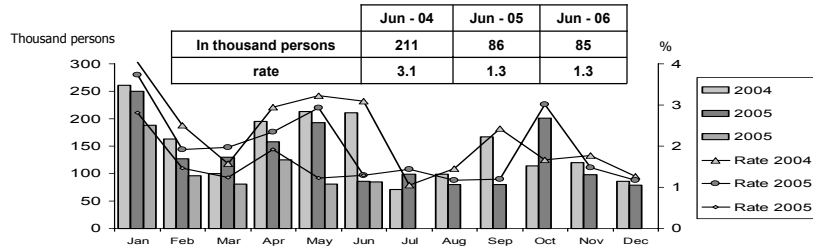
Economic Research Division, Northern Region Office



Labor Force Survey

	% of Total Labour Force (as of Jun 2006)	H1-05 (Δ%)	2005 (Δ%)	Q1-06 (Δ%)	May-06 (Δ%)	Jun-06 (Δ%)
Labor Force (1,000 Persons)	100.0	6,638	6,705	6,520	6,639	6,526
Employed persons	98.5	-1.6	-0.7	-0.5	3.0	-1.4
• Agriculture	51.4	-6.9	0.5	5.6	10.6	5.0
• Non-agriculture	47.1	4.1	-2.1	-5.3	-2.5	-7.5
- Wholesale & retail trade	12.7	-7.5	-4.2	-6.0	4.6	-7.9
- Manufacturing	9.9	-14.7	-14.5	-9.3	-7.6	-8.6
- Construction	6.1	34.1	8.2	8.8	-14.0	-13.6
- Hotel & restaurants Services	5.1	83.4	9.0	-13.1	-4.1	-12.3
- Others	13.3	4.2	2.0	-6.1	2.2	-1.0
Unemployed persons	1.3	-59.3	-7.7	-37.9	-58.0	-1.8
Seasonally inactive persons	0.2	156.9	-81.9	-28.7	-32.3	-55.8

Unemployment



Source: National Statistical Office

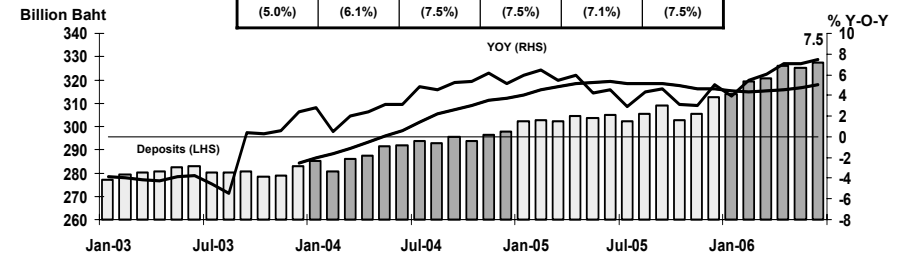
Economic Research Division, Northern Region Office



DEPOSITS AND CREDITS OF COMMERCIAL BANKS

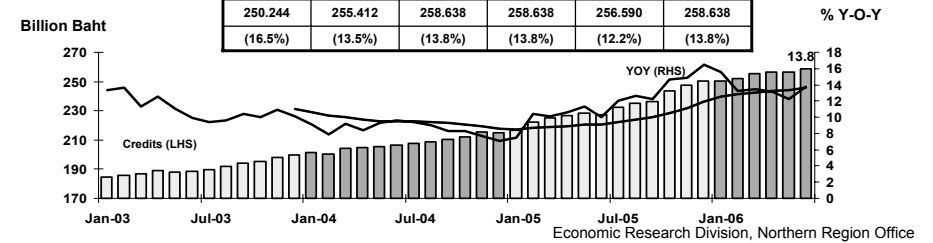
Deposits

Billion Baht					
2005	Q1-06	Q2-06	H1-06	May-06	Jun-06
312,509	320,860	327,545	327,545	324,991	327,545
(5.0%)	(6.1%)	(7.5%)	(7.5%)	(7.1%)	(7.5%)



Credits

Billion Baht					
2005	Q1-06	Q2-06	H1-06	May-06	Jun-06
250,244	255,412	258,638	258,638	256,590	258,638
(16.5%)	(13.5%)	(13.8%)	(13.8%)	(12.2%)	(13.8%)



Economic Research Division, Northern Region Office