



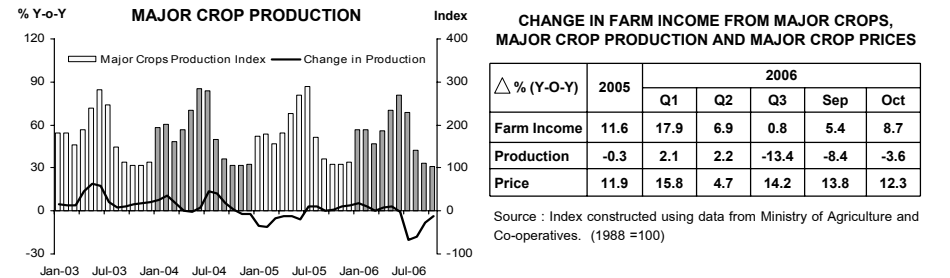
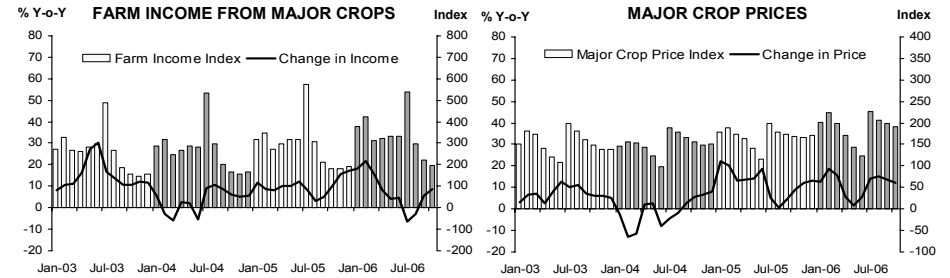
# แถลงข่าวเศรษฐกิจการเงินภาคเหนือ

## เดือนตุลาคม 2549

Economic Research Division, Northern Region Office



### FARM INCOME FROM MAJOR CROPS



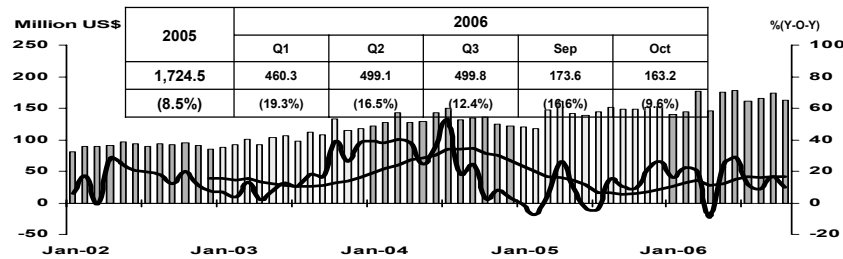
Economic Research Division, Northern Region Office



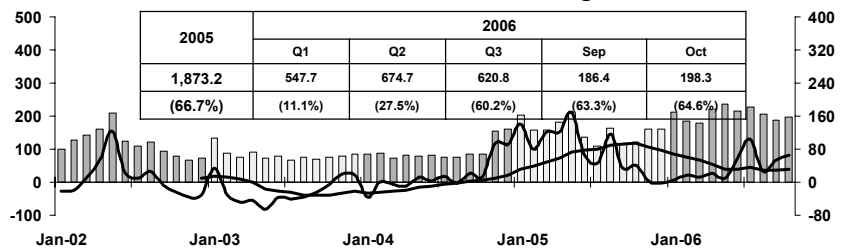
### MANUFACTURING

การผลิตภาคอุตสาหกรรม

Export value by Lamphun Customs House



Vat : Manufacturing



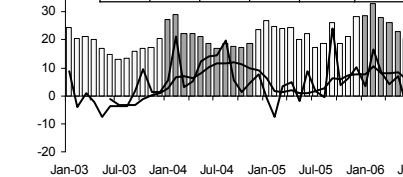
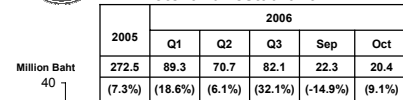
Sources: Lamphun Customs House, and Ministry of Finance

Economic Research Division, Northern Region Office

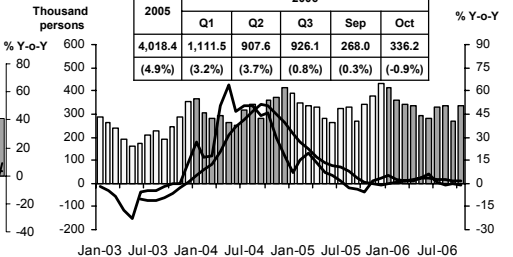
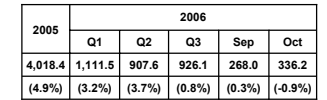


### SERVICES

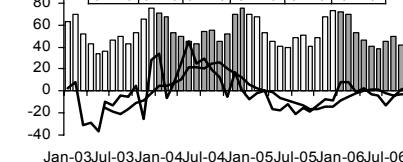
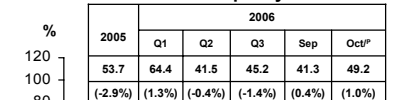
Hotel and restaurant VAT



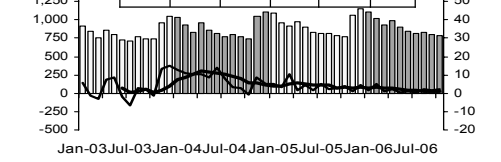
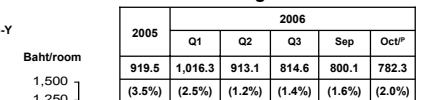
Air passengers



Hotel occupancy rate



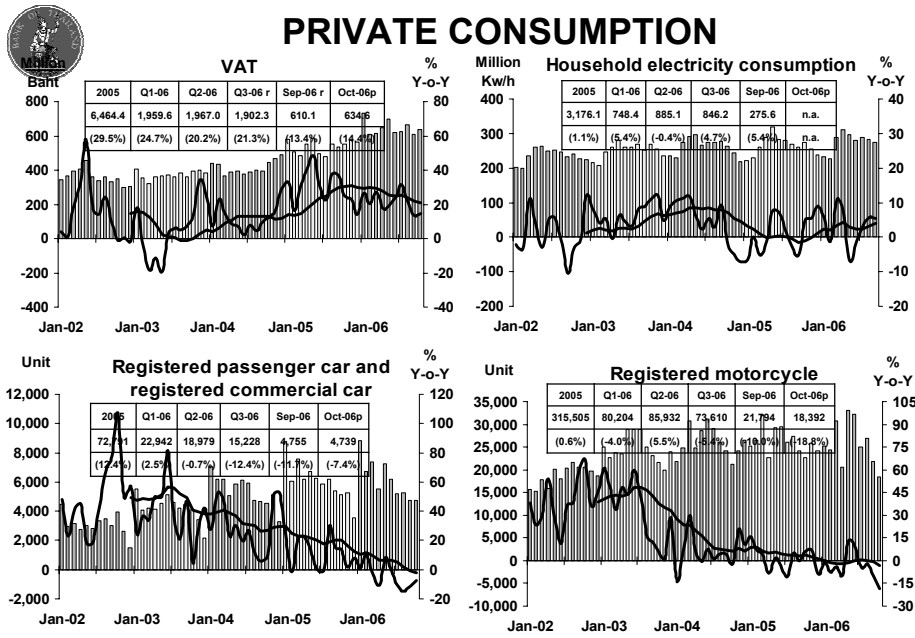
Hotel average room rate



Source: Ministry of Finance, Airports of Thailand Public Company Limited., and Data Management Group

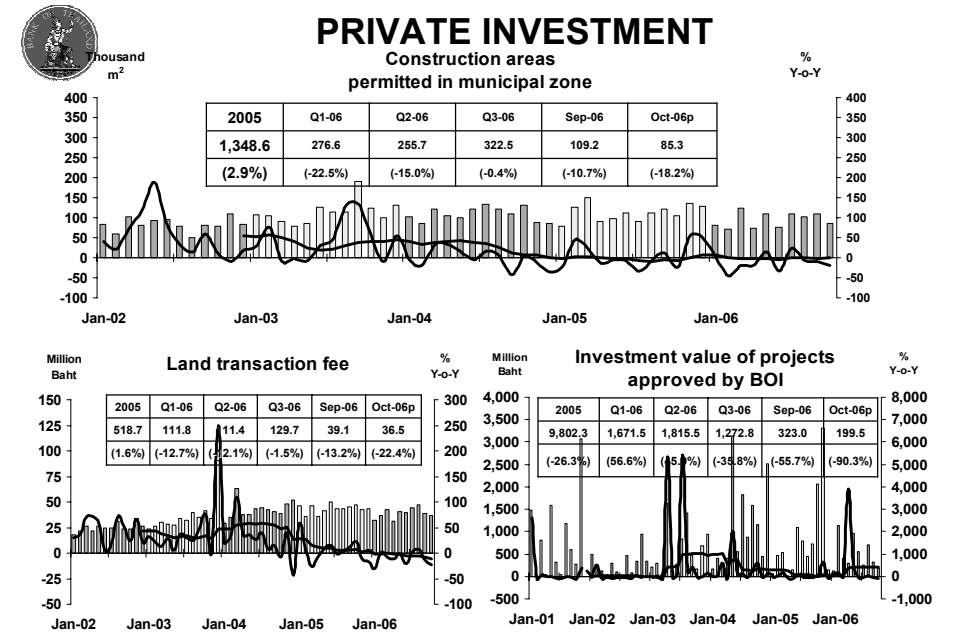
Economic Research Division, Northern Region Office

# PRIVATE CONSUMPTION



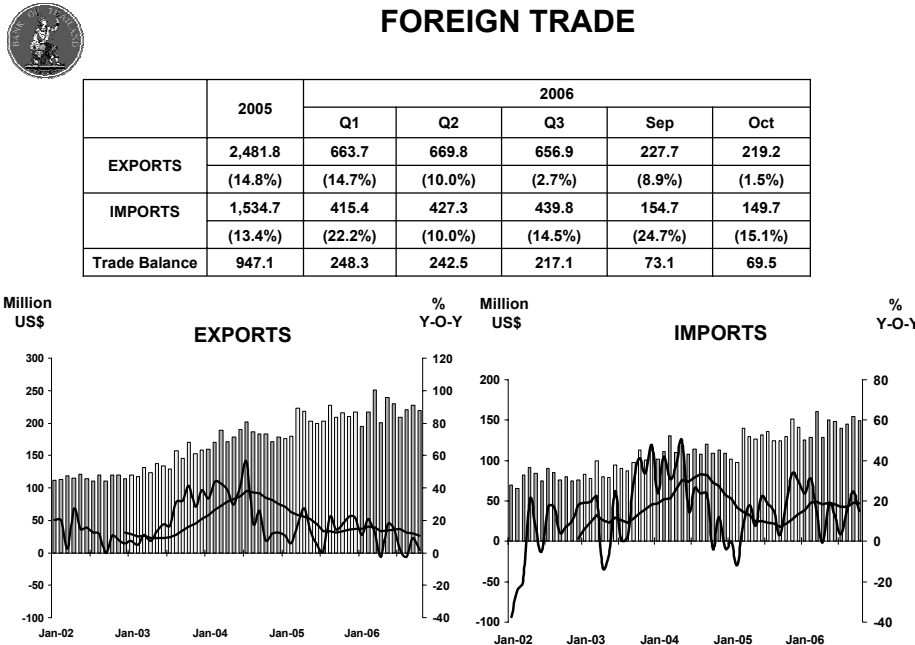
Sources: Ministry of Finance, Provincial Electricity Authority, Provincial Land Transportation Offices  
Economic Research Division, Northern Region Office

# PRIVATE INVESTMENT



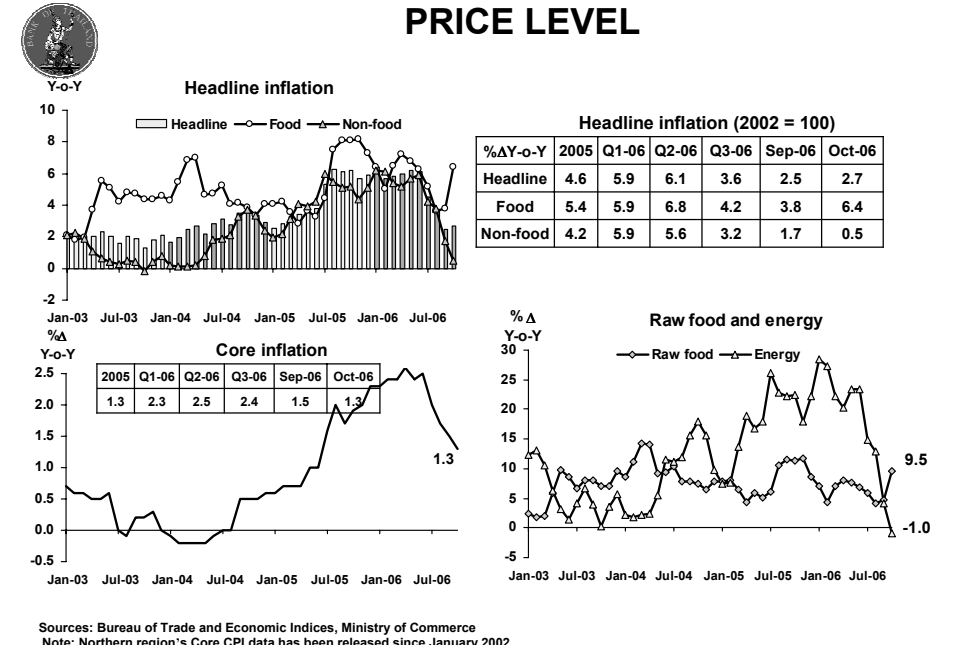
Sources: Municipality Offices; Provincial Land Offices; Customs Department; Northern Region Investment and Economic Center (BOI)  
Economic Research Division, Northern Region Office

# FOREIGN TRADE



Economic Research Division, Northern Region Office

# PRICE LEVEL



Sources: Bureau of Trade and Economic Indices, Ministry of Commerce  
Note: Northern region's Core CPI data has been released since January 2002

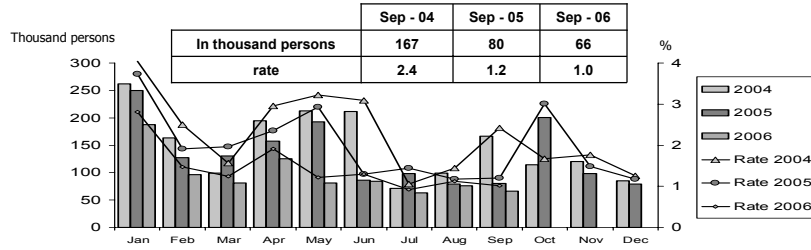
Economic Research Division, Northern Region Office



### Labor Force Survey

	% of Total Labour Force (as of Sep 2006)	2005 (Δ%)	Q1-06 (Δ%)	Q2-06 (Δ%)	Aug-06 (Δ%)	Sep-06 (Δ%)
<b>Labor Force (1,000 Persons)</b>	<b>100.0</b>	<b>6,705</b>	<b>6,520</b>	<b>6,526</b>	<b>6,776</b>	<b>6,503</b>
<b>Employed persons</b>	<b>98.8</b>	<b>-0.7</b>	<b>-0.5</b>	<b>-1.4</b>	<b>0.3</b>	<b>-2.2</b>
• Agriculture	48.5	0.5	5.6	5.0	-5.0	-7.1
• Non-agriculture	50.3	-2.1	-5.3	-7.5	6.2	3.0
- Wholesale & retail trade	15.0	-4.2	-6.0	-7.9	8.5	12.8
- Manufacturing	9.3	-14.5	-9.3	-8.6	13.3	-14.0
- Construction	7.2	8.2	8.8	-13.6	-0.3	13.5
- Hotel & restaurants Services	6.0	9.0	-13.1	-12.3	-2.8	5.4
- Others	12.8	2.0	-6.1	-1.0	4.6	0.9
<b>Unemployed persons</b>	<b>1.0</b>	<b>-7.7</b>	<b>-37.9</b>	<b>-1.8</b>	<b>-5.0</b>	<b>-17.5</b>
<b>Seasonally inactive persons</b>	<b>0.2</b>	<b>-81.9</b>	<b>-28.7</b>	<b>-55.8</b>	<b>-0.7</b>	<b>13.1</b>

### Unemployment



Source: National Statistical Office

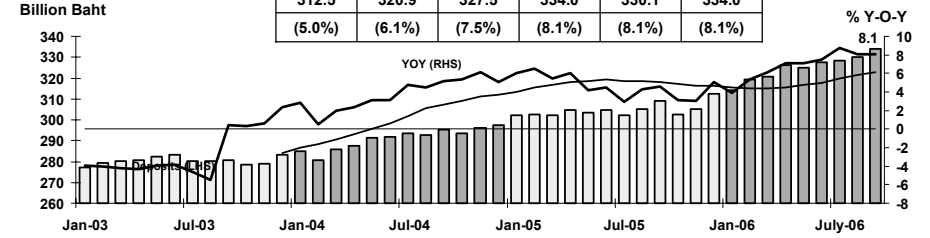
Economic Research Division, Northern Region Office



### DEPOSITS AND CREDITS OF COMMERCIAL BANKS

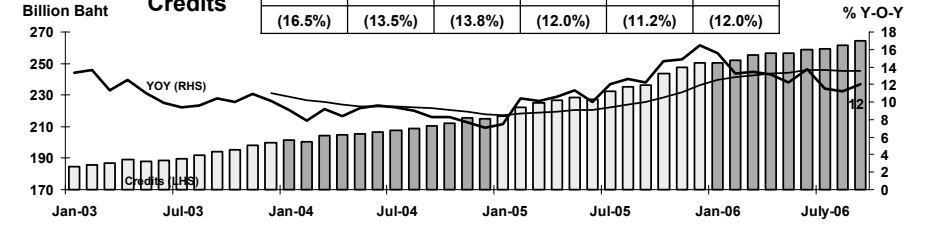
#### Deposits

2005	Q1-06	Q2-06	Q3-06	Aug-06	Sep-06
312.5	320.9	327.5	334.0	330.1	334.0
(5.0%)	(6.1%)	(7.5%)	(8.1%)	(8.1%)	(8.1%)



#### Credits

2005	Q1-06	Q2-06	Q3-06	Aug-06	Sep-06
250.2	255.4	258.6	264.5	261.6	264.5
(16.5%)	(13.5%)	(13.8%)	(12.0%)	(11.2%)	(12.0%)



Economic Research Division, Northern Region Office