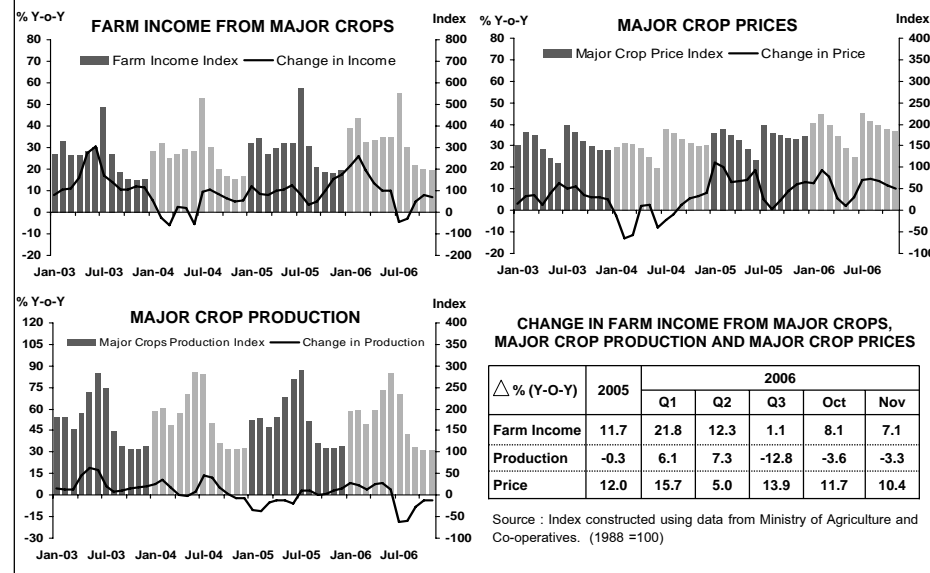


แถลงข่าวเศรษฐกิจการเงินภาคเหนือ เดือนพฤศจิกายน 2549



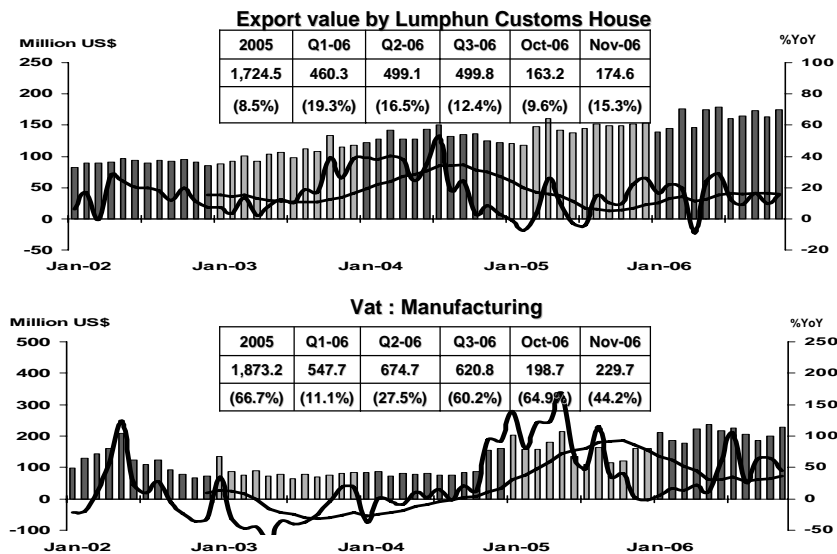
FARM INCOME FROM MAJOR CROPS

Economic Research Division, Northern Region Office



MANUFACTURING

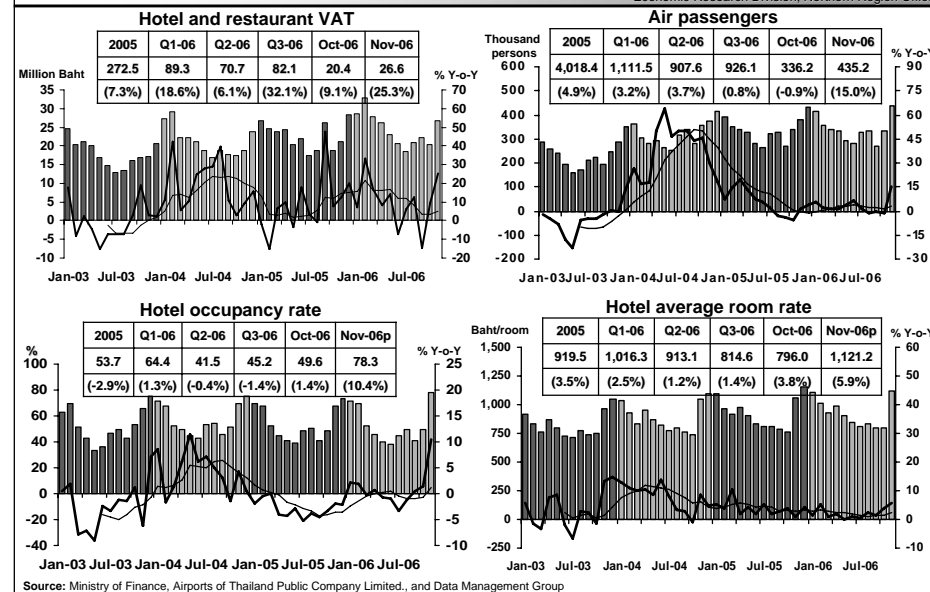
3



SERVICES

4

Economic Research Division, Northern Region Office



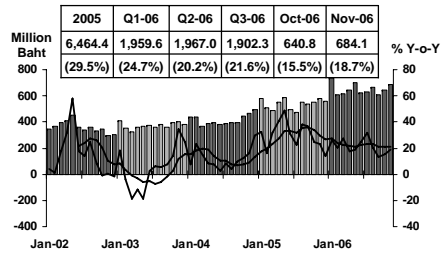


Private Consumption

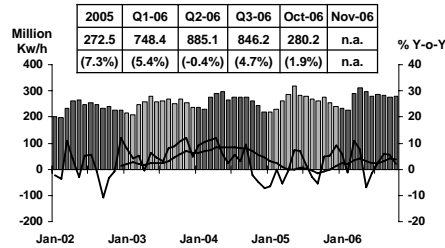
5

Economic Research Division, Northern Region Office

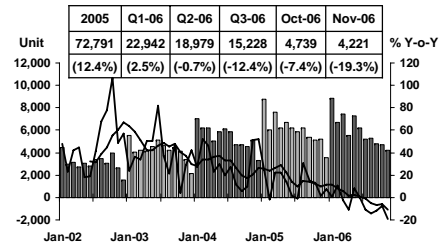
VAT



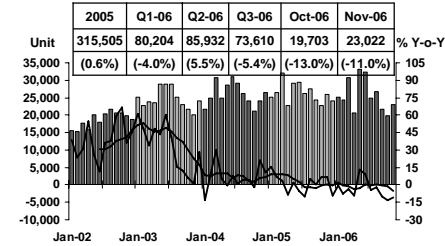
Household electricity consumption



Registered passenger car and registered commercial car



Registered motorcycle



Sources: Ministry of Finance, Provincial Electricity Authority, Provincial Land Transportation Offices

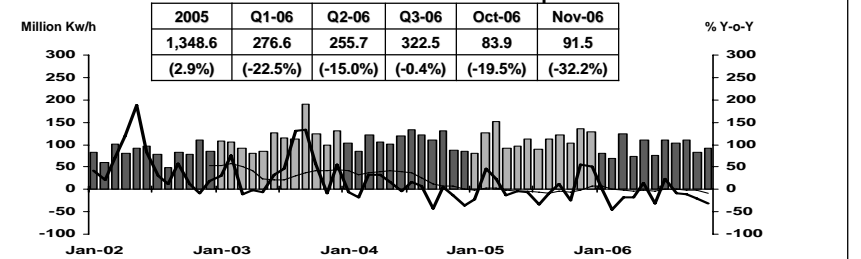


Private Investment

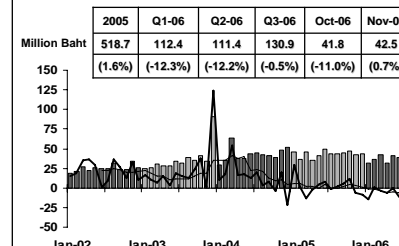
6

Economic Research Division, Northern Region Office

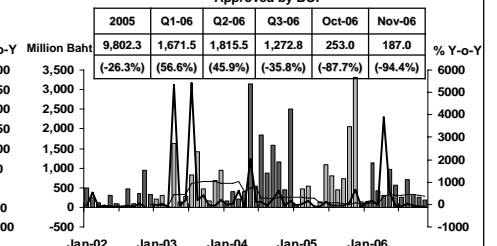
Construction Areas Permitted in Municipal Zone



Land Transaction Fee



Investment Value of Projects Approved by BOI



Sources: Cement Thai Plc. and Jalapathan Cement Plc., Municipality Offices, Provincial Land Offices, Customs Department, Northern Region Investment and Economic Center (BOI)



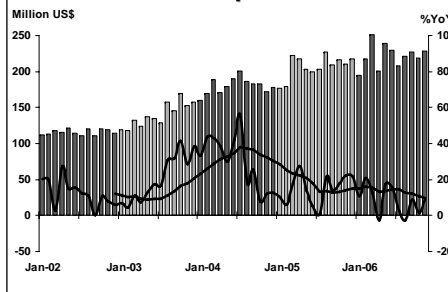
Foreign Trade

7

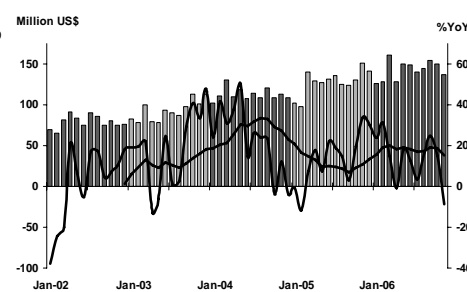
Economic Research Division, Northern Region Office

	2005	2006				
		Q1	Q2	Q3	Oct	Nov
EXPORTS	2,481.8 (14.8%)	663.7 (14.7%)	669.8 (10.0%)	656.9 (2.7%)	219.2 (1.5%)	228.5 (8.9%)
IMPORTS	1,534.7 (13.4%)	415.4 (22.2%)	427.3 (10.0%)	439.8 (14.5%)	149.7 (15.1%)	137.5 (-8.9%)
Trade Balance	947.1	248.3	242.5	217.1	69.5	91.0

Export



Import

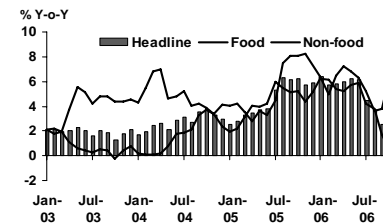


Price Level

8

Economic Research Division, Northern Region Office

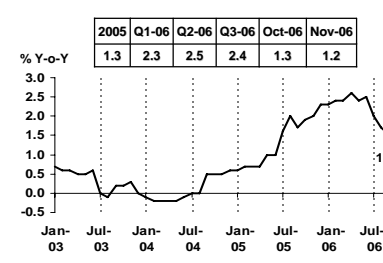
Headline Inflation



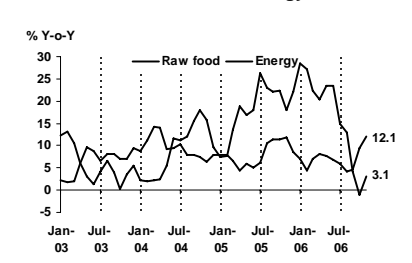
Headline inflation (2002 = 100)

% Y-o-Y	2005	Q1-06	Q2-06	Q3-06	Oct-06	Nov-06
Headline	4.6	5.9	6.1	3.6	2.7	3.8
Food	5.4	5.9	6.8	4.2	6.4	7.8
Non-food	4.2	5.9	5.6	3.2	0.5	1.3

Core Inflation



Rawfood and Energy



Sources: Bureau of Trade and Economic Indices, Ministry of Commerce
Note: Northern region's Core CPI data has been released since January 2002

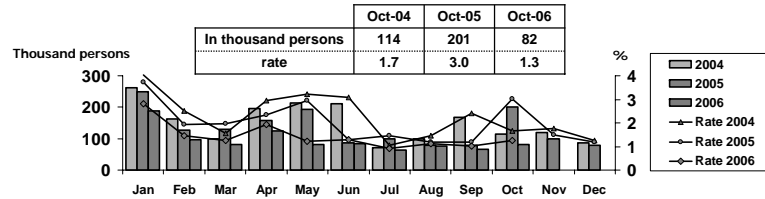


Labor Force Survey

Economic Research Division, Northern Region Office

	% of Total Labor Force (as of Oct 2006)	2005 (Δ%)	Q1-06 (Δ%)	Q2-06 (Δ%)	Sep-06 (Δ%)	Oct-06 (Δ%)
Labor Force (1,000 Persons)	100.0	6,705	6,520	6,526	6,503	6,528
Employed persons	98.4	-0.7	-0.5	-1.4	-2.2	-0.7
• Agriculture	47.0	0.5	5.6	5.0	-7.1	1.9
• Non-agriculture	51.4	-2.1	-5.3	-7.5	3.0	-3.0
- Wholesale & retail trade	13.8	-4.2	-6.0	-7.9	12.8	-9.9
- Manufacturing	12.8	-14.5	-9.3	-8.6	-14.0	16.4
- Construction	6.3	8.2	8.8	-13.6	13.5	-9.3
- Hotel & restaurants Services	5.0	9.0	-13.1	-12.3	5.4	-5.8
- Others	13.5	2.0	-6.1	-1.0	0.9	-6.5
Unemployed persons	1.3	-7.7	-37.9	-1.8	-17.5	-59.1
Seasonally inactive persons	0.3	-81.9	-28.7	-55.8	13.1	178.2

Unemployment



Source : National Statistical Office



DEPOSITS AND CREDITS OF COMMERCIAL BANKS

Economic Research Division, Northern Region Office

