

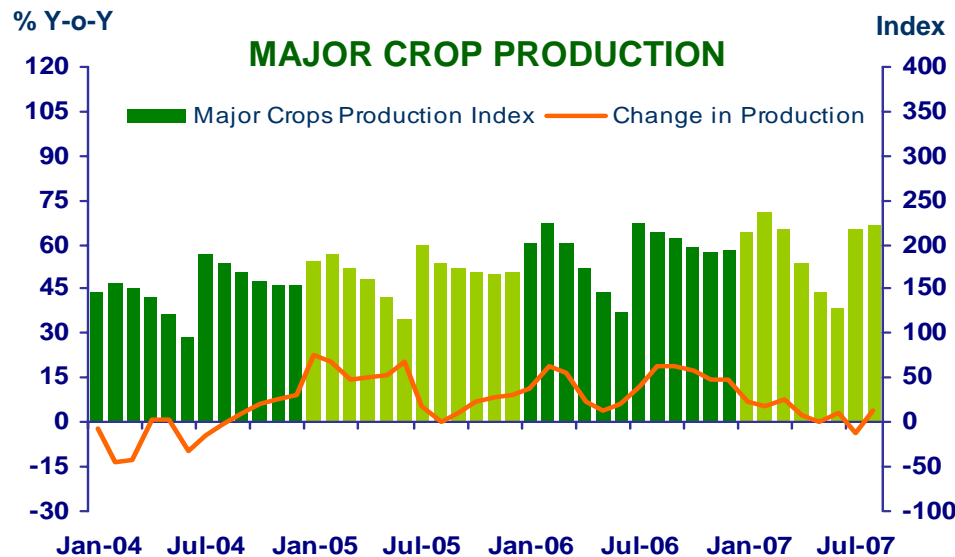
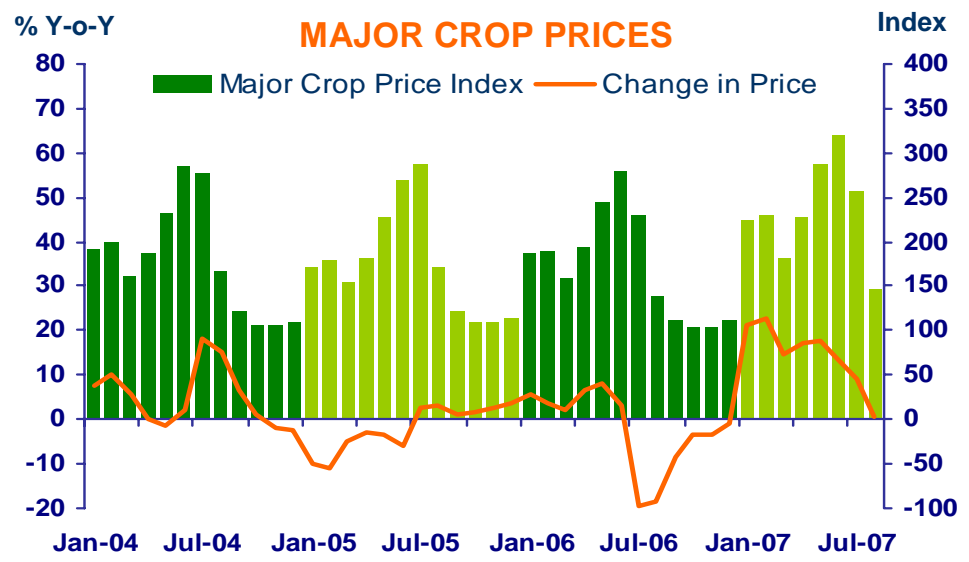
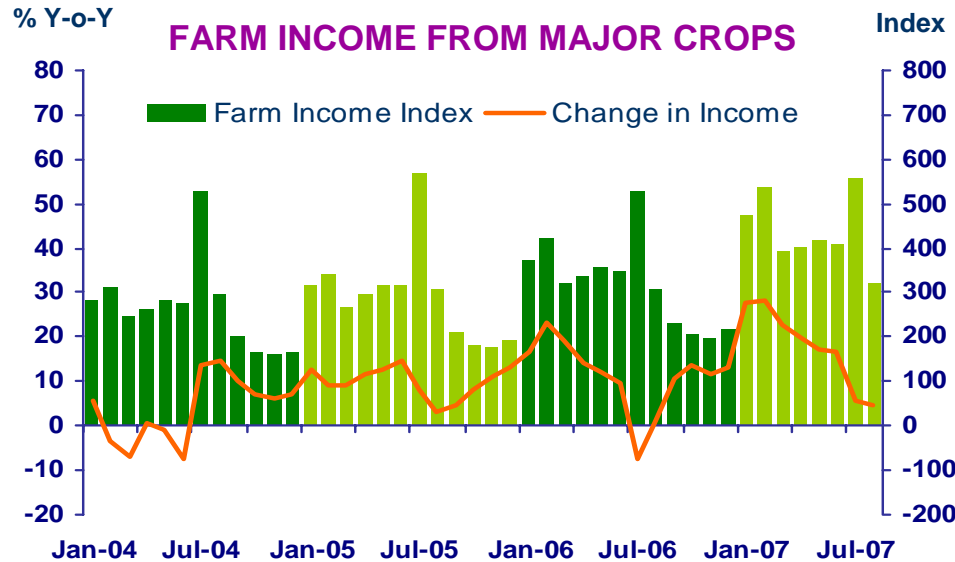


**แถลงข่าวเศรษฐกิจการเงินภาคเหนือ
เดือนสิงหาคม 2550**



FARM INCOME FROM MAJOR CROPS

Economic Research Division, Northern Region Office



CHANGE IN FARM INCOME FROM MAJOR CROPS, MAJOR CROP PRODUCTION AND MAJOR CROP PRICES

△ % (Y-O-Y)	2006	2007				
		Q1	Q2	H1	Jul	Aug
Farm Income	12.9	25.4	19.0	23.2	5.4	4.8
Production	-1.8	18.5	16.8	17.7	9.1	0.7
Price	14.7	6.9	2.2	5.5	-3.7	4.1

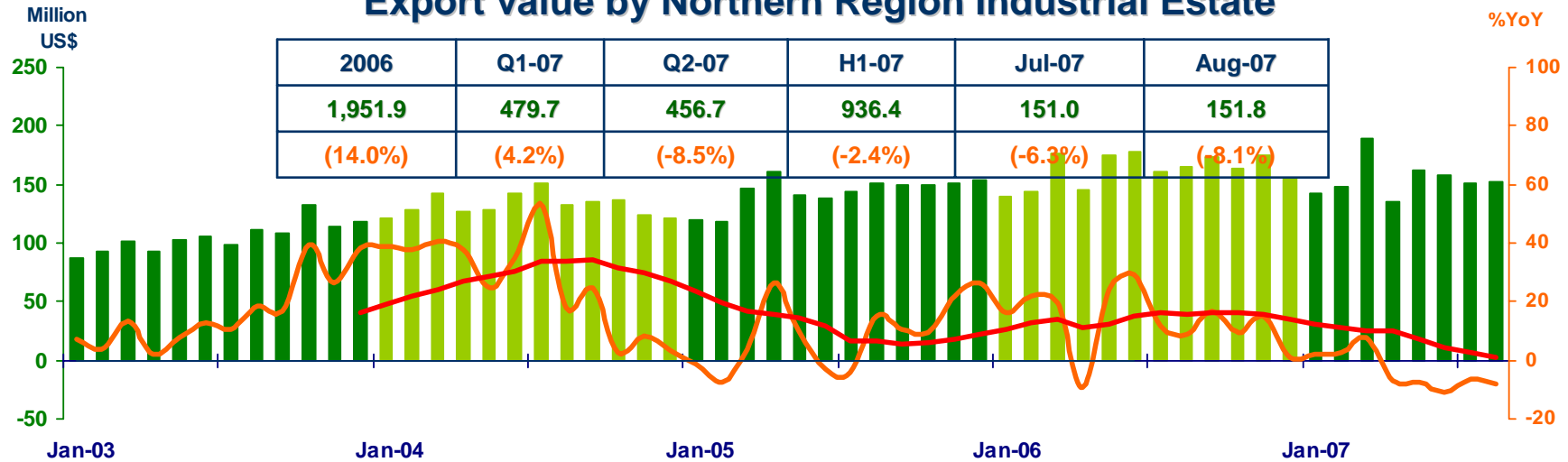
Source : Index constructed using data from Ministry of Agriculture and Co-operatives. (1988 =100)



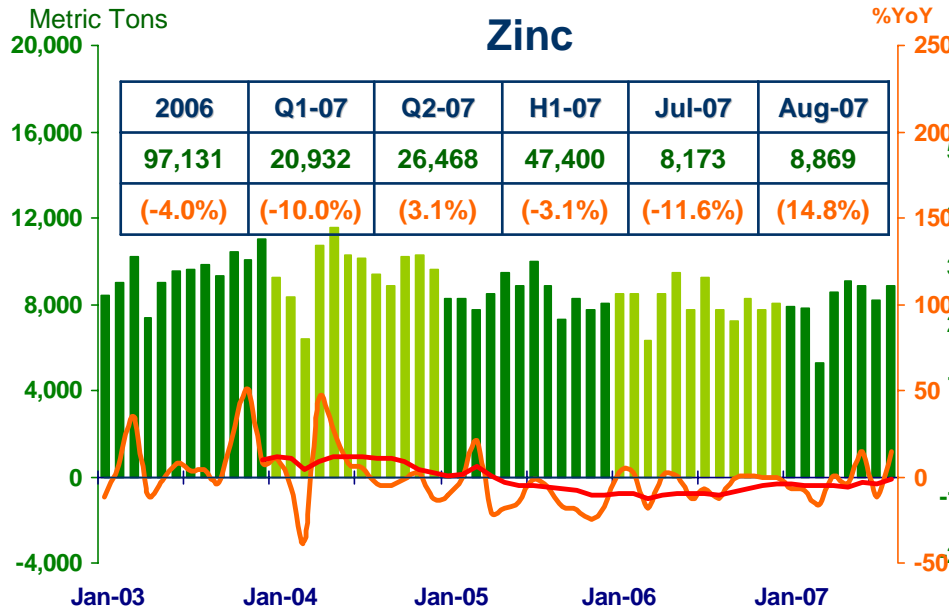
MANUFACTURING

Economic Research Division, Northern Region Office

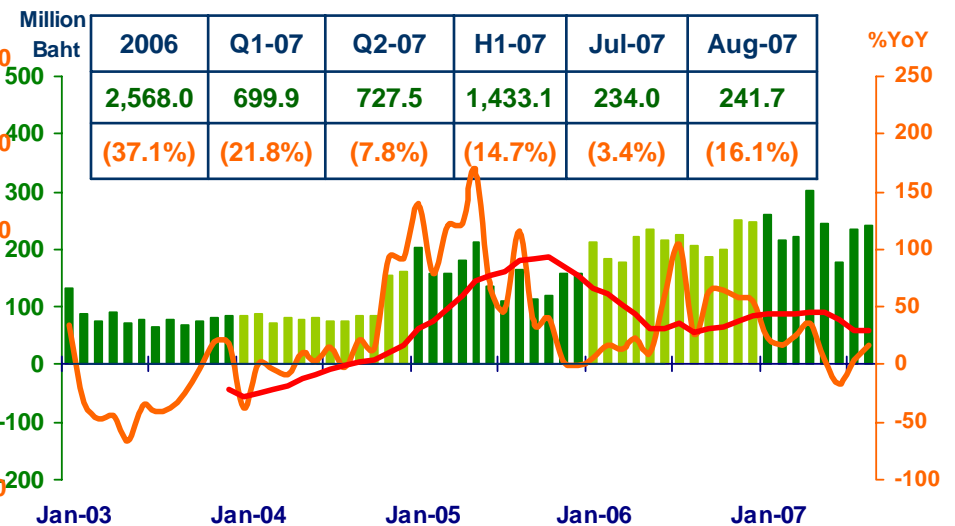
Export value by Northern Region Industrial Estate



Zinc



Vat : Manufacturing



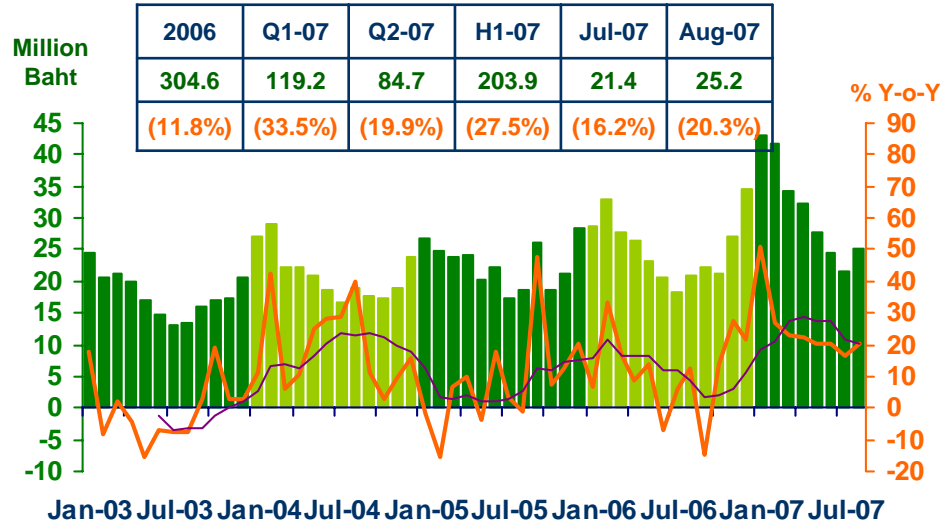
Sources: Customs Department ; Pa-Dang Industry Co., Ltd.; and Ministry of Finance



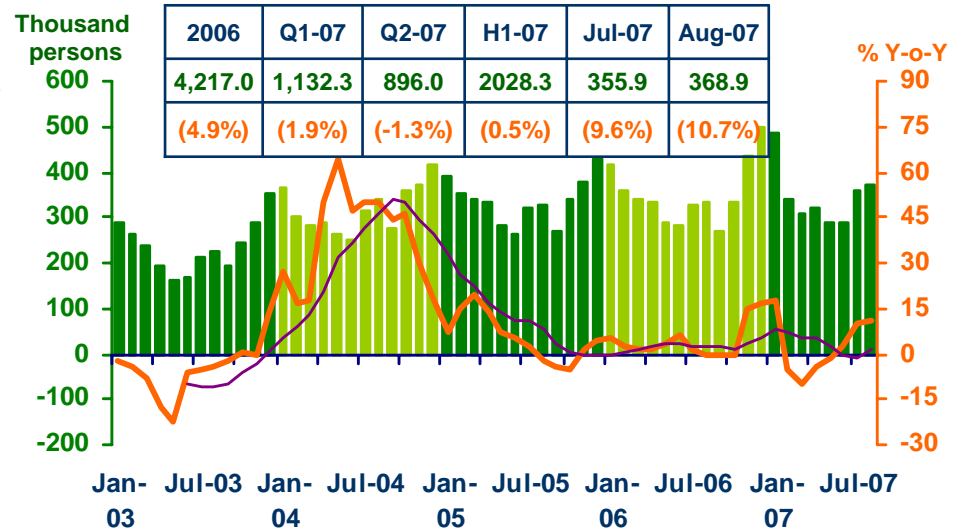
SERVICES

Economic Research Division, Northern Region Office

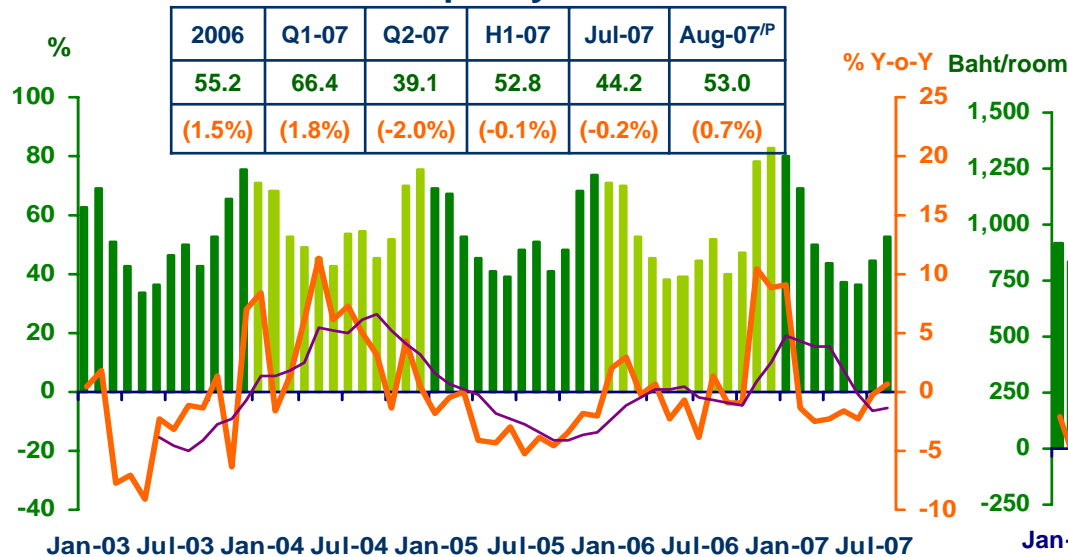
Hotel and restaurant VAT



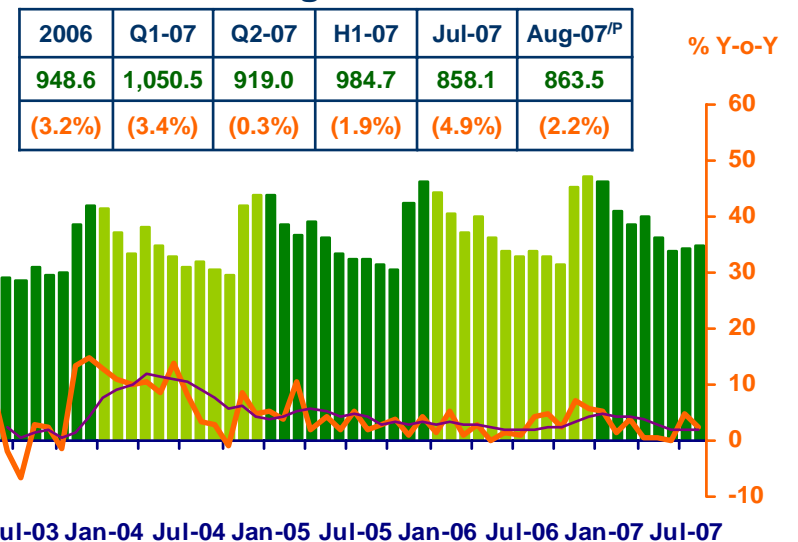
Air passengers



Hotel occupancy rate



Hotel average room rate



Sources: Ministry of Finance; Airports of Thailand Public Company Limited.; and Data Management Group, Bank of Thailand

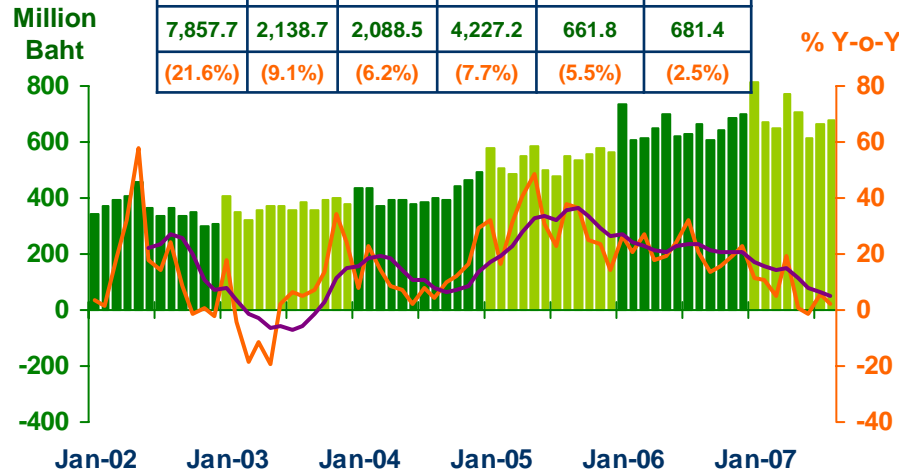


Private Consumption

Economic Research Division, Northern Region Office

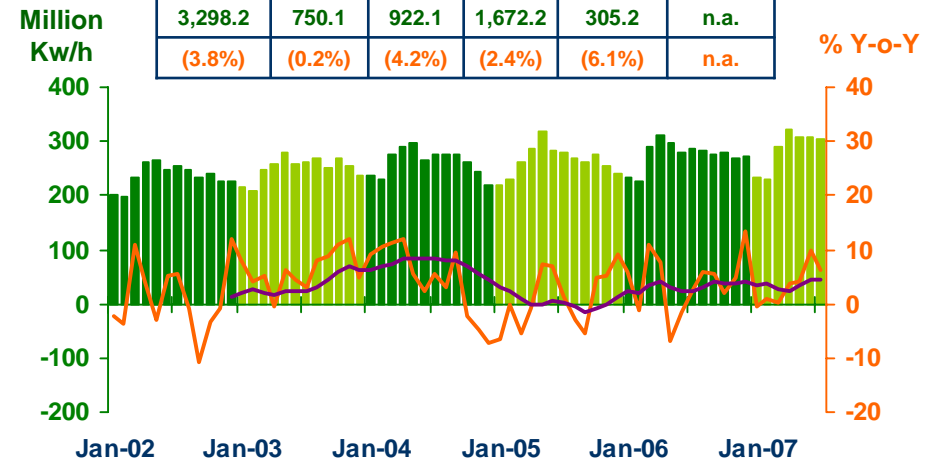
VAT

2006	Q1-07	Q2-07	H1-07	Jul-07	Aug-07p
7,857.7	2,138.7	2,088.5	4,227.2	661.8	681.4
(21.6%)	(9.1%)	(6.2%)	(7.7%)	(5.5%)	(2.5%)



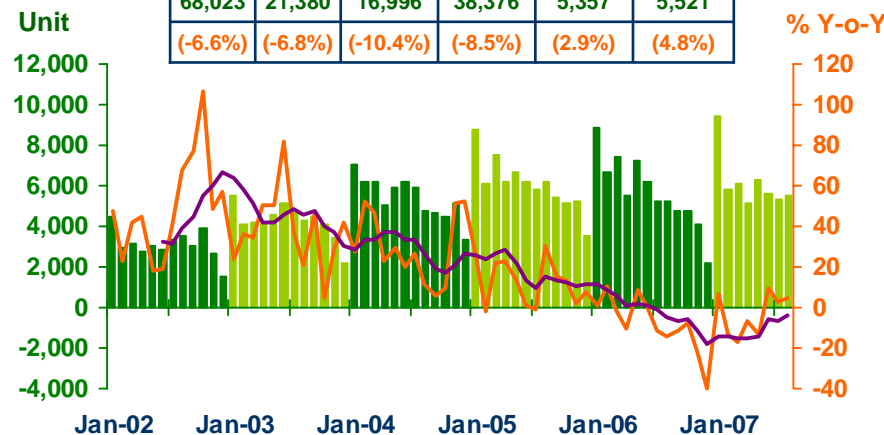
Household electricity consumption

2006	Q1-07	Q2-07/P	H1-07/P	Jul-07	Aug-07p
3,298.2	750.1	922.1	1,672.2	305.2	n.a.
(3.8%)	(0.2%)	(4.2%)	(2.4%)	(6.1%)	n.a.



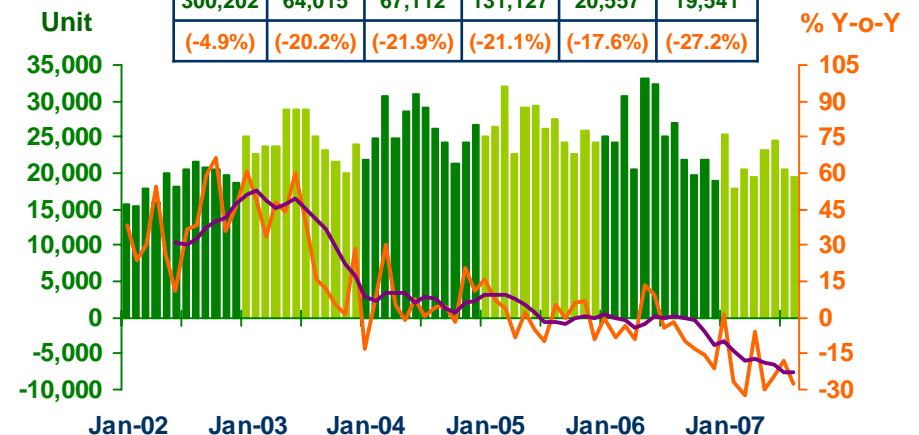
Registered passenger car and registered commercial car

2006	Q1-07	Q2-07	H1-07	Jul-07	Aug-07p
68,023	21,380	16,996	38,376	5,357	5,521
(-6.6%)	(-6.8%)	(-10.4%)	(-8.5%)	(2.9%)	(4.8%)



Registered motorcycle

2006	Q1-07	Q2-07	H1-07	Jul-07	Aug-07p
300,202	64,015	67,112	131,127	20,557	19,541
(-4.9%)	(-20.2%)	(-21.9%)	(-21.1%)	(-17.6%)	(-27.2%)



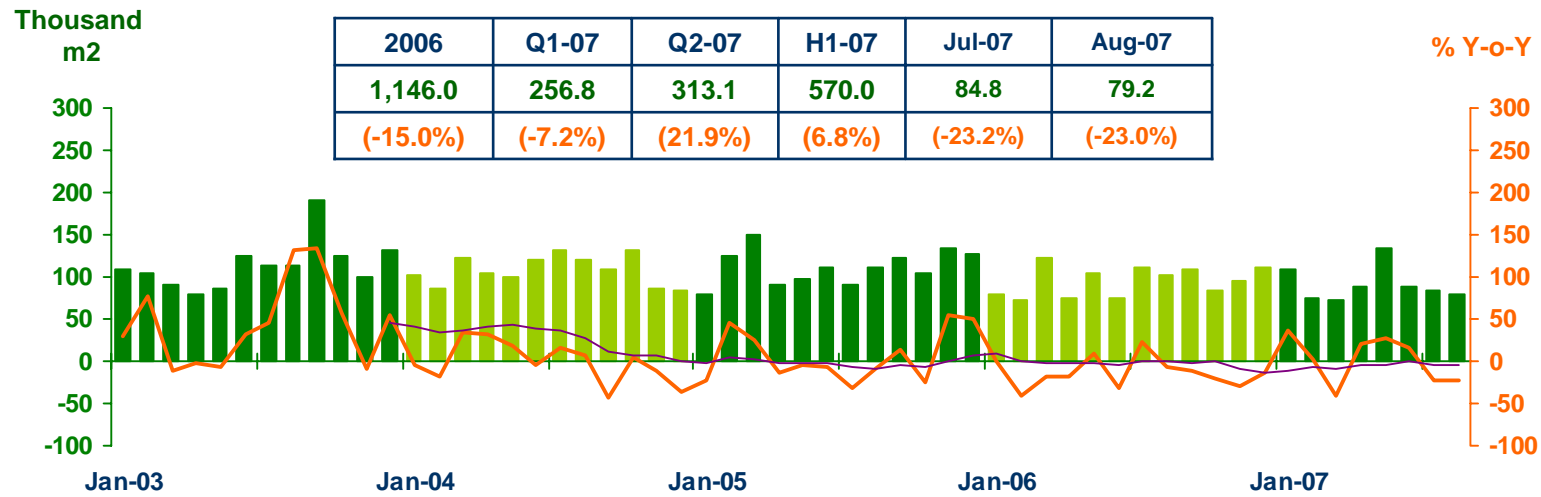
Sources: Ministry of Finance, Provincial Electricity Authority, Provincial Land Transportation Offices



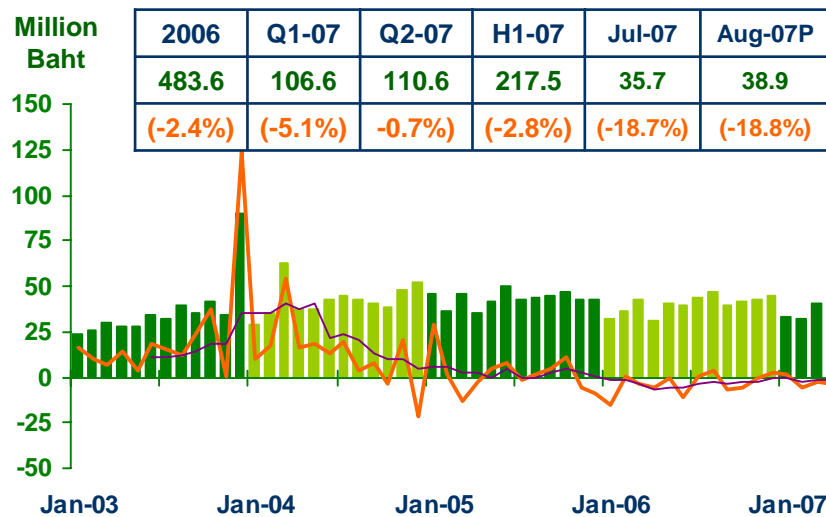
Private Investment

Economic Research Division, Northern Region Office

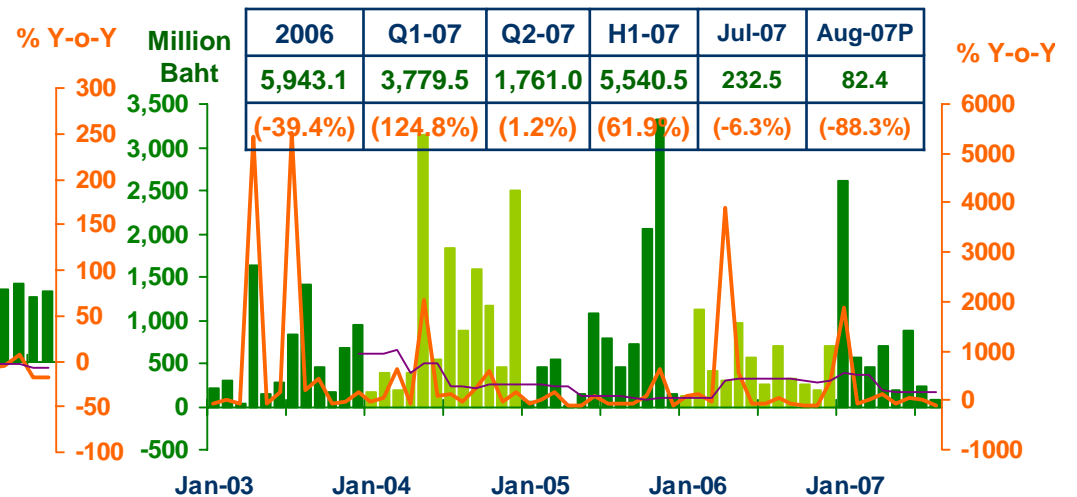
Construction Areas Permitted in Municipal Zone



Land Transaction Fee



Investment Value of Projects Approved by BOI



Sources: Municipality Offices; Provincial Land Offices; Northern Region Investment and Economic Center (BOI)

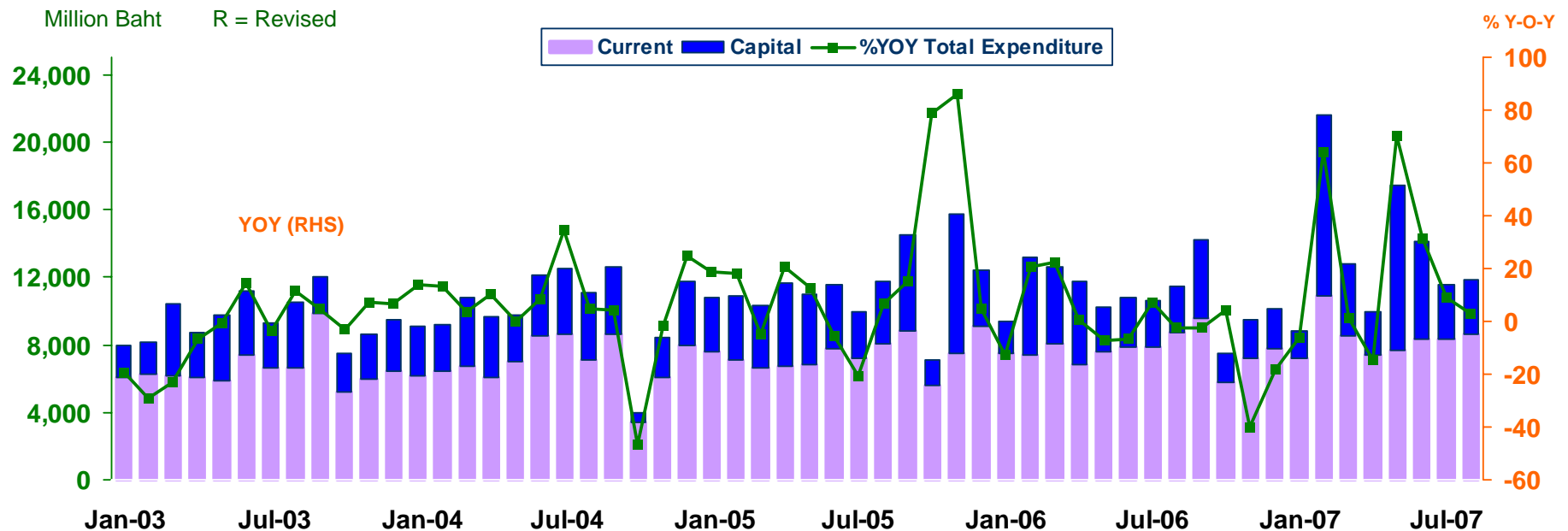


การเบิกจ่ายเงินงบประมาณผ่านคลังจังหวัดในภาคเหนือ

Economic Research Division, Northern Region Office

Expenditure

Expenditure	2549 ^R	2550				
		Q1-07 ^R	Q2-07 ^R	H1-07 ^R	July-07 ^R	Aug-07p
Current	91,977.0	26,677.2	23,289.8	49,967.0	8,343.7	8,572.0
	(3.8)	(16.8)	(4.7)	(10.9)	(5.5)	(-1.2)
Capital	39,231.8	16,549.3	18,199.6	34,748.9	3,221.9	3,249.4
	(-19.8)	(16.8)	(74.4)	(52.6)	(18.7)	(15.3)
Total	131,208.8	43,226.5	41,489.4	84,715.9	11,565.6	11,821.4
	(-4.6)	(22.9)	(27.0)	(24.9)	(8.9)	(2.8)





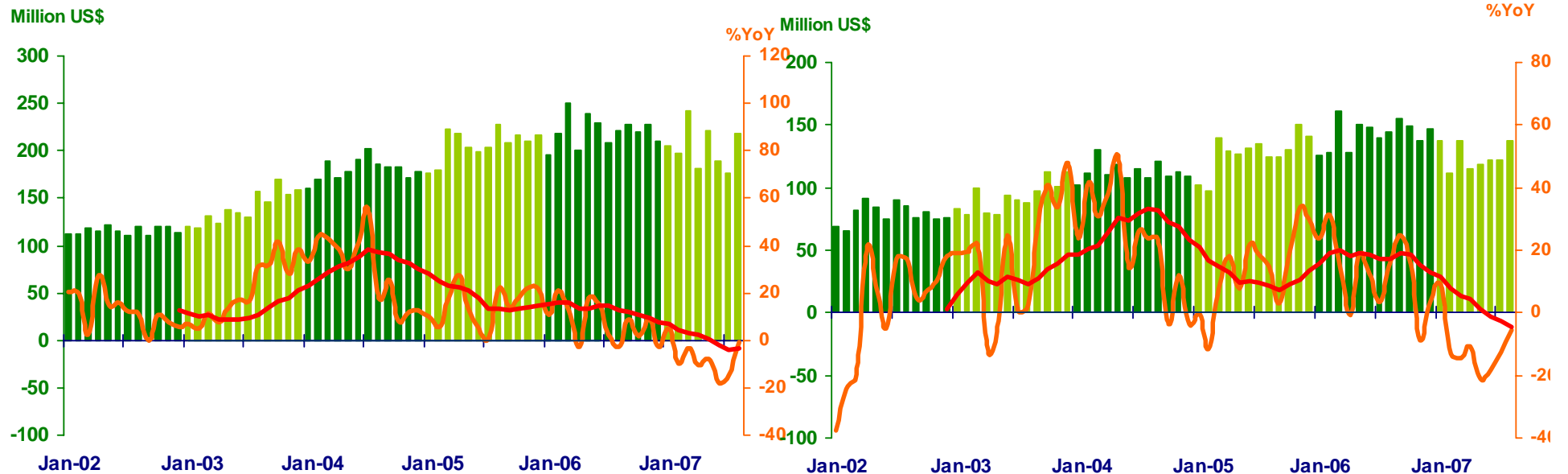
Foreign Trade

Economic Research Division, Northern Region Office

	2006	2007				
		H1	Q1	Q2	Jul	Aug
EXPORTS	2,645.6	1,235.3	645.3	590.0	177.0	218.4
	(7.2%)	(-7.4%)	(-2.8%)	(-11.9%)	(-15.0%)	(-1.1%)
IMPORTS	1,715.9	740.9	386.3	354.6	122.5	137.1
	(11.8%)	(-12.1%)	(-7.0%)	(-17.0%)	(-12.6%)	(-5.4%)
Trade Balance	932.7	494.4	259.0	235.4	54.5	81.3

Export

Import

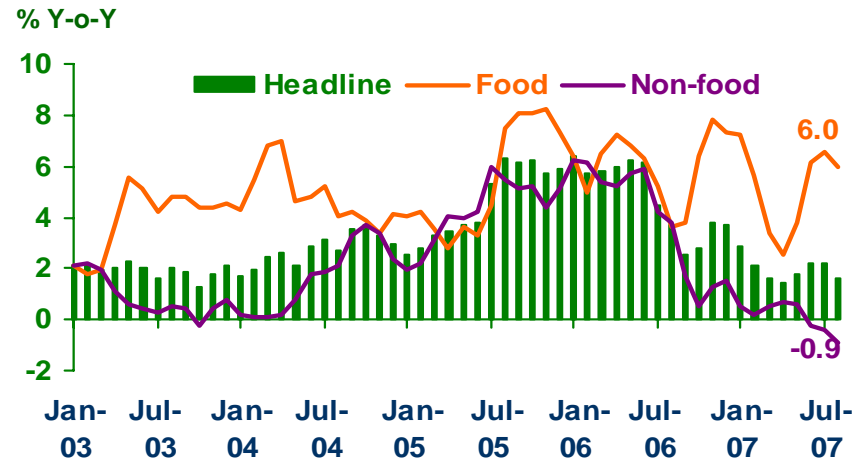




Price Level

Economic Research Division, Northern Region Office

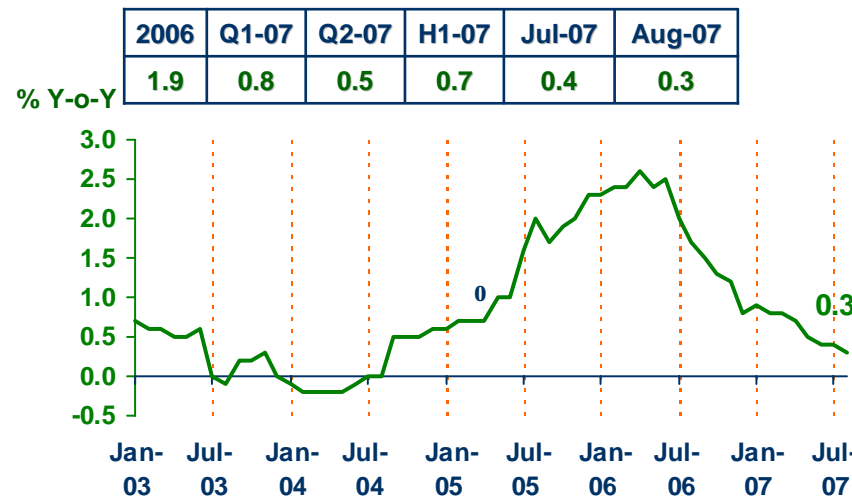
Headline Inflation



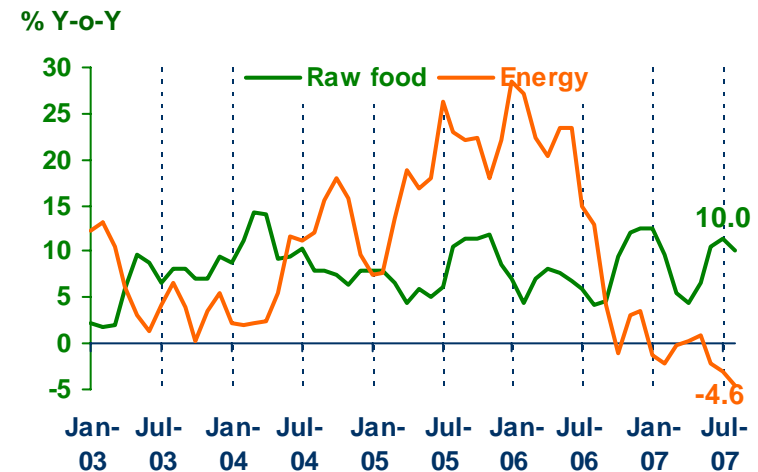
Headline inflation (2002 = 100)

%Y-o-Y	2006	Q1-07	Q2-07	H1-07	Jul-07	Aug-07
Headline	4.7	2.2	1.8	2.0	2.2	1.6
Food	6.0	5.4	4.1	4.7	6.6	6.0
Non-food	3.9	0.4	0.4	0.4	-0.4	-0.9

Core Inflation



Rawfood and Energy



Sources: Bureau of Trade and Economic Indices, Ministry of Commerce
 Note: Northern region's Core CPI data has been released since January 2002

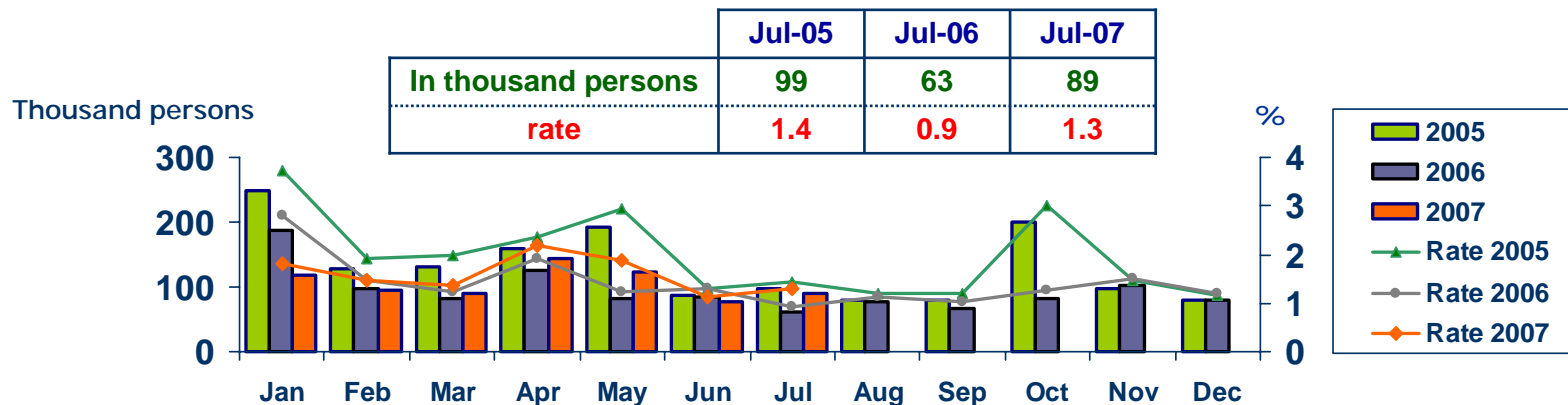


Labor Force Survey

Economic Research Division, Northern Region Office

	% of Total Labor Force (as of Jul 2007)	2006 ($\Delta\%$)	Q1-07 ($\Delta\%$)	May-07 ($\Delta\%$)	Jun-07 ($\Delta\%$)	Jul-07 ($\Delta\%$)
Labor Force (1,000 Persons)	100.0	6,741	6,534	6,549	6,756	6,810
Employed persons	98.7	0.3	0.6	-2.4	3.5	0.3
• Agriculture	51.0	4.5	-0.8	1.0	0.2	-4.9
• Non-agriculture	47.7	-4.4	1.9	-5.2	7.1	6.6
- Wholesale & retail trade	13.6	1.7	8.7	-5.6	3.5	10.9
- Manufacturing	10.5	-3.5	-6.0	-4.1	14.2	-3.0
- Construction	6.1	-18.7	-16.4	-21.4	13.5	7.9
- Hotel & restaurants Services	4.9	-15.1	20.4	-1.2	-3.7	8.9
- Others	12.6	-0.6	8.3	1.2	6.7	9.4
Unemployed persons	1.3	1.2	10.0	52.1	-10.2	42.0
Seasonally inactive persons	0.0	236.1	-49.5	64.3	93.9	-88.6

Unemployment



Source : National Statistical Office



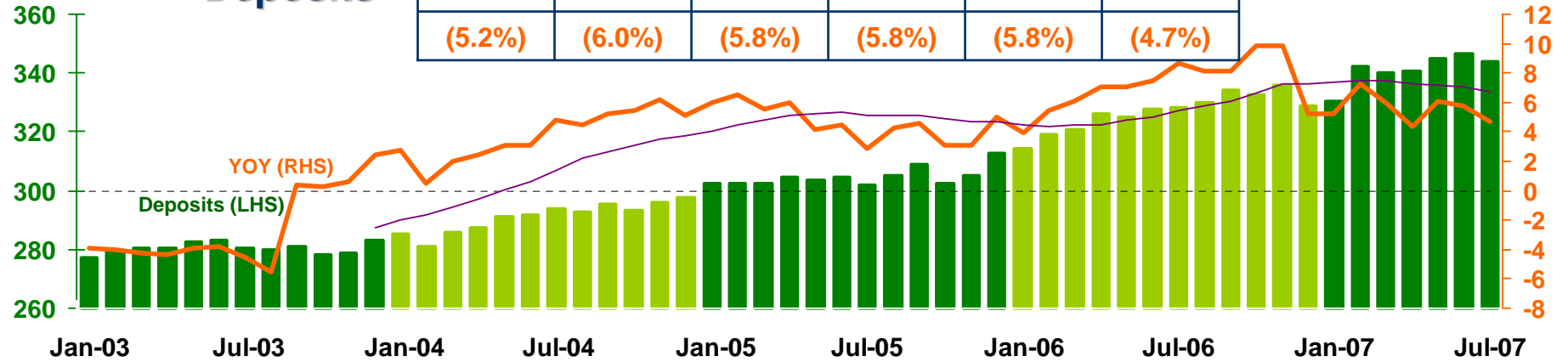
DEPOSITS AND CREDITS OF COMMERCIAL BANKS

Economic Research Division, Northern Region Office

Billion Baht

Deposits

2006	Q1-07	Q2-07	H1-07	Jun-07	Jul-07
328.7	339.9	346.4	346.4	346.4	343.6
(5.2%)	(6.0%)	(5.8%)	(5.8%)	(5.8%)	(4.7%)



Billion Baht

Credits

2006	Q1-07	Q2-07	H1-07	Jun-07	Jul-07
274.5	277.2	280.1	280.1	280.1	277.2
(9.7%)	(8.5%)	(8.3%)	(8.3%)	(8.3%)	(6.9%)

