

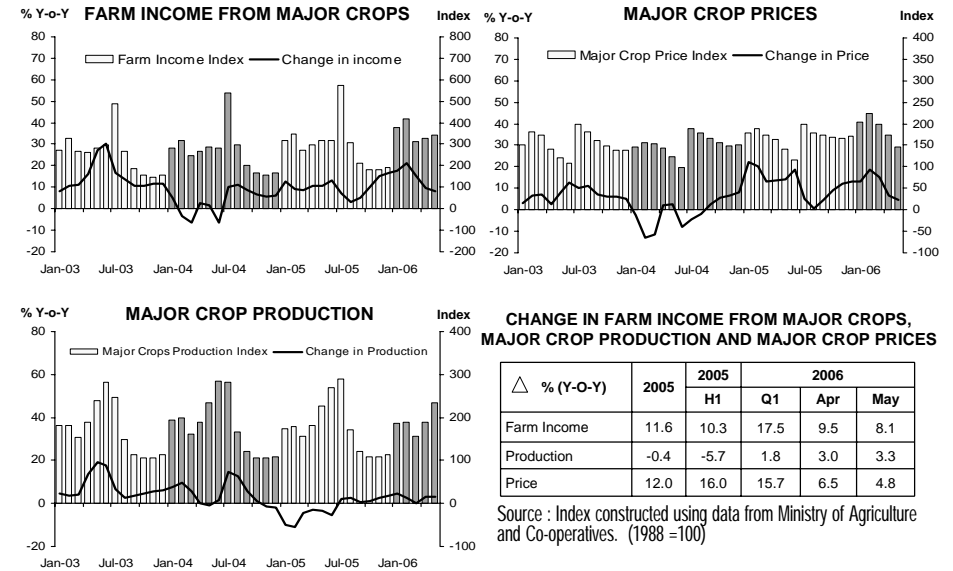


# แถลงข่าวเศรษฐกิจการเงินภาคเหนือ เดือนพฤษภาคม 2549

Economic Research Division, Northern Region Office



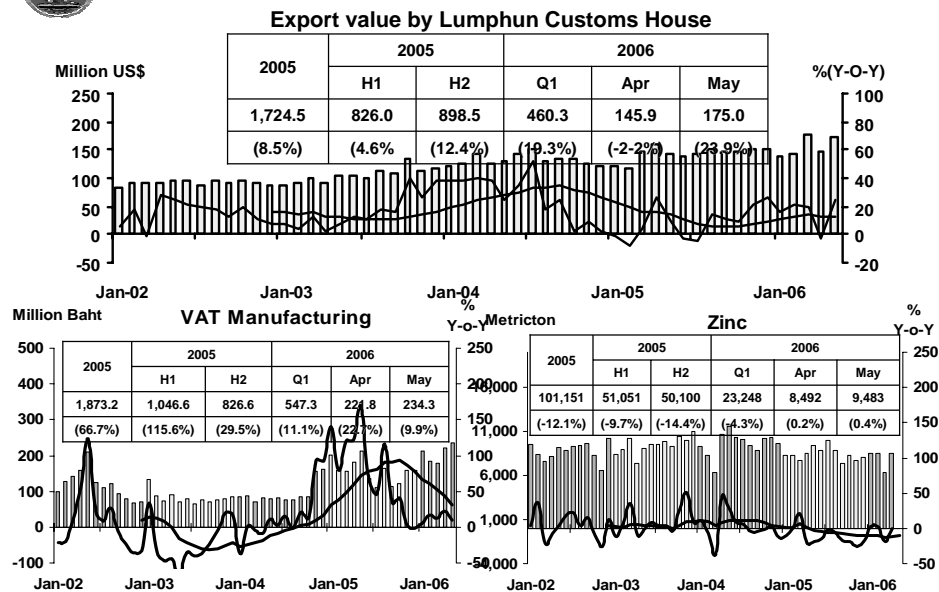
## FARM INCOME FROM MAJOR CROPS



Economic Research Division, Northern Region Office



## MANUFACTURING

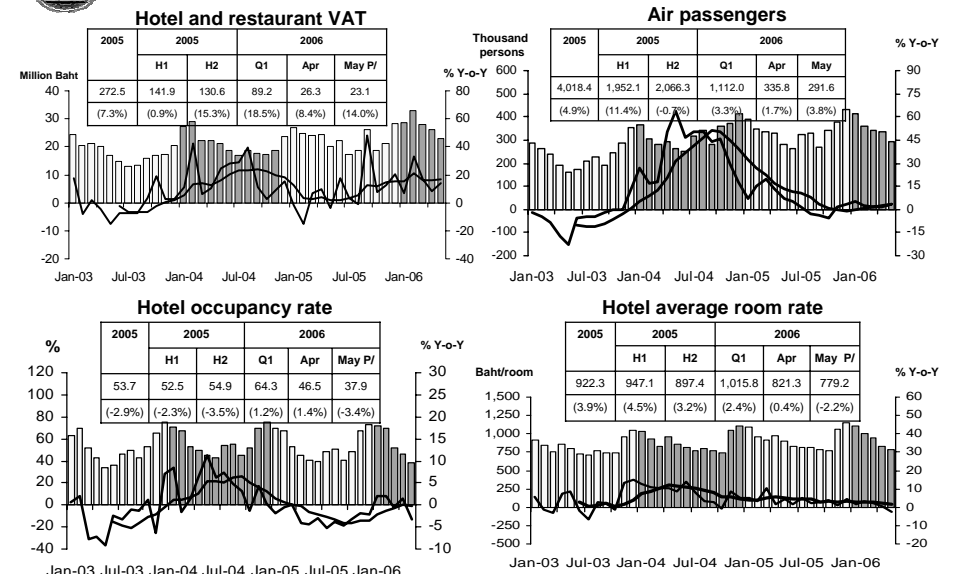


Sources: Pa-Dang Industry Co.,Ltd. ;Lumphun Customs House. and Revenue Department.

Economic Research Division, Northern Region Office



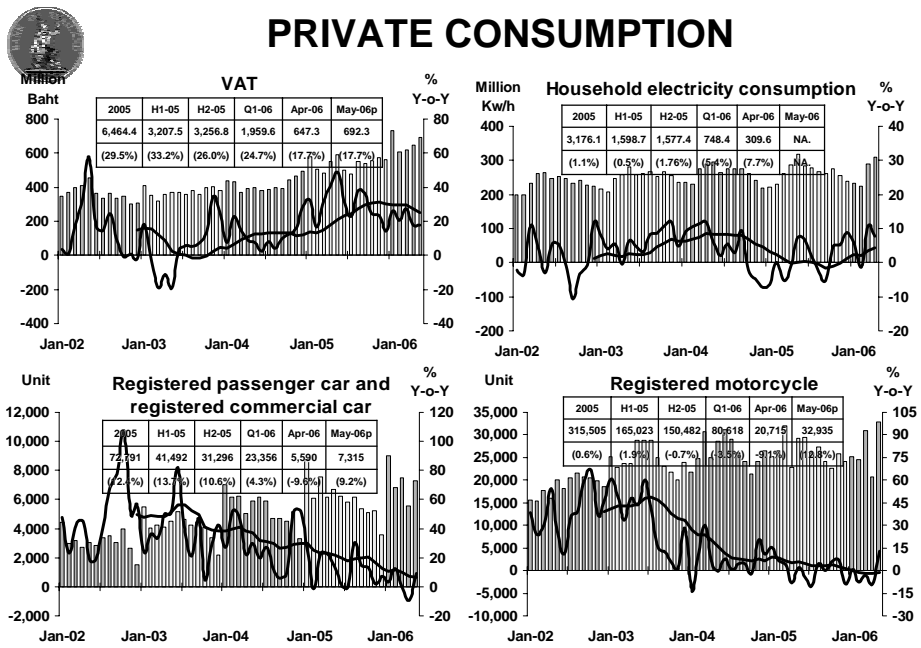
## SERVICES



Source: Ministry of Finance, Airports of Thailand Public Company Limited., and Data Management Group

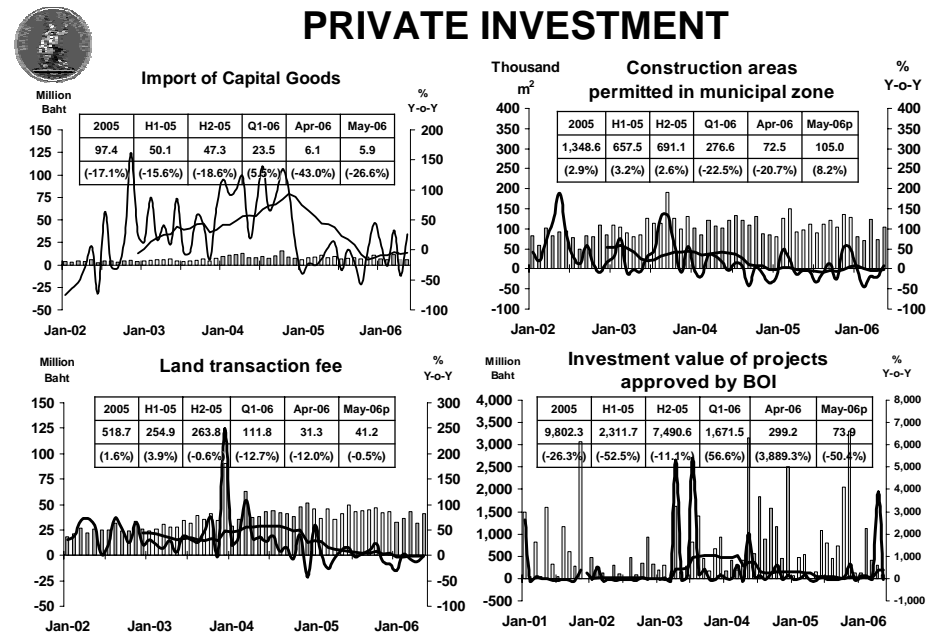
Economic Research Division, Northern Region Office

# PRIVATE CONSUMPTION



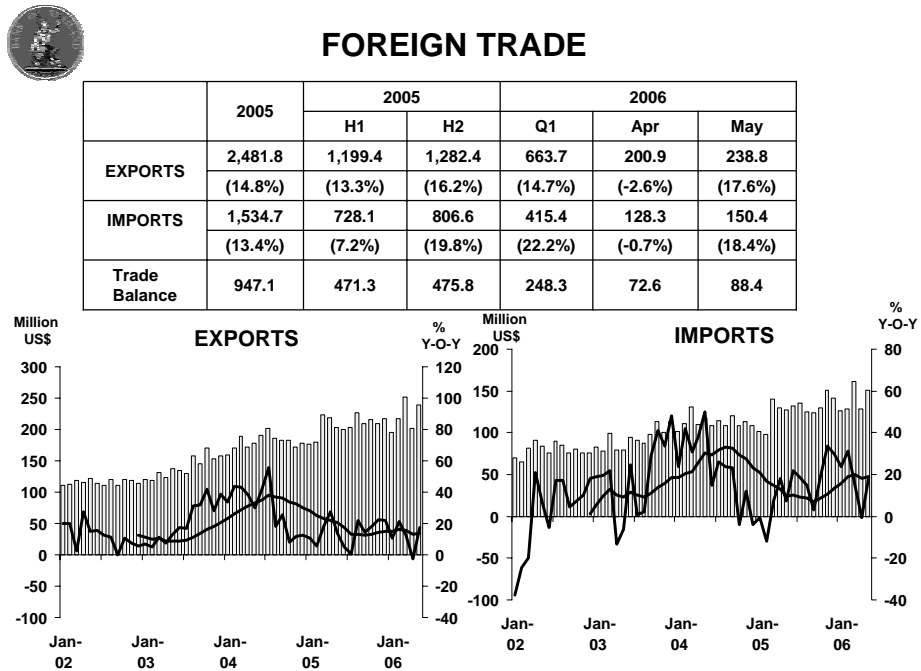
Sources: Ministry of Finance, Provincial Electricity Authority, Provincial Land Transportation Offices  
Economic Research Division, Northern Region Office

# PRIVATE INVESTMENT



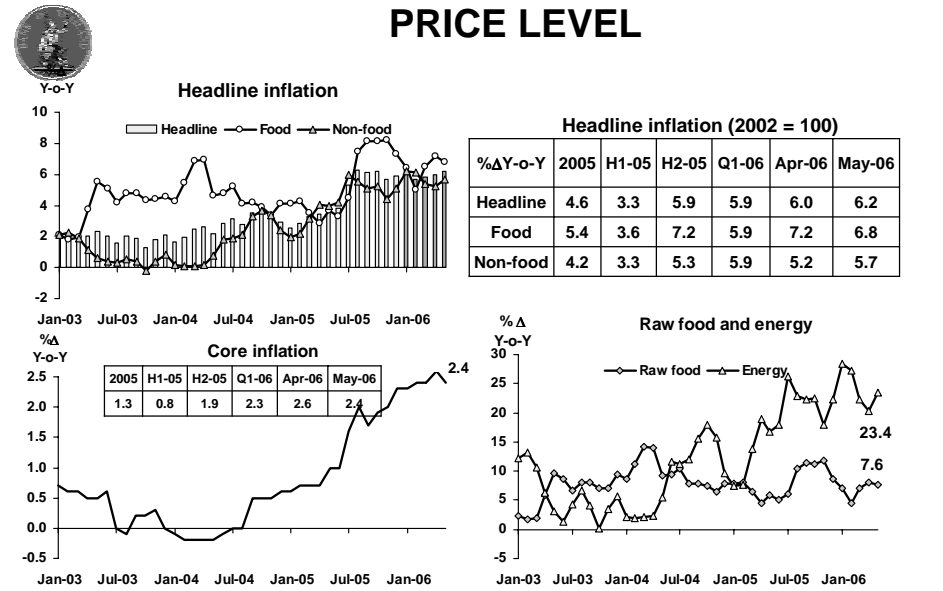
Sources: Municipality Offices; Provincial Land Offices; Customs Department; Northern Region Investment and Economic Center (BOI)  
Economic Research Division, Northern Region Office

# FOREIGN TRADE



Economic Research Division, Northern Region Office

# PRICE LEVEL



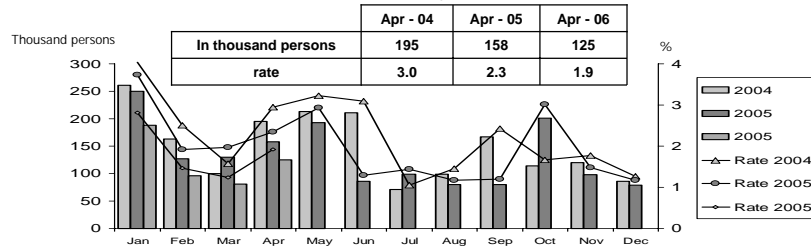
Sources: Bureau of Trade and Economic Indices, Ministry of Commerce  
Note: Northern region's Core CPI data has been released since January 2002

Economic Research Division, Northern Region Office

### Labor Force Survey

	% of Total Labour Force (as of Apr 2006)	2004 (Δ%)	2005 (Δ%)	H1-05 (Δ%)	Q3-05 (Δ%)	Mar-06 (Δ%)	Apr-06 (Δ%)
<b>Labor Force (1,000 Persons)</b>	<b>100.0</b>	<b>6,787</b>	<b>6,705</b>	<b>6,638</b>	<b>6,660</b>	<b>6,520</b>	<b>6,529</b>
<b>Employed persons</b>	<b>97.2</b>	<b>3.6</b>	<b>-0.7</b>	<b>-1.6</b>	<b>-2.3</b>	<b>-0.5</b>	<b>-1.7</b>
• Agriculture	45.6	-3.8	0.5	-6.9	-0.2	5.6	9.0
• Non-agriculture	51.6	13.0	-2.1	4.1	-4.4	-5.3	-9.5
- Wholesale & retail trade	15.2	26.2	-4.2	-7.5	-5.6	-6.0	-4.9
- Manufacturing	10.6	16.6	-14.5	-14.7	-15.3	-9.3	-10.1
- Construction	8.1	4.5	8.2	34.1	-9.3	8.8	-0.3
- Hotel & restaurants	5.0	-2.5	9.0	83.4	28.5	-13.1	-15.7
Services	12.7	8.8	2.0	4.2	-1.1	-6.1	-16.5
Unemployed persons	1.9	-6.5	-7.7	-59.3	-52.1	-37.9	-20.7
Seasonally inactive persons	0.9	-4.0	-81.9	156.9	91.7	-28.7	-48.7

### Unemployment

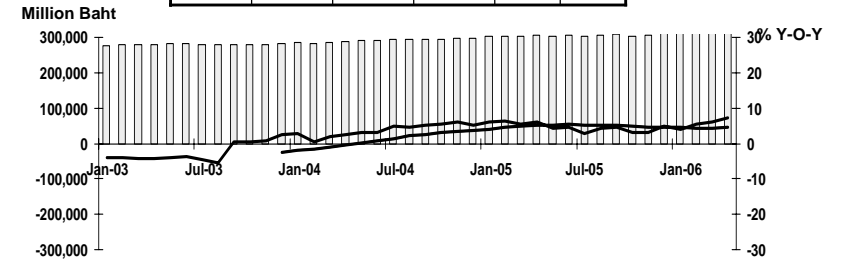


Economic Research Division, Northern Region Office

### DEPOSITS AND CREDITS OF COMMERCIAL BANKS

2005	H1-05	H2-05	Q1-06	Mar-06	Apr-06
312,509	302,318	312,509	320,860	320,860	326,127
(5.0%)	(5.5%)	(5.0%)	(6.1%)	(6.1%)	(7.1%)

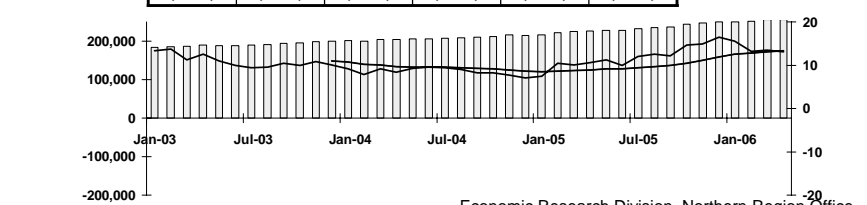
### Deposits



### Credits

2005	H1-05	H2-05	Q1-06	Mar-06	Apr-06
250,244	227,325	250,244	255,412	255,412	256,328
(16.5%)	(10.0%)	(16.5%)	(13.5%)	(13.5%)	(13.1%)

### Million Baht



Economic Research Division, Northern Region Office