

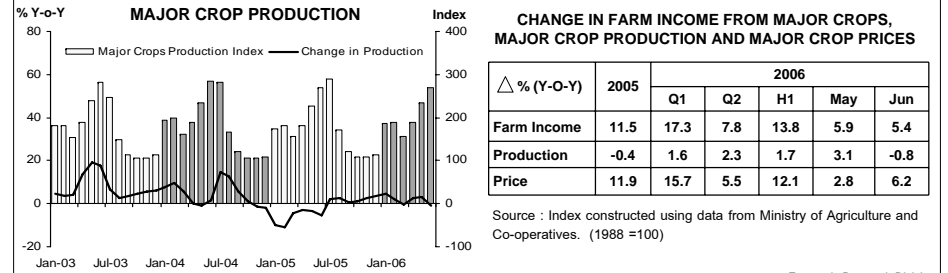
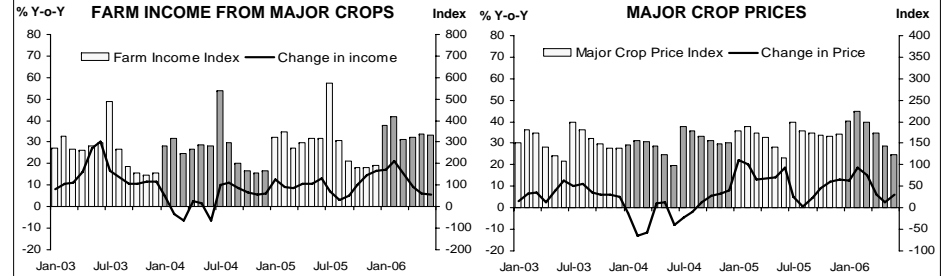


แถลงข่าวเศรษฐกิจและการเงินภาคเหนือ เดือนมิถุนายน 2549 และครึ่งแรกปี 2549

ธนาคารแห่งประเทศไทย สำนักงานภาคเหนือ

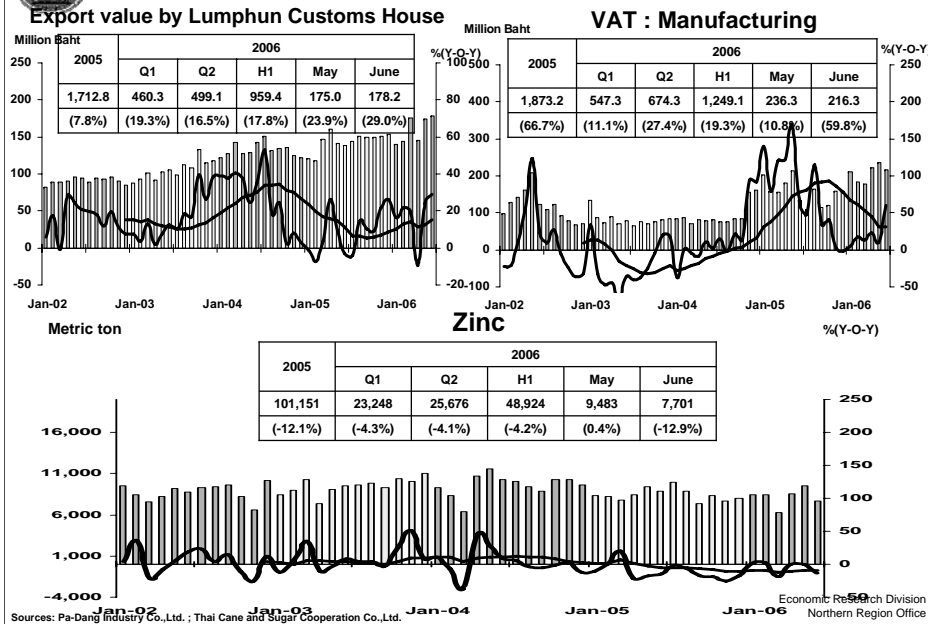


FARM INCOME FROM MAJOR CROPS



Economic Research Division
Northern Region Office

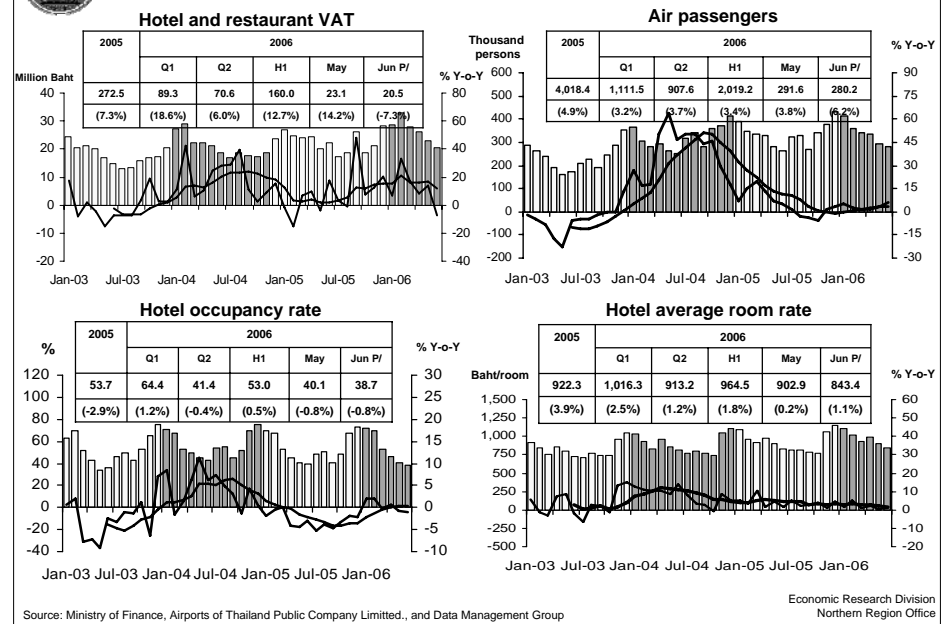
MANUFACTURING



Economic Research Division
Northern Region Office

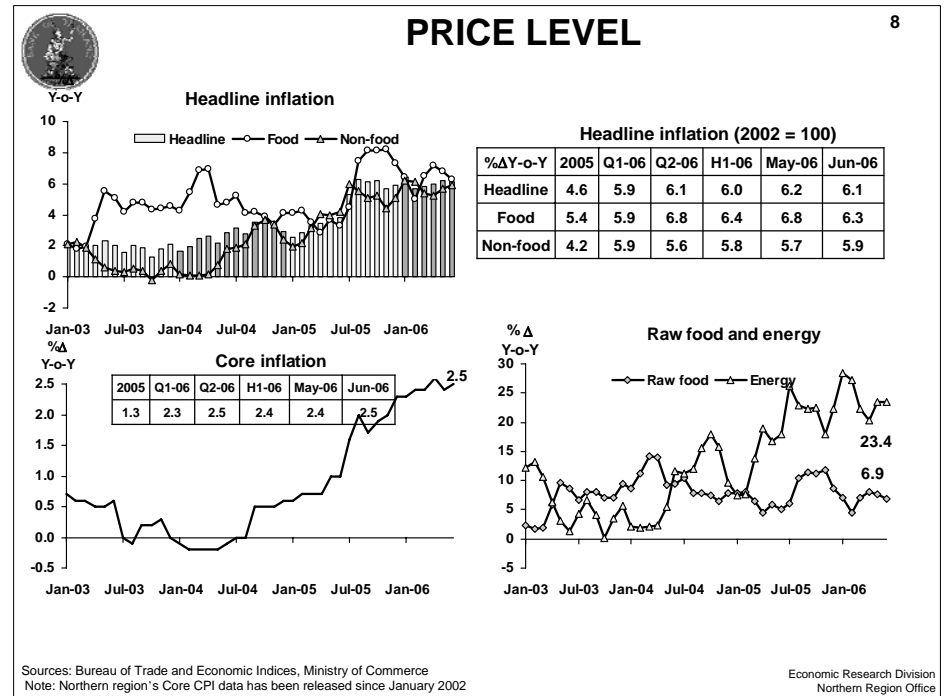
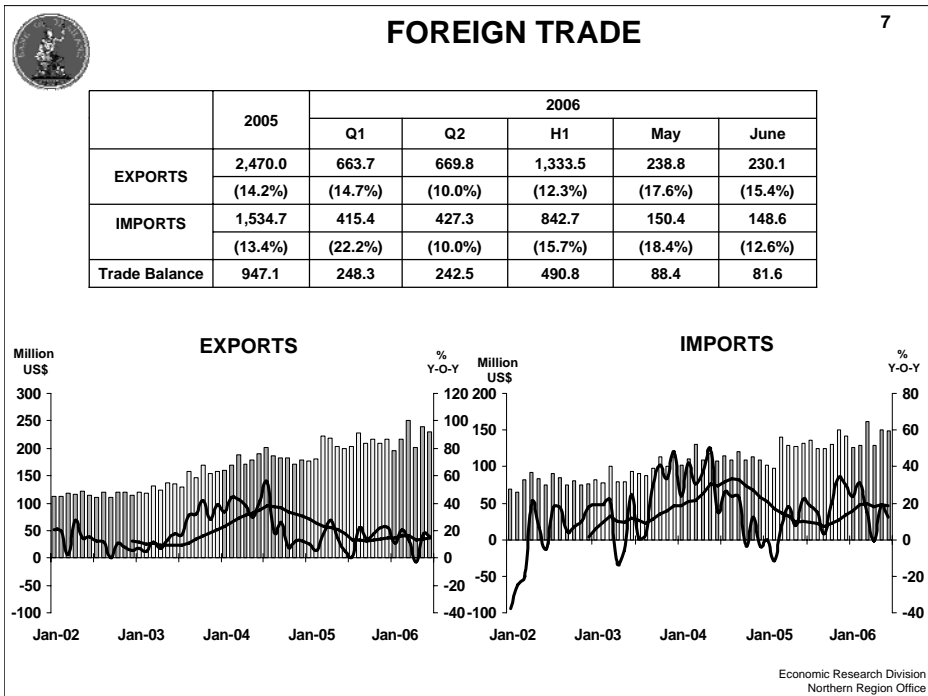
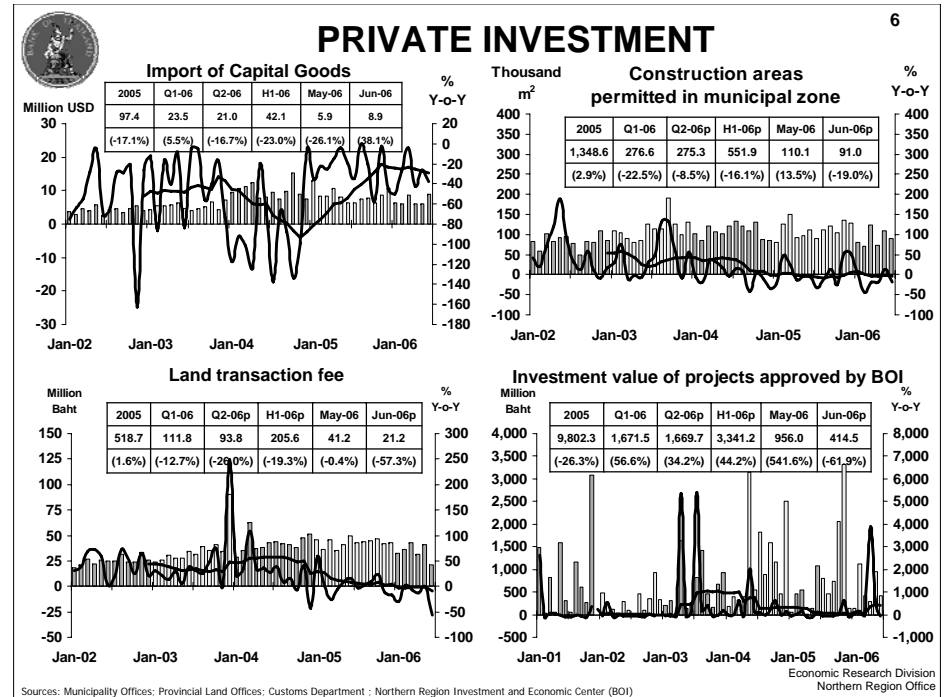
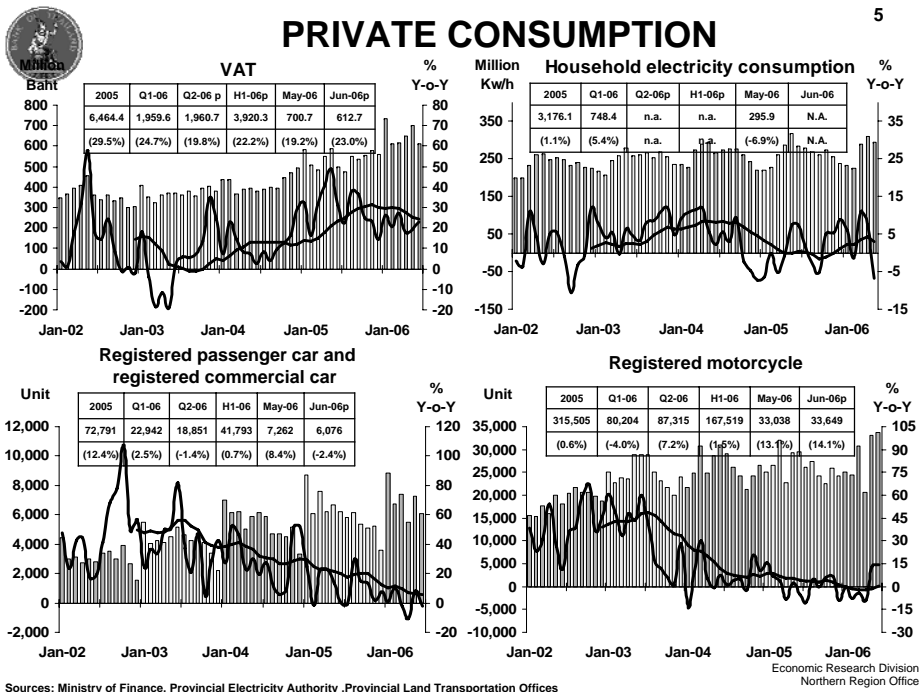
Sources: Pa-Dang Industry Co.,Ltd.; Thai Cane and Sugar Cooperation Co.,Ltd.

SERVICES



Economic Research Division
Northern Region Office

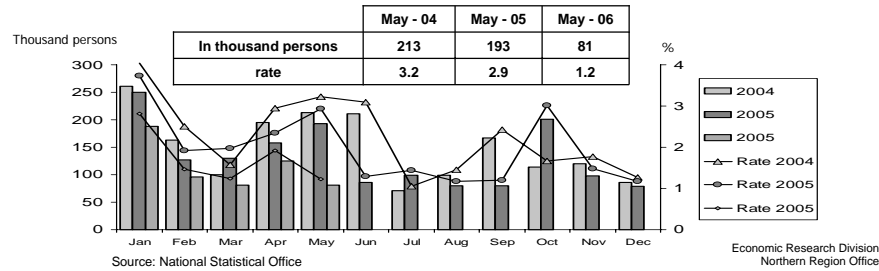
Sources: Ministry of Finance, Airports of Thailand Public Company Limited., and Data Management Group



Labor Force Survey

	% of Total Labour Force (as of May 2006)	2005 (Δ%)	H1-05 (Δ%)	Q1-06 (Δ%)	Apr-06 (Δ%)	May-06 (Δ%)
Labor Force (1,000 Persons)	100.0	6,705	6,638	6,520	6,529	6,639
Employed persons	98.3	-0.7	-1.6	-0.5	-1.7	3.0
• Agriculture	44.4	0.5	-6.9	5.6	9.0	10.6
• Non-agriculture	53.9	-2.1	4.1	-5.3	-9.5	-2.5
- Wholesale & retail trade	14.7	-4.2	-7.5	-6.0	-4.9	4.6
- Manufacturing	11.2	-14.5	-14.7	-9.3	-10.1	-7.6
- Construction	7.5	8.2	34.1	8.8	-0.3	-14.0
- Hotel & restaurants Services	5.6	9.0	83.4	-13.1	-15.7	-4.1
- Others	14.9	2.0	4.2	-6.1	-16.5	2.2
Unemployed persons	1.2	-7.7	-59.3	-37.9	-20.7	-58.0
Seasonally inactive persons	0.5	-81.9	156.9	-28.7	-48.7	-32.3

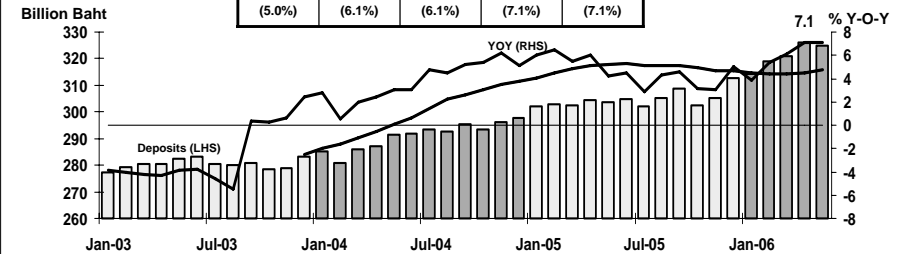
Unemployment



DEPOSITS AND CREDITS OF COMMERCIAL BANKS

Deposits

Billion Baht				
2005	Q1-06	Mar-06	Apr-06	May-06
312.5	320.9	320.8	326.1	325.0
(5.0%)	(6.1%)	(6.1%)	(7.1%)	(7.1%)



Credits

Billion Baht				
2005	Q1-06	Mar-06	Apr-06	May-06
250.2	255.4	255.4	256.3	256.6
(16.5%)	(13.5%)	(13.5%)	(13.1%)	(12.2%)

