

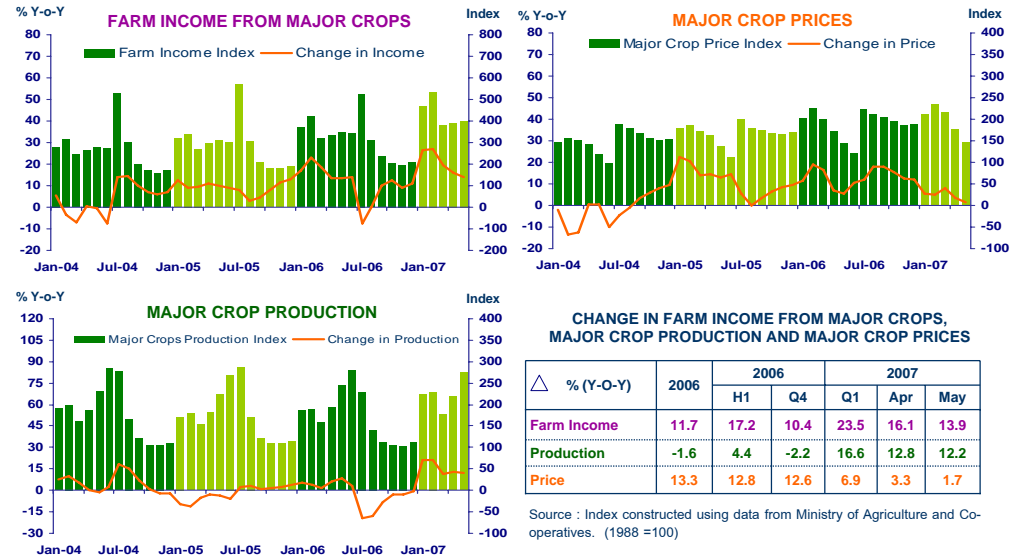


# แถลงข่าวเศรษฐกิจการเงินภาคเหนือ เดือนพฤษภาคม 2550



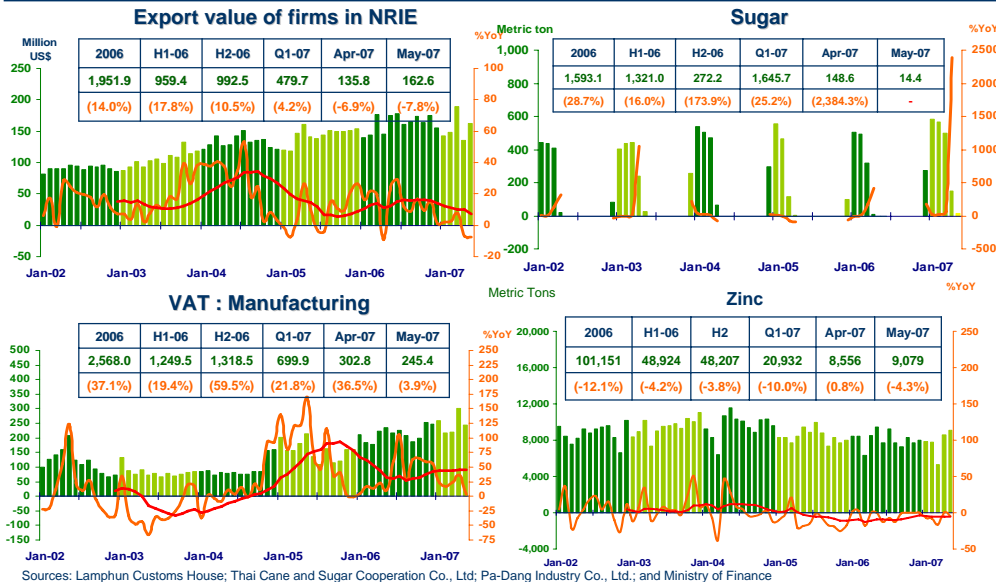
## FARM INCOME FROM MAJOR CROPS

Economic Research Division, Northern Region Office



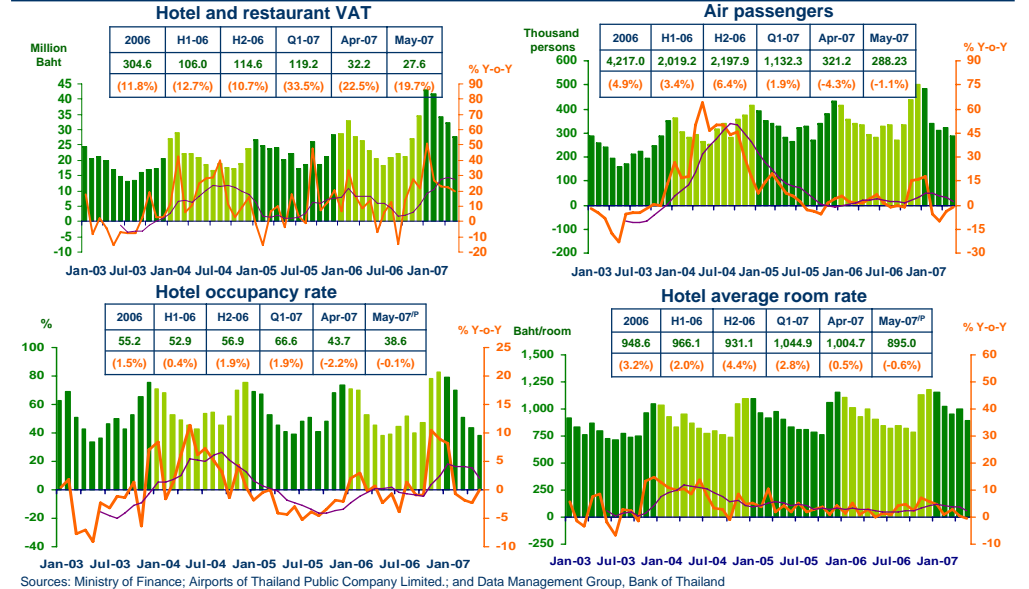
## MANUFACTURING

Economic Research Division, Northern Region Office



## SERVICES

Economic Research Division, Northern Region Office



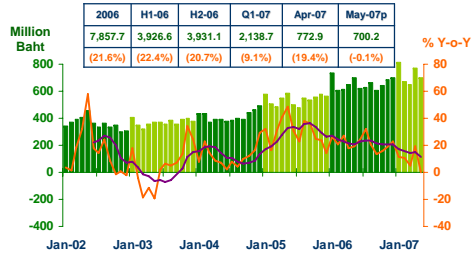


# Private Consumption

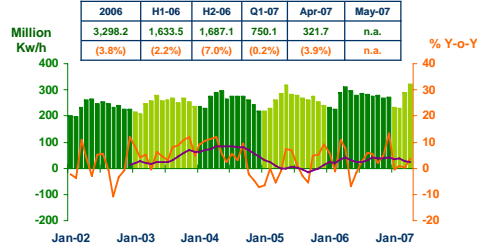
5

Economic Research Division, Northern Region Office

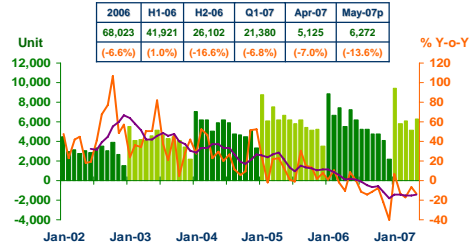
## VAT



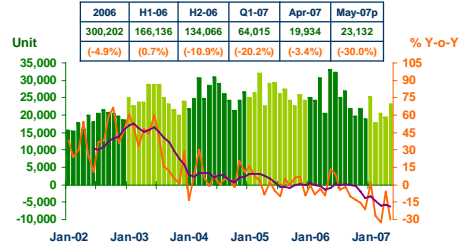
## Household electricity consumption



## Registered passenger car and registered commercial car



## Registered motorcycle



Sources: Ministry of Finance, Provincial Electricity Authority, Provincial Land Transportation Offices

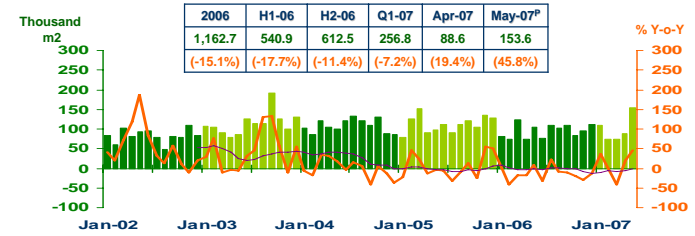


# Private Investment

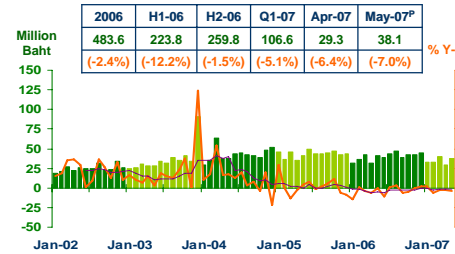
6

Economic Research Division, Northern Region Office

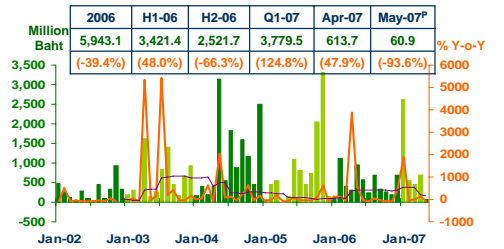
## Construction Areas Permitted in Municipal Zone



## Land Transaction Fee



## Investment Value of Projects Approved by BOI



Sources: Municipality Offices; Provincial Land Offices; Customs Department; Northern Region Investment and Economic Center (BOI)



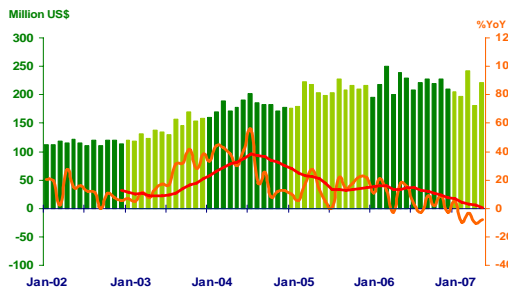
# Foreign Trade

7

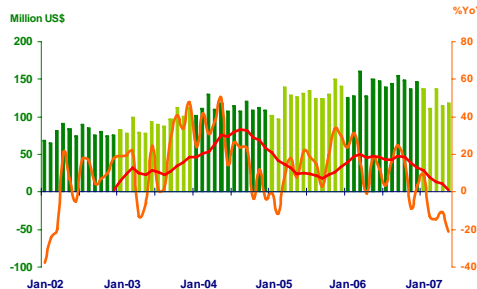
Economic Research Division, Northern Region Office

|               | 2006    | 2006    |         | 2007    |          |          |
|---------------|---------|---------|---------|---------|----------|----------|
|               |         | H1      | H2      | Q1      | Apr      | May      |
| EXPORTS       | 2,645.6 | 1,333.5 | 1,315.1 | 645.3   | 180.4    | 220.7    |
|               | (7.2%)  | (12.3%) | (2.5%)  | (-2.8%) | (-10.2%) | (-7.6%)  |
| IMPORTS       | 1,715.9 | 842.7   | 873.2   | 386.3   | 114.8    | 118.3    |
|               | (11.8%) | (15.7%) | (8.3%)  | (-7.0%) | (-10.6%) | (-21.3%) |
| Trade Balance | 932.7   | 490.8   | 441.8   | 259.0   | 65.6     | 102.4    |

## Export



## Import



Source: Customs Department

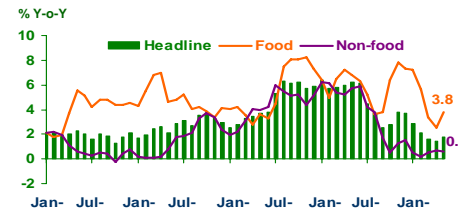


# Price Level

8

Economic Research Division, Northern Region Office

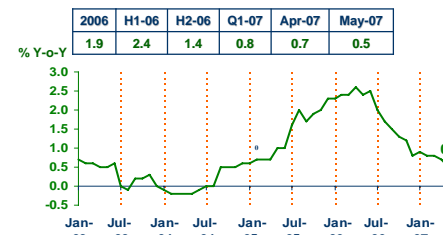
## Headline Inflation



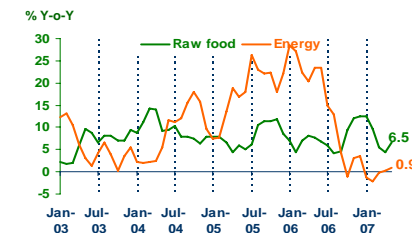
## Headline inflation (2002 = 100)

| %Y-o-Y   | 2006 | H1-06 | H2-06 | Q1-07 | Apr-07 | May-07 |
|----------|------|-------|-------|-------|--------|--------|
| Headline | 4.7  | 6.0   | 3.5   | 2.2   | 1.4    | 1.8    |
| Food     | 6.0  | 6.4   | 5.7   | 5.4   | 2.5    | 3.8    |
| Non-food | 3.9  | 5.8   | 2.2   | 0.4   | 0.7    | 0.6    |

## Core Inflation



## Rawfood and Energy



Sources: Bureau of Trade and Economic Indices, Ministry of Commerce  
Note: Northern region's Core CPI data has been released since January 2002

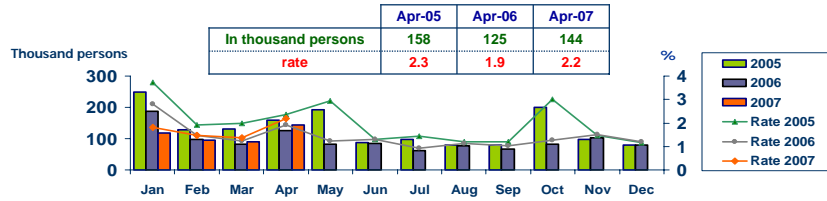


# Labor Force Survey

Economic Research Division, Northern Region Office

|                                    | % of Total Labor Force<br>(as of Apr 2007) | 2006<br>(Δ%) | Q1-06<br>(Δ%) | Q2-06<br>(Δ%) | Q3-06<br>(Δ%) | Mar-07<br>(Δ%) | Apr-07<br>(Δ%) |
|------------------------------------|--|--------------|---------------|---------------|---------------|----------------|----------------|
| <b>Labor Force (1,000 Persons)</b> | <b>100.0</b>                               | <b>6,741</b> | <b>6,520</b>  | <b>6,526</b>  | <b>6,503</b>  | <b>6,534</b>   | <b>6,617</b>   |
| <b>Employed persons</b>            | <b>97.0</b>                                | <b>0.3</b>   | <b>-0.5</b>   | <b>-1.4</b>   | <b>-2.2</b>   | <b>0.6</b>     | <b>1.1</b>     |
| • Agriculture                      | 44.1                                       | 4.5          | 5.6           | 5.0           | -7.1          | -0.8           | -1.9           |
| • Non-agriculture                  | 52.9                                       | -4.4         | -5.3          | -7.5          | 3.0           | 1.9            | 3.7            |
| - Wholesale & retail trade         | 14.5                                       | 1.7          | -6.0          | -7.9          | 12.8          | 8.7            | -3.5           |
| - Manufacturing                    | 11.9                                       | -3.5         | -9.3          | -8.6          | -14.0         | -6.0           | 13.9           |
| - Construction                     | 8.0  | -18.7        | 8.8           | -13.6         | 13.5          | -16.4          | -0.5           |
| - Hotel & restaurants Services     | 5.7  | -15.1        | -13.1         | -12.3         | 5.4           | 20.4           | 14.8           |
| - Others                           | 12.8                                       | -0.6         | -6.1          | -1.0          | 0.9           | 8.3            | 2.2            |
| <b>Unemployed persons</b>          | <b>2.2</b>                                 | <b>1.2</b>   | <b>-37.9</b>  | <b>-1.8</b>   | <b>-17.5</b>  | <b>10.0</b>    | <b>15.3</b>    |
| <b>Seasonally inactive persons</b> | <b>0.8</b>                                 | <b>236.1</b> | <b>-28.7</b>  | <b>-55.8</b>  | <b>13.1</b>   | <b>-49.5</b>   | <b>0.2</b>     |

## Unemployment



Source : National Statistical Office



# DEPOSITS AND CREDITS OF COMMERCIAL BANKS

Economic Research Division, Northern Region Office

