



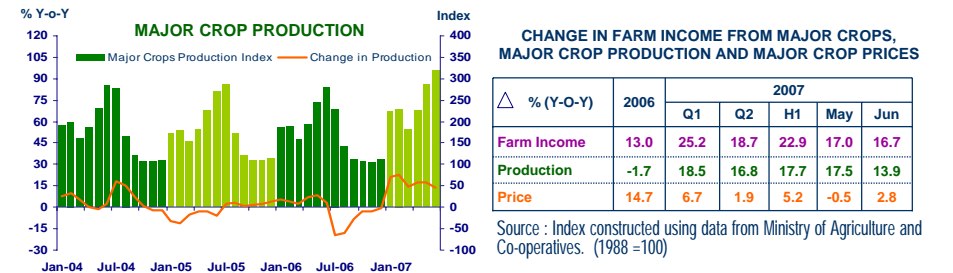
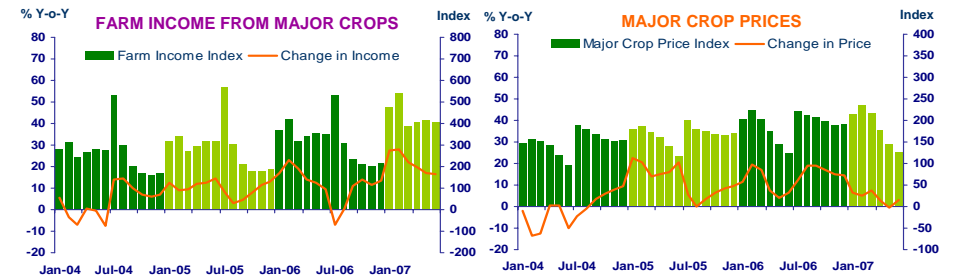
แถลงข่าวเศรษฐกิจการเงินภาคเหนือ เดือนมิถุนายน และครึ่งแรก ปี 2550

ธนาคารแห่งประเทศไทย สำนักงานภาคเหนือ



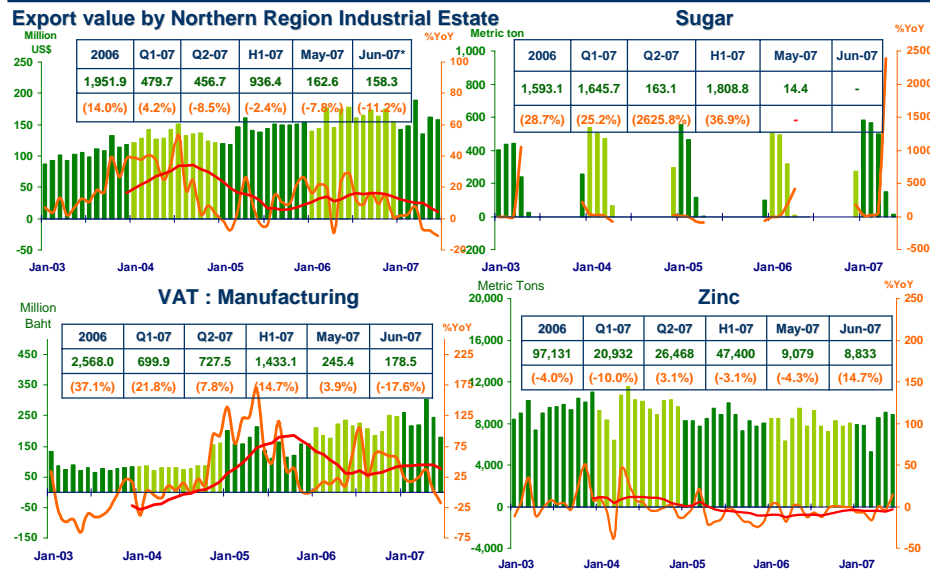
FARM INCOME FROM MAJOR CROPS

Economic Research Division, Northern Region Office



MANUFACTURING

3



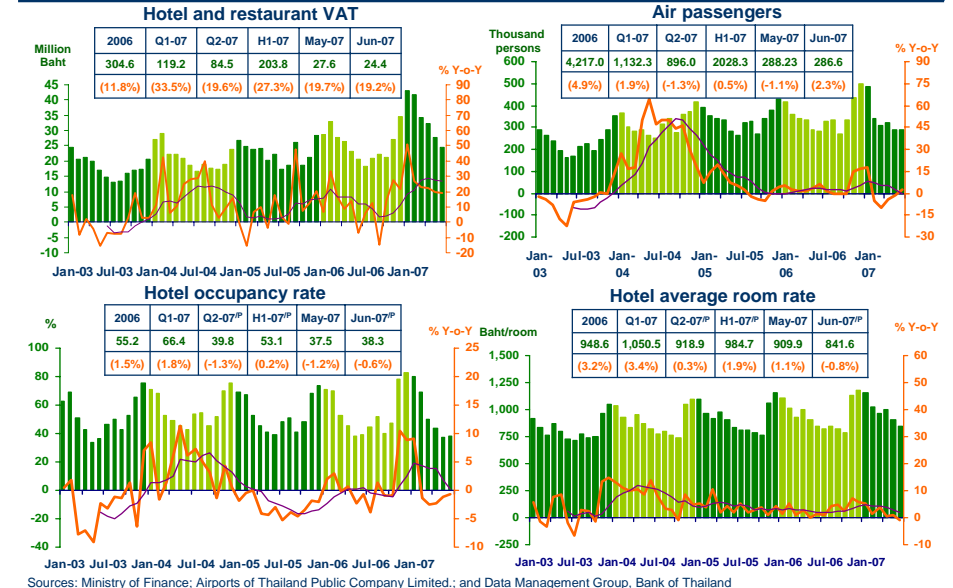
Sources: Customs Department ; Thai Cane and Sugar Cooperation Co., Ltd; Pa-Dang Industry Co., Ltd.; and Ministry of Finance



SERVICES

4

Economic Research Division, Northern Region Office



Sources: Ministry of Finance; Airports of Thailand Public Company Limited.; and Data Management Group, Bank of Thailand

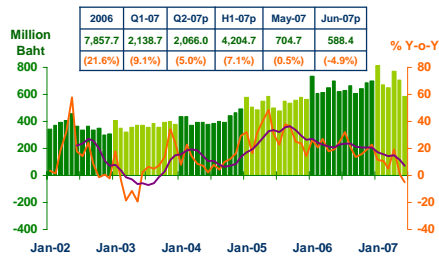


Private Consumption

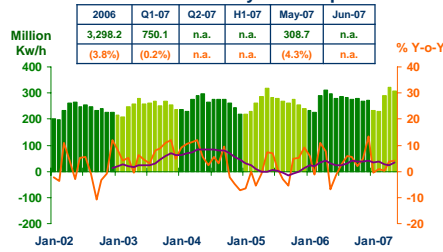
5

Economic Research Division, Northern Region Office

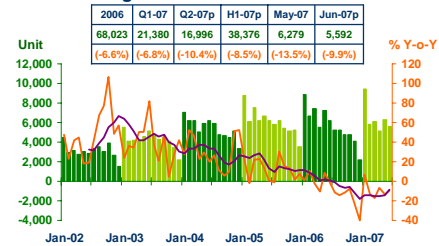
VAT



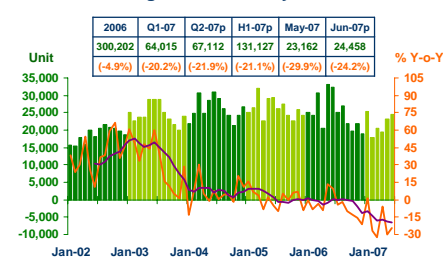
Household electricity consumption



Registered passenger car and registered commercial car



Registered motorcycle



Sources: Ministry of Finance, Provincial Electricity Authority, Provincial Land Transportation Offices

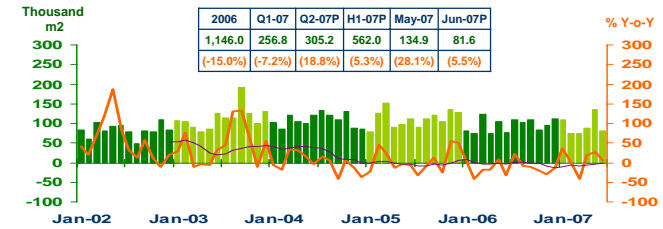


Private Investment

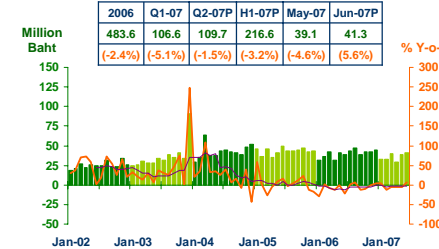
6

Economic Research Division, Northern Region Office

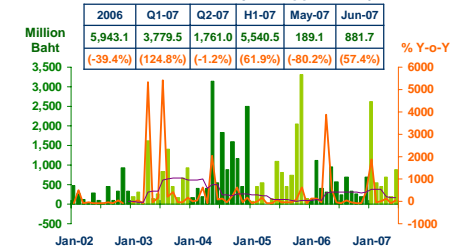
Construction Permitted in Municipal Zone



Land Transaction Fee



Investment Value of Projects Approved by BOI



Sources: Municipality Offices; Provincial Land Offices; Northern Region Investment and Economic Center (BOI)



Foreign Trade

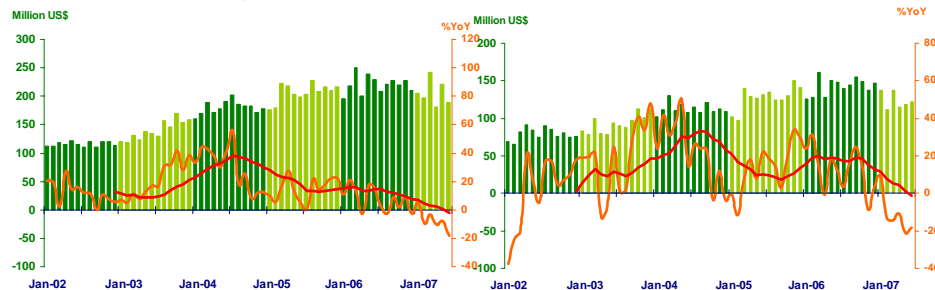
7

Economic Research Division, Northern Region Office

	2006	2007				
		H1	Q1	Q2	May	Jun
EXPORTS	2,645.6	1,235.3	645.3	590.0	220.7	188.9
	(7.2%)	(-7.4%)	(-2.8%)	(-11.9%)	(-7.6%)	(-17.9%)
IMPORTS	1,715.9	740.9	386.3	354.6	118.3	121.5
	(11.8%)	(-12.1%)	(-7.0%)	(-17.0%)	(-21.3%)	(-18.2%)
Trade Balance	932.7	494.4	259.0	235.4	102.4	67.4

Export

Import



Source: Customs Department

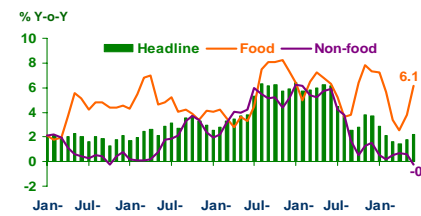


Price Level

8

Economic Research Division, Northern Region Office

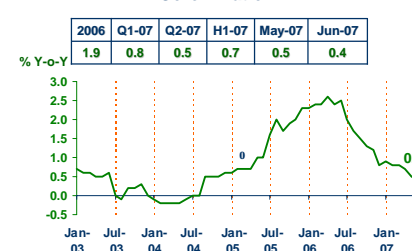
Headline Inflation



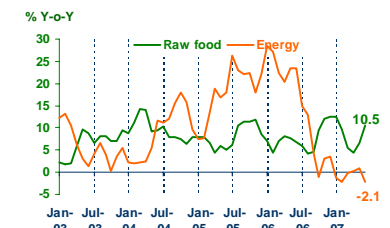
Headline inflation (2002 = 100)

%Y-o-Y	2006	Q1-07	Q2-07	H1-07	May-07	Jun-07
Headline	4.7	2.2	1.8	2.0	1.8	2.2
Food	6.0	5.4	4.1	4.7	3.8	6.1
Non-food	3.9	0.4	0.4	0.4	0.6	-0.2

Core Inflation



Rawfood and Energy



Sources: Bureau of Trade and Economic Indices, Ministry of Commerce
Note: Northern region's Core CPI data has been released since January 2002



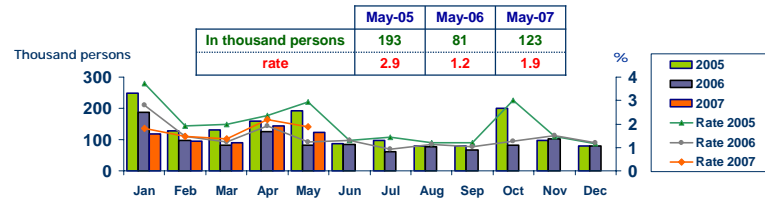
Labor Force Survey

9

Economic Research Division, Northern Region Office

	% of Total Labor Force (as of May 2007)	2006 (Δ%)	Q1-06 (Δ%)	Q2-06 (Δ%)	Q3-06 (Δ%)	Apr-07 (Δ%)	May-07 (Δ%)
Labor Force (1,000 Persons)	100.0	6,741	6,520	6,526	6,503	6,617	6,549
Employed persons	97.3	0.3	-0.5	-1.4	-2.2	1.1	-2.4
• Agriculture	45.5	4.5	5.6	5.0	-7.1	-1.9	1.0
• Non-agriculture	51.8	-4.4	-5.3	-7.5	3.0	3.7	-5.2
- Wholesale & retail trade	14.1	1.7	-6.0	-7.9	12.8	-3.5	-5.6
- Manufacturing	10.8	-3.5	-9.3	-8.6	-14.0	13.9	-4.1
- Construction	6.0	-18.7	8.8	-13.6	13.5	-0.5	-21.4
- Hotel & restaurants Services	5.6	-15.1	-13.1	-12.3	5.4	14.8	-1.2
- Others	15.3	-0.6	-6.1	-1.0	0.9	2.2	1.2
Unemployed persons	1.9	1.2	-37.9	-1.8	-17.5	15.3	52.1
Seasonally inactive persons	0.8	236.1	-28.7	-55.8	13.1	0.2	64.3

Unemployment



Source : National Statistical Office



DEPOSITS AND CREDITS OF COMMERCIAL BANKS

10

Economic Research Division, Northern Region Office

