

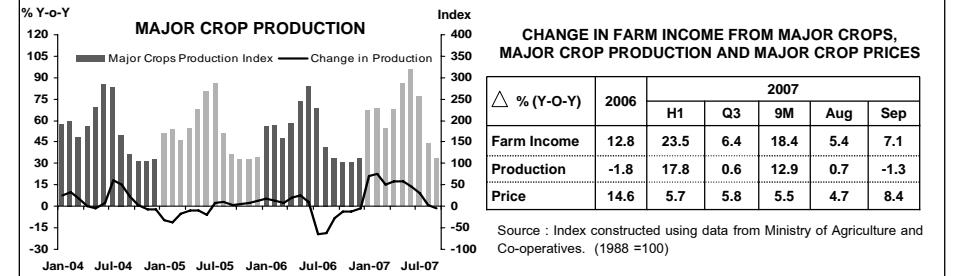
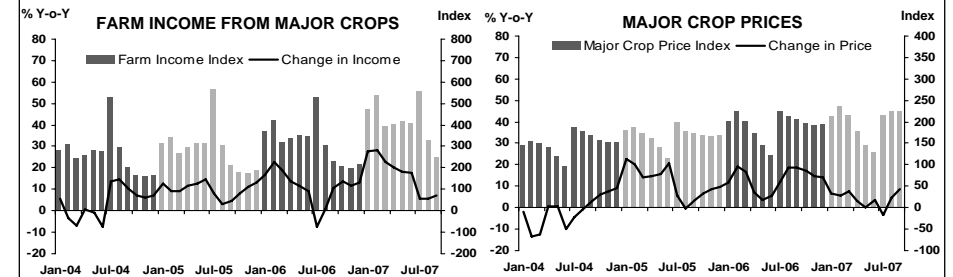


แถลงข่าวเศรษฐกิจการเงินภาคเหนือ เดือนกันยายน 2550 และ 9 เดือน ปี 2550



FARM INCOME FROM MAJOR CROPS

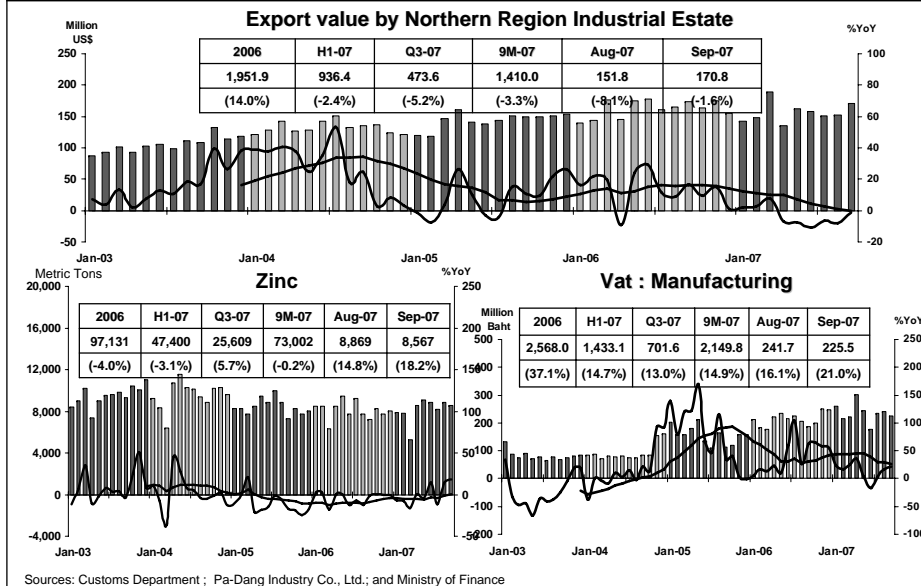
Economic Research Division, Northern Region Office



MANUFACTURING

Economic Research Division, Northern Region Office

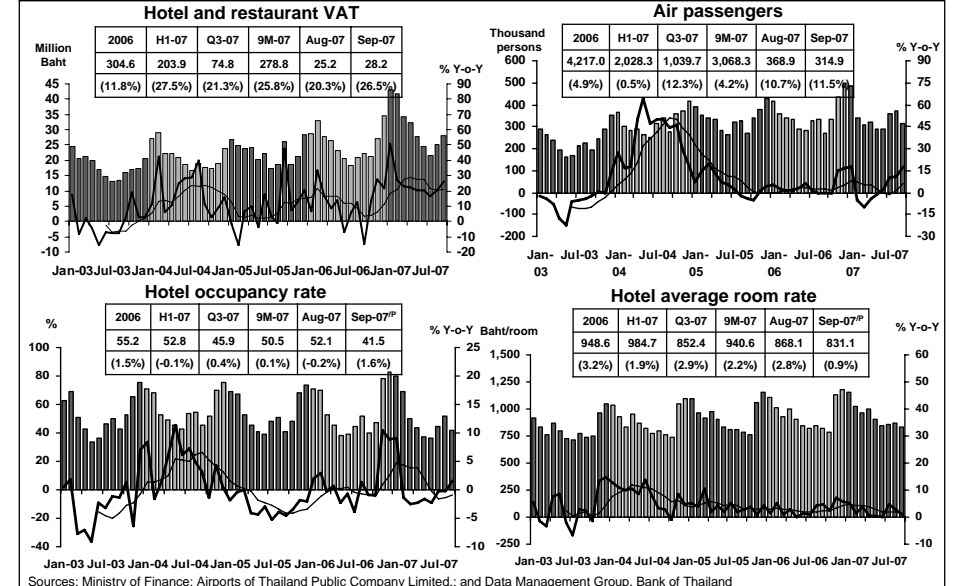
3



SERVICES

Economic Research Division, Northern Region Office

4



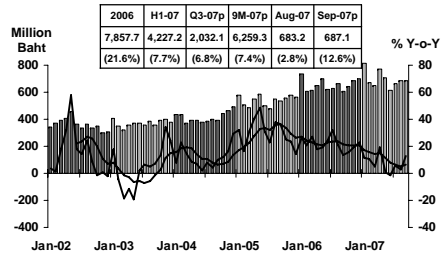


Private Consumption

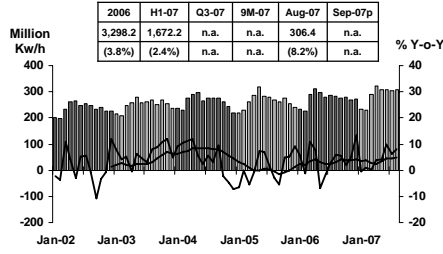
5

Economic Research Division, Northern Region Office

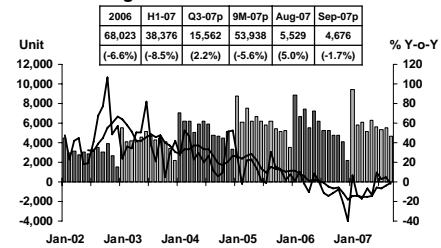
VAT



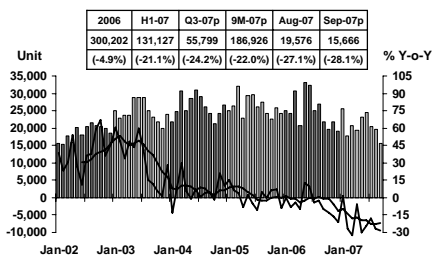
Household electricity consumption



Registered passenger car and registered commercial car



Registered motorcycle



Sources: Ministry of Finance, Provincial Electricity Authority, Provincial Land Transportation Offices

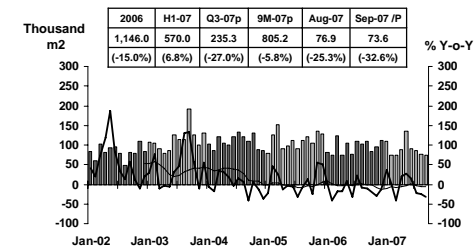


Private Investment

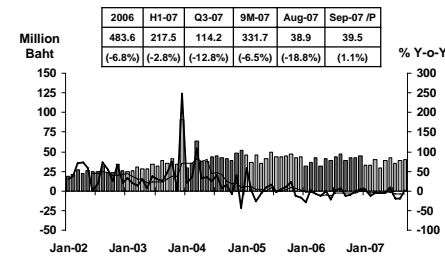
6

Economic Research Division, Northern Region Office

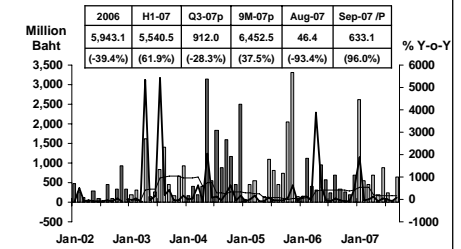
Construction Areas Permitted in Municipal Zone



Land Transaction Fee



Investment Value of Projects Approved by BOI



Sources: Cement Thai Plc. and Jalaorathan Cement Plc.; Municipality Offices; Provincial Land Offices; Customs Department; Northern Region Investment and Economic Center (BOI)



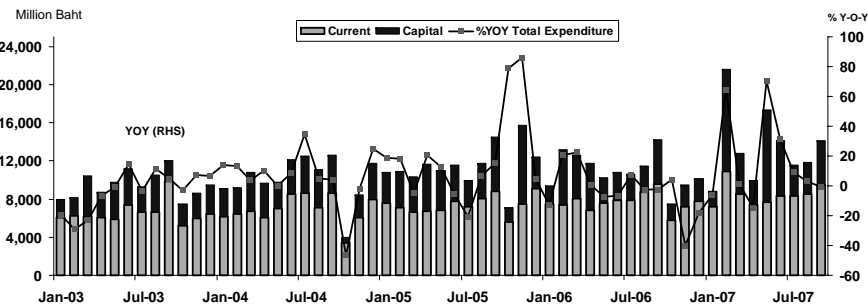
การเบิกจ่ายเงินงบประมาณผ่านคลังจังหวัดในภาคเหนือ

7

Economic Research Division, Northern Region Office

Expenditure

Expenditure	2549 (Fiscal)	2550 (Fiscal)	2550 (Calendar)				
			H1-07	Q3-07p	9M-07p	Aug-07	Sep-07p
Current	93,358.3	97,085.4	49,965.1	26,390.1	76,355.2	8,566.6	9,480.7
	(11.3)	(4.0)	(10.9)	(0.8)	(7.2)	(-1.3)	(-1.2)
Capital	46,018.1	52,191.6	34,748.0	11,100.1	45,848.1	3,263.8	4,614.5
	(8.1)	(13.4)	(52.6)	(9.7)	(39.4)	(15.8)	(0.5)
Total	139,376.4	149,277.0	84,713.1	37,490.2	122,203.3	11,830.4	14,095.2
	(10.2)	(7.1)	(24.9)	(3.3)	(17.4)	(2.9)	(-0.7)



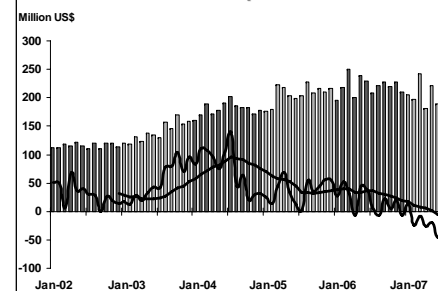
Foreign Trade

8

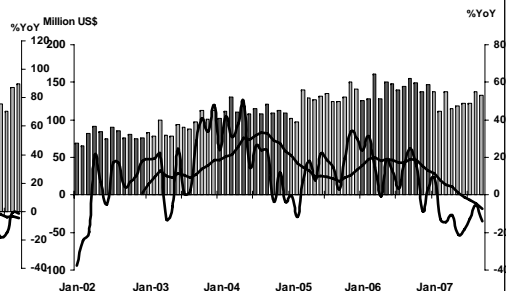
Economic Research Division, Northern Region Office

	2006	2007				
		H1	Q3	9M	Aug	Sep
EXPORTS	2,645.6	1,235.3	620.5	1,855.8	218.4	225.1
	(7.2%)	(-7.4%)	(-5.5%)	(-6.8%)	(-1.1%)	(-1.2%)
IMPORTS	1,715.9	740.9	392.8	1,133.8	137.1	133.2
	(11.8%)	(-12.1%)	(-10.7%)	(-11.6%)	(-5.4%)	(-13.9%)
Trade Balance	932.7	494.4	227.7	722.1	81.3	91.9

Export



Import

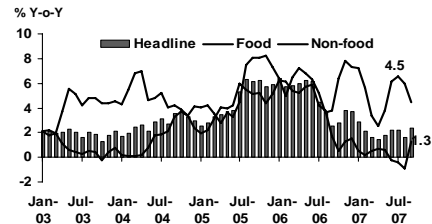




Price Level

Economic Research Division, Northern Region Office

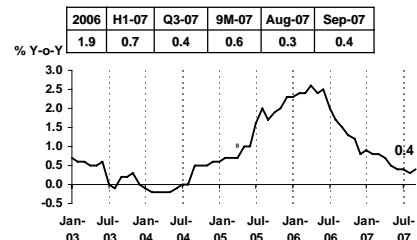
Headline Inflation



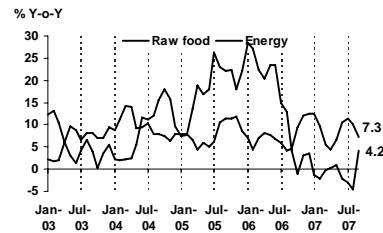
Headline inflation (2002 = 100)

%Y-o-Y	2006	H1-07	Q3-07	9M-07	Aug-07	Sep-07
Headline	4.7	2.0	2.1	2.0	1.6	2.4
Food	6.0	4.7	5.7	5.1	6.0	4.5
Non-food	3.9	0.4	0.0	0.3	-0.9	1.3

Core Inflation



Rawfood and Energy



Sources: Bureau of Trade and Economic Indices, Ministry of Commerce
Note: Northern region's Core CPI data has been released since January 2002

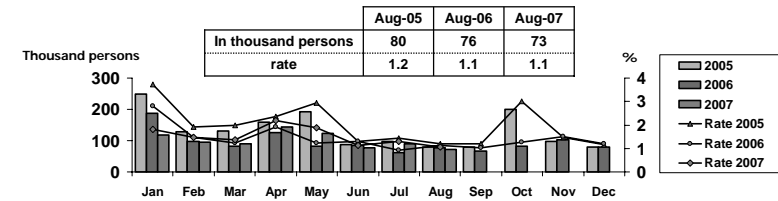


Labor Force Survey

Economic Research Division, Northern Region Office

	% of Total Labor Force (as of Aug 2007)	2006 (Δ%)	Q1-07 (Δ%)	Q2-07 (Δ%)	Jul-07 (Δ%)	Aug-07 (Δ%)
Labor Force (1,000 Persons)	100.0	6,741	6,534	6,756	6,810	6,825
Employed persons	98.7	0.3	0.6	3.5	0.3	0.7
• Agriculture	51.0	4.5	-0.8	0.2	-4.9	0.1
• Non-agriculture	47.7	-4.4	1.9	7.1	6.6	1.3
- Wholesale & retail trade	13.6	1.7	8.7	3.5	10.9	1.0
- Manufacturing	10.5	-3.5	-6.0	14.2	-3.0	-7.5
- Construction	6.1	-18.7	-16.4	13.5	7.9	-6.7
- Hotel & restaurants Services	4.9	-15.1	20.4	-3.7	8.9	25.0
- Others	12.6	-0.6	8.3	6.7	9.4	3.2
Unemployed persons	1.3	1.2	10.0	-10.2	42.0	-4.0
Seasonally inactive persons	0.0	236.1	-49.5	93.9	-88.6	59.9

Unemployment

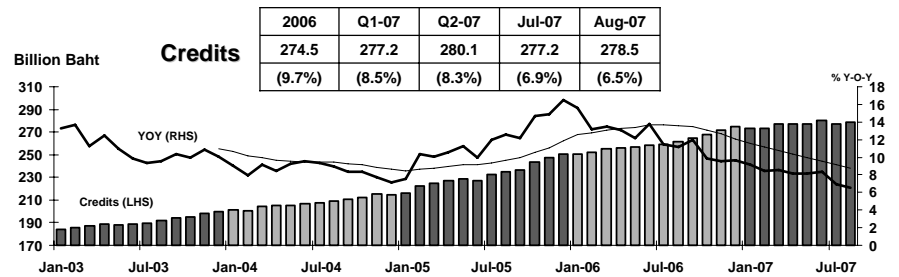
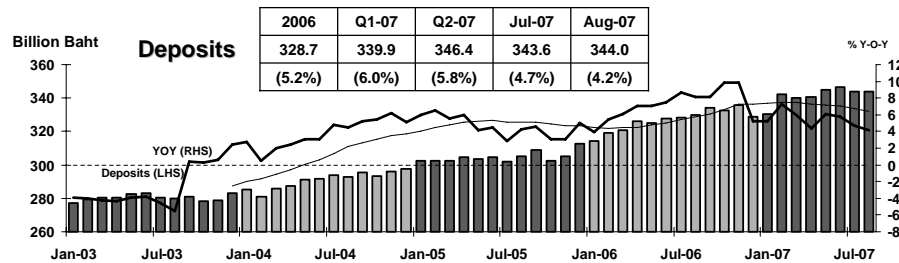


Source : National Statistical Office



DEPOSITS AND CREDITS OF COMMERCIAL BANKS

Economic Research Division, Northern Region Office



Source: Bank of Thailand