

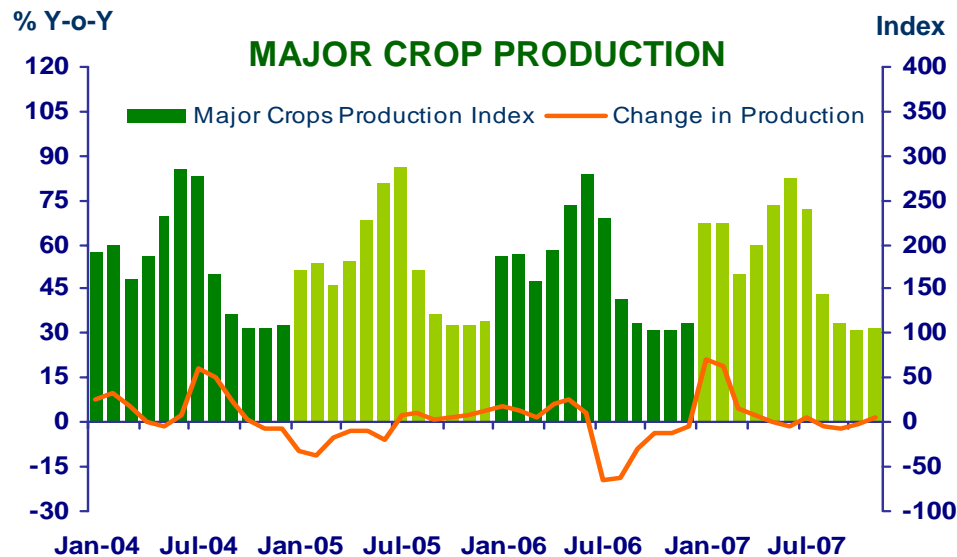
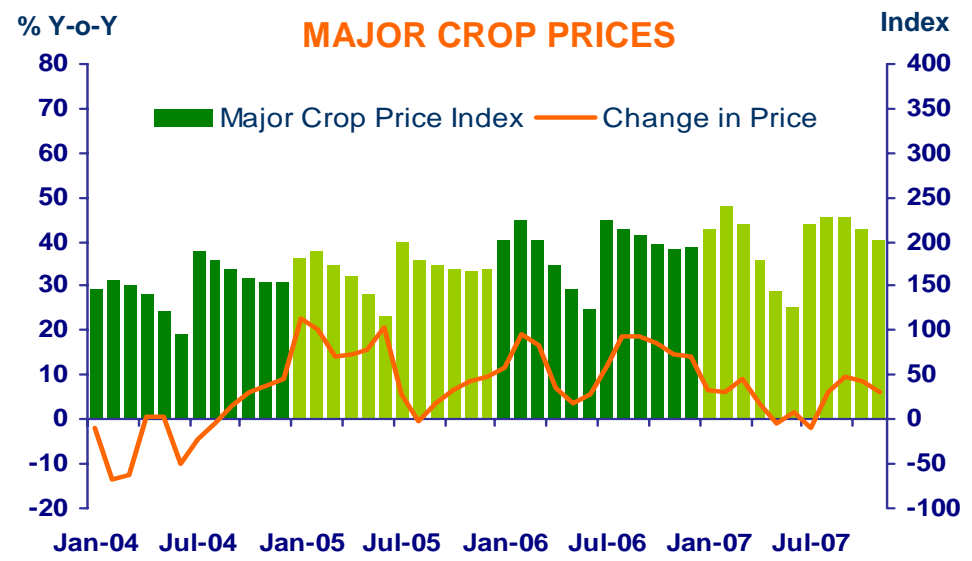
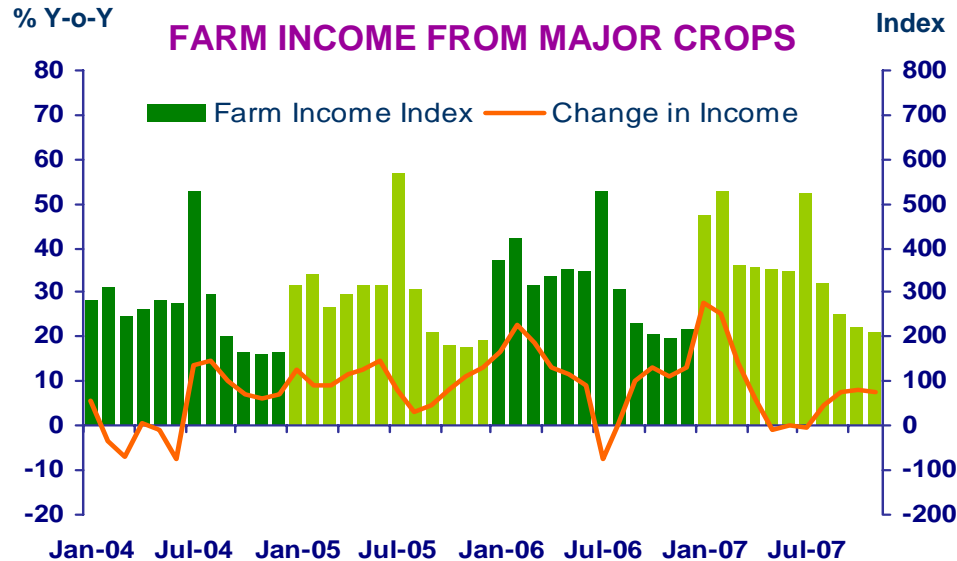


**แถลงข่าวเศรษฐกิจการเงินภาคเหนือ
เดือนพฤศจิกายน 2550**



FARM INCOME FROM MAJOR CROPS

Economic Research Division, Northern Region Office



CHANGE IN FARM INCOME FROM MAJOR CROPS, MAJOR CROP PRODUCTION AND MAJOR CROP PRICES

| △ % (Y-O-Y) | 2006 | 2007 | | | | | |
|-------------|------|------|-----|------|------|------|-----|
| | | Q1 | Q2 | H1 | Q3 | Oct | Nov |
| Farm Income | 12.6 | 20.6 | 3.8 | 14.7 | 5.6 | 8.3 | 7.4 |
| Production | -2.0 | 12.8 | 1.3 | 8.2 | -1.5 | -0.3 | 1.5 |
| Price | 14.6 | 7.8 | 2.5 | 6.5 | 7.1 | 8.6 | 5.9 |

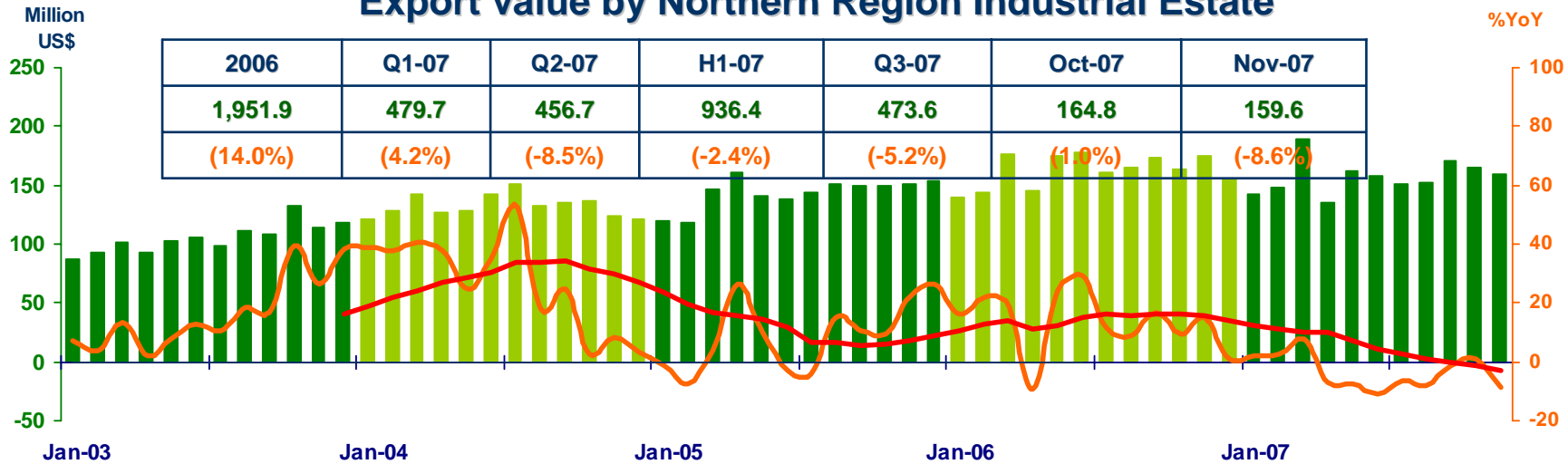
Source : Index constructed using data from Ministry of Agriculture and Co-operatives. (1988 =100)



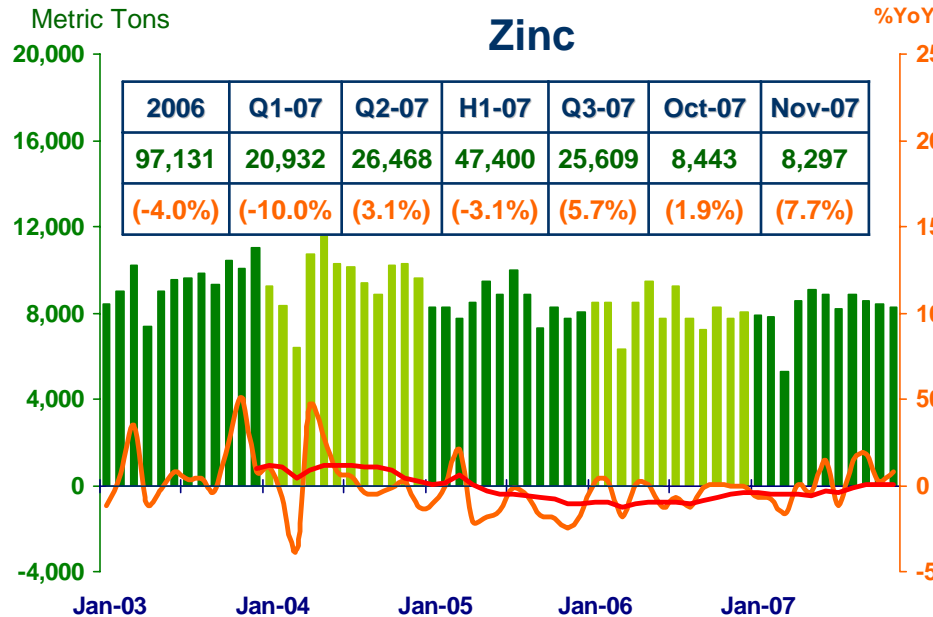
MANUFACTURING

Economic Research Division, Northern Region Office

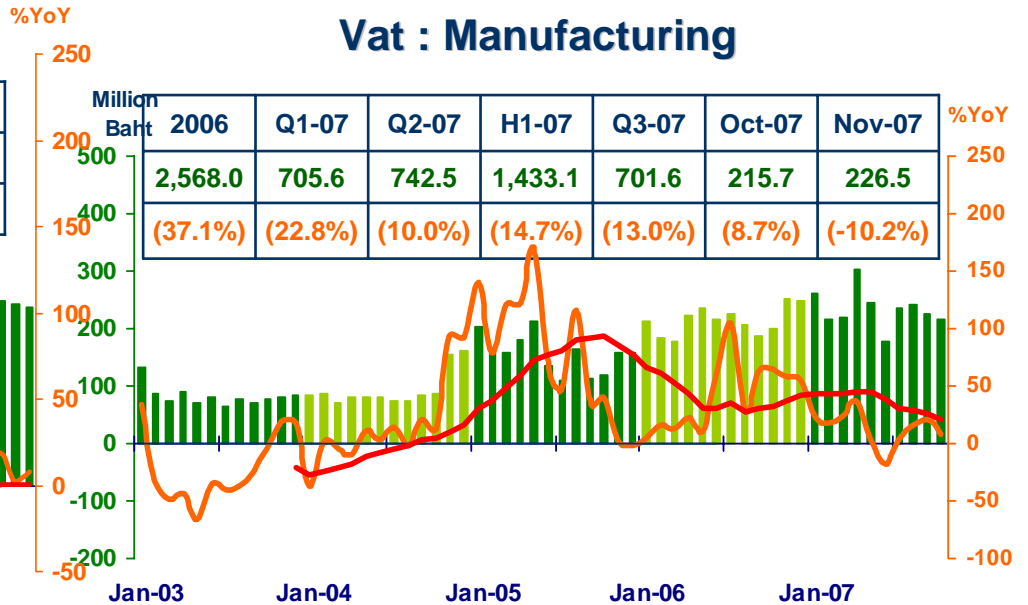
Export value by Northern Region Industrial Estate



Zinc



Vat : Manufacturing



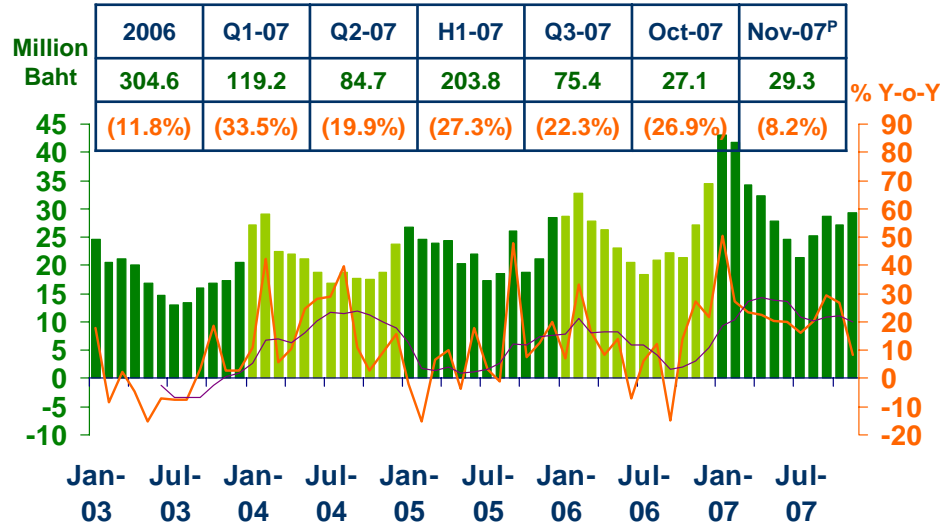
Sources: Customs Department ; Pa-Dang Industry Co., Ltd.; and Ministry of Finance



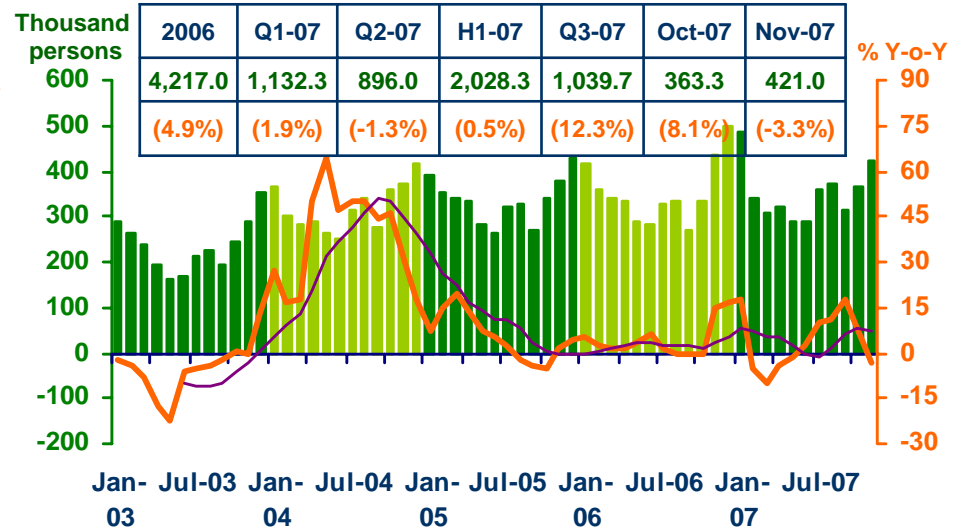
SERVICES

Economic Research Division, Northern Region Office

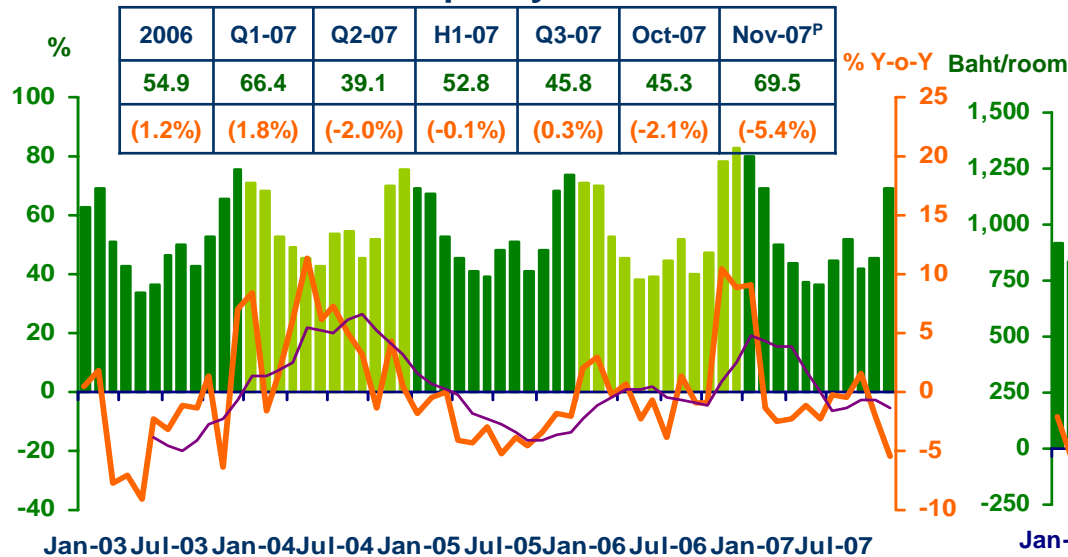
Hotel and restaurant VAT



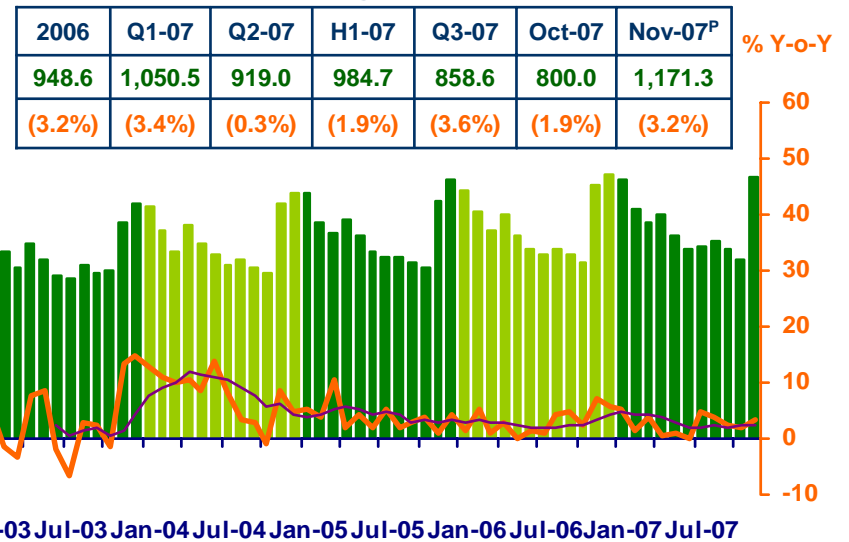
Air passengers



Hotel occupancy rate



Hotel average room rate



Sources: Ministry of Finance; Airports of Thailand Public Company Limited.; and Data Management Group, Bank of Thailand

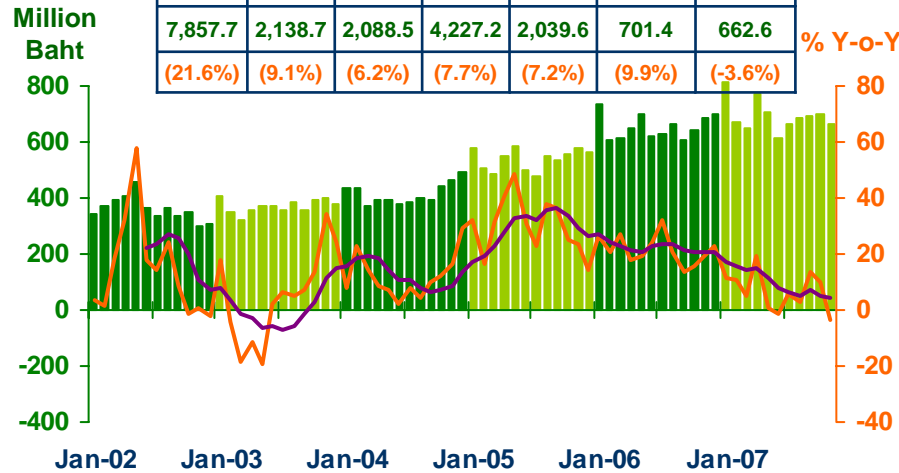


Private Consumption

Economic Research Division, Northern Region Office

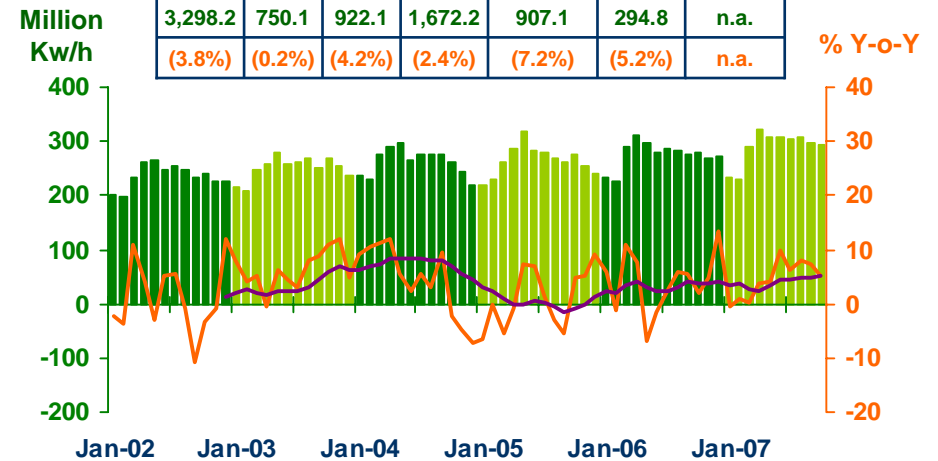
VAT

| 2006 | Q1-07 | Q2-07 | H1-07 | Q3-07 | Oct-07 | Nov-07p |
|---------|---------|---------|---------|---------|--------|---------|
| 7,857.7 | 2,138.7 | 2,088.5 | 4,227.2 | 2,039.6 | 701.4 | 662.6 |
| (21.6%) | (9.1%) | (6.2%) | (7.7%) | (7.2%) | (9.9%) | (-3.6%) |



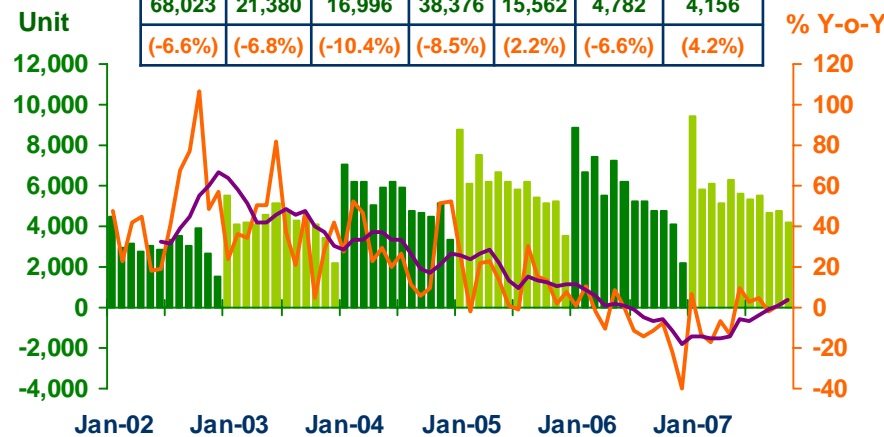
Household electricity consumption

| 2006 | Q1-07 | Q2-07 | H1-07 | Q3-07 | Oct-07 | Nov-07 |
|---------|--------|--------|---------|--------|--------|--------|
| 3,298.2 | 750.1 | 922.1 | 1,672.2 | 907.1 | 294.8 | n.a. |
| (3.8%) | (0.2%) | (4.2%) | (2.4%) | (7.2%) | (5.2%) | n.a. |



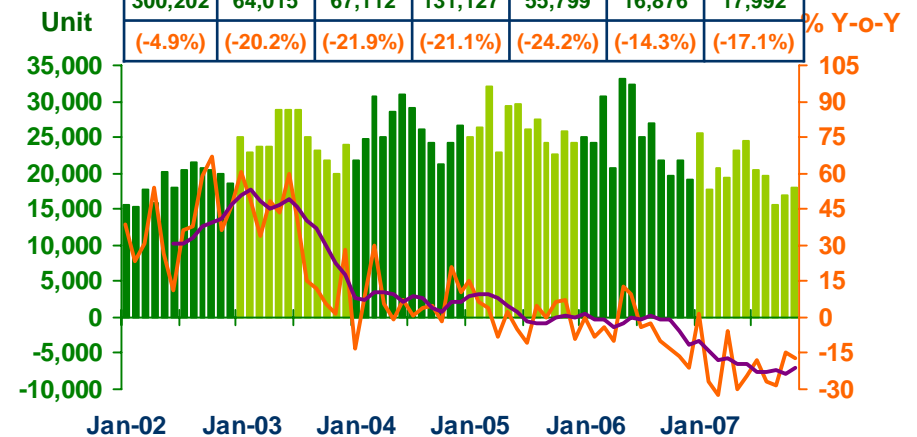
Registered passenger car and registered commercial car

| 2006 | Q1-07 | Q2-07 | H1-07 | Q3-07 | Oct-07 | Nov-07 |
|---------|---------|----------|---------|--------|---------|--------|
| 68,023 | 21,380 | 16,996 | 38,376 | 15,562 | 4,782 | 4,156 |
| (-6.6%) | (-6.8%) | (-10.4%) | (-8.5%) | (2.2%) | (-6.6%) | (4.2%) |



Registered motorcycle

| 2006 | Q1-07 | Q2-07 | H1-07 | Q3-07 | Oct-07 | Nov-07 |
|---------|----------|----------|----------|----------|----------|----------|
| 300,202 | 64,015 | 67,112 | 131,127 | 55,799 | 16,876 | 17,992 |
| (-4.9%) | (-20.2%) | (-21.9%) | (-21.1%) | (-24.2%) | (-14.3%) | (-17.1%) |



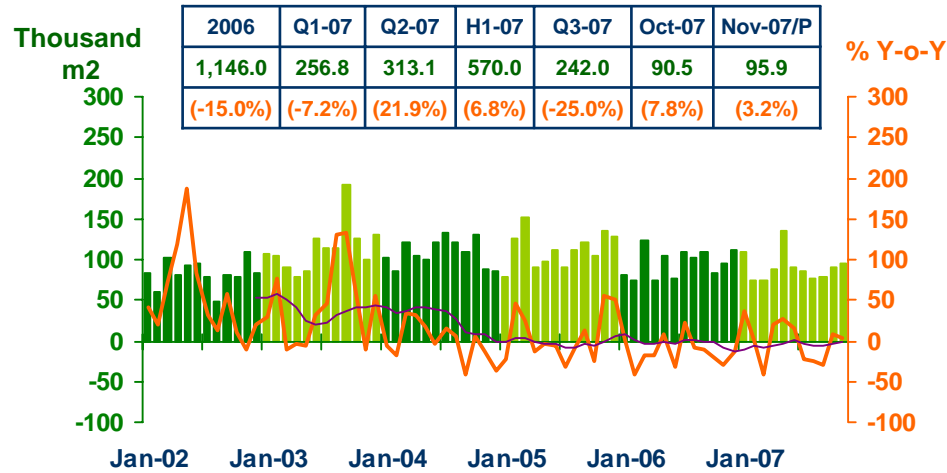
Sources: Ministry of Finance, Provincial Electricity Authority, Provincial Land Transportation Offices



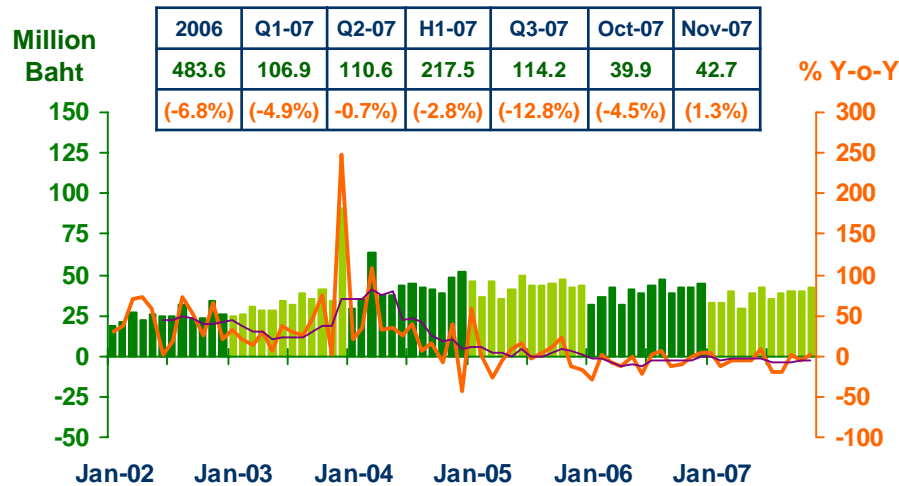
Private Investment

Economic Research Division, Northern Region Office

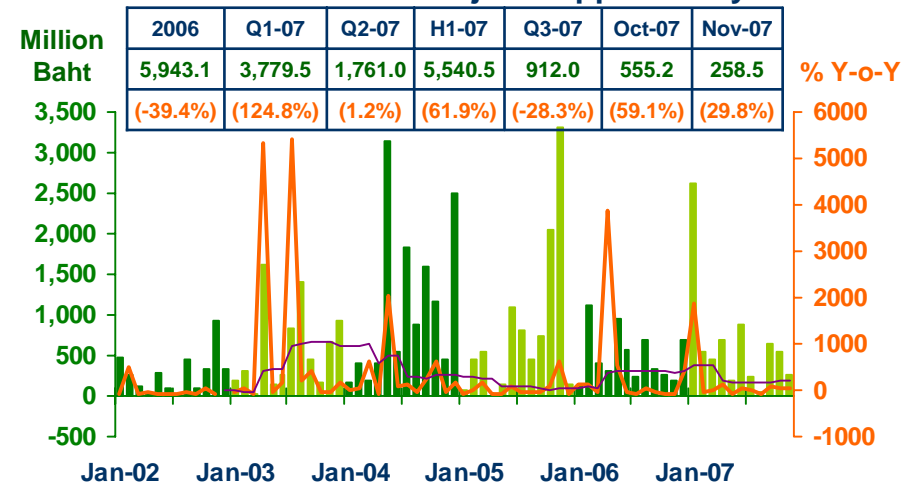
Construction Areas Permitted in Municipal Zone



Land Transaction Fee



Investment Value of Projects Approved by BOI



Sources: Municipality Offices; Provincial Land Offices; Northern Region Investment and Economic Center (BOI)

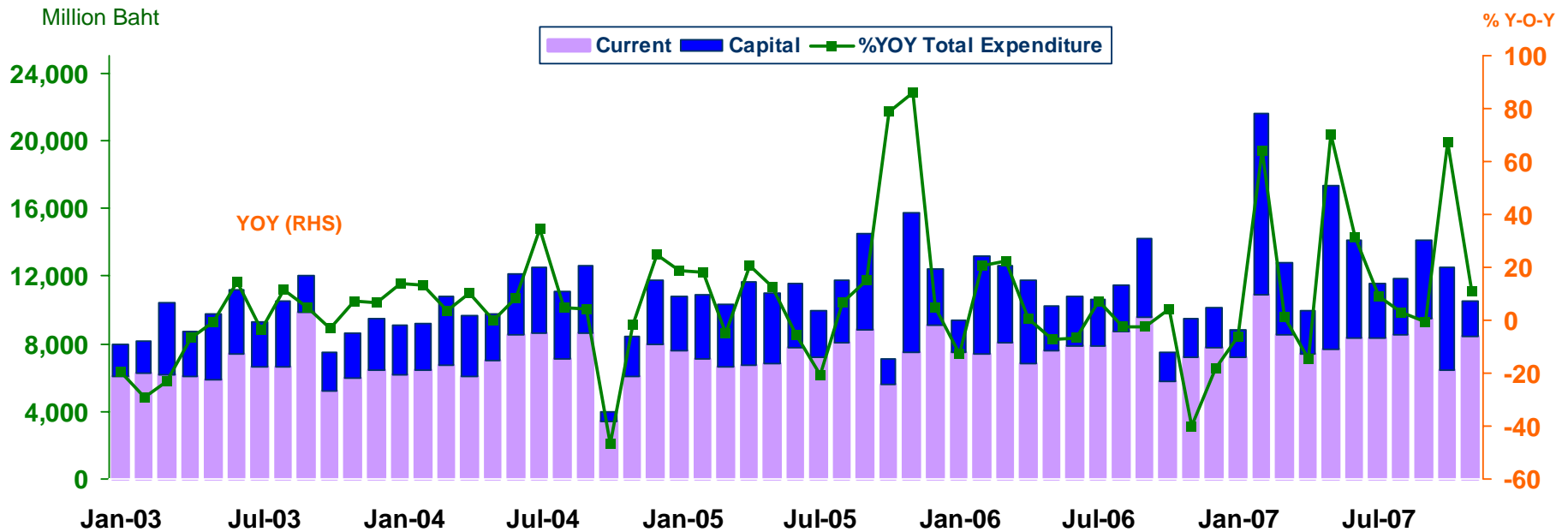


การเบิกจ่ายเงินงบประมาณผ่านคลังจังหวัดในภาคเหนือ

Economic Research Division, Northern Region Office

Expenditure

| Expenditure | 2549 | 2550 | | | | | |
|----------------|------------------|-----------------|-----------------|-----------------|-----------------|-----------------|-----------------|
| | | Q1-07 | Q2-07 | H1-07 | Q3-07 | Oct-07 | Nov-07p |
| Current | 91,977.0 | 26,675.7 | 23,289.4 | 49,965.1 | 26,390.1 | 6,423.9 | 8,434.6 |
| | (3.8) | (16.8) | (4.7) | (10.9) | (0.8) | (10.9) | (17.3) |
| Capital | 39,231.8 | 16,549.0 | 18,199.0 | 34,748.0 | 11,100.1 | 6,062.6 | 2,085.5 |
| | (-19.8) | (34.2) | (74.4) | (52.6) | (9.7) | (262.2) | (-8.2) |
| Total | 131,208.8 | 43,224.7 | 41,488.4 | 84,713.1 | 37,490.2 | 12,486.5 | 10,520.1 |
| | (-4.6) | (22.9) | (27.0) | (24.9) | (3.3) | (67.2) | (11.2) |





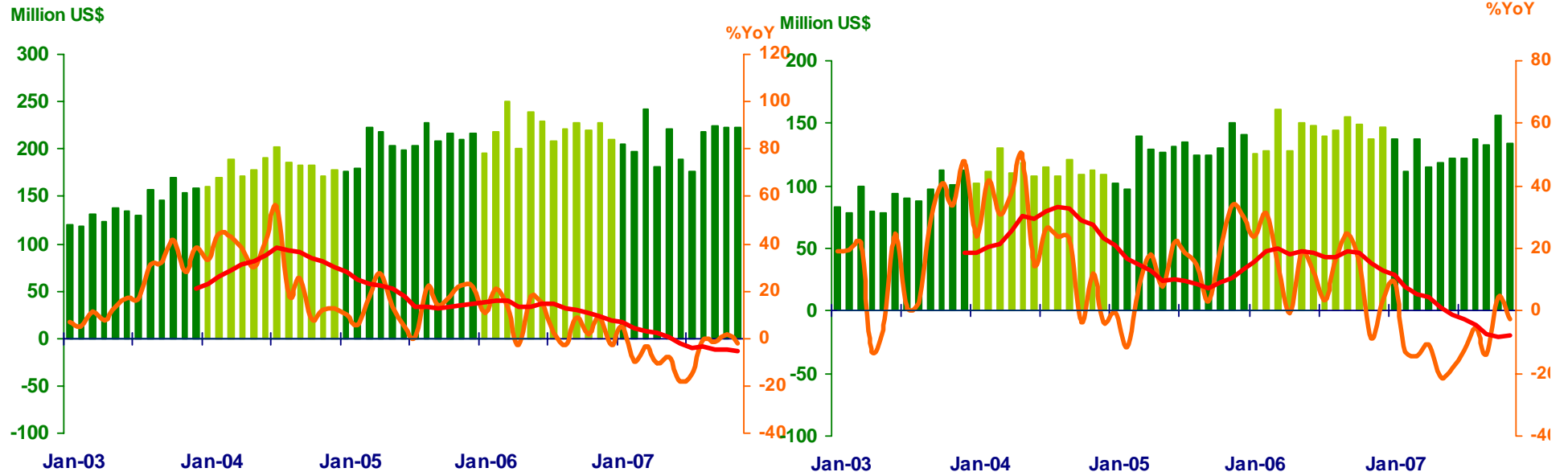
Foreign Trade

Economic Research Division, Northern Region Office

| | 2006 | 2007 | | | | | |
|---------------|---------|---------|----------|----------|----------|--------|---------|
| | | Q1 | Q2 | H1 | Q3 | Oct | Nov |
| EXPORTS | 2,645.6 | 645.3 | 590.0 | 1,253.3 | 620.5 | 222.6 | 223.3 |
| | (7.2%) | (-2.8%) | (-11.9%) | (-7.4%) | (-5.5%) | (1.6%) | (-2.3%) |
| IMPORTS | 1,715.9 | 386.3 | 354.6 | 740.9 | 392.8 | 156.6 | 133.9 |
| | (11.8%) | (-7.0%) | (-17.0%) | (-12.1%) | (-10.7%) | (4.6%) | (-2.6%) |
| Trade Balance | 932.7 | 259.0 | 235.4 | 494.4 | 227.7 | 66.0 | 89.4 |

Export

Import



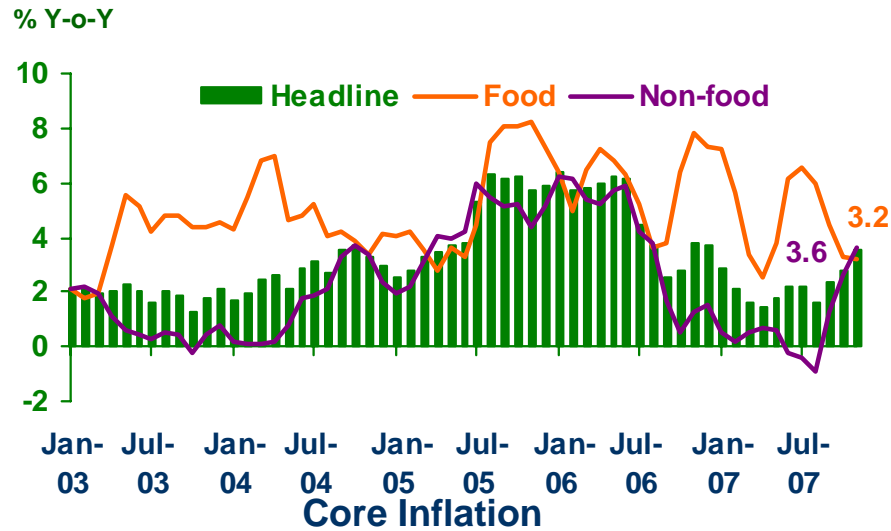
Source: Customs Department



Price Level

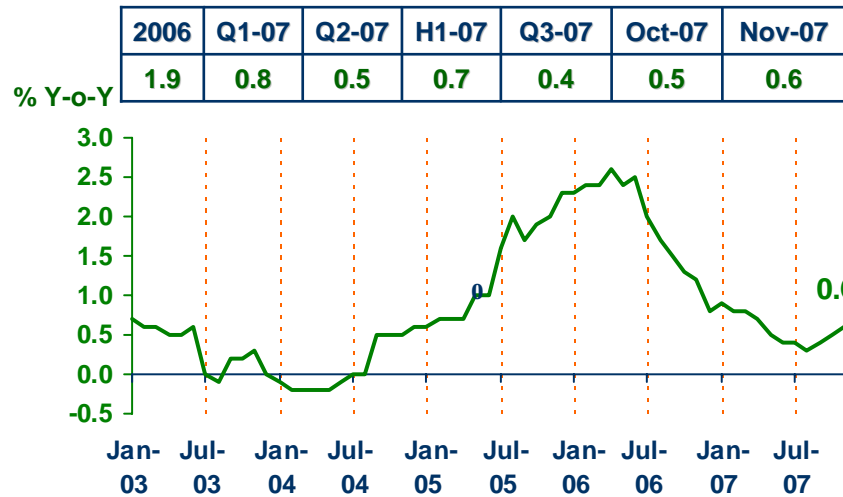
Economic Research Division, Northern Region Office

Headline Inflation

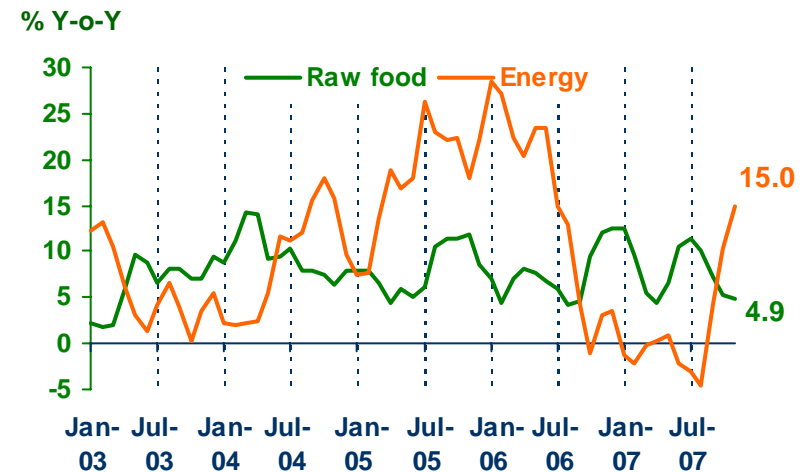


Headline inflation (2002 = 100)

| %Y-o-Y | 2006 | Q1-07 | Q2-07 | H1-07 | Q3-07 | Oct-07 | Nov-07 |
|----------|------|-------|-------|-------|-------|--------|--------|
| Headline | 4.7 | 2.2 | 1.8 | 2.0 | 2.1 | 2.8 | 3.5 |
| Food | 6.0 | 5.4 | 4.1 | 4.7 | 5.7 | 3.3 | 3.2 |
| Non-food | 3.9 | 0.4 | 0.4 | 0.4 | 0.0 | 2.6 | 3.6 |



Rawfood and Energy



Sources: Bureau of Trade and Economic Indices, Ministry of Commerce
 Note: Northern region's Core CPI data has been released since January 2002

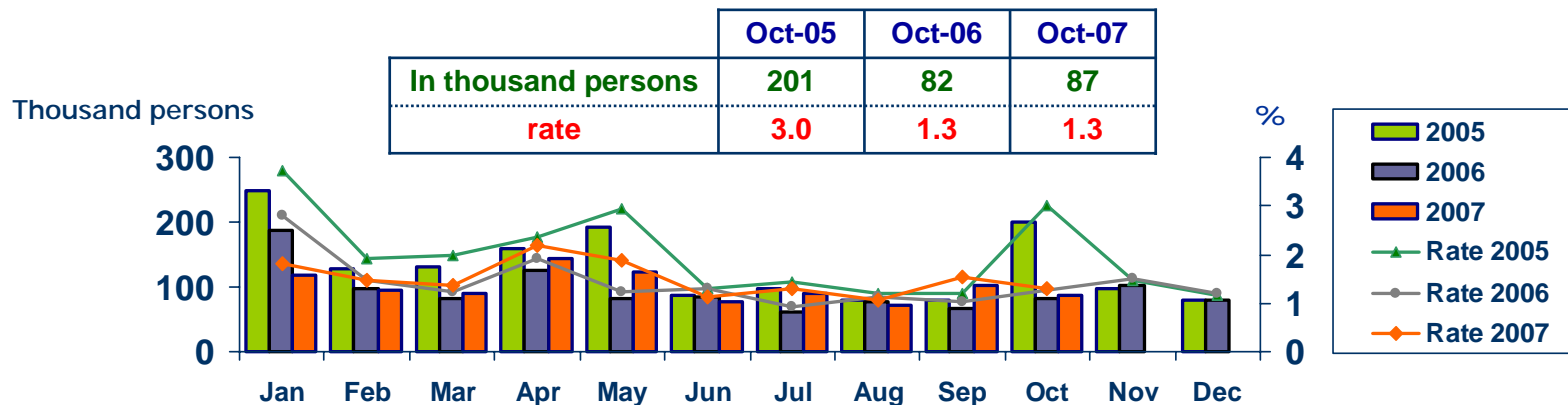


Labor Force Survey

Economic Research Division, Northern Region Office

| | % of Total Labor Force (as of Oct 2007) | 2006 ($\Delta\%$) | Q1-07 ($\Delta\%$) | Q2-07 ($\Delta\%$) | Sep-07 ($\Delta\%$) | Oct-07 ($\Delta\%$) |
|---|--|------------------------|-------------------------|-------------------------|--------------------------|--------------------------|
| Labor Force (1,000 Persons) | 100.0 | 6,741 | 6,534 | 6,756 | 6,732 | 6,647 |
| Employed persons | 98.3 | 0.3 | 0.6 | 3.5 | 3.0 | 1.9 |
| • Agriculture | 48.6 | 4.5 | -0.8 | 0.2 | 3.8 | -1.7 |
| • Non-agriculture | 49.7 | -4.4 | 1.9 | 7.1 | 2.3 | 5.2 |
| - Wholesale & retail trade | 13.5 | 1.7 | 8.7 | 3.5 | -7.1 | 3.8 |
| - Manufacturing | 10.5 | -3.5 | -6.0 | 14.2 | 17.1 | -2.8 |
| - Construction | 6.5 | -18.7 | -16.4 | 13.5 | -5.3 | 10.6 |
| - Hotel & restaurants Services | 5.2 | -15.1 | 20.4 | -3.7 | -10.2 | 22.9 |
| - Others | 14.0 | -0.6 | 8.3 | 6.7 | 12.8 | 5.1 |
| Unemployed persons | 1.5 | 1.2 | 10.0 | -10.2 | 57.0 | 6.0 |
| Seasonally inactive persons | 0.2 | 236.1 | -49.5 | 93.9 | -28.1 | -36.2 |

Unemployment

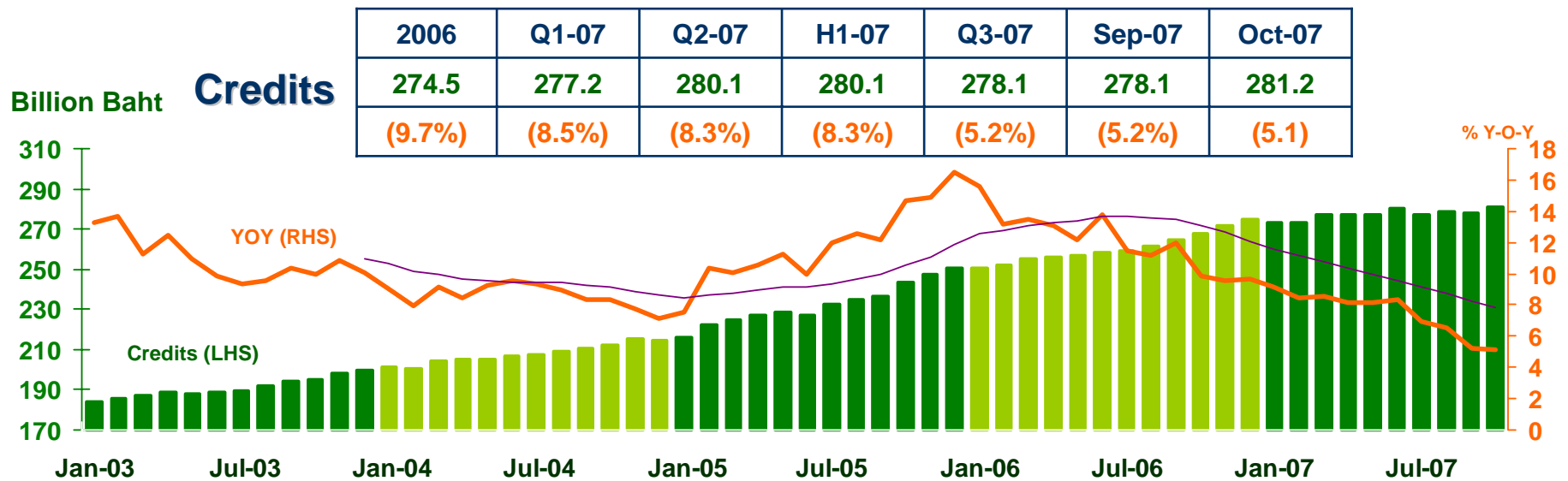
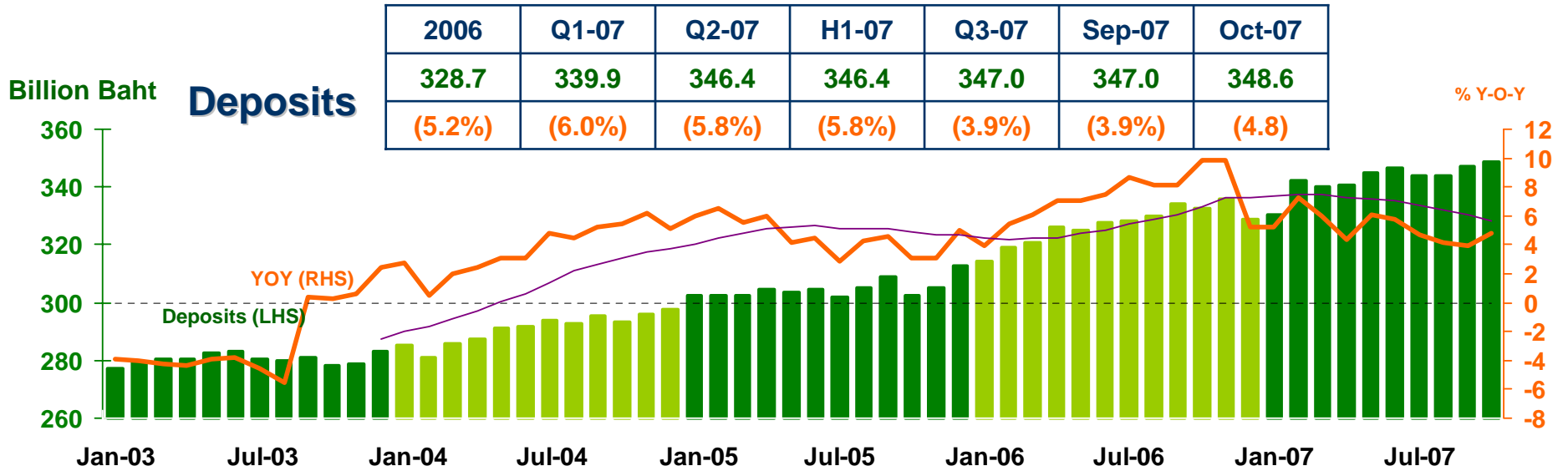


Source : National Statistical Office



DEPOSITS AND CREDITS OF COMMERCIAL BANKS

Economic Research Division, Northern Region Office



Source: Bank of Thailand