

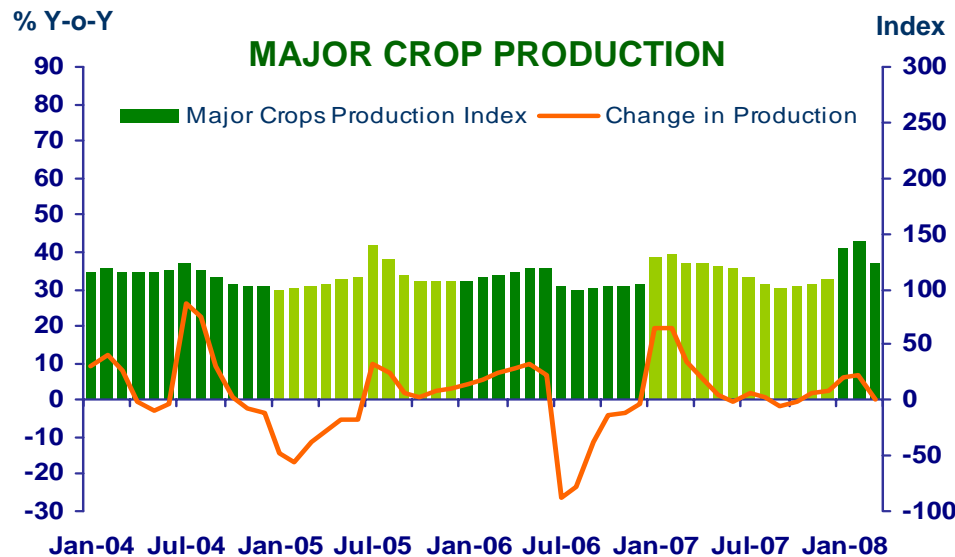
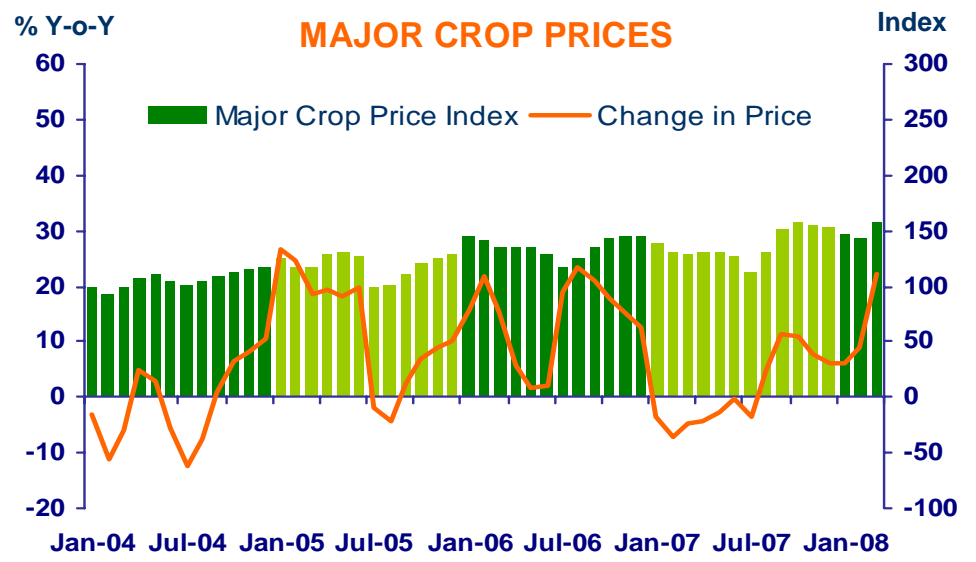
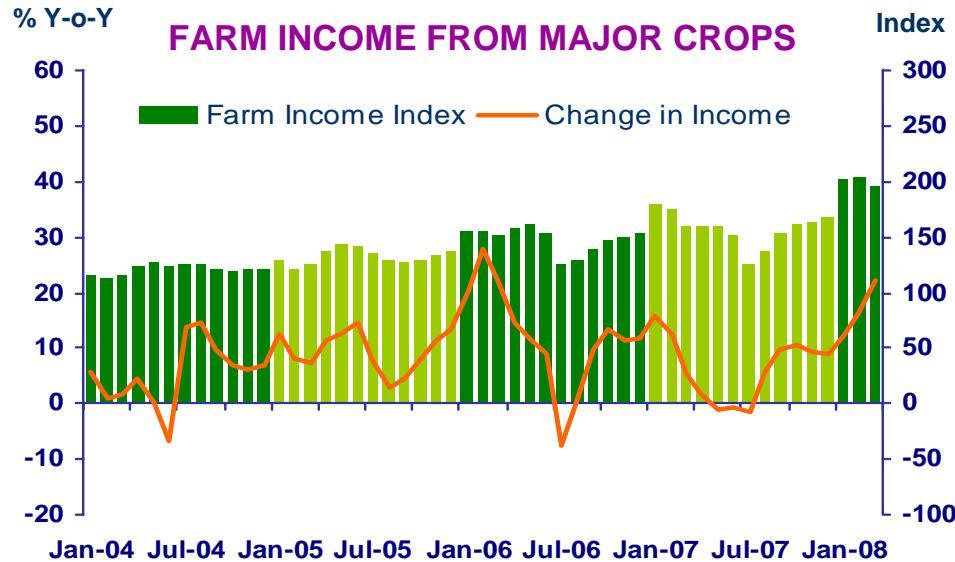


**แถลงข่าวเศรษฐกิจการเงินภาคเหนือ
เดือนมีนาคม 2551 และไตรมาสแรก ปี 2551**



FARM INCOME FROM MAJOR CROPS

Economic Research Division, Northern Region Office



CHANGE IN FARM INCOME FROM MAJOR CROPS, MAJOR CROP PRODUCTION AND MAJOR CROP PRICES

△ % (Y-O-Y)	2007	2007			2008			
		H1	Q3	Q4	Q1	Jan	Feb	Mar
Farm Income	8.2	7.0	6.9	9.5	17.5	12.0	16.0	22.4
Production	4.8	11.6	-0.3	1.8	3.8	6.0	7.0	0.1
Price	3.4	-4.6	7.2	7.7	13.7	6.0	9.0	22.3

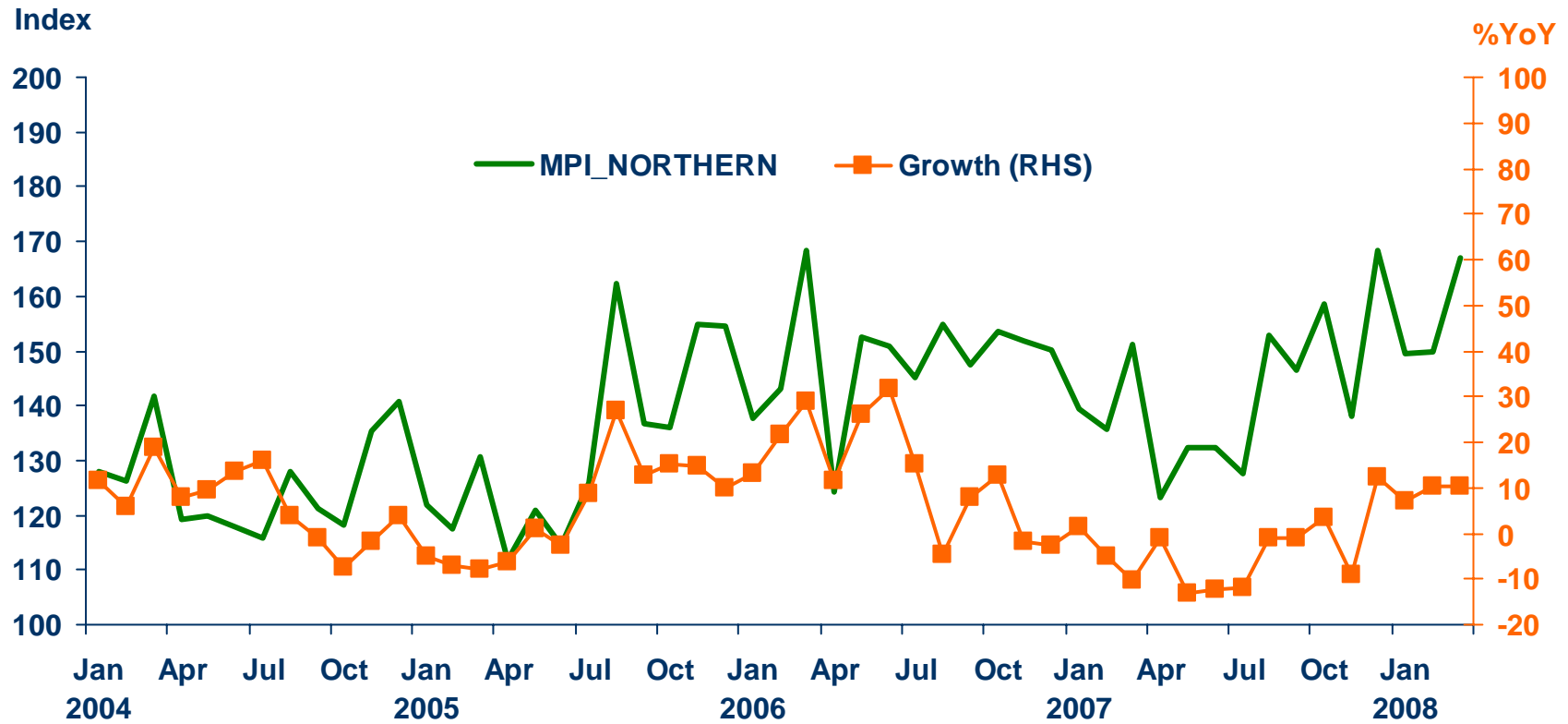
Source : Index constructed using data from Ministry of Agriculture and Co-operatives. (2002 =100)



Manufacturing Production Index Northern Region

Economic Research Division, Northern Region Office

	2007	H1-07	Q3-07	Q4-07	Q1-08 ^P	Jan-08	Feb-08	Mar-08 ^P
MPI level	142.2	135.7	142.3	154.9	155.4	149.6	149.8	166.9
MPI %yoy	-4.1	-7.1	-4.6	2.1	9.4	7.2	10.5	10.5



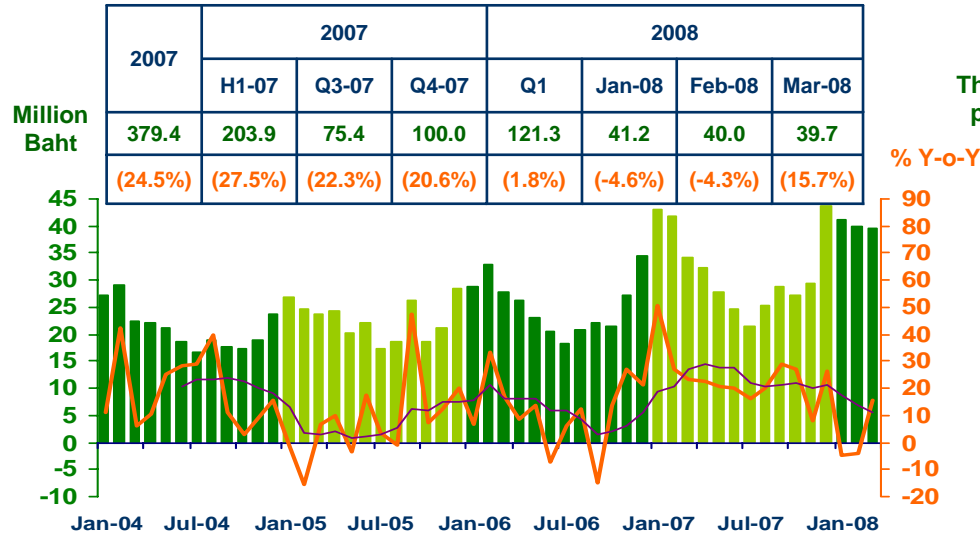
Sources: Index constructed using data from Customs Department , Excise Department and BOT Northern Region Survey. (2002 =100)
 P = Preliminary (83.0% coverage)



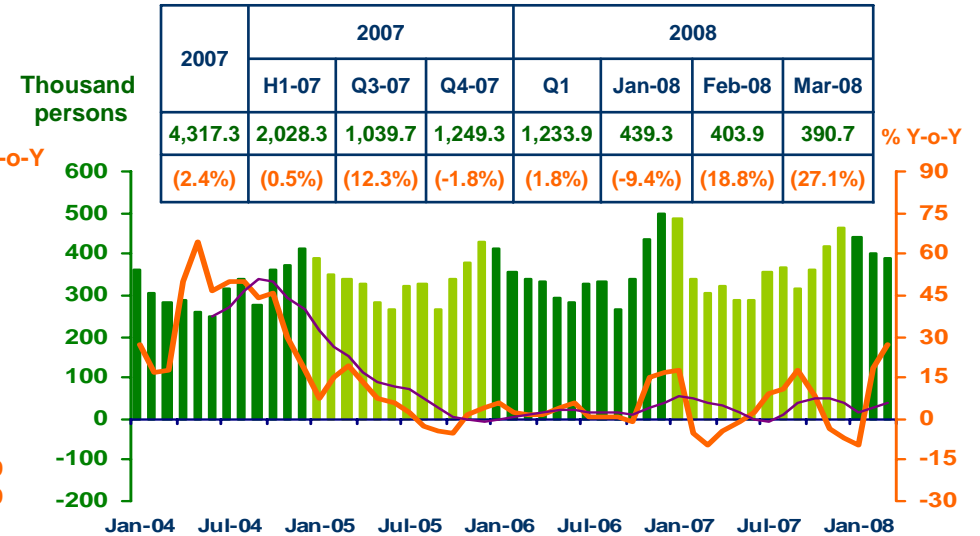
SERVICES

Economic Research Division, Northern Region Office

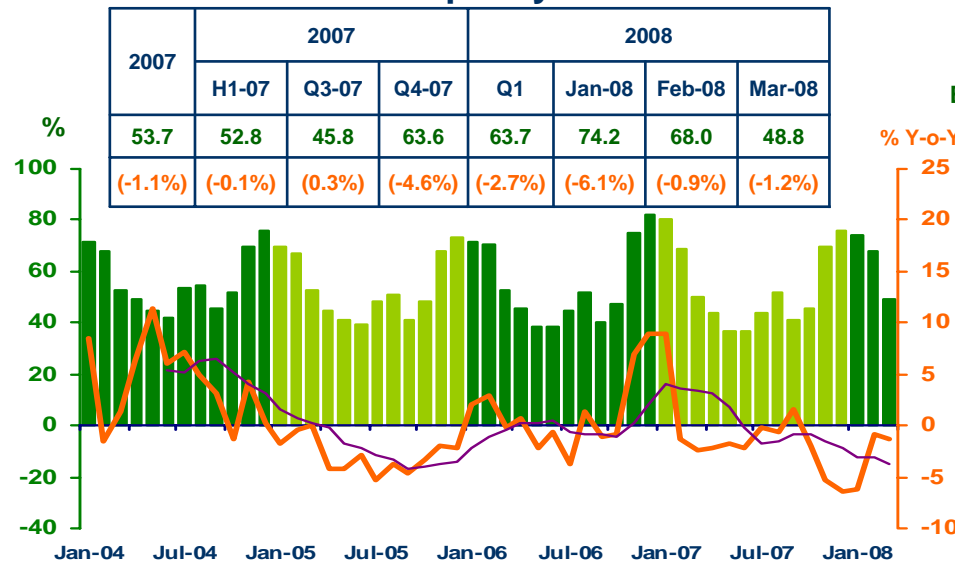
Hotel and restaurant VAT



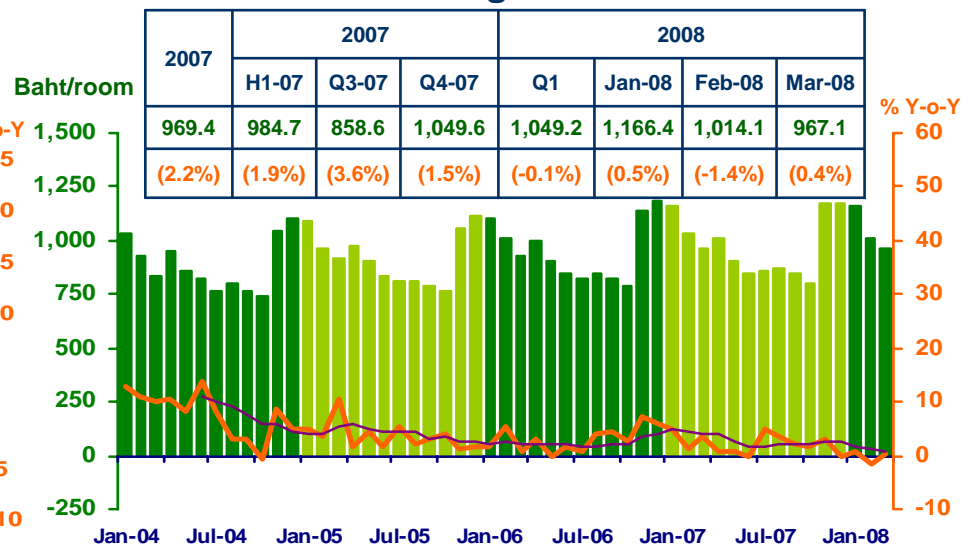
Air passengers



Hotel occupancy rate



Hotel average room rate



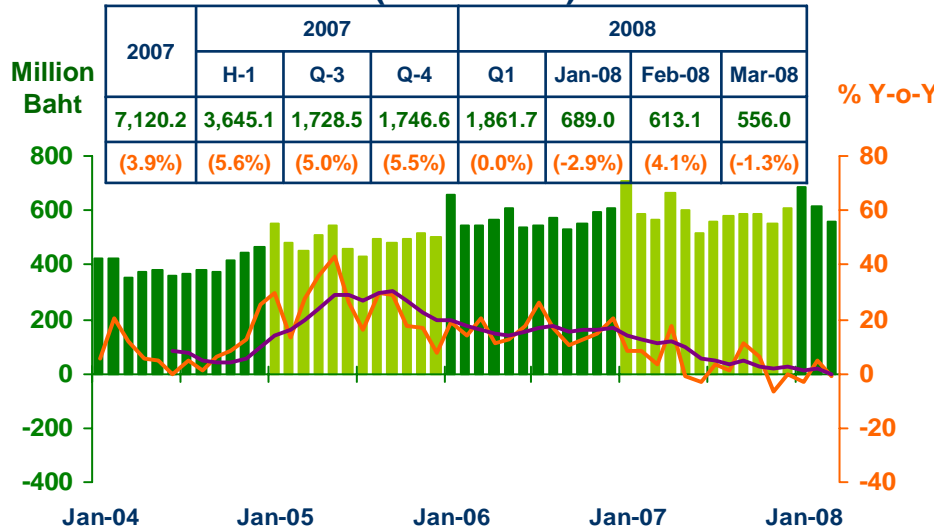
Sources: Ministry of Finance; Airports of Thailand Public Company Limited.; and Data Management Group, Bank of Thailand



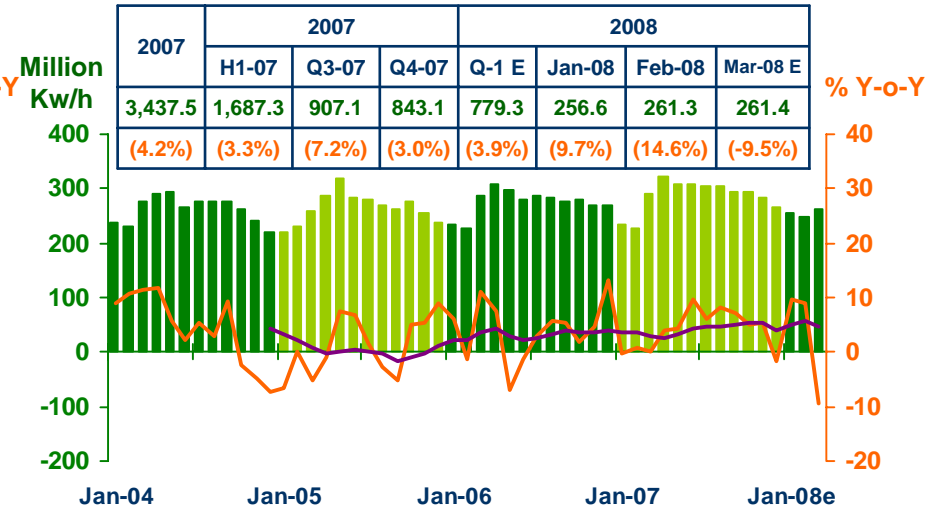
Private Consumption

Economic Research Division, Northern Region Office

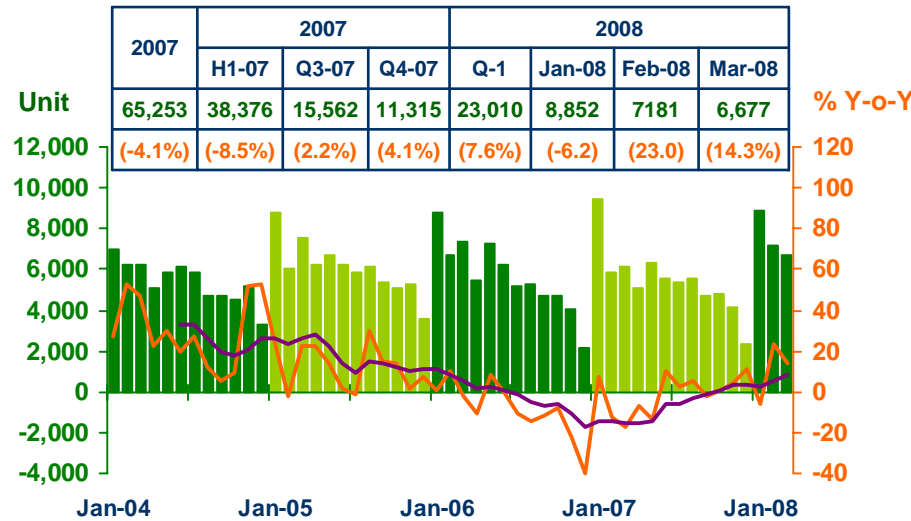
VAT (Real Term)



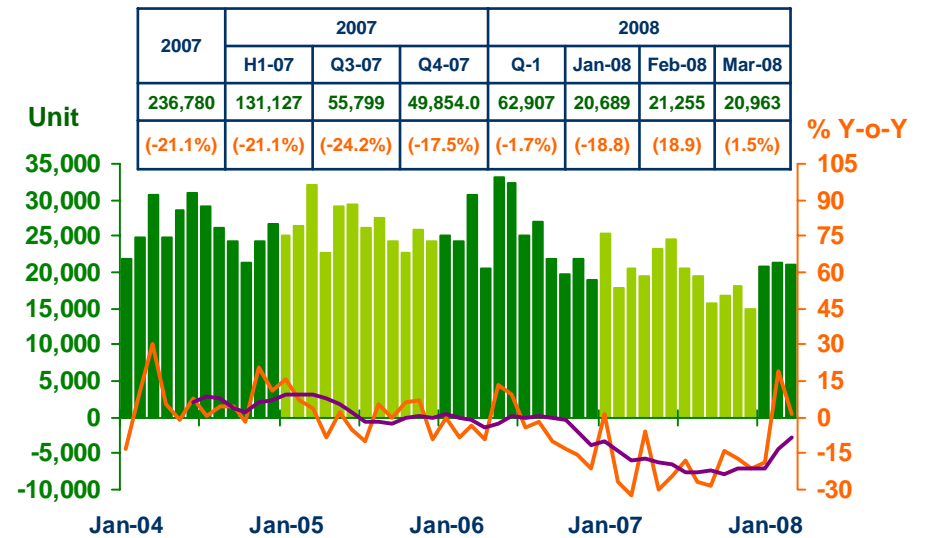
Household electricity consumption



Registered passenger car and registered commercial car



Registered motorcycle



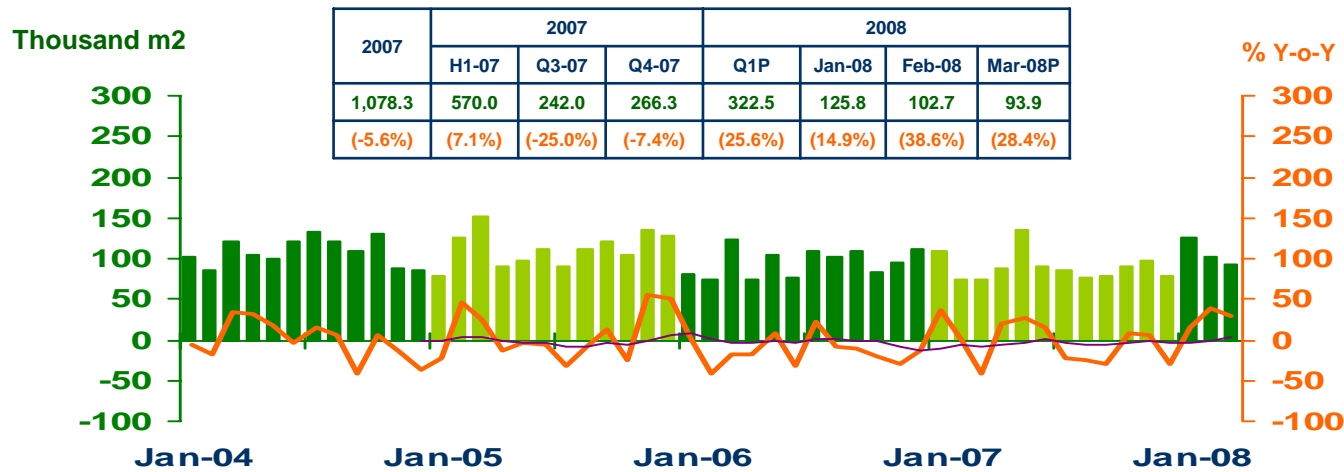
Sources: Ministry of Finance, Provincial Electricity Authority, Provincial Land Transportation Offices



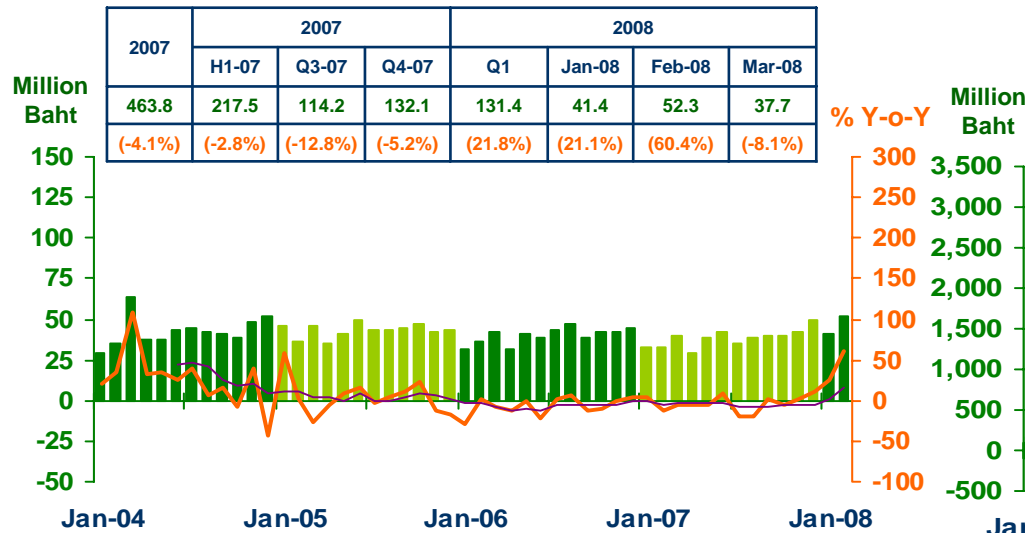
Private Investment

Economic Research Division, Northern Region Office

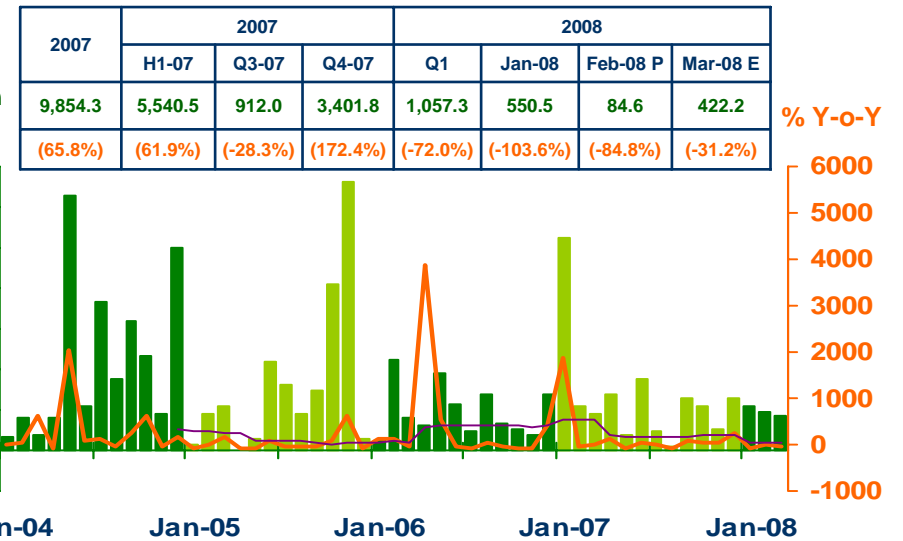
Construction Areas Permitted in Municipal Zone



Land Transaction Fee



Investment Value of Projects Approved by BOI



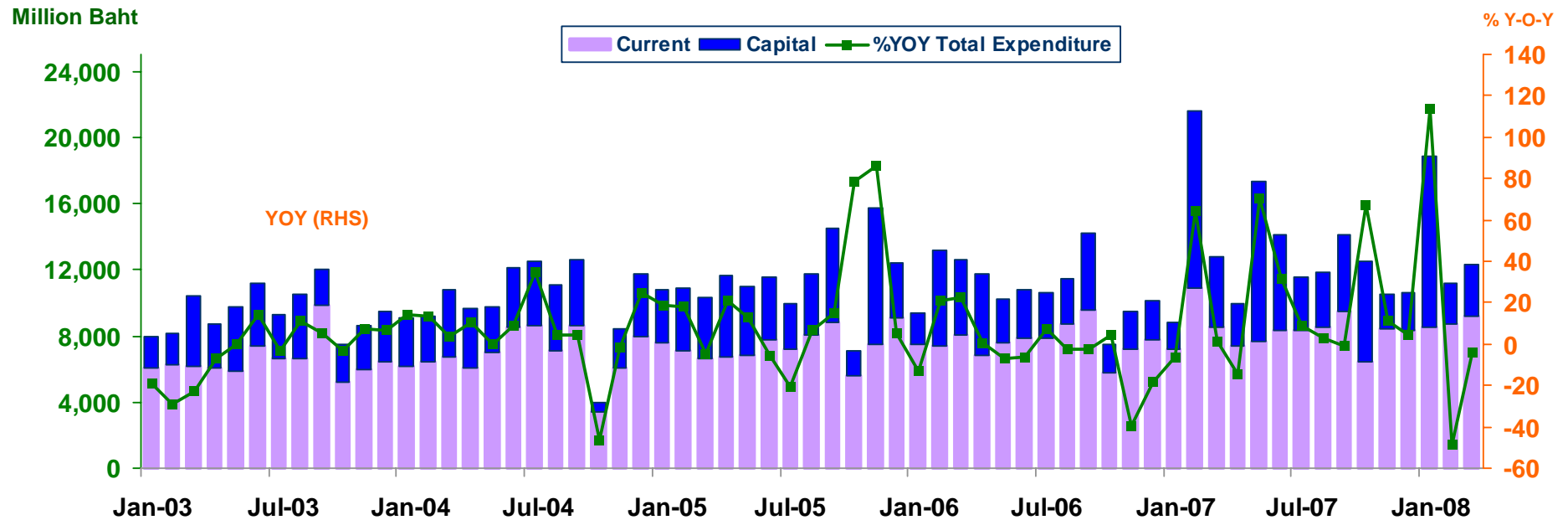
Sources: Municipality Offices; Provincial Land Offices; Northern Region Investment and Economic Center (BOI)



การเบิกจ่ายเงินงบประมาณผ่านคลังจังหวัดในภาคเหนือ

Economic Research Division, Northern Region Office

Expenditure	2007	2007			2008			
		H1-07	Q3-07	Q4-07	Q1-08	Jan-08	Feb-08	Mar-08
Current	99,573.4	49,965.1	26,390.1	23,218.2	26,436.6	8,528.7	8,742.4	9,165.5
	(8.3)	(10.9)	(0.8)	(12.0)	(-0.9)	(18.1)	(-19.7)	(7.0)
Capital	56,260.4	34,748.0	11,100.1	10,412.3	15,934.5	10,343.0	2,433.4	3,158.1
	(43.4)	(52.6)	(9.7)	(64.1)	(-3.7)	(542.6)	(-77.3)	(-25.1)
Total	155,833.8	84,713.1	37,490.2	33,630.5	42,371.1	18,871.7	11,175.8	12,323.6
	(18.8)	(24.9)	(3.3)	(24.2)	(-2.0)	(113.7))	(-48.3))	(-3.6)

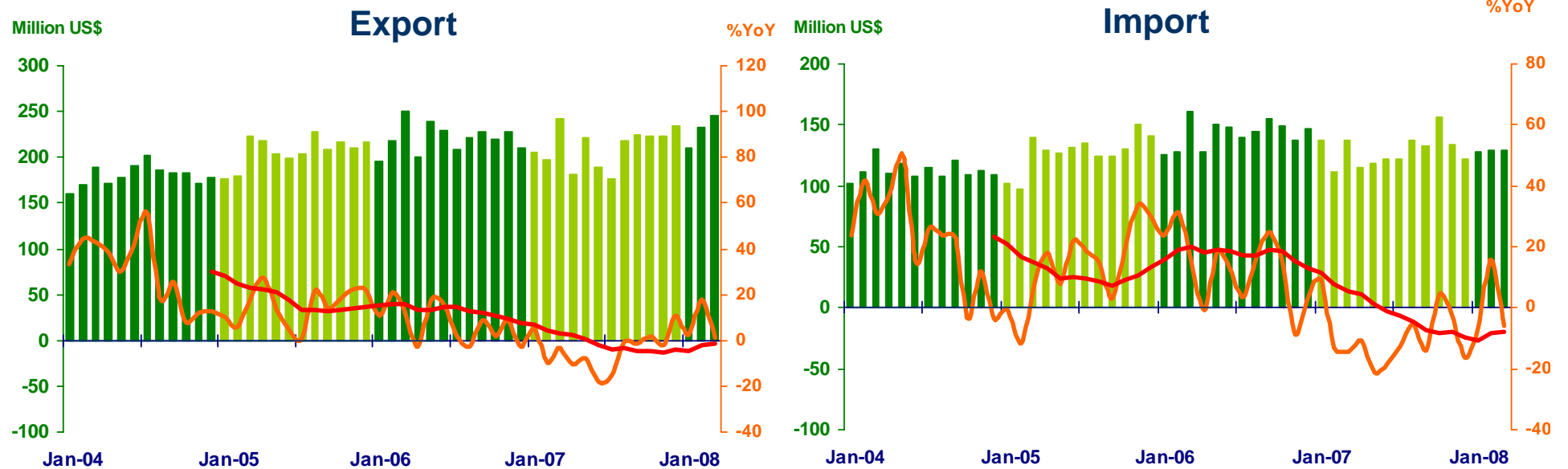




Foreign Trade

Economic Research Division, Northern Region Office

	2007	2007			2008			
		H1	Q3	Q4	Q1	Jan	Feb	Mar
EXPORTS	2,535.5	1,253.3	620.5	679.6	688.5	210.3	232.2	245.9
	(-4.3%)	(-7.4%)	(-5.5%)	(3.3%)	(6.7%)	(2.3%)	(17.9%)	(1.3%)
IMPORTS	1,546.7	740.9	392.8	412.9	386.8	128.4	129.0	129.4
	(-9.9%)	(-12.1%)	(-10.7%)	(-4.7%)	(0.1%)	(-6.3%)	(15.7%)	(-6.0%)
Trade Balance	988.8	494.4	227.7	266.7	301.7	81.9	101.1	116.5



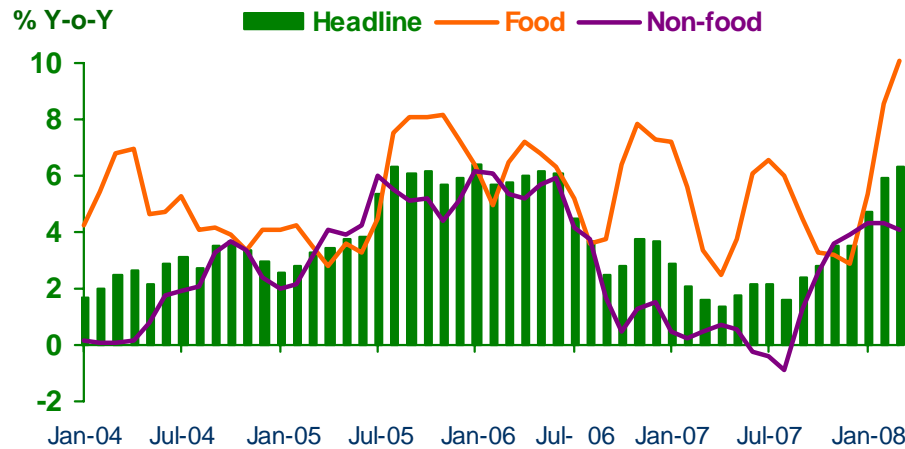
Sources: Customs Department



Price Level

Economic Research Division, Northern Region Office

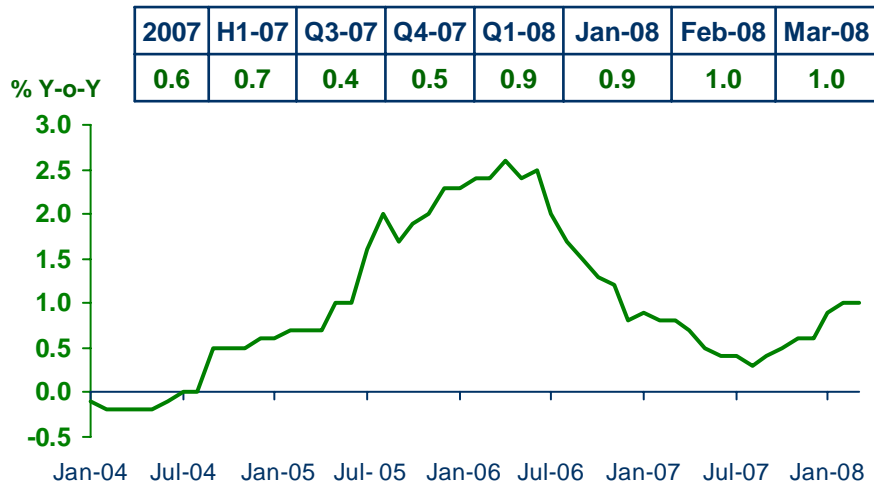
Headline Inflation



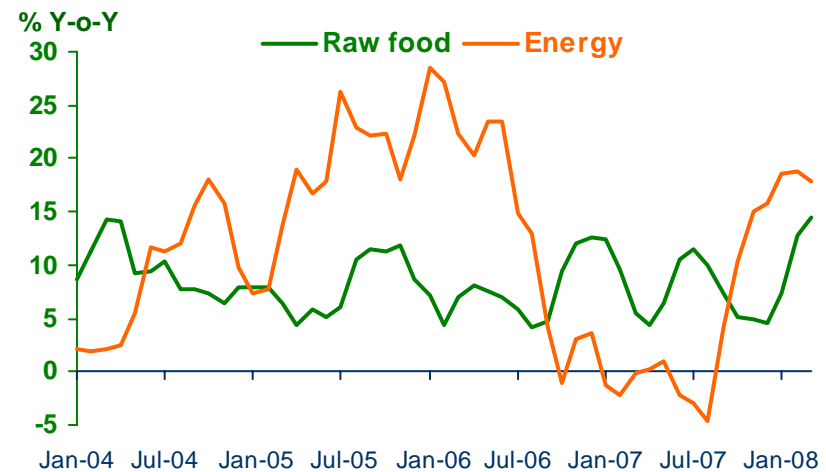
Headline inflation (2002 = 100)

%Y-o-Y	2007	2007			2008			
		H1-07	Q3-07	Q4-07	Q1-08	Jan-08	Feb-08	Mar-08
Headline	2.3	2.0	2.1	3.3	5.6	4.7	5.9	6.3
Food	4.6	4.7	5.7	3.2	8.0	5.4	8.6	10.1
Non-food	1.0	0.4	0.0	3.4	4.2	4.3	4.3	4.1

Core Inflation



Rawfood and Energy



Sources: Bureau of Trade and Economic Indices, Ministry of Commerce
 Note: Northern region's Core CPI data has been released since January 2002

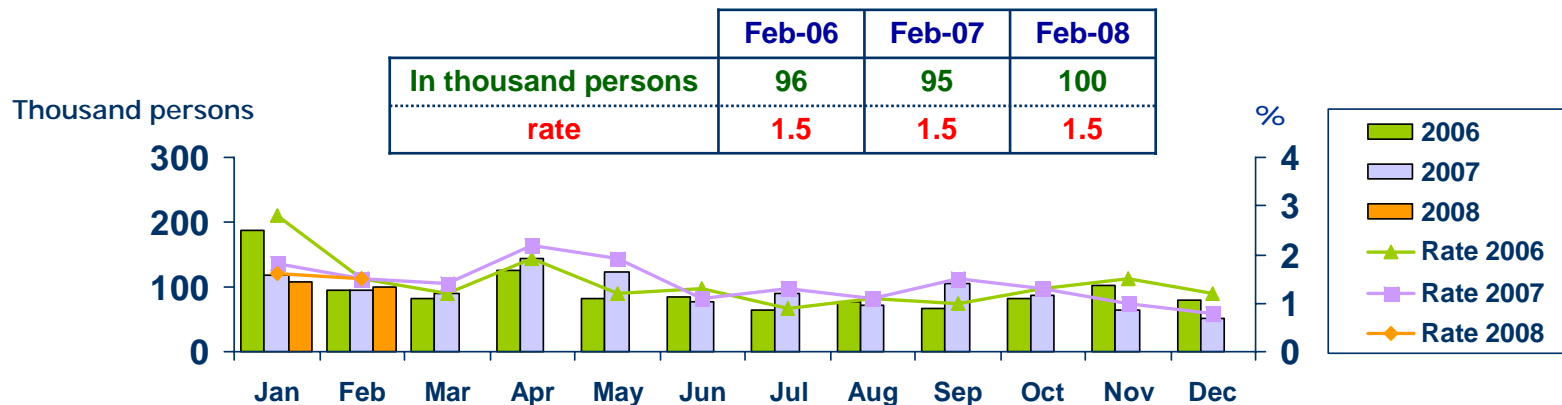


Labor Force Survey

Economic Research Division, Northern Region Office

	% of Total Labor Force (as of Feb 2008)	2006 ($\Delta\%$)	Q1-07 ($\Delta\%$)	Q2-07 ($\Delta\%$)	Q3-07 ($\Delta\%$)	Q4-07 ($\Delta\%$)	Jan-08 ($\Delta\%$)	Feb-08 ($\Delta\%$)
Labor Force (1,000 Persons)	100.0	6,741	6,534	6,756	6,732	6,716	6,579	6,510
Employed persons	96.8	0.3	0.6	3.5	3.0	0.1	0.0	-1.5
• Agriculture	43.9	4.5	-0.8	0.2	3.8	2.4	-3.7	-1.6
• Non-agriculture	52.9	-4.4	1.9	7.1	2.3	-2.6	3.3	-1.4
- Wholesale & retail trade	13.9	1.7	8.7	3.5	-7.1	-11.9	5.1	0.5
- Manufacturing	10.8	-3.5	-6.0	14.2	17.1	-2.9	-14.5	-6.1
- Construction	6.0	-18.7	-16.4	13.5	-5.3	-2.9	9.6	-10.1
- Hotel & restaurants Services	6.2	-15.1	20.4	-3.7	-10.2	2.9	28.4	7.1
- Others	16.0	-0.6	8.3	6.7	12.8	4.6	7.9	1.0
Unemployed persons	1.5	1.2	10.0	-10.2	57.0	-35.1	-9.5	5.8
Seasonally inactive persons	1.7	236.1	-49.5	93.9	-28.1	-27.9	-47.5	237.3

Unemployment



Source : National Statistical Office

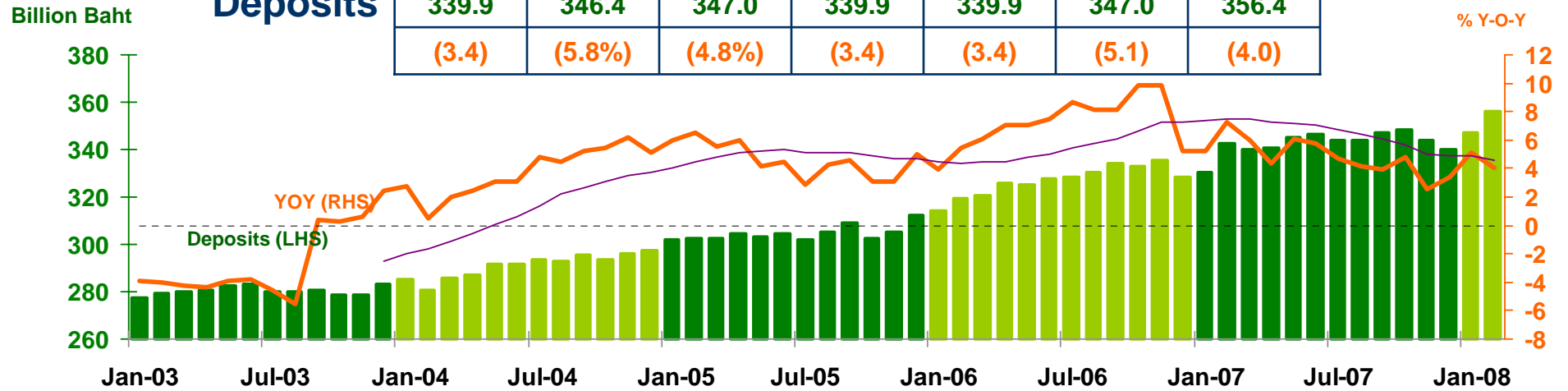


DEPOSITS AND CREDITS OF COMMERCIAL BANKS

Economic Research Division, Northern Region Office

Deposits

2007	H1-07	Q3-07	Q4-07	Dec-07	Jan-08	Feb-08
339.9	346.4	347.0	339.9	339.9	347.0	356.4
(3.4)	(5.8%)	(4.8%)	(3.4)	(3.4)	(5.1)	(4.0)



Credits

2007	H1-07	Q3-07	Q4-07	Dec-07	Jan-08	Feb-08
290.5	280.1	278.1	290.5	290.5	288.7	289.5
(5.8)	(8.3%)	(5.2%)	(5.8)	(5.8)	(5.6)	(6.1)

