



เศรษฐกิจการเงินภาคเหนือ

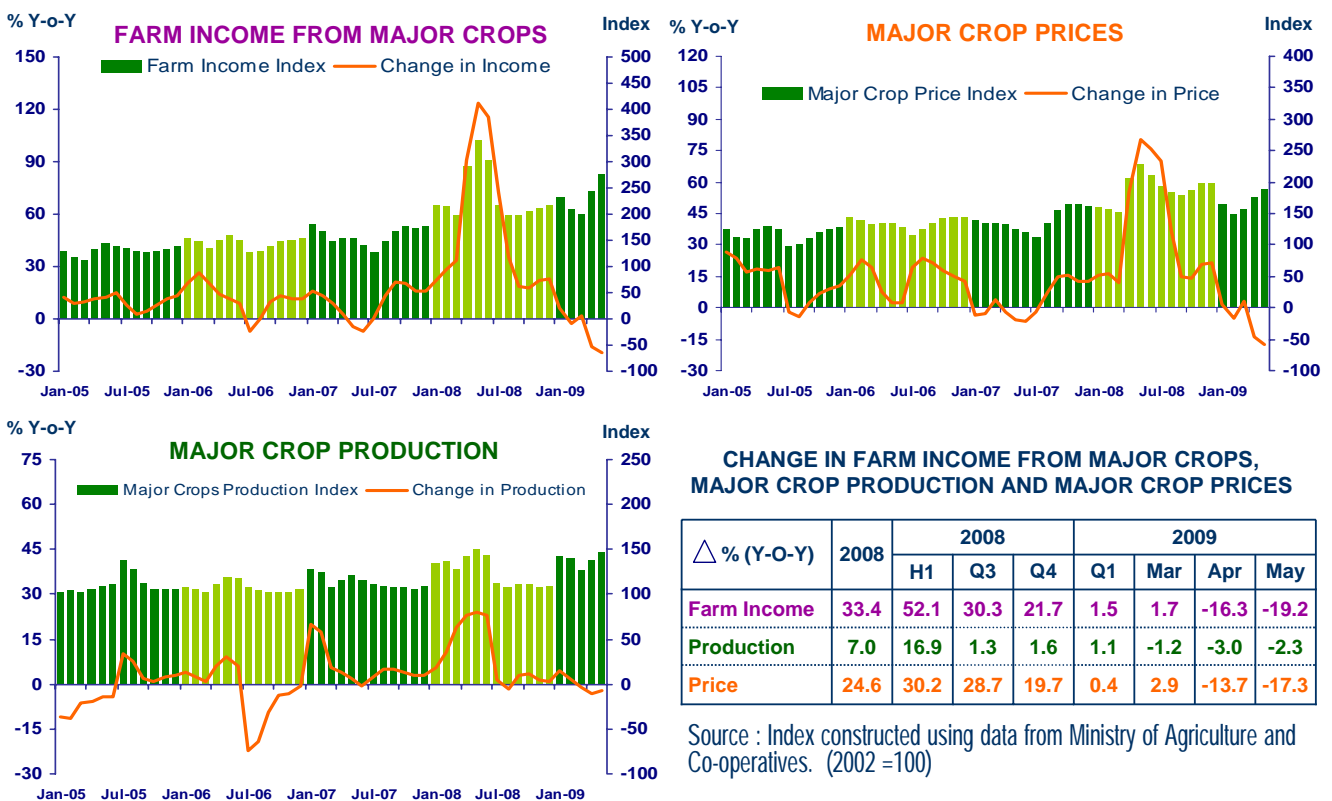
เดือนพฤษภาคม 2552

ธนาคารแห่งประเทศไทย สำนักงานภาคเหนือ



FARM INCOME FROM MAJOR CROPS

Regional Economy Division, Northern Region Office.

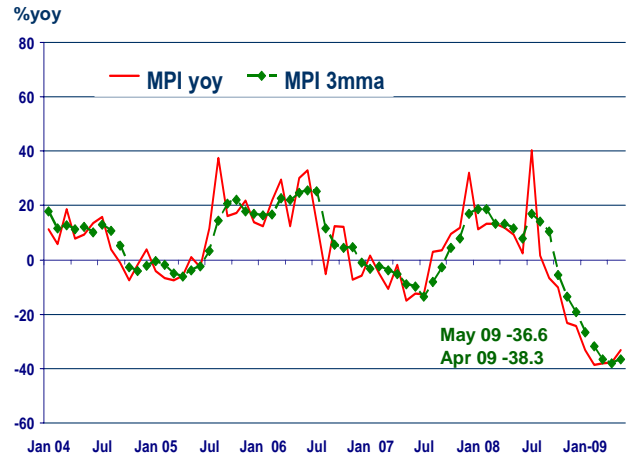
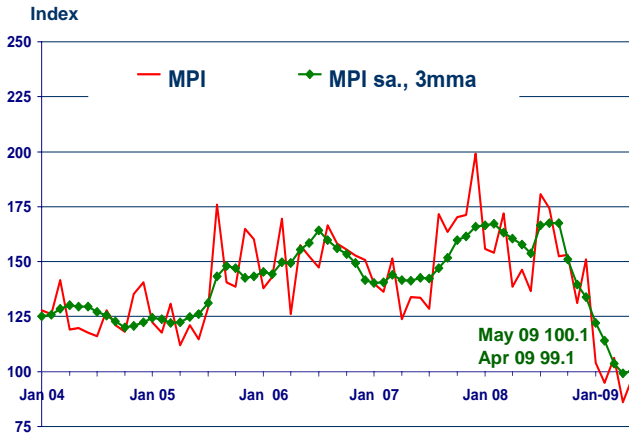




MANUFACTURING

Regional Economy Division, Northern Region Office.

	2008	H1-08	Q3-08	Q4-08	Q1-09	Mar-09	Apr-09	May-09 ^P
MPI level	153.9	150.6	169.2	145.1	100.8	106.3	86.2	97.5
MPI %yoy	1.3%	10.3%	9.5%	-19.4%	-37.2%	-38.1%	-37.9%	-33.3%
MPI, level s.a.	-	-	-	-	n.a	99.4	98.4	103.3
% mom SA series	-	-	-	-	n.a	-0.7%	-1.0%	5.1%

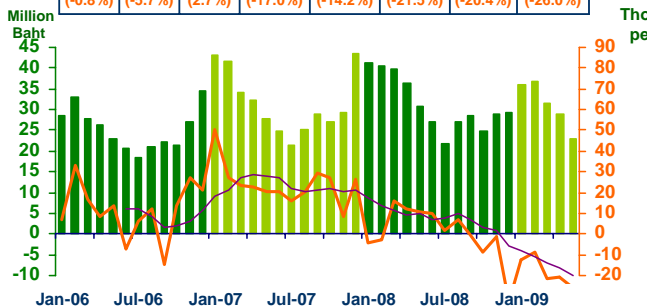


SERVICES

Regional Economy Division, Northern Region Office.

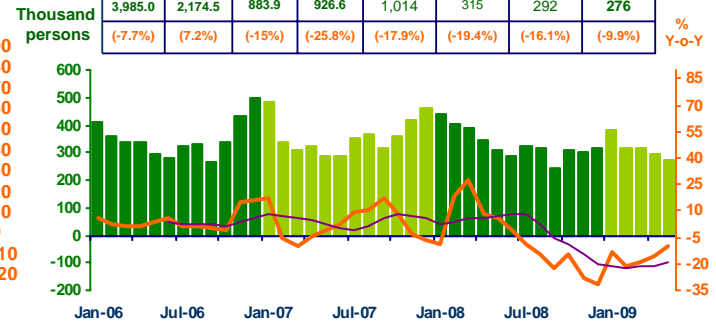
Hotel and restaurant VAT

2008	H1-08	Q3-08	Q4-08	Q1-09	Mar-09	Apr-09	May-09
376.2	215.5	77.5	83.0	104	31.4	28.8	22.8
(-0.8%)	(-5.7%)	(2.7%)	(-17.0%)	(-14.2%)	(-21.5%)	(-20.4%)	(-26.0%)



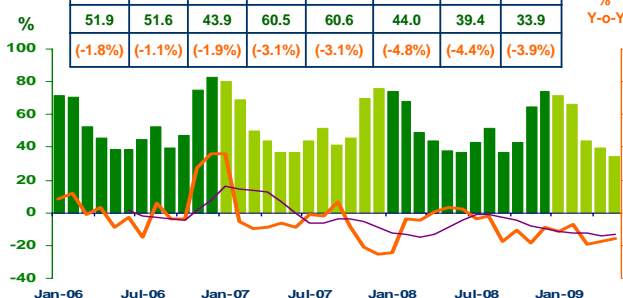
Air passengers

2008	2008				2009		
	H1	Q3	Q4	Q1	Mar	Apr	May
3,985.0	2,174.5	883.9	926.6	1,014	315	292	276
(-7.7%)	(7.2%)	(-15%)	(-25.8%)	(-17.9%)	(-19.4%)	(-16.1%)	(-9.9%)



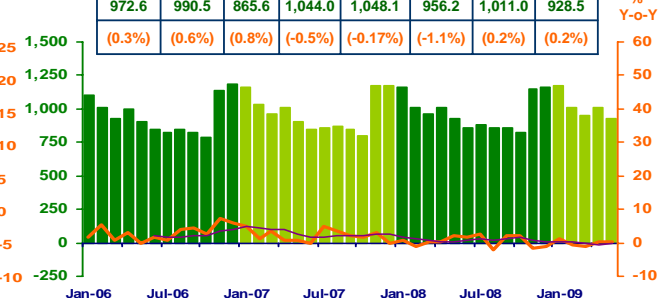
Hotel occupancy rate

2008	H1-08	Q3-08	Q4-08	Q1-09	Mar-09	Apr-09	May-09
51.9	51.6	43.9	60.5	60.6	44.0	39.4	33.9
(-1.8%)	(-1.1%)	(-1.9%)	(-3.1%)	(-3.1%)	(-4.8%)	(-4.4%)	(-3.9%)



Hotel average room rate

2008	H1-08	Q3-08	Q4-08	Q1-09	Mar-09	Apr-09	May-09
972.6	990.5	865.6	1,044.0	1,048.1	956.2	1,011.0	928.5
(0.3%)	(0.6%)	(0.8%)	(-0.5%)	(-0.17%)	(-1.1%)	(0.2%)	(0.2%)



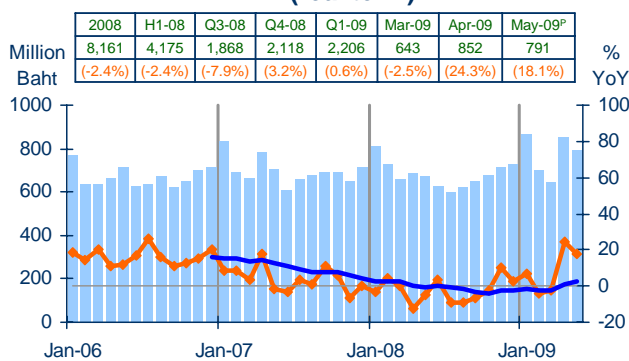
Sources: Ministry of Finance; Airports of Thailand Public Company Limited.; and Data Management Group, Bank of Thailand



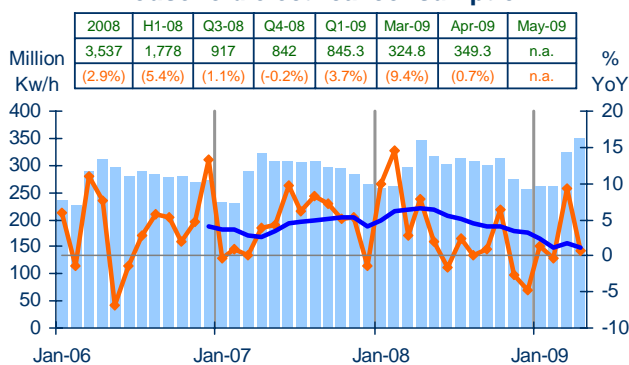
PRIVATE CONSUMPTION

Regional Economy Division, Northern Region Office.

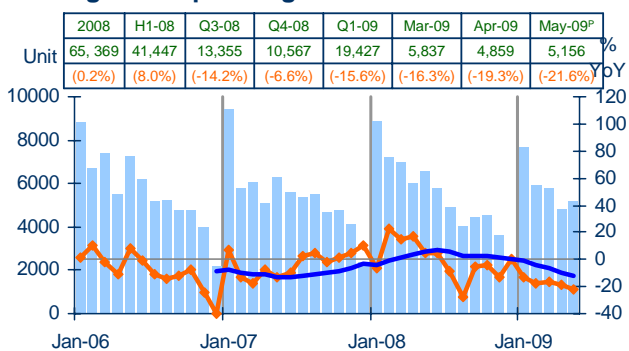
VAT (real term)



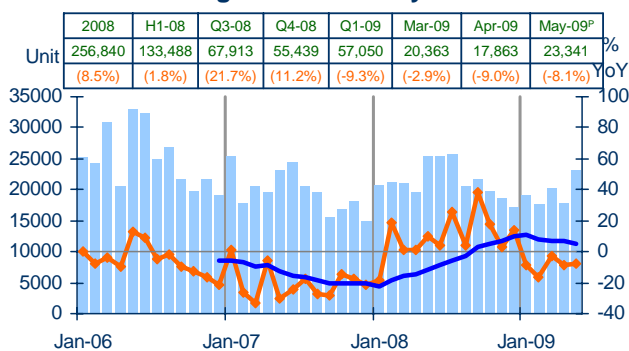
Household electrical consumption



Registered passenger and commercial cars



Registered motorcycles



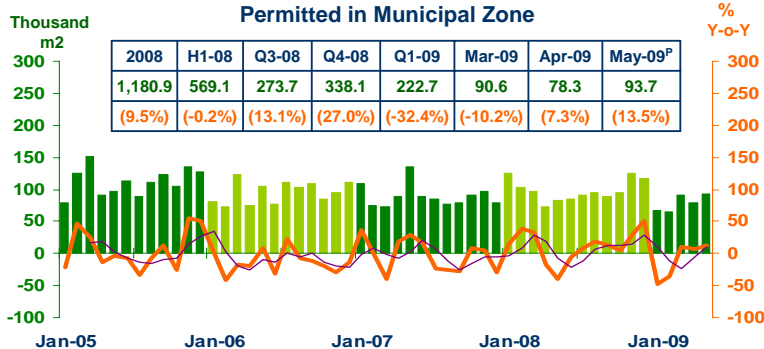
Sources: Ministry of Finance, Provincial Electricity Authority, Provincial Land Transportation Offices



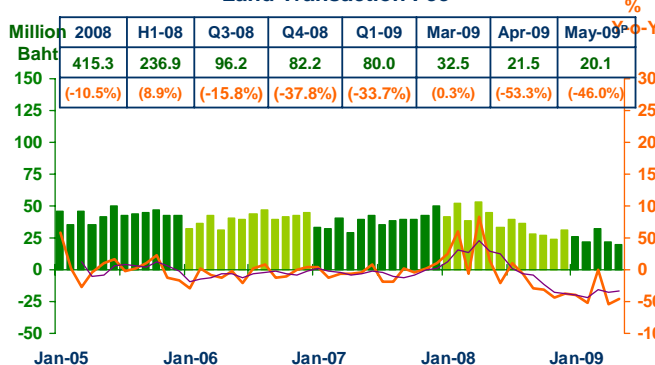
Private Investment

Regional Economy Division, Northern Region Office.

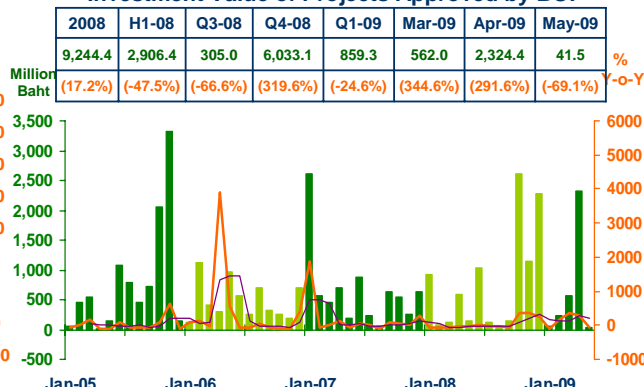
Construction Areas Permitted in Municipal Zone



Land Transaction Fee



Investment Value of Projects Approved by BOI



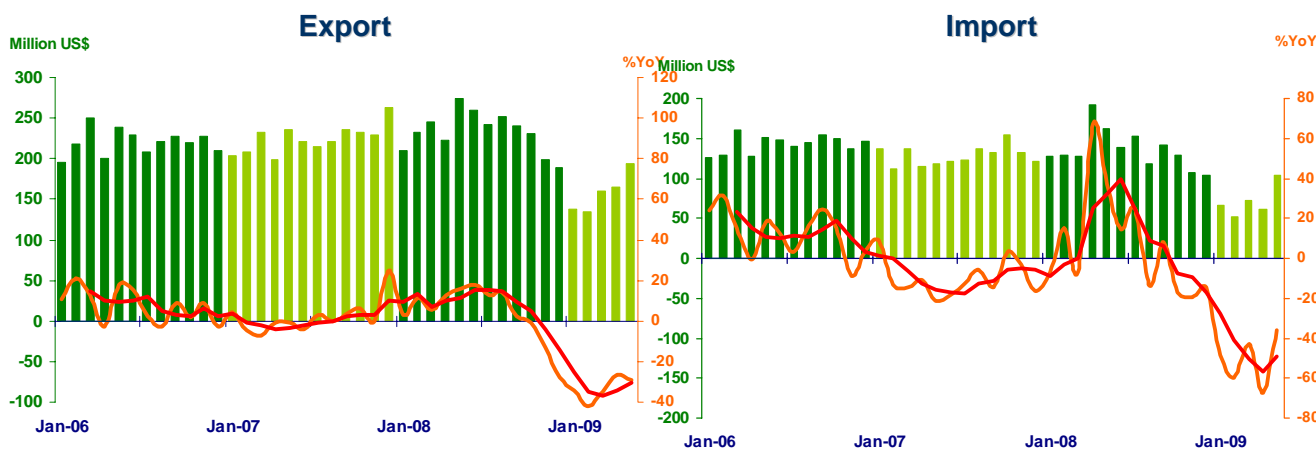
Sources: Cement Thai Plc. and Jalapathan Cement Plc.; Municipality Offices; Provincial Land Offices; Customs Department; Northern Region Investment and Economic Center (BOI)



Foreign Trade

Regional Economy Division, Northern Region Office.

	2008	2008			2009			
		H1	Q3	Q4	Q1	Mar	Apr	May
EXPORTS	2,798.9 (3.7%)	1,446.0 (11.1%)	734.9 (9.4%)	618.0 (-14.7%)	432.3 (-37.2%)	159.7 (-35.0%)	164.5 (-26.5%)	194.6 (-29.0%)
IMPORTS	1,627.9 (5.7%)	875.2 (18.3%)	413.1 (5.8%)	339.6 (-17.1%)	189.6 (-50.6%)	72.8 (-43.1%)	62.1 (-67.6%)	103.5 (-35.9%)
Trade Balance	1,171.0	570.8	321.8	278.4	242.7	86.9	102.3	91.1



Sources: Customs Department

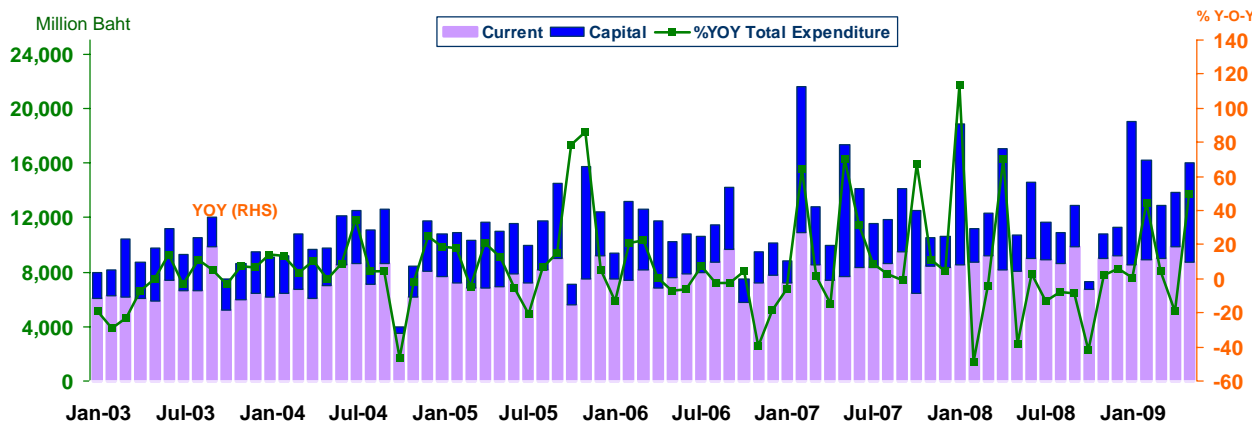


การเบิกจ่ายเงินงบประมาณผ่านคลังจังหวัดในภาคเหนือ

Regional Economy Division, Northern Region Office.

Actual Expenditures

Expenditure	2008	2008			2009			
		H1	Q3	Q4	Q1	Mar	Apr	May
Current	103,852.4 (4.2)	51,625.9 (3.3)	27,330.0 (3.5)	24,896.4 (7.2)	26,387.3 (-0.3)	8,962.5 (-2.3)	9,849.9 (20.9)	8,703.5 (8.2)
Capital	45,555.7 (-18.9)	33,051.0 (-4.8)	8,071.5 (-27.1)	4,433.3 (-57.4)	21,690.3 (36.4)	3,921.6 (24.7)	3,974.2 (-55.2)	7,310.3 (174.6)
Total	149,408.0 (-4.1)	84,676.9 (0.0)	35,401.5 (-5.6)	29,329.8 (-12.8)	48,077.6 (13.5)	12,884.1 (4.5)	13,824.1 (-18.8)	16,013.8 (49.5)



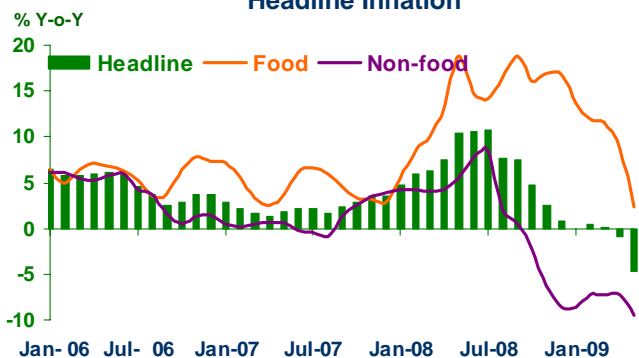
Source: Ministry of Finance



Price Level

Regional Economy Division, Northern Region Office.

Headline Inflation

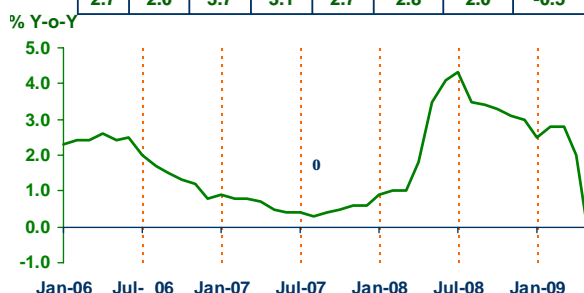


Headline inflation (2007 = 100)

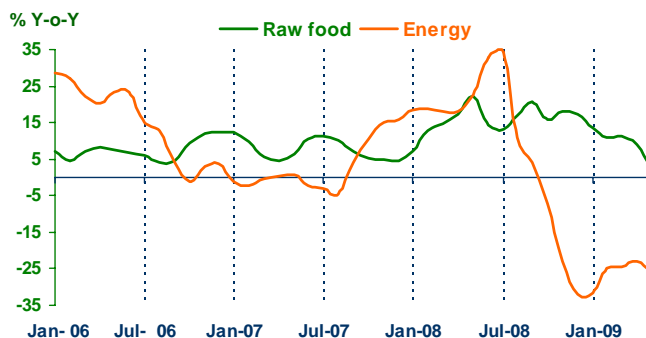
	2008	2008			2009			
		H1	Q3	Q4	Q1	Mar	Apr	May
Headline	6.0	8.3	8.7	2.8	0.2	0.2	-0.9	-4.6
Food	14.2	11.8	16.4	16.7	12.4	11.6	8.7	2.4
Non-food	2.0	5.0	3.8	-5.8	-7.7	-7.3	-7.3	-9.5

Core Inflation

2008	H1-08	Q3-08	Q4-08	Q1-09	Mar-09	Apr-09	May-09
2.7	2.0	3.7	3.1	2.7	2.8	2.0	-0.5



Rawfood and Energy



Sources: Bureau of Trade and Economic Indices, Ministry of Commerce
 Note: Northern region's Core CPI data has been released since January 2002

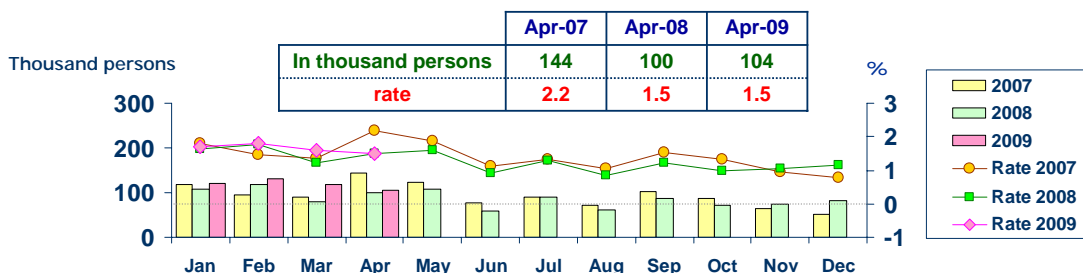


Labor Force Survey

Regional Economy Division, Northern Region Office.

	% of Total Labor Force (as of Apr 2009)	2008 (Δ%)	Q1-08 (Δ%)	Q2-08 (Δ%)	Q3-08 (Δ%)	Q4-08 (Δ%)	Mar-09 (Δ%)	Apr-09 (Δ%)
Labor Force (1,000 Persons)	100.0	7,181	6,629	6,642	7,134	7,181	7,071	7,132
Employed persons	97.8	6.6	1.4	-1.1	6.3	6.6	6.5	7.6
• Agriculture	39.2	-0.8	-0.1	-9.5	1.9	-0.8	0.4	0.8
• Non-agriculture	58.6	16.2	2.7	7.5	10.6	16.2	11.6	12.6
- Wholesale & retail trade	15.9	35.3	0.1	12.4	11.6	35.3	11.8	13.3
- Manufacturing	11.3	8.8	-3.7	-15.7	-10.8	8.8	17.7	1.1
- Construction	9.5	26.2	2.2	-4.6	19.2	26.2	24.5	8.8
- Hotel & restaurants Services	6.4	0.9	-3.0	14.6	12.4	0.9	8.2	37.6
- Others	15.5	7.2	12.6	24.7	21.0	7.2	2.3	15.1
Unemployed persons	1.5	57.8	-10.3	-21.0	-15.9	57.8	46.0	4.2
Seasonally inactive persons	0.7	-40.3	43.5	-83.0	-2.4	-40.3	-36.8	-19.7

Unemployment



Source : National Statistical Office



DEPOSITS AND CREDITS OF COMMERCIAL BANKS

Regional Economy Division, Northern Region Office.

