

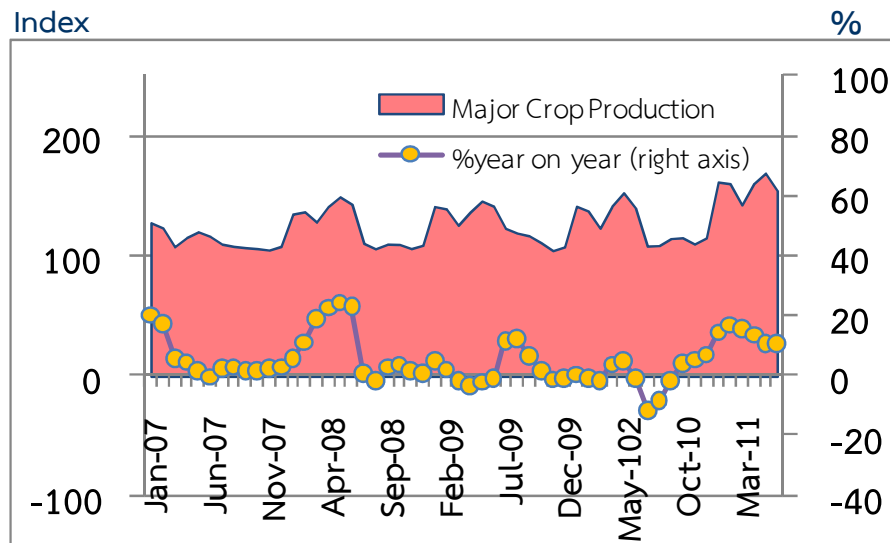
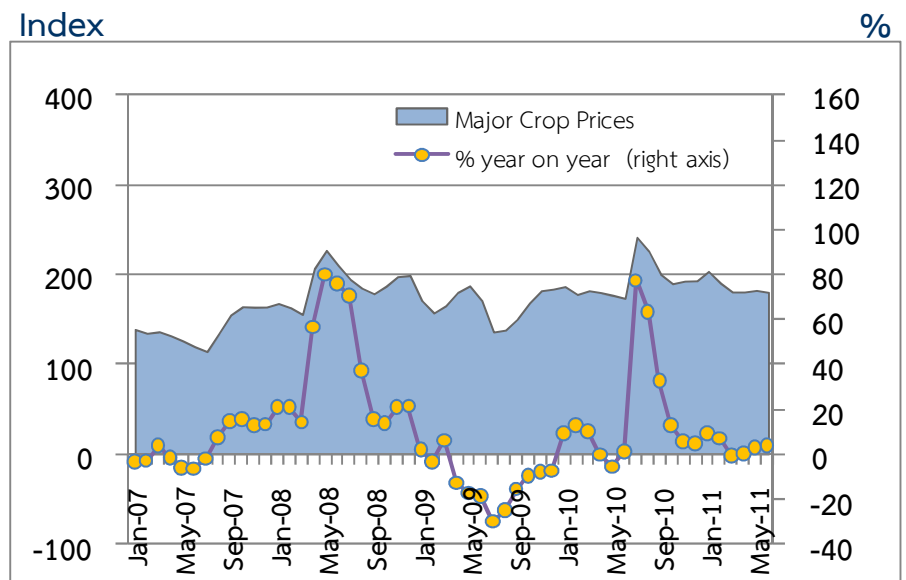
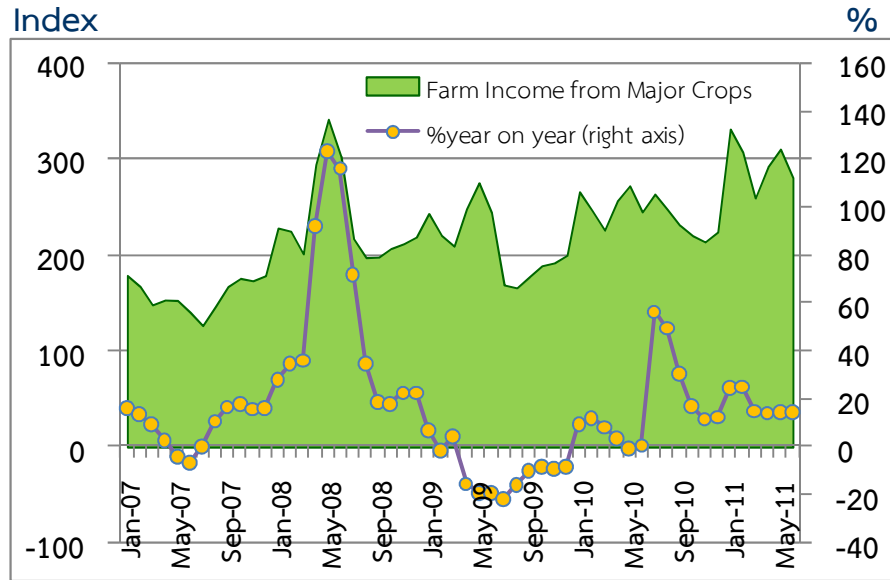


แถลงข่าวเศรษฐกิจการเงินภาคเหนือ  
เดือนมิถุนายน และ ไตรมาส 2 ปี 2554



# Farm Income from Major Crops

Regional Economic Division, Northern Region Office



CHANGE IN FARM INCOME FROM MAJOR CROPS,  
MAJOR CROP PRODUCTION AND MAJOR CROP PRICES

% (Y-O-Y)	2010	2011					
		H1	H1	Q1	Q2	May	Jun
Farm Income	13.9	6.6	18.0	20.2	14.0	14.0	14.5
Production	1.6	0.2	14.6	15.7	12.5	10.7	10.3
Price	12.2	6.4	3.0	3.9	1.4	3.0	3.8

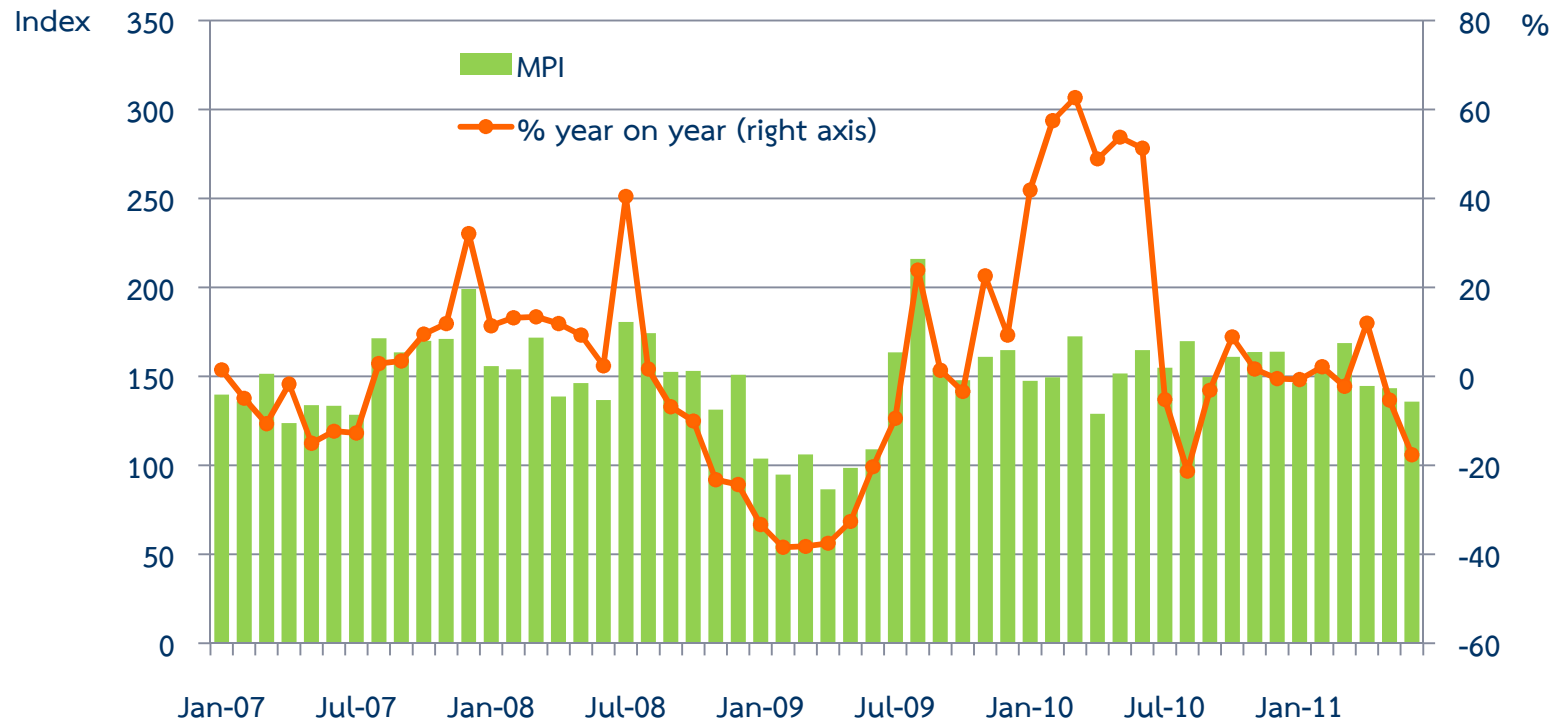
Source : Index constructed using data from Ministry of Agriculture and Co-operatives. (2002 =100)



# Manufacturing Production Index

Regional Economic Division, Northern Region Office

	2010	2010		2011				
		H1	H2	H1 <sup>P</sup>	Q1	Q2 <sup>P</sup>	May	Jun <sup>P</sup>
MPI level	156.6	152.5	160.6	148.7	155.8	141.6	144.4	135.8
%YoY	16.9%	52.7%	-4.4%	-2.5%	-0.4%	-4.7%	-4.8%	-17.6
MPI level, SA	-	-	-	-	170.3	160.4	161.3	153.3
% MoM,%QoQ S.A.	-	-	-	-	18.2%	-5.8%	-10.8%	-4.9%



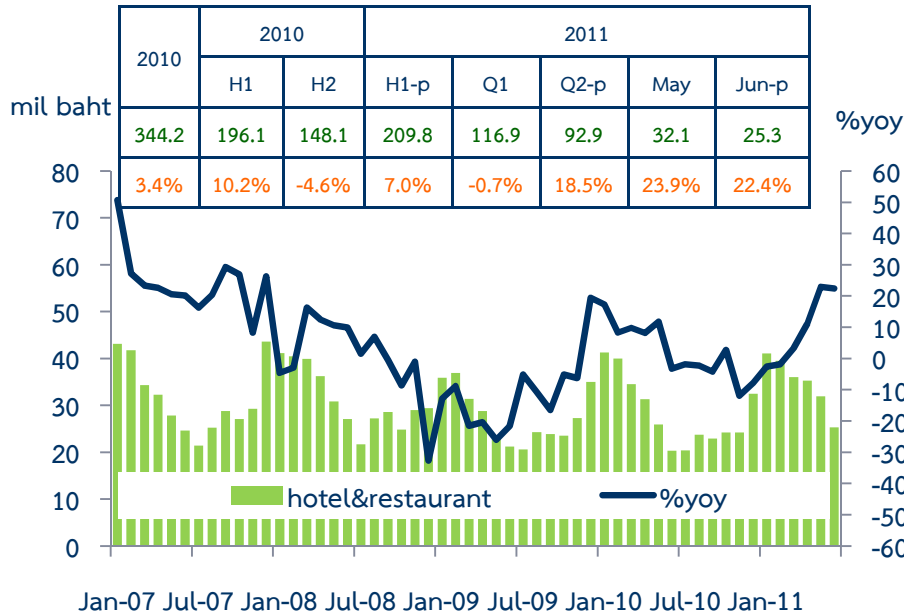
Source: Bank of Thailand, Northern Region Office



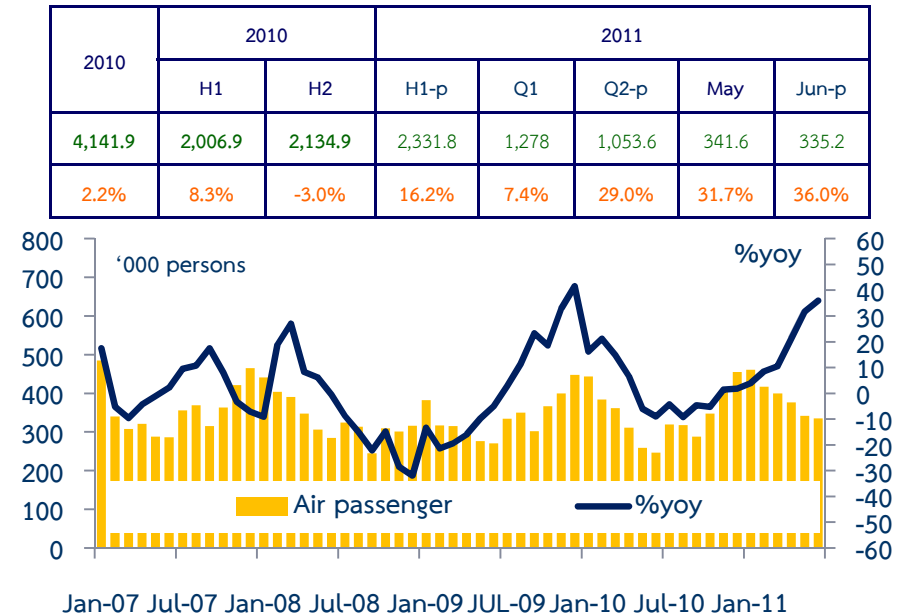
# Tourism

Regional Economic Division, Northern Region Office

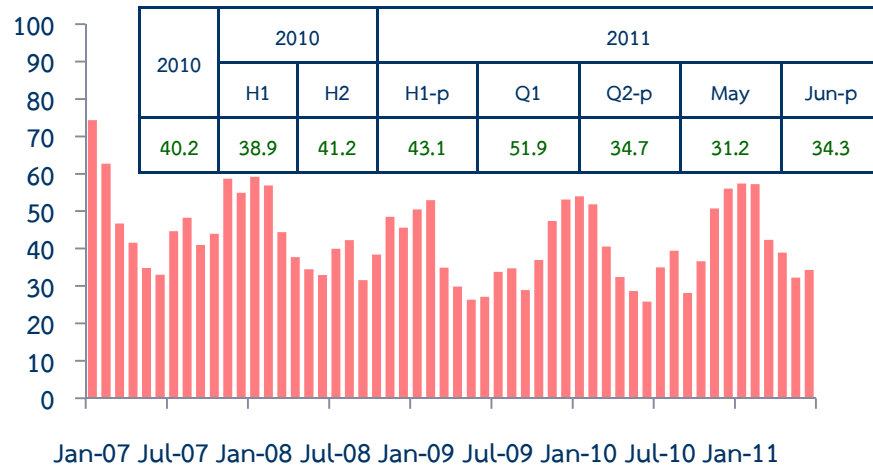
### Hotel and restaurant VAT



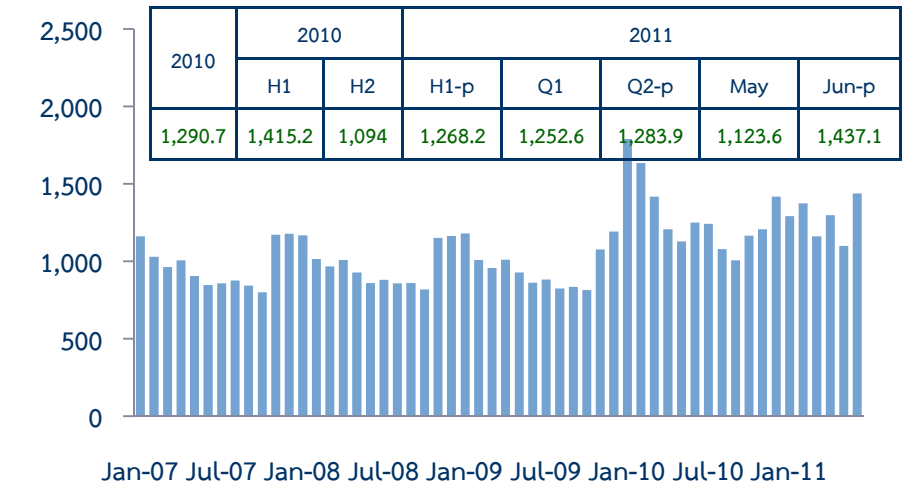
### Air passengers



### Hotel occupancy rate



### Hotel average room rate

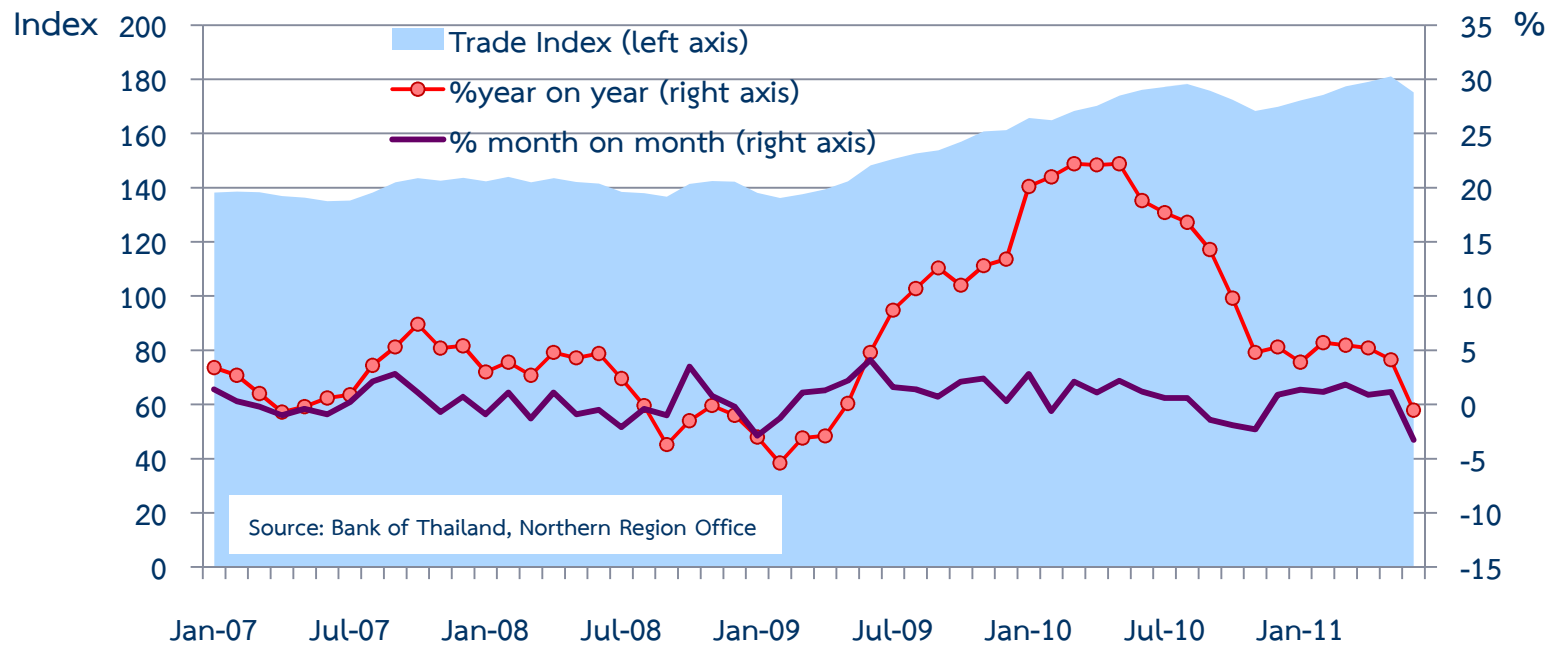




# Trade Index

Regional Economic Division, Northern Region Office

	Weight	2010	2010		2011				
			H1	H2	H1	Q1	Q2 <sup>P</sup>	May-11	Jun-11 <sup>P</sup>
Trade Index	100%	171.8	169.9	173.7	176.6	174.7	178.5	181.1	175.2
% year on year (%yoy)		15.9	21.0	11.3	3.9	5.0	2.9	4.1	-0.5
Motor Vehicles/Cycles Trade	46.0%	167.7	164.2	171.3	177.3	173.9	180.6	182.4	176.8
% yoy		16.9	21.1	13.1	8.0	7.6	8.3	9.3	5.2
Wholesale Trade	21.0%	197.7	195.6	199.8	197.7	197.8	197.6	207.6	187.2
% yoy		17.9	23.0	13.3	1.1	6.5	-3.8	0.4	-12.5
Retail Trade	33.0%	163.5	163.9	163.1	164.3	163.3	165.3	165.2	166.5
% yoy		13.4	19.8	7.6	0.3	0.6	-0.1	-0.5	-0.2

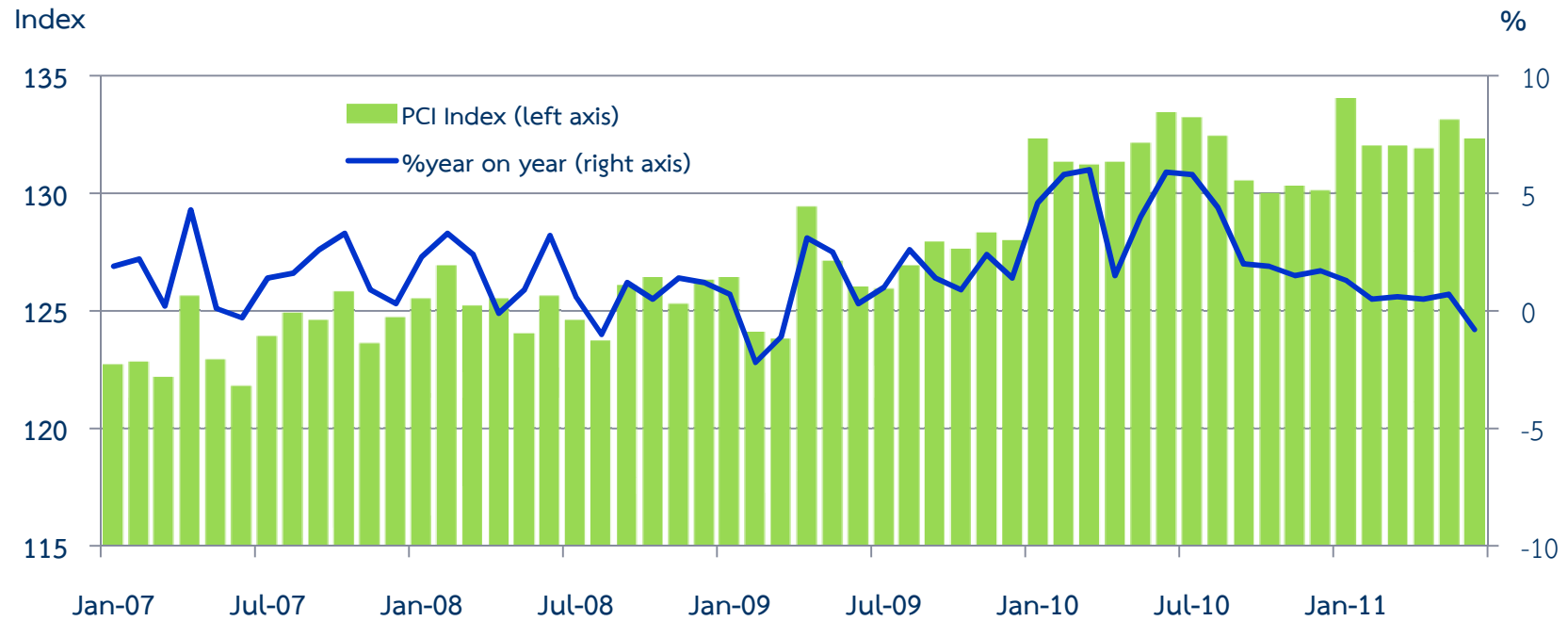




# Private Consumption Index (Seasonally Adjusted)

Regional Economic Division, Northern Region Office

	2010	2010		2011				
		H1	H2	H1 <sup>P</sup>	Q1	Q2 <sup>P</sup>	May	Jun <sup>P</sup>
PCI	131.5	131.9	131.1	132.5	132.7	132.4	133.1	132.3
% year on year	3.7	4.6	2.9	0.5	0.8	0.1	0.7	-0.8
%month on month, %quarter on quarter		3.5	-0.7	1.1	2.0	-0.2	0.9	-0.6



Source: Bank of Thailand, Northern Region Office

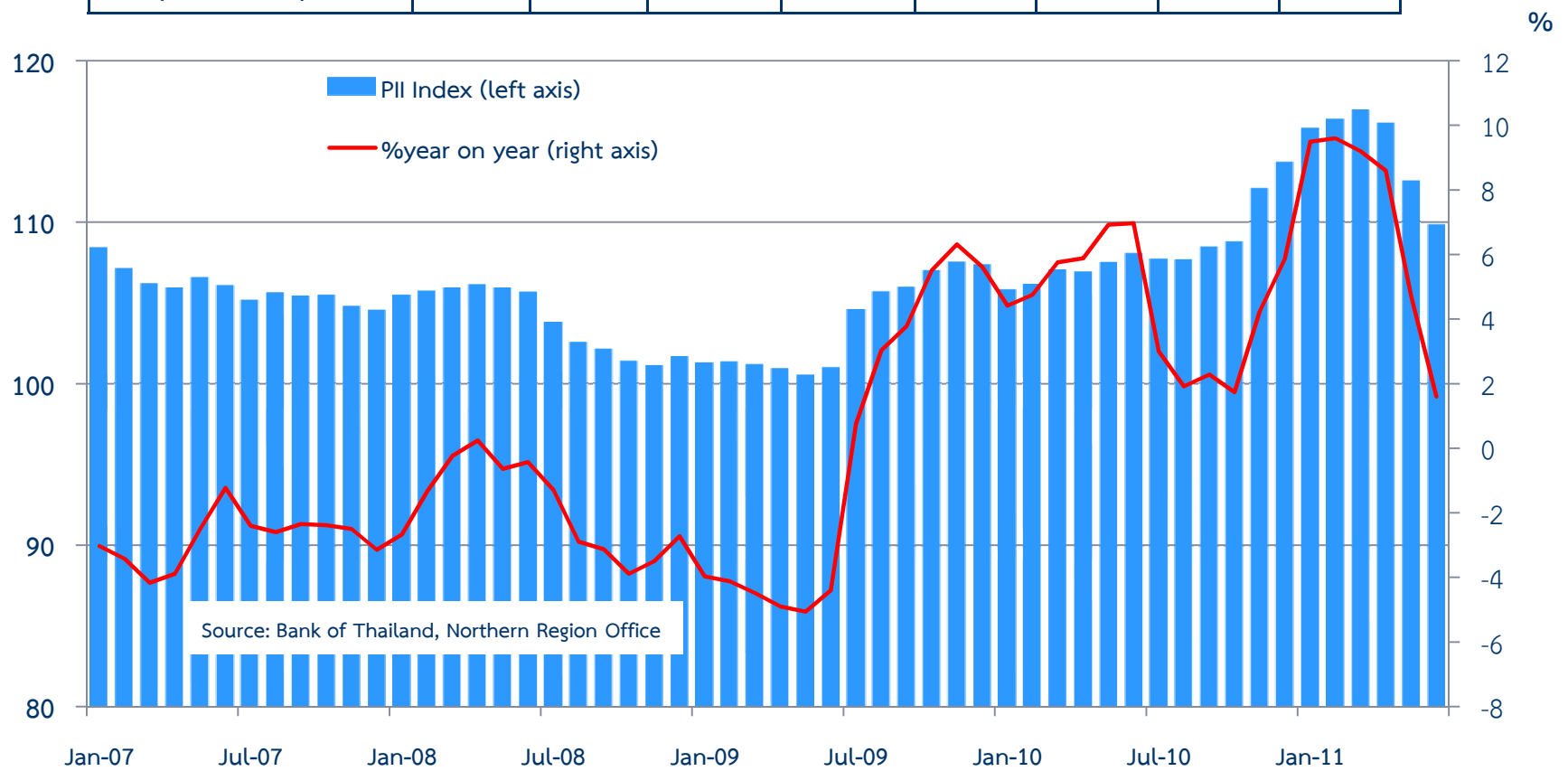


# Private Investment Index (Seasonally Adjusted)

Regional Economic Division, Northern Region Office

	2010	H1-10	H2-10	H1-11	Q1-11	Q2-11	May-11	Jun-11
PII	108.3	106.9	109.7	114.5	116.3	112.8	112.5	109.8
%year on year	4.4	5.8	3.2	7.2	9.4	5.0	4.7	1.6
%month on month, %quarter on quarter	4.4	0.5	2.7	4.4	4.3	-3.0	-3.1	-2.4

Index



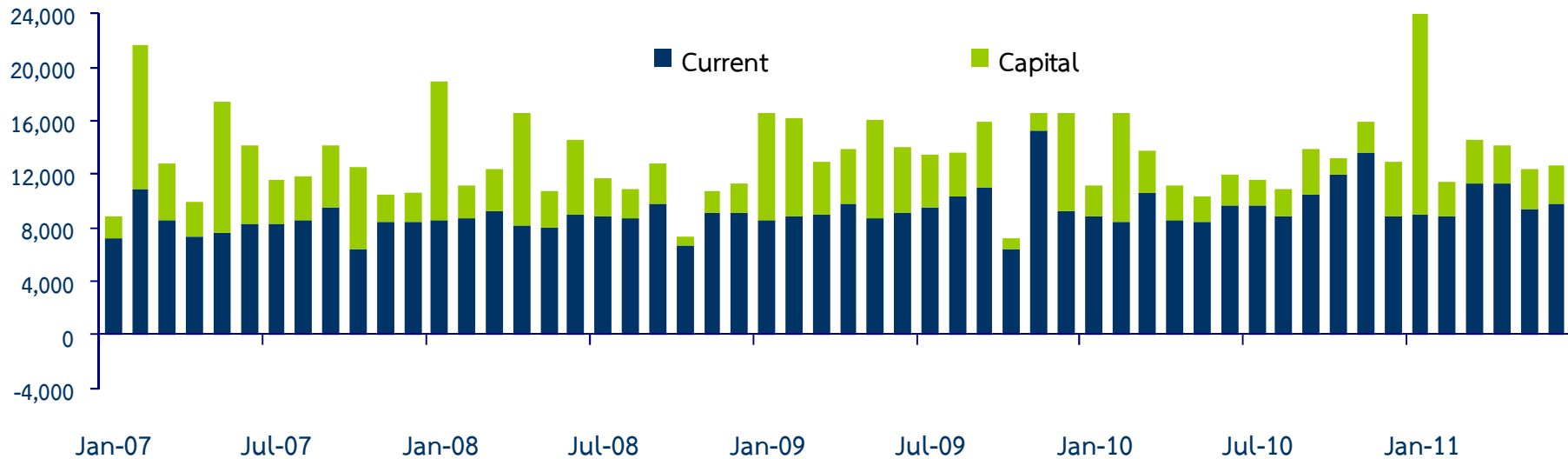


# Public Expenditure

Regional Economic Division, Northern Region Office

Expenditure	2010	2010		2011				
		H1	H2	H1	Q1	Q2	May	Jun
Current	118,153.8	54,705.8	63,447.9	59,518.6	29,028.8	30,489.8	9,397.4	9,789.0
% year on year	(2.1)	(1.3)	(2.8)	(8.8)	(4.0)	(13.8)	(10.8)	(1.1)
Capital	37,599.8	22,838.0	14,761.9	29,881.4	21,169.3	8,712.0	3,005.6	2,914.6
% year on year	(-39.4)	(-39.8)	(-38.6)	(30.8)	(31.1)	(30.1)	(61.9)	(26.0)
Total	155,753.6	77,543.8	78,209.8	89,400.0	50,198.2	39,201.8	12,403.0	12,703.6
% year on year	(-12.4)	(-15.7)	(-8.8)	(15.3)	(13.9)	(17.1)	(20.0)	(5.9)

Million Baht





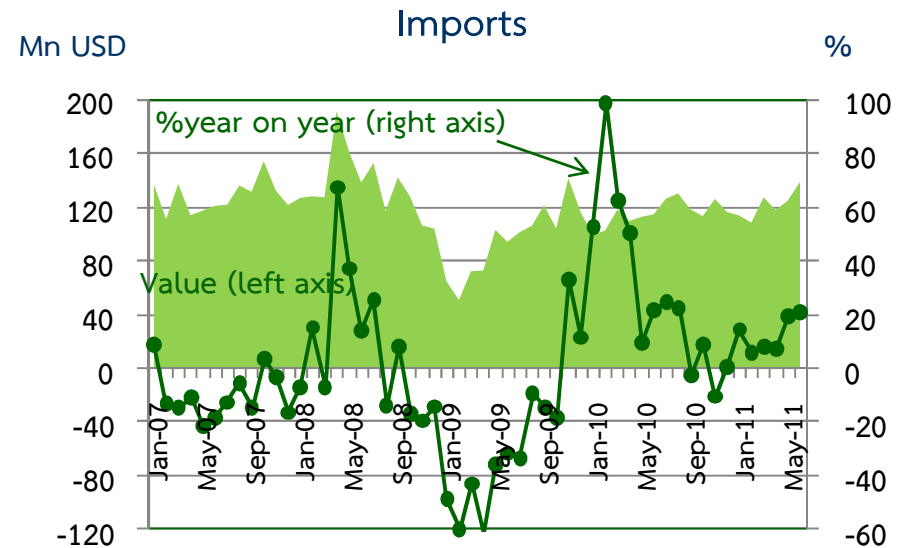
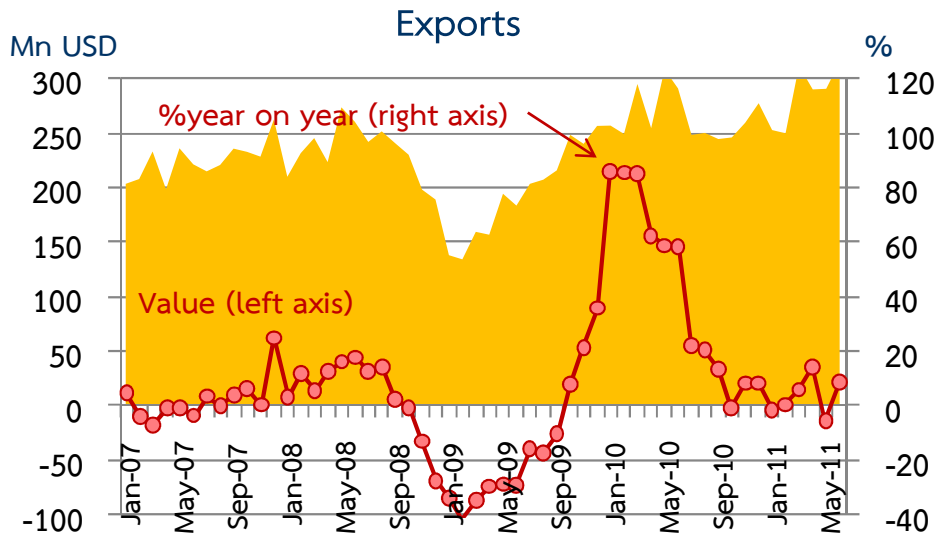


# Foreign Trade

Regional Economic Division, Northern Region Office

	2010	2010		2011				
		H1	H2	H1	Q1	Q2	May	Jun
EXPORTS	3,184.5	1,656.7	1,527.9	1,711.9	815.0	896.8	291.0	315.6
	36.1%	71.2%	11.3%	3.3%	1.6%	4.9%	-5.7%	8.4%
IMPORTS	1,384.5	651.6	733.0	733.1	350.5	382.6	125.3	139.1
	19.9%	41.2%	5.8%	12.5%	9.1%	15.8%	19.1%	21.0%
Trade Balance	1,800.0	997.1	794.9	978.7	464.5	514.2	165.7	176.5

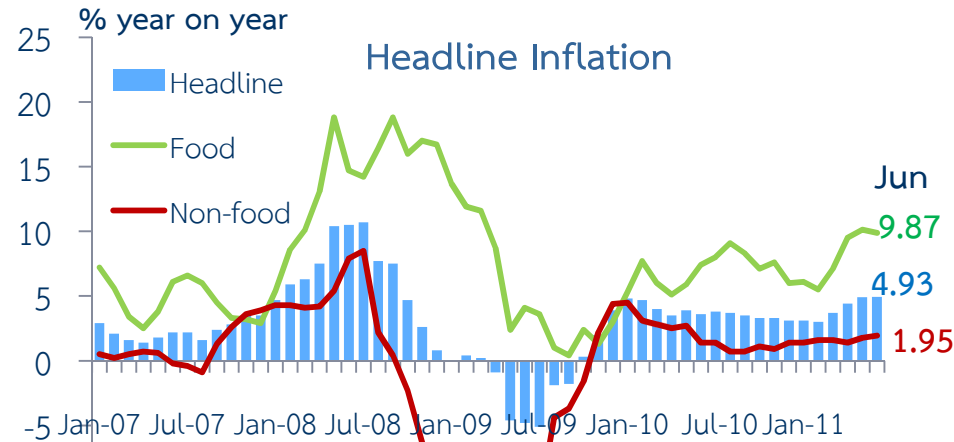
Sources: Customs Department



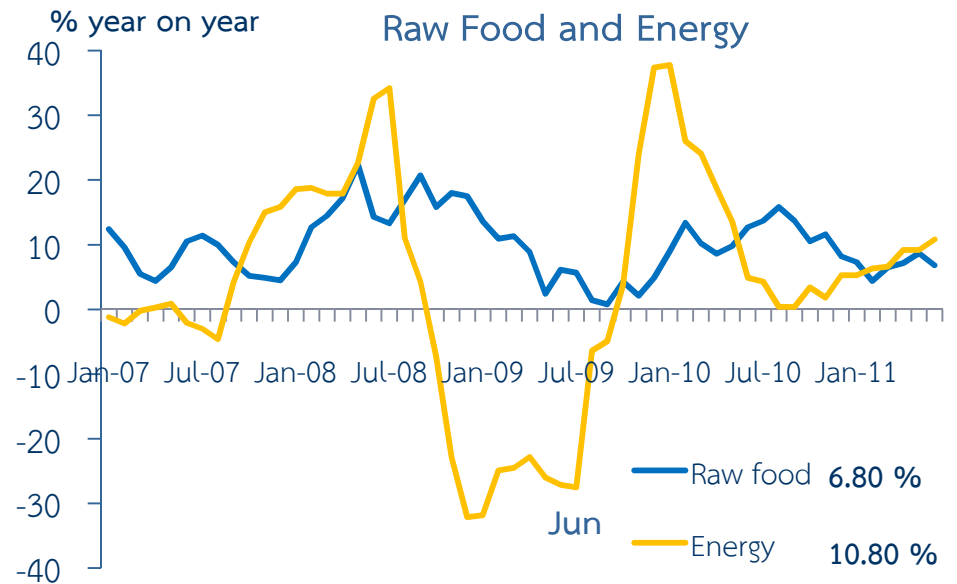
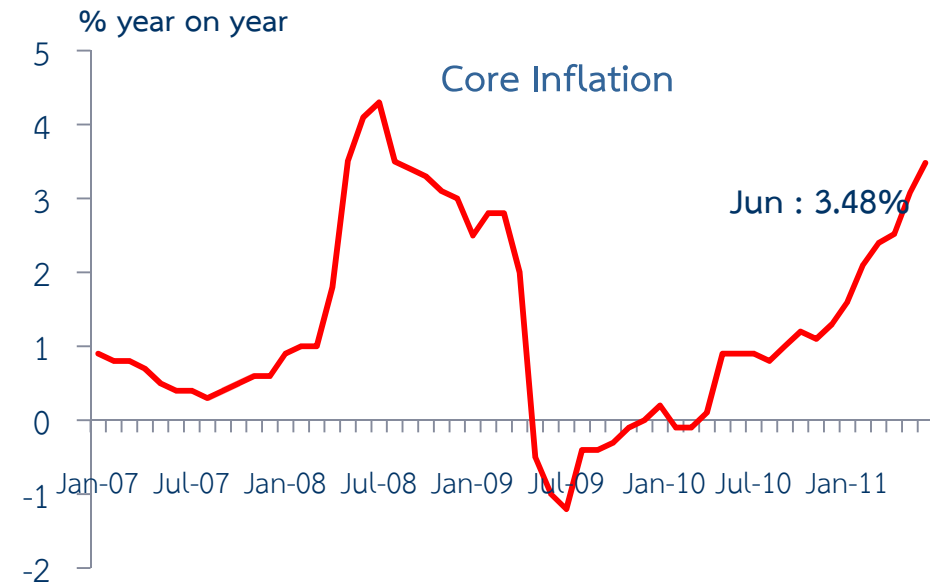


# Inflation

Regional Economic Division, Northern Region Office



	2009	2010	2010		2011				
			H1	H2	H1	Q1	Q2	May	Jun
Headline	-1.1	3.7	4.1	3.4	4.0	3.28	4.74	4.90	4.93
Food	5.1	7.0	6.2	7.7	8.1	6.25	9.85	10.14	9.87
Non-food	-5.6	1.9	2.9	1.0	1.6	1.54	1.71	1.77	1.95
Core	0.5	0.7	0.3	1.1	2.5	2.02	3.03	3.08	3.48



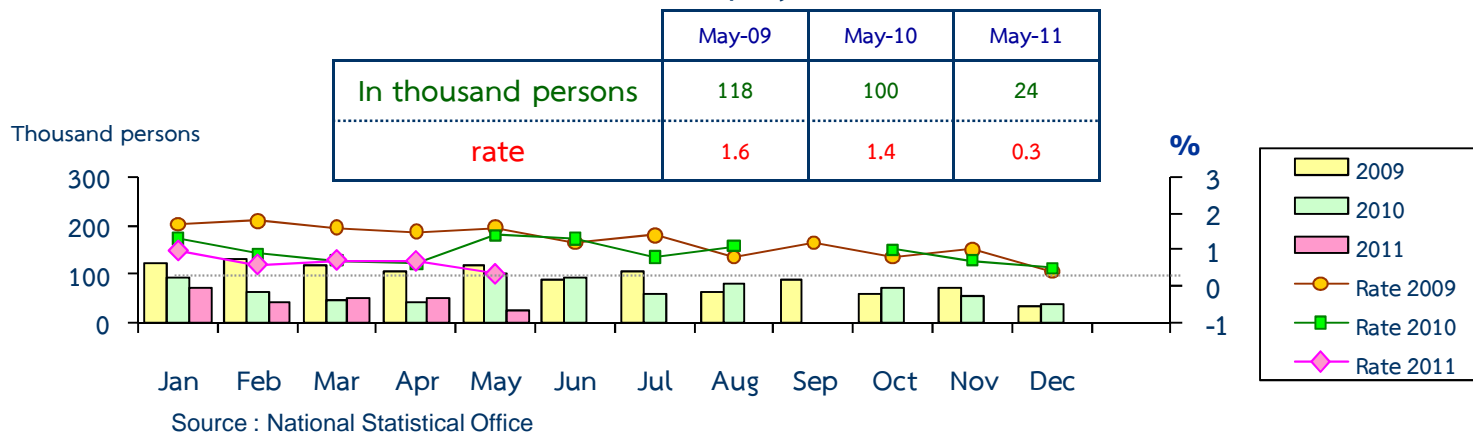


# Labor Force Survey

Regional Economic Division, Northern Region Office

	% of Total Labor Force (as of May 2011)	2010 ( $\Delta$ %)	H1-10 ( $\Delta$ %)	H2-10 ( $\Delta$ %)	Q3-10 ( $\Delta$ %)	Q4-10 ( $\Delta$ %)	Q1-11 ( $\Delta$ %)	Apr-11 ( $\Delta$ %)	May-11 ( $\Delta$ %)
Labor Force (1,000 Persons)	100.0	7,232	7,176	7,287	7,266	7,308	7,249	7,145	7,160
Employed persons	99.1	0.6	1.3	0.7	-0.2	1.5	1.1	-0.8	1.9
• Agriculture	43.2	-0.7	0.4	-1.8	-5.0	1.6	1.7	9.8	5.7
• Non-agriculture	55.9	2.5	2.0	3.0	4.5	1.5	0.6	-8.5	-0.8
- Wholesale & retail trade	14.1	2.5	4.7	0.3	-2.9	3.6	0.8	-7.7	-12.2
- Manufacturing	11.1	0.8	0.8	0.8	6.1	-4.3	-11.7	-24.3	16.0
- Construction	8.7	1.7	2.6	0.6	5.5	-3.8	2.2	-15.5	-8.0
- Hotel & restaurants Services	4.4	5.9	6.5	5.2	4.2	6.2	-16.7	-16.1	-31.3
- Others	17.6	-6.4	-1.8	-11.0	-26.2	3.6	15.8	9.6	18.2
Unemployed persons	0.3	-27.2	-35.8	-13.4	-20.5	-2.3	-18.1	13.5	-76.1
Seasonally inactive persons	0.6	73.7	88.5	30.7	350.1	-50.0	-30.6	-58.1	-24.7

## Unemployment





# Deposits and Credits of Commercial Banks

Regional Economic Division, Northern Region Office

