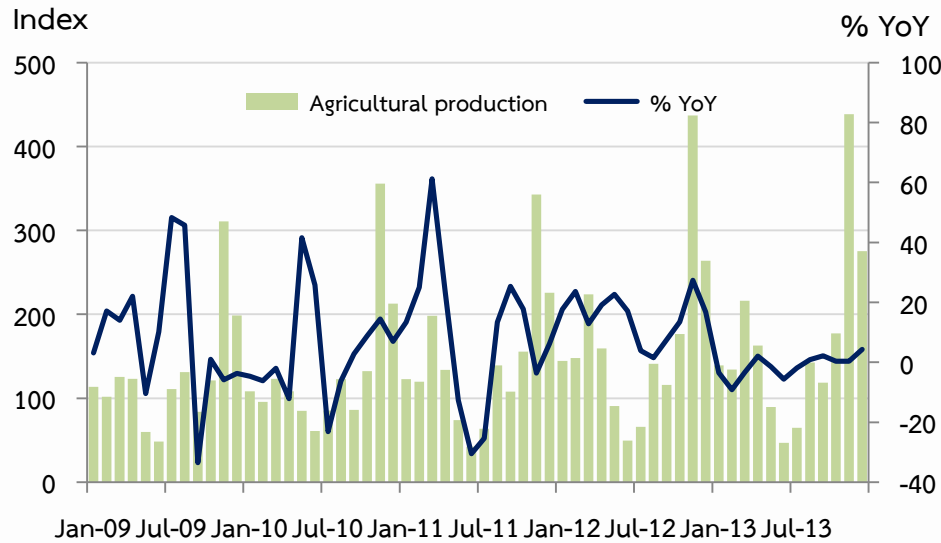
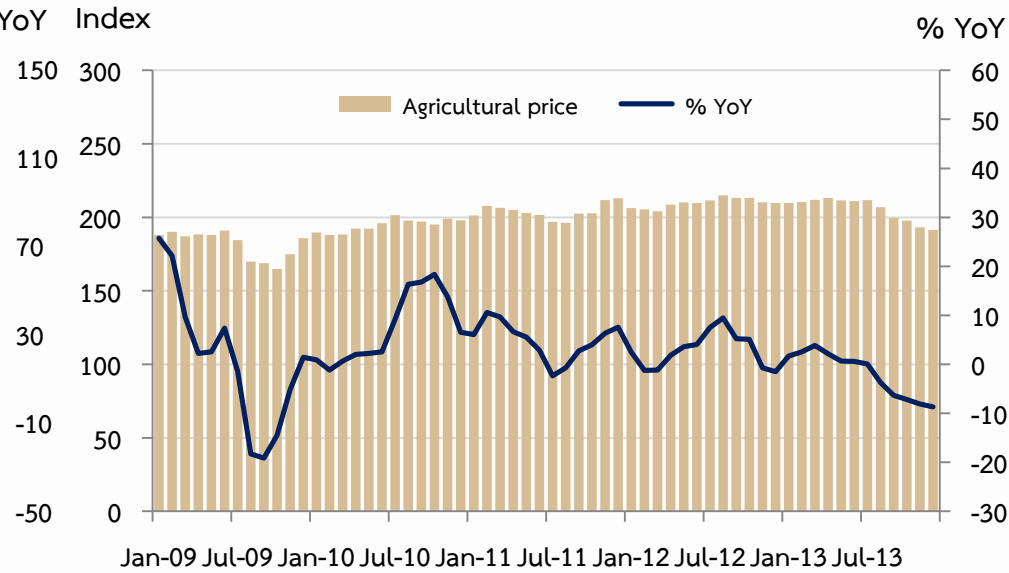
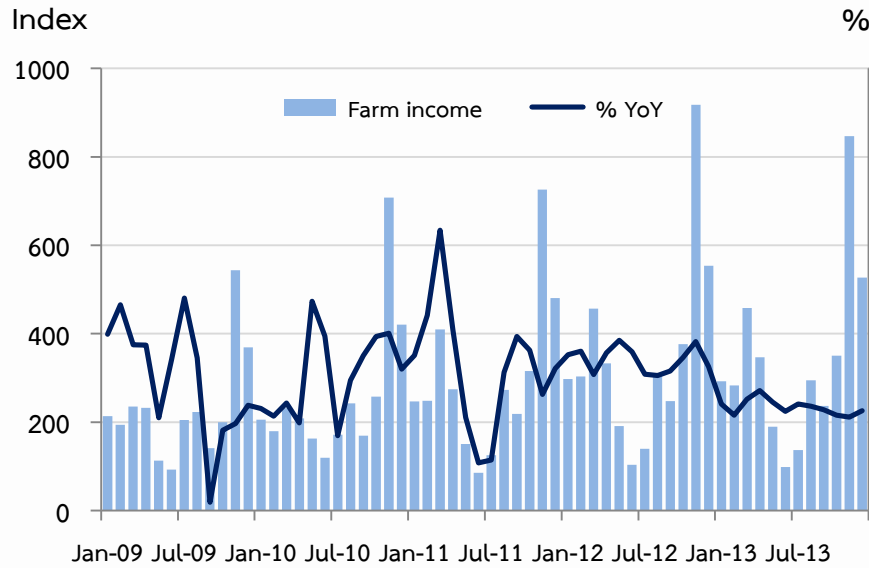




ธนาคารแห่งประเทศไทย
BANK OF THAILAND

ภาวะเศรษฐกิจการเงินภาคเหนือ เดือนธันวาคม 2556



% YoY	2012 ^R	2013 ^P	2013					
			H1 ^R	H2 ^P	Q3 ^R	Q4 ^P	Nov ^R	Dec ^P
Farm Income	20.1	-3.2	-1.5	-4.4	-3.0	-6.5	-7.8	-4.8
Production	16.8	-1.2	-3.3	1.4	0.4	1.7	0.4	4.3
Price	2.8	-1.9	1.9	-5.7	-3.3	-8.0	-8.1	-8.7

P = Preliminary data , R = Revised data

Note : 1. farm income includes cost of production.

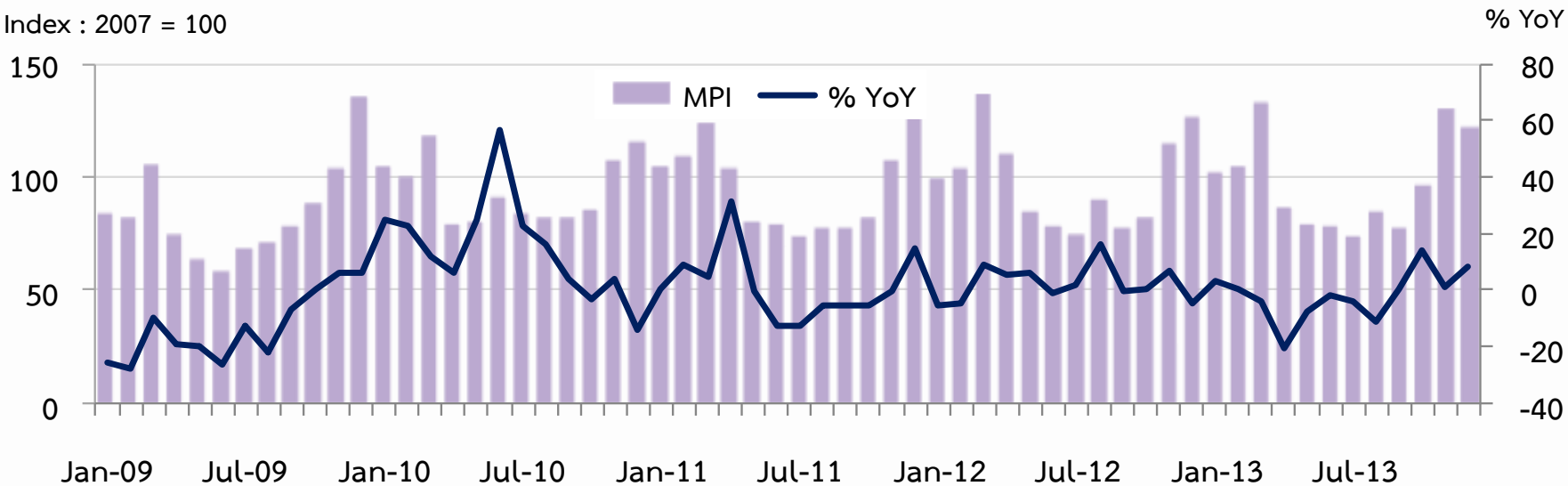
2. price excludes compensation and subsidies by government.



	2012	2013 ^E	2013					
			H1	H2 ^E	Q3	Q4 ^E	Nov ^R	Dec ^E
MPI level	98.7	96.7	96.4	96.9	78.0	115.7	129.5	121.5
% YoY	3.6	-1.5	-4.5	1.6	-5.5	7.1	1.2	8.4
MPI level, SA	-	-	-	-	93.2	103.2	112.6	88.9
% MoM, % QoQ, SA	-	-	-	-	1.1	10.6	4.2	-21.1

E = Estimate data, R = Revised data

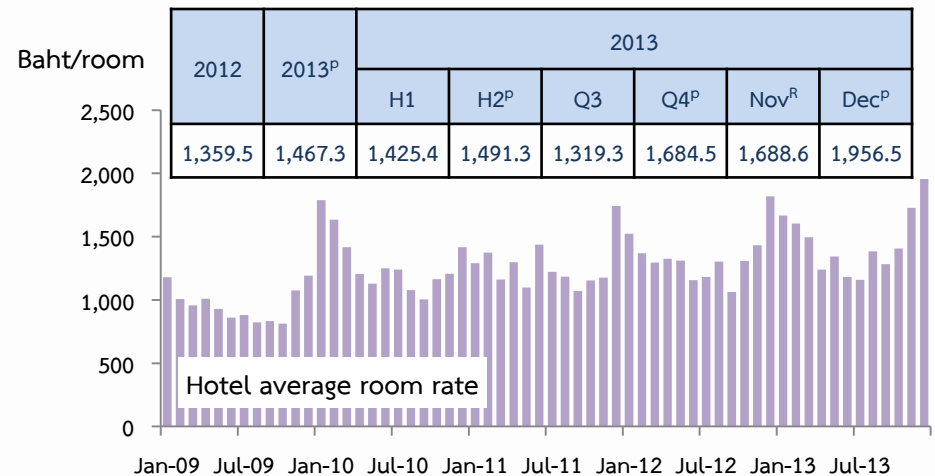
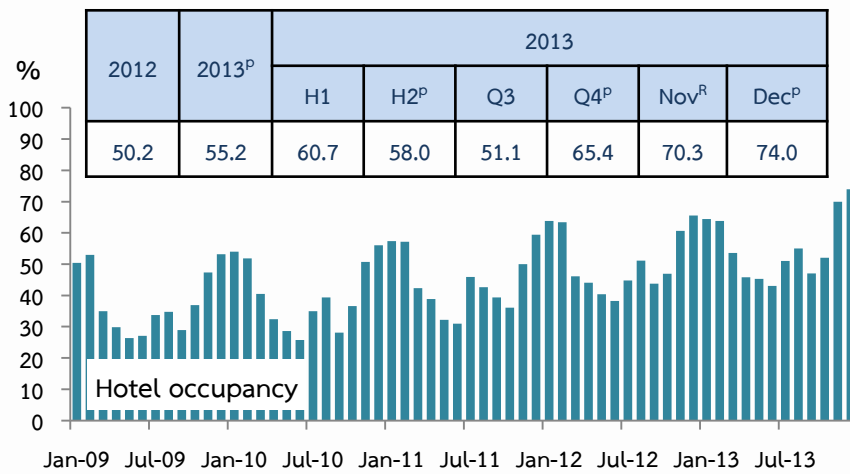
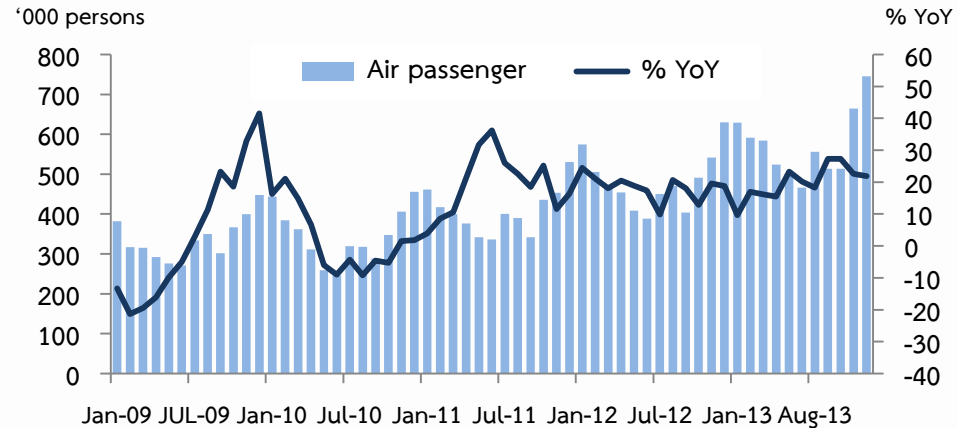
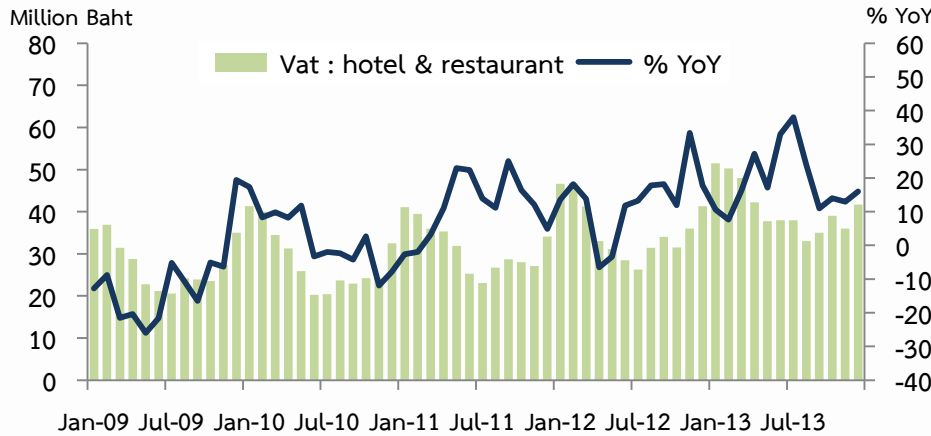
Index : 2007 = 100





2012	2013	2013					
		H1	H2	Q3	Q4	Nov	Dec ^P
421.7	492.9	271.5	221.4	104.8	116.1	35.6	41.7
12.1 %	16.9 %	16.0 %	18.0 %	14.4 %	14.5 %	13.0 %	16.0 %

2012	2013	2013					
		H1	H2	Q3	Q4	Nov	Dec
5,817.5	6,899.2	3,296.1	3,603.1	1,599.5	2,003.6	664.2	745.5
19.0 %	18.6 %	16.5 %	20.6 %	20.8 %	20.5 %	22.6 %	21.9 %

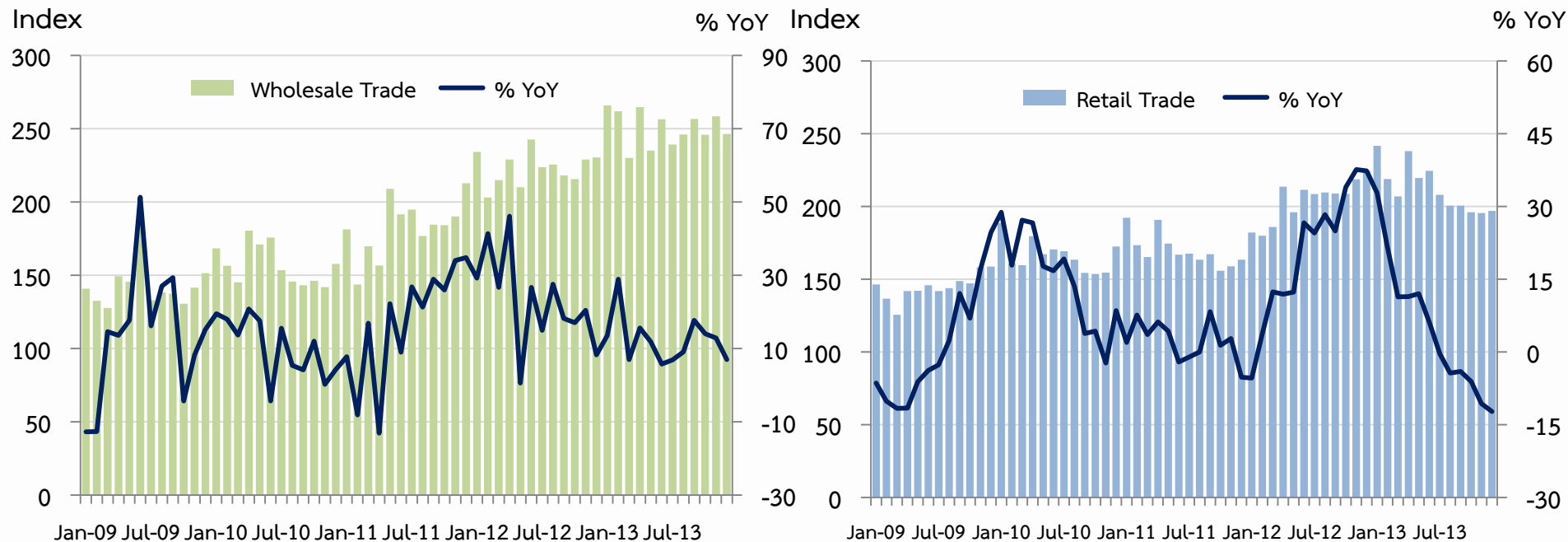


P = preliminary data, R = revised data



	2012	2013 ^P	2013					
			H1	H2 ^P	Q3 ^R	Q4 ^P	Nov ^R	Dec ^P
Wholesale Trade	223.0	250.6	252.3	248.8	247.3	250.2	258.4	246.5
% YoY	21.9	12.3	13.5	11.2	11.2	11.2	12.9	7.0
Retail Trade	204.0	212.3	225.0	199.6	203.1	196.2	195.4	197.1
% YoY	20.0	4.1	15.5	-6.4	-2.9	-9.7	-10.6	-12.3

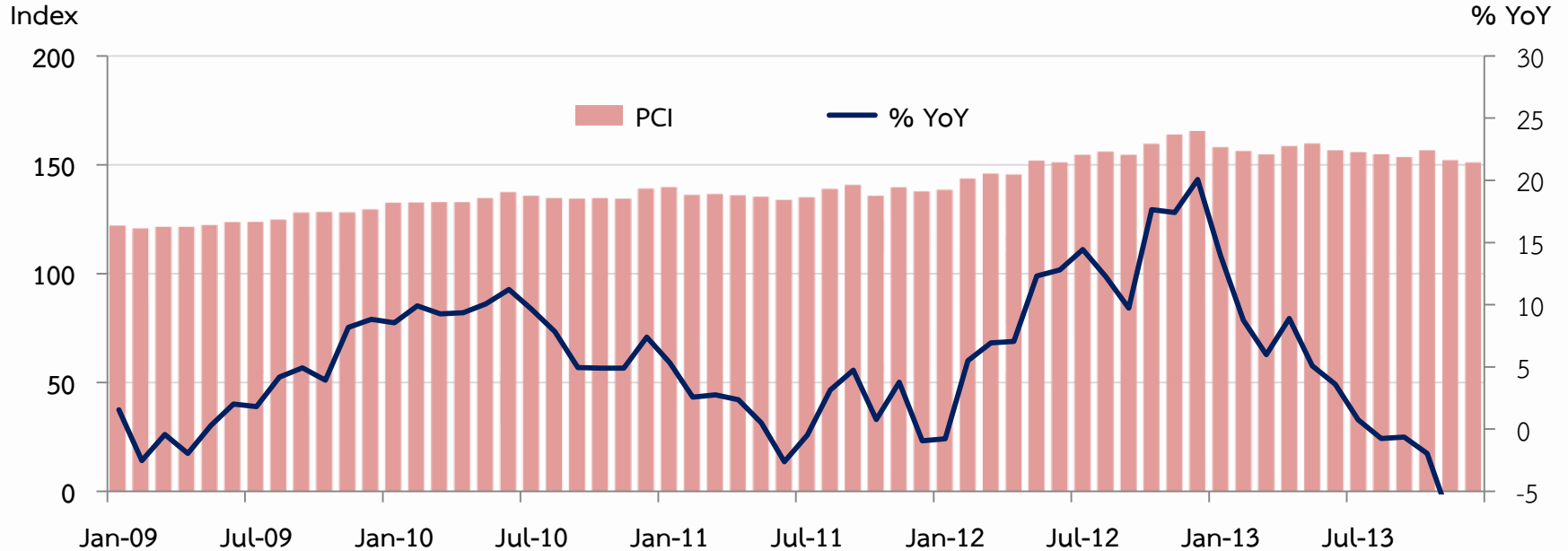
P = Preliminary data, R = Revised data





	2012	2013 ^P	2013					
			H1	H2 ^P	Q3	Q4 ^P	Nov ^R	Dec ^P
PCI	151.8	154.9	156.5	153.2	153.9	152.4	151.3	150.3
% YoY	11.3	2.0	7.6	-3.2	-0.2	-6.0	-7.2	-8.7
% MoM, % QoQ, SA			-1.1	-2.1	-2.2	-1.0	-2.9	-0.6

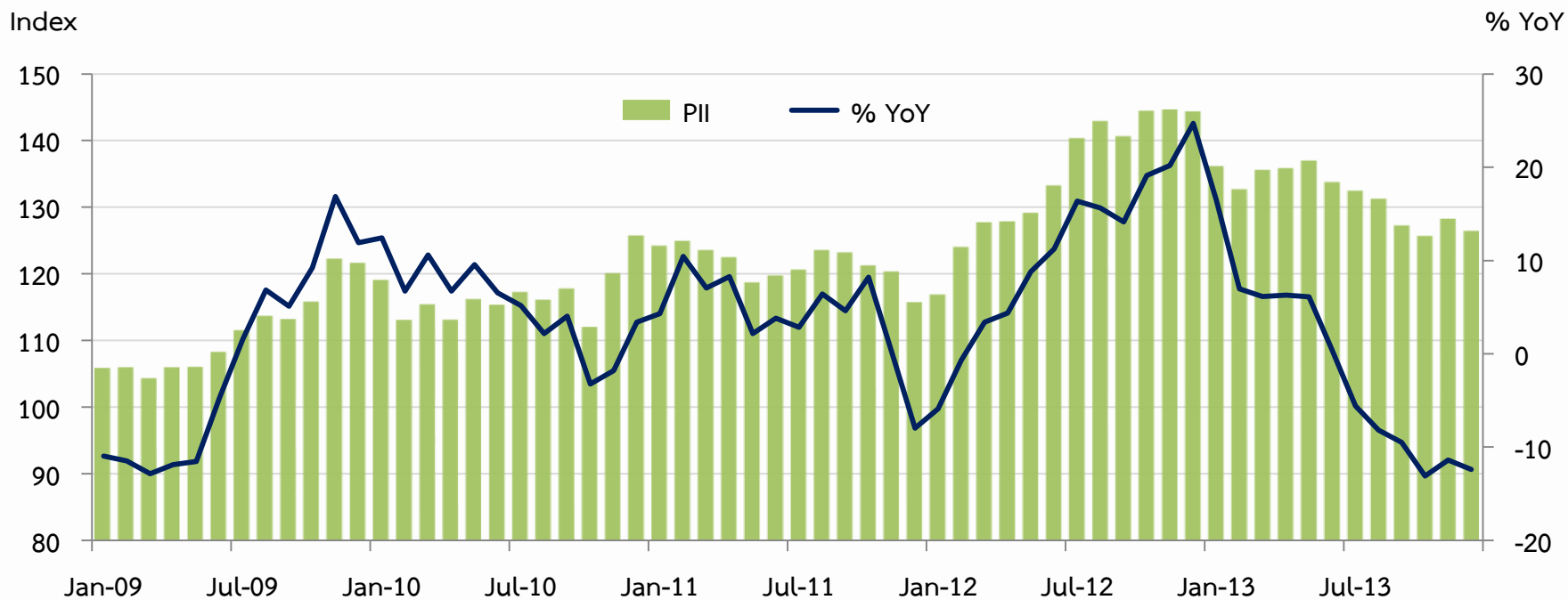
P = Preliminary data, R = Revised data





	2012	2013 ^P	2013					
			H1	H2 ^P	Q3	Q4 ^P	Nov ^R	Dec ^P
PII	134.6	131.8	135.1	128.5	130.3	126.7	128.2	126.4
% YoY	10.8	-2.1	6.9	-10.0	-7.8	-12.3	-11.4	-12.4
% MoM, % QoQ	-		-5.4	-4.9	-3.8	2.8	2.1	-1.4

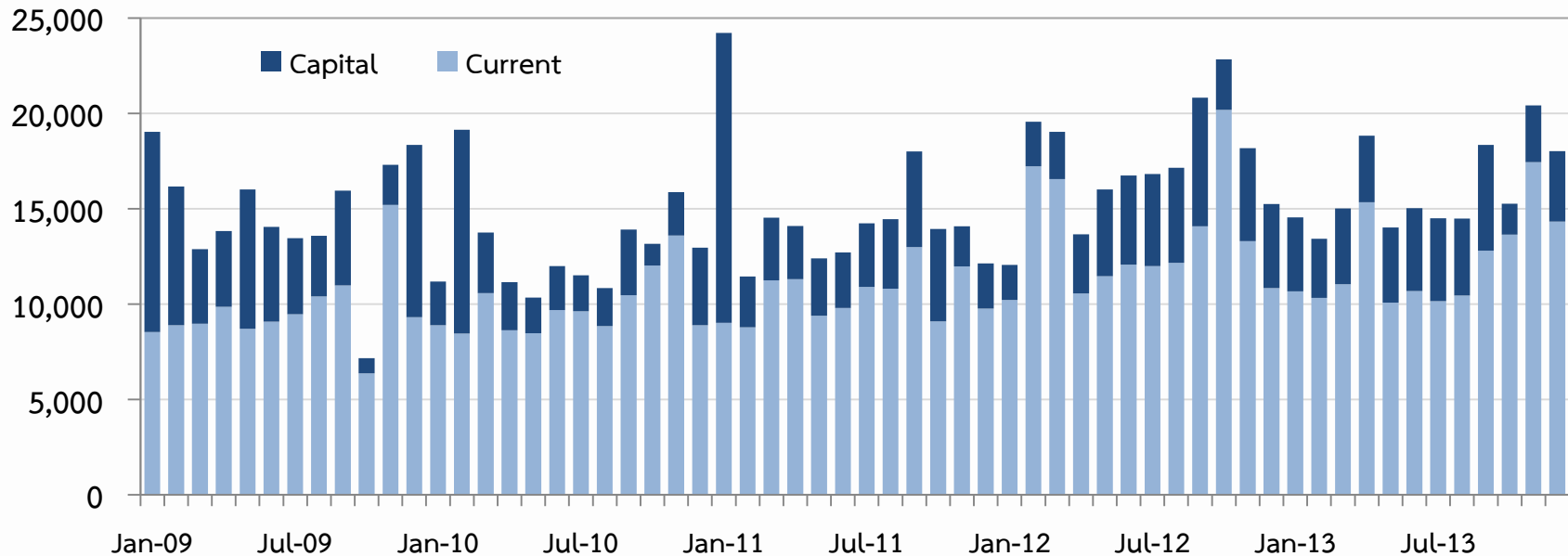
P = Preliminary data, R = Revised data





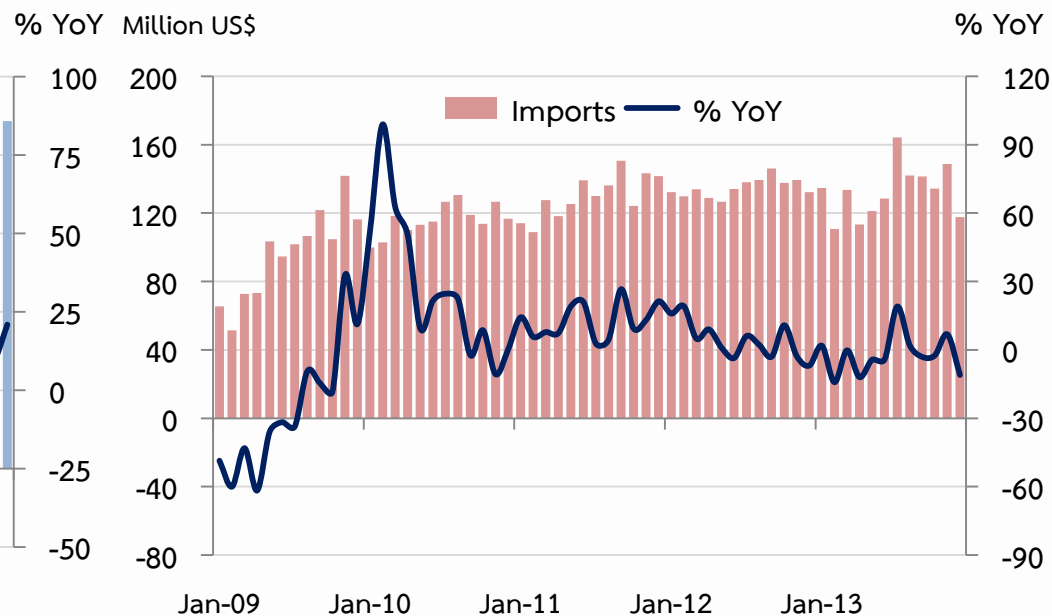
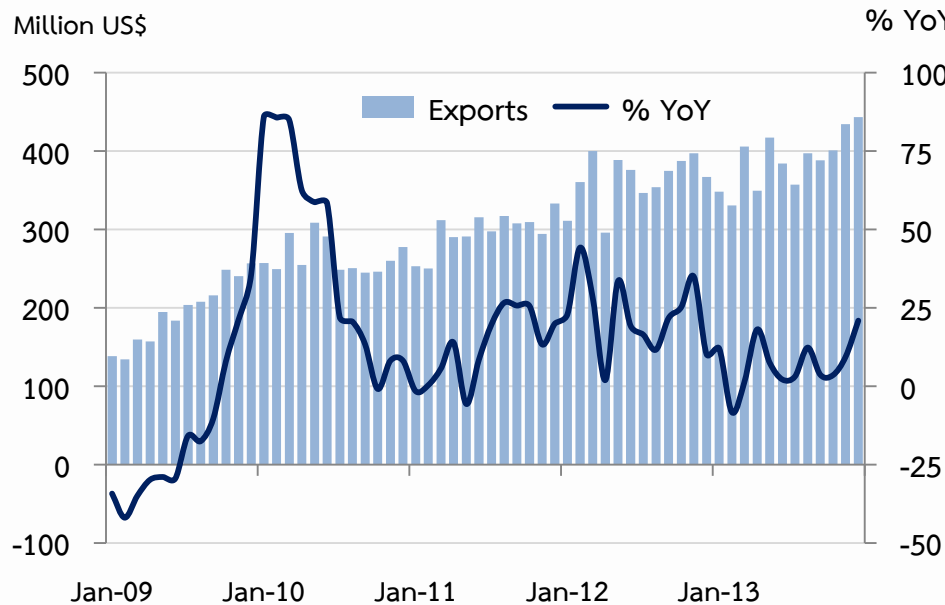
Expenditure	2012	2013	2013					
			H1	H2	Q3	Q4	Nov	Dec
Current	160,593.6	146,945.5	68,132.3	78,813.2	33,387.9	45,425.3	17,447.1	14,334.2
% YoY	28.4	-8.5	-12.7	-4.5	-12.6	2.5	31.2	32.3
Capital	47,475.8	44,909.6	22,706.3	22,203.3	13,926.7	8,276.6	2,961.6	3,690.5
% YoY	-7.2	-5.4	19.6	-22.1	-15.9	-30.6	-39.3	-16.4
Total	208,069.4	191,855.1	90,838.6	101,016.5	47,314.6	53,701.9	20,408.7	18,024.7
% YoY	18.1	-7.8	-6.4	-9.0	-13.6	-4.5	12.3	18.2

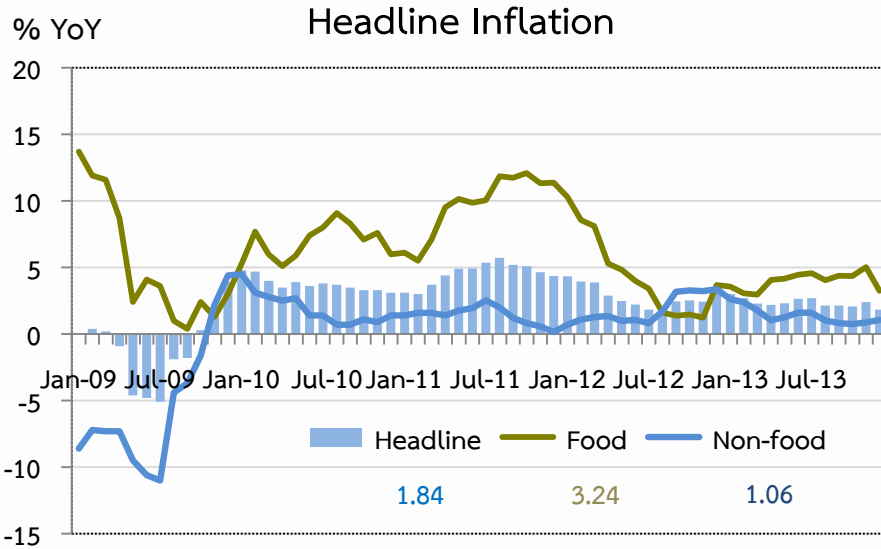
Million Baht



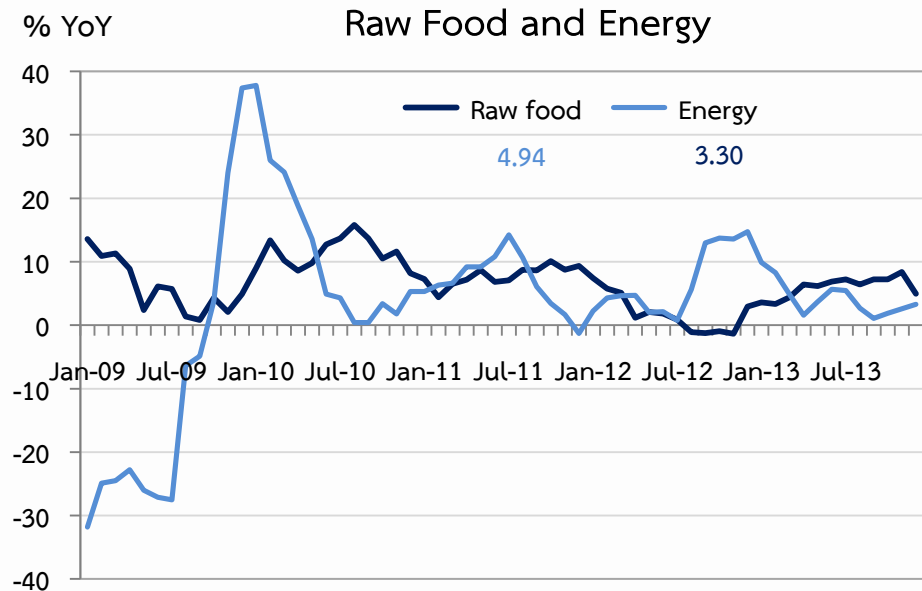
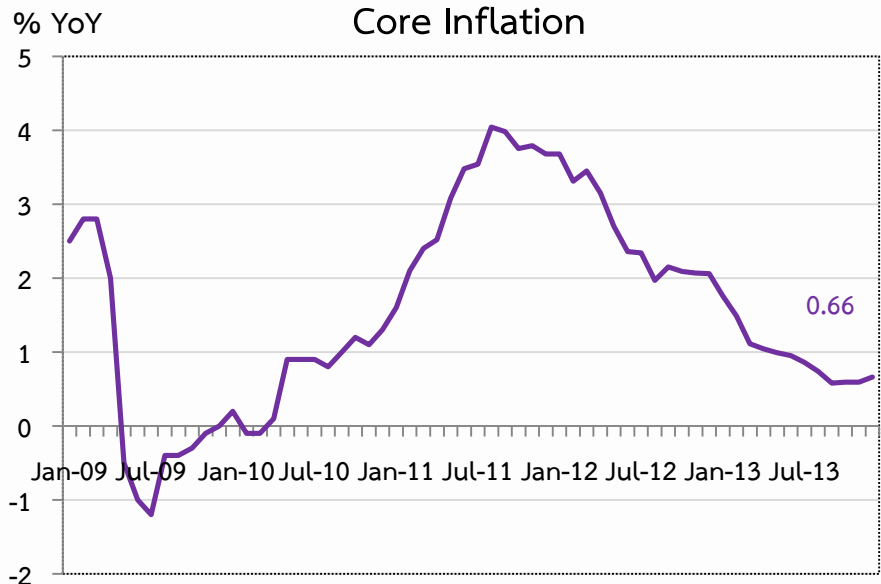


	2012	2013	2013					
			H1	H2	Q3	Q4	Nov	Dec
EXPORTS	4,358.7	4,657.0	2,235.3	2,421.7	1,142.7	1,279.0	434.6	443.5
% YoY	23.2	6.8	4.8	8.8	6.3	11.1	9.4	20.9
IMPORTS	1,617.1	1,591.9	743.5	848.4	447.6	400.7	148.7	117.7
% YoY	3.7	-1.6	-5.3	1.9	5.8	-2.0	6.8	-11.0





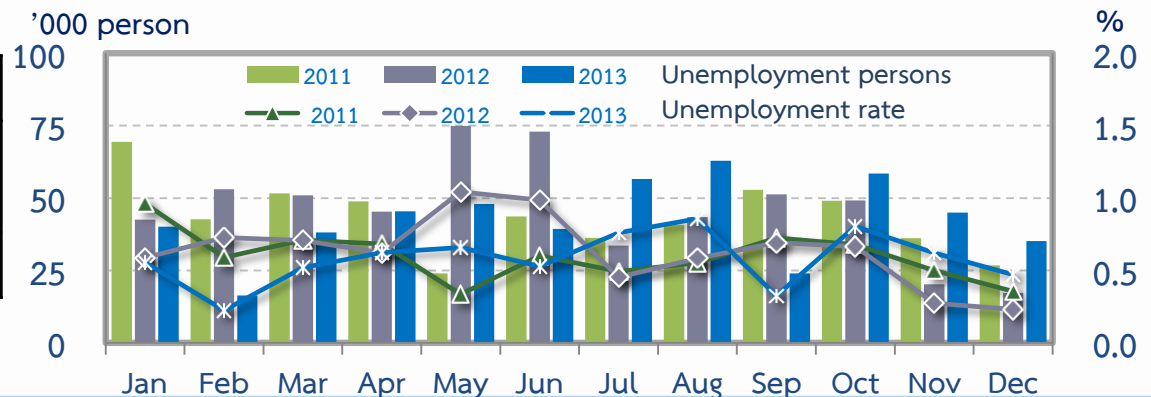
	2012	2013	2013					
			H1	H2	Q3	Q4	Nov	Dec
Headline	2.83	2.37	2.53	2.22	2.32	2.11	2.42	1.84
Food	4.38	4.00	3.72	4.27	4.33	4.21	5.03	3.24
Non-food	1.83	1.40	1.78	1.02	1.14	0.89	0.87	1.06
Core	2.60	0.94	1.22	0.67	0.73	0.61	0.59	0.66





%YOY	% of Total Labor Force (as of Dec 2013)	2012	2013	2013					
				H1	H2	Q3	Q4	Nov	Dec
Labor Force (1,000 Persons)	100.0	7,341	7,333	7,309	7,357	7,379	7,334	7,257	7,472
Employed persons	99.1	0.7	-0.1	1.0	-1.1	-0.8	-1.5	-2.2	-0.4
Agriculture	45.5	4.0	-0.1	0.8	-0.9	0.4	-2.2	-4.0	-1.4
Non-agriculture	53.6	-2.3	-0.1	1.2	-1.4	-2.1	-0.7	-0.1	0.8
Manufacturing	11.2	0.0	6.5	4.9	8.1	9.3	6.9	8.9	4.6
Construction	7.9	7.2	-1.2	1.4	-4.1	-7.4	-1.0	-7.8	23.6
Wholesale & retail trade	13.3	4.0	-5.0	-1.2	-8.8	-8.7	-9.0	-7.4	-8.5
Hotel & restaurants Services	5.2	-8.0	-1.5	-1.1	-1.9	0.5	-4.3	8.3	-19.2
Others	16.0	-4.9	0.9	1.1	30.7	27.6	33.9	3.4	3.5
Unemployed persons	0.7	5.6	-8.3	-38.2	42.3	19.1	80.0	123.3	104.1
Seasonally inactive persons	0.2	5.1	1.4	-5.8	68.7	-7.2	156.0	113.8	87.5

Unemployment	Dec-12	Dec-13
In thousand persons	17.2	35.2
rate	0.2	0.5





Commercial Bank's Deposits

	2012	2013					
		H1	Q1	Q2	Q3	Oct	Nov
Deposits	543.0	569.4	559.2	569.4	561.2	563.7	572.4
% YoY	23.5	11.6	16.7	11.6	6.0	6.0	5.2

Commercial Bank's Credits

	2012	2013					
		H1	Q1	Q2	Q3	Oct	Nov
Credits	477.1	531.1	513.0	531.1	551.0	556.7	562.8
% YoY	18.3	23.6	23.4	23.6	21.3	20.5	19.8

